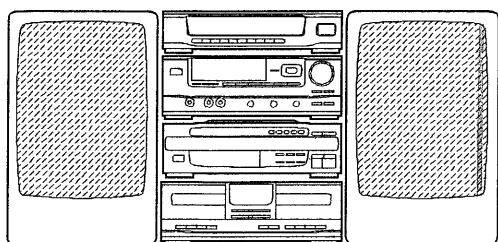


aiwa



Z-D3300M



STEREO SYSTEM

• BASIC TAPE MECHANISM : 2ZM-1P1, R1

• TYPE: HE,HK,LH,
EE,K,EZ

SYSTEM	CENTER SYSTEM	AMPLIFIER	CASSETTE DECK	TUNER	SPEAKER	CD PLAYER	TURNTABLE
-	CU-D3300M (HE,HK,LH)	MX-Z3300M	FX-WZ7300	TX-Z9300	*1 SX-FZ3300	DX-Z9300M	-
Z-D3300M (EE,K,EZ)	-	MX-Z3300M	FX-WZ7300	TX-Z9300	*1 SX-FZ3300	DX-Z9300M (OPTIONAL)	PX-E850 (OPTIONAL)

*1 CENTER SYSTEM does not have *1.

- As to the service information of CASSETTE DECK, see the individual service manual of original.
(S/M Code No. 09-956-104-6FE)
- As to the service information of TUNER, see the individual service manual of original.
(S/M Code No. 09-954-101-50I & 09-956-105-50I)
- As to the service information of CD PLAYER, see the individual service manual of original.
(S/M Code No. 09-954-101-60I)
- As to the service information of TURNTABLE, see the individual service manual of original.
(S/M Code No. 09-947-070-90I)

SPECIFICATIONS

TUNER TX-Z9300

<FM tuner section>

Tuning range	87.5 MHz to 108 MHz
Usable sensitivity(IHF)	HE, HK, LH: 15.2 dBf (1.6 μ V, 75 ohms) EE, K, EZ: 18.2 dBf (2.2 μ V, 75 ohms)
Antenna terminals	75 ohms (unbalanced)

<AM tuner section> (HE, HK, LH only)

Tuning range	531 kHz to 1602 kHz (9 kHz step) 530 kHz to 1710 kHz (10 kHz step)
Usable sensitivity	400 μ V/m
Antenna	Loop antenna

<MW tuner section> (EE, K, EZ only)

Tuning range	522 kHz to 1611 kHz
Usable sensitivity	400 μ V/m
Antenna	Loop antenna

<LW tuner section> (EE, K, EZ only)

Tuning range	144 kHz to 290 kHz
Usable sensitivity	1000 μ V/m
Antenna	Loop antenna

<General>

Dimension (W x H x D)	360 x 88.5 x 320.5 mm (14 ¹ / ₄ x 3 ¹ / ₂ x 12 ⁵ / ₈ in.)
Weight	2.1 kg (4 lbs 10 oz)

AMPLIFIER MX-Z3300M

Power requirements	HE, HK, LH: 120/220 – 230/240 V AC switchable 50/60 Hz EE, K, EZ: 230 V 50 Hz
Power consumption	HE, HK, LH: 90 W (System total 110 W) EE, K, EZ: 330 W (System total 350 W)
Power output	Rated: 60 W + 60 W (without connecting to the SURROUND SPEAKERS, 6 ohms, T.H.D. 1%, 1 kHz/DIN 45500) Reference: 75 W + 75 W (without connecting to the SURROUND SPEAKERS, 6 ohms, T.H.D. 10%, 1 kHz/DIN 45324) DIN MUSIC POWER: 98 W + 98 W
Total harmonic distortion	0.1% (38 W, 1 kHz, 6 ohms)
Outputs	SPEAKERS: accepts speakers of 6 ohms or more PHONES (stereo standard jack): accepts headphones of 32 ohms or more SUPER WOOFER: 1.5V MONITOR OUT: 1 Vp-p (75 ohms) REC OUT: 300 mV (1 kohm)

Inputs

VIDEO 1/AUX 1: 300 mV (39 kohms)
VIDEO 2/AUX 2: 500 mV (39 kohms)
PHONO IN: 500 mV or more (36 kohms)
HE, HK, LH: MIC 1, MIC 2: 1.4 mV (10 kohms)
EE, K, EZ: MIC 1, MIC 2: 1.2 mV (10 kohms)
360 x 128.5 x 329 mm (14 ¹ / ₄ x 5 ¹ / ₈ x 13 in.)
6.9 kg (18 lbs 8 oz)

Dimension (W x H x D)


Weight

STEREO CASSETTE DECK FX-WZ7300

Track format	4 tracks, 2 channels stereo
Frequency response	Metal tape: 20 Hz – 17000 Hz CrO ₂ tape: 20 Hz – 16000 Hz Normal tape: 20 Hz – 15000 Hz
Signal-to-noise ratio	HE, HK, LH: 65 dB (Dolby NR ON, metal tape peak level above 5 kHz) EE, K, EZ: 70 dB (Dolby NR ON, metal tape peak level above 5 kHz)
Wow and flutter	0.12% (WRMS) \pm 0.19% (WPEAK)
Recording system	AC bias
Heads	Deck 1: Playback head x 1 Deck 2: Recording/playback/ erase head x 1
Dimension (W x H x D)	360 x 128.5 x 313 mm (14 ¹ / ₄ x 5 ¹ / ₈ x 12 ³ / ₈ in.)
Weight	3.2 kg (7 lbs 1 oz)

SPEAKER SYSTEM SX-FZ3300

Cabinet type	3 way, bass reflex (Magnetism sealed type)
Speaker	Woofer: 220 mm (8 ³ / ₄ in.) cone type Tweeter: 80 mm (3 ¹ / ₄ in.) cone type Super tweeter: 50 mm (2 in.) ceramic type
Impedance	Surround speaker: 80 mm (3 ¹ / ₄ in.) Front speaker: 6 ohms Surround speaker: 16 ohms
Output sound pressure level	90 dB/W/m
Dimensions (W x H x D)	260 x 456 x 280 mm (10 ¹ / ₄ x 18 x 11 ¹ / ₈ in.)
Weight	5.9 kg (15 lbs 14z oz.)

- Design and specifications are subject to change without notice.
- Dolby noise reduction manufactured under license from Dolby Laboratories Licensing Corporation.
"DOLBY" and the double-D symbol  are trademarks of Dolby Laboratories Licensing Corporation.
- The word "BBE" and the "BBE symbol" are trademarks of BBE Sound, Inc.
Under license from BBE Sound, Inc.

ACCESSORIES / PACKAGE LIST

If can't understand for Description please kindly refer to "REFERENCE NAME LIST".

REF. NO.	PART NO.	KANRI NO.	DESCRIPTION	REF. NO.	PART NO.	KANRI NO.	DESCRIPTION
1	85-VP3-902-119		IB, EGI(S) <EE, EEZ, EZ>	2	85-VP2-619-019		RC, RC-T511
1	85-VP3-903-019		IB, ESC(S) <HE, LH, HK>	3	87-099-789-019		PLUG, ADPTR IR44 <HE, LH>
1	85-VP3-901-119		IB, ESF(S) <EE, K, EEZ, EZ>				

MODEL NO.

MX-Z3300M**ELECTRICAL MAIN PARTS LIST**

If can't understand for Description please kindly refer to "REFERENCE NAME LIST".

REF. NO.	PART NO.	KANRI NO.	DESCRIPTION	REF. NO.	PART NO.	KANRI NO.	DESCRIPTION
IC				C7	87-016-110-099		CAP,E 5600-25 SME
	82-VP2-628-010		IC,CXP82316-148Q	C8	87-010-453-099		CAP,E 4700-25 SME
	87-002-220-010		IC,UPA80C	C9	87-018-214-089		CAP,TC-U 0.1-50 F
	87-027-938-019		IC,TC4053BP	C10	87-018-214-089		CAP,TC-U 0.1-50 F
	87-027-958-019		IC,TC4051BP	C15	87-010-408-089		CAP,E 47-50 SME
	87-002-950-019		IC,BA3826S				
	87-027-666-019		IC,TC4052BP	C16	87-010-407-089		CAP,E 33-50 SME
	87-002-727-019		IC,NJM4558L	C17	87-015-914-089		CAP,E 47-100
	87-001-607-089		IC,NJM4558M	C18	87-010-263-089		CAP,E 100-10 SME 5X11
	87-002-218-010		IC,XRC5451AP	C27	87-010-405-089		CAP,E 10-50 SME
	87-017-374-019		IC,TC4094BP	C28	87-010-101-089		CAP,E 220-16 SME
	87-017-541-080		IC,M65830AFP<HE,HK>				
	87-001-530-019		IC,LA3607	C60	87-010-403-089		CAP,E 3.3-50 SME
	87-002-429-019		IC,NUJ7305L	C61	87-010-374-089		CAP,E 47-10
	87-017-294-019		IC,NJM2120L	C71	87-010-405-089		CAP,E 10-50 SME
	87-017-309-010		IC,M65830P	C72	87-010-260-089		CAP,E 47-25 SME
	87-001-904-019		IC,STK4192-MK2	C73	87-010-101-089		CAP,E 220-16 SME
TRANSISTOR				C74	87-010-381-089		CAP,E 330-16 SME
	87-026-462-089		TR,2SC1740S(RS)	C75	87-010-374-089		CAP,E 47-10
	89-406-555-089		TR,2SD655E	C76	87-010-374-089		CAP,E 47-10
	89-113-187-889		TR,2SA1318TU	C79	87-018-127-089		CAP,TC-U 470P-50 B
	89-213-702-019		TR,2SB1370E	C101	87-010-404-089		CAP,E 4.7-50 SME
	87-026-463-089		TR,2SA933S(RS)				
	89-318-155-089		TR,2SC1815GR	C102	87-010-404-089		CAP,E 4.7-50 SME
	87-026-245-089		TR,DTC114ES	C103	87-010-406-089		CAP,E 22-50 SME
	89-110-155-089		TR,2SA1015GR	C104	87-010-374-089		CAP,E 47-10
	89-332-665-089		TR,2SC3266GR	C105	87-010-263-089		CAP,E 100-10 SME 5X11
	87-026-215-089		TR,DTC114YS	C106	87-010-221-089		CAP,E 470-10
	87-026-500-089		TR,2SD2144SUV(TP)				
	89-333-317-889		TR,2SC3331TU	C107	87-018-119-089		CAP,TC-U 100P-50 B<EE,K,EEZ,EZ>
	87-026-658-010		FET,2SJ176	C108	87-018-119-089		CAP,TC-U 100P-50 B<EE,K,EEZ,EZ>
	89-510-940-010		FET,2SK1094	C141	87-010-406-089		CAP,E 22-50 SME
	87-026-219-089		TR,DTA144ES	C191	87-010-405-089		CAP,E 10-50 SME
	87-026-216-089		TR,DTA124ES	C192	87-010-405-089		CAP,E 10-50 SME
	89-322-405-089		TR,2SC2240GR				
DIODE				C193	87-010-405-089		CAP,E 10-50 SME
	87-002-597-069		DIODE,DBF 60C-K13	C194	87-010-405-089		CAP,E 10-50 SME
	87-020-691-089		DIODE,1SS132 T-72	C198	87-010-405-089		CAP,E 10-50 SME
	87-001-574-089		DIODE,1SR139-200 T31	C199	87-010-405-089		CAP,E 10-50 SME
	87-002-743-089		ZENER,MTZJ33B	C200	87-010-405-089		CAP,E 10-50 SME
	87-001-785-010		DIODE,SB360F				
	87-027-606-089		ZENER,HZ7C2L	C201	87-018-134-089		CAP,TC-U 0.01-16 Y
	87-001-911-089		ZENER,UTZJ4.7A(TAPG)	C202	87-018-134-089		CAP,TC-U 0.01-16 Y
	87-001-559-089		DIODE,ISS131(T-72)	C250	87-010-401-089		CAP,E 1-50 SME
	87-001-916-089		ZENER,UTZJ10B	C251	87-010-101-089		CAP,E 220-16 SME
	87-002-430-089		ZENER,UTZJ8.2C	C252	87-010-401-089		CAP,E 1-50 SME
	87-027-661-089		ZENER,HZ30-2L				
	87-017-096-089		ZENER,HZS6A3	C253	87-010-401-089		CAP,E 1-50 SME
	87-001-913-089		ZENER,UTZ5.6B	C254	87-010-405-089		CAP,E 10-50 SME
	87-001-915-089		ZENER,UTZJ6.8A	C255	87-010-405-089		CAP,E 10-50 SME
	87-001-912-089		ZENER,UTZJ5.1B	C256	87-010-401-089		CAP,E 1-50 SME
	87-017-091-089		ZENER,HZS5C1<HE,HK>	C257	87-010-401-089		CAP,E 1-50 SME
MAIN C.B							
C1	87-018-214-089		CAP,TC-U 0.1-50 F	C258	87-010-404-089		CAP,E 4.7-50 SME
C2	87-018-214-089		CAP,TC-U 0.1-50 F<HE,LH,HK>	C259	87-010-404-089		CAP,E 4.7-50 SME
C4	87-016-160-099		CAP,E 5600-56 BSN	C260	87-010-400-089		CAP,E 0.47-50 SME
C5	87-016-160-099		CAP,E 5600-56 BSN	C261	87-010-400-089		CAP,E 0.47-50 SME
				C262	87-010-404-089		CAP,E 4.7-50 SME
				C263	87-010-404-089		CAP,E 4.7-50 SME
				C264	87-010-404-089		CAP,E 4.7-50 SME
				C265	87-010-405-089		CAP,E 10-50 SME
				C266	87-010-405-089		CAP,E 10-50 SME
				C267	87-010-405-089		CAP,E 10-50 SME
				C269	87-018-121-089		CAP,TC-U 150P-50 B
				C270	87-018-121-089		CAP,TC-U 150P-50 B
				C273	87-018-134-089		CAP,TC-U 0.01-16 Y
				C274	87-018-134-089		CAP,TC-U 0.01-16 Y
				C275	87-018-198-089		CAP,TC-U 2700P-16 X
				C276	87-018-198-089		CAP,TC-U 2700P-16 X
				C277	87-018-122-089		CAP,TC-U 180P-50 B
				C278	87-018-122-089		CAP,TC-U 180P-50 B
				C281	87-010-544-089		CAP,E 0.1-50

REF. NO.	PART NO.	KANRI NO.	DESCRIPTION	REF. NO.	PART NO.	KANRI NO.	DESCRIPTION
C282	87-010-544-089	CAP,E 0.1-50		C682	87-016-072-089	CAP,E 0.47-50 FX	
C283	87-010-545-089	CAP,E 0.22-50 SME		C683	87-010-401-089	CAP,E 1-50 SME	
C284	87-010-545-089	CAP,E 0.22-50 SME		C684	87-010-401-089	CAP,E 1-50 SME	
C285	87-010-404-089	CAP,E 4.7-50 SME		C685	87-010-400-089	CAP,E 0.47-50 SME	
C286	87-010-405-089	CAP,E 10-50 SME		C686	87-010-400-089	CAP,E 0.47-50 SME	
C287	87-010-405-089	CAP,E 10-50 SME		C687	87-010-401-089	CAP,E 1-50 SME	
C288	87-010-405-089	CAP,E 10-50 SME		C688	87-010-401-089	CAP,E 1-50 SME	
C289	87-010-401-089	CAP,E 1-50 SME		C689	87-016-096-089	CAP,E 47-16 FX	
C290	87-010-404-089	CAP,E 4.7-50 SME		C690	87-016-096-089	CAP,E 47-16 FX	
C291	87-018-195-089	CAP,TC-U 1200P-16 X		C691	87-010-405-089	CAP,E 10-50 SME	
C292	87-018-195-089	CAP,TC-U 1200P-16 X		C692	87-010-405-089	CAP,E 10-50 SME	
C293	87-018-128-089	CAP,TC-U 560P-50 B		C695	87-010-400-089	CAP,E 0.47-50 SME	
C294	87-018-128-089	CAP,TC-U 560P-50 B		C696	87-010-401-089	CAP,E 1-50 SME	
C301	87-018-121-089	CAP,TC-U 150P-50 B		C697	87-010-403-089	CAP,E 3.3-50 SME	
C302	87-018-121-089	CAP,TC-U 150P-50 B		C698	87-010-403-089	CAP,E 3.3-50 SME	
C360	87-010-404-089	CAP,E 4.7-50 SME		C699	87-010-544-089	CAP,E 0.1-50	
C365	87-018-115-089	CAP,TC-U 47P-50 SL		C701	87-010-392-089	CAP,E 33-35 SME	
C403	87-018-127-089	CAP,TC-U 470P-50 B		C702	87-010-392-089	CAP,E 33-35 SME	
C404	87-018-127-089	CAP,TC-U 470P-50 B		C703	87-018-128-089	CAP,TC-U 560P-50 B	
C501	87-010-404-089	CAP,E 4.7-50 SME		C704	87-018-128-089	CAP,TC-U 560P-50 B	
C502	87-010-404-089	CAP,E 4.7-50 SME		C707	87-018-121-089	CAP,TC-U 150P-50 B<EE,K,EEZ,EZ>	
C505	87-018-123-089	CAP,TC-U 220P-50 B		C708	87-018-121-089	CAP,TC-U 150P-50 B<EE,K,EEZ,EZ>	
C506	87-018-123-089	CAP,TC-U 220P-50 B		C758	87-010-410-089	CAP,E 330-50 SME	
C507	87-010-404-089	CAP,E 4.7-50 SME		C759	87-010-374-089	CAP,E 47-10	
C508	87-010-404-089	CAP,E 4.7-50 SME		C760	87-010-374-089	CAP,E 47-10	
C509	87-018-127-089	CAP,TC-U 470P-50 B		C761	87-018-104-089	CAP,TC-U 10P-50 SL	
C510	87-018-127-089	CAP,TC-U 470P-50 B		C762	87-018-104-089	CAP,TC-U 10P-50 SL	
C511	87-010-402-089	CAP,E 2.2-50 SME		C763	87-010-260-089	CAP,E 47-25 SME	
C512	87-010-402-089	CAP,E 2.2-50 SME		C764	87-010-260-089	CAP,E 47-25 SME	
C515	87-010-546-089	CAP,E 0.33-50 SME		C765	87-018-119-089	CAP,TC-U 100P-50 B<HE,LH,HK>	
C516	87-010-546-089	CAP,E 0.33-50 SME		C765	87-018-125-089	CAP,TC-U 330P-50 B<EE,K,EEZ,EZ>	
C519	87-010-544-089	CAP,E 0.1-50		C766	87-018-119-089	CAP,TC-U 100P-50 B<HE,LH,HK>	
C520	87-010-544-089	CAP,E 0.1-50		C766	87-018-125-089	CAP,TC-U 330P-50 B<EE,K,EEZ,EZ>	
C525	87-018-203-089	CAP,TC-U 8200P-16 Y		C771	87-018-202-089	CAP,TC-U 6800P-16 X<EE,K,EEZ,EZ>	
C526	87-018-203-089	CAP,TC-U 8200P-16 Y		C772	87-018-202-089	CAP,TC-U 6800P-16 X<EE,K,EEZ,EZ>	
C529	87-018-199-089	CAP,TC-U 3300P-16 X		C773	87-018-134-089	CAP,TC-U 0.01-16 Y	
C530	87-018-199-089	CAP,TC-U 3300P-16 X		C800	87-018-134-089	CAP,TC-U 0.01-16 Y	
C533	87-018-131-089	CAP,TC-U 1000P-50 B		C900	87-018-119-089	CAP,TC-U 100P-50 B	
C534	87-018-131-089	CAP,TC-U 1000P-50 B		C901	87-018-115-089	CAP,TC-U 47P-50 B	
C535	87-018-199-089	CAP,TC-U 3300P-16 X		C902	87-018-115-089	CAP,TC-U 47P-50 B	
C536	87-018-199-089	CAP,TC-U 3300P-16 X		C903	87-018-133-089	CAP,TC-U 4700P-16 X	
C537	87-018-127-089	CAP,TC-U 470P-50 B		C904	87-018-133-089	CAP,TC-U 4700P-16 X	
C538	87-018-127-089	CAP,TC-U 470P-50 B		CB1	87-026-584-010	PROTECTOR,R3U3T100A<EXCEPT LH>	
C539	87-010-260-089	CAP,E 47-25 SME		EMI1	87-008-372-019	FLTR,EMI BL 01RN1<EE,K,EEZ,EZ>	
C540	87-010-260-089	CAP,E 47-25 SME		J280	87-099-277-019	JACK,6.3 W/S	
C541	87-010-260-089	CAP,E 47-25 SME		J281	87-099-064-019	JACK,6.3 W/S	
C543	87-018-131-089	CAP,TC-U 1000P-50 B		J283	87-099-064-019	JACK,6.3 W/S	
C544	87-018-131-089	CAP,TC-U 1000P-50 B		J750	81-VP1-634-019	JACK,PIN 3P	
C601	87-018-127-089	CAP,TC-U 470P-50 B		J751	81-VP1-634-019	JACK,PIN 3P	
C602	87-010-405-089	CAP,E 10-50 SME		J752	81-VP1-634-019	JACK,PIN 3P	
C630	87-010-401-089	CAP,E 1-50 SME		J753	87-009-393-019	JACK,PIN 2P EARTH	
C631	87-018-201-089	CAP,TC-U 5600P-16 X		J759	84-VP2-630-019	JACK,PIN 3P B.W.R	
C632	87-018-131-089	CAP,TC-U 1000P-50 B		J760	87-033-225-019	TERMINAL,SP-4P N	
C634	87-010-374-089	CAP,E 47-10		L642	87-003-152-089	COIL,100UH	
C635	87-018-214-089	CAP,TC-U 0.1-50 F		L751	87-005-366-019	COIL,1UH<EE,K,EEZ,EZ>	
C636	87-018-214-089	CAP,TC-U 0.1-50 F		L752	87-005-366-019	COIL,1UH<EE,K,EEZ,EZ>	
C638	87-018-201-089	CAP,TC-U 5600P-16 X		R29	87-025-473-089	RES,NF 10-1/4W J	
C639	87-018-131-089	CAP,TC-U 1000P-50 B		R40	87-022-050-089	RESIS,METAL 1W-0.22J	
C640	87-010-401-089	CAP,E 1-50 SME		R45	87-022-050-089	RESIS,METAL 1W-0.22J	
C641	87-018-201-089	CAP,TC-U 5600P-16 X		R734	87-025-467-089	RES,NF 1-1/4 WJ	
C642	87-010-374-089	CAP,E 47-10		R777	87-022-050-089	RESIS,METAL 1W-0.22J	
C644	87-010-405-089	CAP,E 10-50 SME		R778	87-022-050-089	RESIS,METAL 1W-0.22J	
C645	87-010-112-089	CAP,E 100-16 SME		R779	87-022-050-089	RESIS,METAL 1W-0.22J	
C646	87-018-119-089	CAP,TC-U 100P-50 B		R780	87-022-050-089	RESIS,METAL 1W-0.22J	
C647	87-018-119-089	CAP,TC-U 100P-50 B		RY1	87-045-285-010	RELAY,VB12MB	
C648	87-010-544-089	CAP,E 0.1-50		RY2	87-045-382-019	RELAY,OUAZ-SH-112L	
C649	87-010-406-089	CAP,E 22-50 SME		VR141	84-VP2-632-019	VR,50KBX2 RK1210	
C670	87-010-405-089	CAP,E 10-50 SME		VR281	81-VP1-622-019	VR,10KA RK11K112	
C671	87-010-400-089	CAP,E 0.47-50 SME		VR282	81-VP1-622-019	VR,10KA RK11K112	
C681	87-016-072-089	CAP,E 0.47-50 FX		VR372	81-VP1-627-019	VOL,100KW RK11K112	

REF. NO.	PART NO.	KANRI NO.	DESCRIPTION
WH101	85-VP2-618-119	CONN ASSY,10P TSL	
X630	87-030-172-019	VIB,CER CSB1000J	
FRONT C.B			
C1	87-010-071-089	CAP,E 1-50 5L	
C2	87-010-071-089	CAP,E 1-50 5L	
C3	87-010-415-089	CAP,E 10-50 5L	
C5	87-010-550-049	CAP,E 100-6.3 GAS	
C15	87-018-134-089	CAP,TC-U 0.01-16 Y	
C16	87-018-134-089	CAP,TC-U 0.01-16 Y	
C19	87-018-131-089	CAP,TC-U 1000P-50 B	
C21	87-010-071-089	CAP,E 1-50 5L	
C25	87-018-134-089	CAP,TC-U 0.01-16 Y	
C33	87-018-127-089	CAP,TC-U 470P-50 B	
C34	87-018-209-089	CAP,TC-U 0.1-50 F	
C111	87-018-134-089	CAP,TC-U 0.01-16 Y	
C151	87-018-134-089	CAP,TC-U 0.01-16 Y	
C153	87-018-134-089	CAP,TC-U 0.01-16 Y	
C160	87-010-263-089	CAP,E 100-10 SME 5X11	
C382	87-018-202-089	CAP,TC-U 6800P-16 X<HE,HK>	
C383	87-018-195-089	CAP,TC-U 1200P-16 X<HE,HK>	
C385	87-010-553-049	CAP,E 47-16 GAS<HE,HK>	
C386	87-010-400-049	CAP,E 0.47-50 SME<HE,HK>	
C387	87-010-400-049	CAP,E 0.47-50 SME<HE,HK>	
C389	87-018-201-089	CAP,TC-U 5600P-16 X<HE,HK>	
C390	87-018-195-089	CAP,TC-U 1200P-16 X<HE,HK>	
C391	87-010-490-049	CAP,E 1-50 GAS<HE,HK>	
C393	87-010-263-089	CAP,E 100-10 SME 5X11<HE,HK>	
C394	87-018-209-089	CAP,TC-U 0.1-50 F<HE,HK>	
C395	87-018-130-089	CAP,TC-U 820P-50 B<HE,HK>	
C396	87-018-130-089	CAP,TC-U 820P-50 B<HE,HK>	
C397	87-010-405-089	CAP,E 10-50 SME<HE,HK>	
CSA1	87-008-497-089	CERA LOCK CST7.68MTW	
FL1	82-VP3-615-019	FL,BJ189GK	
L1	87-003-098-089	COIL,2.2UH	
L2	87-003-098-089	COIL,2.2UH	
L5	87-003-102-089	COIL,10UH	
L301	87-005-490-089	COIL,270UH J FLR50<HE,HK>	
SW1	87-036-215-089	SW,TACT EVQ21404M	
SW2	87-036-215-089	SW,TACT EVQ21404M	
SW3	87-036-215-089	SW,TACT EVQ21404M	
SW4	87-036-215-089	SW,TACT EVQ21404M	
SW5	87-036-215-089	SW,TACT EVQ21404M	
SW6	87-036-215-089	SW,TACT EVQ21404M	
SW7	87-036-215-089	SW,TACT EVQ21404M	
SW8	87-036-215-089	SW,TACT EVQ21404M	
SW9	87-036-215-089	SW,TACT EVQ21404M	
SW10	87-036-215-089	SW,TACT EVQ21404M	
SW11	87-036-215-089	SW,TACT EVQ21404M	
SW12	87-036-215-089	SW,TACT EVQ21404M	
SW13	87-036-215-089	SW,TACT EVQ21404M	
SW14	87-036-215-089	SW,TACT EVQ21404M	
SW15	87-036-215-089	SW,TACT EVQ21404M	
SW16	87-036-215-089	SW,TACT EVQ21404M	
SW17	87-036-215-089	SW,TACT EVQ21404M	
SW18	87-036-215-089	SW,TACT EVQ21404M	
SW19	87-036-215-089	SW,TACT EVQ21404M	
SW20	87-036-215-089	SW,TACT EVQ21404M	
SW21	87-036-215-089	SW,TACT EVQ21404M	
SW22	87-036-215-089	SW,TACT EVQ21404M	
SW23	87-036-215-089	SW,TACT EVQ21404M	
SW24	87-036-215-089	SW,TACT EVQ21404M	
SW25	87-036-215-089	SW,TACT EVQ21404M	
SW26	87-036-215-089	SW,TACT EVQ21404M	
SW27	87-036-215-089	SW,TACT EVQ21404M	
VR370	82-VP2-636-019	VR,SL 10K B<HE,HK>	

MVR C.B

REF. NO.	PART NO.	KANRI NO.	DESCRIPTION
C201	87-010-405-089	CAP,E 10-50 SME	
C202	87-010-405-089	CAP,E 10-50 SME	
C203	87-010-404-089	CAP,E 4.7-50 SME	
C204	87-010-404-089	CAP,E 4.7-50 SME	
C205	87-010-404-089	CAP,E 4.7-50 SME	
C206	87-010-404-089	CAP,E 4.7-50 SME	
VR1	82-VP2-639-019	VR,50KBX2 MOTOR(SH)	
AC1 C.B			
△	87-033-147-019	CLAMP FUSE<HE,LH,HK>	
△	82-304-743-019	TERMINAL,1P	
△ F1	87-035-367-019	FUSE,T3.15A 250V<HE,LH,HK>	
AC2 C.B			
△	87-033-213-089	CLAMP FUSE SMK	
△ F2	87-035-369-019	FUSE,5A 250V TE	
△ F3	87-035-369-019	FUSE,5A 250V TE	
△ PT101	85-VP2-614-019	PT,5VP-2 E<EE,K,EEZ,EZ>	
△ PT101	85-VP2-613-019	PT,5VP-2 H<HE,LH,HK>	
R96	87-022-200-089	RES,METAL 0.56-1W	
R97	87-022-200-089	RES,METAL 0.56-1W	

AC SW C.B			
△ SW50	87-036-173-019	SW,SL 2-2-4 SDKG<HE,LH,HK>	

IC DESCRIPTION

IC, CXP82316-148Q

Pin No.	Pin Name	I/O	Description
1	I-HOLD	I	HOLD mode at "Low" and normal mode at "High".
2	I-REMOTE	I	Remote control signal input.
3 ~ 5	NC	–	Not used.
6	O-CS (DSP)	O	Data request output.
7	NC	–	Not used.
8	O-CLK	O	Serial data clock signal. (4094 CLK pin)
9	O-CLK (GEQ)	O	Clock signal output for "LEVEL CONT. VR" IC NJU7305L.
10	O-DATA	O	Serial data output.
11	I/O-SERIAL	I/O	Serial signal for system controller (8-bit).
12	O-STB	O	Strobe signal output. (4094 STB pin)
13	NC	–	Not used.
14	O-S16	O	FL display segment output.
15	O-S5		
16	O-S28		
17	O-S17		
18	O-S6		
19	O-S29		
20	I-INITIAL	I	Initialize signal.
21	O-VOL LED	O	VOL LED display output.
22	I-KEY 1	I	Key A/D input.
23	I-KEY 2		
24	NC	–	Not used.
25	I-KEY 4	I	Key A/D input.
26	O-FS RESET	O	Output to reset output of IC BA3826S.
27	I-SPE	I	Spectrum analyzer display input.
28	I-MIC	I	MIC signal input. Vocal fader turns "ON" when this input is more than 3.4V in vocal fader mode.
29	NC	–	Not used.
30	RESET	I	Reset signal for microcomputer.
31	EXTAL	–	Crystal connection terminal for oscillating system clock. (7.68MHz)
32	XTAL		
33	VSS	–	Ground.
34 ~ 60	O-S1 ~ O-S4	O	FL display segment output. Pins 37 ~ 39 are also used for band selection of spectrum analyzer.
	O-S7 ~ O-S15		
	O-S18 ~ O-S27		
	O-S30 ~ O-S 33		
61 ~ 70	O-G10 ~ O-G1	O	FL display grid drive signal.
71	VFDP	–	Negative power supply (–32V).
72	VDD	–	Power supply (+5V).
73	NC	–	Not used. (Connected to VDD)

Pin No.	Pin Name	I/O	Description
74	VOL UP	O	MOTOR VOL UP output.
75	VOL DOWN	O	MOTOR VOL DOWN output.
76	O-MUTE	O	Audio MUTE output.
77	O-POWER	O	Power ON/OFF control output.
78	I-GRID	I	GRID input for microcomputer extention.
79	I-G1	I	G1 input for microcomputer extention.
80	NC	–	Not used.

TRANSISTOR ILLUSTRATION



E C B

2SC1815
2SC2240
2SC3266
2SD655



E C B

2SA1015



E C B

2SA933
2SC1740
2SD2144
DTA124ES
DTA144ES
DTC114ES
DTC114YS



E C B

2SA1318
2SC3331



B C E

2SB1370

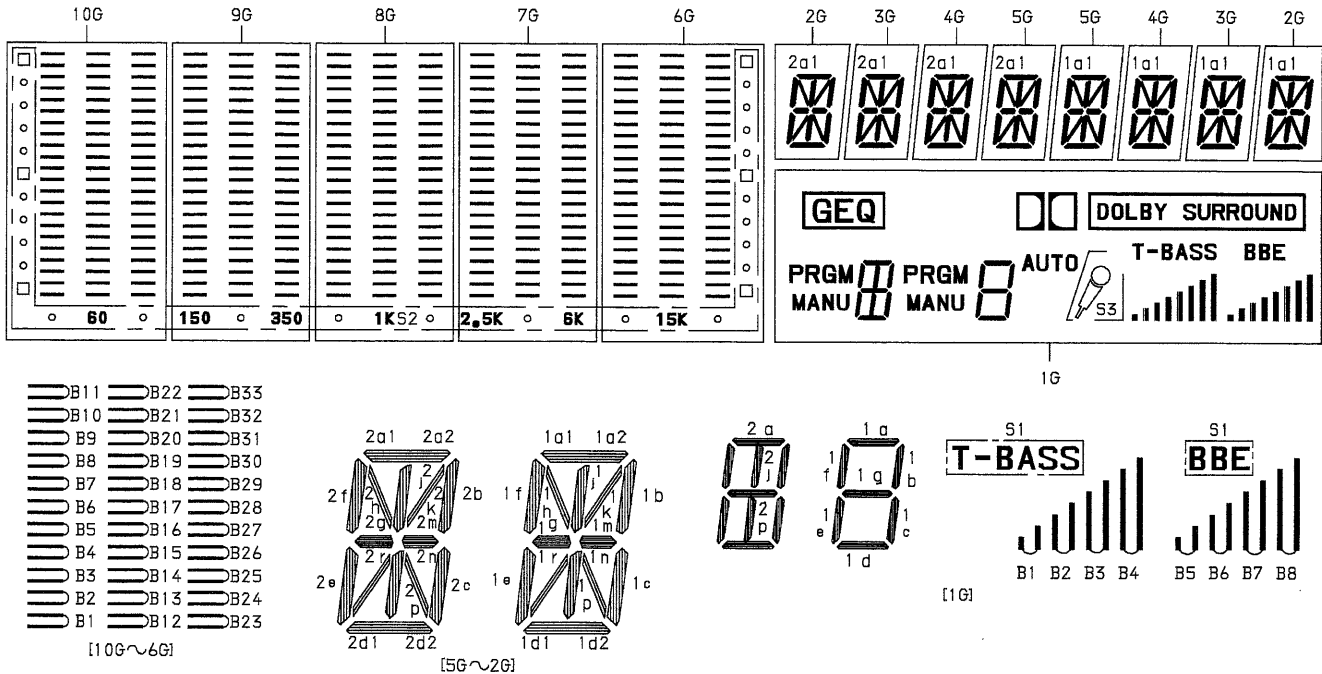


G D S

2SJ176
2SK1094

FL (BJ189GK) GRID ASSIGNMENT / ANODE CONNECTION

GRID ASSIGNMENT

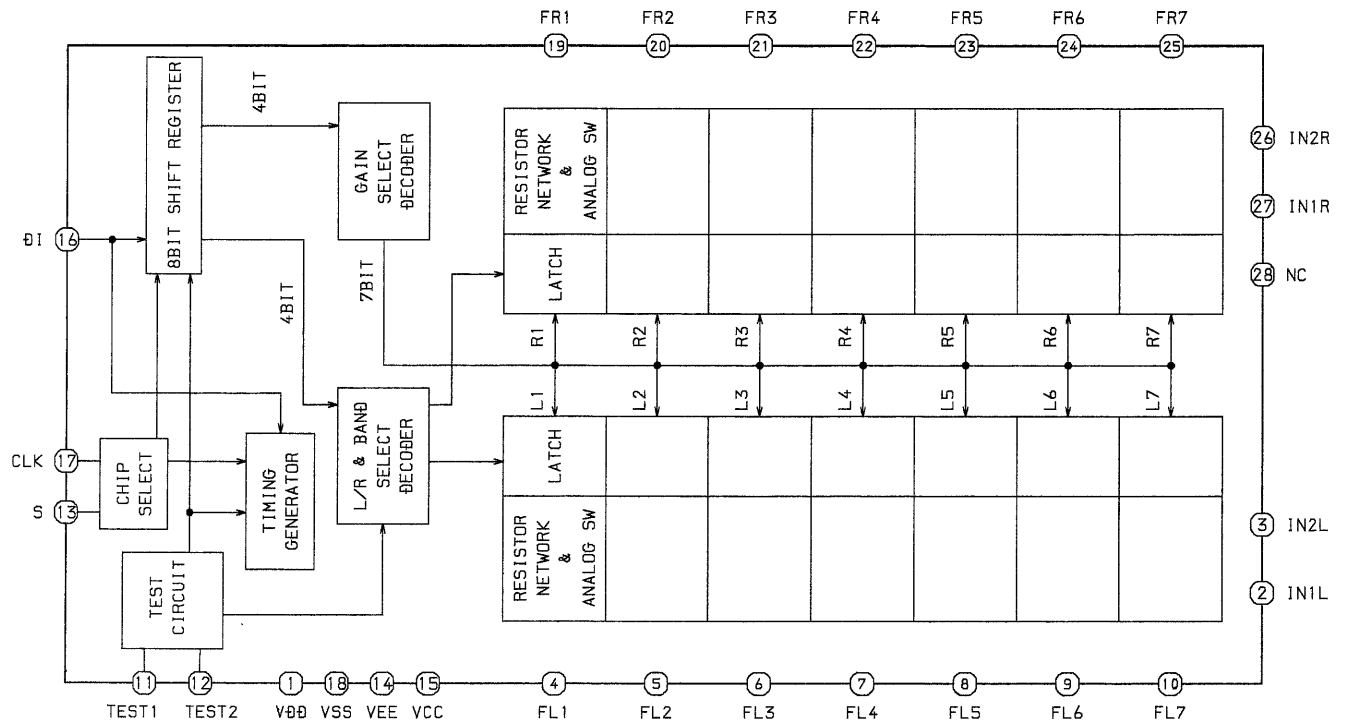


ANODE CONNECTION

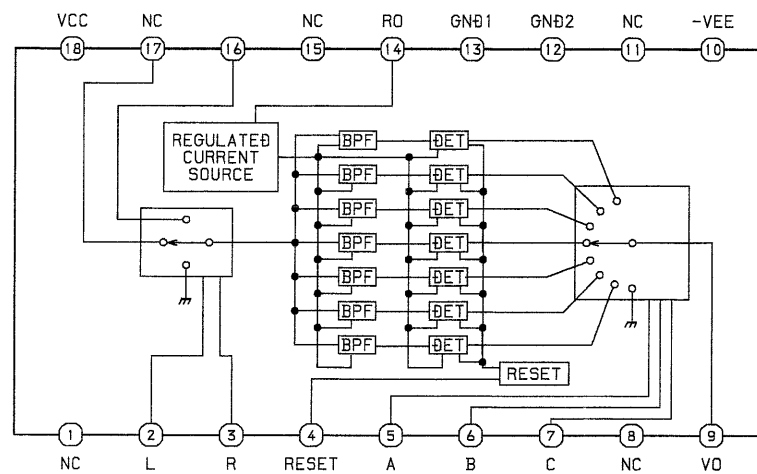
	10G	9G	8G	7G	6G	5G	4G	3G	2G	1G
P1	B1	B1	B1	B1	B1	1a2	1a2	1a2	1a2	B6
P2	B2	B2	B2	B2	B2	1k	1k	1k	1k	B3
P3	B3	B3	B3	B3	B3	1g	1g	1g	1g	SURROUND
P4	B4	B4	B4	B4	B4	1e	1e	1e	1e	AUTO
P5	B5	B5	B5	B5	B5	1p	1p	1p	1p	1a, 1d
P6	B6	B6	B6	B6	B6	2d2	2d2	2d2	2d2	[GEQ]
P7	B7	B7	B7	B7	B7	2n	2n	2n	2n	2b
P8	B8	B8	B8	B8	B8	2c	2c	2c	2c	-
P9	B9	B9	B9	B9	B9	2f	2f	2f	2f	2d
P10	B10	B10	B10	B10	B10	2h	2h	2h	2h	PRGM [GEQ]
P11	B11	B11	B11	B11	B11	2a1	2a1	2a1	2a1	1f
P12	B12	B12	B12	B12	B12	1a1	1a1	1a1	1a1	B7
P13	B13	B13	B13	B13	B13	1h	1h	1h	1h	B4
P14	B14	B14	B14	B14	B14	1f	1f	1f	1f	B1
P15	B15	B15	B15	B15	B15	1c	1c	1c	1c	[DOLBY]
P16	B16	B16	B16	B16	B16	1n	1n	1n	1n	1b
P17	B17	B17	B17	B17	B17	1d2	1d2	1d2	1d2	1e
P18	B18	B18	B18	B18	B18	2p	2p	2p	2p	2c
P19	B19	B19	B19	B19	B19	2e	2e	2e	2e	PRGM
P20	B20	B20	B20	B20	B20	2g	2g	2g	2g	2g
P21	B21	B21	B21	B21	B21	2k	2k	2k	2k	2f
P22	B22	B22	B22	B22	B22	2a2	2a2	2a2	2a2	-
P23	B23	B23	B23	B23	B23	-	-	-	-	B8
P24	B24	B24	B24	B24	B24	1j	1j	1j	1j	B5
P25	B25	B25	B25	B25	B25	1b	1b	1b	1b	B2
P26	B26	B26	B26	B26	B26	1m	1m	1m	1m	S3
P27	B27	B27	B27	B27	B27	1r	1r	1r	1r	1c
P28	B28	B28	B28	B28	B28	1d1	1d1	1d1	1d1	1g
P29	B29	B29	B29	B29	B29	2d1	2d1	2d1	2d1	2a
P30	B30	B30	B30	B30	B30	2r	2r	2r	2r	MANU
P31	B31	B31	B31	B31	B31	2m	2m	2m	2m	2j, 2p
P32	B32	B32	B32	B32	B32	2b	2b	2b	2b	2e
P33	B33	B33	B33	B33	B33	2j	2j	2j	2j	MANU [GEQ]
P34	S2	S2	S2	S2	S2	-	-	-	-	-
P35	-	-	-	-	-	-	-	-	-	GEQ S1

IC BLOCK DIAGRAM – 1

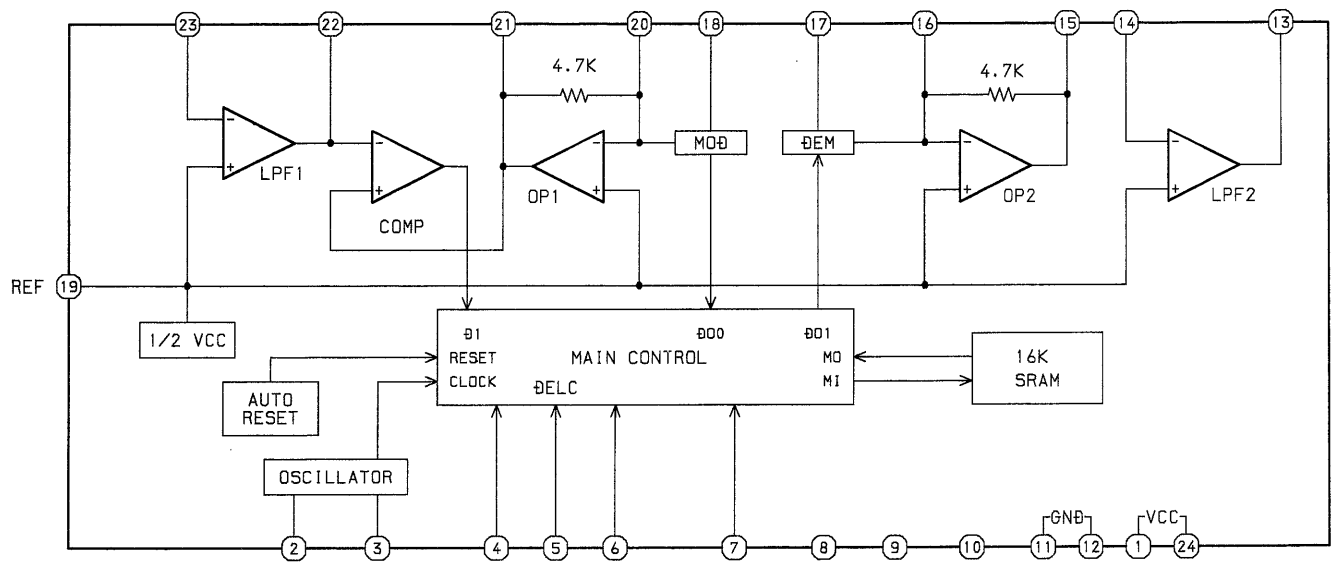
IC, NJU7305L



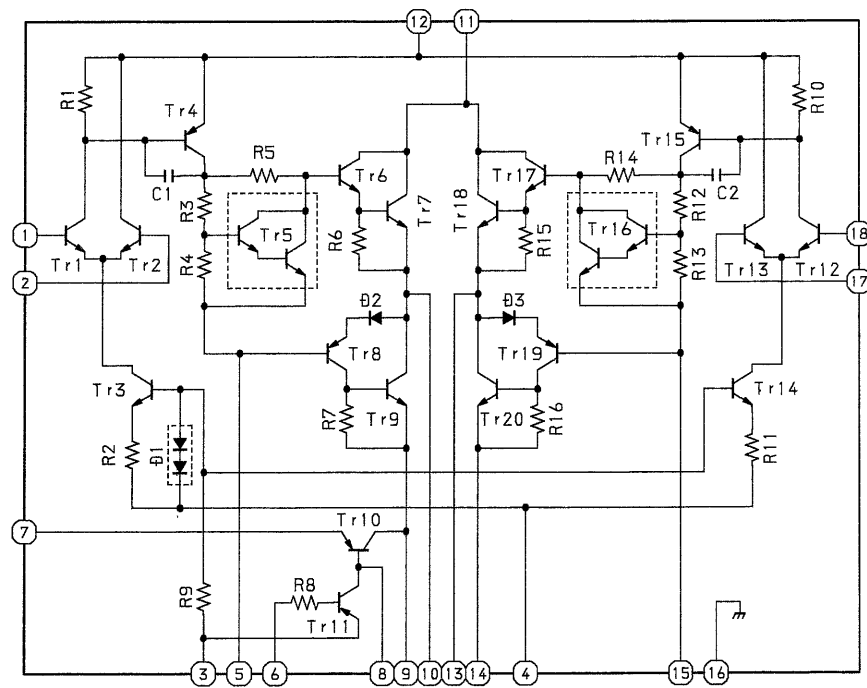
IC, BA3826S



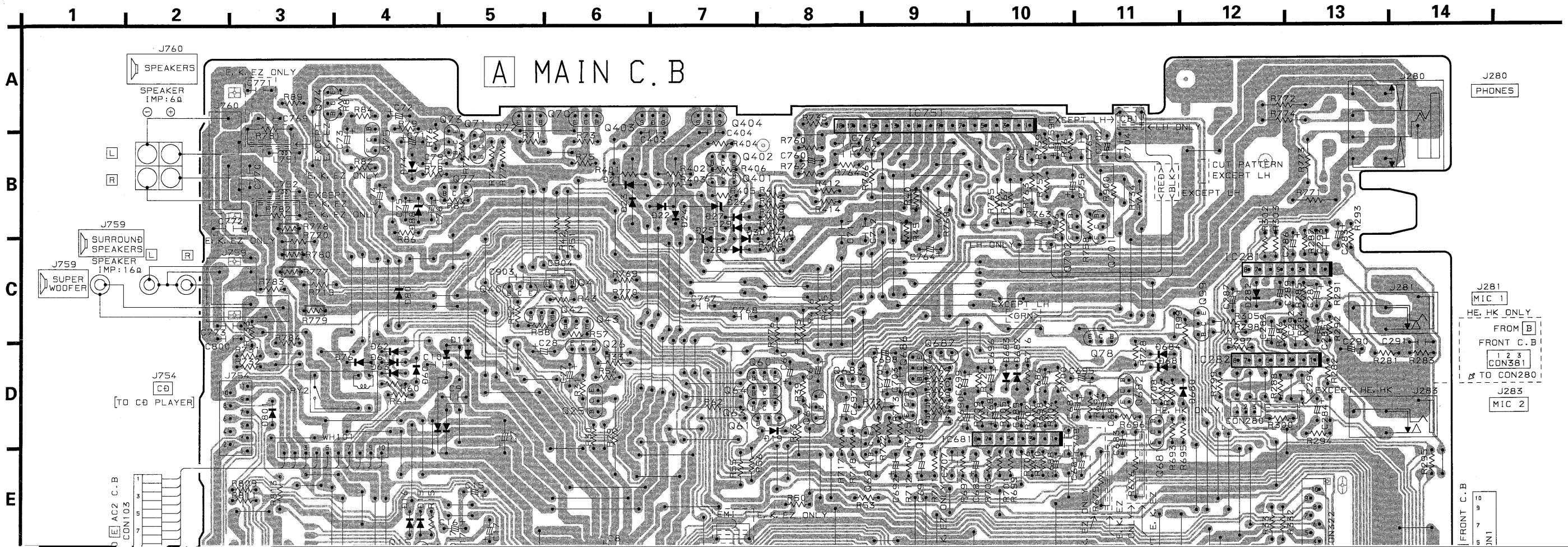
IC, M65830P
IC, M65830AFP



IC, STK4192-MK2

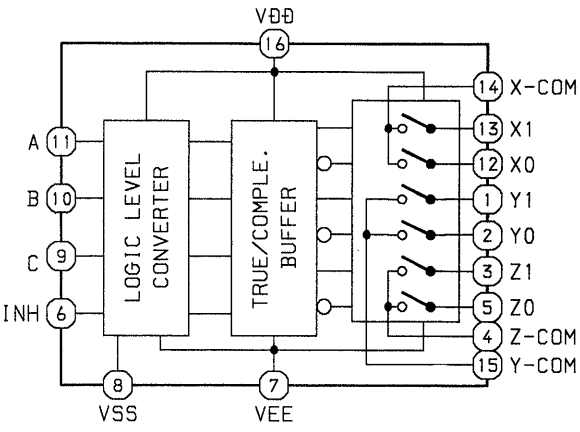


WIRING – 1 (MAIN)

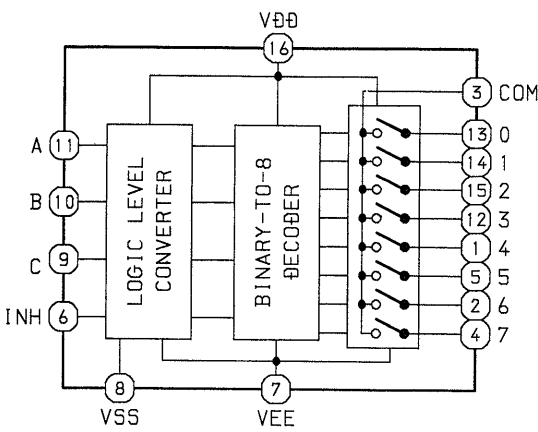


IC BLOCK DIAGRAM.- 2

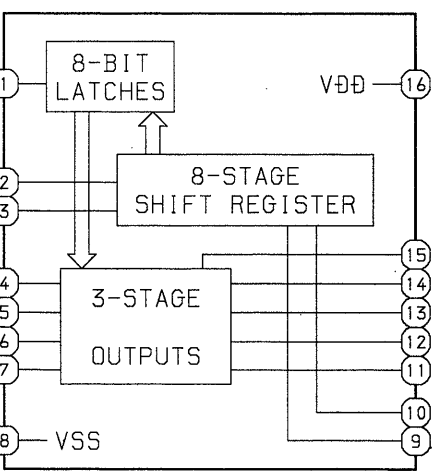
IC, TC4053BP



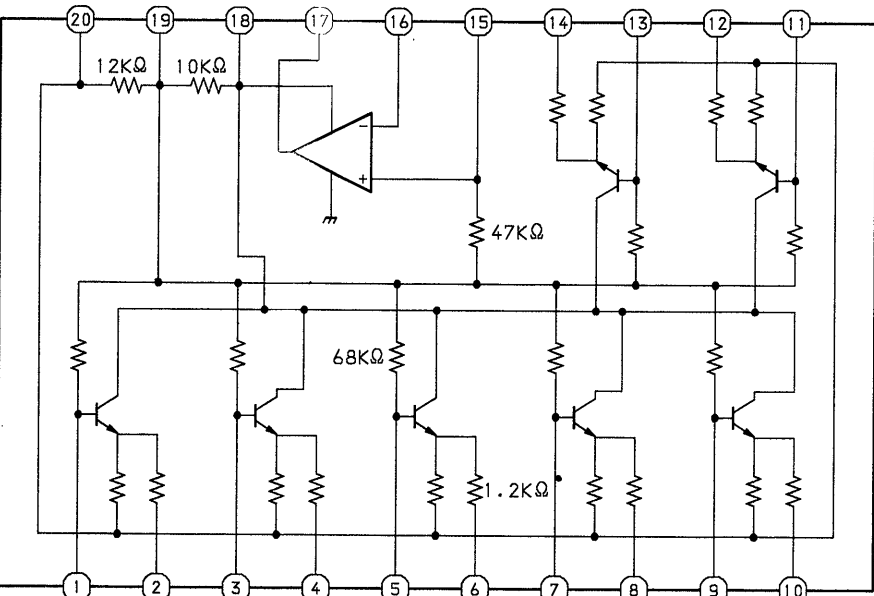
IC, TC4051BP



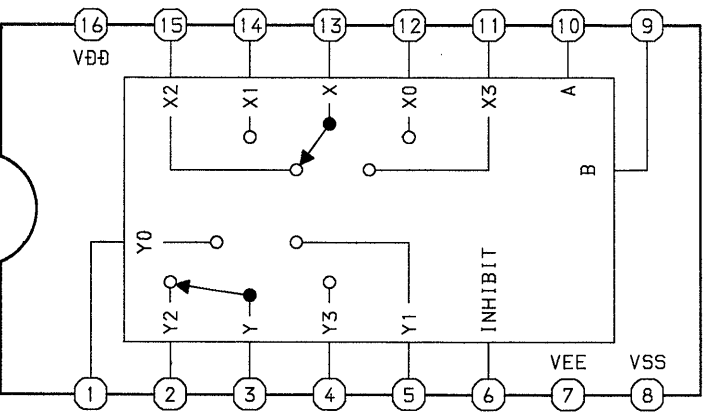
IC, TC4094BP



IC, LA3607



IC, TC4052BP

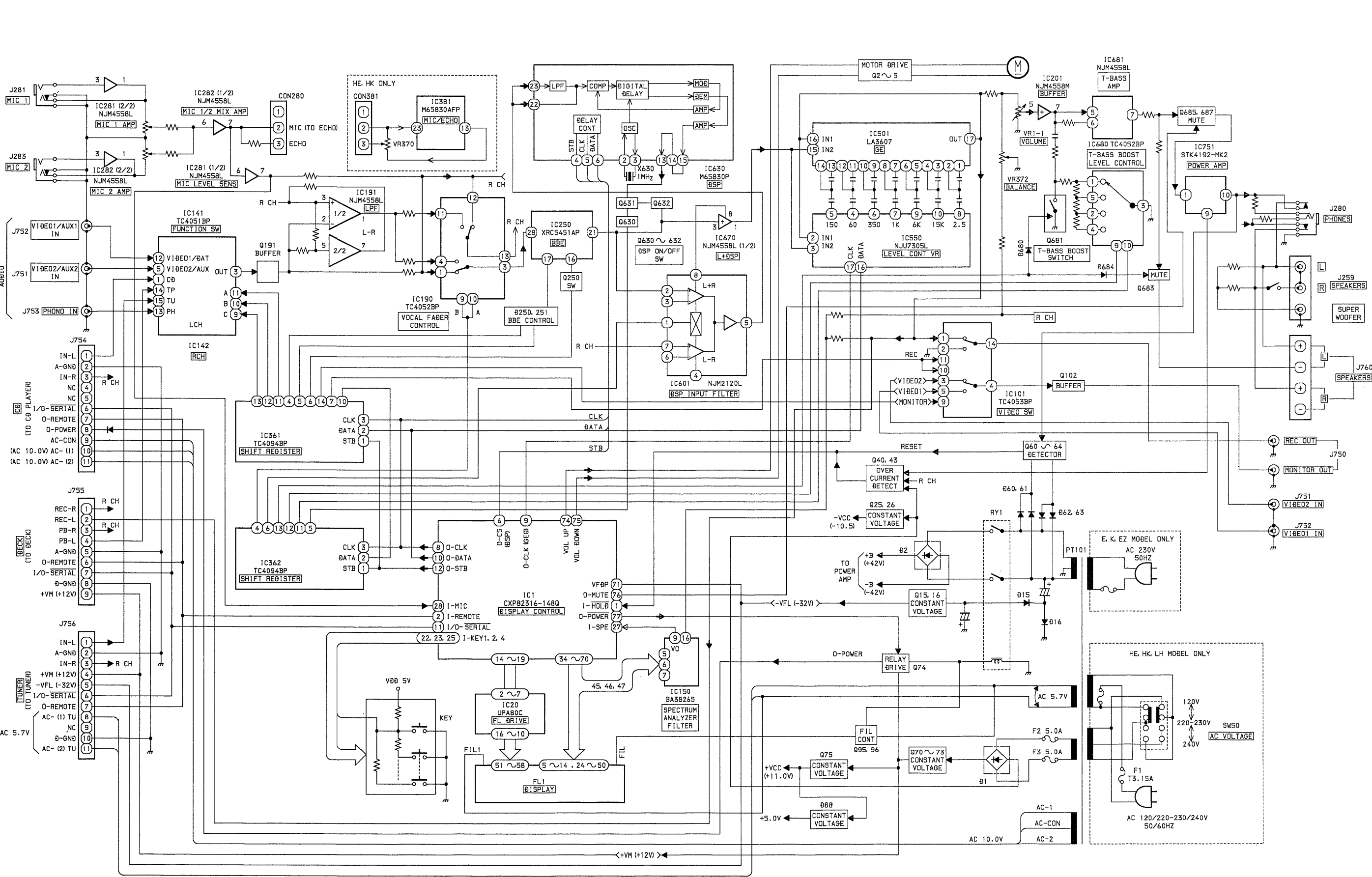


TRUTH TABLE

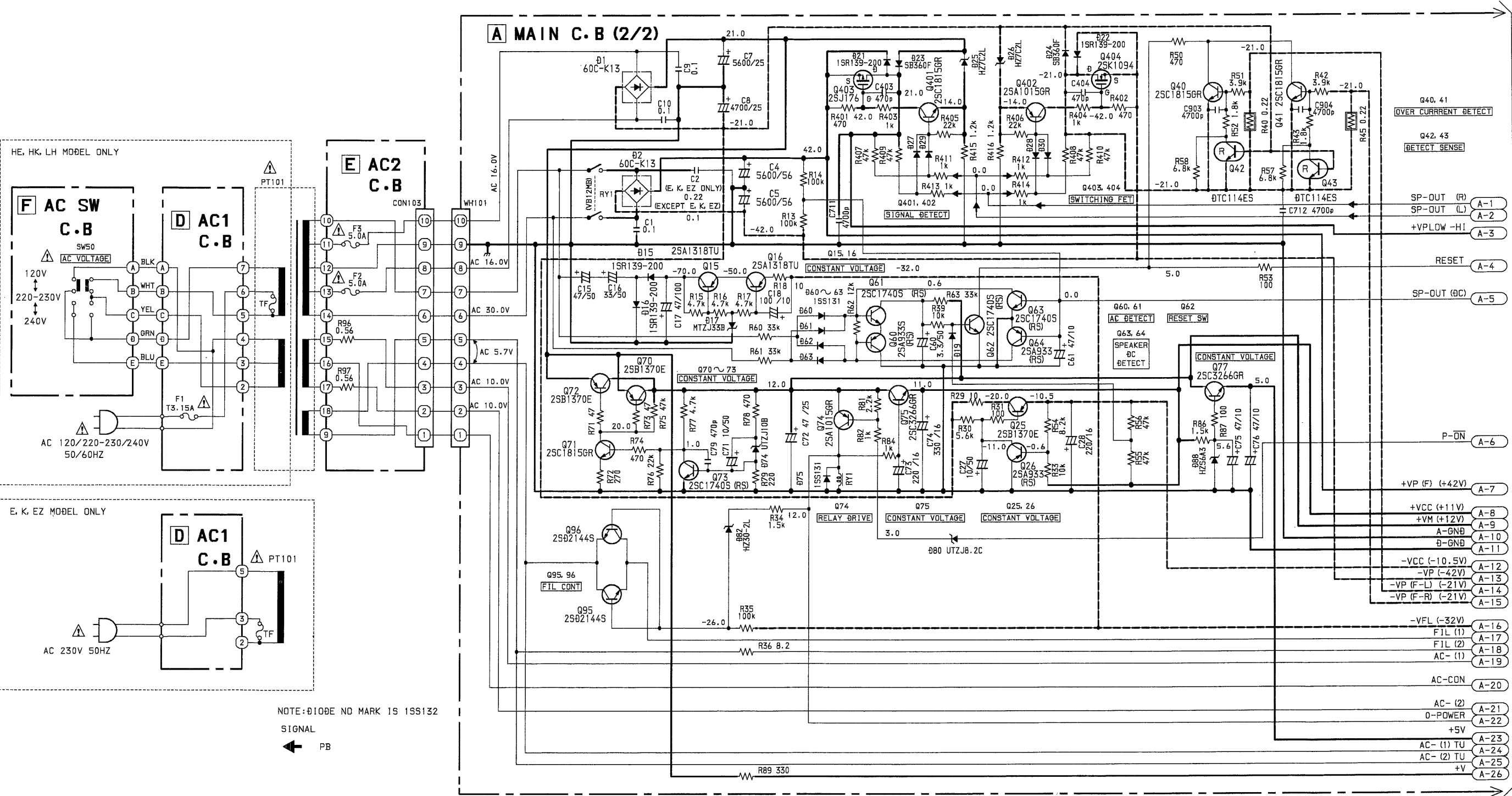
CONTROL INPUTS			ON SWITCH	
INHIBIT	B	A	Y0	X0
L	L	L	Y0	X0
L	L	H	Y1	X1
L	H	L	Y2	X2
L	H	H	Y3	X3
H	X	X	-	-

L: LOW LEVEL
H: HIGH LEVEL
X: IRRELEVANT

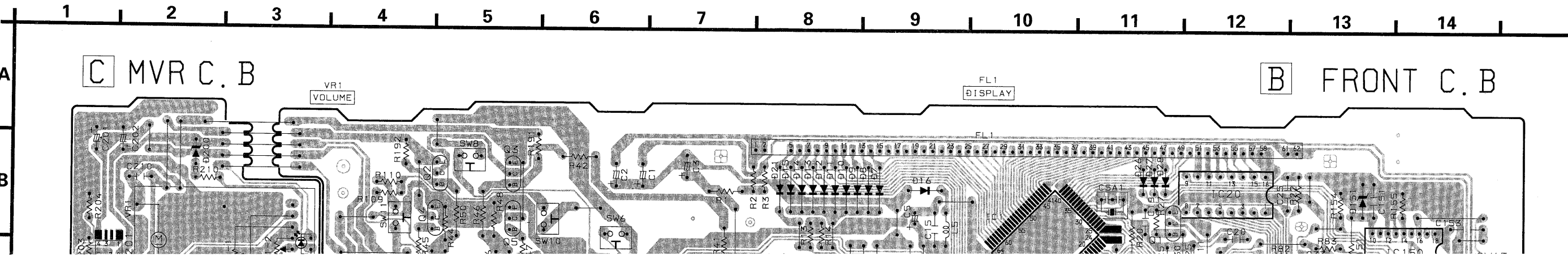
BLOCK DIAGRAM



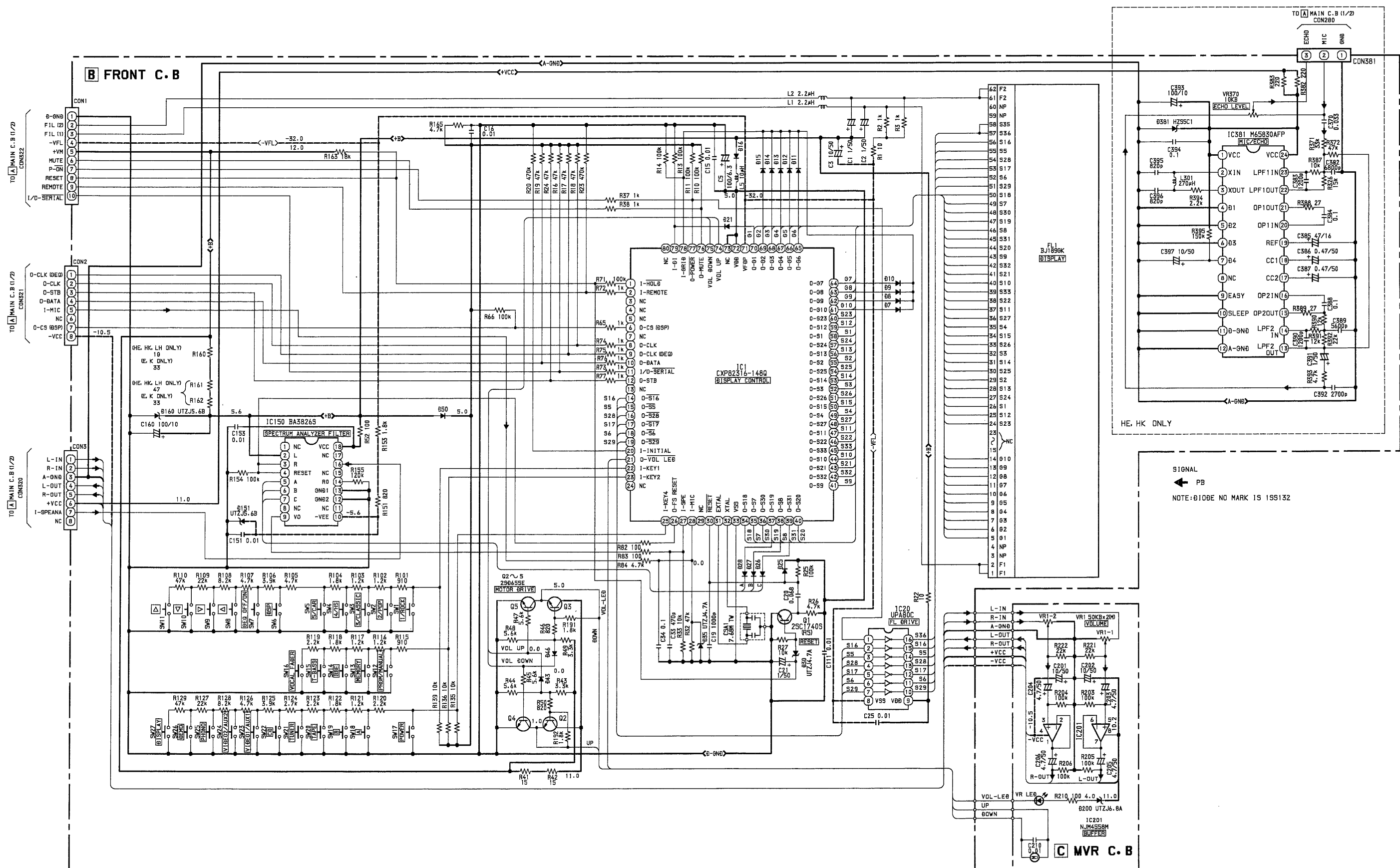
SCHEMATIC DIAGRAM – 2 (MAIN)



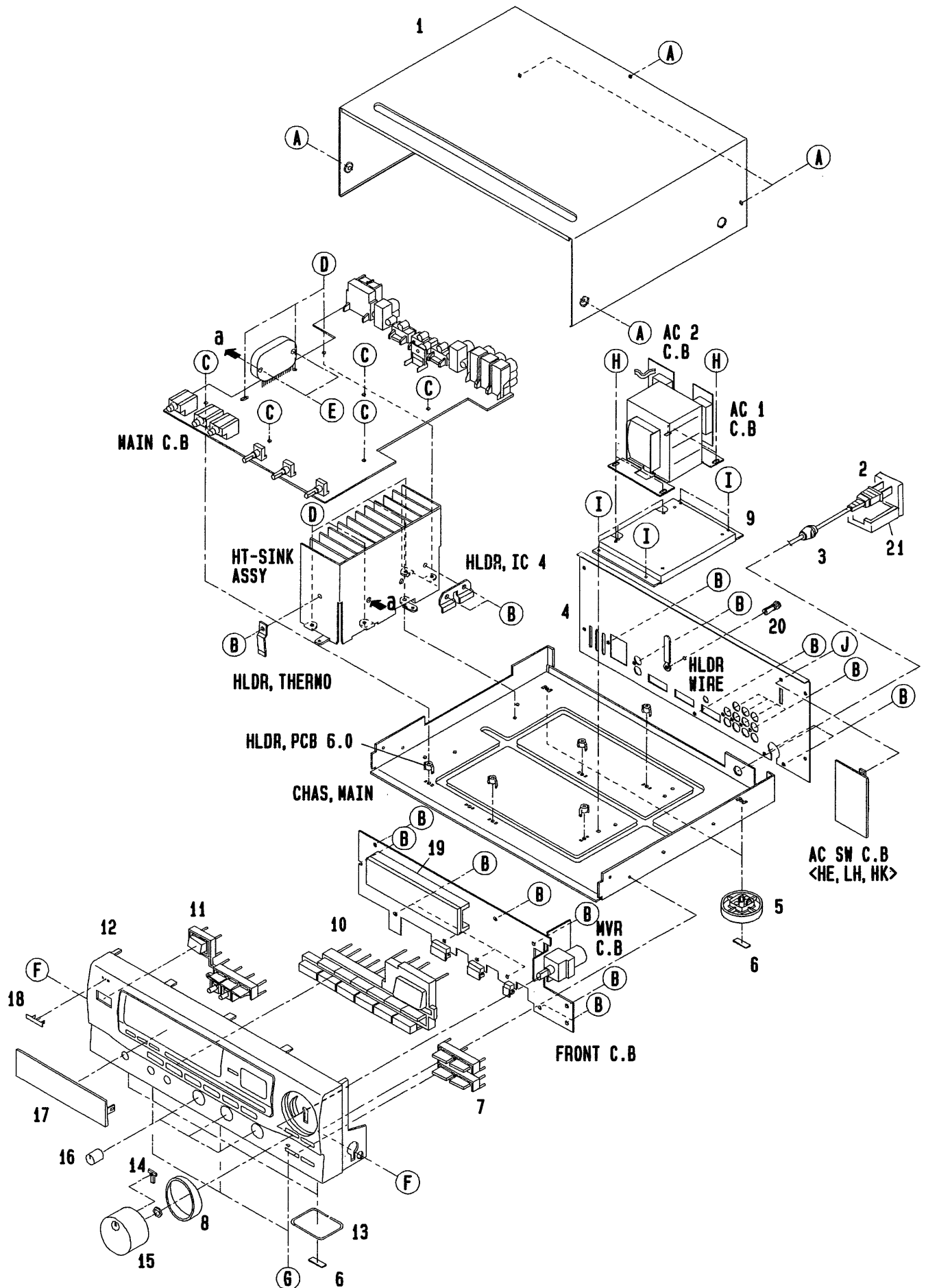
WIRING - 2 (FRONT)



SCHEMATIC DIAGRAM – 3 (FRONT)



MECHANICAL EXPLODED VIEW 1 / 1



MECHANICAL PARTS LIST 1 / 1

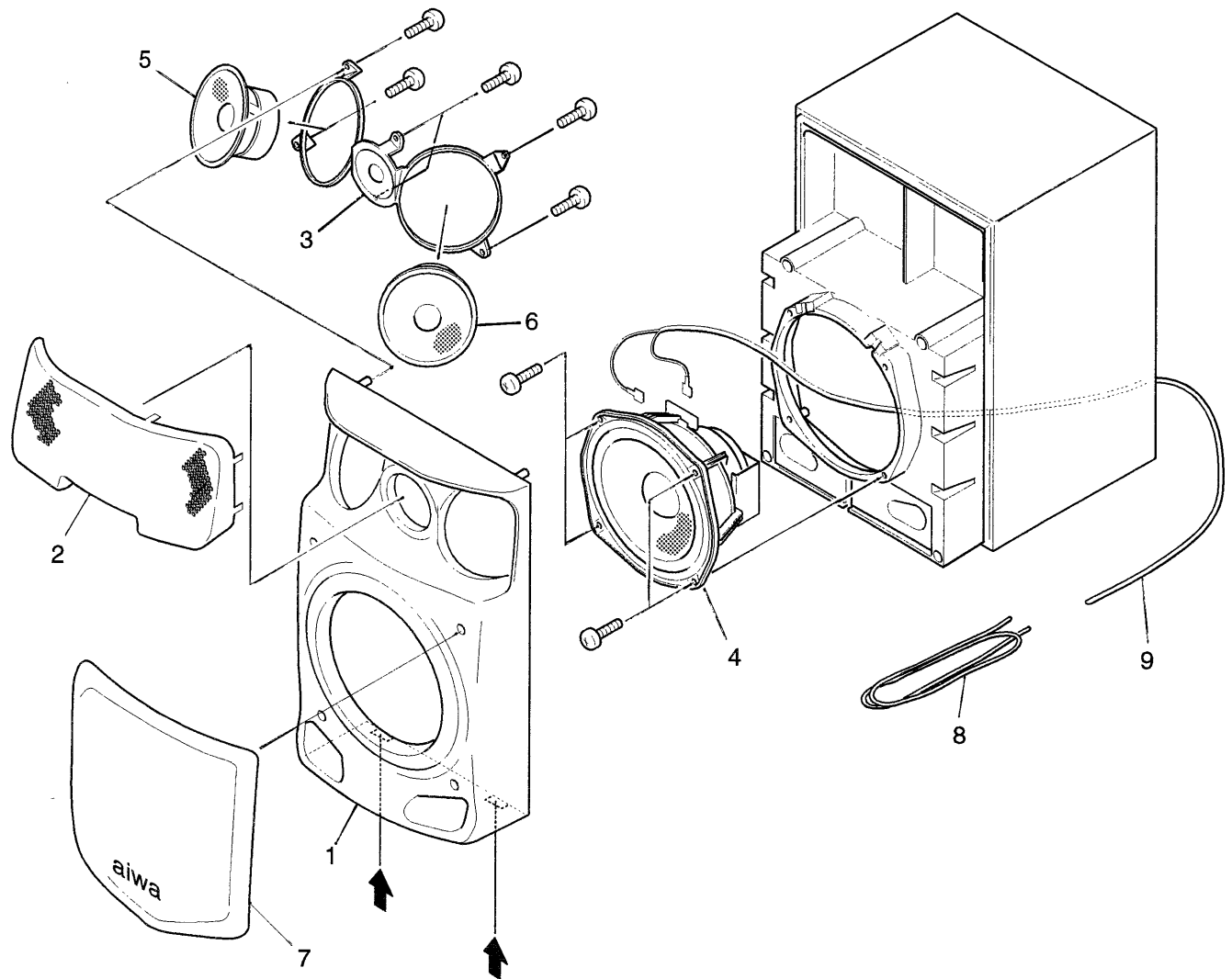
If can't understand for Description please kindly refer to "REFERENCE NAME LIST".

REF. NO.	PART NO.	KANRI NO.	DESCRIPTION	REF. NO.	PART NO.	KANRI NO.	DESCRIPTION
	1	82-VP2-011-019	CAB,STEEL	18	82-NE8-032-019		BADGE AIWA 27.5
△	2	87-050-100-019	AC CORD ASSY K3P<K>	19	82-VP2-203-019		GUIDE,FL
△	2	87-050-079-019	AC CORD ASSY,E<EXCEPT K>	20	87-084-077-019		NYLON RIVET DIA 3.5 - 4.5
	3	87-085-185-010	BUSHING,AC CORD E	△	21	87-099-811-018	PLUG,ADPTR<HK>
	4	85-VP3-012-019	PANEL,REAR EEBN<EE>	A	87-067-641-019		UTT2+3-8 W/O SLOT BLK
	4	85-VP3-004-019	PANEL,REAR EZBN<EEZ,EZ>	B	87-067-660-019		BVT2+3-8W/O SLOT BLK
	4	85-VP3-002-019	PANEL,REAR HEJBN<HE>	C	87-067-758-019		BVT2+3-12(W/O SLOT)
	4	85-VP3-014-019	PANEL,REAR HKJBN<HK>	D	87-067-584-019		BVT2+3-6 W/O SLOT
	4	85-VP3-009-019	PANEL,REAR KBN<K>	E	87-067-581-019		BVT2+3-15 W/O SLOT
	4	85-VP3-007-019	PANEL,REAR LHBN<LH>	F	87-591-094-419		QIT + 3 - 6 GOLD
	5	81-VX1-012-019	FOOT, REAR	G	87-067-716-019		BVTT+3-6 BLK
	6	82-VW2-211-019	FELT,20-7.5-2	H	87-067-975-019		S-SCREW IT+4-8
	7	85-VP1-005-019	KEY,BBE	I	87-067-585-019		BVTT +4-6
	8	85-VP1-007-019	RING,VOL	J	80-VP2-202-019		S SCREW VT2BLK<HE,LH,HK>
	9	81-VP1-216-110	HLDR,PT				
	10	85-VP3-005-019	KEY,FUN				
	11	85-VP1-003-019	KEY,POWER				
	12	85-VP3-003-019	CAB,FR E<EE,K,EEZ,EZ>				
	12	85-VP3-001-019	CAB,FR H<HE,HK>				
	12	85-VP3-006-019	CAB,FR LH<LH>				
	13	84-VM5-013-010	RING,FOOT				
	14	82-NE6-016-019	IND,MAIN (VOL)				
	15	85-VP1-008-019	KNOB,VOL				
	16	83-NF6-020-019	KNOB,MIC				
	17	85-VP1-006-019	WINDOW,AMP				

MODEL NO.

SX-FZ3300

SPEAKER EXPLODED VIEW 1/1



矢印の位置にマイナスドライバーを差し込んで、パネルをはずして、
各々のスピーカー・ユニットのビスを取り、スピーカー・ユニット
をはずしてください。

Insert a flat - bladed screwdriver into the position indicated by the arrows
and remove the panel. Remove the screws of each speaker unit and then
remove the speaker units.

SPEAKER PARTS LIST 1/1

If can't understand for Description please kindly refer to "REFERENCE NAME LIST".

REF. NO.	PART NO.	KANRI NO.	DESCRIPTION	REF. NO.	PART NO.	KANRI NO.	DESCRIPTION
1	85-MS3-004-010		PANEL FR	6	83-NS5-610-010		SPEAKER
2	85-MS3-007-010		SPEAKER GRILL	7	85-MS3-008-010		GRILL FRAME ASSY
3	85-MS3-005-010		ADAPTOR ASSY	8	85-MS3-610-010		SPEAKER CORD ASSY Y/B
4	84-VS3-601-010		SPEAKER WOOFER	9	85-MS3-611-010		SPEAKER CORD ASSY
5	83-NS5-608-010		SPEAKER MID H				

REFERENCE NAME LIST

ELECTRICAL SECTION

DESCRIPTION	REFERENCE NAME
ANT	ANTENNAS
C-	CHIP
C-CAP	CAP, CHIP
C-CAP TN	CAP, CHIP TANTALUM
C-COIL	COIL, CHIP
C-DI	DIODE, CHIP
C-DIODE	DIODE, CHIP
C-FET	FET, CHIP
C-FOTR	FILTER, CHIP
C-JACK	JACK, CHIP
C-LED	LED, CHIP
C-RES	RES, CHIP
C-SFR	SFR, CHIP
C-SLIDE SW	SLIDE SWITCH, CHIP
C-SW	SWITCH, CHIP
C-TR	TRANSISTOR, CHIP
C-VR	VOLUME, CHIP
C-ZENER	ZENER, CHIP
CAP, CER	CAP, CERA-SOL
CAP, E	CAP, ELECT
CAP, M/F	CAP, FILM
CAP, TC	CAP, CERA-SOL
CAP, TC-U	CAP, CERA-SOL SS
CAP, TN	CAP, TANTALUM
CERA FIL	FILTER, CERAMIC
CF	FILTER, CERAMIC
DL	DELAY LINE
E/CAP	CAP, ELECT
FILT	FILTER
FLTR	FILTER
FUSE RES	RES, FUSE
MOT	MOTOR
P-DIODE	PHOTO DIODE
P-SNSR	PHOTO SENSER
P-TR	PHOTO TRANSISTOR
POLY VARI	VARIABLE CAPACITOR
PCAP	CAP, PP
PT	POWER TRANSFORMER
PTR, RES	PTR, MELF
RC	REMOTE CONTROLLER
RES NF	RES, NON-FLAMMABLE
RESO	RESONATOR
SHLD	SHIELD
SOL	SOLENOID
SPKR	SPEAKER
SW, LVR	SWITCH, LEVER
SW, RTRY	SWITCH, ROTARY
SW, SL	SWITCH, SLIDE
TC CAP	CAP, CERA-SOL
THMS	THERMISTOR
TR	TRANSISTOR
TRIMER	CAP, TRIMER
TUN-CAP	VARIABLE CAPACITOR
VIB, CER	RESONATOR, CERAMIC
VIB, XTAL	RESONATOR, CRYSTAL
VR	VOLUME
ZENER	DIODE, ZENER

MECHANICAL SECTION

DESCRIPTION	REFERENCE NAME
ADHESHIVE	SHEET ADHESHIVE
AZ	AZIMUTH
BAR-ANT	BAR-ANTENNA
BAT	BATTERY
BATT	BATTERY
BRG	BEARING
BTN	BUTTON
CAB	CABINET
CASS	CASSETTE
CHAS	CHASSIS
CLR	COLLAR
CONT	CONTROL
CRSR	CURSOR
CU	CUSHION
CUSH	CUSHION
DIR	DIRECTION
DUBB	DUBBING
FL	FRONT LOADING
FLY-WHL	FLYWHEEL
FR	FRONT
FUN	FUNCTION
G-CU	G-CUSHION
HDL	HANDOL
HIMERON	CLOTH
HINGE, BAT	HINGE, BATTERY
HLDR	HOLDER
HT-SINK	HEAT SINK
IB	INSTRUCTION BOOKLET
IDLE	IDLER
IND, L-R	INDICATOR, L-R
KEY, CONT	KEY, CONTROL
KEY, PRGM	KEY, PROGRAM
KNOB, SL	KNOB, SLIDE
LBL	LABEL
LID, BATT	LID, BATTERY
LID, CASS	LID, CASSETTE
LVR	LEVER
P-SP	P-SPRING
PANEL, CONT	PANEL, CONTROL
PANEL, FR	PANEL, FRONT
PRGM	PROGRAM
PULLY, LOAD MO	PULLY, LOAD MOTOR
RBN	RIBBON
S-	SPECIAL
SEG	SEGMENT
SH	SHEET
SHLD-SH	SHIELD-SHEET
SL	SLIDE
SP	SPRING
SP-SCREW	SPECIAL-SCREW
SPACER, BAT	SPACER, BATTERY
SPR	SPRING
SPR-P	P-SPRING
SPR-PC-PUSH	P-SPRING, C-PUSH
T-SP	T-SPRING
TERM	TERMINAL
TRIG	TRIGGER
TUN	TUNING
VOL	VOLUME
W	WASHER
WHL	WHEEL
WORM-WHL	WORM-WHEEL

サービス技術ニュース	
番号	連絡内容
G - -	
G - -	
G - -	

アイワ株式会社
AIWA CO.,LTD.

9420025, 750038

Tokyo Japan