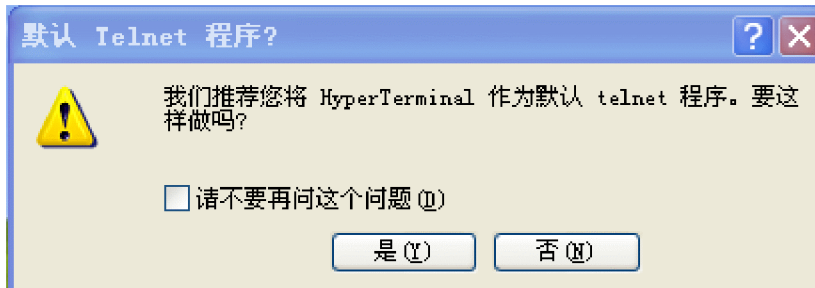


串口升级方式

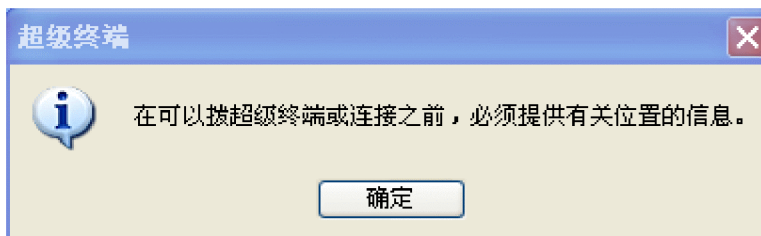
1), 先将电脑的超级终端打开。Open the computer super terminal.
Start-Program-accessory-communications-super terminal .



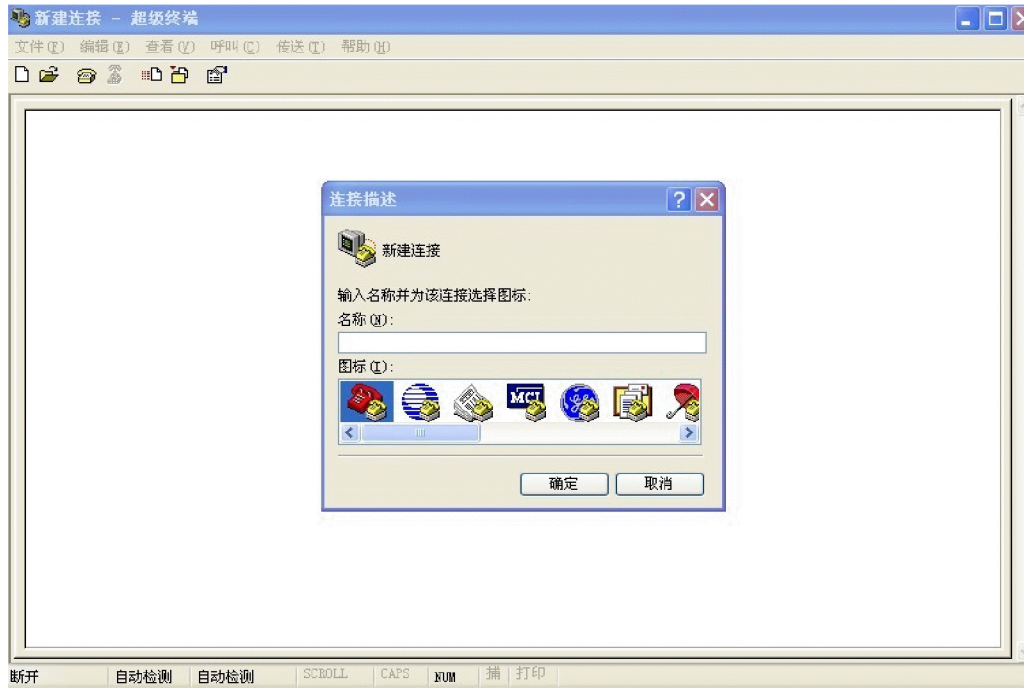
2) Press "N" to enter into following window menu



3) Press "Cancel" to enter into following window menu



4) Press "Confirm" to enter into following window menu



5) Input a name in the name blank. take "a" for example as following picture.



6) Press "Confirm" to enter into following window menu.



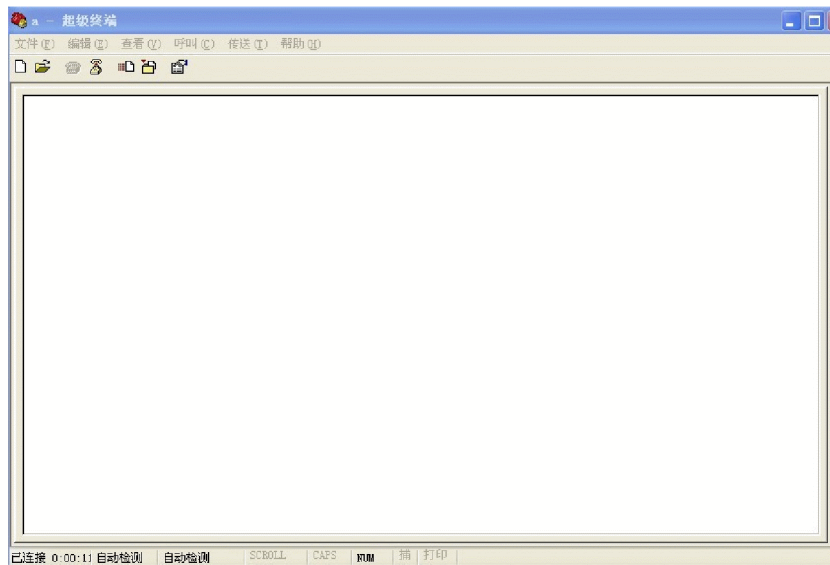
7) Select the connecting port (USB Defined connecting port which you will use it to connect to the upgrading tooling to installing the driver,COM1,COM2 or COM4 according to your computer....)



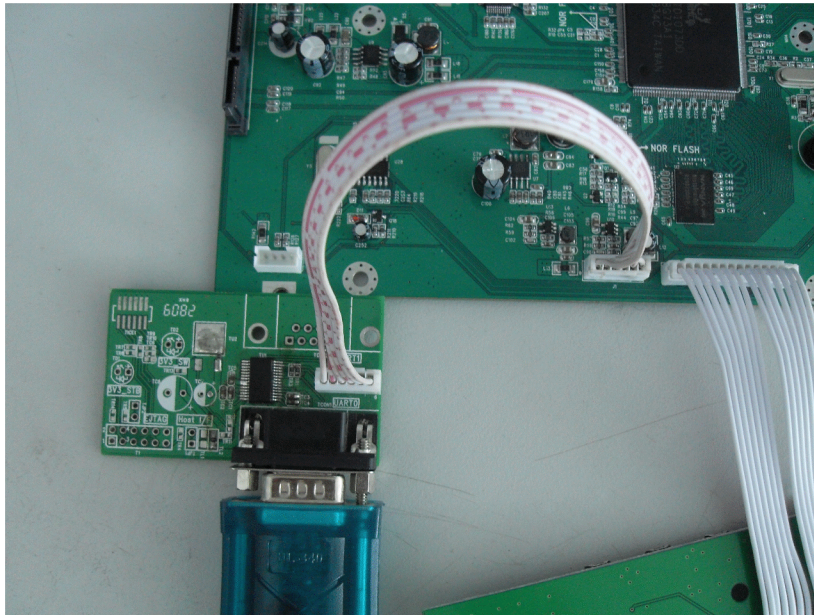
8) Setup the parameter as follow menu, digit/s: 11520 , data stream control setting: no



9) Press "A(application)" and "Confirm" to enter into following window menu



10) Connecting well the upgrading tooling pcba and realtek product pcba (BT3548HL-R or BT3584HL-R) by the cable.



11) Connect the upgrading tooling to pc, plug on the realtek pcba(BT3548HL-R or BT3584HL-R), press the “ESC”button of keyboard of PC,and then power on the realtek pcba(BT3548HL-R or BT3584HL-R) by power button. Until you can see the following precoessing of upgrading,release the “ESC”button.

```
a - 超级终端
文件(F) 编辑(E) 查看(V) 呼叫(C) 传送(T) 帮助(H)
[Icons]
REALTEK ROM Monitor, Revision 0000.0202.0012.
Copyright (c) Realtek Semiconductor Corp. - All Rights Reserved.

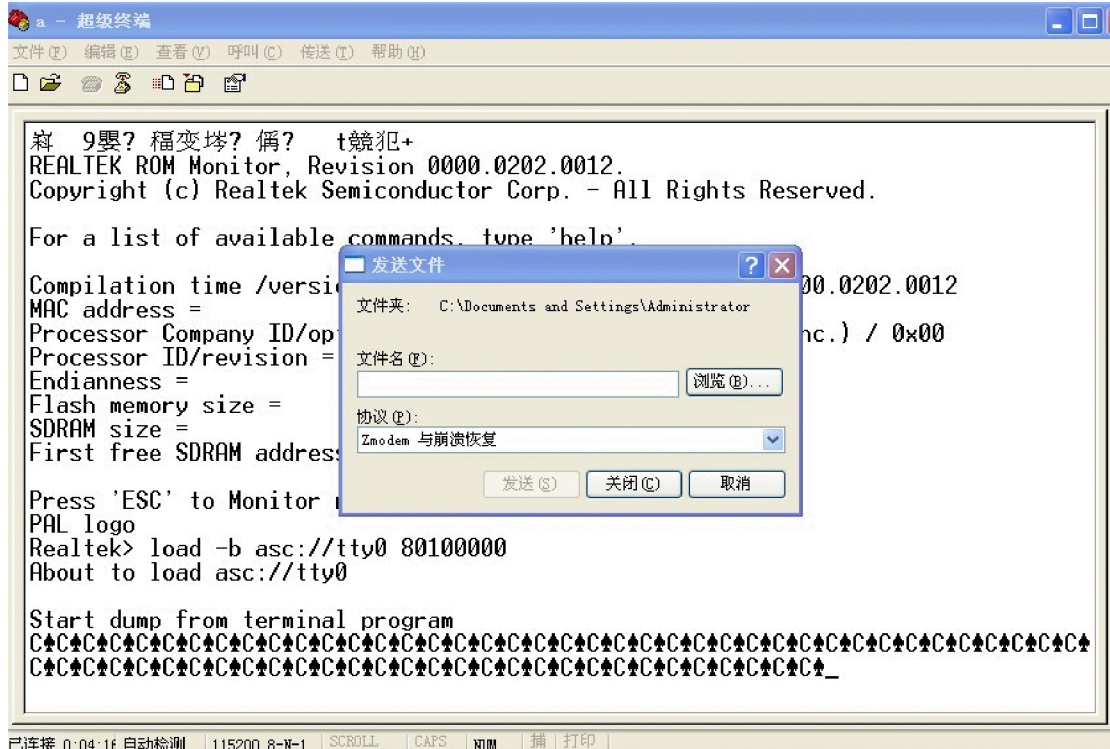
For a list of available commands, type 'help'.

Compilation time /version=      Nov 11 2009 20:17:13 /0000.0202.0012
MAC address =                   00.11.22.33.44.55
Processor Company ID/options =  0x01 (MIPS Technologies, Inc.) / 0x00
Processor ID/revision =        0x93 / 0x78
Endianness =                   Little
Flash memory size =            256 MByte
SDRAM size =                    128 MByte
First free SDRAM address =     0x800fc000

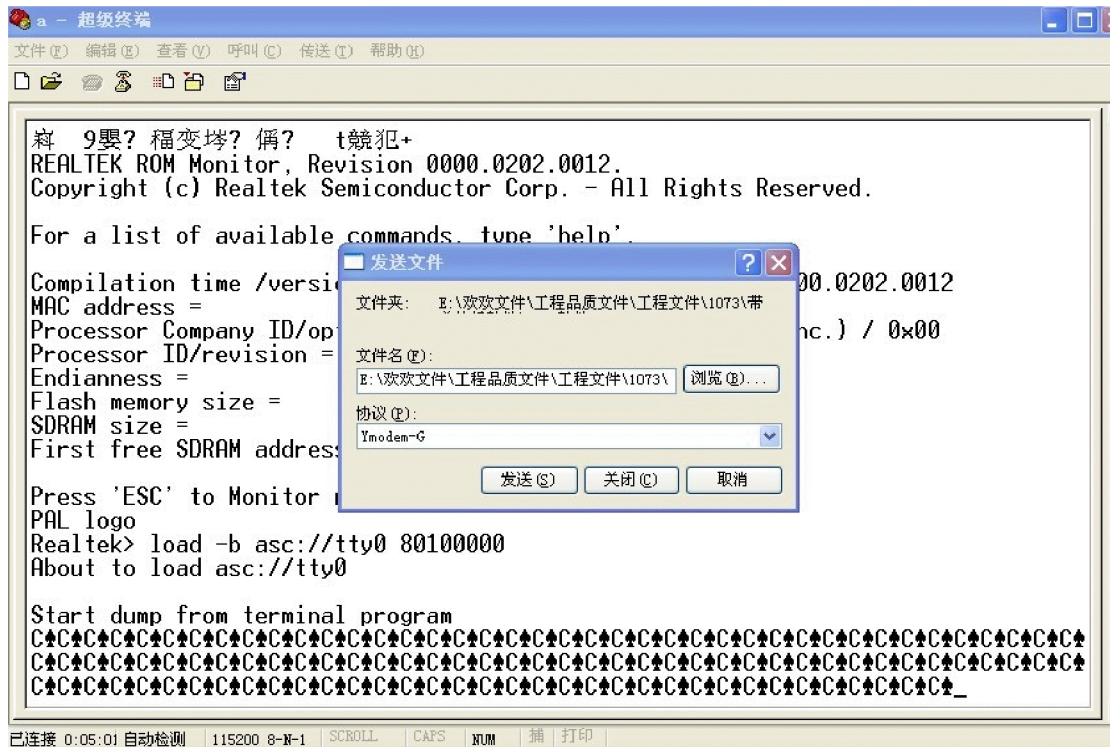
Press 'ESC' to Monitor mode
PAL logo
Realtek>
```

已连接 0:00:58 自动检测 115200 8-N-1 SCROLL CAPS NUM 捕 打印

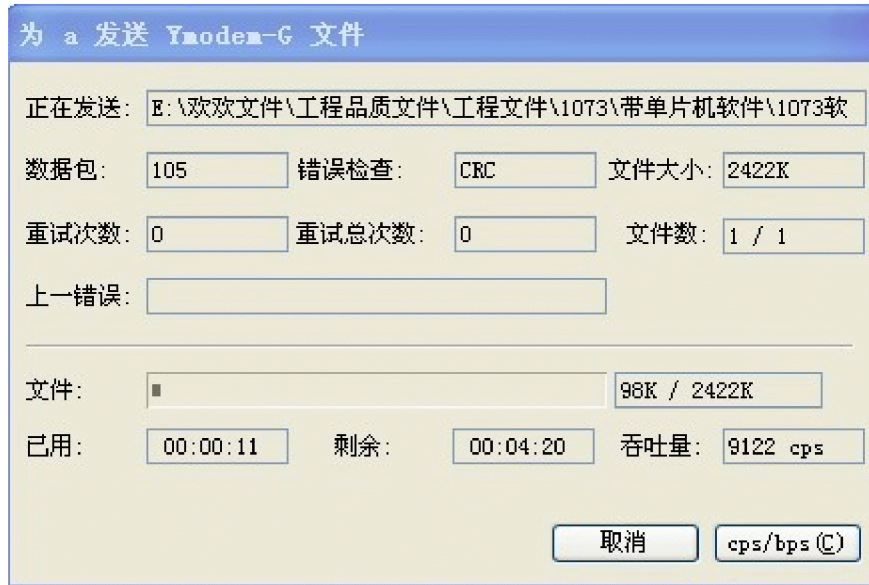
12) backword REALTEK>, input “ load -b asc://tty0 80100000 “ as following window



15) input the “ 1073_c0000_Deimos_avhdd_pal.0000.0202.0017_中性.bin” firmware,choose “Ymodem-G” from agreement as the following menu



16) Press”Sending”



17) After finishing sending,press"cancel" button,you will see the following picture.

