
5. Schematic Diagrams

◆ Block Identification of Main PCB - - - - -	5-2
5-1 S.M.P.S. (230 Voltage) - - - - -	5-3
5-2 S.M.P.S. (Free Voltage) - - - - -	5-4
5-3 Power Drive - - - - -	5-5
5-4 System Control/Servo - - - - -	5-6
5-5 Audio/Video - - - - -	5-7
5-6 Secam - - - - -	5-8
5-7 Input-Output - - - - -	5-9
5-8 Remote-Control (Multi-TV) - - - - -	5-10
5-9 Remote-Control (VCR Only) - - - - -	5-11

Note

For schematic Diagram
 - Resistors are in ohms, 1/8W unless otherwise noted.

Special note :

Most semiconductor devices are electrostatically sensitive and therefore require the special handling techniques described under the "electrostatically sensitive (ES) devices" section of this service manual.

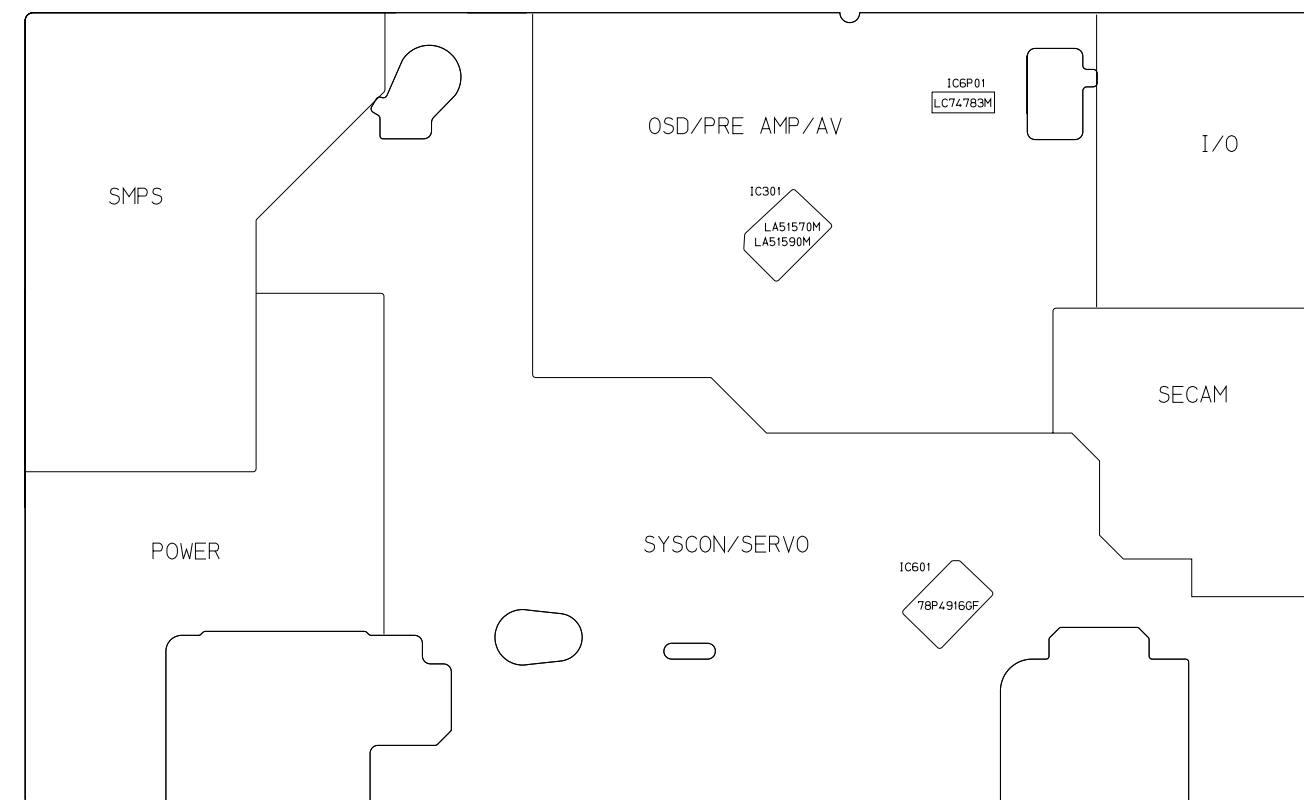
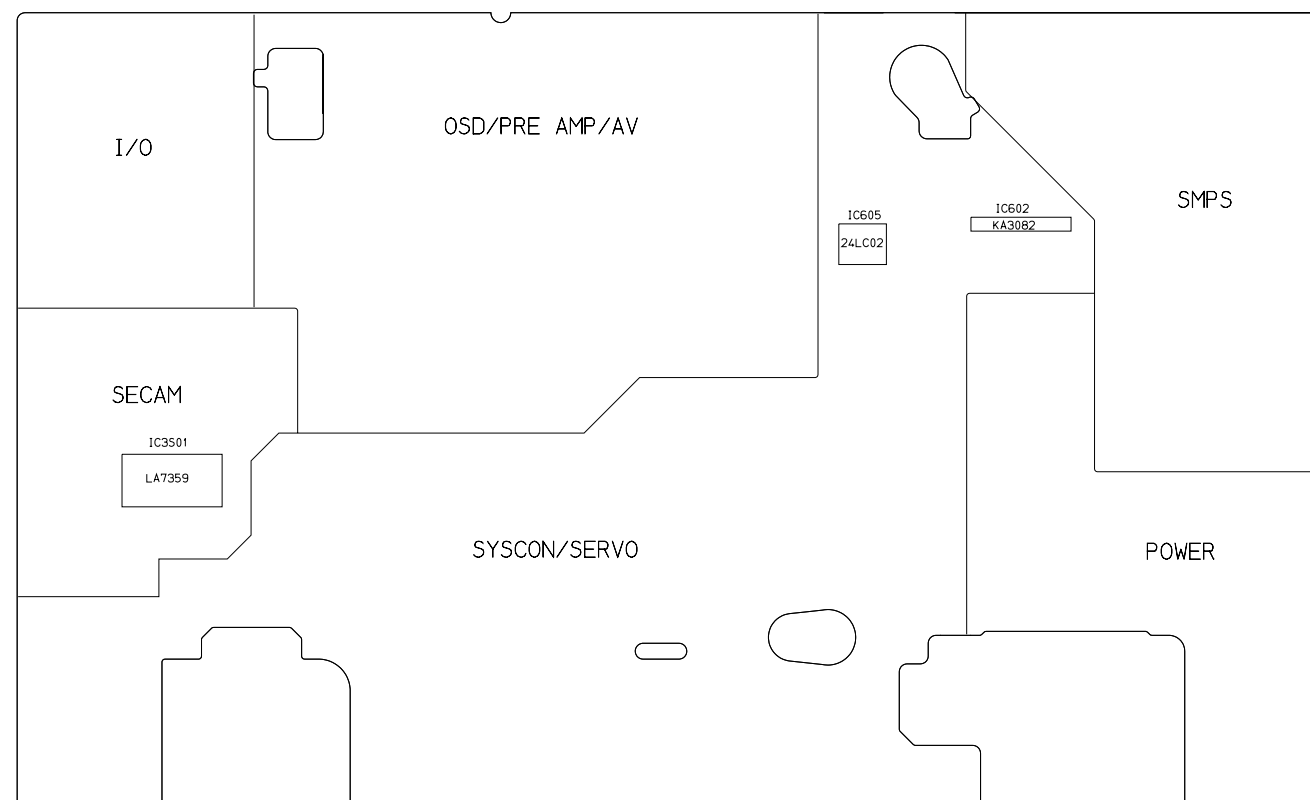
Note :

Do not use the part number shown on this drawing for ordering. The correct part number is shown in the parts list (may be slightly different or amended since this drawing was prepared).

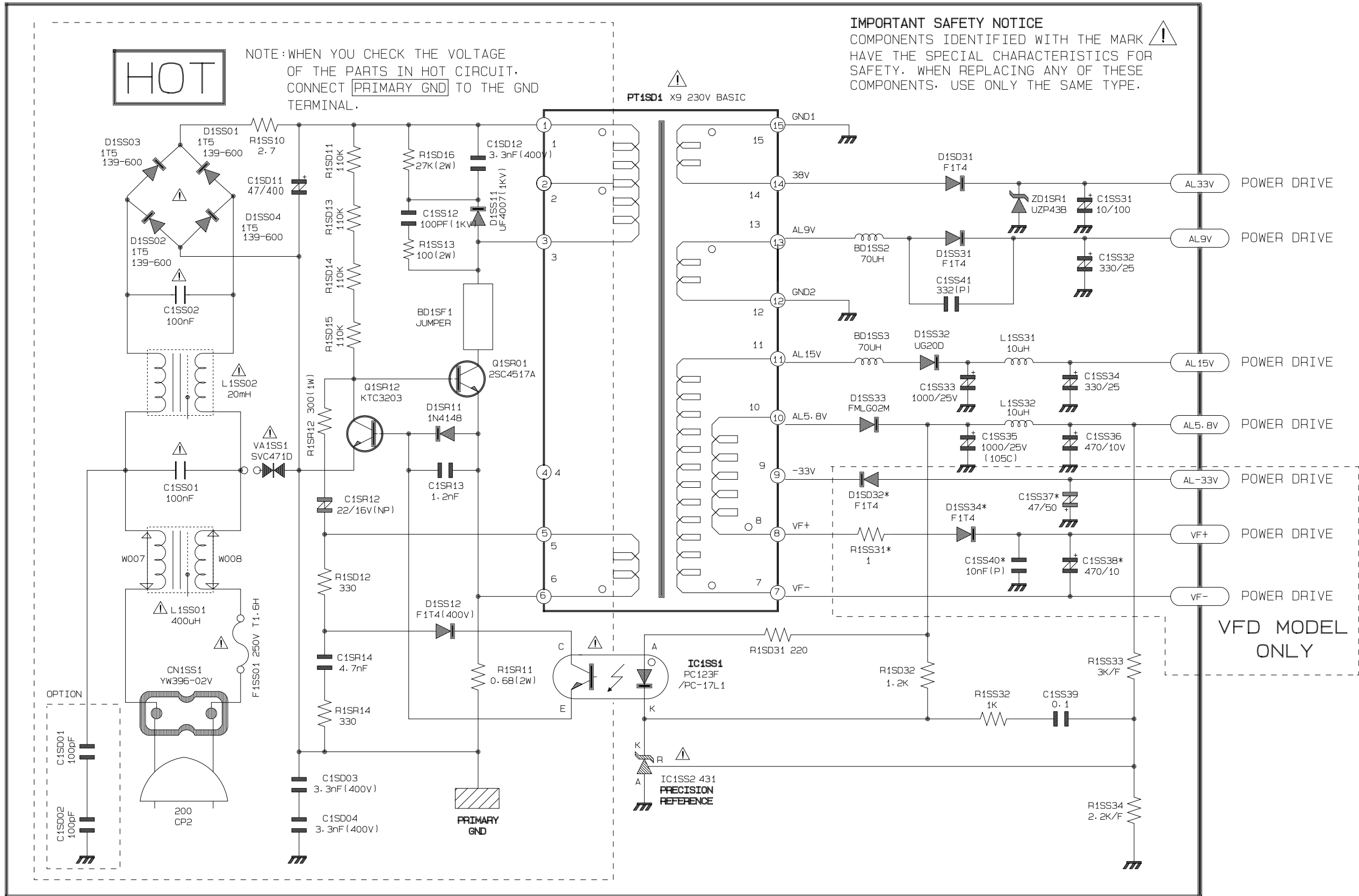
Important safety notices :

Components identified with the mark ⚠ have the special characteristics for safety. When replacing any of these components. Use only the same type.

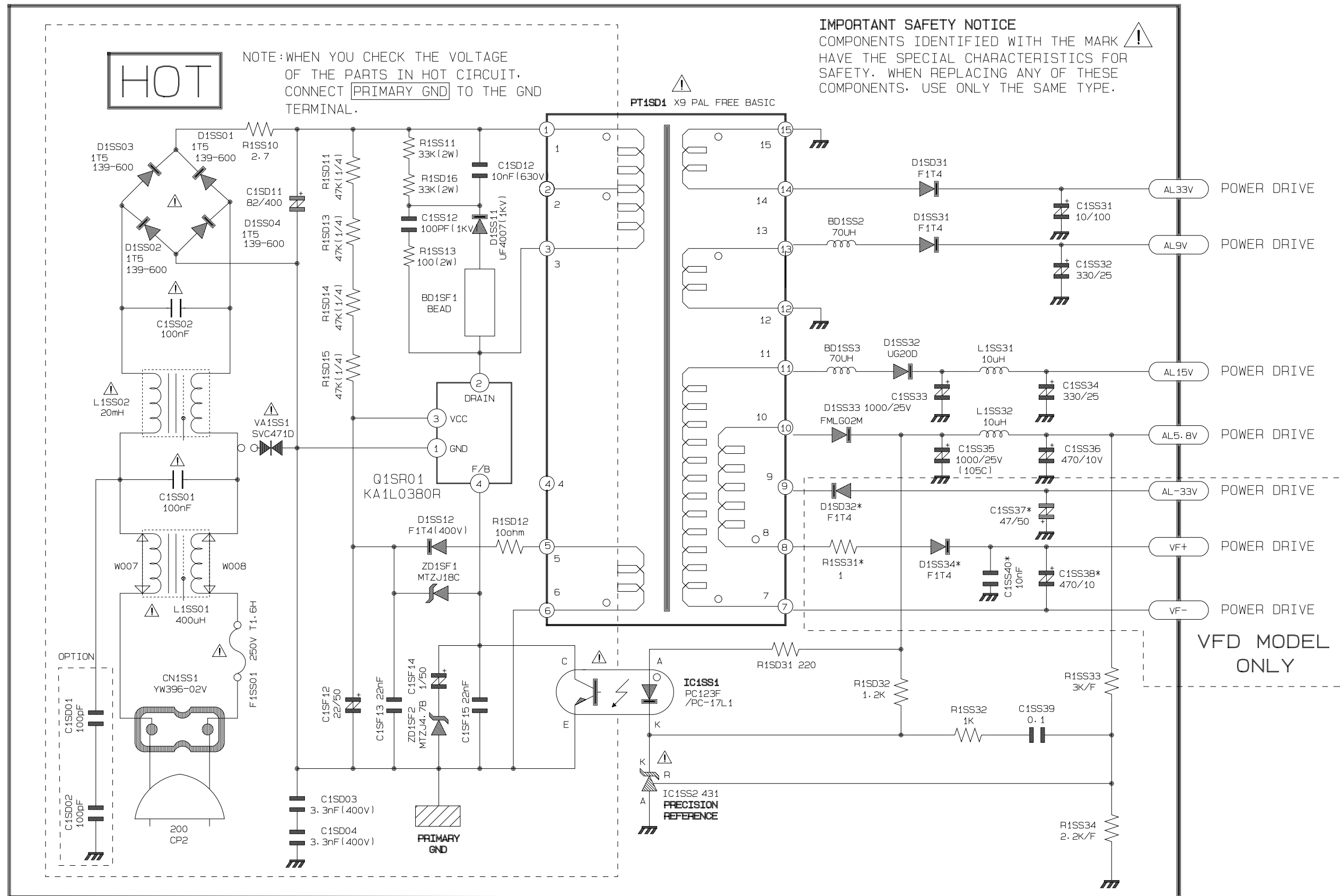
◆ **Block Identification of Main PCB**



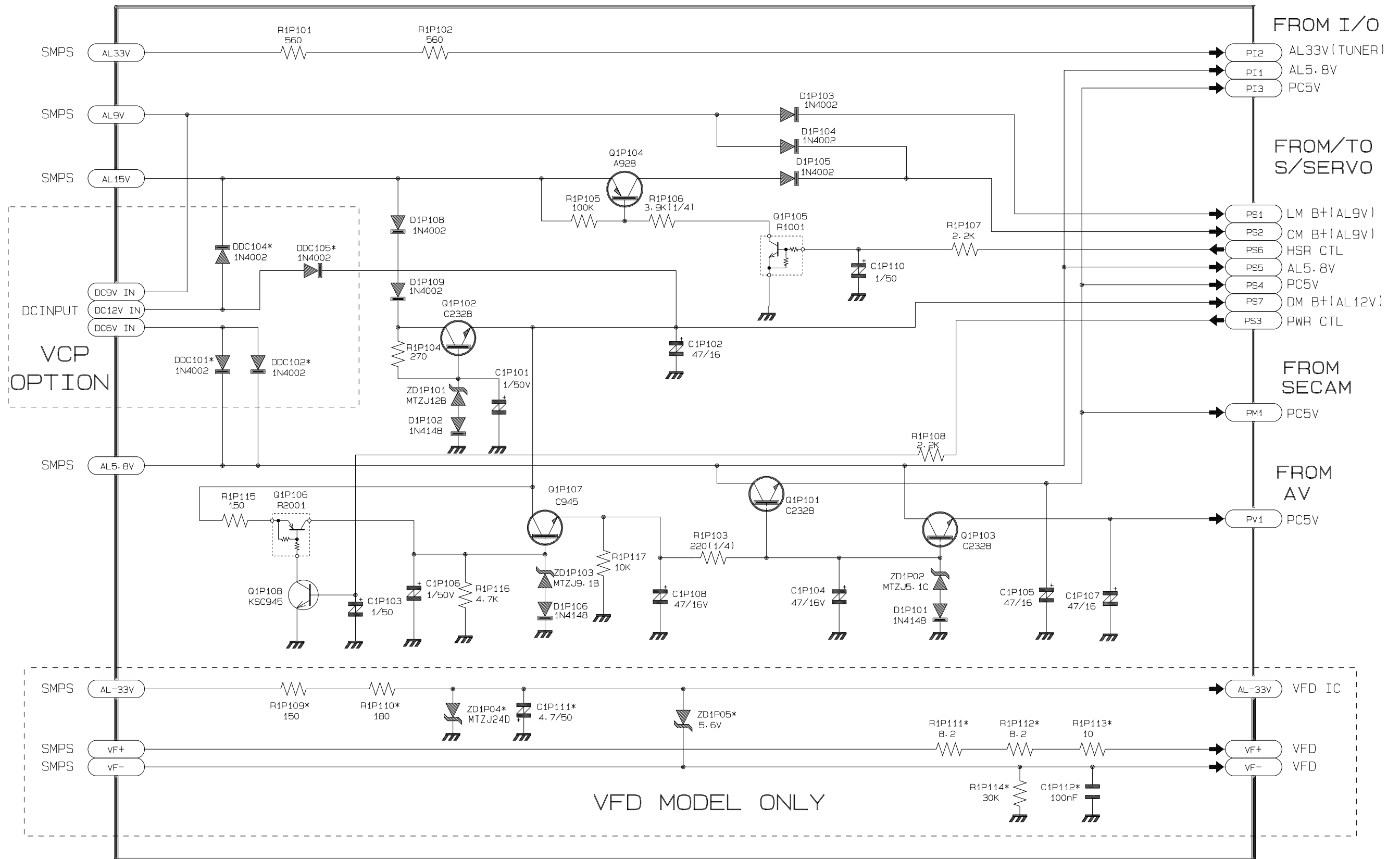
5-1 S.M.P.S. (230 Voltage)



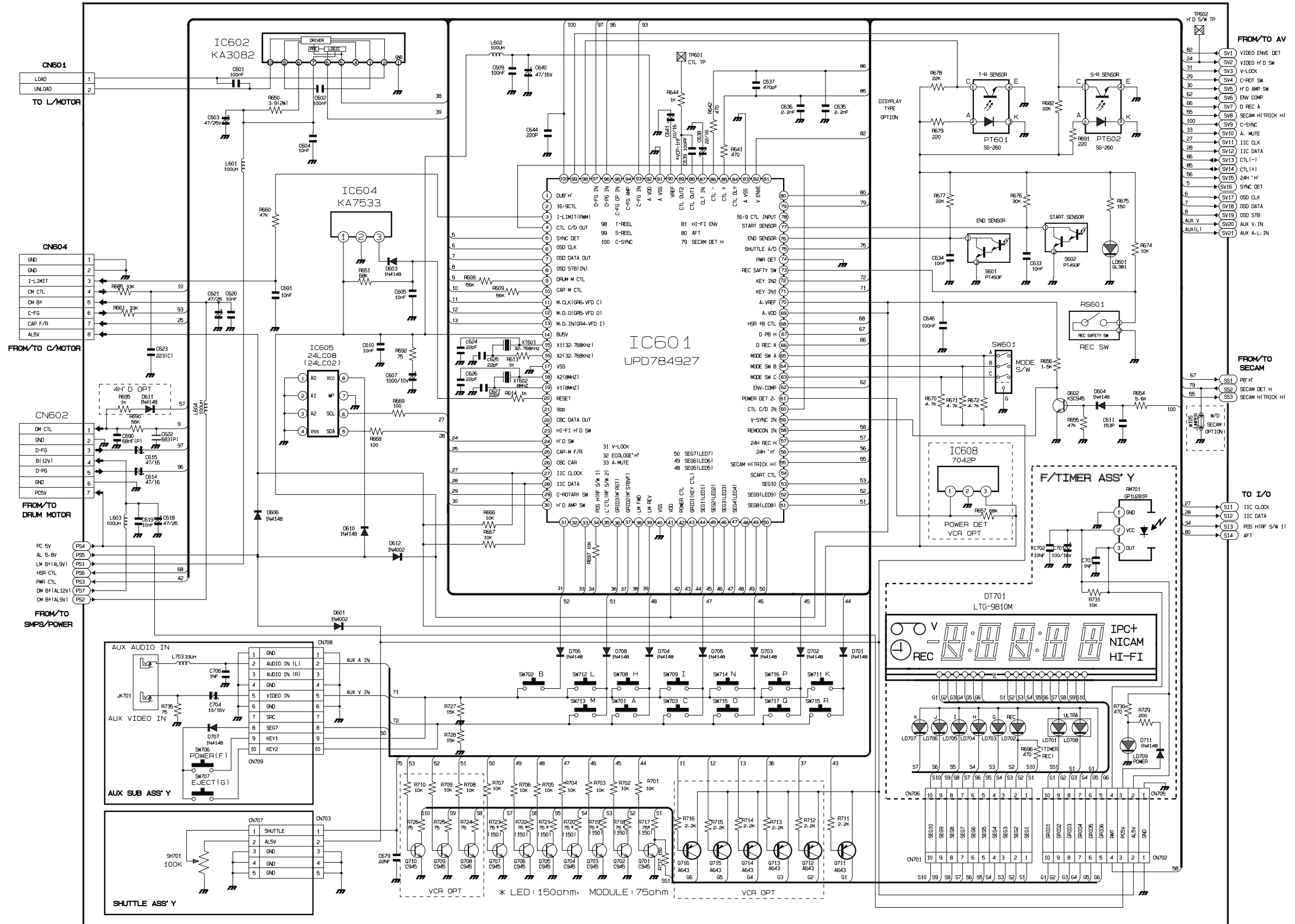
5-2 S.M.P.S. (Free Voltage)



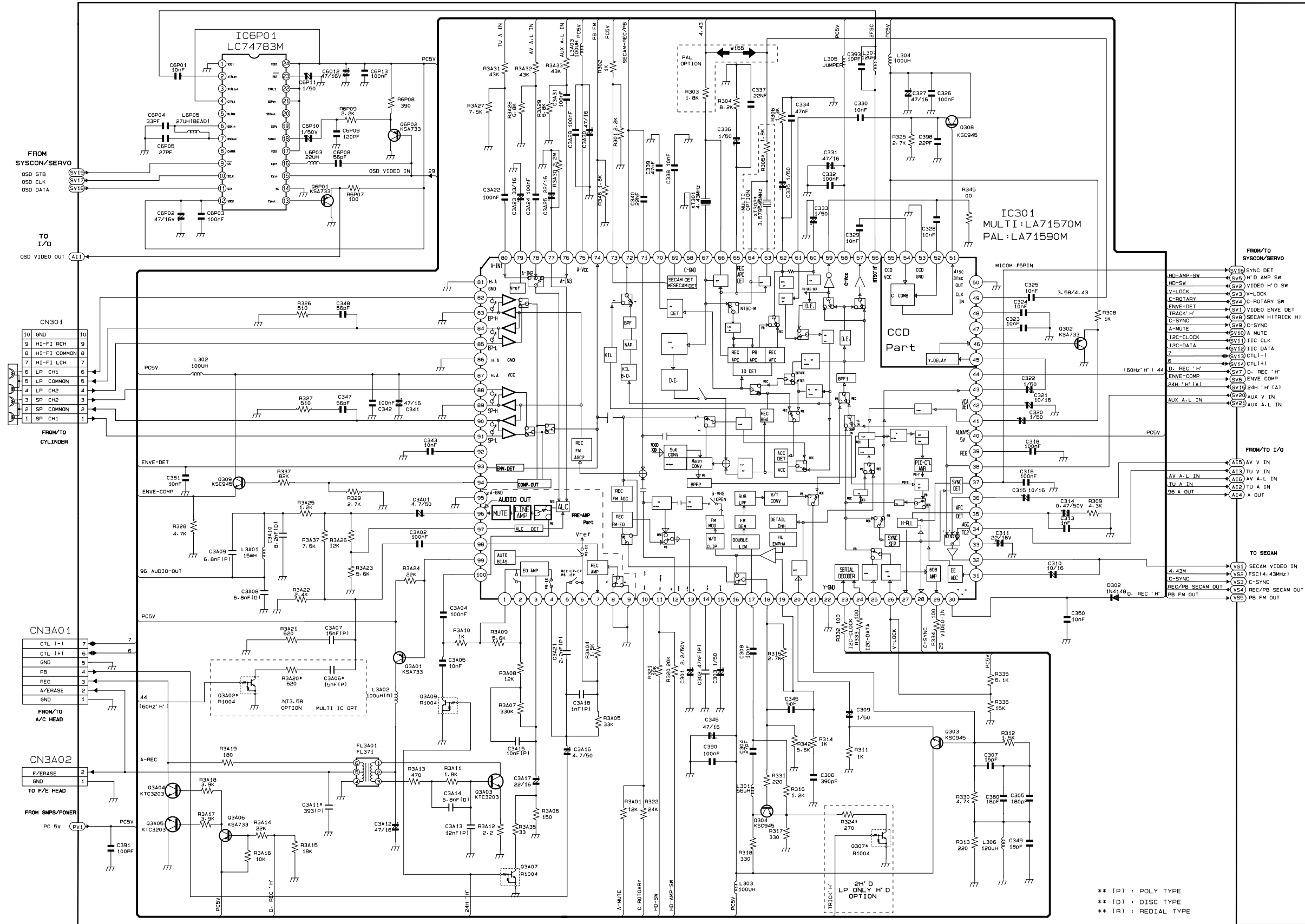
5-3 Power Drive



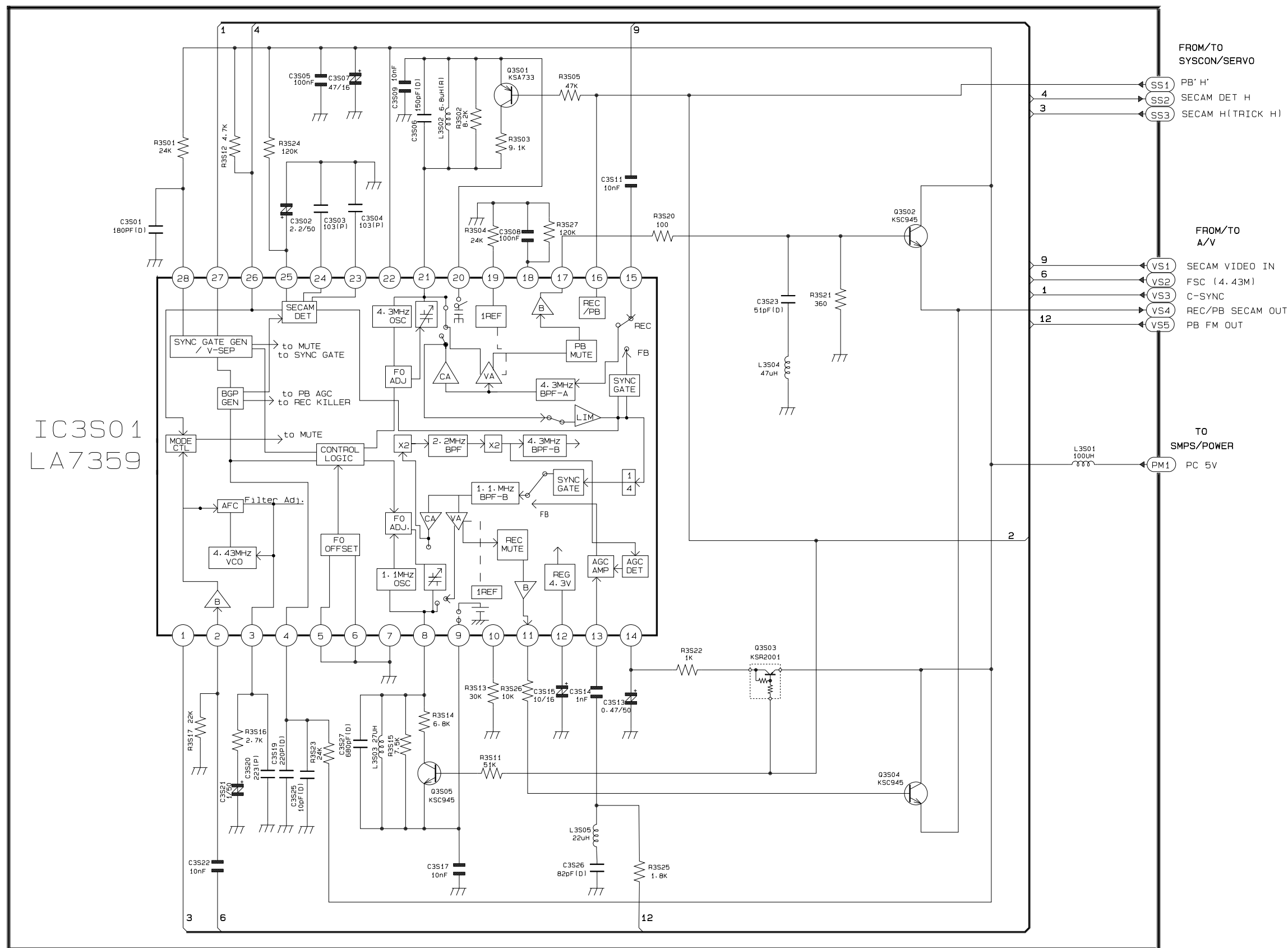
5-4 System Control/Servo



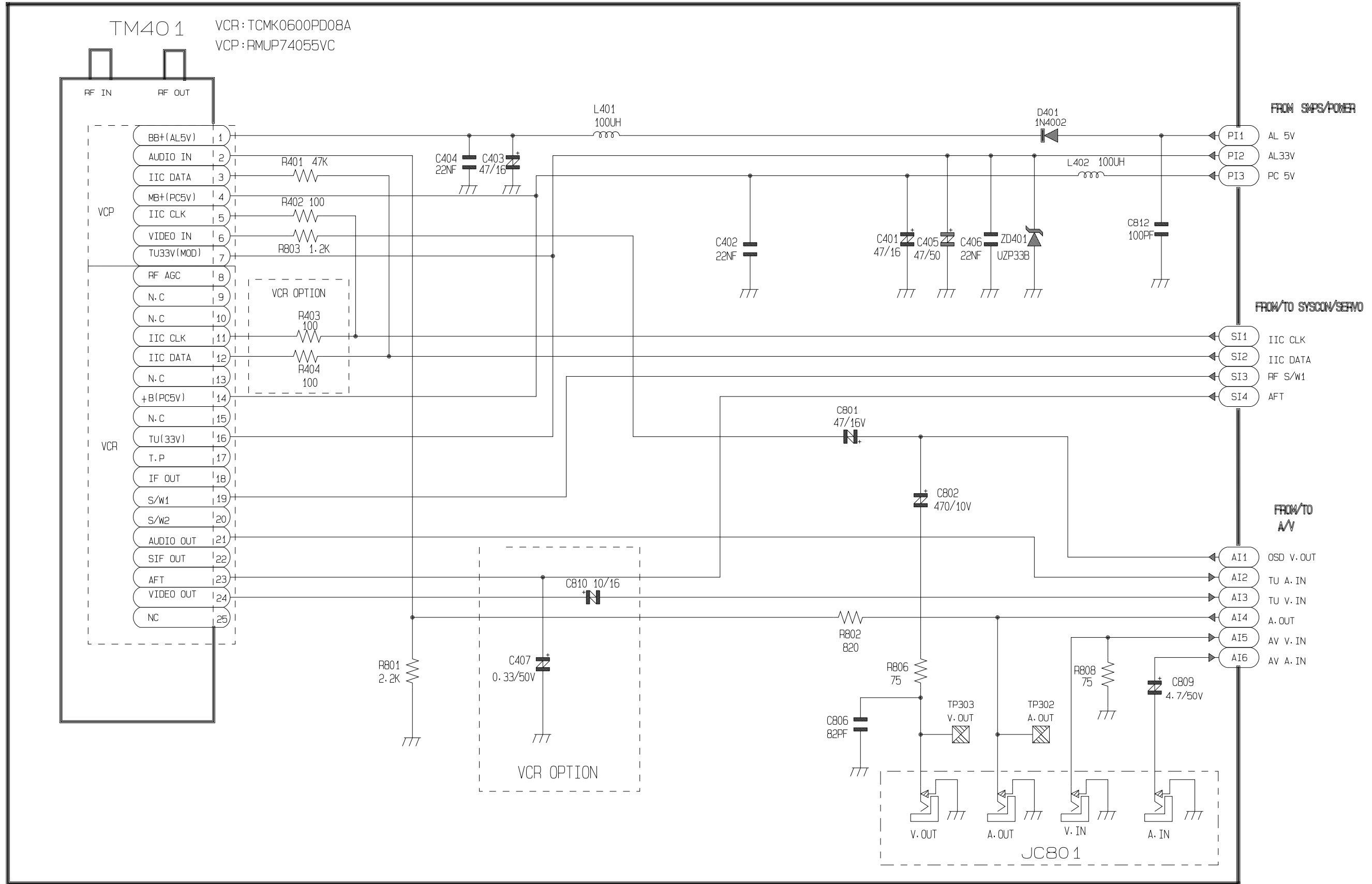
5-5 Audio/Video



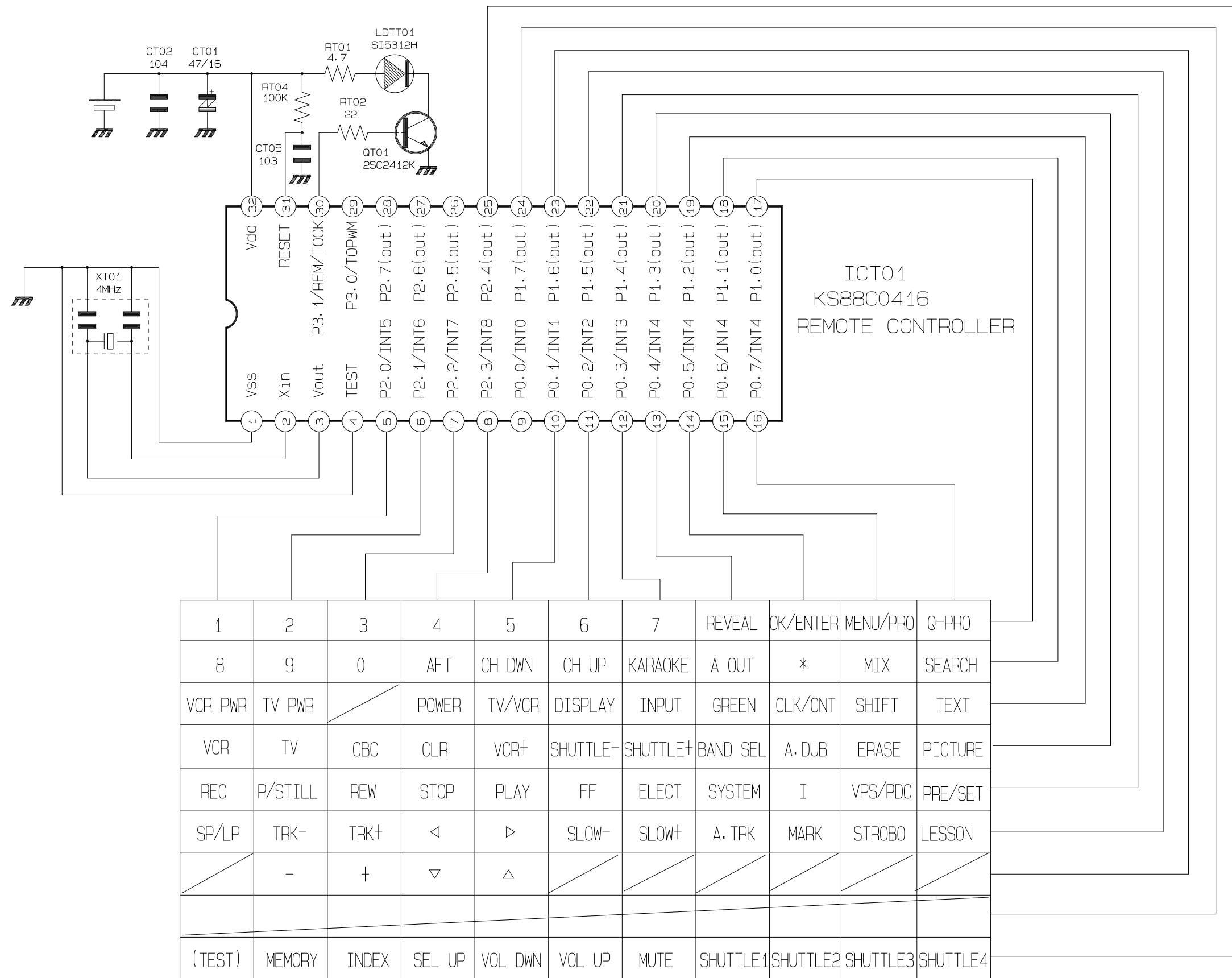
5-6 Secam



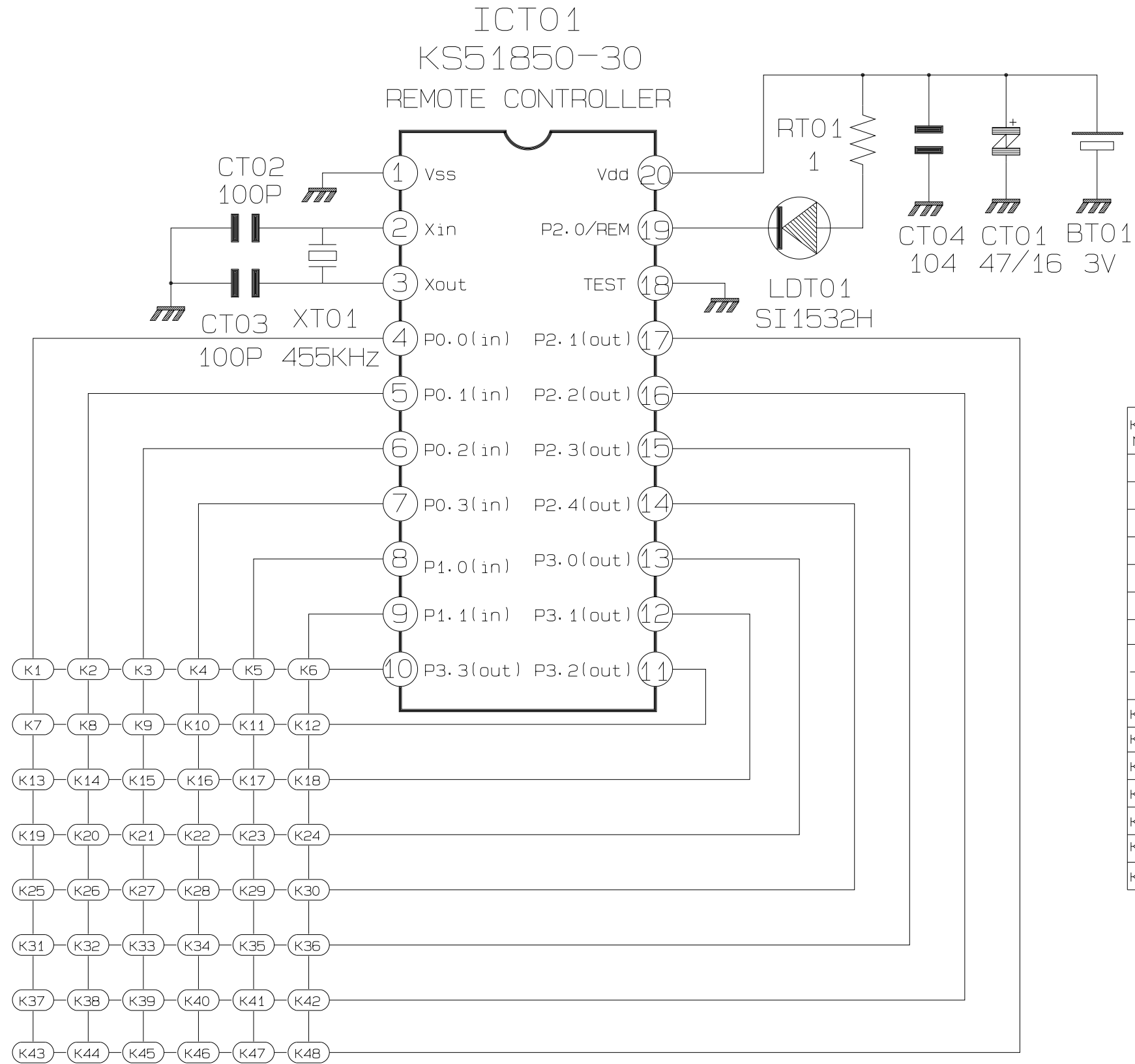
5-7 Input-Output



5-8 Remote-Control (Multi-TV)



5-9 Remote-Control (VCR Only)



KEY NO.	KEY NAME	KEY NO.	KEY NAME	KEY NO.	KEY NAME
K1	VTR/TV	K17	STOP	K33	INDEX
K2	POWER	K18	P/S	K34	TRK+
K3	1	K19	SLOW DOWN	K35	TRK-
K4	2	K20	REW	K36	DUB
K5	3	K21	PLAY	K37	MARK
K6	4	K22	FF	K38	VCR+
K7	5	K23	CLEAR/RESET	K39	CLK/COUNT
K8	6	K24	DISPLAY	K40	SP/LP
K9	7	K25	MENU	K41	Q-PROGRAM
K10	8	K26	EJECT	K42	OK·ENTER
K11	9	K27	ATR	K43	SYSTEM
K12	CH DOWN	K28	OUTPUT SEL	K44	MODE/KARAOKE
K13	0	K29	INPUT SEL	K45	AFT
K14	CH UP	K30	MONITOR	K46	PICTURE
K15	SLOW UP	K31	ERASE	K47	SHUTTLE-
K16	REC/OTR	K32	TEST	K48	SHUTTLE+

MEMO