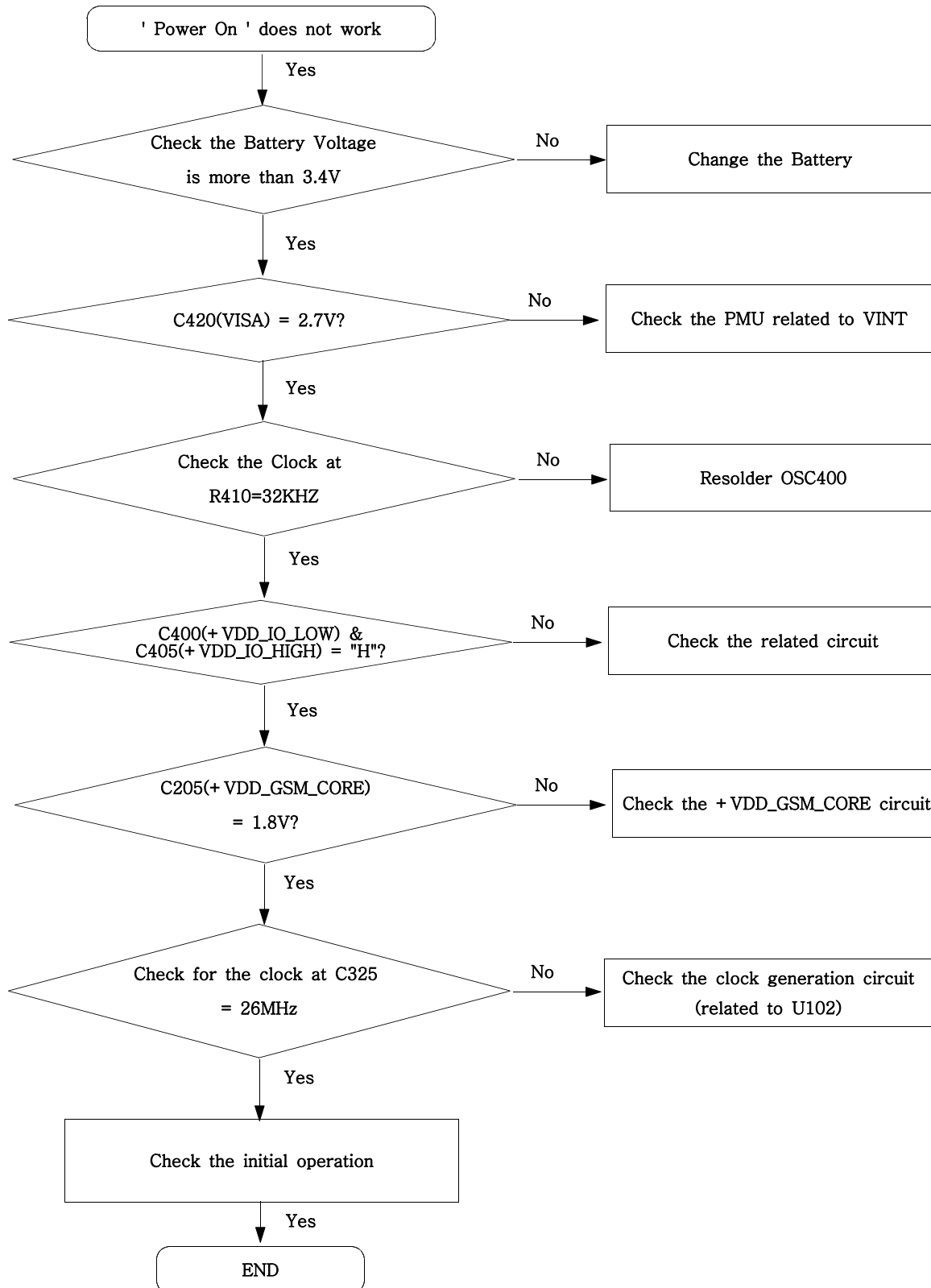
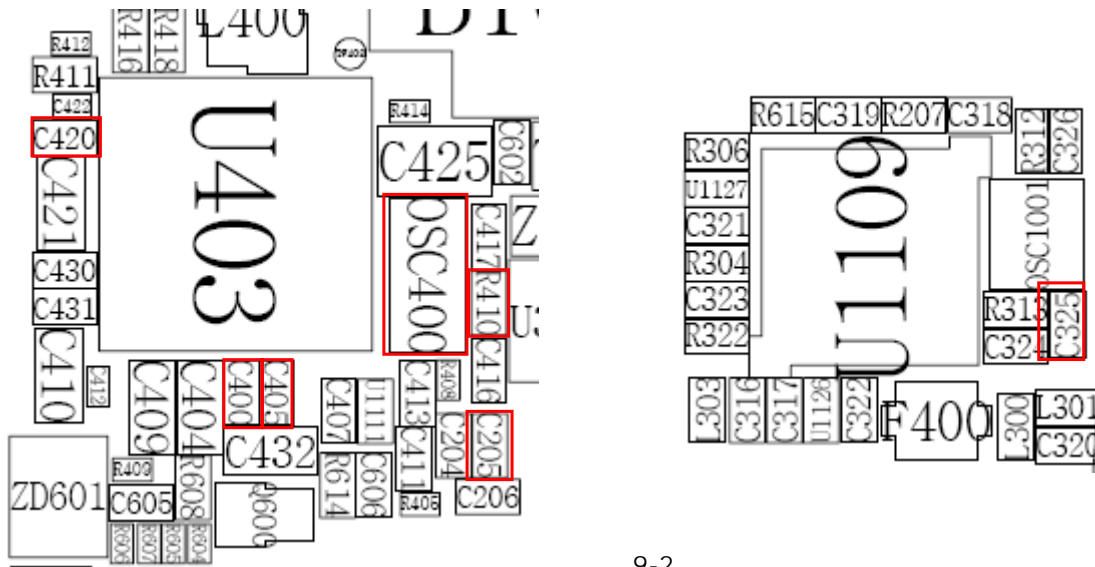
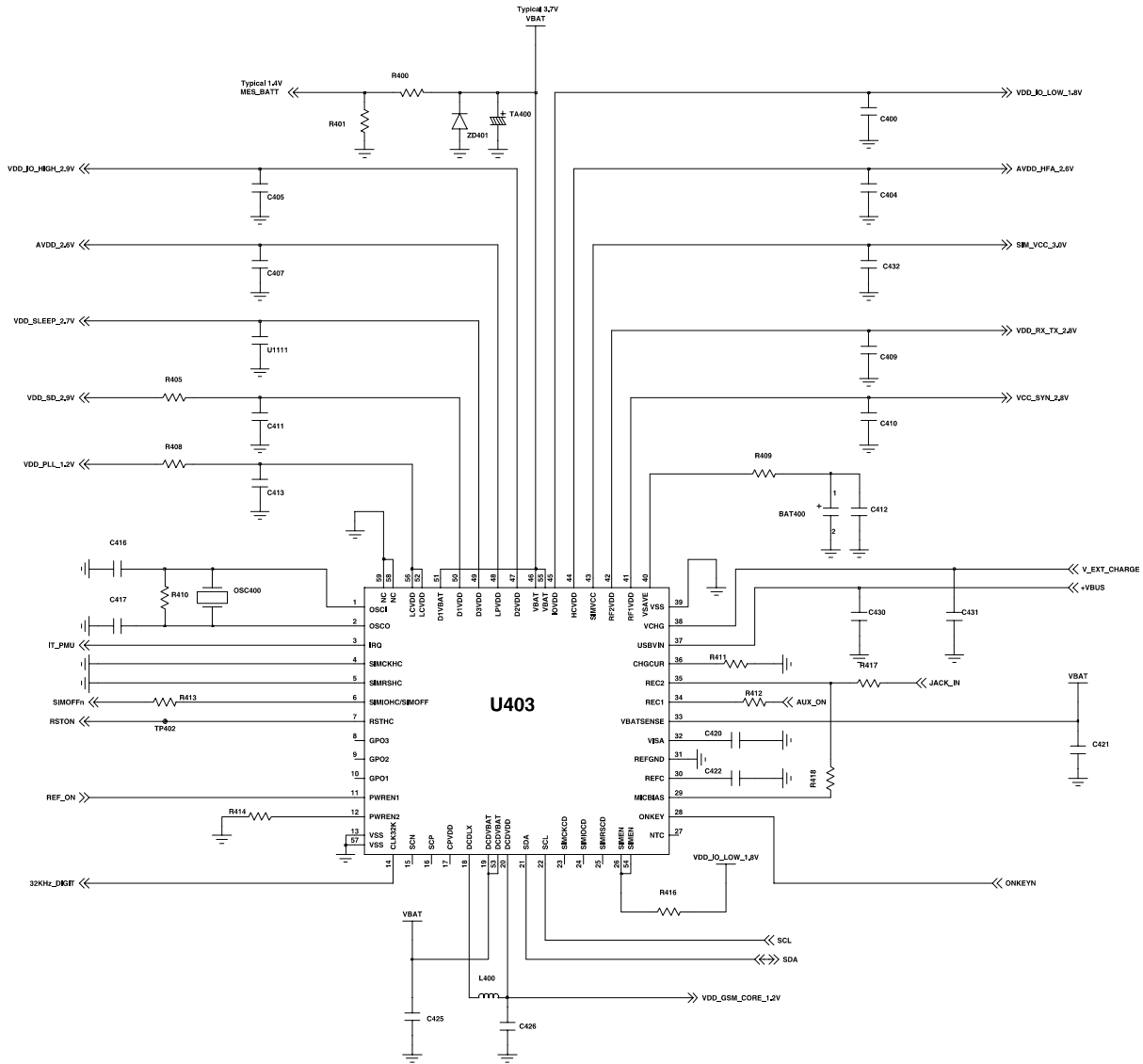


9. Flow Chart of Troubleshooting

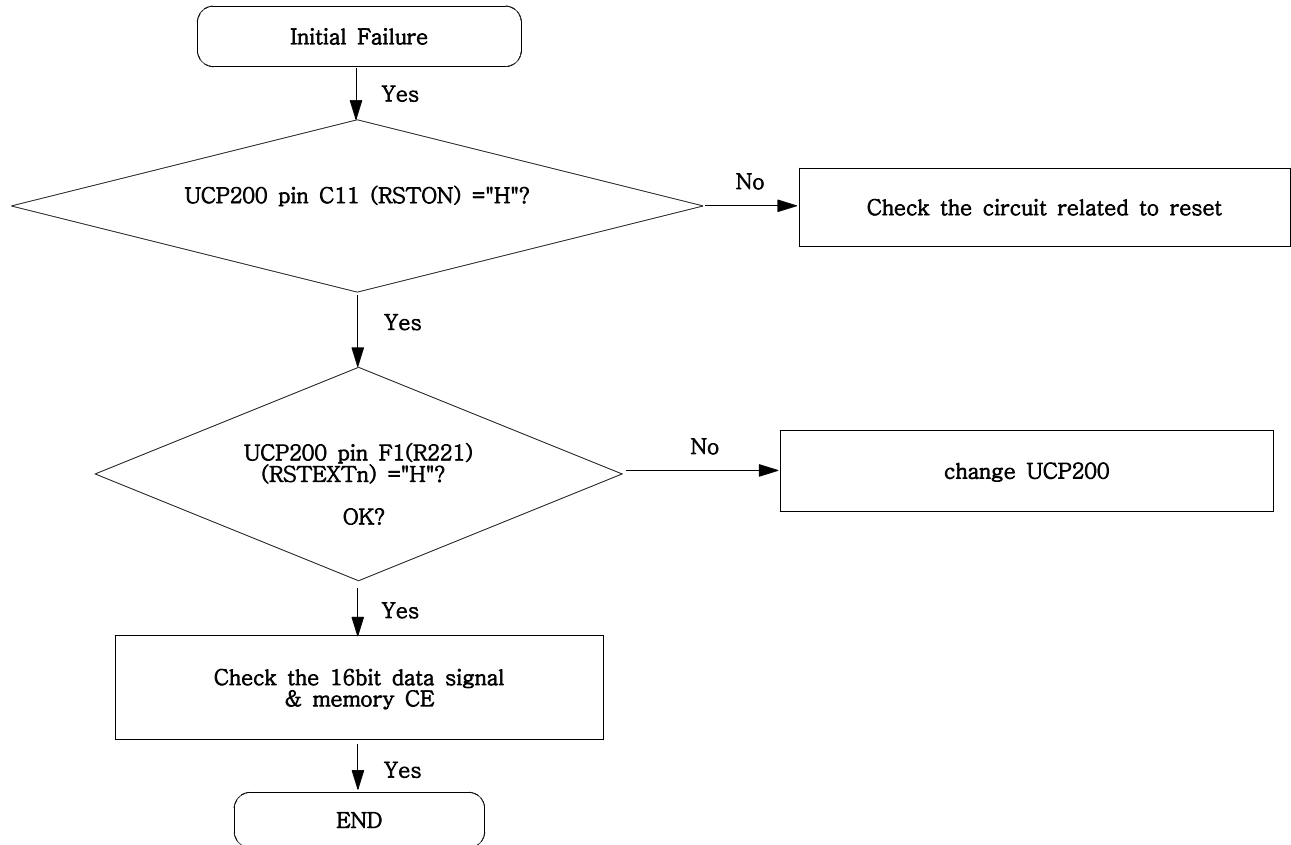
9-1. Power On



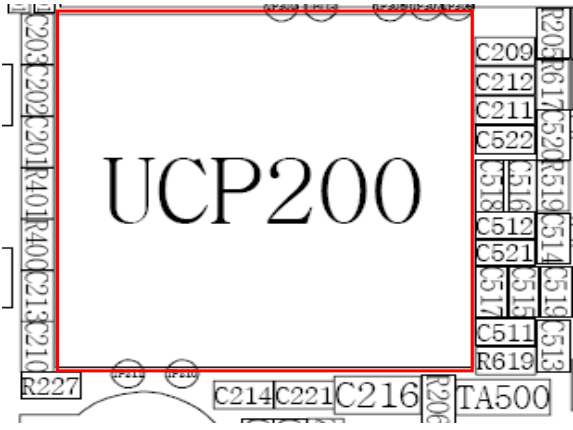
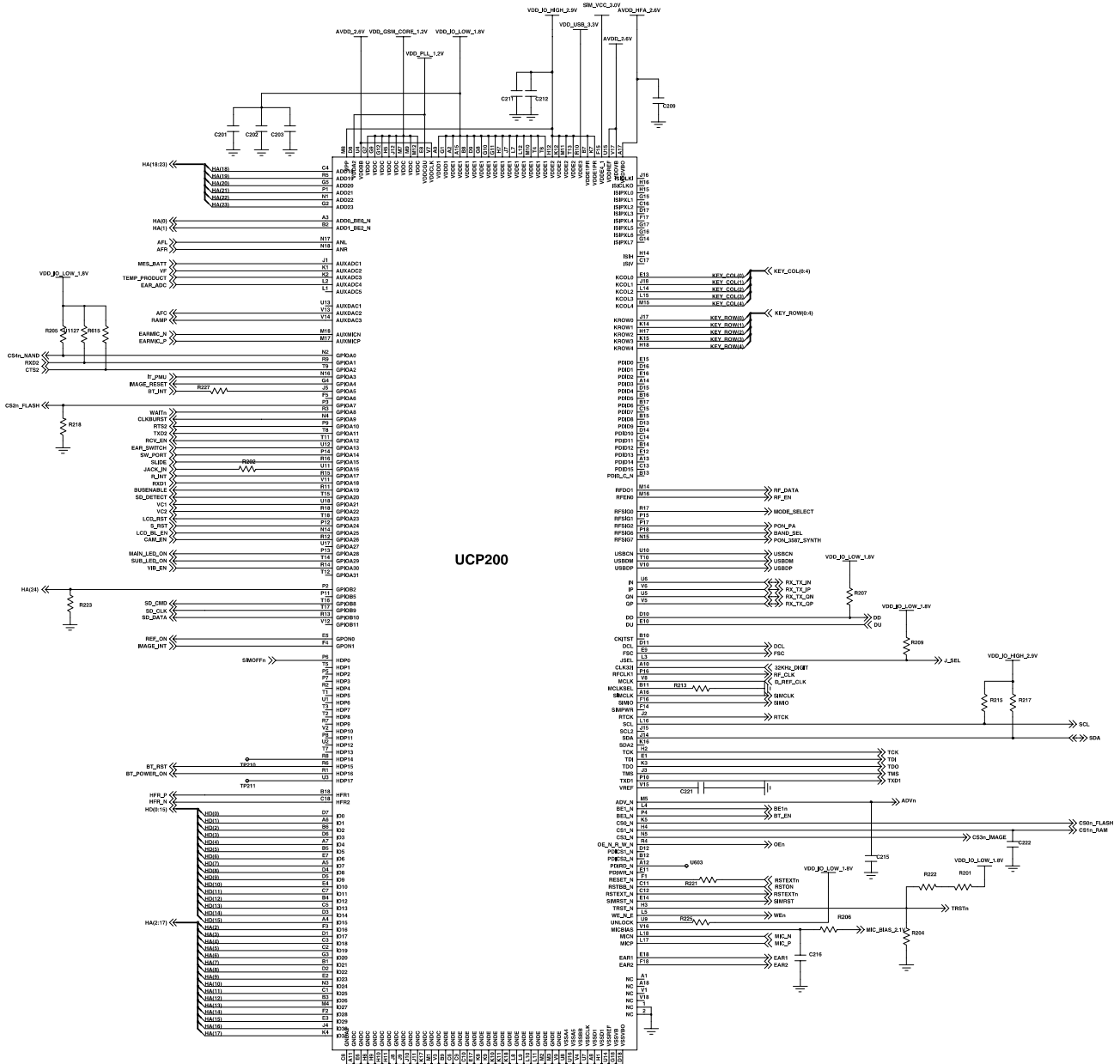
Flow Chart of Troubleshooting



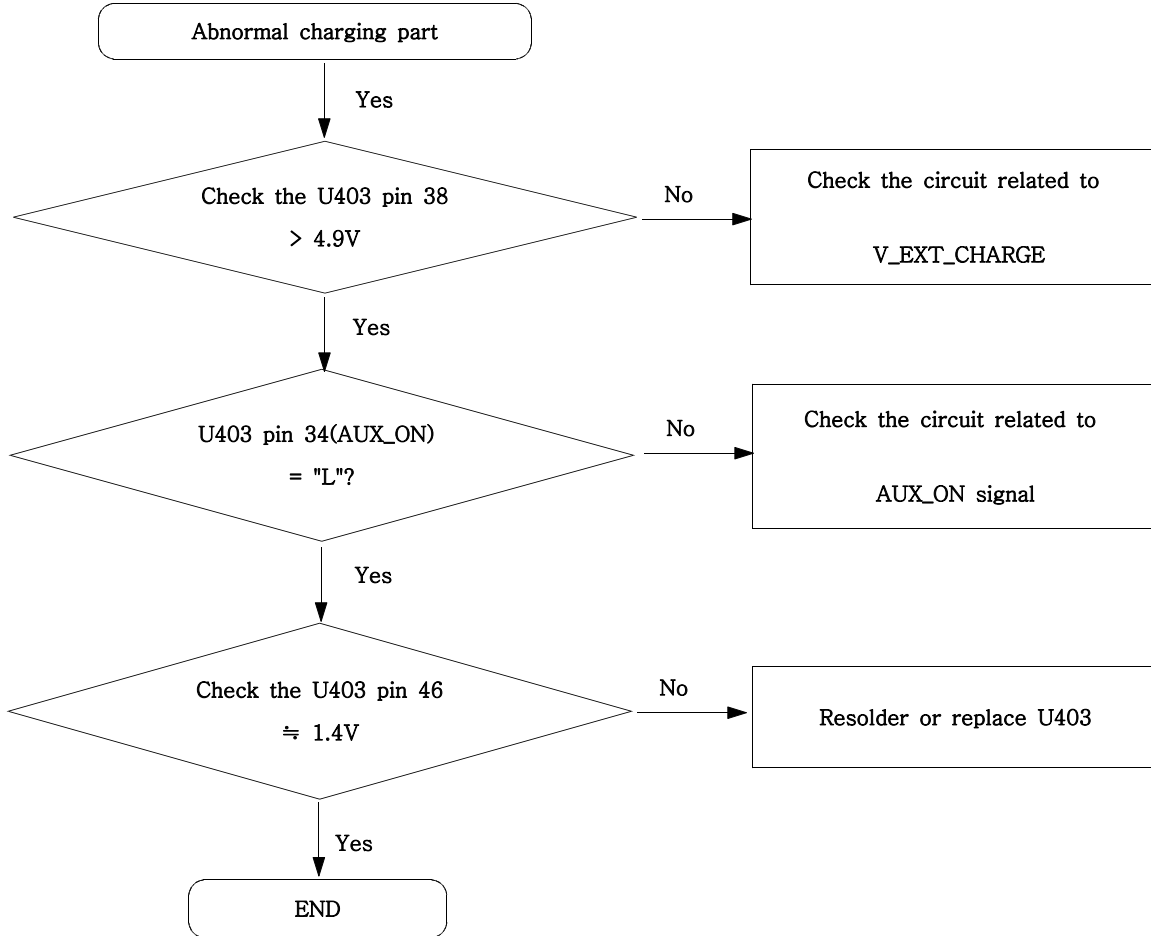
9-2. Initial



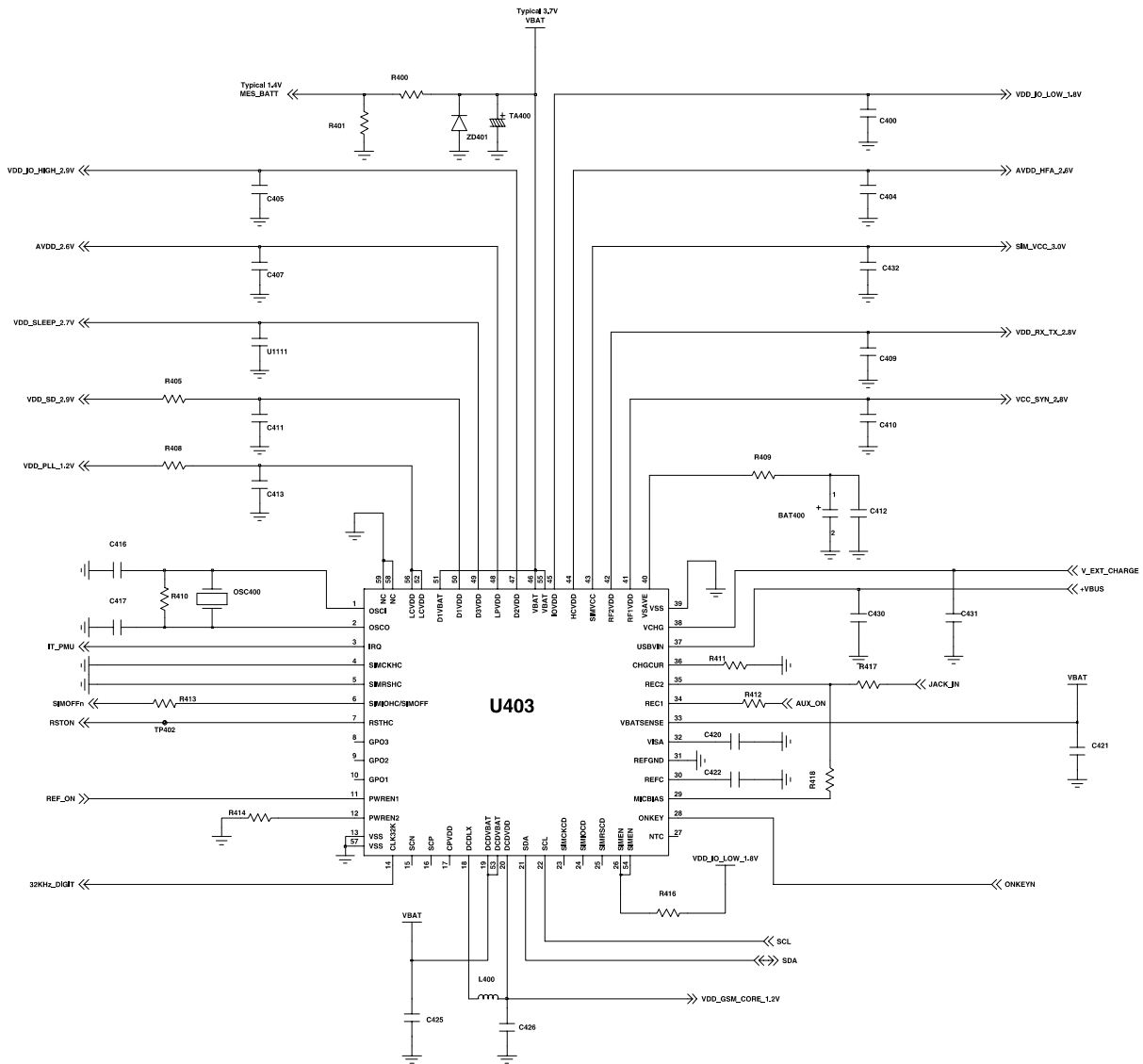
Flow Chart of Troubleshooting



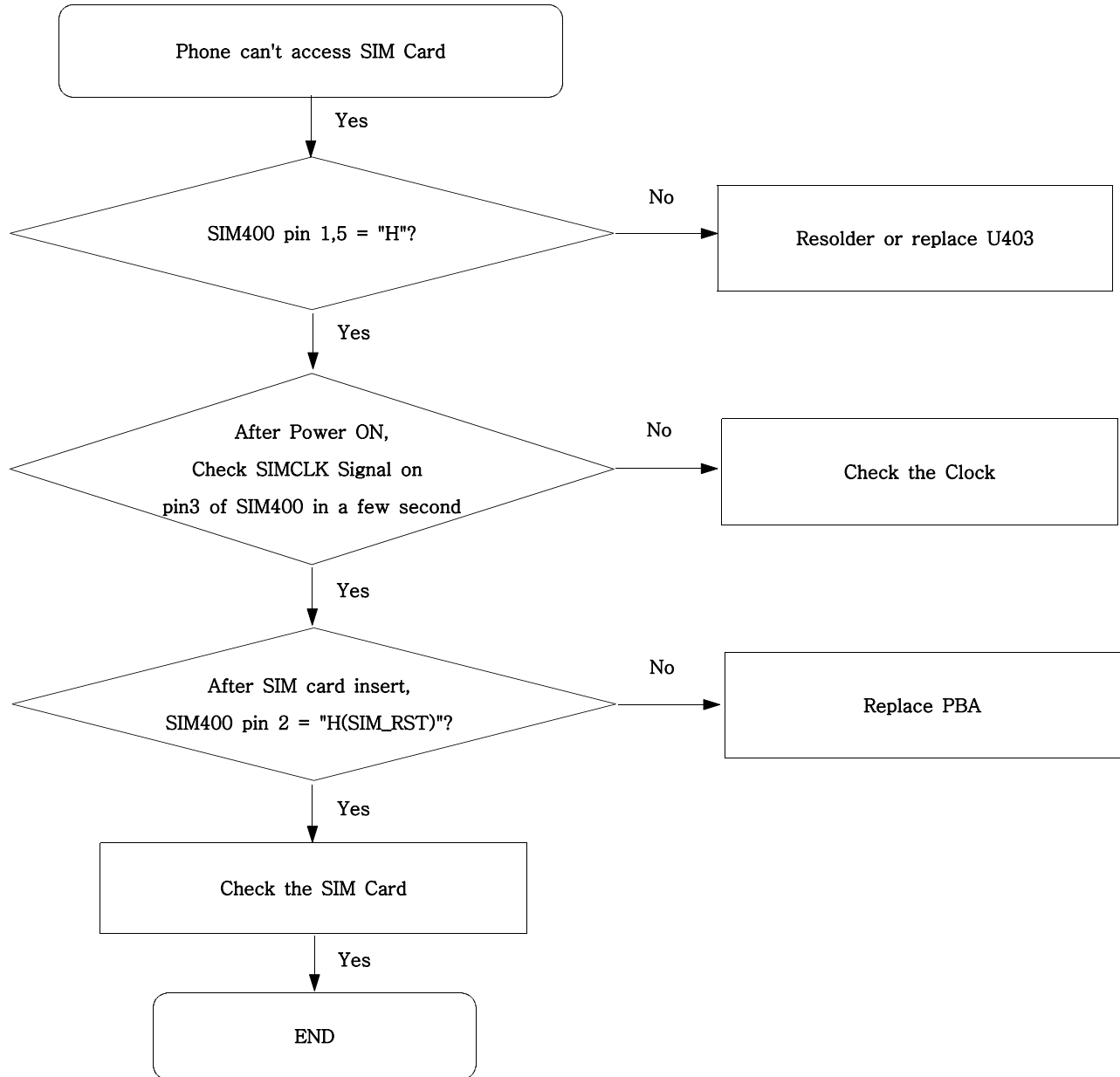
9-3. Charging Part

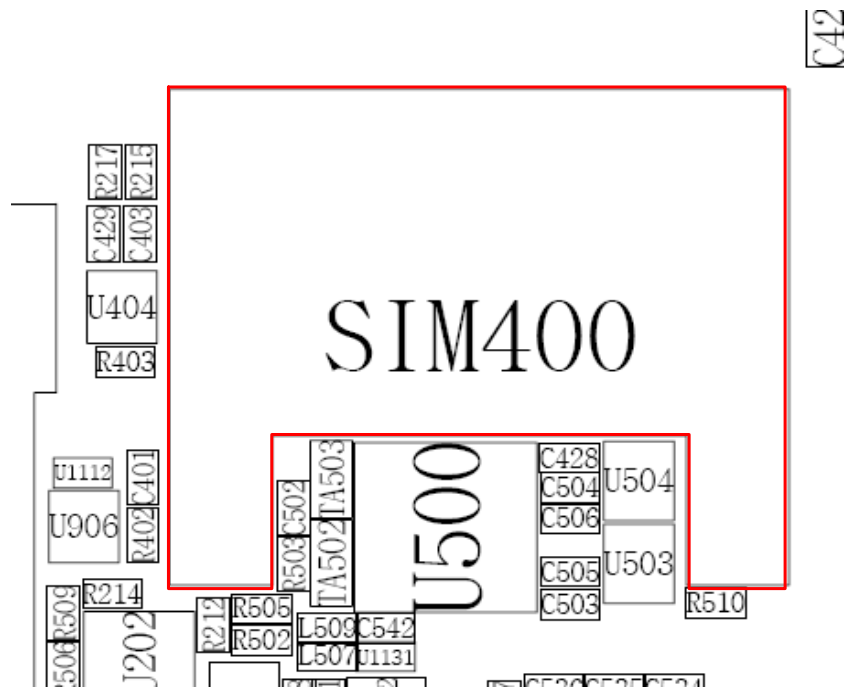
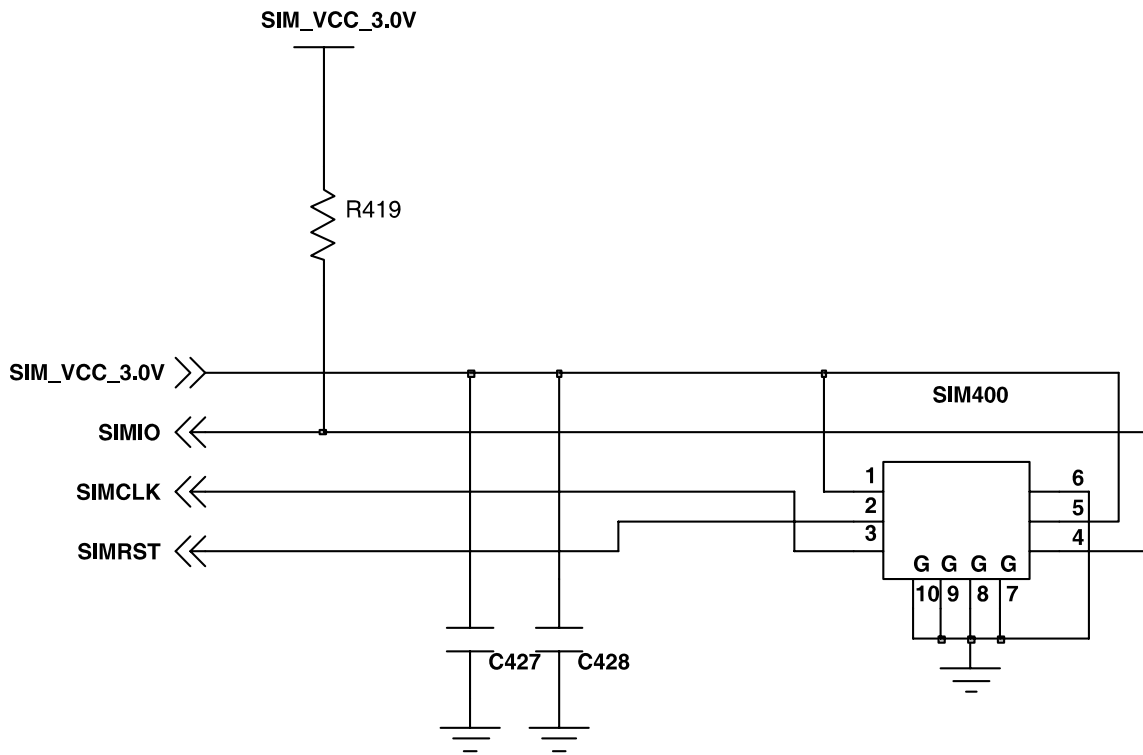


Flow Chart of Troubleshooting

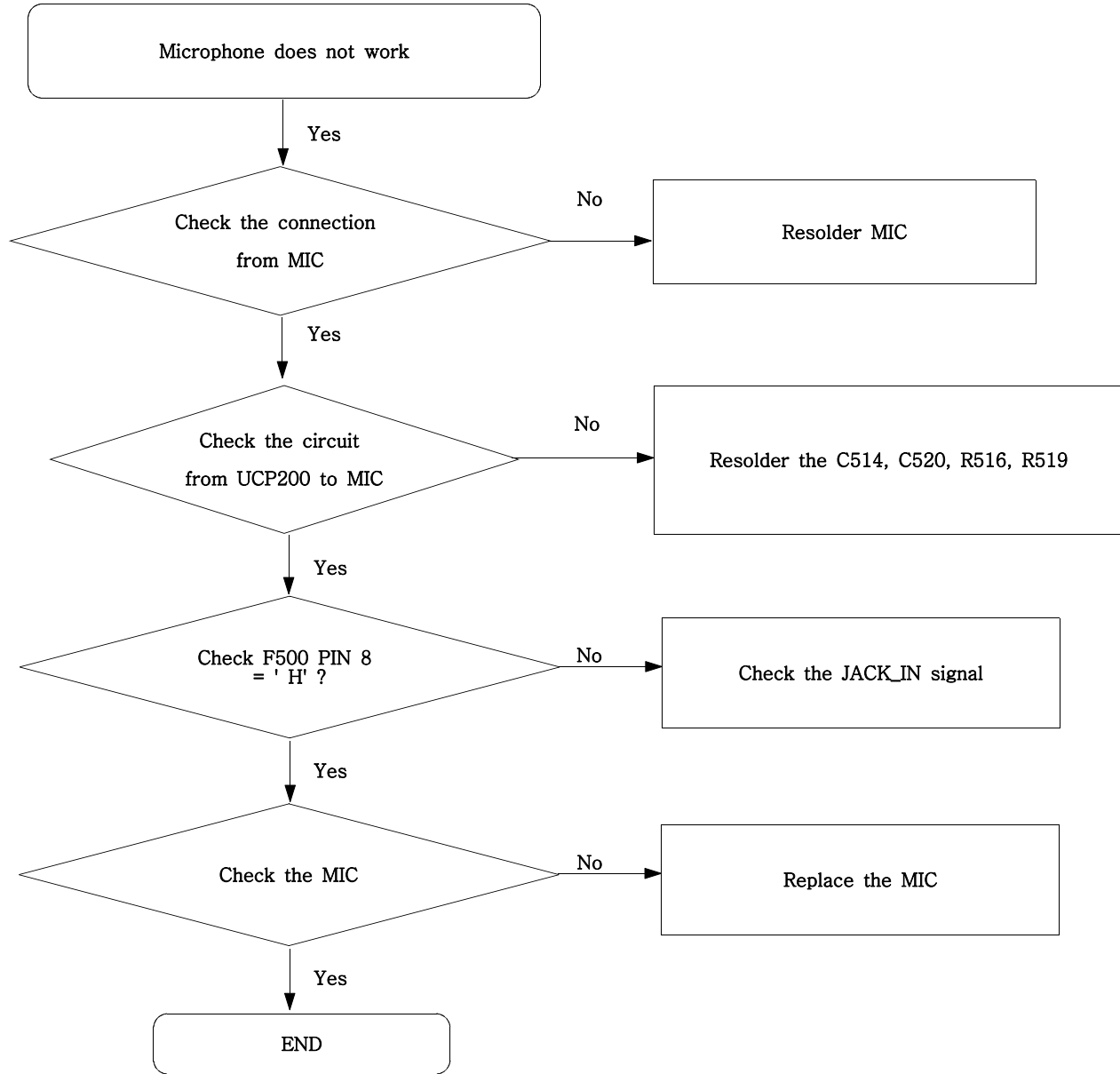


9-4. Sim Part

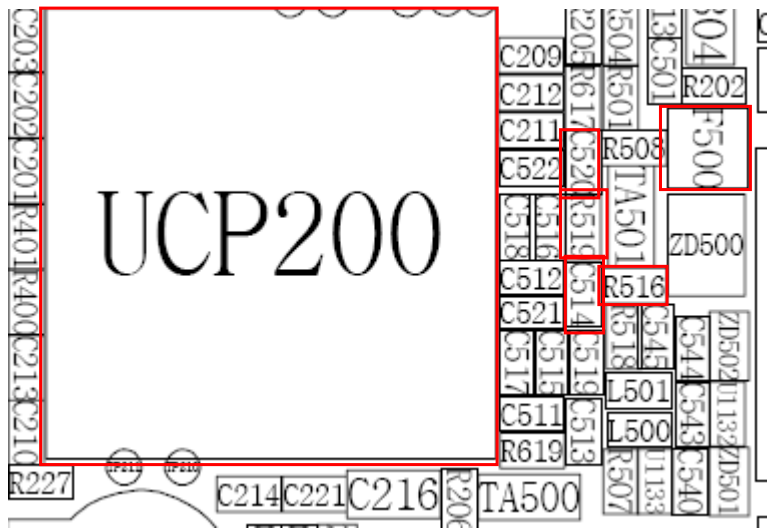
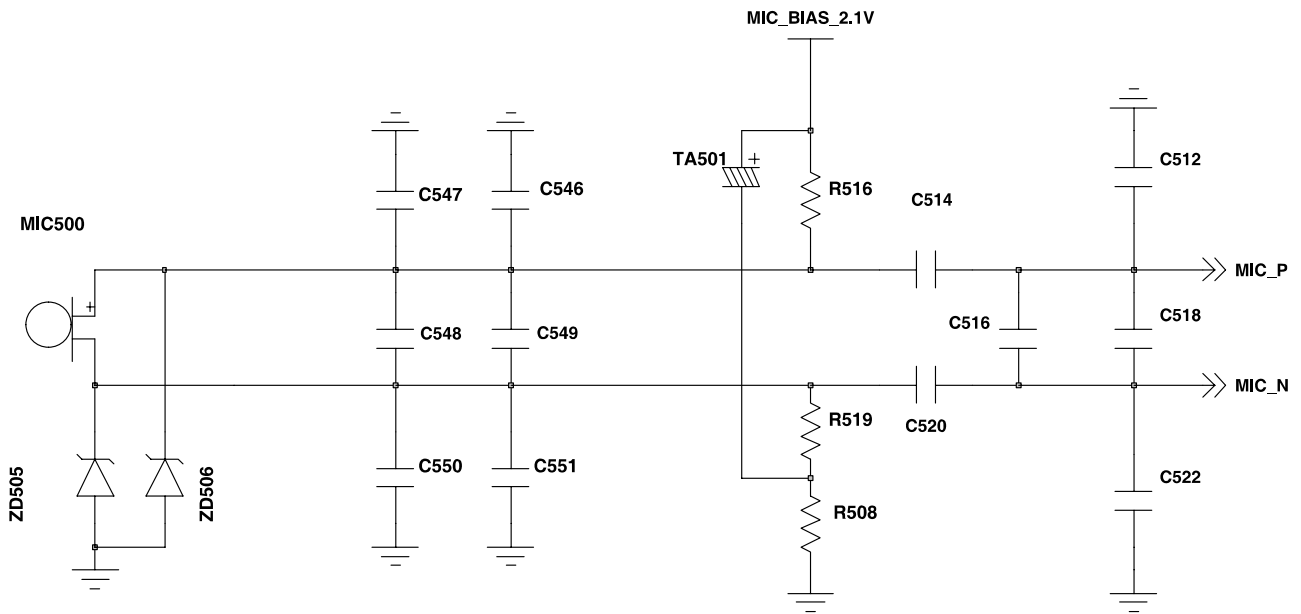




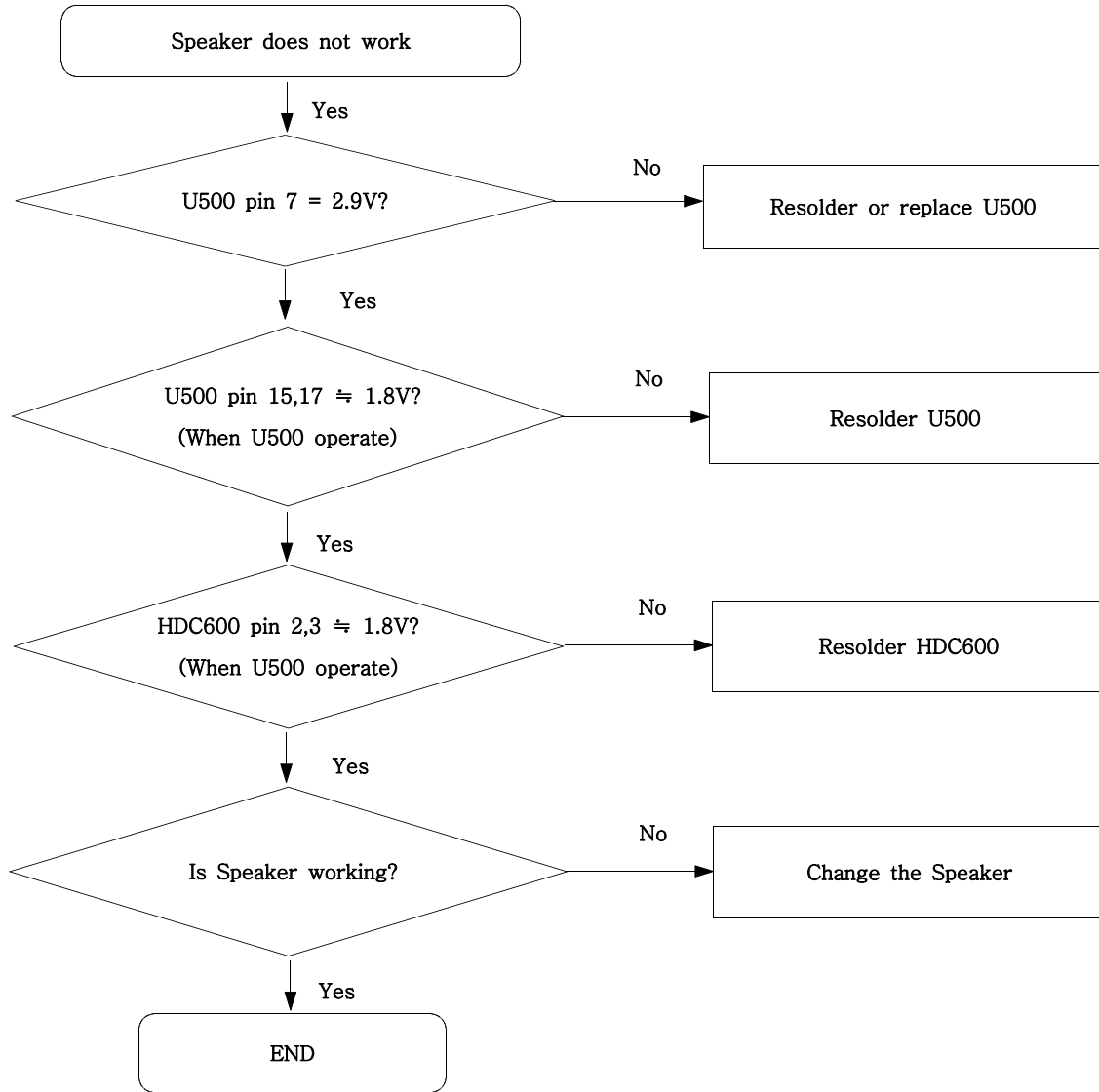
9-5. Microphone Part

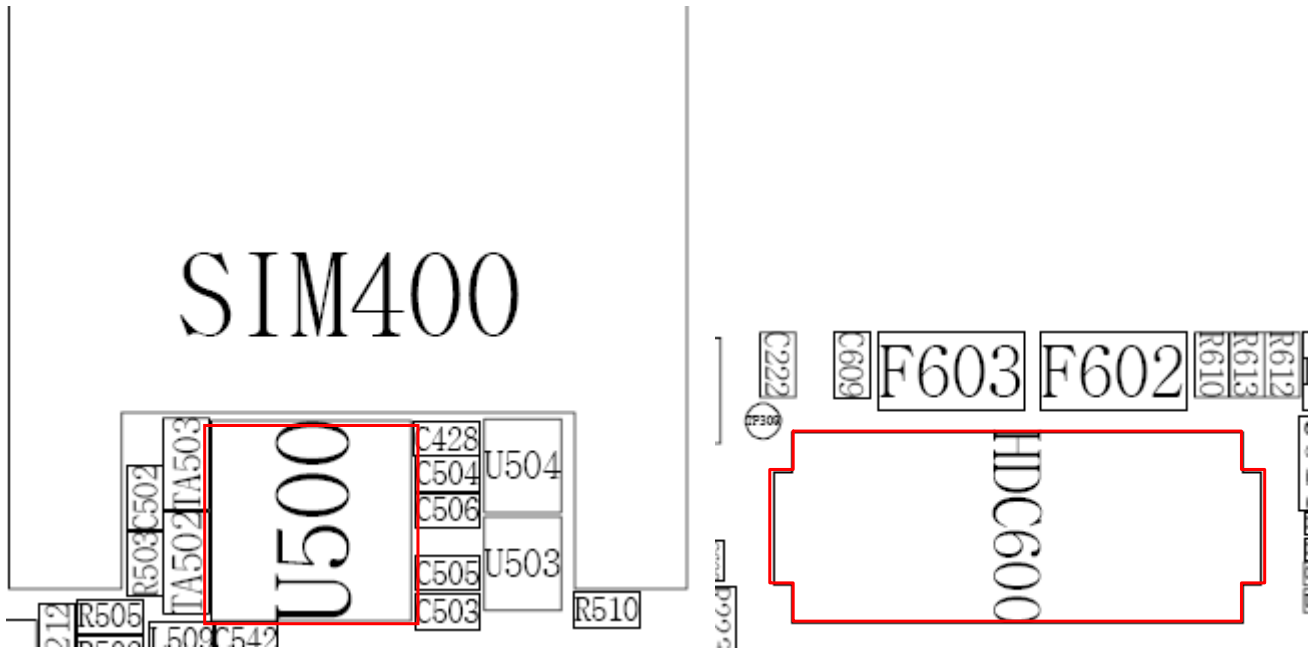
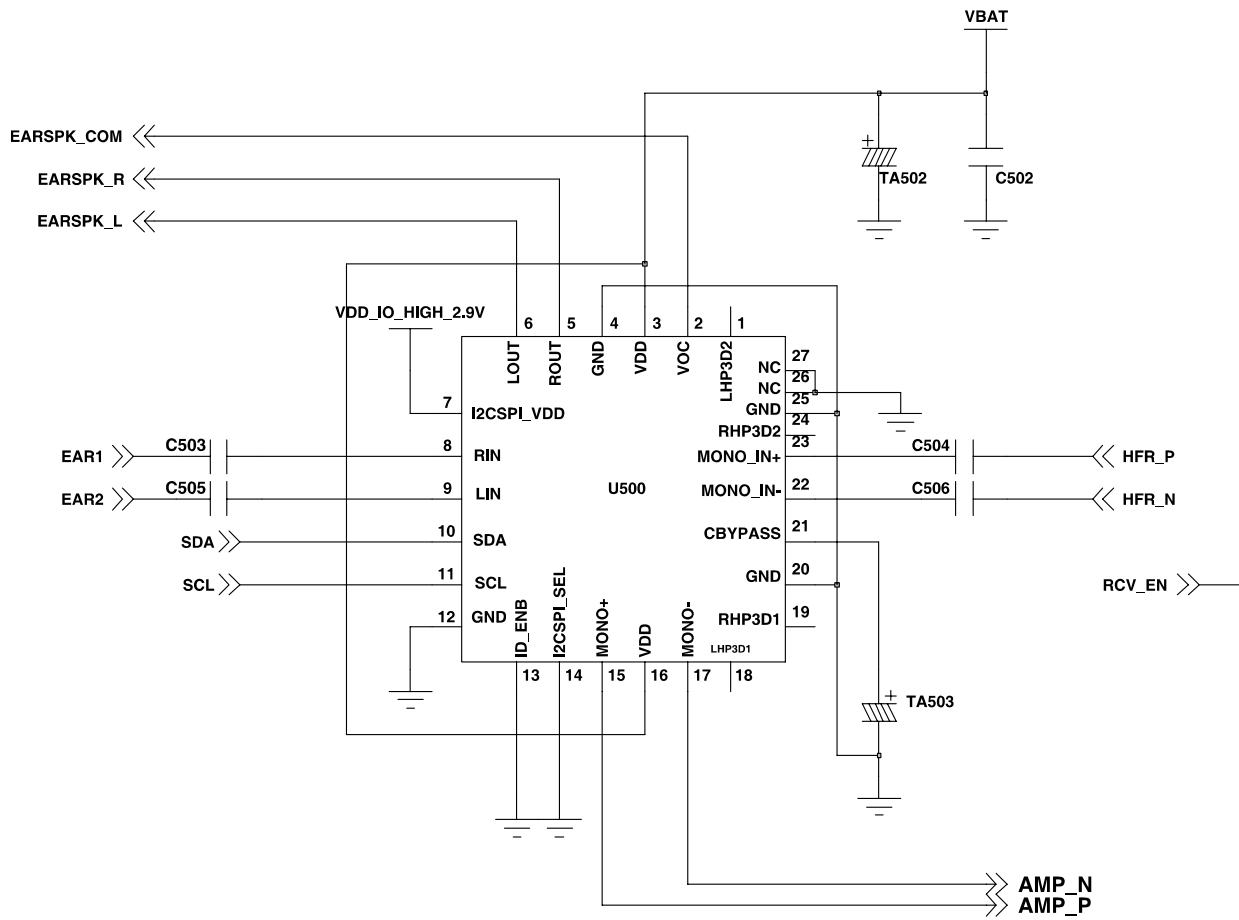


Flow Chart of Troubleshooting

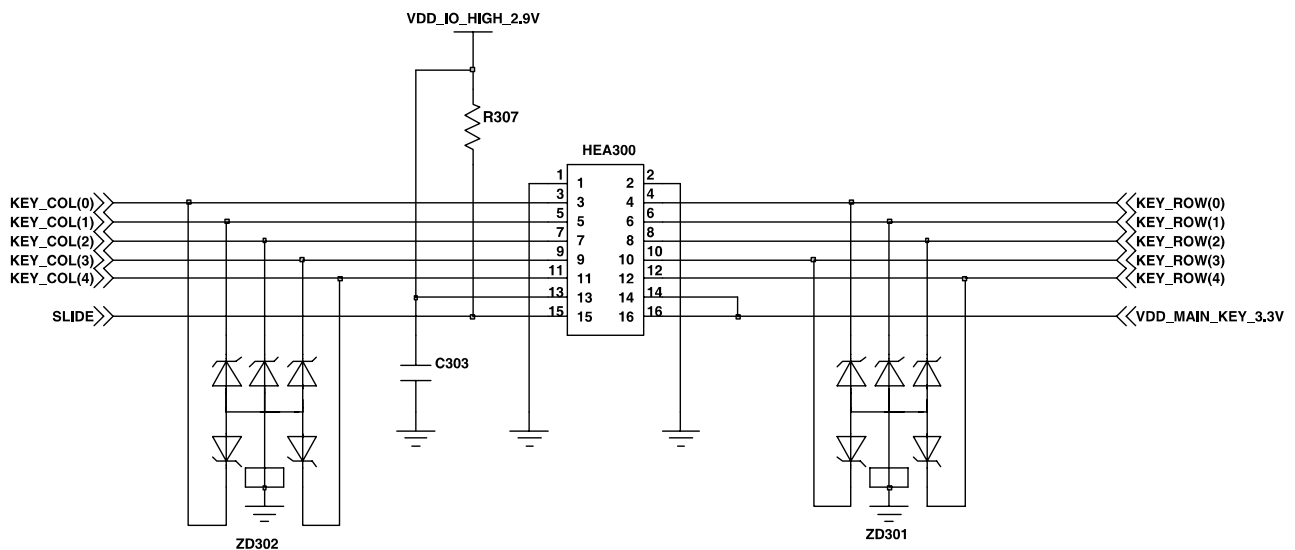
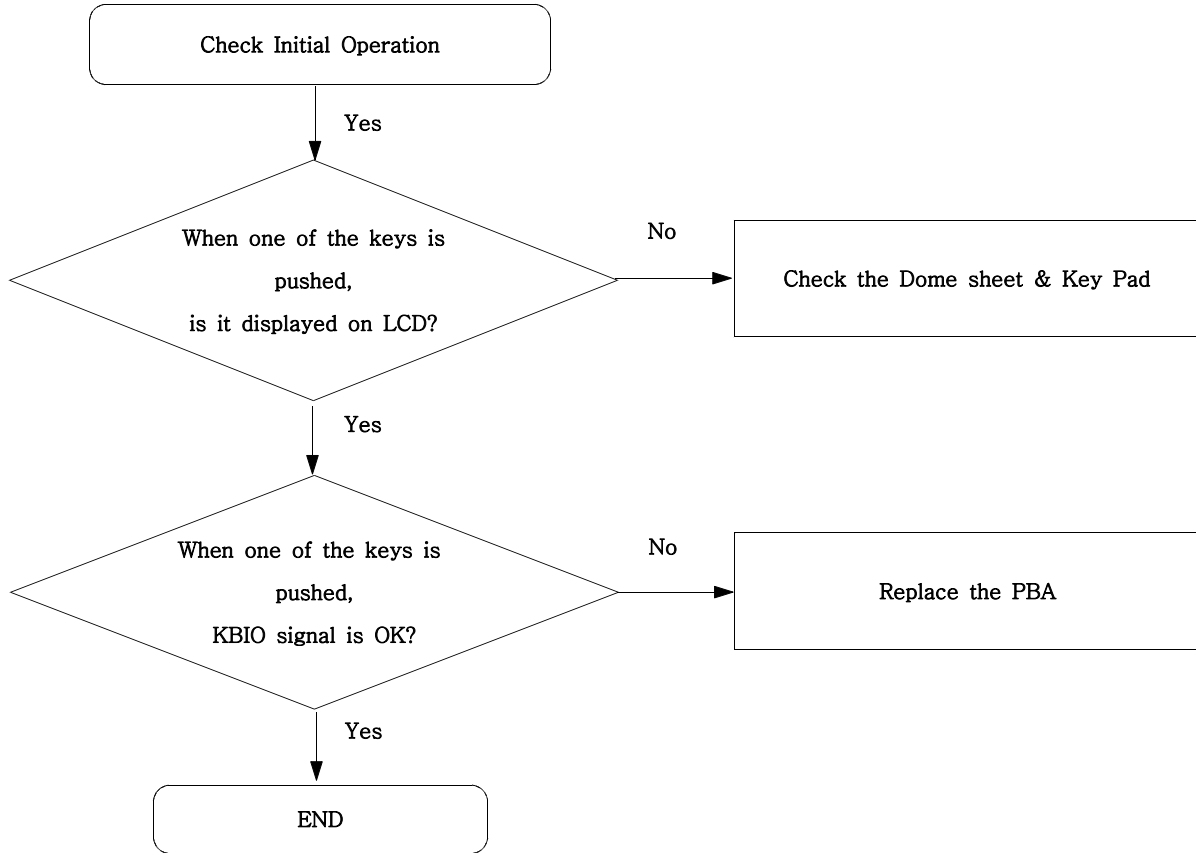


9-6. Speaker Part(Melody)

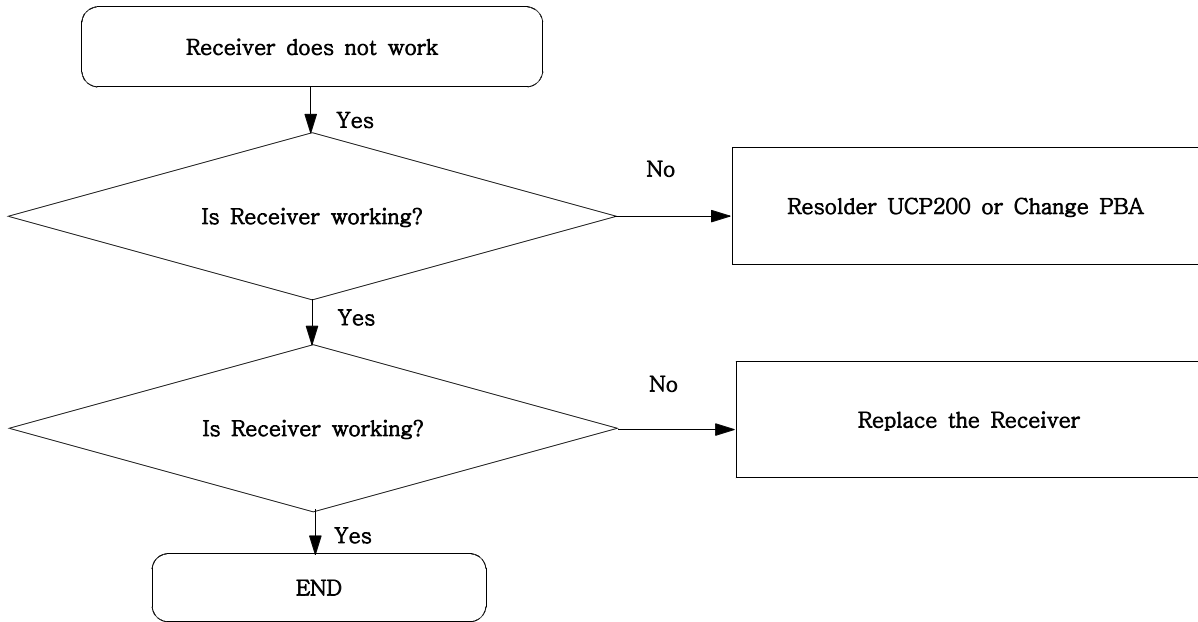




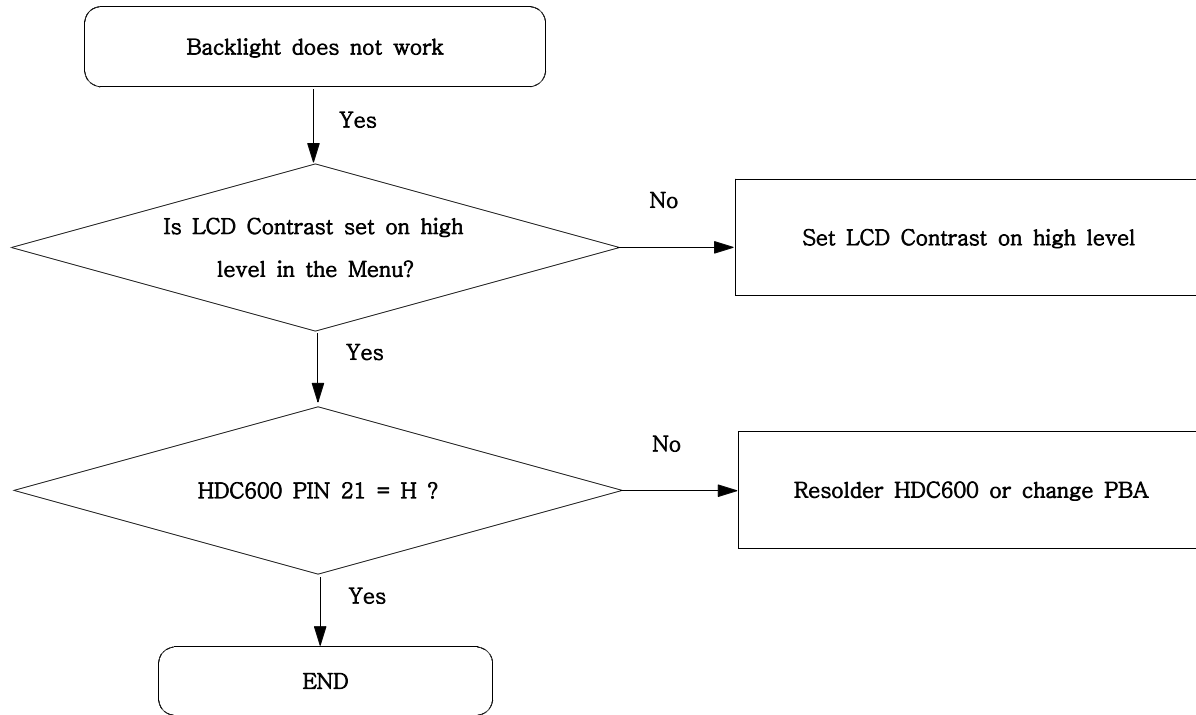
9-7. Key Data Input



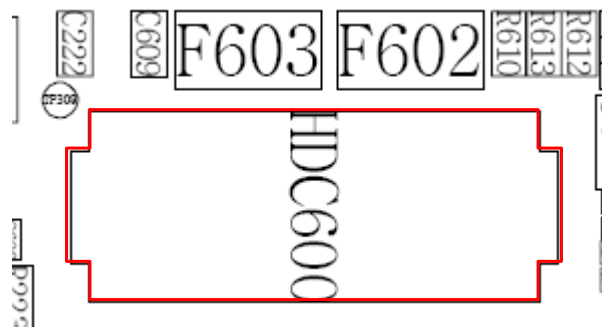
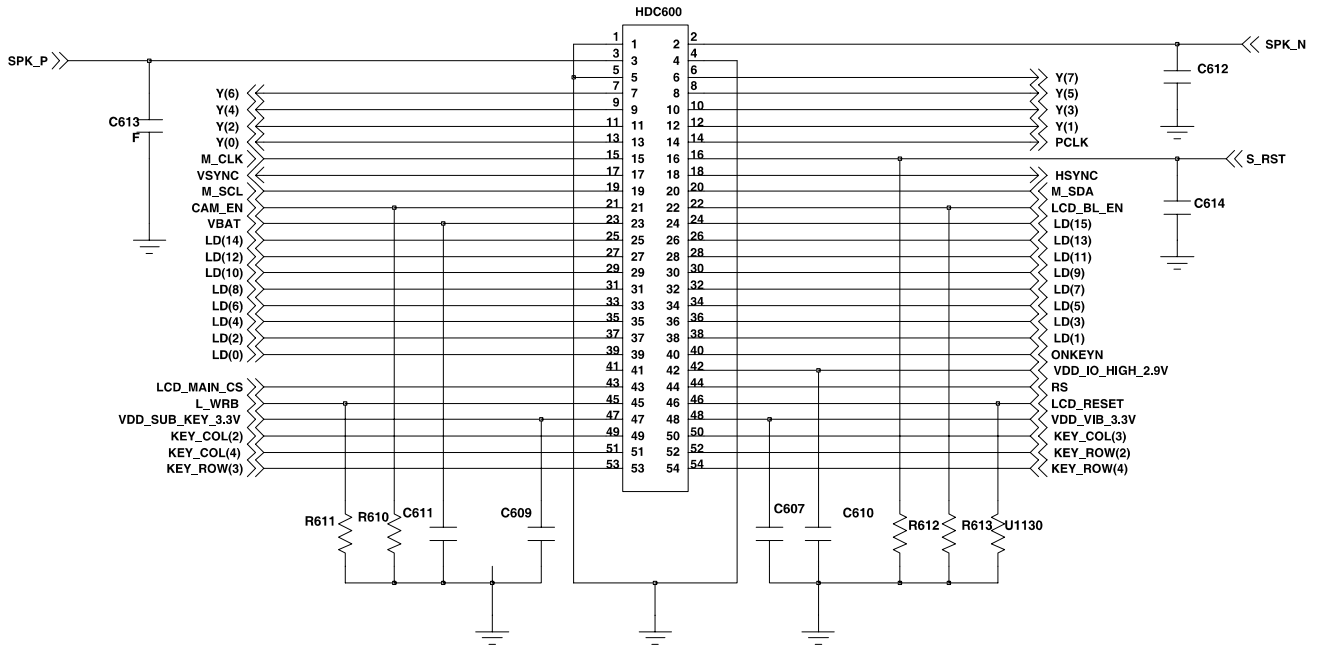
9-8. Receiver Part



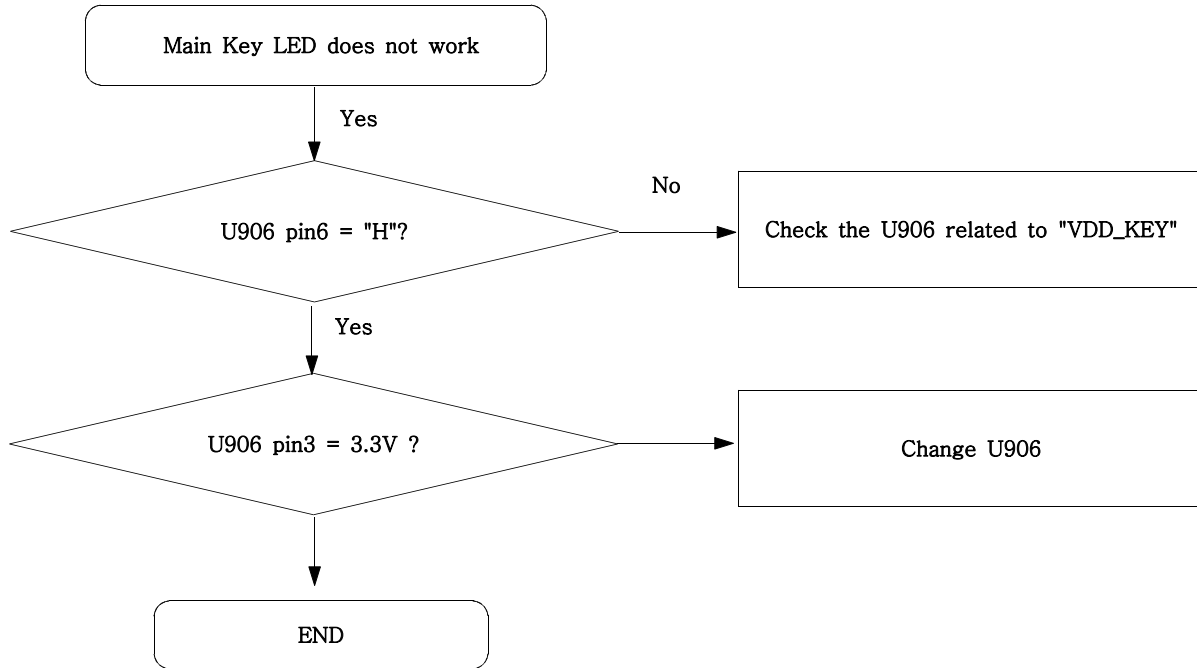
9-9. Back Light (for Color Main LCD)

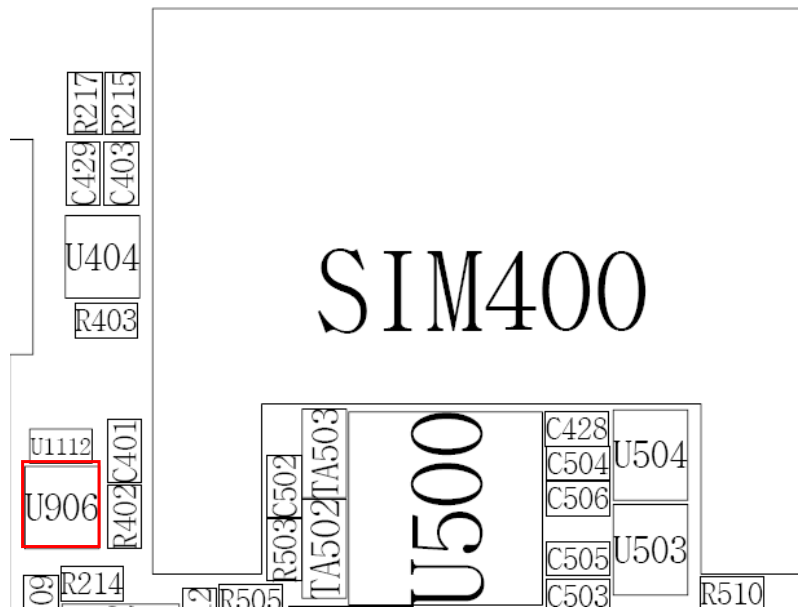
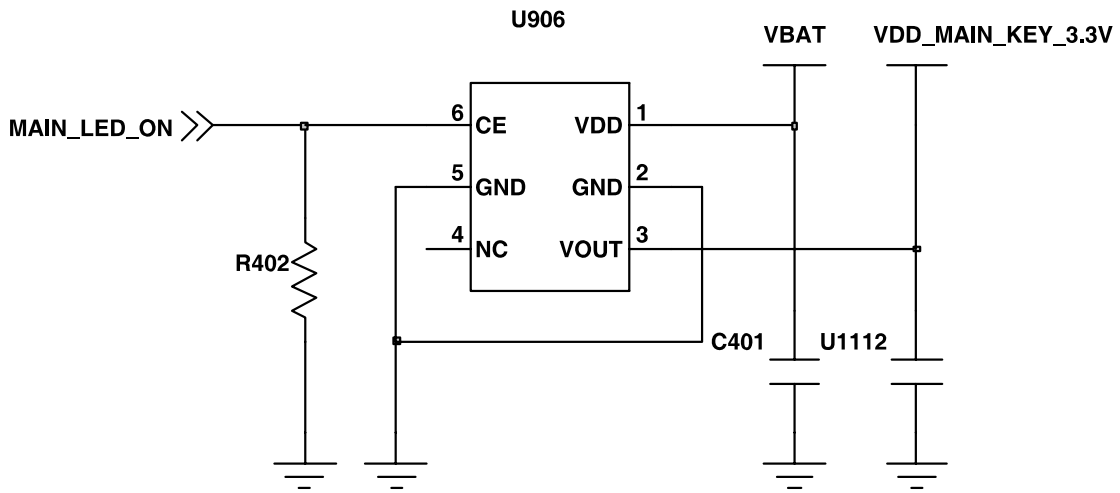


Flow Chart of Troubleshooting

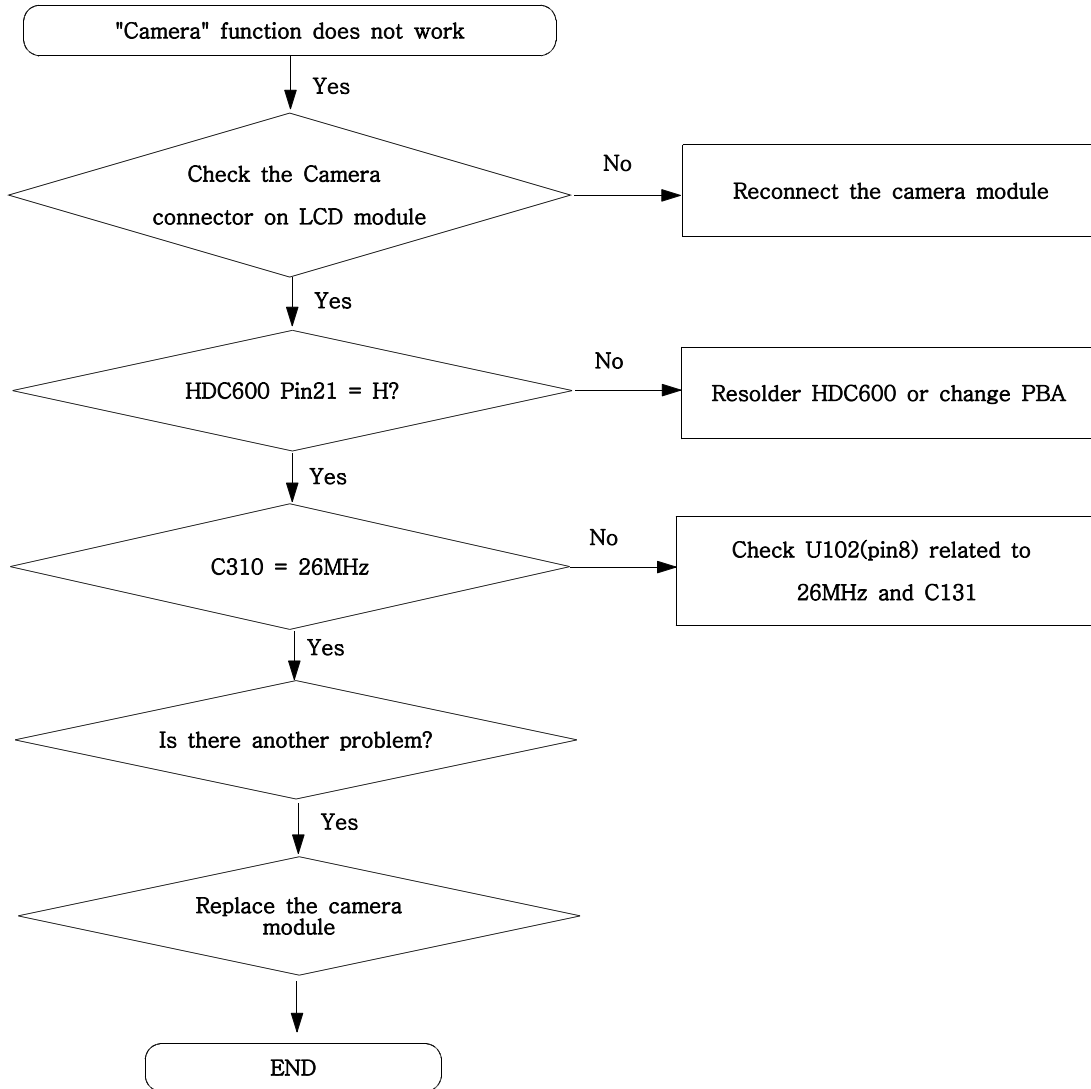


9-10. Key Back Light

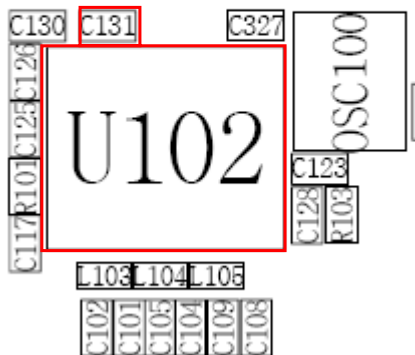
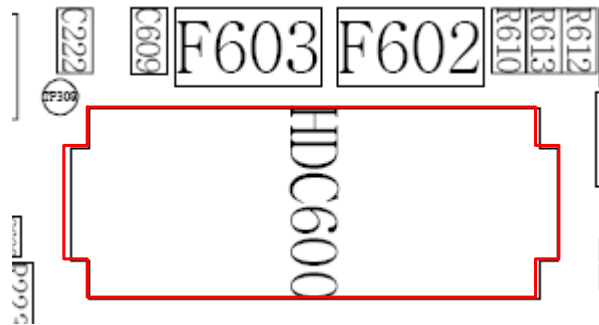
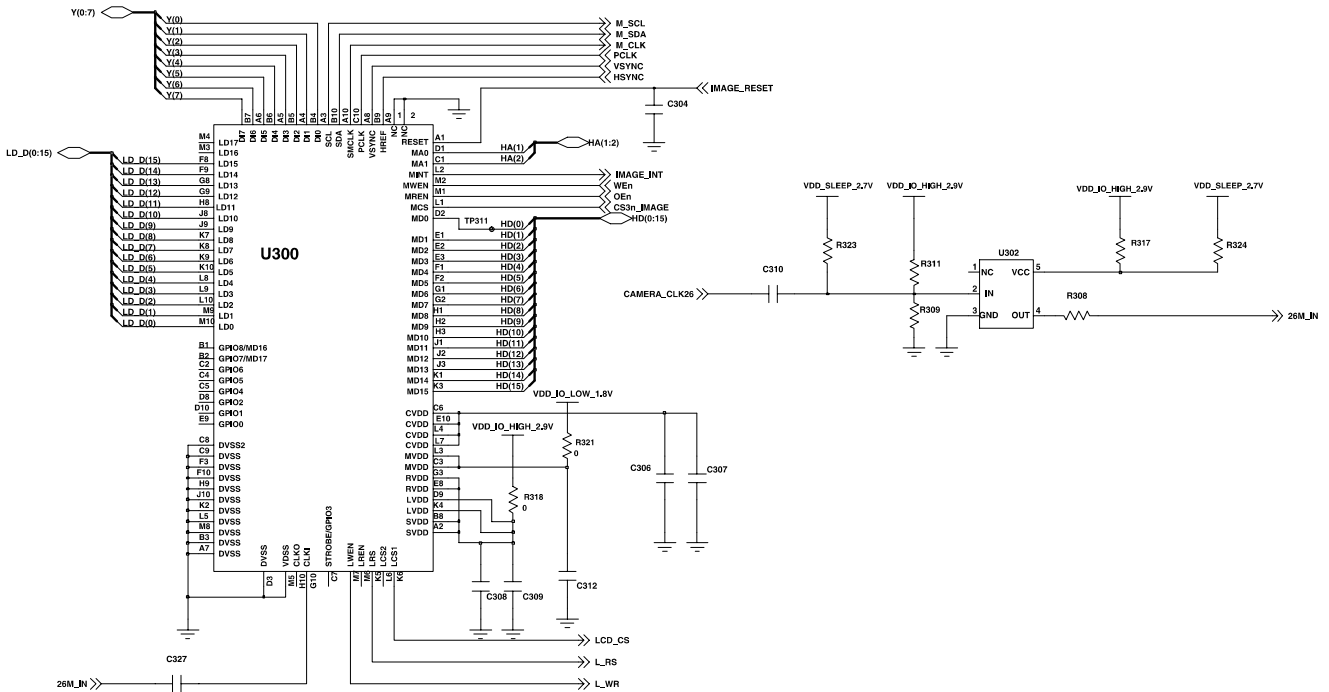




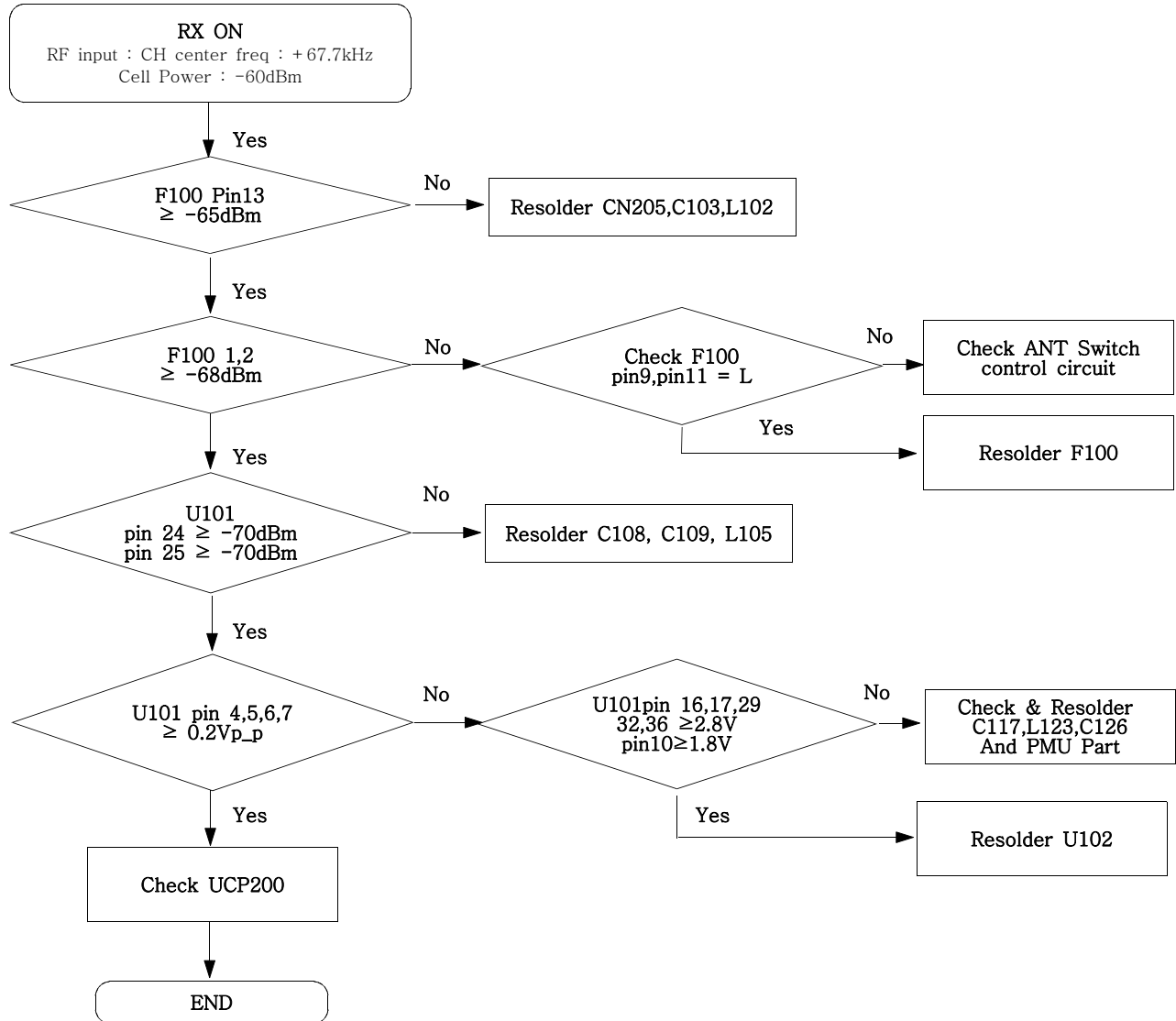
9-11. Camera part



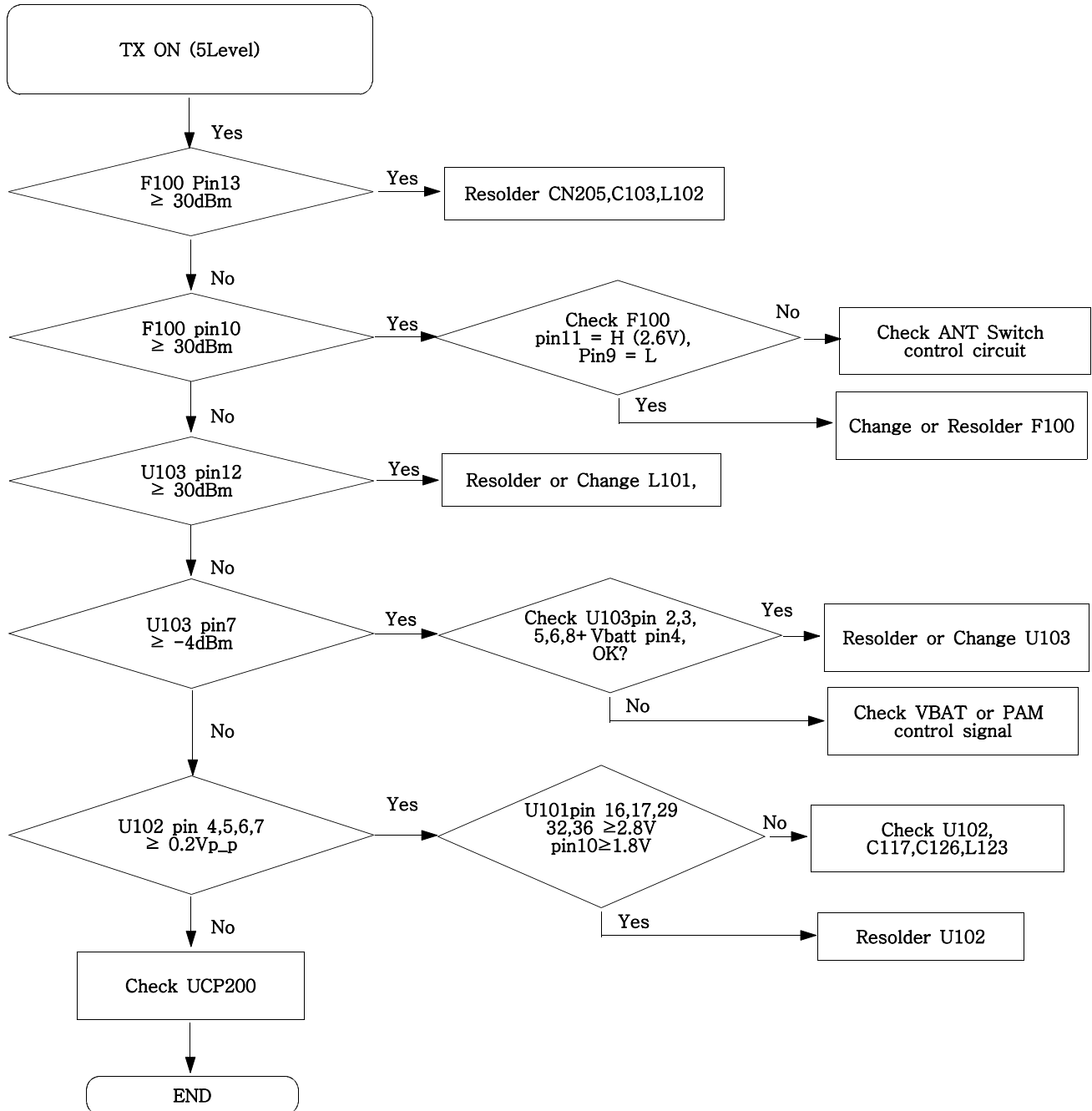
Flow Chart of Troubleshooting



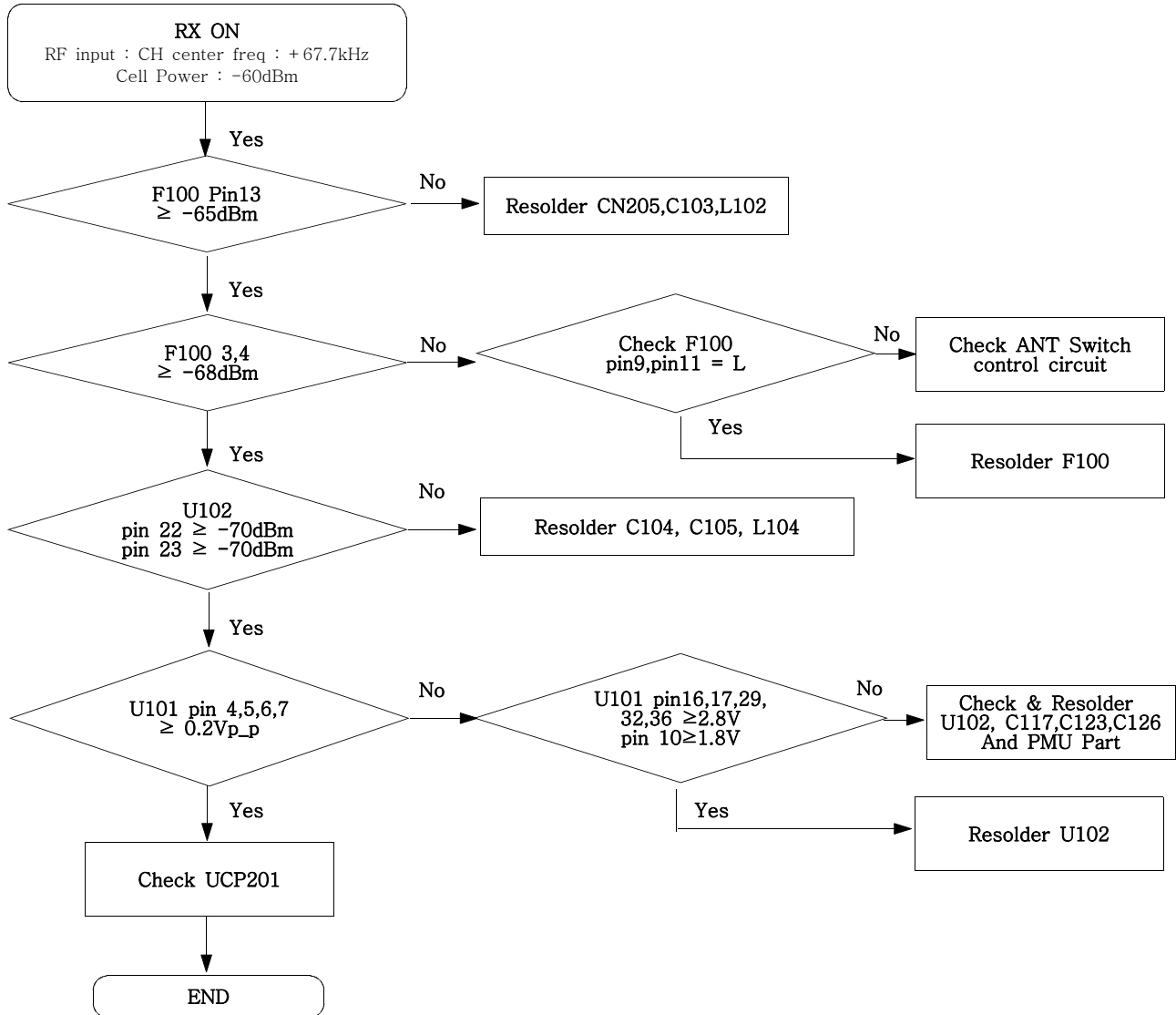
9-12. GSM Receiver



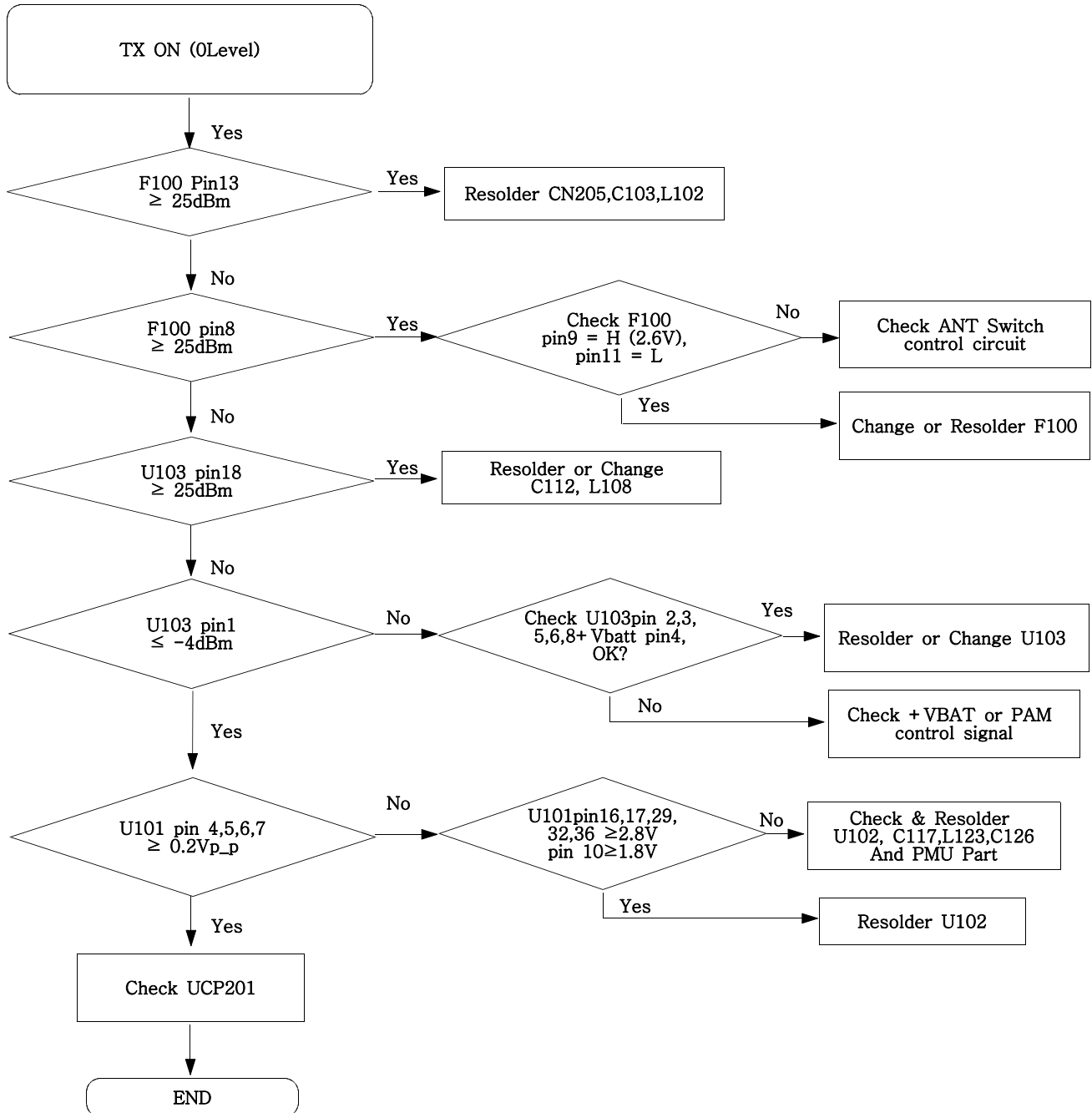
9-13. GSM Transmitter



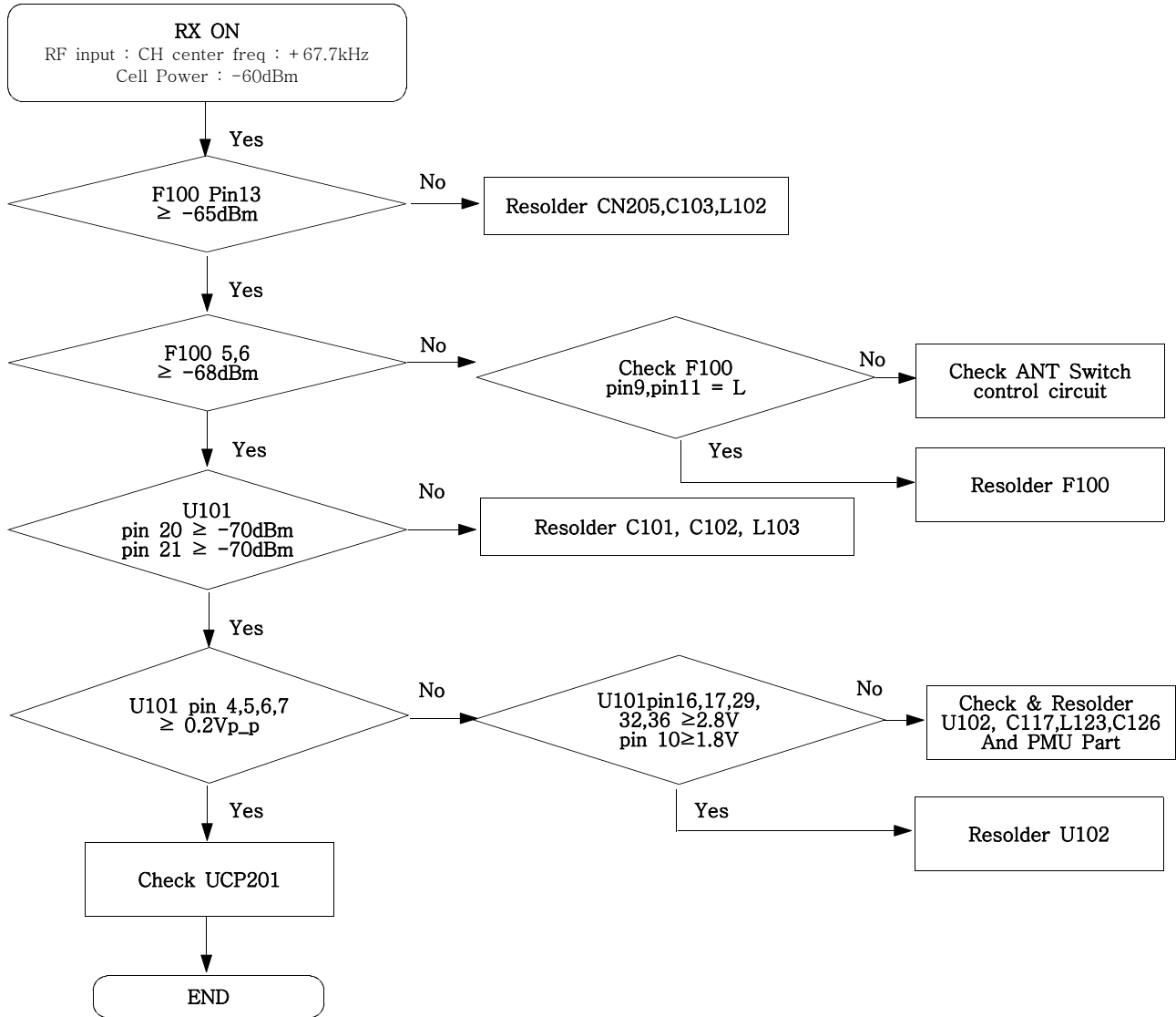
9-14. DCS Receiver



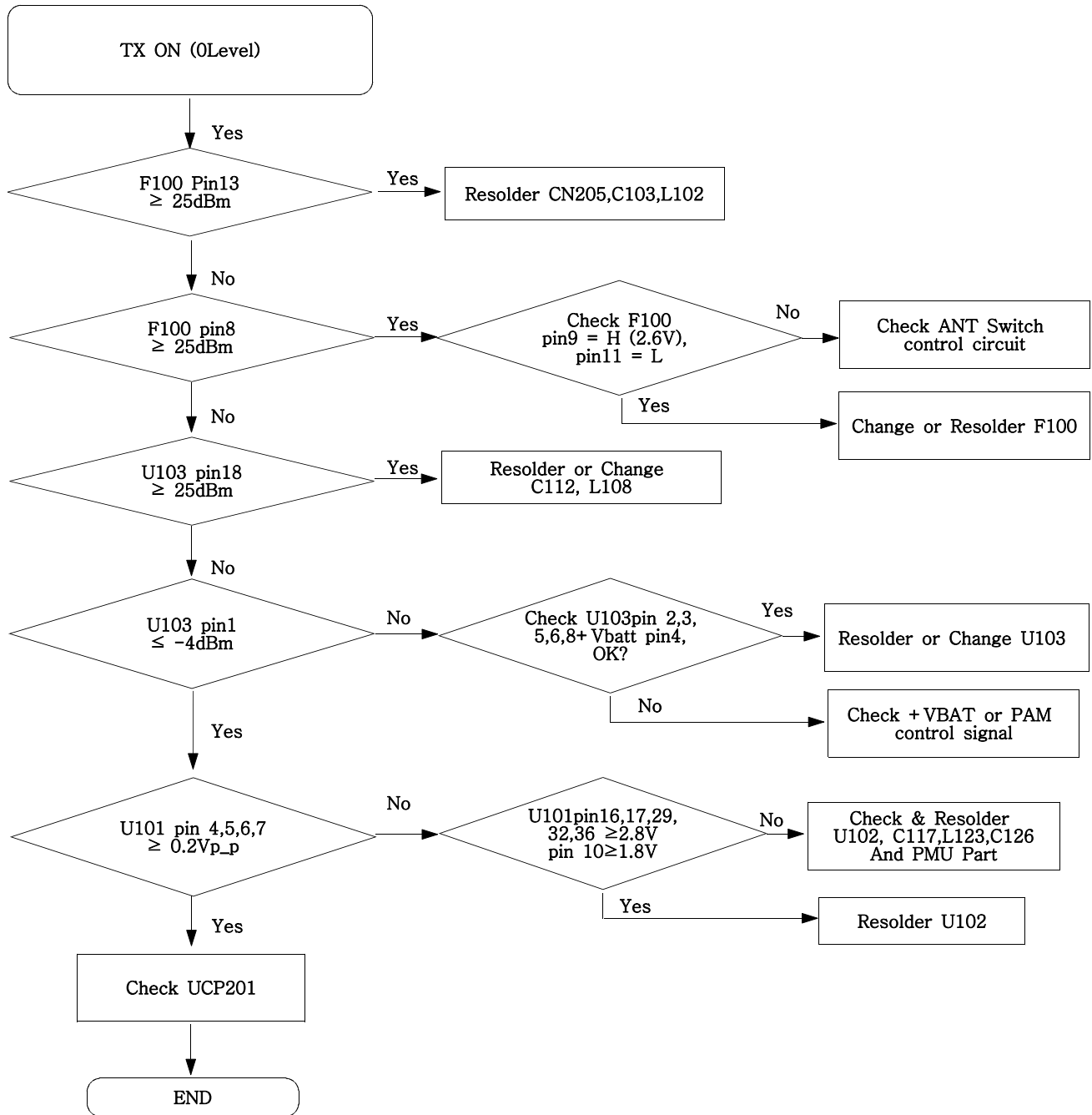
9-15. DCS Transmitter

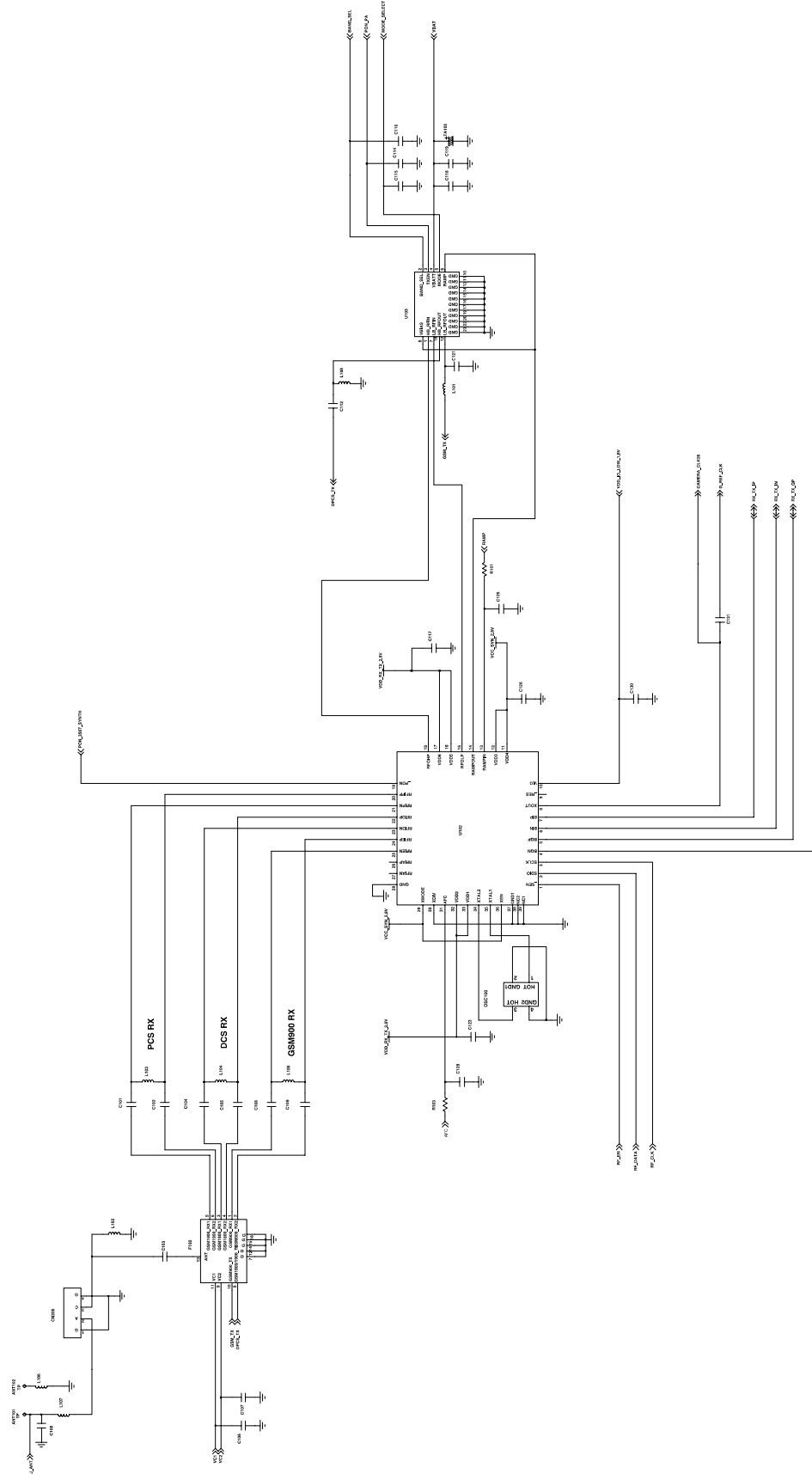


9-16. PCS Receiver

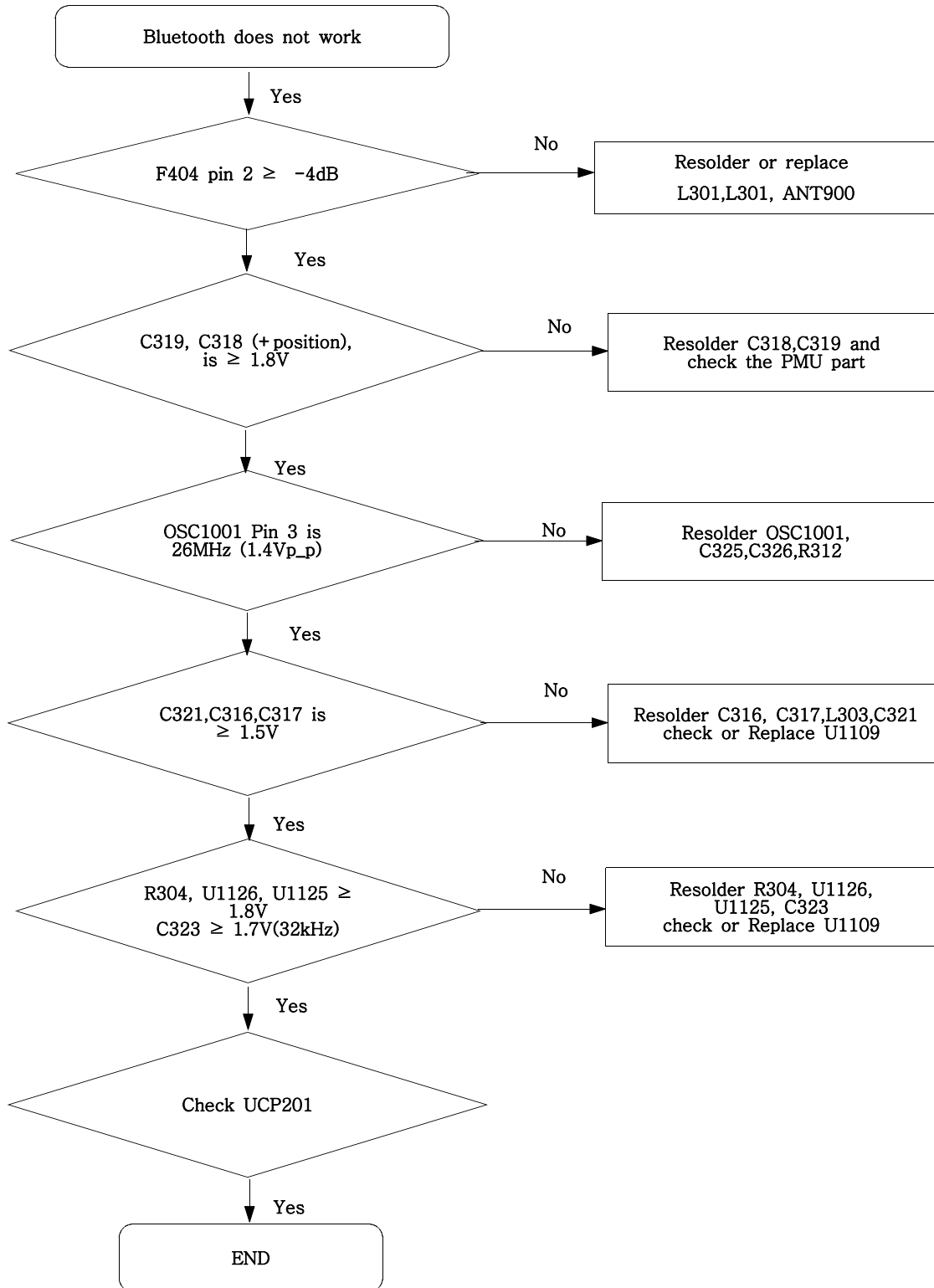


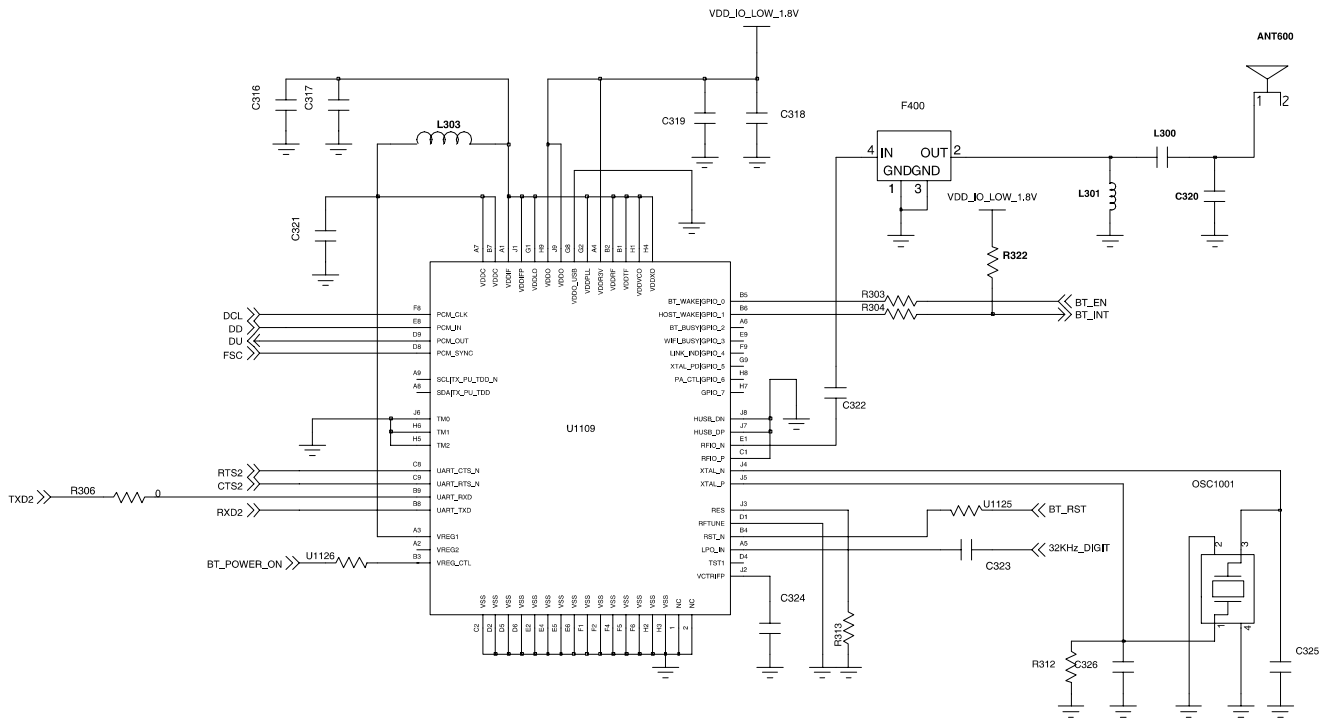
9-17. PCS Transmitter





9-18. Bluetooth part





9-19. Radio part

