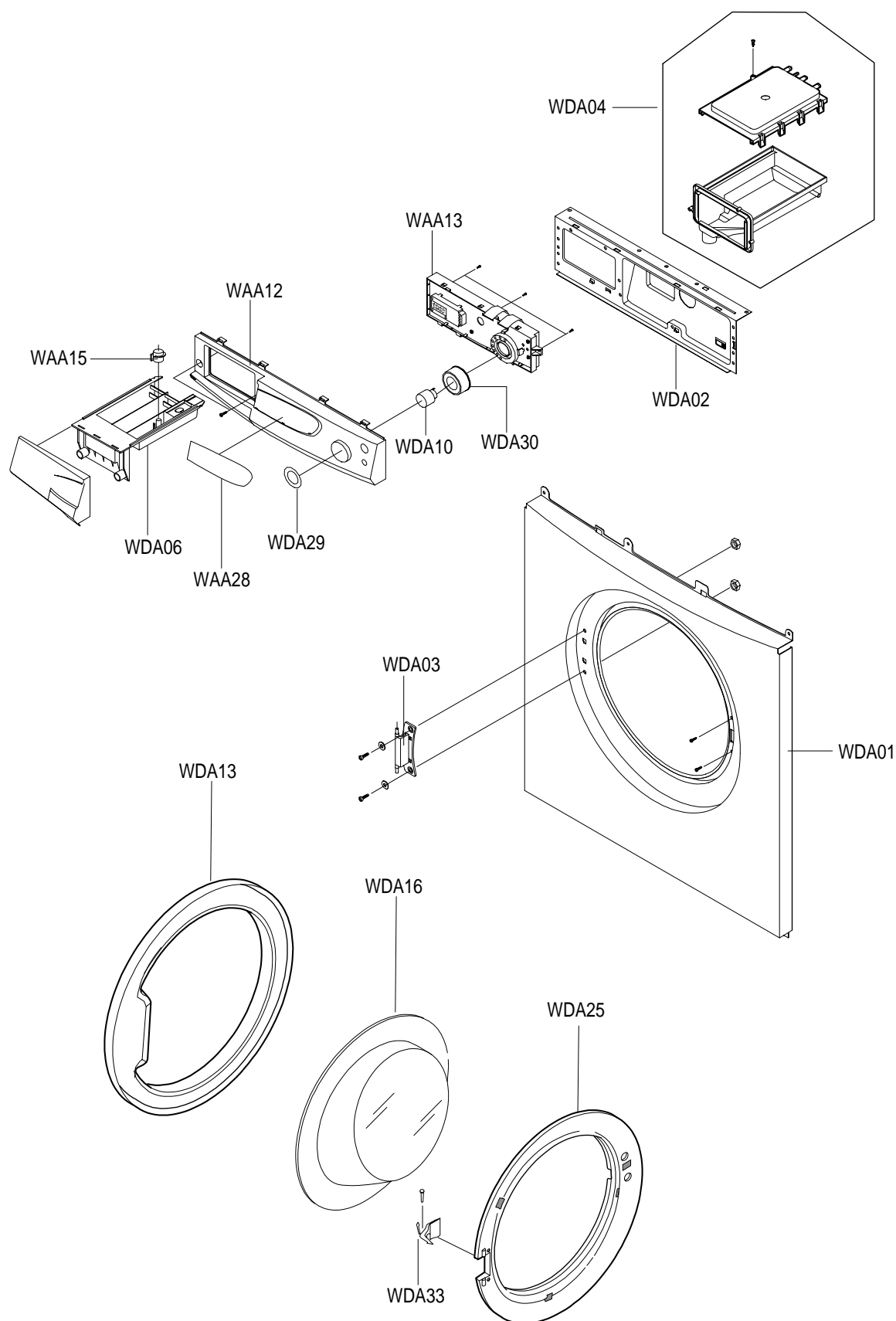
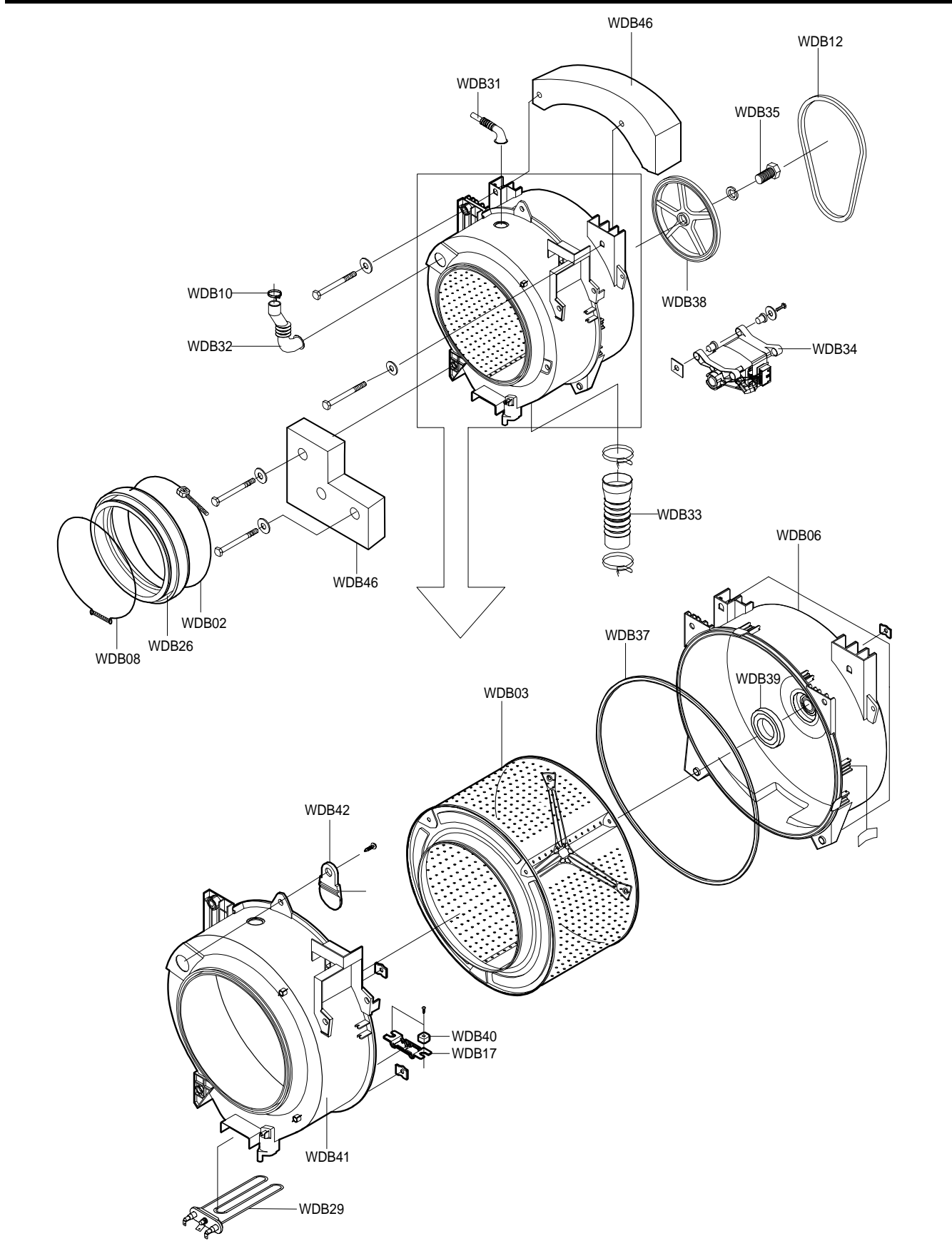


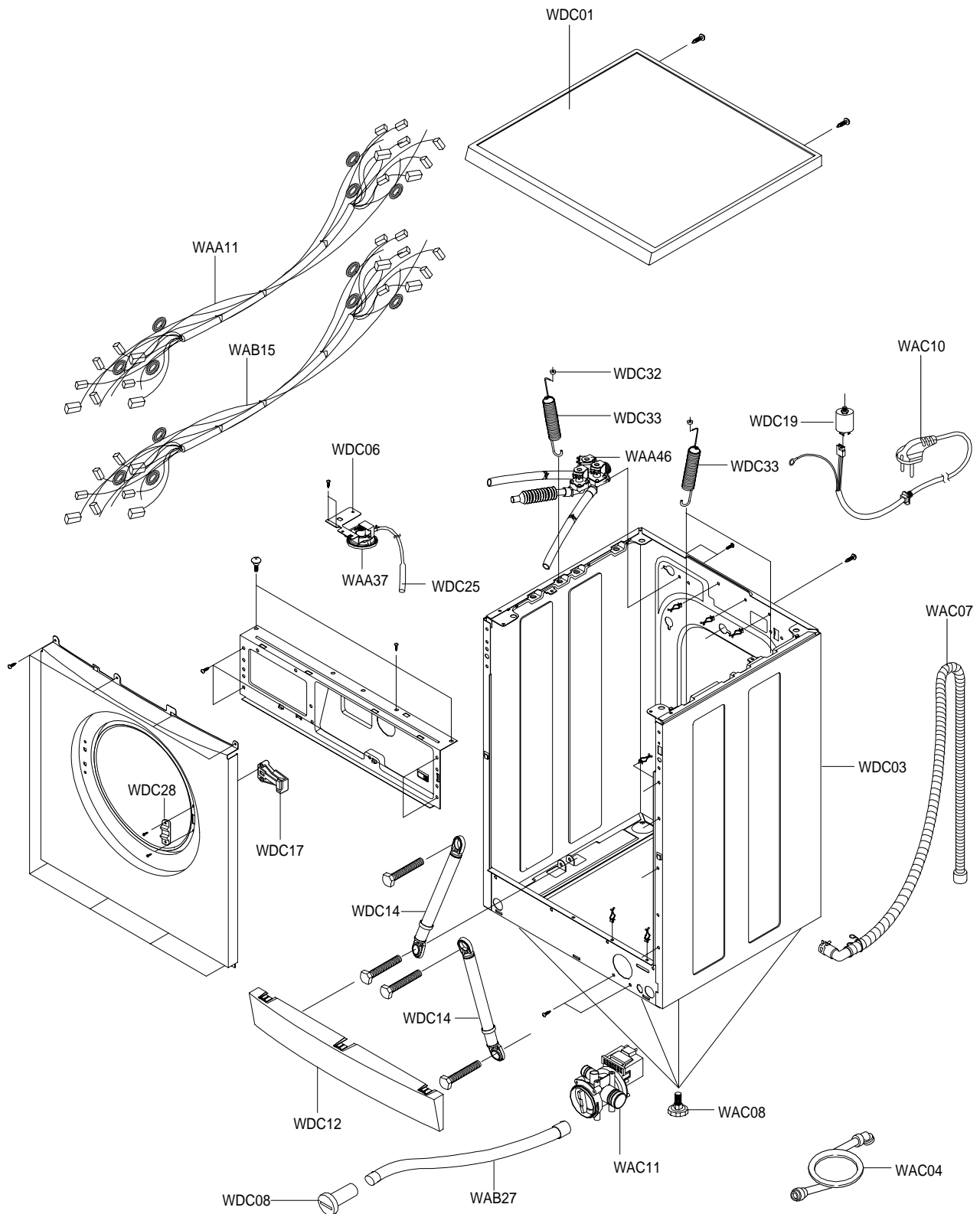
15. TOP(FRONT) - Exploded View



15. TUB - Exploded View



15. CASE - Exploded View



15. Parts List

LOCATION NO.	CODE NO.	DESCRIPTION;SPECIFICATION	Q'TY	REMARK
WAA11	DC96-00281A	ASSY-M.WIRE HARNESS;SL-100,SLIM	1	
WAA12	DC97-01785U	ASSY-PANEL CONTROL;S803JGB,BLUE	1	S803JGB/YLP
WAA12	DC97-01785V	ASSY-PANEL CONTROL;S803JGE,GOLD	1	S803JGE/YLP
WAA12	DC97-01785W	ASSY-PANEL CONTROL;S803JGP,PEARL/WHT	1	S803JGP/YLP
WAA12	DC97-01785T	ASSY-PANEL CONTROL;S803JGS,SILVER	1	S803JGS/YLP
WAA13	MF-S803J-00	ASSY PCB PARTS:S803J	1	
WAA15	DC61-10316B	CAP-RINSE;PP(TB-52),WHT,SEW-740DR	1	
WAA28	DC64-00186Q	INLAY-PANEL;S803JGB,PC(T=0.5),-,BLUE,-	1	S803JGB/YLP
WAA28	DC64-00186R	INLAY-PANEL;S803JGE,PC(T=0.5),-,GOLD,-	1	S803JGE/YLP
WAA28	DC64-00186S	INLAY-PANEL;S803JGP,PC(T=0.5),-,PEARL/WHT	1	S803JGP/YLP
WAA28	DC64-00186T	INLAY-PANEL;S803JGS,PC(T=0.5),-,SILVER	1	S803JGS/YLP
WAA37	DC32-30006P	SENSOR PRESSURE;DN-S14(P1291),TERMINAL-T	1	
WAA46	DC62-30313D	VALVE-WATER;-NYLON,-,NTR,-,ELBI/3WAY	1	
WAB15	DC96-00053B	ASSY-WIRE HARNESS;P8091/6091(SUB),LOW-RP	1	
WAB18	DC60-40133A	BOLT-PULSATOR;M8,L25,-,STS 304	3	
WAB27	DC62-10302A	HOSE-DRAIN;EPDM,ID5.5,BLK,L220,OD9.5	1	
WAC04	DC62-10289B	HOSE-WATER(C);PVC+NYLON,ID10.2,GRY,L1500	1	
WAC07	DC97-00139D	ASSY-HOSE DRAIN(O);S1005J,PP(BB110)/L182	1	
WAC08	DC97-02079A	ASSY-LEG;S1005J,SLIM/25MM	4	
WAC10	DC96-00146A	ASSY-POWER CORD;P1291~P6091,250V/16A(PV)	1	
WAC11	DC96-00115A	ASSY-PUMP DRAIN;P1291-P1091,220-240V/50H	1	
WDA01	DC97-00702D	ASSY-FRAME FRONT;S803J/BLUE,ROUND-TYPE	1	S803JGB/YLP
WDA01	DC97-00702E	ASSY-FRAME FRONT;S803J/GOLD,ROUND-TYPE	1	S803JGE/YLP
WDA01	DC97-00702A	ASSY-FRAME FRONT;P6091,ROUND-TYPE	1	S803JGP/YLP
WDA01	DC97-00702F	ASSY-FRAME FRONT;S803J/SILVER,ROUND-TYPE	1	S803JGS/YLP
WDA02	DC97-00417A	ASSY-FRAME PLATE(U);SWF-P12,FRAME-PLATE(1	
WDA03	DC97-00100C	ASSY-HINGE;S1005J,OPEN ANGLE 180DEG	1	
WDA04	DC97-02132A	ASSY-HOUSING DRAWER;S1005J,SLIM(U,M/L AS	1	
WDA06	DC61-00366A	BODY-DRAWER;SL-600,TB-53,-,-,SLIM-PJT	1	
WDA10	DC64-00085A	BUTTON-ENCODER;TRP/ABS,GRN,PV2-PJT,-	1	
WDA13	DC61-00055C	COVER-DOOR;S803J,ABS,-,-,BLUE,DANBY,-	1	S803JGB/YLP
WDA13	DC61-00055E	COVER-DOOR;S803J,ABS,-,-,GOLD,DANBY,-	1	S803JGE/YLP
WDA13	DC61-00055D	COVER-DOOR;S803J,ABS,-,-,PEAR/WHT,DANBY,-	1	S803JGP/YLP
WDA13	DC61-00055F	COVER-DOOR;S803J,ABS,-,-,SILVER,DANBY,-	1	S803JGS/YLP
WDA16	DC61-00013A	DOOR-GLASS;GLASS,NTR,SWF-P12	1	
WDA25	DC61-00057A	HOLDER-GLASS;ABS(HG-0760),-,-,WHT,DWM5	1	
WDA29	DC64-00084G	INLAY-ENCODER;S1005JGB~S803JGB,PC(T=0.5)	1	S803JGB/YLP
WDA29	DC64-00084H	INLAY-ENCODER;S1005JGE~S803JGE,PC(T=0.5)	1	S803JGE/YLP
WDA29	DC64-00084J	INLAY-ENCODER;S1005JGP~S803JGP,PC(T=0.5)	1	S803JGP/YLP
WDA29	DC64-00084K	INLAY-ENCODER;S1005JGS~S803JGS,PC(T=0.5)	1	S803JGS/YLP
WDA30	DC64-00082B	KNOB-ENCODER;PV2-PJT,TRP/ABS,-,SILVER,Cr	1	
WDA33	DC66-00016A	LEVER-DOOR;POM,-,-,-,NTR,DW	1	
WDB02	DC91-12077A	ASSY-CLAMP DIAPHRAGM;SWF-P12,TUB	1	
WDB03	DC97-02099A	ASSY-DRUM;S1005J,LEFTER TYPE	1	
WDB06	DC97-02103A	ASSY-TUB BACK;S1005J(SLIM),BACK/1000RPM	1	
WDB08	DC91-12078A	ASSY-WIRE DIAPHRAGM;SWF-P12,FRAME-FRONT	1	
WDB10	DC65-60125A	BAND RING;HSWR,YEL,W38.5,T2.4	1	
WDB10	DC65-60125B	BAND RING;HSWR,YEL,PI25,T2.4	1	
WDB12	6602-001073	BELT-TIMING GEAR;POLYURETHAN,	1	
WDB17	DC61-40344A	BRACKET-HEATER;STS430,T1,SWF-P12,-	1	
WDB26	DC61-20219C	DOOR-DIAPHRAGM;P805J,EPDM,-,GRY,-,-,(WAS	1	
WDB29	DC47-00006A	HEATER;ILCA,P-Slim Model,INCOLOY,-,-,240	1	
WDB31	DC62-10303A	HOSE-AIR;EPDM,ID24,BLK,L130,SWF-P12/OD4	1	
WDB32	DC62-10305A	HOSE-DRAWER TUB;EPDM,ID35,BLK,L158,SWF-P	1	

15. Parts List

LOCATION NO.	CODE NO.	DESCRIPTION;SPECIFICATION	Q'TY	REMARK
WDB33	DC62-00121A	HOSE-FILTER TUB;S1005J,ID65,-,-,-,SLIM	1	
WDB34	DC31-00002E	MOTOR-DRUM;HXGN2I.02,SFW-P8,-,50Hz,-,-,L	1	
WDB35	DC60-50148B	NUT-HEX;SM20C(NYLON),M12,-,-,	1	
WDB37	DC62-40183A	PACKING-TUB;EPDM,BLK,SWF-P12	1	
WDB38	DC66-10176B	PULLEY;ALDC,-,D297,P1291,ID12.5	1	
WDB39	DC62-00007A	SEAL-OIL;NBR(SD25),BLK,P6091/NBU15	1	
WDB40	DC61-60496A	SPACER-HEATER;PBT,SWF-P12,-	2	
WDB41	DC61-00365A	TUB-FRONT;SL-600,FRPP(GR30%),-,-,-	1	
WDB42	DC62-20311A	VANE-CHECK;EPDM,BLK,SWF-P12,-	1	
WDB46	DC66-00171A	WEIGHT-BALANCE;GC-150,SL-600,SLIM/UPPER/	1	
WDB46	DC66-00172A	WEIGHT-BALANCE;GC-150,SL-600,SLIM/LOWER/	1	
WDC01	DC97-00851J	ASSY-COVER TOP;S803JGB,MDF/BLUE/SLIM	1	S803JGB/YLP
WDC01	DC97-00851K	ASSY-COVER TOP;S803JGE,MDF/GOLD(EUN BI)	1	S803JGE/YLP
WDC01	DC97-00851L	ASSY-COVER TOP;S803JGP,MDF(PEARL/WHT)	1	S803JGP/YLP
WDC01	DC97-00851M	ASSY-COVER TOP;S803JGS,MDF/SILVER/SLIM	1	S803JGS/YLP
WDC03	DC99-00164A	ASSY-PAINT FRAME;S803J/BLUE,COLD/SLIM-MO	1	S803JGB/YLP
WDC03	DC99-00166A	ASSY-PAINT FRAME;S803J/GOLD,COLD/SLIM-MO	1	S803JGE/YLP
WDC03	DC99-00138A	ASSY-PAINT FRAME;S803J,COLD/SLIM-MO	1	S803JGP/YLP
WDC03	DC99-00167A	ASSY-PAINT FRAME;S803J/SILVER,COLD/SLIM-MO	1	S803JGS/YLP
WDC06	DC61-40345A	BRACKET-PRESSURE;GI or GA,T1.0,SWK-P12,-	1	
WDC08	DC61-10673A	CAP-DRAIN;PP(TB53),WHT,SWF-P12	1	
WDC12	DC61-10672C	COVER-FRONT(L);S803JGB,-,-,-,BLUE,CIS,-	1	S803JGB/YLP
WDC12	DC61-10672D	COVER-FRONT(L);S803JGE,-,-,-,COLD(EUN BI)	1	S803JGE/YLP
WDC12	DC61-10672A	COVER-FRONT(L);SWF-P12,PP(BJ-730),WHT	1	S803JGP/YLP
WDC12	DC61-10672E	COVER-FRONT(L);S803JGS,-,-,-,SILVER,CIS	1	S803JGS/YLP
WDC14	DC66-60149A	DAMPER-SHOCK;- ,SWF-P12,80N	2	
WDC17	DC61-00122A	DOOR-LOCK S/W;250V(120V)16A,BLK,DANBY.P6	1	
WDC19	DC29-00006A	FILTER-EMI;DFC-2712R,P/PV/SLIM,250V,12A,	1	
WDC25	DC62-10311A	HOSE-PRESSURE;EPDM,ID13.5,BLK,-,SWF-P12/	1	
WDC28	DC66-00016A	LEVER-DOOR;POM,-,-,-,NTR,DWM599W,DANBY	1	
WDC32	DC61-60180A	SLEEVE-PLUG;NYLON#6,SEW-720DR,NTR	2	
WDC33	DC61-00441A	SPRING-HANGER;S1005J,HSWR,CD3.0,-,L175,-	2	

15. Screw/Bolt List

CODE NO.	DESCRIPTION	SPECIFICATION	Q'TY	ASSEMBLY LOCATION
6011-001421	BOLT-FLANGE	M7,L61(29.4),ZPC(YEL),SWRCH18A	1	
6011-001232	BOLT-HEX	D7,L71(39.4),ZPC(YEL),SWRCH18A	1	WEIGHT/L
6011-001422	BOLT-HEX	M10,L20,ZPC(YEL),SWRCH10A	1	
DC60-40140A	BOLT-HEX	WEIGHT-UL/SM10C,HEX,M8,L147,-,ZPC2(YEL),-,-	2	WEIGHT/U
DC60-40141A	BOLT-HEX	SM10C/DAMPER,HEX,M8,L66,-,ZPC2(YEL),-,-	2	DAMPER+TUB
DC60-40005A	BOLT-HEX	M4,L60,ZPC2(YEL),SS41C,-,-,-	1	
DC60-40144A	BOLT-HEX	M10,L41,ZPC2(YEL),SM10C/DAMPER	2	DAMPER+FRAME
DC60-40133A	BOLT-PULSATOR	M8,L25,-,STS 304	3	
DC60-40146A	BOLT-SPANER	-,-,OD36,T2.5,L52,FE,FZY,-,P12	1	ACCESSORY
DC60-40138A	BOLT-W.MOTOR	SM10C,HEX,M8,L62,-,ZPC2(YEL),-,-	1	MOTOR
DC60-40138A	BOLT-W.MOTOR	SM10C,HEX,M8,L62,-,ZPC2(YEL),-,-	1	WEIGHT/L
DC60-50010A	NUT-DIAPHRAGM	EGI,M4,-,-,2.5TX20X8	1	
DC60-50010B	NUT-DIAPHRAGM	EGI,M4.2,-,-,2.5TX20X8	1	
DD60-50018A	NUT-FLANGE	-,M5XP0.8,FZY,MSWR10,-	2	HINGE
DC60-50148B	NUT-HEX	SM20C(NYLON),M12,-,-,ZPC3(YEL),-,HEX,P-PRO	1	PULLEY
DC60-10019B	SCREW MACHINE	RH,+M5,L12,STS430,SEAL-LOCK	2	HINGE+FRAME
DC60-10019B	SCREW MACHINE	RH,+M5,L12,STS430,SEAL-LOCK	2	HOLD-GLASS+HINGE
DC60-20063A	SCREW TAPPING	TH,-,2,D3.5,L20,FZY,-	2	S/W-DOOR+FRAME
DC60-20054D	SCREW TAPPING	TH,+1,D4,L12,STS304,-	4	COVER-DOOR
DC60-20060A	SCREW TAPPING	TH,+2,D4,L8,FE,FZY	1	LEVER-DOOR+SPRING
DC60-20054D	SCREW TAPPING	TH,+1,D4,L12,STS304,-	1	VANE-CHECK
DC60-20049A	SCREW TAPPING	SCM430,2,PH,+D4,L12,-,-,-	1	HOUSING-DRAWER
DC60-20054C	SCREW TAPPING	TH,+1,D4,L12,FE FZY,-	1	HOUSING-DRAWER
DC60-20136A	SCREW TAPPING	TH,+2,D5,20,ZPC3,COVER-TOP	2	FRAME(TOP)
DC60-20050C	SCREW TAPPING	-,-,2S,D3,L8,FZY,-	2	B/K+PRE-S/W
DC60-20054A	SCREW TAPPING	TH,+1,D4,L10,ZPC3,-	2	B/K-C.T
DC60-20030A	SCREW TAPPING	FH,-,1,D4,L12,NTR,-	1	C-PANEL+FRAME
DC60-20049A	SCREW TAPPING	SCM430,2,PH,+D4,L12,-,-,-	5	PCB+C-PANEL
DC60-20054C	SCREW TAPPING	TH,+1,D4,L12,FE FZY,-	1	CLAMP-HOSE+FRAME
DC60-20054D	SCREW TAPPING	TH,+1,D4,L12,STS304,-	2	PUMP+FRAME
DC60-20060A	SCREW TAPPING	TH,+2,D4,L8,FE,FZY	8	FRAME+FRAME-FRONT
DC60-20060A	SCREW TAPPING	TH,+2,D4,L8,FE,FZY	4	FRAME+PLATE-UPPER
DC60-20138A	SCREW TAPPING	PH,TORX,1,D4,L12,ZPC2,-	1	P/CORD
DC60-20060A	SCREW TAPPING	TH,+2,D4,L8,FE,FZY	1	
DC60-20054C	SCREW TAPPING	TH,+1,D4,L12,FE FZY,-	1	
6001-000947	SCREW-MACHINE	TH,+M4,L10,NTR/WHT,STS304	2	W/V+FRAME
DC60-30015B	SCREW-SPECIAL	FLANGE,PH,+D4,L12,ZnFe(YEL),-	1	TUB+HOSE-PRESS
DC60-30015B	SCREW-SPECIAL	FLANGE,PH,+D4,L12,ZnFe(YEL),-	2	C/TOP+FRAME
DC60-30015B	SCREW-SPECIAL	FLANGE,PH,+D4,L12,ZnFe(YEL),-	2	SHUTTER
DE60-10046A	SCREW-TAP PH	PH,M3,L8,FEFZY,-,-,-,-	2	
DE60-10012A	SCREW-TAP TITE	TH,+3,M4,L10,SWR10,ZPC2,TOOTH	1	H/BEARING+E/W
DE60-10012A	SCREW-TAP TITE	TH,+3,M4,L10,SWR10,ZPC2,TOOTH	1	B/K-PRESSURE+FRAME
DE60-10012A	SCREW-TAP TITE	TH,+3,M4,L10,SWR10,ZPC2,TOOTH	1	P/CORD(E/W)
DE60-10012A	SCREW-TAP TITE	TH,+3,M4,L10,SWR10,ZPC2,TOOTH	1	E/W(SUB)+FRAME(F)
6002-000444	SCREW-TAPPING	TH,+2S,M4,L14,NTR,STS304	2	B/K-HEATER
6002-000445	SCREW-TAPPING	TH,+2S,M4,L18,NTR,STS304	2	PANEL+FRM+HOUSING-D
DC60-60040A	WASHER-NYLON	-,ID10.5,OD32,T2,-,PBSP-1/2H	1	FIXER
DC60-60044A	WASHER-PLAIN	-,ID10.5,OD30,T3,-,STS304	2	DAMPER+TUB
DC60-60044B	WASHER-PLAIN	SBC,ID8.4,OD30,T3,-,-,-	1	MOTOR
DC60-60044B	WASHER-PLAIN	SBC,ID8.4,OD30,T3,-,-,-	2	WEIGHT/L
DC60-60044B	WASHER-PLAIN	SBC,ID8.4,OD30,T3,-,-,-	2	WEIGHT/U
DC60-60044B	WASHER-PLAIN	SBC,ID8.4,OD30,T3,-,-,-	1	FIXER
DC60-60049A	WASHER-SPRING	-,ID10.5,OD18,T2.5,-,SIR	1	PULLEY