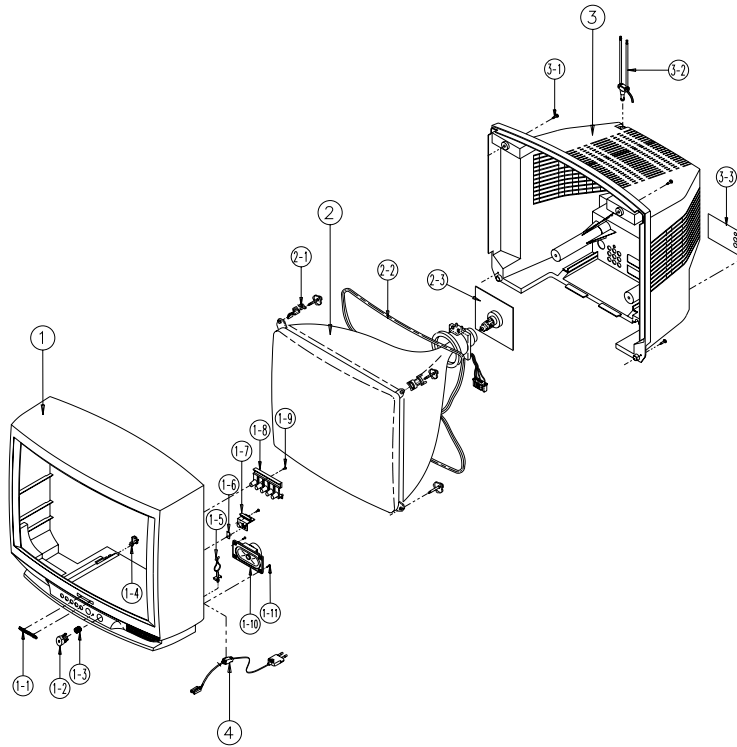


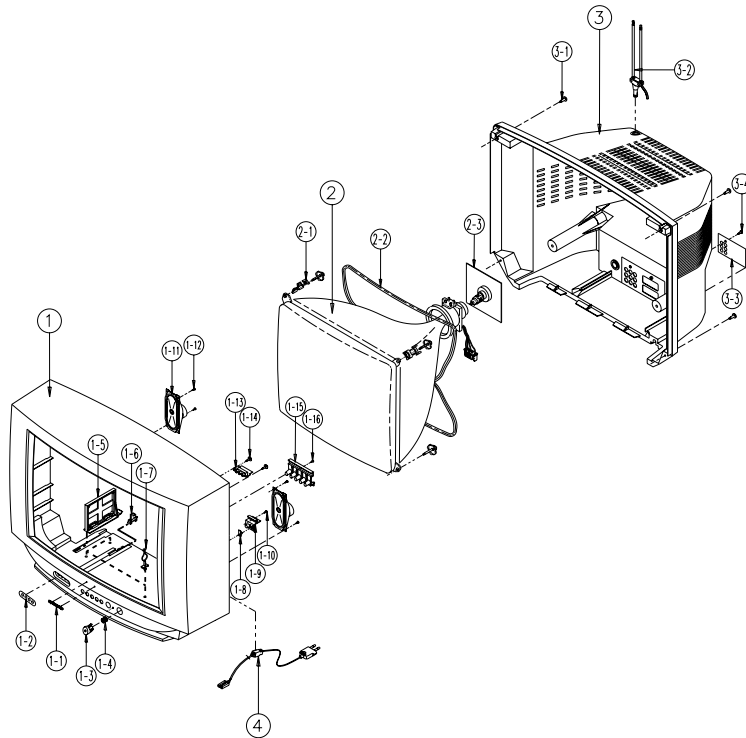
6. Exploded View & Parts List

6-1 CK564BVR3S/NWT



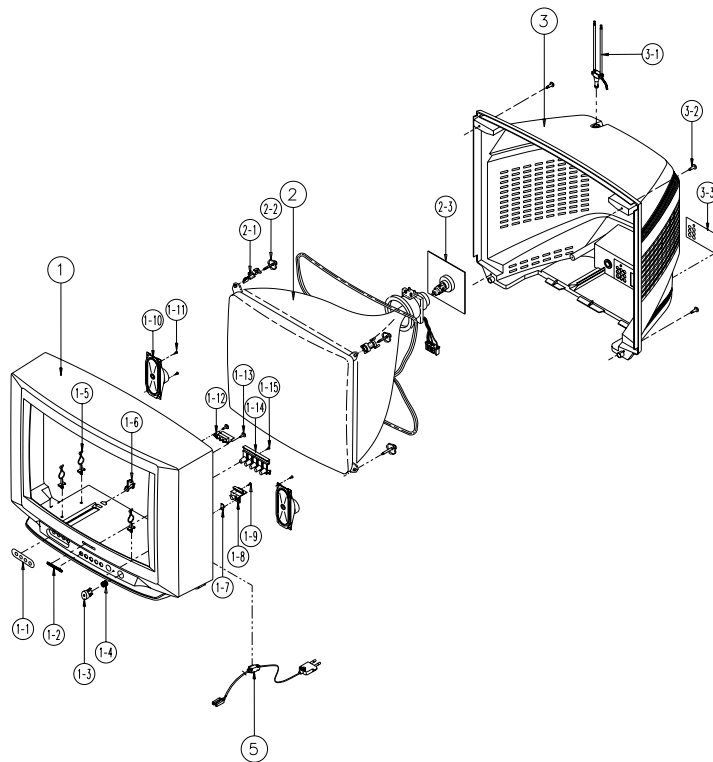
No	Code No	Description	Specification	Q'ty	Remark
1	AA91-10392B	ASSY-CABINET,FRONT	DP,CK564BVR,BK708P MLB,HB,BLK	1	
	AA64-31113G	CABINET-FRONT	-,CK564BVR,BK708P MLB,HIPS,HB,BLK,-,-	1	
1-1	AA64-70010B	BADGE-BRAND	AL,SS R2000 25,SILVER,L50,-,-,	1	
1-2	AA64-10712A	KNOB-POWER	-,564,565,566B,-,ABS,HB,BLK	1	
1-3	AA61-60003T	SPRING-CS	-,SUS304,0.5,OD7,H13.5,N5,-,-,	1	
1-4	AA61-40053A	STOPPER-PCB	ALL MODEL,HIPS HB,WHT,HB,-,-	1	
1-5	AA65-30105A	CLAMP-WIRE	NYLON 66,V2,NTR,15MM,ALL MODEL	1	
1-6	AA64-40461A	INDICATOR-LED	-,226B,LG TR558-0239,ABS,HB,CL	1	
1-7	AA64-40460A	WINDOW-REMOCON	-,226B,LG-41338,ABS,HB,-,-	1	
1-8	AA64-10715A	KNOB-CONTROL	-,564B,-,ABS,HB,BLK	1	
1-9	6002-000514	SCREW-TAPPING	RH,+,2,M4,L15,ZPC(BLK),SWRCH18	1	
1-10	3001-001072	SPEAKER	5W,16ohm,90dB,180Hz	1	
1-11	6002-000514	SCREW-TAPPING	RH,+,2,M4,L15,ZPC(BLK),SWRCH18	2	
2	AA03-10028M	CRT-COLOR	-,A53QCA891X001(B),+380mG,22,	1	
2-1	AA65-30107A	CLAMP-D,	COILNYLON 66,V2,NTR,-,20-22 INCH,-	4	
2-2	AA27-20004P	COIL-DEGAUSSING	-,22,18.9ohm,30T,L2480,E	1	
2-3	3704-001105	SOCKET-CRT	11P,20PI,26.5PI,NI,-	1	
3	AA64-31114C	CABINET-BACK	-,564B,-,HIPS,V2,BLK,-,-	1	
3-1	AA60-10050T	SCREW-TAPPING	RH,+,2S,M4,L20,ZPC(BLK),SWRCH1	4	
3-2	AA42-10001V	ANT-ROD	-,3S,620mm,BRN,UL/CSA	1	
3-3	AA64-60052Q	INLAY-BACK	SCT57B,SCART,PS SHEET,T0.5,BLK	1	
4	AA61-20284A	HOLDER	-,P-CORD,PPVO,BLK,KE-002	1	

6-2 CK565BSR3S/NWT



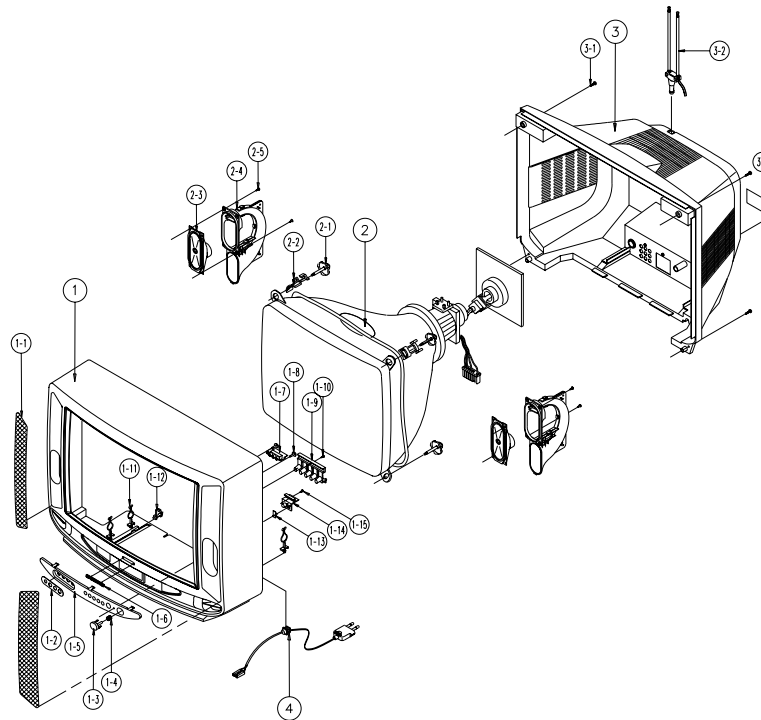
No	Code No	Description	Specification	Q'ty	Remark
1	AA91-10375D	ASSY-CABINET,FRONT	DP,CK565BSR,BK708P MLB,HB,BLK	1	
	AA64-31117U	CABINET-FRONT	-,CK565BSR,BK708P MLB,HIPS,HB,BL-	1	
1-1	AA64-70010B	BADGE-BRAND	AL,SS R2000 25,SILVER,L50,-,-,	1	
1-2	AA64-60441D	INLAY-AV	SCT57B,S/T ML,PS,T0.3,BLK,-,-	1	
1-3	AA64-10712A	KNOB-POWER	-,564,565,566B,-,ABS,HB,BLK	1	
1-4	AA61-60005C	SPRING-CS	-,SUS304,0.4,OD6.3,H6.5,N5.5,-	1	
1-5	AA95-00027A	ASSY-SOUND	-,S51A,CK,MONO/LINE-STEREO,	1	
1-6	AA61-40053A	STOPPER-PCB	ALL MODEL,HIPS HB,WHT,HB,-,-	1	
1-7	AA65-30105A	CLAMP-WIRE	NYLON 66,V2,NTR,15MM,ALL MODEL	2	
1-8	AA64-40461A	INDICATOR-LED	-,226B,LG TR558-0239,ABS,HB,CL	1	
1-9	AA64-40460A	WINDOW-REMOCON	-,226B,LG-41338,ABS,HB,-,-	1	
1-10	6002-000514	SCREW-TAPPING	RH,+,2,M4,L15,ZPC(BLK),SWRCH18	1	
1-11	3001-001038	SPEAKER	6W,16ohm,92dB,140Hz	2	
1-12	6002-000514	SCREW-TAPPING	RH,+,2,M4,L15,ZPC(BLK),SWRCH18	4	
1-13	AA95-00031A	ASSY-PCB,A/V FRONT	DP,22,77,02,3399,S51A,-,-,-	1	
1-14	AA60-10002A	SCREW-TAPPING	RH,+,M4,L12,ZPC(YEL),-,OD14	2	
1-15	AA64-10719A	KNOB-CONTROL	-,565B,-,ABS,HB,BLK	1	
1-16	6002-000514	SCREW-TAPPING	RH,+,2,M4,L15,ZPC(BLK),SWRCH18	1	
2	AA03-10028M	CRT-COLOR	-,A53QCA891X001(B),+380mG,22,	1	
2-1	AA65-30107A	CLAMP-D,COIL	NYLON 66,V2,NTR,-,20-22 INCH,-	4	
2-2	AA27-20004P	COIL-DEGAUSSING	-,22,18.9ohm,30T,L2480,E	1	
2-3	3704-001105	SOCKET-CRT	11P,20PI,26.5PI,NI,-	1	
3	AA64-31118C	CABINET-BACK	-,565B,-,HIPS,V2,BLK,-,-	1	
3-1	AA60-10050T	SCREW-TAPPING	RH,+,2S,M4,L20,ZPC(BLK),SWRCH1	4	
3-2	AA42-10001V	ANT-ROD	-,3S,620mm,BRN,UL/CSA	1	
3-3	AA64-60052C	INLAY-BACK	-,SCT57A,C SCART(2),PS,T0.5,BL	1	
3-4	6002-000514	SCREW-TAPPING	RH,+,2,M4,L15,ZPC(BLK),SWRCH18	1	
4	AA61-20284A	HOLDER	-,P-CORD,PP,VO,BLK,KE-002	1	

6-3 CK566BSX3S/NWT



No	Code No	Description	Specification	Q'ty	Remark
1	AA91-10381E	ASSY-CABINET,FRONT	DP,CK566BSX,BK708P MLB,HB,BLK	1	
	AA64-00071E	CABINET-FRONT	-,CK566BSXR,BK708P MLB,HIPS,HB,B,-,-	1	
1-1	AA64-60441D	INLAY-AV	SCT57B,S/T ML,PS,T0.3,BLK,-,-	1	
1-2	AA64-70010B	BADGE-BRAND	AL,SS R2000 25,SILVER,L50,-,-	1	
1-3	AA64-10712A	KNOB-POWER	-,564,565,566B,-,ABS,HB,BLK	1	
1-4	AA61-60003T	SPRING-CS	-,SUS304,0.5,OD7,H13.5,N5,-,-	1	
1-5	AA65-30105A	CLAMP-WIRE	NYLON 66,V2,NTR,15MM,ALL MODEL	2	
1-6	AA61-40053A	STOPPER-PCB	ALL MODEL,HIPS HB,WHT,HB,-,-	1	
1-7	AA64-40461A	INDICATOR-LED	-,226B,LG TR558-0239,ABS,HB,CL	1	
1-8	AA64-40460A	WINDOW-REMOCON	-,226B,LG-41338,ABS,HB,-,-	1	
1-9	6002-000514	SCREW-TAPPING	RH,+,2,M4,L15,ZPC(BLK),SWRCH18	1	
1-10	3001-001038	SPEAKER	6W,16ohm,92dB,140Hz	2	
1-11	6002-000514	SCREW-TAPPING	RH,+,2,M4,L15,ZPC(BLK),SWRCH18	4	
1-12	AA95-00031A	ASSY-PCB,A/V FRONT	DP,22,77,02,3399,S51A,-,-,-	1	
1-13	AA60-10002A	SCREW-TAPPING	RH,+,M4,L12,ZPC(YEL),-,OD14	2	
1-14	AA64-10713A	KNOB-CONTROL	-,226B,-,ABS,HB,BLK	1	
1-15	6002-000514	SCREW-TAPPING	RH,+,2,M4,L15,ZPC(BLK),SWRCH18	1	
2	AA03-10028M	CRT-COLOR	-,A53QCA891X001(B),+380mG,22,	1	
2-1	AA65-30107A	CLAMP-D,COIL	NYLON 66,V2,NTR,-,20-22 INCH,-	4	
2-2	AA60-10050R	SCREW-ASSY	WC,HH,+,M5,L31.5,SWRCH18A,ZPC(4	
2-3	3704-001105	SOCKET-CRT	11P,20PI,26.5PI,NI,-	1	
3	AA64-31111C	CABINET-BACK	-,566B,567B,-,HIPS,V2,BLK,-,-	1	
3-1	AA42-10001V	ANT-ROD	-,3S,620mm,BRN,UL/CSA	1	
3-2	AA60-10050T	SCREW-TAPPING	RH,+,2S,M4,L20,ZPC(BLK),SWRCH1	4	
3-3	AA64-60052C	INLAY-BACK	-,SCT57A,C SCART(2),PS,T0.5,BL	1	
5	AA61-20284A	HOLDER	-,P-CORD,PP,VO,BLK,KE-002	1	

6-4 CK568BSX3S/NWT



No	Code No	Description	Specification	Q'ty	Remark
1	AA91-10376E	ASSY-CABINET,FRONT	DP,CK-568BSXR,BK-708P TVI,HB,BLK	1	
	AA64-31130F	CABINET-FRONT	-,568B,BK708P CIS,HIPS,HB,BLK,	1	
1-1	AA63-50338A	GRILLE-WOOFER	-,568B,-,SECC,T0.5,BLK,-	2	
1-2	AA64-60441B	INLAY-AV	SCT57B,S/T ML,PS,T0.3,KSP213,-	1	
1-3	AA64-10725C	KNOB-POWER	-,568B,-,ABS,HB,MET BRN	1	
1-4	AA61-60003E	SPRING-CS	-,SUS304,0.5,OD8,H9,N5,-,-,-	1	
1-5	AA64-00118B	DECORATION-FRONT	-,CK-568BSXR,KSP213 ML,HIPS,VO,L/G-	1	
1-6	AA64-70010B	BADGE-BRAND	AL,SS R2000 25,SILVER,L50,-,-,-	1	
1-7	AA95-00031A	ASSY-PCB,A/V FRONT	DP,22,77,02,3399,S51A,-,-,-	1	
1-8	AA60-10002A	SCREW-TAPPING	RH,+,M4,L12,ZPC(YEL),-,OD14	2	
1-9	AA64-10726A	KNOB-CONTROL	-,568B,-,ABS,HB,M/BROWN	1	
1-10	6002-000514	SCREW-TAPPING	RH,+,2,M4,L15,ZPC(BLK),SWRCH18	1	
1-11	AA65-30105A	CLAMP-WIRE	NYLON 66,V2,NTR,15MM,ALL MODEL	2	
1-12	AA61-40053A	STOPPER-PCB	ALL MODEL,HIPS HB,WHT,HB,-,-	1	
1-13	AA64-40469A	INDICATOR-LED	-,569B,ACRYL,HB,-,CLR	1	
1-14	AA64-40468A	WINDOW-REMOCON	-,568B,-,ABS,HB,-,LG-41338	1	
1-15	6002-000514	SCREW-TAPPING	RH,+,2,M4,L15,ZPC(BLK),SWRCH18	1	
2	AA03-10028M	CRT-COLOR	-,A53QCA891X001(B),+380mG,22,	1	
2-1	AA60-10050R	SCREW-ASSY	WC,HH,+,M5,L31.5,SWRCH18A,ZPC(4	
2-2	AA65-30107A	CLAMP-D,COIL	NYLON 66,V2,NTR,-,20-22 INCH,-	4	
2-3	AA91-60307A	ASSY-HOLDER,SPK	DP,PP,AA9160290A,8ohm10W,568B,	1	
2-4		ASSY-HOLDER,SPK OPTION			
2-5	6002-000522	SCREW-TAPPING	TH,+,2,M4,L15,ZPC(BLK),SWRCH18	4	
3	AA64-31132C	CABINET-BACK	-,568B,-,HIPS,V2,BLK,-,-	1	
3-1	AA60-10050T	SCREW-TAPPING	RH,+,2S,M4,L20,ZPC(BLK),SWRCH1	4	
3-2	AA42-10001V	ANT-ROD	-,3S,620mm,BRN,UL/CSA	1	
3-3	AA64-60052C	INLAY-BACK	-,SCT57A,C SCART(2),PS,T0.5,BL	1	
4	AA61-20284A	HOLDER	-,P-CORD,PP,VO,BLK,KE-002	1	