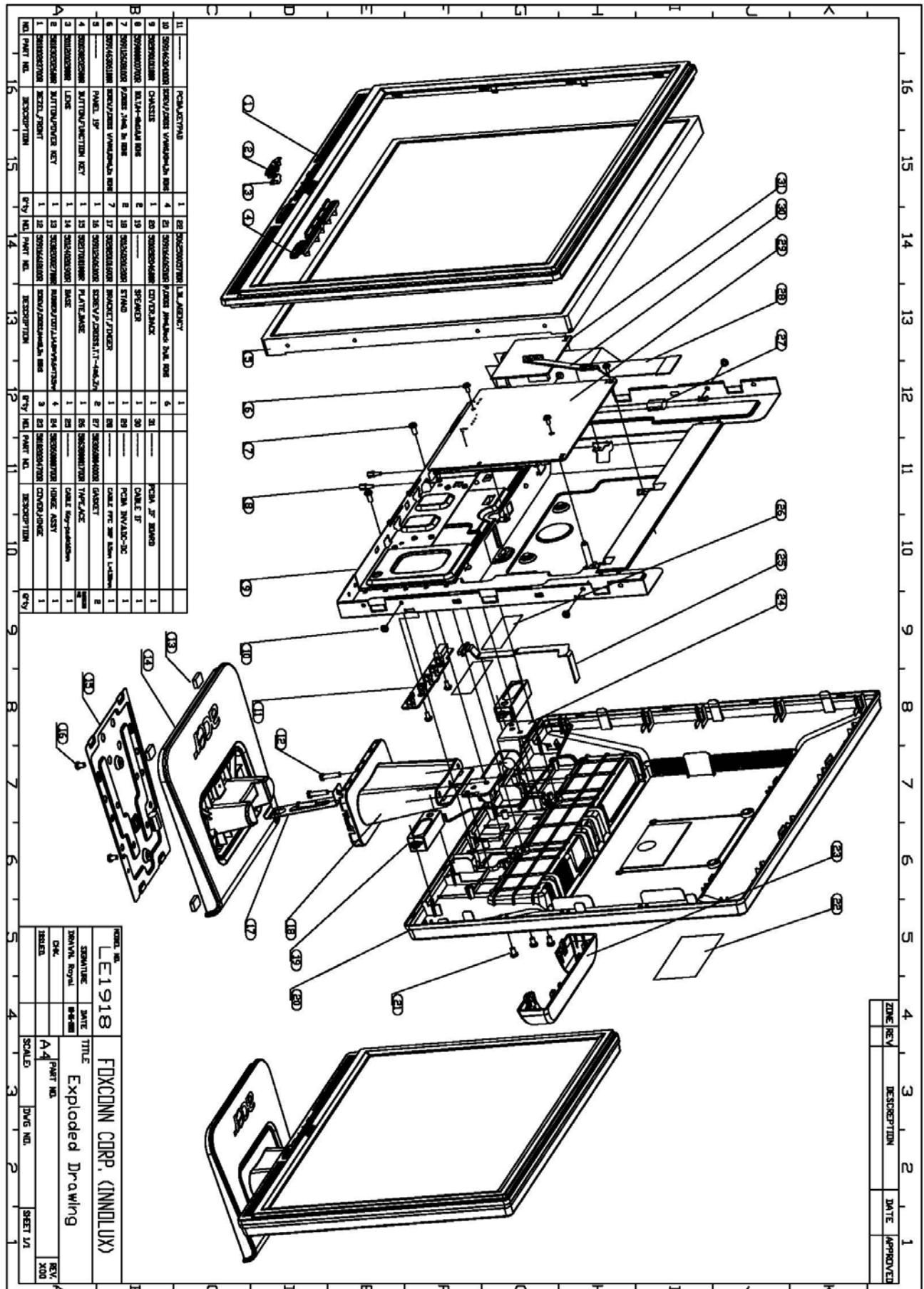


Chapter 4- Disassembly & Assembly

1. Exploded Diagram



Attachment 1- Bill of Material

PCBA P+I

ITEM	PART NUMBER	DESCRIPTION	Q'TY	LOCATION
1	412140002380R	IC LTV817M-PR VDE (LITE-ON)	1	IC801
		P=10mm ROHS		
1.1	412140001390R	IC EL817M-B ROHS (EVERLIGHT	1	
2	410500072270R	XSTR AOP605 N&P-CH PDIP-8(AOS	2	U501,U502
3	412000225280R	IC TDA7496L AMPLIFIER(ST)ROHS	1	U701
		W/DC VOLUME CONTROL/POWERDIP		
3.1	412000225020R	IC TDA7496LK DIP-20(UTC)ROHS	1	
4	411050005020R	DIO BRDG BL4-06-BF52-LF	1	D801
		600V/4A FRONTIER ROHS		
5	418105058960R	CAP CD SL 5pF 3KV D,ST, ROHS	4	C524,C525,C526,C527
		CC45SL3FD050DYPN(TDK)		
6	420431014082R	CAP SEK 100uF/450V M,105°C CF	1	C805
		18x40(2.5),ROHS		
7	420421020102R	CAP EC 1000uF/10V M,105°C N-F	1	C812
		10x16(L-ESR) ROHS		
8	420426810210R	CAP SD 680uF/25V M 105°C F	2	C808,C826
		10x20 ROHS		
9	416202223610R	CAP MEY 2200pF 250V M Y2 Y5V	2	C801,C806
		P=7.5mm ROHS		
10	416202224610R	CAP MEY 2200pF 400V M Y,F10mm	1	C820
13	416204724610R	CAP MEY 4700pF 400V M Y,F10mm	1	C824
14	416194743011R	CAP MEX 0.47uF 275V K X2,F15	1	C804
15	425000010530R	COIL CHK 5uH 7.8X10 CHK-053 0	2	L802,L803
		181085R0L-LFR ROHS		
16	426000050070R	CHOKE L-FILTER 12mH LIN-007	1	L801
		ET-20		
17	426000090510R	XFMR 750u@1K,+ -8%,3m,113m,SPW-	1	T801
		051,DIP-11,NC-H0494-1 ROHS		
18	426000090490R	XFMR SW 93uH EEL19 DIP SPW-049	2	T501,T502
19	432009400701R	NTC 5Ω 4A 10ψ P=5mm, F ROHS	1	RT801
20	430613420290R	FUSE SLOW 2,250,Axial Lead,3.6	1	F801
		x10mm ROHS		
21	440149000110R	SKT AC 10A/250V U/C/V,	1	P801
		TU-301-SP-SRB-AD7		
21.1	440149000120R	SKT AC 10A/250V U/C/V,	1	
		CDJ-3D-B-6.0B		
22	430300600070R	HRN ASS'Y 6P 100mm UL1007#24	1	CN801
23	430637020020R	WFR. 2P P=3.5mm 90°4100-D02	4	CN501,CN502,CN503,CN504
24	430631040080R	WFR. 4P 2.0mm R/A HF5604E	1	CN701
25	442299001130R	CON,PHONE JACK GREEN R/A,1P,PB	1	P701
		J303-2-A,ROHS		
26	511110000101R	HOT-MELT ADHESIVES (#526)	0.003	
30	418247233020R	CAP CD X7R 4700pF 1KV K,W/O FORMING	1	C803
27	735100005400R	ASSY,H/S SRF5-04CT/8-10CT,LE1700	1	
28	411090024040R	SCHTKY SRF1040CM 40V/10A ITO22OAB(MOSPEC)ROHS	1	D805
28.1	411090015020R	SCHTKY SRF5-04CT-LF ITO-220AB(FEC) ROHS	1	

28.2	411090025040R	SCHTKY SRF1045CM 45V/10A ITO22OAB(MOSPEC)ROHS	1	
29	411090009040R	SCHTKY SRF10100C 100V/10A(MOSPEC)ITO-220 ROHS	1	D803
29.1	411090016020R	SCHTKY SRF8-10CT-LF ITO-220AB (FEC) ROHS	1	
30	507200003800	HEATSINK,56x20xt10mm LE1904/05	1	
31	509112306100R	SCREW,P,CROSS,T.T-3*6,Zn	2	
32	735100005900R	ASSY,H/S TOP246Y, LE1X09 ROHS	1	
33	412000379270R	IC TOP246YN,TO-220-7C(POWER INTEGRATION)ROHS	1	IC802
34	507200003700R	HEATSINK,46x20xt10mmLE1704/05	1	
35	509112306100R	SCREW,P,CROSS,T.T-3*6,Zn	1	
36	790461440A00R	PCBA,PWR&INV./B,SMD,LE1918-AG0	1	
37	410500045210R	XSTR PMBT3904 NPN 200MA,40V	1	Q801
		SOT23(PHILIPS) ROHS		
37.1	410500045140R	XSTR MMBT3904LT1G NPN 200MA	1	
		40V SOT23 ROHS (ON)		
37.2	410500045130R	XSTR MMBT3904 NPN SOT-23(INFIN EON)ROHS	1	
38	410500050210R	XSTR 2N7002,N-CH FET SOT-23 (PHILIPS) ROHS	5	Q501,Q502,Q503,Q504,Q505
38.1	410500050130R	XSTR SN7002 N-C SOT-23(INFINEON) ROHS	5	
39	411020026210R	DIO BAV99 350mW 70V SOT-23(PHI	8	D501,D502,D503,D504,D505, D506,D507,D508
39.1	411020026020R	DIO BAV99-LF 350mW 70V SOT-23 ROHS (FEC)	8	
40	411023004021R	DIO SN4148-LF 75V/0.15A SMD 1206 (FEC) ROHS	5	D509,D510,D511,D512,D515
40.1	411020046410R	DIO MW4148-G 75V/0.15A (MMC) DO-213AA ROHS	5	
41	411090020410R	SCHTKY SKS20-04AT-G 40V/2A THIN SMA (MMC) ROHS	2	D513,D514
42	411150391950R	ZENER 9.1V MTZS05-9.1-G SOD-123 (MITSUBISHI) ROHS	1	ZD801
42.1	411101191920R	ZENER BZV55-B9V1 SOD80C(PHILIPS) ROHS	1	
43	411150356950R	ZENER 5.6V MTZS05-5.6-G,ROHSSOD-123 (MMC)	1	ZD803
43.1	411101156950R	ZENER BZV55-C5V6 SOD80C(PHILIPS) ROHS	1	
43.2	411100656950R	ZENER 5.6V ZMM55-C5V6-LF DO213	1	
44	411101116050R	ZENER BZV55-C16 SOD80C(PHILIPS	1	ZD804
44.1	411150316050R	ZENER 16V MTZS05-16-G SOD-123 (MITSUBISHI) ROHS	1	
44.2	411100616051R	ZENER 16V ZMM5246B-LF DO-213AA	1	
45	412000354630R	IC OZ9910GN SOP16 (O2 MICRO)	1	IC501
46	414904010050R	RES SMD (1206) 10Ω J,RT ROHS	2	R802,R806
47	414916010150R	RES SMD (0603) 100Ω J,RT ROHS	2	R704,R703
48	414904100010R	RES SMD (1206) 100Ω F,RT	1	R809
49	414908010250R	RES SMD (0805) 1KΩ J,RT ROHS	5	R813,R814,R815,R708,R709
50	414908010350R	RES SMD (0805) 10KΩ J,RT ROHS	3	R808,R819,R827
51	414916010350R	RES SMD (0603) 10KΩ J,RT ROHS	4	R532,R533,R534,R535
52	414916010410R	RES SMD (0603) 100K F,RT ROHS	1	R508

53	414916010550R	RES SMD (0603) 1M Ω J,RT ROHS	6	R505,R515,R517,R519,R521, R529
54	414904010550R	RES SMD (1206) 1M Ω J,RT ROHS	2	R820,R821
55	414916120110R	RES SMD (0603) 1.2K Ω F,RT	2	R510,R512
56	414908120210R	RES SMD (0805) 12K F RT ROHS	1	R817
57	414916015350R	RES SMD (0603) 15K Ω J,RT	2	R701,R702
58	414916180310R	RES SMD (0603) 180K Ω F,RT	1	R526
59	414916130310R	RES SMD (0603) 130K Ω F,RT	1	R523
60	414908020150R	RES SMD (0805) 200 Ω J,RT ROHS	1	R829
61	414908330110R	RES SMD (0805) 3.3K Ω F,RT	1	R818
62	414916330410R	RES SMD (0603) 3.3M F RT	1	R527
63	414908033550R	RES SMD(0805) 3.3M Ω J,RT,ROHS	4	R801,R805,R822,R823
64	414908430110R	RES SMD (0805) 4.3K Ω F,RT	2	R502,R504
65	414916390110R	RES SMD (0603) 3.9K Ω F,RT	2	R506,R507
66	414916047250R	RES SMD (0603) 4.7K Ω J,RT	2	R705,R706
67	414908047450R	RES SMD (0805) 470K Ω J,RT	1	R825
68	414908510110R	RES SMD (0805) 5.1K Ω F,RT	1	R810
69	414916510210R	RES SMD (0603) 51K Ω F,RT ROHS	1	R811
70	414908051450R	RES SMD (0805) 510K Ω J,RT	3	R803,R807,R824
71	414908068950R	RES SMD (0805) 6.8 Ω J RT	2	R812,R816
72	414916910210R	RES SMD (0603) 91K Ω F,RT	1	R522
73	419301023560R	C SMD(0603) NPO 1000PF/25V J	1	C504
74	419311040060R	C SMD(0603) X7R 0.1 μ F/50V K	9	C821,C531,C532,C533,C534, C503,C509,C701,C710
75	419341054670R	C SMD(0805) Y5V 1 μ F/16V Z ROHS	1	C708
76	419341053670R	C SMD(0805) Y5V 1 μ F/25V Z ROHS	2	C528,C505
77	419302210360R	C SMD(0603) NPO 220PF/50V G	1	C529
78	419312220060R	C SMD(0603) X7R 2200PF/50V K	1	C507
79	419311030060R	C SMD(0603) X7R 0.01 μ F/50V K	1	C508
80	419342253670R	C SMD(0805) Y5V 2.2 μ F/25V Z	2	C502,C511
81	419314720060R	C SMD(0603) X7R 4700PF/50V K	5	C506,C711,C712,C713,C714
82	414916100110R	RES SMD (0603) 1K Ω F,RT ROHS	1	R707
83	430612440460R	FUSE FST 4A/125V 1206 U/C/S/V, ROHS,C1Q4	1	F501
83.1	430612740460R	FUSE FST 4A/24V 1206 U/C/S/V 466 004	1	
84	414916020410R	RES SMD (0603) 200K Ω F,RT ROHS	1	R524
85	414916590010R	RES SMD (0603) 590 Ω F,RT ROHS	2	R509,R511
86	414916560010R	RES SMD (0603) 560 Ω F,RT ROHS	2	R530,R531
87	414916604310R	RES SMD (0603) 604K Ω F,RT	1	R539
88	414916000050R	RES SMD (0603) 0 Ω J,RT ROHS	1	R537
89	790461410A00R	PCBA,PWR&INV./B,AI,LE1918-AG0	1	
90	790461450A00R	PCBA,PWR&INV./B,AI/A, LE1918-AG0, ROHS	1	
91	415130680540R	RES CF 1/2W 68 Ω J,AT ROHS	1	R804
92	415340101540R	RES MOF 1W 100 Ω J,AT MINI	1	R828
93	414870305540R	RES MG HV 1/2Ws 3M Ω 3KV J,AT	2	R501,R503
94	411020055330R	DIO MUR1100ERL AXIAL LEAD(ON)	1	D804
94.1	411032006020R	DIO FR10-10-LF 1000V/1A AT(FRO NTER)ROHS	1	
95	411020052020R	DIO A02-LF 200V/1A R1 (FEC)	1	D806
96	411022003210R	DIO 1N4148 75V/0.2A AT (PHIL)	1	D809

96.1	411022003020R	DIO 1N4148-LF 75V/0.15A AT (FEC) ROHS	1	
97	411022020090R	DIO P6KE200A 600W/100A,DO-15(PANJIT)	1	ZD802
97.1	411022020020R	DIO P6KE200A-LF 600W/100A DO-1 5(FRONTIER)ROHS	1	
98	506140005700R	LABEL,BARCODE,BLANK,33x7mm, ROHS,FOR PCB	1	
99	432002200160R	BEAD CORE BF30TA-3.5x9x0.8 AT	1	B801
100	430405007590R	JMPR 7.5mm D=0.6mm,AT ROHS	8	J504,J509,J701,J702,J801, J812,J813,J814
101	430405010090R	JMPR 10mm D=0.6mm,AT ROHS	10	J503,J505,J506,J802,J804, J806,J807,J809,J810,J703
102	430405012590R	JMPR 12.5mm D=0.6mm,AT ROHS	5	J704,J803,J808,J811,J816
103	430405015090R	JMPR 15mm D=0.6mm,AT ROHS	1	J510
104	430405017590R	JMPR 17.5mm D=0.6mm,AT ROHS	1	J502
105	430405020090R	JMPR 20mm D=0.6mm,AT ROHS	3	J508,J805,J815
106	415020330540R	RES CF 1/4W 33Ω J,AT MINI	2	R536,R538
107	490461400100R	PCB,PWR&INV./B, LE1918-XG0	1	
108	790461460A00R	PCBA,PWR&INV./B,AI/R, LE1918-AG0, ROHS	1	
109	418210227030R	CAP CD X7R 1000pF 500V K VT	2	C802,C811
110	418310413630R	CAP CD Y5V 0.1uF 50V Z,VT	2	C817,C822
111	416231041530R	CAP MEB 0.1uF 100V J,(RSB),VT RSBEC3100DQJ ROHS	1	C816
112	420424710260R	CAP SD 470uF/25V M 105°C ST 10x16,ROHS	3	C810,C522,C702
113	418147038530R	CAP CD NPO 47pF 1KV J,VT ROHS	1	C813
114	420434700230R	CAP EC 47uF 25V M,105°C VT 5x11 ROHS REV:A	4	C814,C815,C818,C819
115	410072013370R	XSTR 2SC1815-GR (T2SPF.T) VT (TOSHIBA) ROHS REV:A	1	Q802
115.1	410072013210R	XSTR 2PC1815GR*I VT (PHILIPS)	1	
115.2	410072013150R	XSTR UTC2SC1815L-GR NPN TO92,ROHS(UTC)	1	
116	412022002840R	IC TLV431ALP TO-92 1%,VT (ON)	1	IC803
116.1	412022002240R	IC KA431AZ 1%,VT (FAIRCHILD)	1	
116.2	412022002300R	IC AP431VL TO-92 1% VT (ATC)	1	
117	420434710431R	CAP EC 470uF 16V M,105°C VT8x12,	3	C704,C705,C709
118	420431010431R	CAP EC 100uF 16V M,105°C VT5x11	1	C715

ITEM	PART NUMBER	DESCRIPTION	Q'TY	LOCATION
1	790461320400R	PCBA,IF BOARD,OTHRs,LE1918-4G0	1	
2	420432200260R	CAP EC 22uF 25V M,105°C ST,5x11	5	C108,C111,C140,C129,C130
3	420431010461R	CAP EC 100uF 16V M,105°C ST5x11(SK)	2	C101,C102
4	420431000260R	CAP EC 10uF 25V M,105°C ST5x11	2	C133,C142
5	432008010350R	XTAL 24.000MHz 16pF HC-49US30PPM,DIP	1	X101
6	430631090040R	WAFER 2.0mm 9P 180°,W/O PIN7,HF5509E	1	CN101
7	440819015030R	CON,D-SUB,FEM.15P RA W/O SCREW DZ11AA1-H5W6-4F	1	CN102
8	430631080130R	WAFER 2x4P 2.0mm,200PHD-2*4ST	1	CN104
9	790461340400R	PCBA,IF BOARD,SMD, LE1918-4G0	1	
10	419301500560R	C SMD(0603) NPO 15PF/50V J	2	C144,C145
11	419301010560R	C SMD(0603) NPO 100PF/50V J	3	C131,C135,C141

12	419311040060R	C SMD(0603) X7R 0.1uF/50V K	12	C103,C104,C109,C110,C113, C128,C132,C136,C137,C138, C139,C143
13	419341054670R	C SMD(0805) Y5V 1uF/16V Z ROHS	2	C112,C115
14	419302200560R	C SMD(0603) NPO 22PF/50V J	1	C127
15	419301200560R	C SMD(0603) NPO 12PF/50V J	1	C126
16	419314730060R	C SMD (0603) X7R 0.047uF 50V,K	6	C117,C118,C119,C120,C121, C122
17	414916000050R	RES SMD (0603) 0Ω J,RT ROHS	10	R111,R114,R117,R125,R135, R136,R157,R161,R185,R196
18	414916010150R	RES SMD (0603) 100Ω J,RT ROHS	13	R108,R123,R131,R132,R168, R169,R172,R173,R175,R176, R177,R124,R126
19	414916100010R	RES SMD (0603) 100Ω F,RT ROHS	6	R112,R113,R115,R116,R118, R119
20	414916010250R	RES SMD (0603) 1KΩ J,RT ROHS	1	R158
21	414916010350R	RES SMD (0603) 10KΩ J,RT ROHS	4	R102,R162,R163,R200
22	414916015350R	RES SMD (0603) 15KΩ J,RT	2	R133,R183
23	414916010450R	RES SMD (0603) 100KΩ J,RT	1	R105
24	414916020250R	RES SMD (0603) 2KΩ J,RT ROHS	2	R127,R128
25	414916020350R	RES SMD (0603) 20KΩ J,RT ROHS	1	R104
26	414916033350R	RES SMD (0603) 33KΩ J,RT ROHS	1	R134
27	414916390010R	RES SMD (0603) 390Ω F,RT ROHS	2	R174,R178
28	414916047150R	RES SMD (0603) 470Ω J,RT ROHS	2	R179,R180
29	414916047250R	RES SMD (0603) 4.7KΩ J,RT	31	R101,R201,R129,R130,R137, R138,R139,R140,R141,R144, R145,R146,R147,R148,R149, R152,R153,R154,R155,R165, R166,R188,R189,R190,R191, R192,R193,R194,R195,R202, R198
30		ROHS		
31	414916750910R	RES SMD (0603) 75Ω F,RT ROHS	3	R120,R121,R122
32	410500044290R	XSTR AP2301GN P-CH SOT23 (APEC	1	Q101
32.1	410500044120R	XSTR SI2301BDS-T1-E3 P-CH	1	
		SOT23 (VISHAY) ROHS		
33	410500046210R	XSTR PMBT3906 PNP 200MA,40V	4	Q107,Q108,Q113,Q114
		SOT23(PHILIPS) ROHS		
33.1	410500046180R	XSTR MMBT3906LT1G PNP 200mA	4	
		40V SOT23 (ON) ROHS		
33.2	410500046130R	XSTR MMBT3906 PNP SOT-23(INFIN	4	
		EON)ROHS		
34	410500045210R	XSTR PMBT3904 NPN 200MA,40V	4	Q103,Q111,Q112,Q115
		SOT23(PHILIPS) ROHS		
34.1	410500045140R	XSTR MMBT3904LT1G NPN 200MA	4	
		40V SOT23 ROHS (ON)		
34.2	410500045130R	XSTR MMBT3904 NPN SOT-23(INFINEON)	4	
35	412000398690R	IC FS8860-33PJ SOT-223 (FORTUNE)	1	U101
35.1	412000372020R	IC LD1117AL-3.3V-A SOT-223(UTC	1	
36	412000008481R	IC AT24C02AN-10SU-2.7 SOP8 2K	1	U103
		(ATMEL) ROHS		
36.1	412000010280R	IC M24C02-WMN6TP SO8 2K (ST)	1	
36.2	412000361990R	IC CAT24WC02W-TE13 SOIC-8 ROHS	1	
		(CATALYST)		

37	412000411140R	IC RTD2023L LQFP48(REALTEK)ROHS	1	U104
38	412000279480R	IC AT24C04N-10SU-2.7 SOP8 4K(A	1	U106
		TMEL)ROHS		
38.1	412000279280R	IC M24C04-WMN6TP4K SOP8 (ST)	1	
38.2	412000279990R	IC CAT24WC04W-TE13 (CATALYST)	1	
39	411020026210R	DIO BAV99 350mW 70V SOT-23(PHI	4	TVS101,TVS102,TVS103,TVS104
		ROHS		
39.1	411020026020R	DIO BAV99-LF 350mW 70V SOT-23	4	
		ROHS (FEC)		
40	411150356950R	ZENER 5.6V MTZS05-5.6-G,ROHS	5	ZD101,ZD102,ZD103,ZD104
		SOD-123 (MMC)		ZD105
40.1	411101156950R	ZENER BZV55-C5V6 SOD80C(PHILIP	5	
		S) ROHS		
40.2	411100656950R	ZENER 5.6V ZMM55-C5V6-LF DO213	5	
		AA (FEC)ROHS		
41	411020047020R	DIO BAV70-LF 70V SOT23 (FEC)	1	D101
41.1	411020047210R	DIO BAV70 85V SOT23 (PHILIPS)	1	
42	411023004021R	DIO SN4148-LF 75V/0.15A SMD	2	D106,D107
		1206 (FEC) ROHS		
42.1	411020046410R	DIO MW4148-G 75V/0.15A (MMC)	2	
		DO-213AA ROHS		
43	432002360012R	BEAD CORE SMD(0805)60Ω 800mA	2	FB101,FB102
		GBK201209T-600Y-N ROHS		
44	444099030030R	CON, SMD 1.0mm 30PIN ROHS AL2309-A0G1Z	1	CN103
45	412000399690R	IC FS8860-18PJ SOT-223 (FORTUNE)	1	U102
45.1	412000330020R	IC LD1117AL-1.8V-A SOT223(UTC)	1	
46	490461300100R	PCB,INTERFACE, LE1918-XG0 ROHS	1	PCB
47	735110004200R	ASSY,MCU&PROGRAM, LE1918-4G0	1	U105
48	412000411040R	IC MTV512GMG LQFP48(MYSON)ROHS	1	U105
49	629030004200R	PROGRAM, LE1918-4G0 ROHS	1	
50	506390180100	LABEL,PROGRAM LE1501-030	1	

PCBA IF

ITEM	PART NUMBER	DESCRIPTION	Q'TY	LOCATION
1	419301500560R	C SMD(0603) NPO 15PF/50V J	2	C144,C145
2	419301010560R	C SMD(0603) NPO 100PF/50V J	3	C131,C135,C141
3	419311040060R	C SMD(0603) X7R 0.1uF/50V K	12	C103,C104,C109,C110,C113,C128, C132,C136,C137,C138,C139,C143
4	419341054670R	C SMD(0805) Y5V 1uF/16V Z ROHS	2	C112,C115
5	419302200560R	C SMD(0603) NPO 22PF/50V J	1	C127
6	419301200560R	C SMD(0603) NPO 12PF/50V J	1	C126
7	419314730060R	C SMD (0603) X7R 0.047uF 50V,K	6	C117,C118,C119,C120,C121,C122
8	414916000050R	RES SMD (0603) 0Ω J,RT ROHS	10	R111,R114,R117,R125,R135, R136,R157,R161,R185,R196
9	414916010150R	RES SMD (0603) 100Ω J,RT ROHS	13	R108,R123,R131,R132,R168, R169,R172,R173,R175,R176, R177,R124,R126
10	414916100010R	RES SMD (0603) 100Ω F,RT ROHS	6	R112,R113,R115,R116,R118,R119
11	414916010250R	RES SMD (0603) 1KΩ J,RT ROHS	1	R158
12	414916010350R	RES SMD (0603) 10KΩ J,RT ROHS	4	R102,R162,R163,R200
13	414916015350R	RES SMD (0603) 15KΩ J,RT	2	R133,R183

14	414916010450R	RES SMD (0603) 100K Ω J,RT	1	R105
15	414916020250R	RES SMD (0603) 2K Ω J,RT ROHS	2	R127,R128
16	414916020350R	RES SMD (0603) 20K Ω J,RT ROHS	1	R104
17	414916033350R	RES SMD (0603) 33K Ω J,RT ROHS	1	R134
18	414916390010R	RES SMD (0603) 390 Ω F,RT ROHS	2	R174,R178
19	414916047150R	RES SMD (0603) 470 Ω J,RT ROHS	2	R179,R180
20	414916047250R	RES SMD (0603) 4.7K Ω J,RT	31	R101,R201,R129,R130,R137, R138,R139,R140,R141,R144, R145,R146,R147,R148,R149, R152,R153,R154,R155,R165, R166,R188,R189,R190,R191, R192,R193,R194,R195,R202, R198
21	414916750910R	RES SMD (0603) 75 Ω F,RT ROHS	3	R120,R121,R122
22	410500044290R	XSTR AP2301GN P-CH SOT23 (APEC SOT23 (VISHAY)	1	Q101
22.1	410500044120R	XSTR SI2301BDS-T1-E3 P-CH	1	
23	410500046210R	XSTR PMBT3906 PNP 200MA,40V	4	Q107,Q108,Q113,Q114
		SOT23(PHILIPS) ROHS		
23.1	410500046180R	XSTR MMBT3906LT1G PNP 200mA	4	
		40V SOT23 (ON) ROHS		
23.2	410500046130R	XSTR MMBT3906 PNP SOT-23(INFINEON)	4	
24	410500045210R	XSTR PMBT3904 NPN 200MA,40V	4	Q103,Q111,Q112,Q115
		SOT23(PHILIPS) ROHS		
24.1	410500045140R	XSTR MMBT3904LT1G NPN 200MA	4	
		40V SOT23 ROHS (ON)		
24.2	410500045130R	XSTR MMBT3904 NPN SOT-23(INFINEON)	4	
25	412000398690R	IC FS8860-33PJ SOT-223 (FORTUNE)	1	U101
25.1	412000372020R	IC LD1117AL-3.3V-A SOT-223(UTC	1	
26	412000008481R	IC AT24C02AN-10SU-2.7 SOP8 2K	1	U103
		(ATMEL) ROHS		
26.1	412000010280R	IC M24C02-WMN6TP SO8 2K (ST)	1	
26.2	412000361990R	IC CAT24WC02W-TE13 SOIC-8 ROHS	1	
		(CATALYST)		
27	412000411140R	IC RTD2023L LQFP48(REALTEK)ROHS	1	U104
29	412000279480R	IC AT24C04N-10SU-2.7 SOP8 4K(ATMEL)	1	U106
29.1	412000279280R	IC M24C04-WMN6TP4K SOP8 (ST)	1	
29.2	412000279990R	IC CAT24WC04W-TE13 (CATALYST)	1	
30	411020026210R	DIO BAV99 350mW 70V SOT-23(PHI	4	TVS101,TVS102,TVS103,TVS104
		ROHS		
30.1	411020026020R	DIO BAV99-LF 350mW 70V SOT-23	4	
31	411150356950R	ZENER 5.6V MTZS05-5.6-G,ROHS	5	ZD101,ZD102,ZD103,ZD104,ZD105
		SOD-123 (MMC)		
31.1	411101156950R	ZENER BZV55-C5V6 SOD80C(PHILIPS)	5	
31.2	411100656950R	ZENER 5.6V ZMM55-C5V6-LF DO213AA(FEC)	5	
32	411020047020R	DIO BAV70-LF 70V SOT23 (FEC)	1	D101
32.1	411020047210R	DIO BAV70 85V SOT23 (PHILIPS)	1	
33	411023004021R	DIO SN4148-LF 75V/0.15A SMD	2	D106,D107
		1206 (FEC) ROHS		
33.1	411020046410R	DIO MW4148-G 75V/0.15A (MMC)	2	
		DO-213AA ROHS		

34	432002360012R	BEAD CORE SMD(0805)60Ω 800mA	2	FB101,FB102
		GBK201209T-600Y-N ROHS		
35	444099030030R	CON, SMD 1.0mm 30PIN ROHS	1	CN103
		AL2309-A0G1Z		
36	412000399690R	IC FS8860-18PJ SOT-223 (FORTUNE)	1	U102
36.1	412000330020R	IC LD1117AL-1.8V-A SOT223(UTC)	1	
37	490461300100R	PCB,INTERFACE, LE1918-XG0 ROHS	1	PCB
38	790461320400R	PCBA,IF BOARD,OTHRs,LE1918-4G0	1	
39	420432200260R	CAP EC 22uF 25V M,105°C ST,5x11	5	C108,C111,C140,C129,C130
40	420431010461R	CAP EC 100uF 16V M,105°C ST5x11(SK)	2	C101,C102
41	420431000260R	CAP EC 10uF 25V M,105°C ST5x11	2	C133,C142
42	432008010350R	XTAL 24.000MHz 16pF HC-49US30PPM,DIP	1	X101
43	430631090040R	WAFER 2.0mm 9P 180°,W/O PIN7,HF5509E,	1	CN101
44	440819015030R	CON,D-SUB,FEM.15P RA W/O SCREW DZ11AA1-H5W6-4F	1	CN102
45	430631080130R	WAFER 2x4P 2.0mm,200PHD-2*4ST	1	CN104
46	790461340400R	PCBA,IF BOARD,SMD, LE1918-4G0	1	
47	735110004200R	ASSY,MCU&PROGRAM, LE1918-4G0	1	U105
48	412000411040R	IC MTV512GMG LQFP48(MYSON)ROHS	1	U105
49	629030004200R	PROGRAM, LE1918-4G0 ROHS	1	
50	506390180100	LABEL,PROGRAM LE1501-030	1	

PCBA KEY PAD

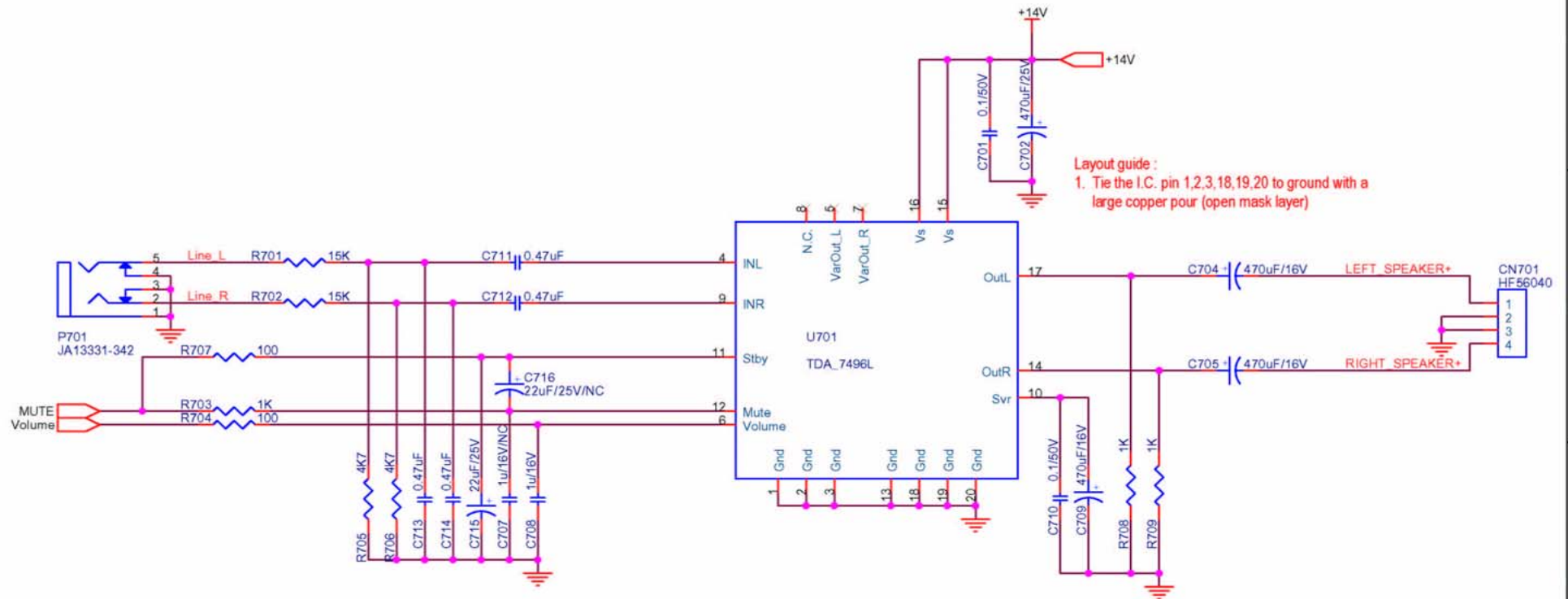
ITEM	P/N	DESCRIPTION	Q'TY	LOCATION
1	411070036990R	LED Y/G 2x4x5mm HTL-VGVY4R1N4- LC3.5,ROHS(HONGTONG)	1	LED101
2	430602980120R	SW TACT 160gf 1P,R/A H=4.3mm DIP SFKHHAL2420,ROHS	5	SW101,SW102,SW103,SW104 SW105
3	430631080030R	WFR 2.0mm 8P R/A HF5608E ROHS	1	CN107
4	490461500100R	PCB,KEY PAD,LE1918 ROHS	1	PCB

ITEM	P/N	DESCRIPTION	Q'TY	LOCATION
1	506431000300R	FILM,PE 500mmx900M ROHS	1.800	0
2	506380001000R	TAPE,WRAPPING TYPE,ACER LOGO 50000x72mm,	1.560	0
3	506390210200R	LABEL,CARTON(8ms), LE1918(EMEA/GC/PA)ROH	200.000	0
4	506440001200R	LABEL,BLANK,130x100mm,ROHS LE1501/LE1701	200.000	0
5	506250005701R	LBL,AGENCY(ENGLISH), LE1918(AL1917A) ROH	100.000	0
6	506040006200R	CUSHION,EPS-L, LE1918 ROHS	100.000	0
7	506040006210R	CUSHION,EPS-R, LE1918 ROHS	100.000	0
8	506020007700R	CARTON,ACER, LE1918 ROHS	100.000	0
9	506150004000R	PALLET,L1165xW1030xH120mm,ROHS LE1918	1.389	0
10	506038002100R	CARDBOARD,L1165xW1030xT4mm,ROHS LE1918	1.389	0
11	506039004900R	CORNER PAPER,2070x50x50xT5mm,ROHS LE1918	5.556	0
12	506039005000R	CORNER PAPER,870x50x50xT5mm,ROHS LE1918	5.556	0
13	506120000200R	BAG,PE AS 480x590xT0.05(PRINTED),ROHS LE	100.000	0
14	506120002510R	BAG,PLASTIC,W220xL280xT0.05mm,CYCLE PRIN	100.000	0
15	704000370620R	KIT,SERVICE PACK(EUR.), LE1918 ROHS	100.000	0
15.1	506120100101R	SEALED BAG NO.9 200x280x0.05mm,CYCLE PRI	100.000	0
15.2	506092001600R	CARD,WARRANTY(EUR.), LE1918 ROHS	100.000	0
15.3	506280101300R	GUIDE,QUICK SETUP, LE1918 ROHS	100.000	0
15.4	506070102500R	MNL USER'S(CD), LE1918 ROHS	100.000	0
16	453030300120R	CABLE,AUDIO 1P 6FT BLACK/GREEN CP03B06P0	100.000	0

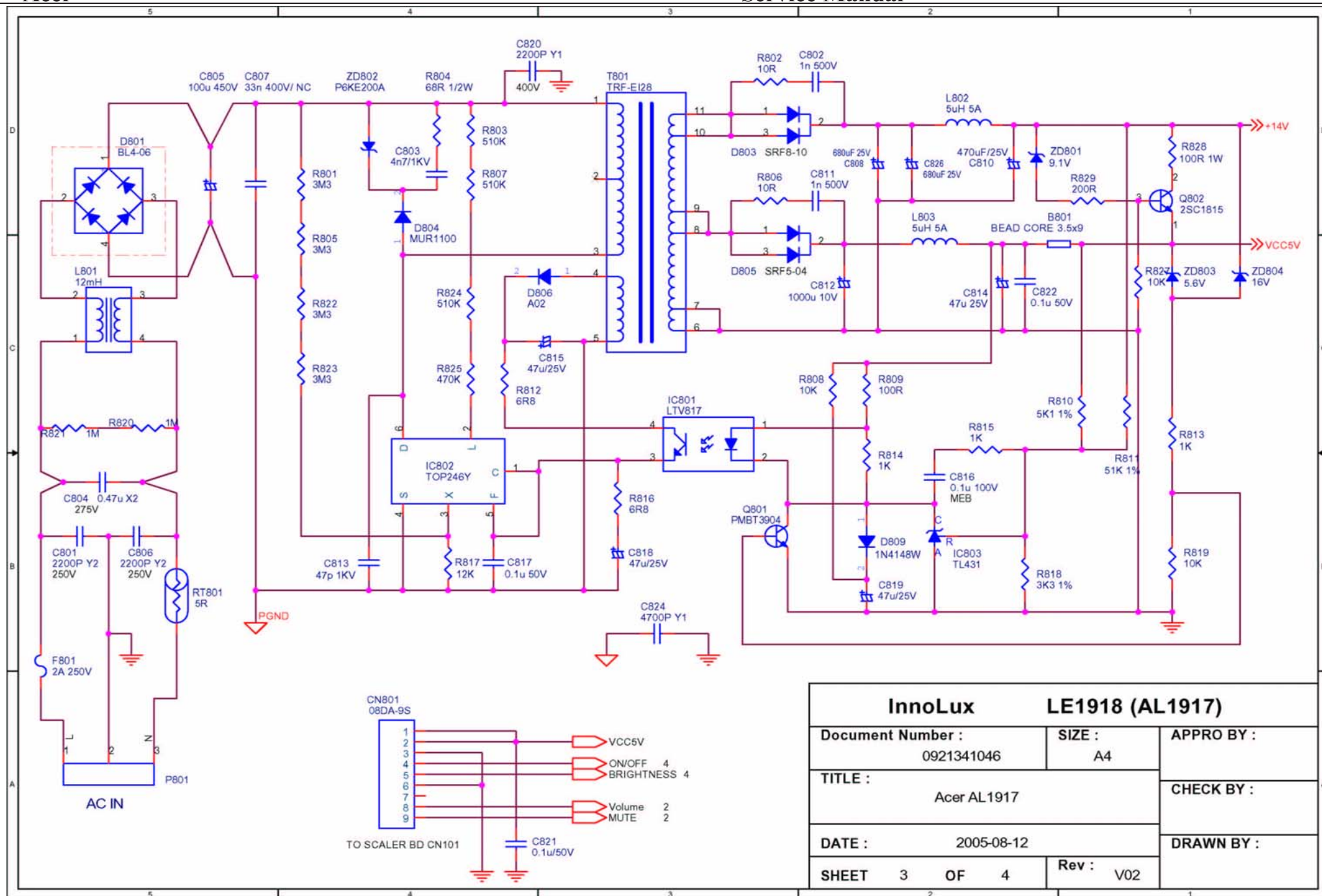
17	453070800210R	PWR CORD 6A/250V BLK 6FT VDE H05VV-F 3Gx	100.000	0
18	506431002000R	FILM,PROTECTION,PRINTED(E),ROHS LE1918,(100.000	0
19	7140838A0100R	ASSY,PANEL(S),W/SPK,LE1918-AG0(AL1917)	100.000	0
19.1	631102090120R	LCD PANEL 19" LM190E03-TLB1(LG.PHILIPS)R	100.000	0
19.2	631102090130R	LCD PANEL 19" LM190E03-TLB4(LG.PHILIPS)R	0.000	0
19.3	502090101100R	CHASSIS, LE1918 ROHS	100.000	0
19.4	790461300400R	PCBA,IF BOARD, LE1918-4G0 ROHS	100.000	0
19.5	790461400A00R	PCBA,PWR&INV./B, LE1918-AG0 ROHS	100.000	0
19.6	790461500000R	PCBA,KEYPAD BOARD, LE1918 ROHS	100.000	0
19.7	430300800380R	HRN ASS'Y 8P 160mm UL2651#28,ROHS	100.000	0
19.8	430303000200R	HRN LVDS FFC 30P 201mm,ROHS,ACCX30201KU2	100.000	0
19.9	509146306100R	SCREW,P,CROSS W/WAS,M3*6,Zn ROHS	700.000	0
19.10	509146304100R	SCREW,P,CROSS W/WAS,M3*4,Zn ROHS	400.000	0
19.11	509000000700R	BOLT,#4-40x11.8,Ni FOR D-SUB/DVI CONN.RO	200.000	0
19.12	506380001700R	TAPE,ACE,30000x20mm(PC=40x20mm),ROHS LP1	0.266	0
19.13	503060004000R	GASKET,EMI,W11xH8xL15mm(TWO-SIDED ADHESI	100.000	0
20	714083840100R	ASSY,PANEL(S),W/SPK,LE1918-4G0(AL1917)	100.000	0
20.1	631102090110R	LCD PANEL 19" HSD190ME13-A02(HANNSTAR)RO	100.000	0
20.2	790461400400R	PCBA,PWR&INV./B, LE1918-4G0 ROHS	100.000	0
21	618100100900R	SPEAKER 1.5W 16Ω 220mm,R/B,W/CASE,X3516	100.000	0
22	501020204600R	COVER,BACK, LE1918 ROHS	100.000	0
23	509116606510R	SCREW,P,CROSS,M4*6,BLACK,NL ROHS (NYLOK)	600.000	0
24	509112608100R	SCREW,P,CROSS,T.T-4*8,Zn ROHS	200.000	0
25	714010000900R	ASSY,STAND, LE1918 ROHS	100.000	0
25.1	501260201200R	STAND, LE1918 ROHS	100.000	0
25.2	502060000700R	HINGE, LE1918 ROHS	100.000	0
25.3	509116618100R	SCREW,P,CROSS,M4*18,Zn ROHS	300.000	0
25.4	502020101600R	BRACKET,FINGER, LE1710 ROHS	100.000	0
26	501020204700R	COVER,HINGE, LE1918 ROHS	100.000	0
27	714020000900R	ASSY,BASE, LE1918 ROHS	100.000	0
27.1	501240201900R	BASE, LE1918 ROHS	100.000	0
27.2	503020002700R	RUBBER,FOOT,L14.8*W9.6*T3.5mm,ROHS LE171	400.000	0
27.3	502170101000R	PLATE,BASE, LE1918	100.000	0
27.4	509112606100R	SCREW,P,CROSS,T.T-4*6,Zn	200.000	0
27.5	503060004000R	GASKET,EMI,W11xH8xL15mm(TWO-SIDED ADHESI	100.000	0
28	714030000900R	ASSY,BEZEL, LE1918 ROHS	100.000	0
28.1	501010203700R	BEZEL,FRONT(SILVER),LE1918(AL1917)ROHS	100.000	0
28.2	501030202600R	BUTTON,POWER KEY, LE1918 ROHS	100.000	0
28.3	501030202500R	BUTTON,FUNCTION KEY, LE1918 ROHS	100.000	0
28.4	501120102000R	LENS, LE1918 ROHS	100.000	0
29	453010100150R	CABLE,D-SUB 15P MALE 6FT BLACK,SZ4120955	100.000	0
30	506120100500R	SEALED BAG,ADHESIVE,330x230mm,LE1918	1.389	0
31	506432000100R	FILM,PE,1400x1270xT0.1mm,LE1918	1.389	0

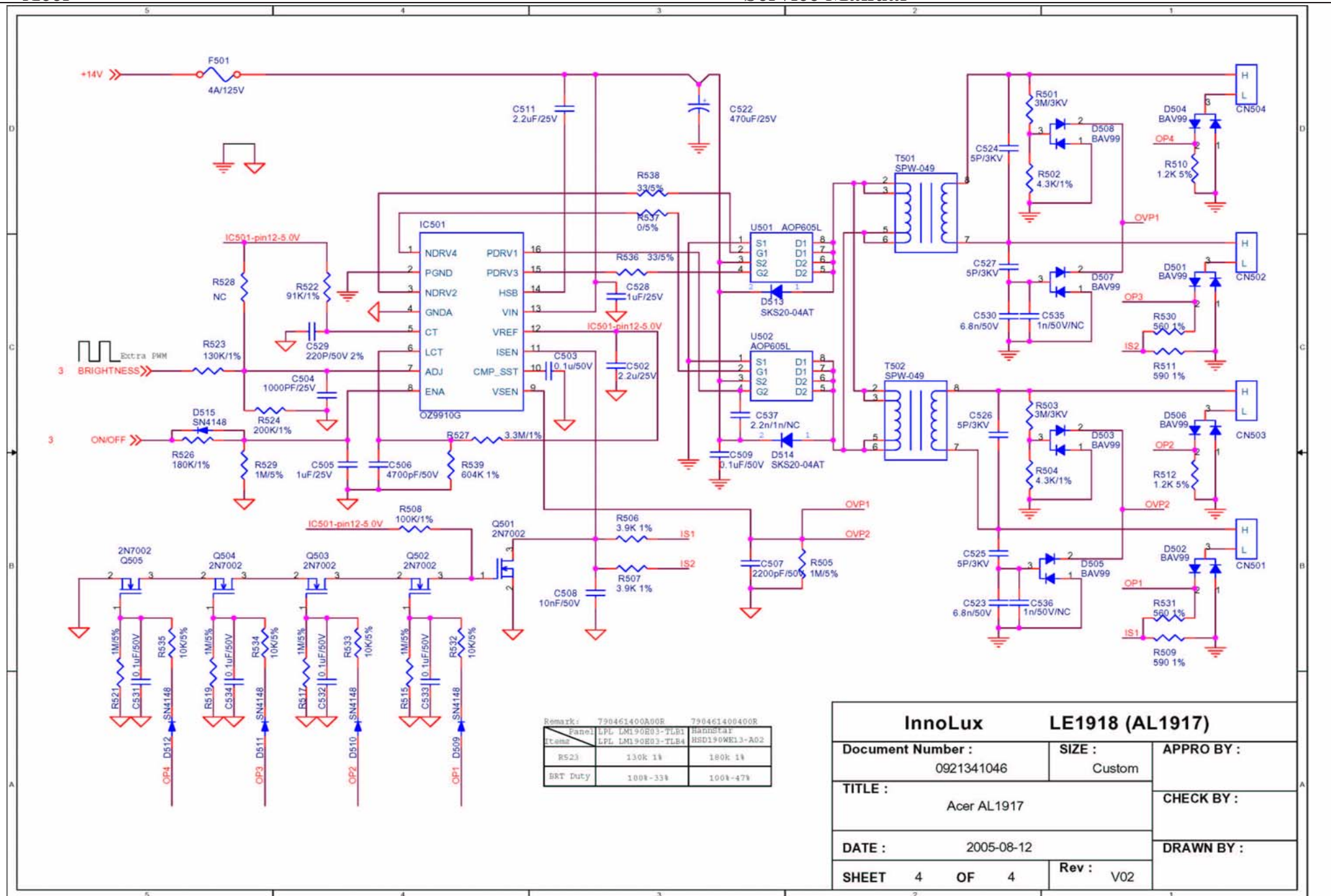
Attachment 2- Schematic

<div style="display: flex; justify-content: space-between; font-size: small;"> 54321 </div> <div style="display: flex;"> <div style="width: 15%; border: 1px solid black; padding: 2px;">Project Name</div> <div style="border: 1px solid black; padding: 2px;">19inch LCD Monitor for Acer AL1917</div> </div>																									
REVISION HISTORY																									
Date	Author	Version	Comments	Remark																					
23/05/2005	Ray He	1A	Preliminary version																						
24/06/2005	Jon Chen	V01	Debug for EVT																						
12/08/2005	Jon Chen	V02	Control circuit for audio / free back circuit for Inverter.																						
APPROVED TO RELEASE			<div style="display: flex; justify-content: space-between; font-weight: bold; font-size: small;"> InnoLuxLE1918 (AL1917) </div> <table border="1" style="width: 100%; border-collapse: collapse; font-size: x-small;"> <tr> <td style="width: 40%;">Document Number :</td> <td style="width: 20%;">SIZE :</td> <td style="width: 40%;">APPRO BY :</td> </tr> <tr> <td style="text-align: center;">0921341046</td> <td style="text-align: center;">A4</td> <td></td> </tr> <tr> <td colspan="2">TITLE :</td> <td>CHECK BY :</td> </tr> <tr> <td colspan="2" style="text-align: center;">Acer AL1917</td> <td></td> </tr> <tr> <td colspan="2">DATE :</td> <td>DRAWN BY :</td> </tr> <tr> <td colspan="2" style="text-align: center;">2005-08-12</td> <td></td> </tr> <tr> <td>SHEET</td> <td>1 OF 4</td> <td>Rev : V02</td> </tr> </table>		Document Number :	SIZE :	APPRO BY :	0921341046	A4		TITLE :		CHECK BY :	Acer AL1917			DATE :		DRAWN BY :	2005-08-12			SHEET	1 OF 4	Rev : V02
Document Number :	SIZE :	APPRO BY :																							
0921341046	A4																								
TITLE :		CHECK BY :																							
Acer AL1917																									
DATE :		DRAWN BY :																							
2005-08-12																									
SHEET	1 OF 4	Rev : V02																							

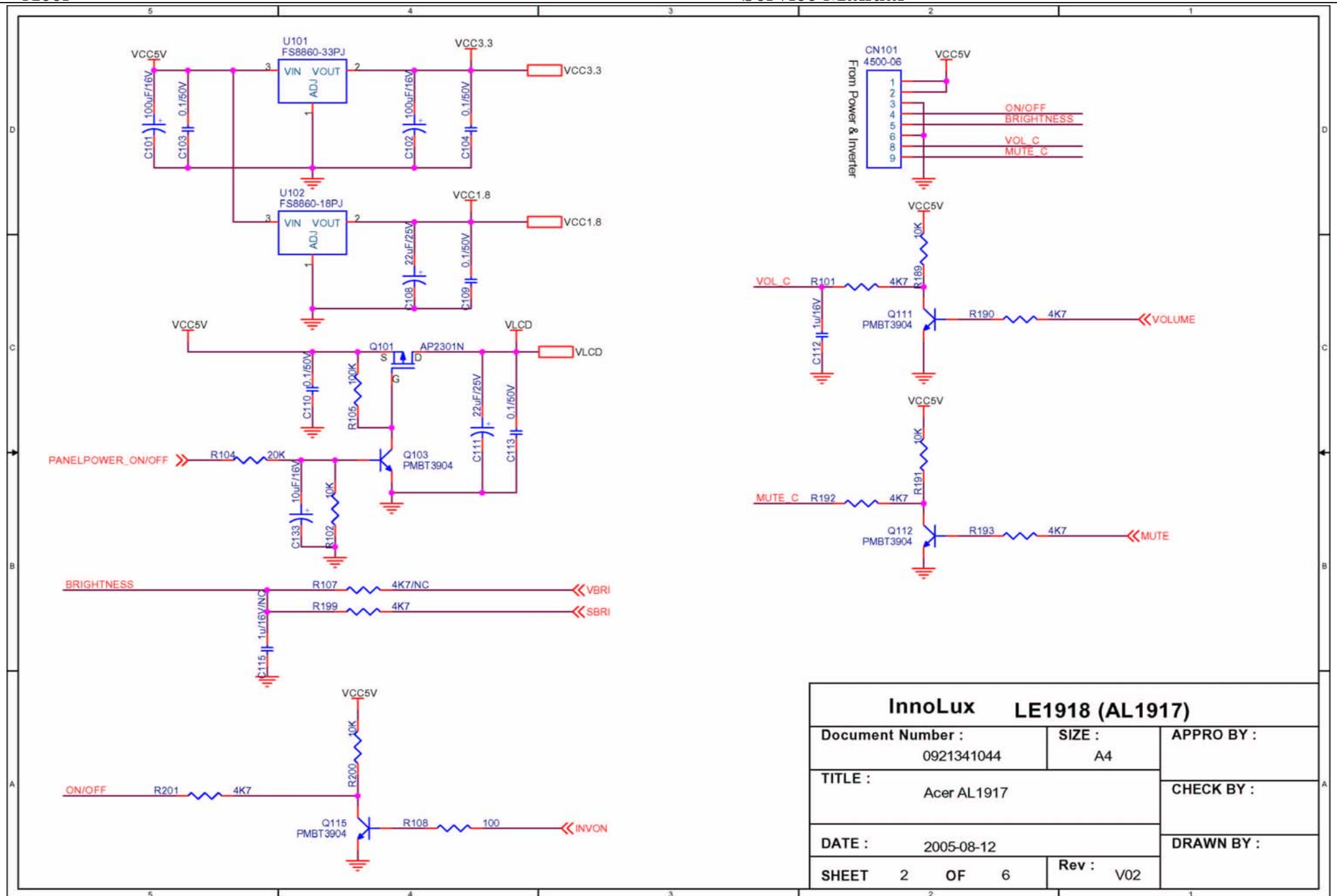


InnoLux		LE1918 (AL1917)	
Document Number :		SIZE :	APPRO BY :
0921341046		A4	
TITLE :			CHECK BY :
Acer AL1917			
DATE :			DRAWN BY :
2005-08-12			
SHEET	2	OF	4
Rev :		V02	



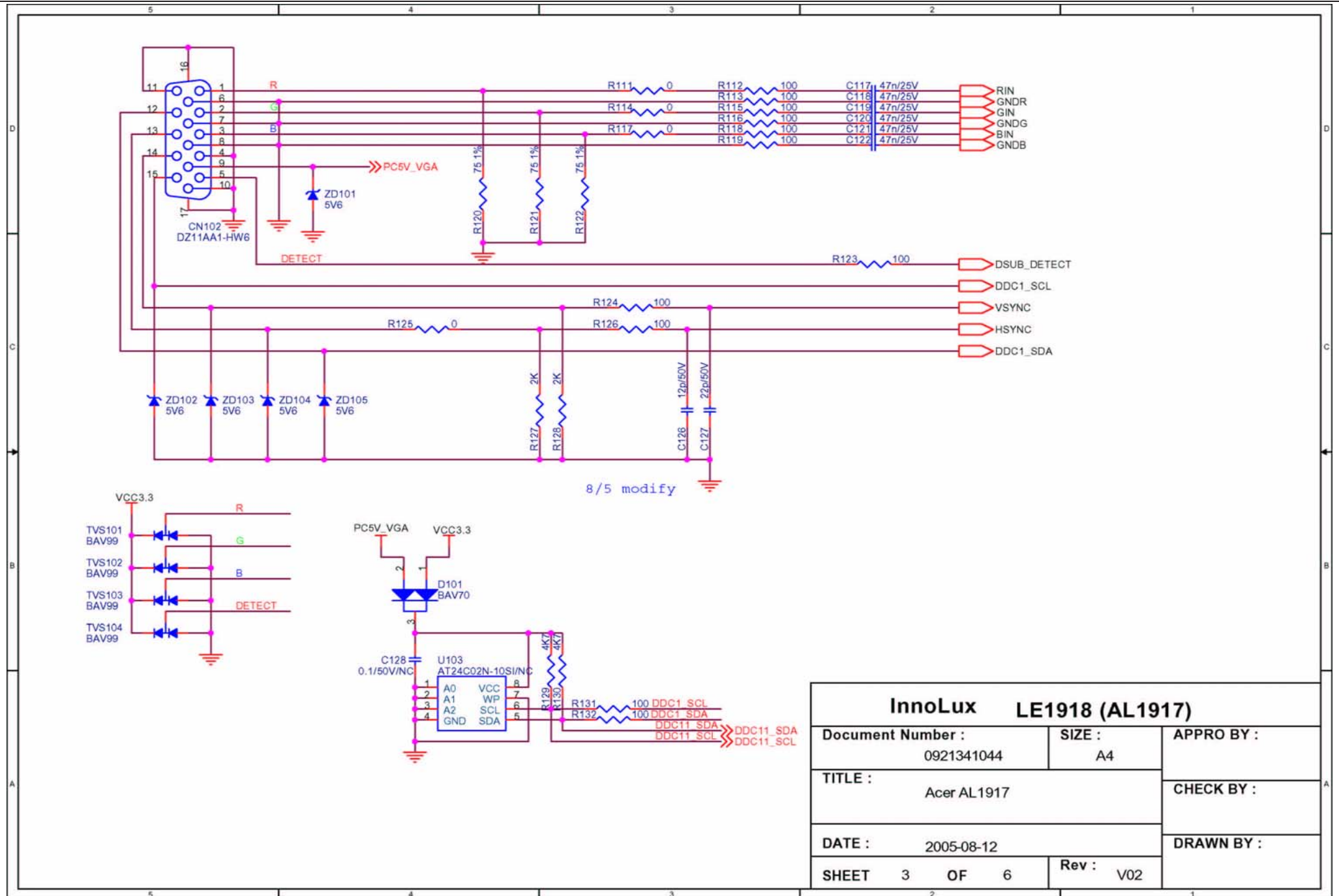


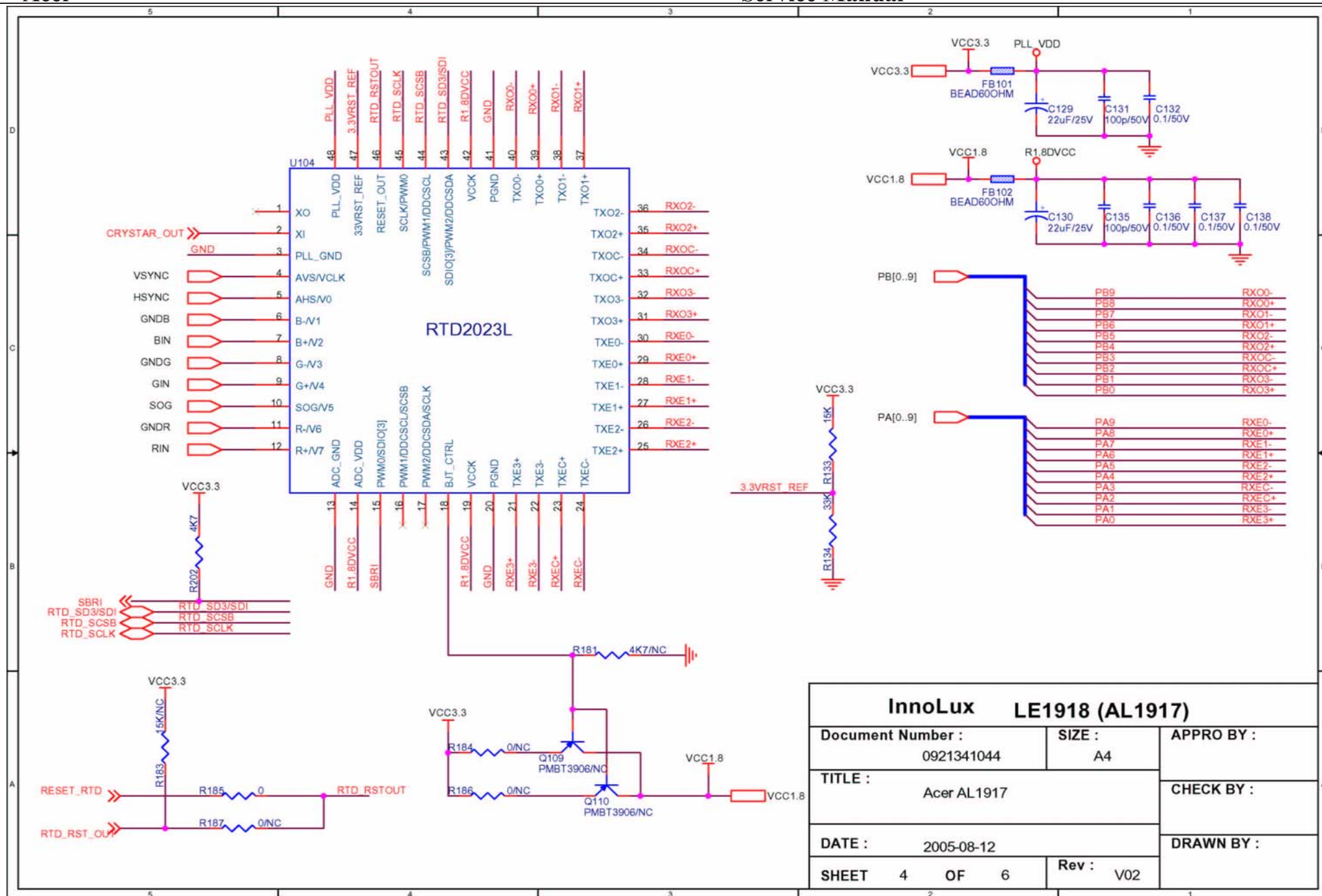
Project Name 19inch LCD Monitor for Acer AL1917																			
REVISION HISTORY																			
Date	Author	Version	Comments	Remark															
2005/05/22	Jon Chen	1A	Preliminary version																
2005/06/24	Jon Chen	V01	Debug for EVT																
2005/08/12	Jon Chen	V02	Modify H/V sync and LDO circuit (3.3V to 1.8V)																
APPROVED TO RELEASE <div style="border: 1px dashed black; width: 150px; height: 100px; margin: 10px auto;"></div>			<table border="1" style="width: 100%; border-collapse: collapse;"> <tr> <td colspan="3" style="text-align: center;">InnoLux LE1918 (AL1917)</td> </tr> <tr> <td style="width: 50%; padding: 5px;"> Document Number : 0921341044 </td> <td style="width: 15%; padding: 5px;"> SIZE : A4 </td> <td style="width: 35%; padding: 5px;"> APPRO BY : </td> </tr> <tr> <td colspan="2" style="padding: 5px;"> TITLE : Acer AL1917 </td> <td style="padding: 5px;"> CHECK BY : </td> </tr> <tr> <td colspan="2" style="padding: 5px;"> DATE : 2005-08-12 </td> <td style="padding: 5px;"> DRAWN BY : </td> </tr> <tr> <td style="padding: 5px;"> SHEET 1 OF 6 </td> <td colspan="2" style="padding: 5px;"> Rev : V02 </td> </tr> </table>		InnoLux LE1918 (AL1917)			Document Number : 0921341044	SIZE : A4	APPRO BY :	TITLE : Acer AL1917		CHECK BY :	DATE : 2005-08-12		DRAWN BY :	SHEET 1 OF 6	Rev : V02	
InnoLux LE1918 (AL1917)																			
Document Number : 0921341044	SIZE : A4	APPRO BY :																	
TITLE : Acer AL1917		CHECK BY :																	
DATE : 2005-08-12		DRAWN BY :																	
SHEET 1 OF 6	Rev : V02																		

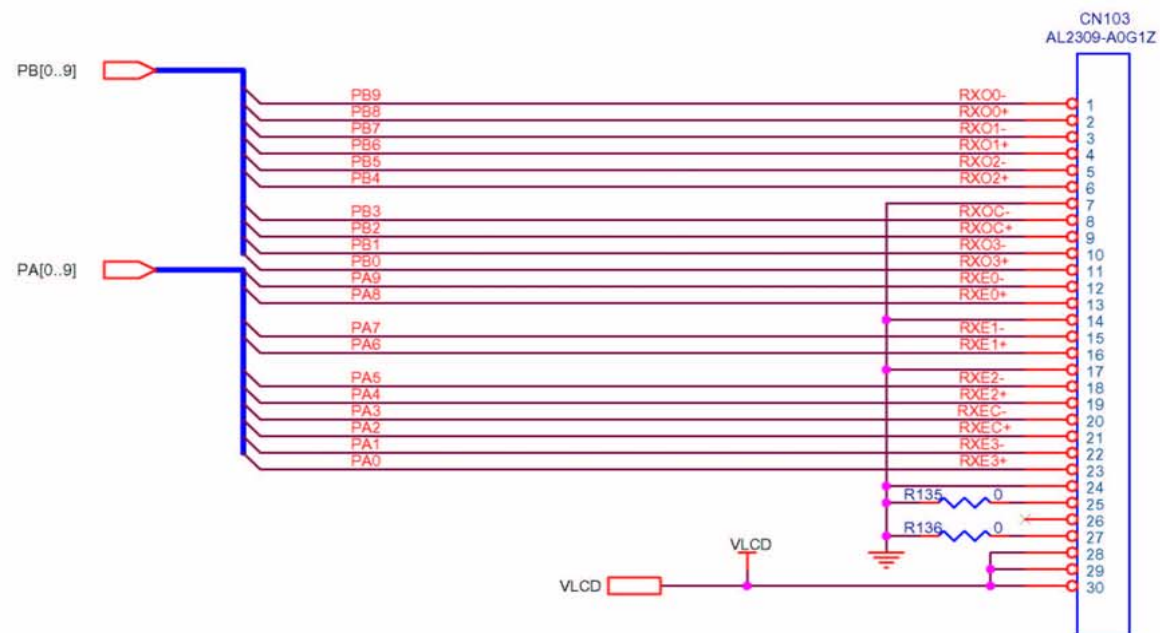


InnoLux LE1918 (AL1917)

Document Number :	SIZE :	APPRO BY :
0921341044	A4	
TITLE :	CHECK BY :	
Acer AL1917		
DATE :	DRAWN BY :	
2005-08-12		
SHEET 2 OF 6	Rev :	V02







InnoLux LE1918 (AL1917)

Document Number :	0921341044	SIZE :	A4	APPRO BY :
TITLE :	Acer AL1917			CHECK BY :
DATE :	2005-08-12			DRAWN BY :
SHEET	5	OF	6	Rev : V02

