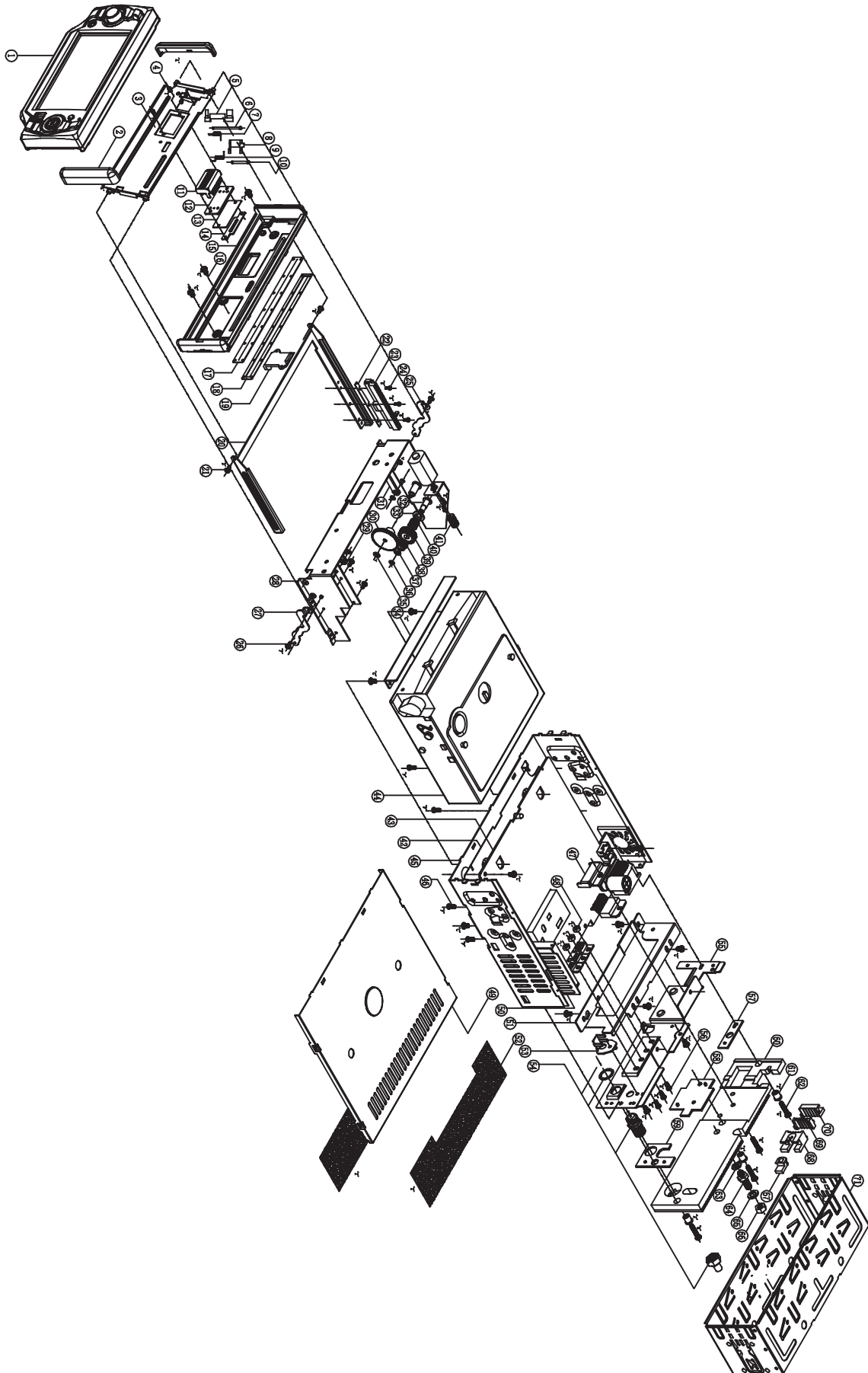


# EXPLODED VIEW

## MAIN SECTION



# EXPLODED VIEW PARTS LIST

## MAIN SECTION

25	439-D3011-00	RIGHT SHAKER	1
24	440-02004-00	SCREW Ø2X4 PH/MS	5
23	552-A1534-01	RACK	1
22	443-D3003-00	RACK WASHER	1
21	440-D3001-00	BRACKET SCREW M2X3.5	2
20	461-D4503-00	SLIDE PANEL	1
19	552-D3043-00	LIGHT BACK FOR CD WINDOW	1
18	443-A1601-00	CD WINDOWS SHEET 0.5MM PC/CLEAR	1
17	581-A1601-00	CD WINDOWS SHADE CLOTH/BLK 0.5 DVD235	1
16	440-03004-00	SREW Ø3.0X4 PH/MS	14
15	551-D3024-00	BASE/ABS/BLACK	1
14	439-C0301-00	SOCK PBC BKT	1
13	435-D3003-00	LINKER FIBRE	1
12		LINKER PCB	1
11		LINKER	1
10	434-D3001-00	SHAFT A	1
9	436-D4502-00	SPRING B	1
8	552-45036-00	HOOK-450B	1
7	436-D4501-00	SPRING A	1
6	434-D4500-00	SHAFT A	1
5	552-45035-00	HOOK-450A	1
4	440-02006-01	SREW Ø2.0X6 BH/MS	2
3	461-D4501-00	MP PANEL	1
2	552-C0347-00	TRIM ART/ABS SPY BLACK	2
1		T-P ASSY	1
NO.	PART NO.	DESCRIPTION	QTY

50	435-D3002-00	FIBER SHEET	1
49	461-D3002-00	TOP CABINET	1
48	435-40003-00	HEXAGON NUT M3	3
47	439-C8604-01	IC 7377 BRACKET (FOR KOMEC)	1
46	440-02604-01	SCREW Ø2.6X4 PH/MS	5
45	461-D3001-00	BASE ASS'Y	1
44	435-D3001-00	FIBER SHEET	1
43	312-03980-391	FIEIBLE DVD-398	1
42	394-02680-50	DECK KOMEC	1
41	552-A1530-00	WORM SHAFT (POM)	1
40	436-A1504-00	WORM SPRING Ø0.8	1
39	552-A1531-00	WORM GEAR (POM)	1
38	452-A1532-00	GEAR (B) (POM)	1
37	435-A1520-00	E-RING	1
36	435-02922-00	"O"RING Ø1.6X3.5 T=0.25/PC	5
35	435-A1521-00	"o" RING Ø2.1X Ø4X0.3	3
34	439-D3013-00	DECK FRONT BRACKET	1
33	552-A1536-00	RUB RING (POM)	1
32	434-A1518-00	GEAR SHAFT	1
31	552-C1501-00	RIGHT ORIENTED PLECE (POM)	1
30	552-A1533-00	GEAR (A) (POM) (R)	1
29	552-B1501-01	ORIENTED PIECE (R)	1
28	461-D3009-00	FRONT BRACKET	1
27	439-D3019-00	LEFT SHAKER	1
26	440-D3002-00	BRACKET SCREW M2X4.7	2
NO.	PART NO.	DESCRIPTION	QTY

# EXPLODED VIEW PARTS LIST (CONTNUED)

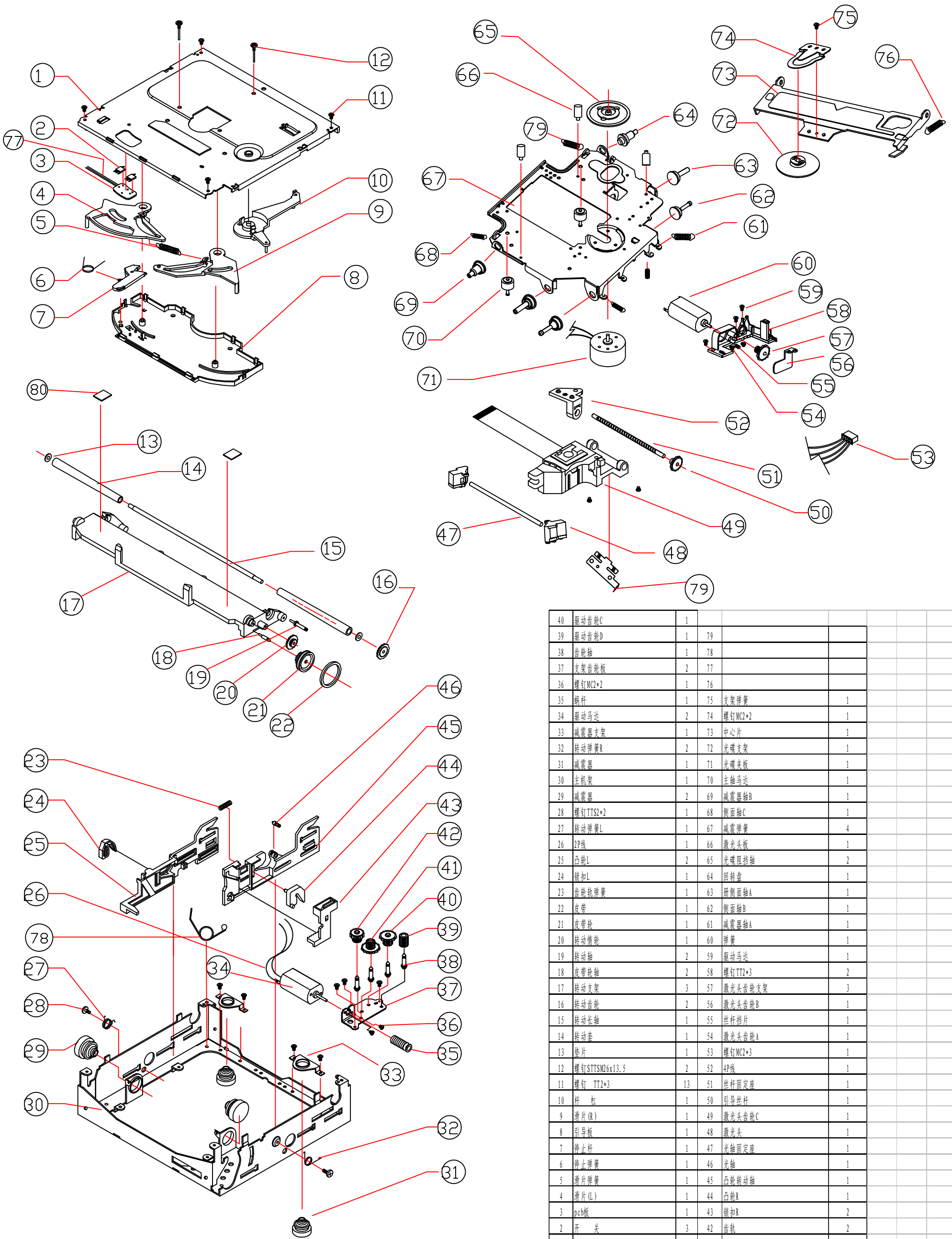
## MAIN SECTION

67	552-52044-00	WIRE-CLIP-COVER/PP	1
66	435-40005-00	HEXAGON NUT M5	1
65	435-51210-00	PLAINL WSHR M5	1
64	434-11461-00	SCREW M5 (REAR CAB)	1
63	435-50001-00	SPRING WASHER M5	1
62	440-03012-00	SCREW Ø3.0X12 PH/MS	4
61	552-D8545-00	WASHER/PC	3
60	461-D3007-00	HEAT SINK	1
59	552-D8542-00	SPACER-01	1
58	552-D8544-00	SPACER-03	1
57	552-D8543-00	SPACER-02	1
56	440-03006-00	SCREW Ø3.0X6 PH/MS	3
55	461-D3004-01	REAR BRACKET	1
54	439-D1510-00	TV JACK (5PCS)	1
53	439-B6005-00	CLIP BRACKET	1
52	435-B6002-00	DUSTPROOF CLOTH	2
51	461-87707-00	BACK BRACKET FOR DECK	1
NO.	PART NO.	DESCRIPTION	QTY

71	461-B6002-00	MTG BOX	1
70	552-52041-00	WIRE-CLIP-LEFT/PC	1
69	552-52042-00	WIRE-CLIP-MIDDLE/PP	1
68	552-52043-00	WIRE-CLIP RIGHT/PP	1
NO.	PART NO.	DESCRIPTION	QTY

# EXPLODED VIEW PARTS LIST (DECK)

标记	年月日	变更事项	变更理由	修订	确认
△					
△					
△					



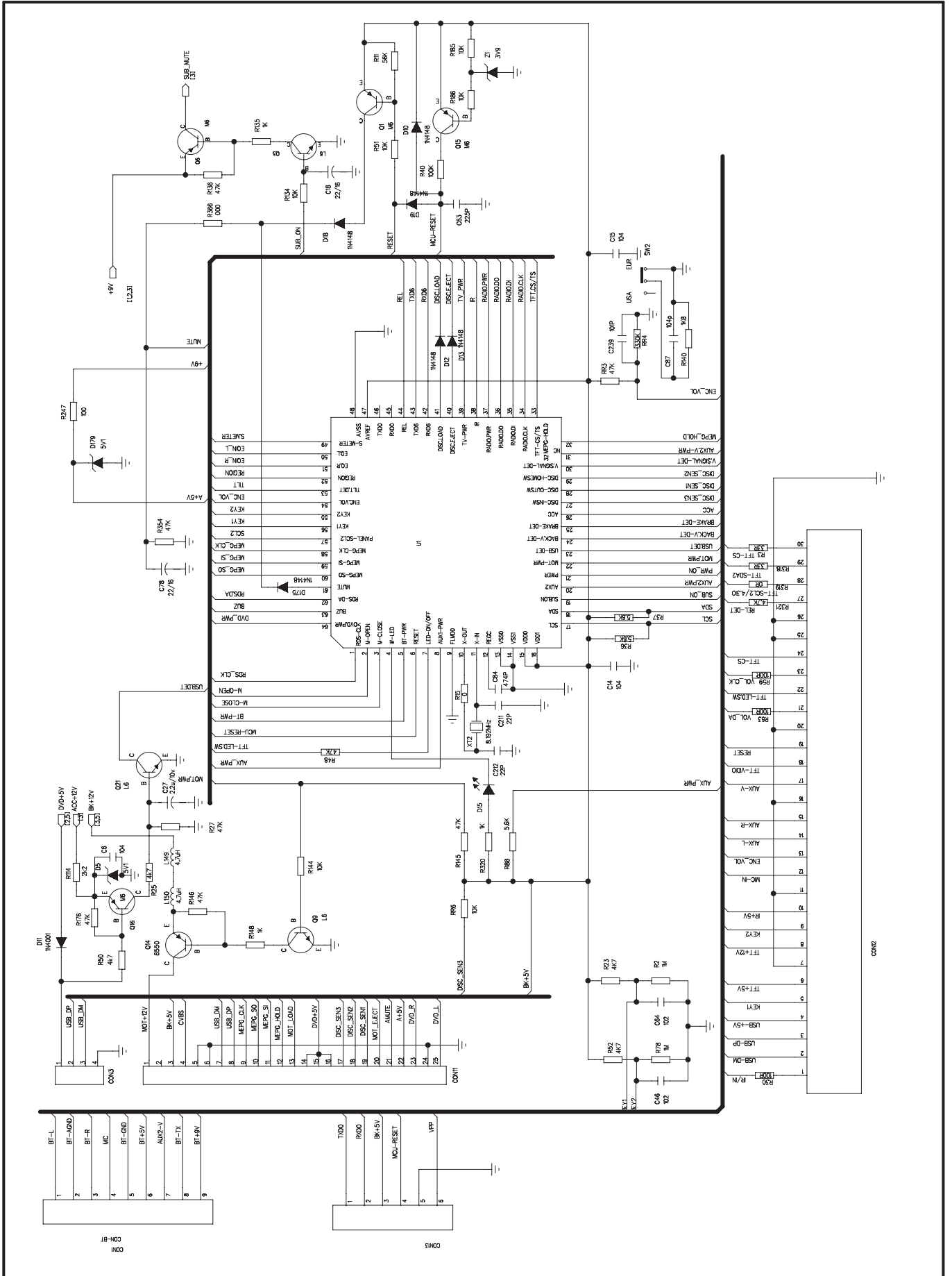
40	驱动齿轮C	1			
39	驱动齿轮D	1	79		
38	齿轴轴	1	78		
37	支架齿轮板	2	77		
36	螺钉MC2*2	1	76		
35	轴杆	1	75	支架弹簧	1
34	驱动马达	2	74	螺钉MC2*2	1
33	减震器支架	1	73	中心片	1
32	转动弹簧R	2	72	光碟支架	1
31	减震器	1	71	光碟盖板	1
30	主框架	1	70	主轴马达	1
29	减震器	2	69	减震器轴B	1
28	螺钉TTS2*2	1	68	侧面轴C	1
27	转动弹簧L	1	67	减震弹簧	4
26	2P线	1	66	激光头板	1
25	凸轮L	2	65	光碟阻轴轴	2
24	锁扣L	1	64	回转盘	1
23	齿轮软弹簧	1	63	侧面轴A	1
22	皮带	1	62	侧面轴B	1
21	皮带轮	1	61	减震器轴A	1
20	转动惰轮	1	60	弹簧	1
19	转动轴	2	59	驱动马达	1
18	皮带轮轴	2	58	螺钉TT2*3	2
17	转动支架	3	57	激光头齿轮支架	3
16	转动齿轮	2	56	激光头齿轮B	1
15	转动长轴	1	55	丝杆挡片	1
14	转动套	1	54	激光头齿轮A	1
13	垫片	1	53	螺钉MC2*3	1
12	螺钉STTSM2.6x13.5	2	52	4P线	1
11	螺钉 TT2*3	13	51	丝杆固定座	1
10	杆 杠	1	50	引导丝杆	1
9	薄片(R)	1	49	激光头齿轮C	1
8	引导板	1	48	激光头	1
7	停止杆	1	47	光轴固定座	1
6	停止弹簧	1	46	光轴	1
5	薄片弹簧	1	45	凸轮转动轴	1
4	薄片(L)	1	44	凸轮R	1
3	pcb板	1	43	锁扣R	2
2	开 关	3	42	齿轴	2
1	上 盖	1	41	驱动齿轮A	1

Chinese Name English Name QTY  
机型:  
DVX-600



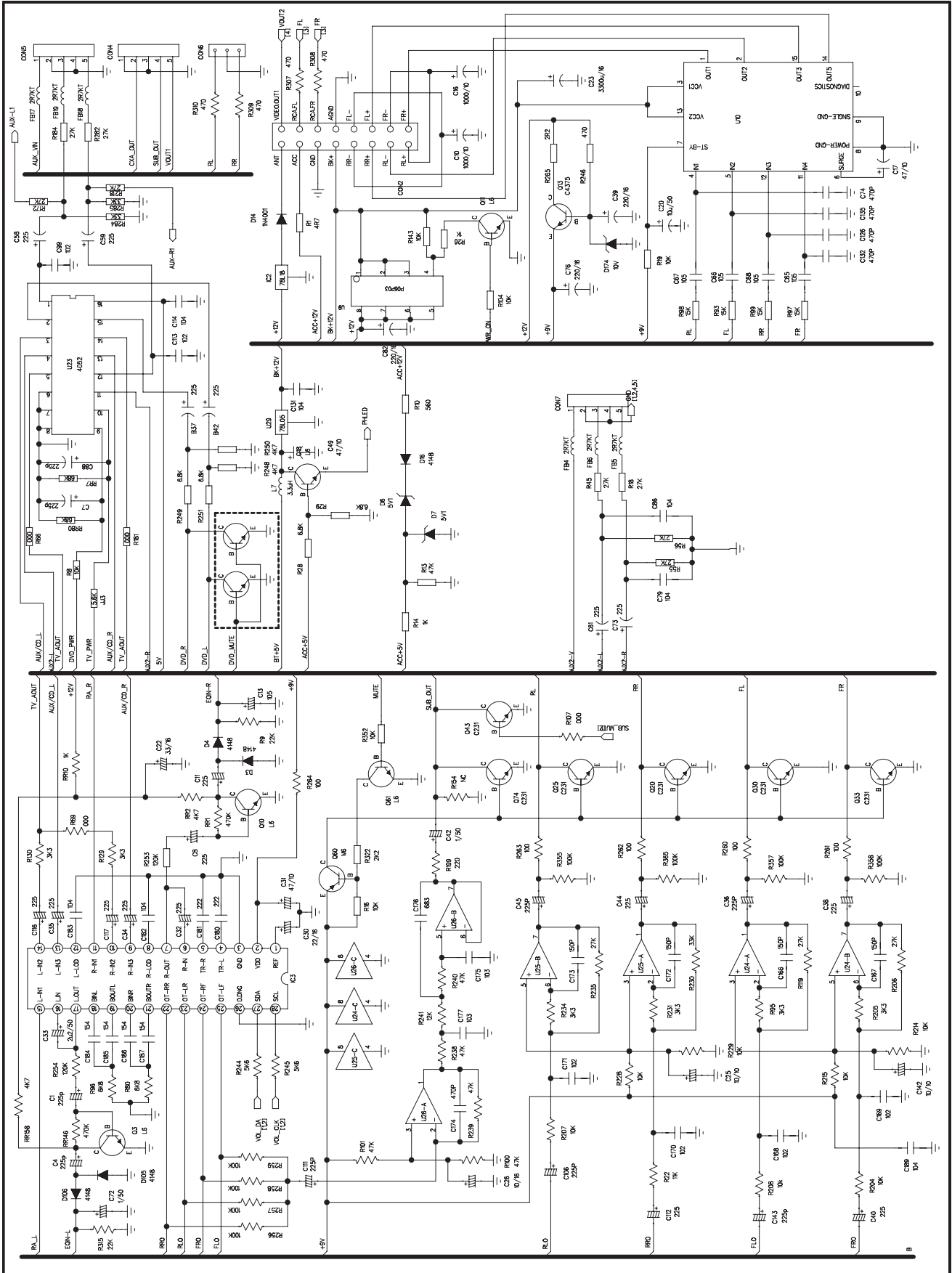
# SCHEMATIC DIAGRAM

## MAIN BOARD 2/5 Section



# SCHEMATIC DIAGRAM

## MAIN BOARD 3/5 Section

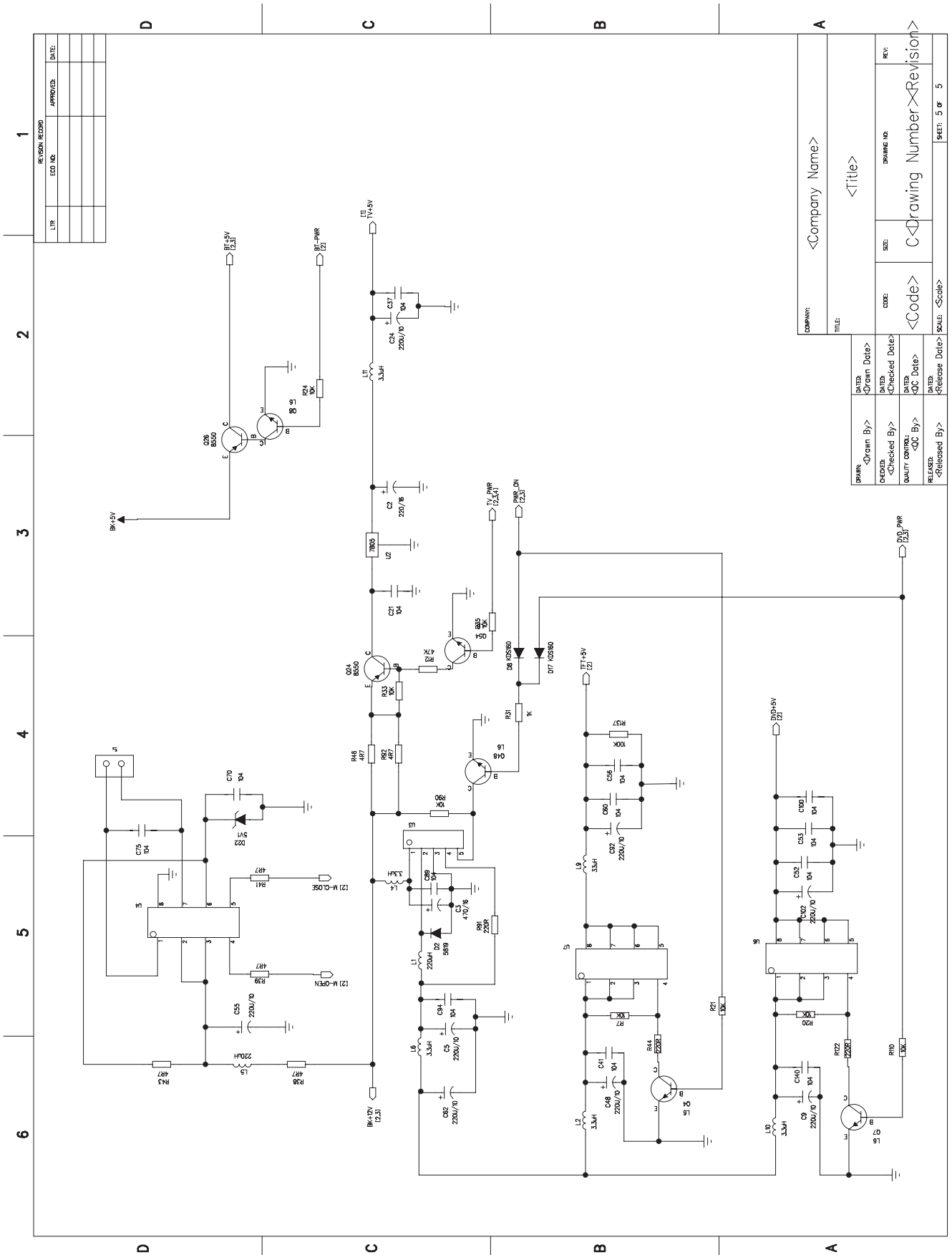






# SCHEMATIC DIAGRAM

## MAIN BOARD 5/5 Section

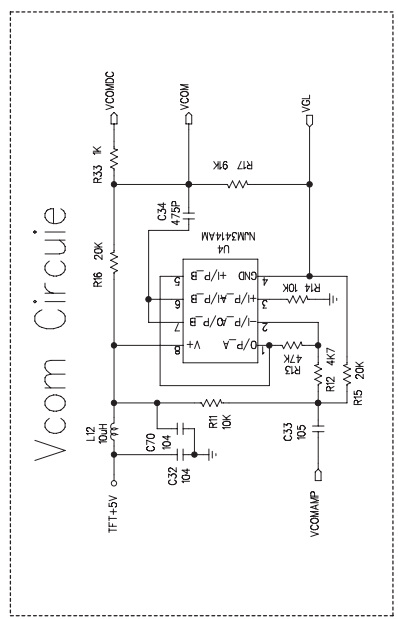
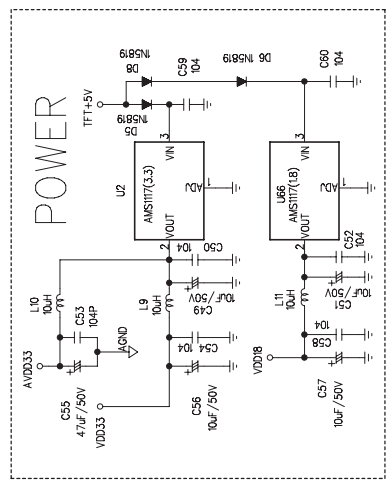
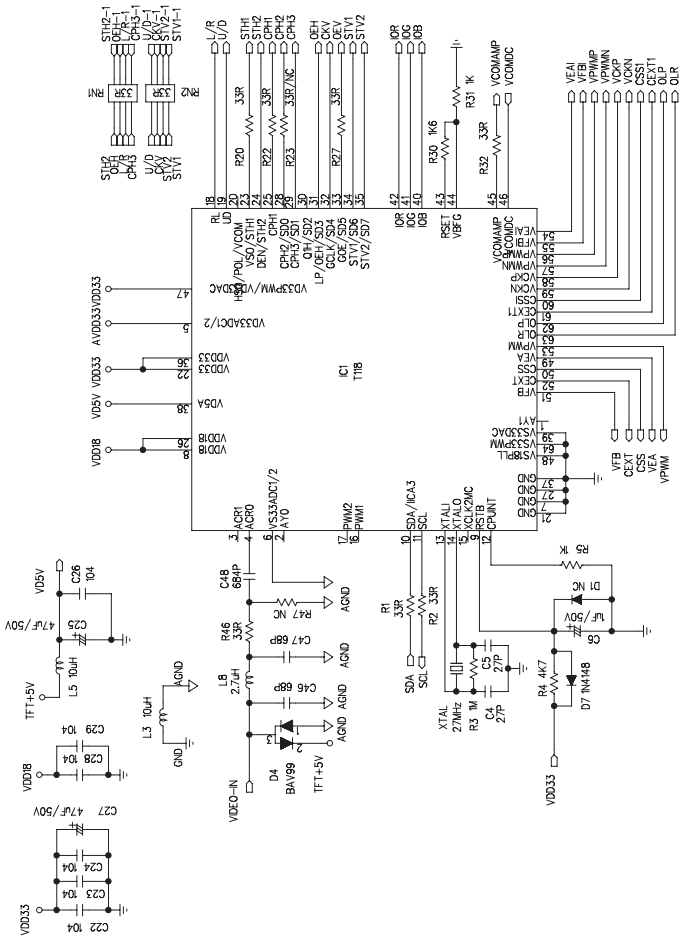
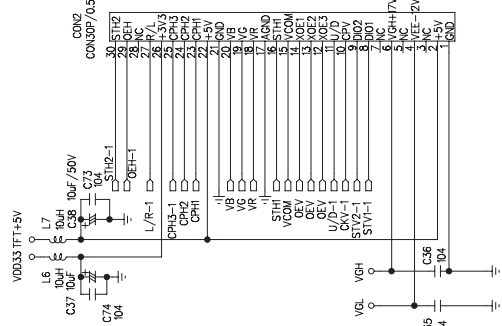
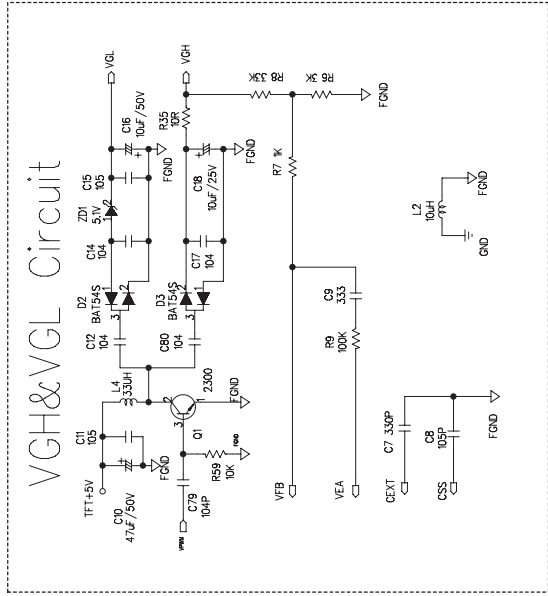
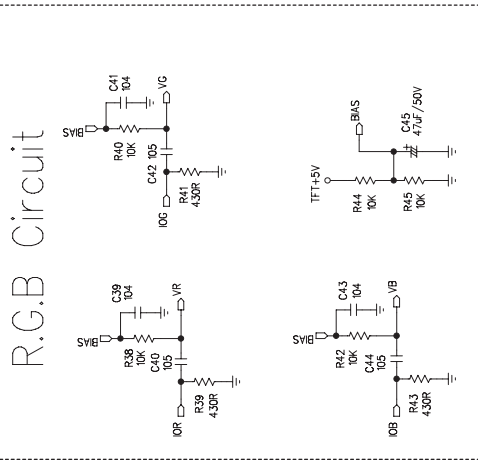


REVISION RECORD	
LTP	DATE:
ECO NO.	APPROVED:

COMPANY: <Company Name>		TITLE: <Title>	
DATE: <Drawn Date>	DATE: <Checked Date>	DATE: <QC Date>	DATE: <Release Date>
DRAWN BY: <Drawn By>	CHECKED BY: <Checked By>	QUALITY CONTROL: <QC By>	RELEASED BY: <Released By>
CODE: <Code>	SIZE: <Size>	DRAWING NO: <Drawing Number> <Revision>	
SCALE: <Scale>		SHEET: 5 OF 5	

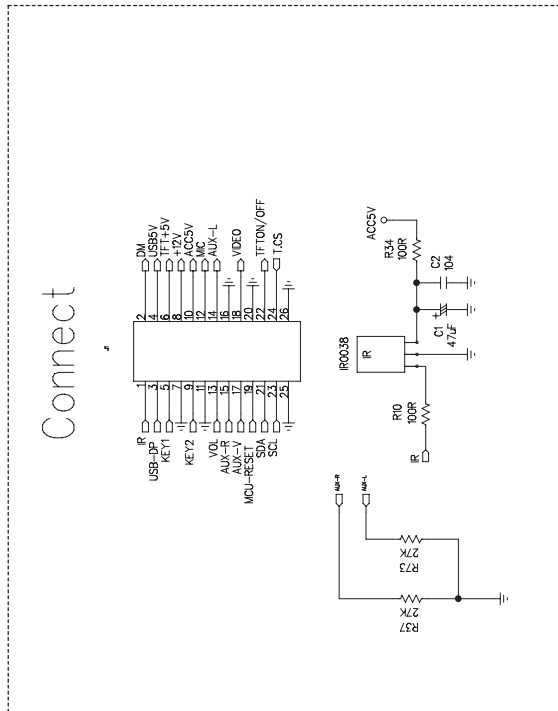
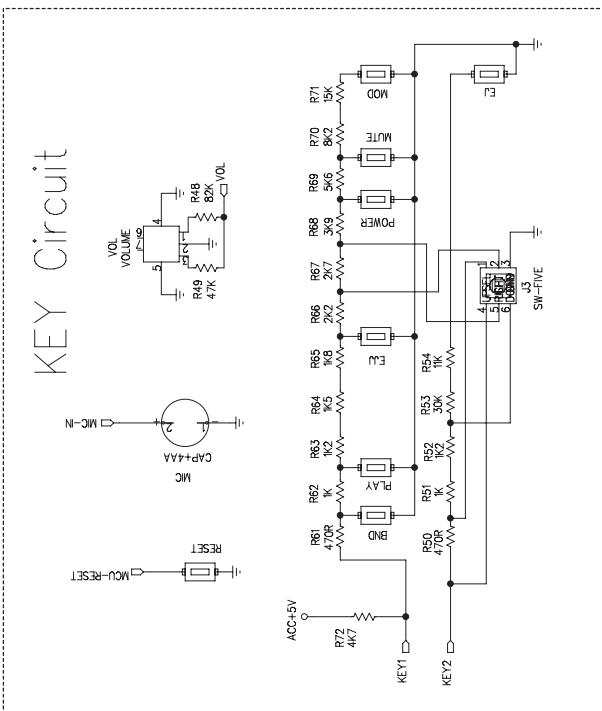
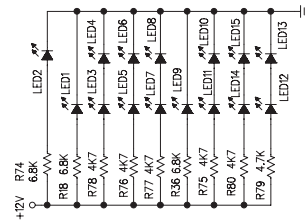
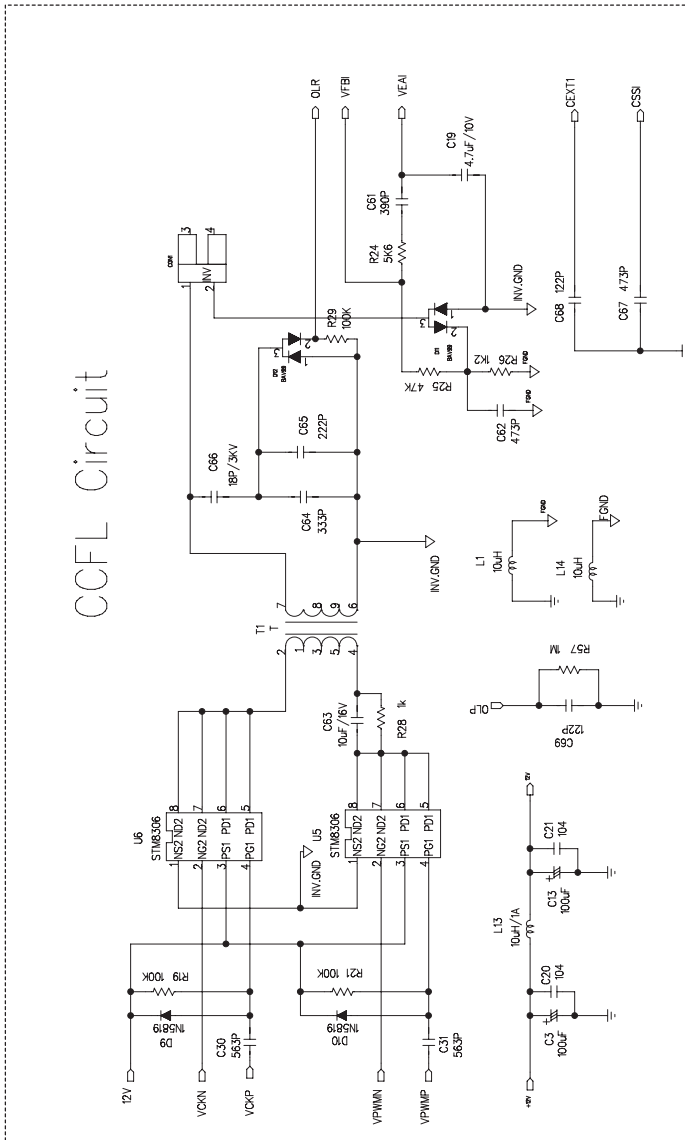
# SCHEMATIC DIAGRAM

## KEY BOARD 1/2 SECTION



# SCHEMATIC DIAGRAM

## KEY BOARD 2/2 SECTION



# SCHEMATIC DIAGRAM

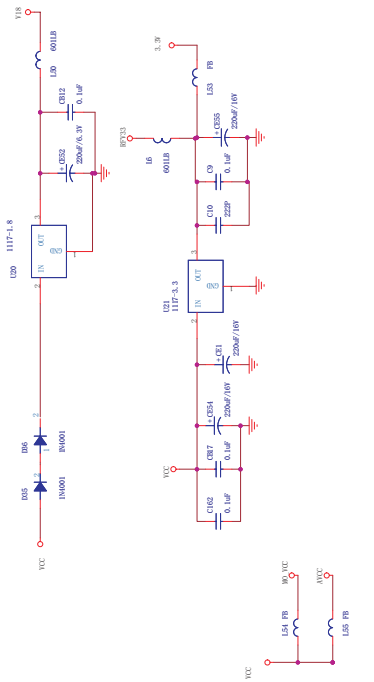
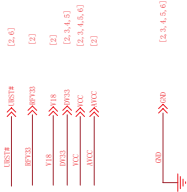
## CD SERVO BOARD 1/4 Section

MT1389HD\_HD60\_HDMI\_V3S1  
**MT1389/HD (LQFP256) DVD for SANYO HD65 PUH**

- 1 INDEX & POWER, RESET
- 2 RF, SERVO & MPEG - MT1389HD
- 3 MEMORY - SDRAM, FLASH/EEPROM
- 4 VIDEO OUT
- 5 AUDIO DAC PCMI742 AND AUDIO OUT
- 6 HDMI MT1392

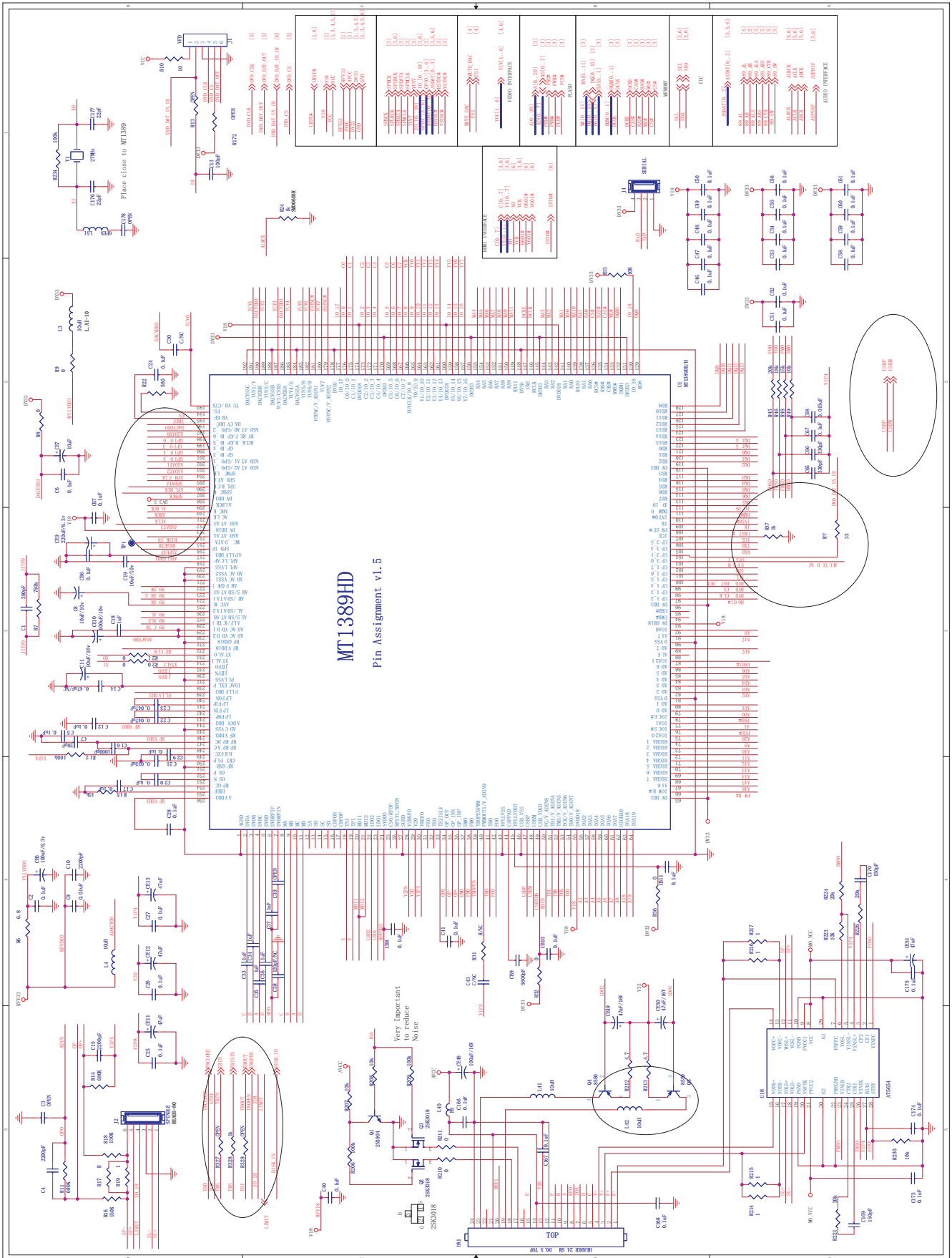
Rev	Description	History	PH	Date
V1	The original released.			
V2	HDMI + Card Reader Integrated Design			

NAME	TYPE	DEVICE
VCC	Digital 5V	SUPPLY
DW33	Digital 3.3V	MT1389HD
+5V	Video 5V	
AVCC	RF 5V	PICKUP HEADER
V18	Digital 1.8V	MT1389HD
SD33	Digital 3.3V	SDRAM
+12V, -12V	OP AMP.	
VCC_AUDIO	Audio +12V, -12V	Audio DAC
DW0018	Audio 5V	MT1392
92_DW33	Audio 3.3V	MT1392



# SCHEMATIC DIAGRAM

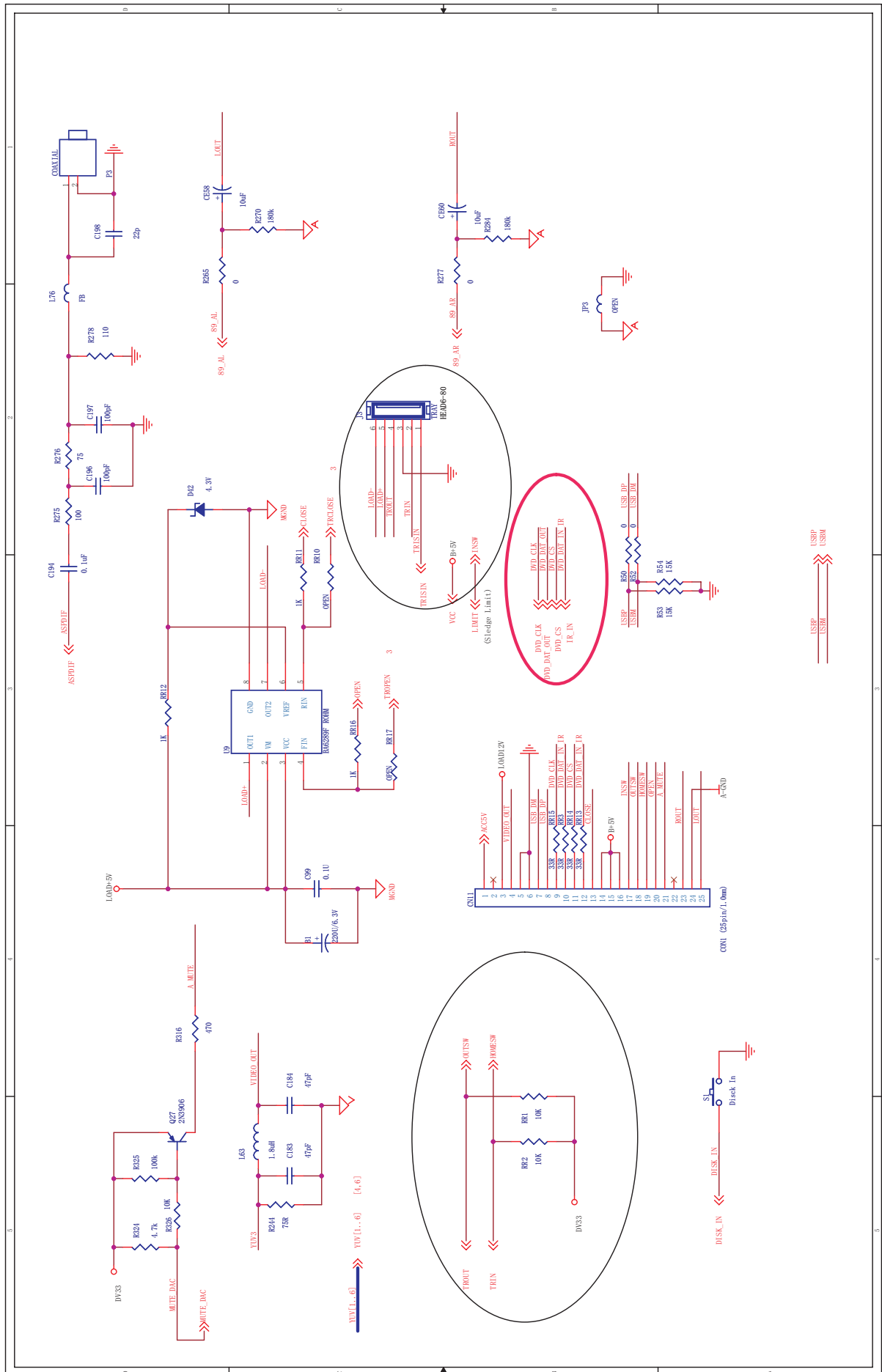
## CD SERVO BOARD 2/4 Section





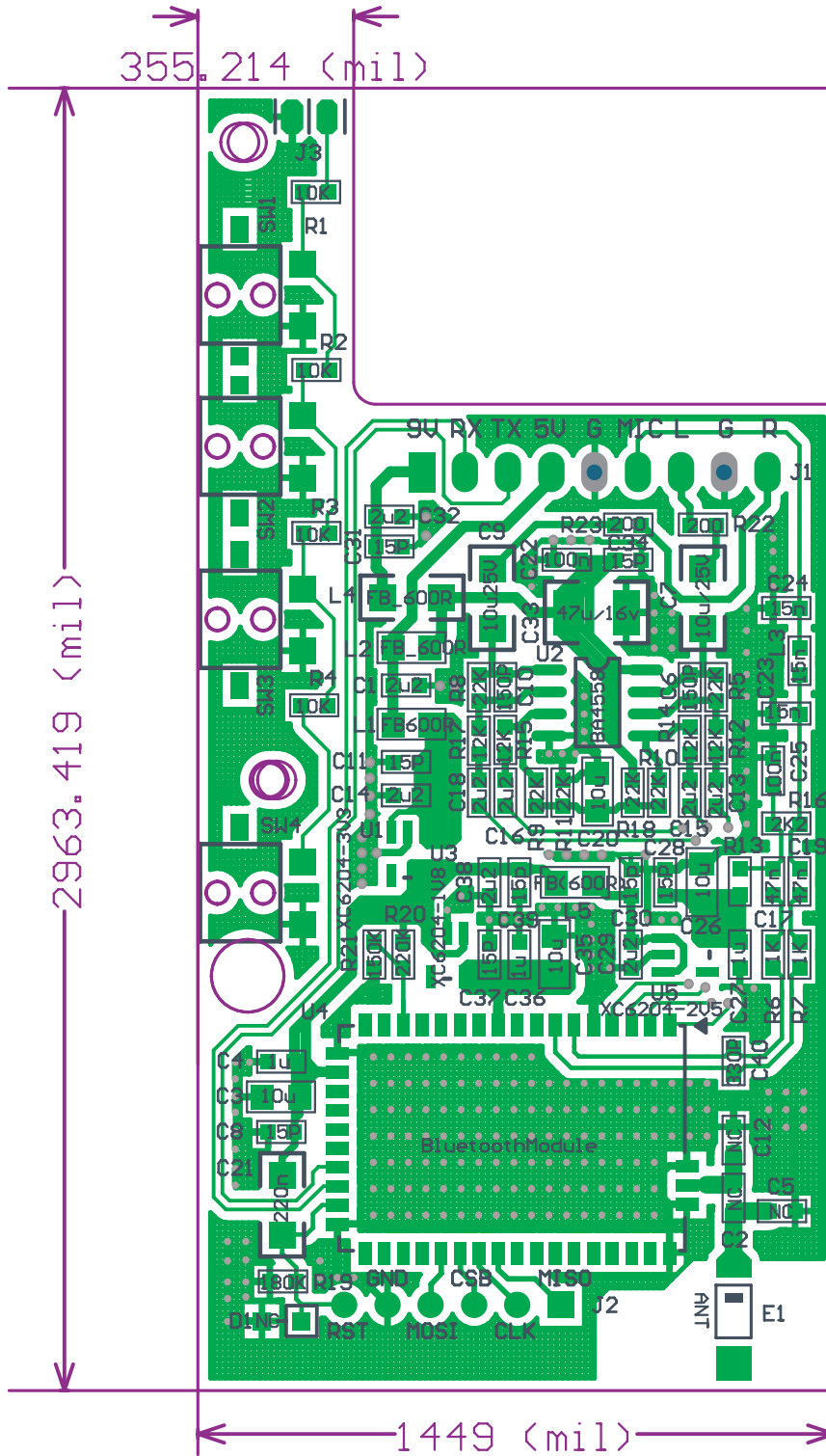
# SCHEMATIC DIAGRAM

## CD SERVO BOARD 4/4 Section



# PRINTED CIRCUIT BOARDS

## BLUE-TOOTH BOARD

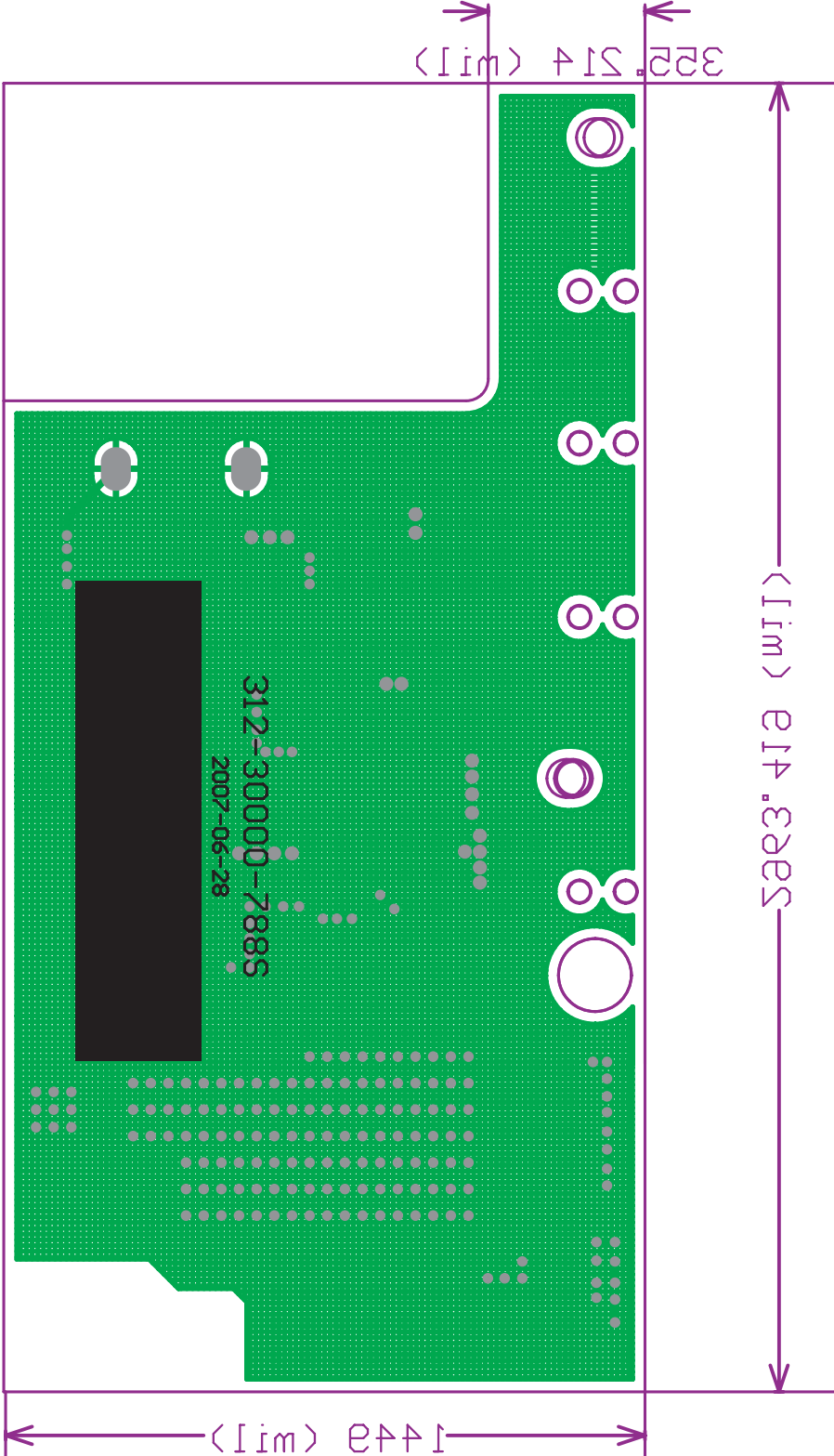


TOP VIEW



# PRINTED CIRCUIT BOARDS

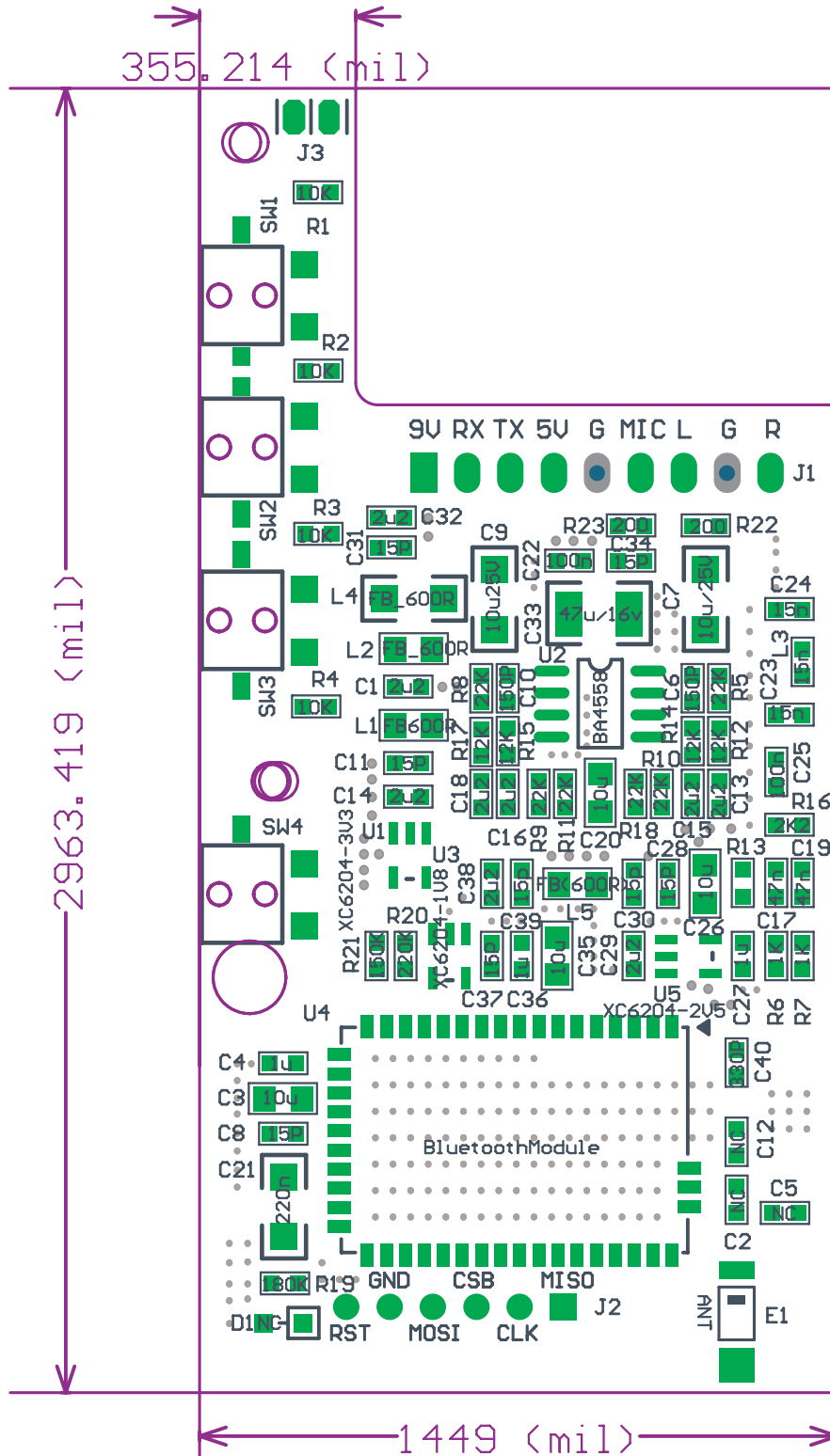
## BLUE-TOOTH BOARD



BOTTOM VIEW

# PRINTED CIRCUIT BOARDS

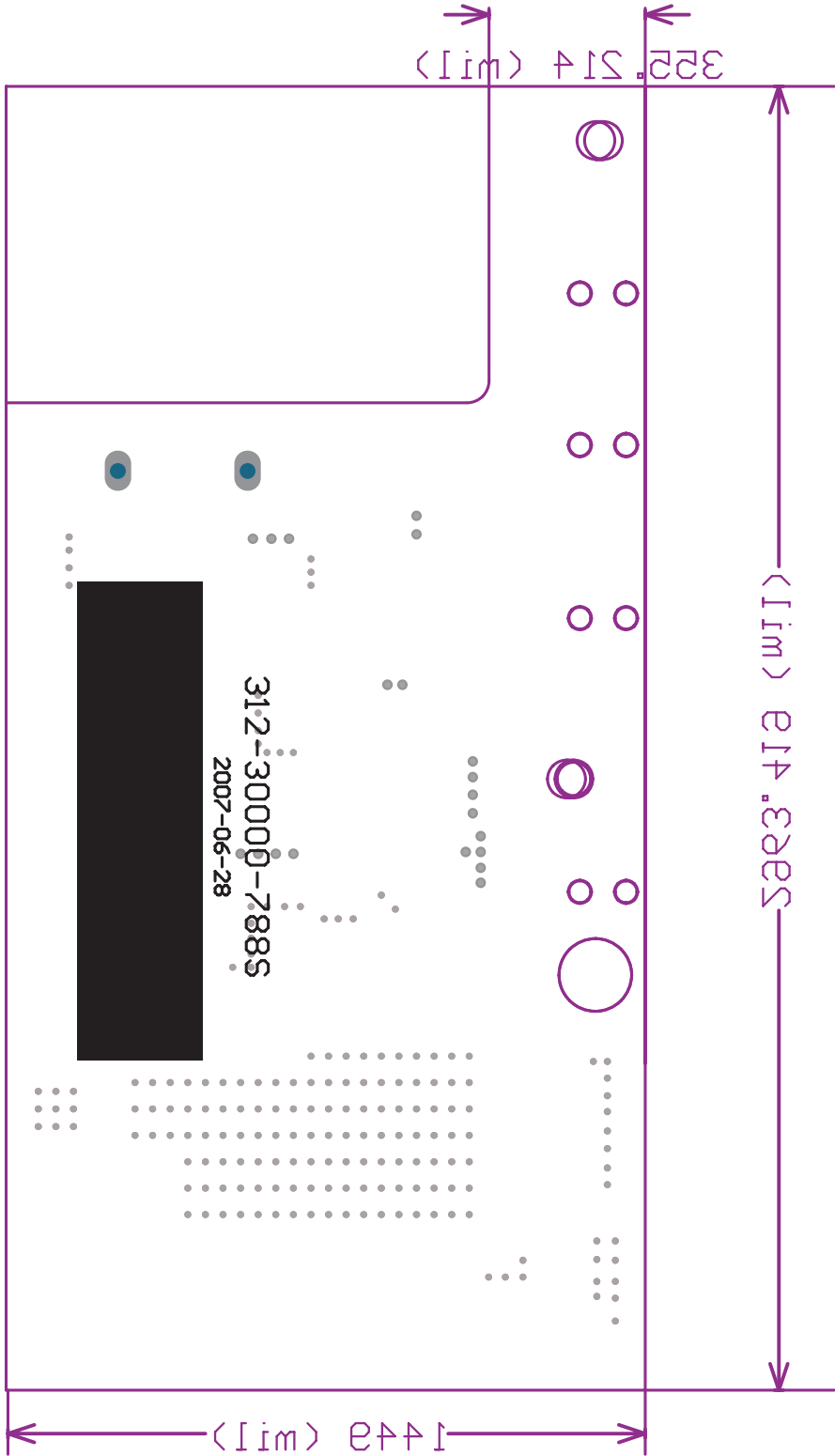
## BLUE-TOOTH BOARD



TOP VIEW

# PRINTED CIRCUIT BOARDS

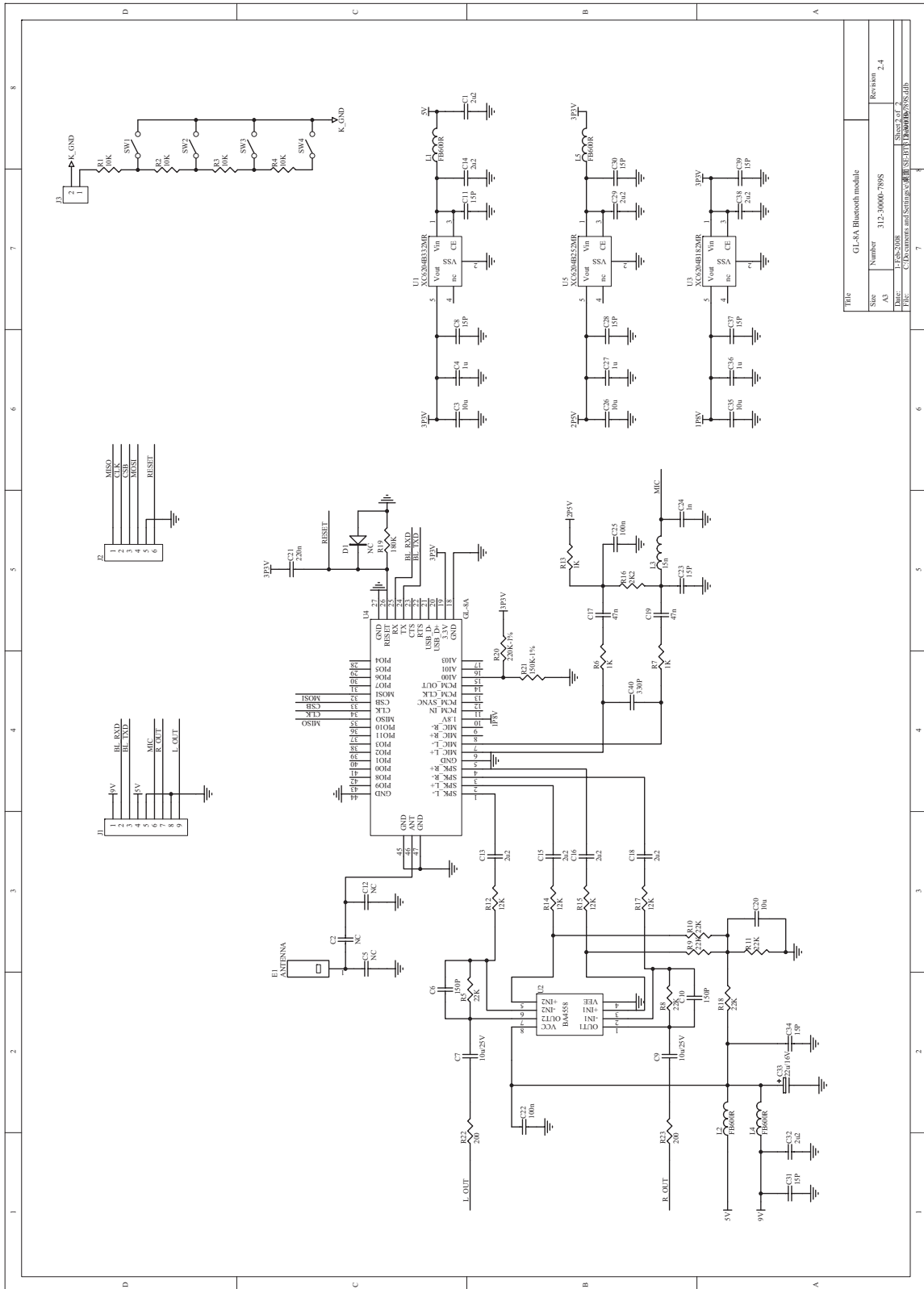
## BLUE-TOOTH BOARD



BOTTOM VIEW

# SCHEMATIC DIAGRAM

## BLUE-TOOTH BOARD



Title	GL-8A Bluetooth module
Size	Number
AS	312-3000-7895
Date	L.Pcs:3008
File	C:\Document and Settings\user\B1\Documents\bluetooth\bluetooth.sch
Sheet 2 of 2	Revision
	2.4

# ELECTRICAL PARTS LIST

## MAIN BOARD SECTION

REF.NO.	DESCRIPTION	PART NO.	QTY
	312-30000-014S 28PIN	379-T2230-05	1
Q20.25.30.33.43.74.45.42.	KEC231S (SOT-23)	101-00231-00S	8
Q6.49.15.16.60.23.18.1.	TR 2SA812 SMD	101-00812-00S	8
Q3.4.5.10.11.12.50.52.53.19.35.61.9. 24.40.39.36.34.21.48.37.41.46.62.7.	TR.KTC3875 CHANG DIAN '(ALY) SMT	101-03875-07S	25
Q44.	2N3904 SOT23	101-03904-00S	1
Q47.	3906 SOT-23	101-03906-00S	1
Q13.	TR.DTC 4375-Y (SOT-89)	101-04375-00S	1
Q14.2.54.22.	TR 3CA8550M (SOD-23) SMT	101-08550-04S	4
D8.16.32.	CUSTOM VENDOR (KDS160)	102-00160-00S	3
LED1.	2012S60C SMT 0805 LED ORANGE	102-01701-03S	1
D24	DIODE IN4001	102-04001-00S	1
D11	DIODE IN-4001 (SOD-106) M1.	102-04001-01S	1
D12.13.105.106.175.176.177. 3.4.2 7.14.10.18.19.17.22.23.31.30.	DIODE 1206 1N4148 +/-5% SMT 1206	102-04148-12S	19
D2.	DIODE IN5819 (SOD-106) SS16	102-05819-02S	1
Z1	ZENER DIODE 3.9V +/-5%(LL-34)	102-50039-02S	1
D6.7.	ZENER DIODE 5.1V +/-5% SMT 1206	102-50051-03S	2
Z2..Z4.	ZENER DIODE 5.6V 1206 0.5W +/-5% SMT	102-50056-12S	2
D25.9.	ZENER DIODE 6B2 5.8V ±0.1V 1206	102-50058-12AS	2
D174.	ZENER DIODE 10V +/-5% SMT(LL-34)1206	102-50100-02S	1
U4.	IC CHIP NJM2233BM	103-02233-00S	1
UU3	IC CHIP NJM2293M	103-02293-00S	1
U27	IC NJM2575F (MTP6)	103-02575-01S	1
U26.24.25	IC F4558 SOP(FORCING)	103-04558-26S	3
U6.7. 9.	IC P06P03LVG SOP-8	103-06030-00S	3
U20	IC SMT BA6417F	103-06417-00S	1
IC3.	IC CHIP SC7313	103-07313-02S	1
U8	IC TDA-7377 (ST)	103-07377-00S	1
IC1.	IC TO-92.	103-07809-00S	1
IC2	REGULATOR LC-78L18	103-07818-00S	1
IC4	IC CHIP SC9257S	103-09257-00S	1
U1.	CPU 78F0536 GK(T)-VET-A	103-78536-00S	1
XT3	CRYSTAL HC-49/S 4.5MHZ JAPAN-LO	104-00045-01S	1
XT2	CRYSTAL 8.192MHZ HC-49S	104-08192-00S	1
CC02	MYLAR CAP 0.1UF	105-02104-10S	1
CC01.	MYLAR CAP 0.033UF ±10%	105-02333-10S	1
C198.199.238.240.239.	CAP 0603 100P 25V +/-10% SMT	105-03101-63S	5
C168.169.170.171.165.137.99.113.3 7.119.118.	CAP 0603 102 25V +/-10% SMT	105-03102-63S	11
C175.177.155.41.	CAP 0603 103 25V +/-10%	105-03103-63S	4
C65.66.67.68.72.81.13.	CAP 0603 105Z/50V ±10% SMT	105-03105-63S	7

## MAIN BOARD SECTION

REF.NO.	DESCRIPTION	PART NO.	QTY
C87.138.223.136.123.96.182.183.18 9.221.19.243.73.161.133.105.241.12 .64.63.89.91.77.84.52.132.88.79.75. 114.107.115.14.224.200.135.93.94.9 5.55.60.56.61.100.53.98.97.128.125. 122.127.163.129.144.140.139.145	CAP 0.1uF/50V 0603 ±10% SMT	105-03104-63S	57
C131.	CAP 10UF/16V 1206 ±10% SMT	105-03106-12S	1
C166.167.172.173	CAP 150PF ±5% NPO 0603 SMT	105-03151-63S	4
C51.	CAP 1500PF/50V ±10% 0603 SMT	105-03152-63S	1
C202.203.	CAP 0.015µF ±10% ×7R 0603 SMT	105-03153-63S	2
C184.187.185.186	CAP 0.15UF ±10% ×7R 0603 SMT	105-03154-63S	4
C211.212	CAP 0603 22P 25V +/-20% SMT	105-03220-63S	2
C180.181.24.	CAP 0603 222J/50V ±5% SMT	105-03222-63S	3
C110.190.191.192.193.197.204.205. 208.246.	CAP 0603 22NF ±5% SMT	105-03223-63S	10
C1.4.28.29.106.143.111.117.112.116. 11.34.35.32.8.33.58.59.76.146.141.2 1.237.236.23.7.B37.42.38.CC5.R64. 61.60.	CAP 2.2UF ±10% 0603 SMT	105-03225-63S	33
C217.	CAP 27PF ±5% NPO 0603 SMT	105-03270-63S	1
C153.151	CAP 0603 33P 25V +/-10% SMT	105-03330-63S	2
C218.	CAP 0603 47P/25V ±10% SMT	105-03470-63S	1
C74.120.121.126.174.	CAP 470PF ±5% NPO 0603 SMT	105-03471-63S	5
C134.	CAP 4.7UF/20V 1210 ±10% SMT	105-03475-50S	1
C44.45.36.38.	CAP 475P 16V 0603 ±10% SMT	105-03475-63S	4
C222	CAP 560PF ±50% NPO 0603 SMT	105-03561-63S	1
C179.178.108.69.	CAP 6800PF/50V ×7R ±10% 0603 SMT	105-03682-63S	4
C176	CAP 0603 683 25V +/-10% SMT	105-03683-63S	1
C220.	CAP 820P ±5% 0603 SMT	105-03821-63S	1
C25.142.	E.CAP 10UF/10V (Φ 4x5mm)	106-10106-02S	2
C46.	E.CAP(INSERT) 100UF 10V (Φ 6×5MM)	106-10107-02S	1
C10.16	E.CAP(INSERT) 1000UF/10V (Φ 8X14mm)	106-10108-01S	2
C17.104.54.57.15.49.124.31.85.86.1 30.206.101.48.	E.CAP(INSERT) 47uF 10V (Φ 6×5MM)	106-10476-02S	14
C20.	E.CAP(INSERT) 10uF 16V (Φ 4×5MM)	106-16106-02S	1
C152.80.39.CC16	E.CAP(INSERT) 100UF/16V (Φ 6x5mm)	106-16107-02S	4
C18.30.78.	E.CAP(INSERT) 22UF/16V (Φ 5X5MM)	106-16226-02S	3
C82.5	E.CAP(INSERT) 220UF/16V (Φ 6x11mm)	106-16227-01S	2
C47	E.CAP(INSERT) 33uF 16V (Φ 6.3×5MM)	106-16336-02S	1
C90	E.CAP 3300uF/16V (Φ 10*30mm) 105°C	106-16338-01S	1
C2.40.22.162.CC9.C70	E.CAP(INSERT) 47uF 16V (Φ 6×5MM)	106-16476-03S	6
C3.	E.CAP 470uF/16V (Φ 8X12MM) +/-20%	106-16477-00S	1
C164.	E.CAP 0.22uF 50V (Φ 4×5MM)	106-50224-01S	1
C27.245.71.	E.CAP 2.2uF 50V (Φ 4×5MM)	106-50225-02S	3
C26.42.219.43.228.103.109.234.	E.CAP 4.7UF/50V (Φ 4×7MM)	106-50475-01S	8
C83.92.102.62.6.9.	E.CAP 220UF 10V (Φ 6×5MM)	106-63227-01S	6

## MAIN BOARD SECTION

REF.NO.	DESCRIPTION	PART NO.	QTY
R265.	RES 2.2Ω 1/2W ±5%	107-05022-10S	1
R175 .R5	RES 4.7Ω 1W ±5%	107-05047-20S	2
R159.173.174.15.107.18.139.38.39.5 4.32.36.194.42.43.198.366.90.91.17 9.180.183.184.RR8.FB6.	RES 0603 0Ω ±5% SMT	107-10000-63S	25
RR7.	RES 0805 0Ω ±5% SMT	107-10000-85S	1
R1. 116.	RES 4.7Ω ±5% 0603 SMT	107-10047-63S	2
R30.49.296.65.	RES 4.7Ω ±5% 0805 SMT	107-10047-85S	4
R4.	RES 0603 10R +/-5% SMT	107-10100-63S	1
R260.261.262.263.305.84.233.R59.6 3.55.102.92.154.	RES 0603 100Ω ±5% SMT	107-10101-63S	13
R264.104.	RES 0805 100Ω 1/10W ±5% SMT	107-10101-85S	2
R278.225.148.322.83.57.320.219.53 121.26.14.135.31.232.149.237.RR10	RES 0603 1KΩ ±5% SMT	107-10102-63S	18
RR147.	RES 0805 1KΩ 1/10W ±5% SMT	107-10102-85S	1
RN9.	CN34JT 1K (0603×4 SMT)	107-10102-P4S	1
R228.229.16.208.215.214.204.203.1 86.134.19.117.277.67.185.144.22.29. 94.171.17.33.207.28.141.21.51.131. 196.6.274.352.58.74.76.75.73.150.2. 11.7.143.20.110.156.157.172.218.16 2.282.284.160.158.RR82.6..	RES 0603 10K +/-5% SMT	107-10103-63S	55
R257.258.259.356.357.358.355.256. 161.164.109.137.	RES 0603 100K +/-5% SMT	107-10104-63S	12
R152.151	RES 0603 1M ±5% SMT	107-10105-63S	2
R241.RR13.	RES 12KΩ ±5% 0603 SMT	107-10123-63S	2
R253.254.	RES 120KΩ ±5% 0603 SMT	107-10124-63S	2
R266	RES 0603 150Ω ±5% SMT	107-10151-63S	1
R115.125.255.	RES 0603 1.5K ±5% SMT	107-10152-63S	3
R98.93.97.99.283.79.80.48.	RES 15KΩ ±5% 0603 SMT	107-10153-63S	8
R140	RES 1.8KΩ ±5% 0603 SMT	107-10182-63S	1
R127.	RES 0603 20K ±1% SMT	107-10203-63AS	1
R112.	RES 22Ω ±5% 0603 SMT	107-10220-63S	1
R85.82.295.	RES 22Ω ±5% 0805 SMT	107-10220-85S	3
R199.128.105.7.RR20.	RES 0603 220R +/-5% SMT	107-10221-63S	5
R124.	RES 0603 2.2KΩ ±1% SMT	107-10222-63AS	1
R123.RR81.	RES 0603 2.2KΩ ±5% SMT	107-10222-63S	2
R331.313.311.294.312.118.133.	RES 0603 22K +/-5% SMT	107-10223-63S	7
R105.	RES 0603 270R +/-5% SMT	107-10271-63S	1
R114.	RES 0603 2.7K +/-5% SMT	107-10272-63S	1
R206.235.201.230.	RES 27KΩ ±5% 0603 SMT	107-10273-63S	6
RR77.78.R68.78.86.	RES 0603 33Ω ±5%	107-10330-63S	5
R62	RES 0603 330Ω ±5% SMT	107-10331-63S	1
R202.205.231.242.243.147.234.129. 130.50.	RES 3.3KΩ 0603 ±5% SMT	107-10332-63S	10
R192.153.120.	RES 0603 33K +/-5% SMT	107-10333-63S	3

## MAIN BOARD SECTION

REF.NO.	DESCRIPTION	PART NO.	QTY
RR4	RES 330K $\Omega$ 0603 $\pm$ 5% SMT	107-10334-63S	1
R239.	RES 39K $\pm$ 5% 0603 SMT	107-10393-63S	1
R246.309.310.236.326.	RES 0603 470R +/-5% SMT	107-10471-63S	5
R307.308.	RES 0805 470 $\Omega$ 1/10W $\pm$ 5% SMT	107-10471-85S	2
R106.275.276.301.221.248.250.41.1 21.25.226.281.8.142.108.40.RR2.15 8.B1.	RES 0603 4.7K $\pm$ 5% SMT	107-10472-63S	19
R13.100.101.132.136.238.240.298.3 54.27.119.111.145.146.280.176.47.2 4.315.9.RR3	RES 0603 47K +/-5% SMT	107-10473-63S	21
RR1.146	RES 470K $\Omega$ $\pm$ 5% 0603 SMT	107-10474-63S	2
R169.195.	RES 0603 56R +/-5% SMT	107-10560-63S	2
R10.300.	RES 0603 560 $\Omega$ $\pm$ 5% SMT	107-10561-63S	2
R244.245.290.95.96.288.56.52.69.	RES 0603 5.6K +/-5% SMT	107-10562-63S	9
R168.126.138.	RES 56K $\Omega$ $\pm$ 5% 0603 SMT	107-10563-63S	3
R251.249.	RES 6.8K $\Omega$ $\pm$ 5% 0603 SMT	107-10682-63S	2
R71.72.268.267.31.271.12.	RES 0603 75 $\Omega$ $\pm$ 5% SMT	107-10750-63S	7
FB2.4.	0805 600 $\Omega$ $\pm$ 25%	109-00601-85S	2
L4.6.5.7.2.3.	SL0805-3R3M1R5	109-03315-00S	6
L9.	LCH654-33UH $\pm$ 10%	109-50330-00S	1
FB17.18.19.21.22.L11.10.12.	INDUCTOR (CI1608B2R7K) 2.7uH SMD 0603	109-70027-63S	8
L26.	INDUCTOR 4.7uH SMD 0603 $\pm$ 10%	109-70047-63S	1
L149.150.	INDUCTOR 4.7UH SMD 0805	109-70047-85S	2
L8.FB8.1.FB3.	INDUCTOR 10uH SMD 0805	109-70100-85S	5
SW100.	SWITCH SPVG310300	216-00066-01S	1
SW2.	SLIDE SW SK-12D07VG4 L=4	216-01207-00S	1
J1.J5.CON10.	2P 2.0MM	225-10200-02S	3
CON4.	5P 2.0MM (225-23450-06)	225-10200-50S	1
CON6	3P 2.5MM (232-20255-10)	225-10250-03S	1
CON1	CONNECTOR 1.0 25P DVD-233	225-11103-25S	1
CON12	CHIP BOTTOM 28PIN P=1.0MM	225-30000-28S	1
J3.	2PIN 2.0mm	225-53015-02S	1
L1	RING COIL 220uH H-TYPE	315-00221-00S	1
TUI.	FM/AM TUNER (XF-20FMV-10)	329-08011-01S	1
SS1.	Buzzer 12X6 model: YC1206	114-45000-00S	1
D15.	LED $\Phi$ 3MM RED	102-30000-02S	1
U2..	IC OCP2576 {TO220-5L}	103-02576-00S	1
U9.	IC P06P03LVG SOP-8	103-06030-00S	1
U3.U10.	REGULATOR L7805CV (ST)	103-07805-11S	2
R66.3.	RES 0603 0 $\Omega$ $\pm$ 5% SMT	107-10000-63S	2
R77./R78.	RES 0603 33 $\Omega$ $\pm$ 5%	107-10330-63S	1
R108.	RES 0603 4.7K $\pm$ 5%	107-10472-63S	1
R155.	RES 0603 56R +/-5% SMT	107-10560-63S	1



## MAIN BOARD SECTION

REF.NO.	DESCRIPTION	PART NO.	QTY
SW1-4.	SWITCH SPVG310300	216-00066-01S	4
	2PIN SOCKET WIRE	225-00398-02S	1
CON2	16PIN SOCKET	225-F2340-16S	1
MB TO SW PCB	7×1.05 PVC WIRE 50MM RED	231-70050-02S	1
MB TO SW PCB	7×1.05 PVC WIRE 50MM BLACK	231-70050-10S	1
	ANT WIRE W/SOCKET L=135MM (φ3MM)	232-82135-00S	1
	MOTOR VFF-050SG-11190 long39MM	397-00110-01S	1
	DC FAN 12V (W/2P SOCKET) DFS300612H	449-03010-16S	1
<b>TV MATERIEL</b>	312-30000-787S <b>TV BOARD</b> 313-30000-787S	379-T3000-787	
D18.19.	1206 1N4148 +/-5% SMT 1206	102-04148-12S	2
U30.	IC CHIP UPC1688G NEC	103-01688-00S	1
C157.159.	CAP 0603 100P 25V +/-10% SMT	105-03101-63S	2
C158.	CAP 0603 103 25V +/-10% SMT	105-03103-63S	1
C160	CAP 0.1uF/50V 0603 ±10% SMT	105-03104-63S	1
R163.	RES 22Ω ±5% 0603 SMT	107-10220-63S	1
R155.	RES 0603 220R +/-5% SMT	107-10221-63S	1
FB10.	INDUCTOR 10uH SMD 0805	109-70100-85S	1
	DVD3000TV TUNER BOAR 58.9X31.65X1.6MM D/S	312-30000-787S	1
	W/TV/USB/MP4/BT	379-F3000-04	
	IC 24C01 EEPROM (FLAT PACK)	103-02401-00S	1
	SINGLE SHIELD WIRE 66MM BROWN	231-86066-01S	1
	TV TUNER XF-6A (PAL/NTSC) (H-TYPE)	329-00204-01S	1
	TV JACK (SET 5PCS)	439-D1510-00	1
U3.10.	REGULATOR L7805CV (ST)	103-07805-11S	2
	HEAT SINK WITH TV TUNER "AU3"	461-D3007-03S	
<b>BLUETOOTH MATERIEL</b>	BLUETOOTH MATERIEL	379-F0000-16	
	IC CHIP BU4052BCF ROHM	103-04052-03S	
	9PIN	225-00009-00S	
	9PIN	225-00050-09S	
	7×1.05 PVC WIRE 50MM BLACK	231-70050-10S	
	ANT	232-82062-02S	
	312-30000-789S BLUETOOTH BOARD SMT 313-30000-789S	379-T2225-16	
U2.	IC F4558 SOP(FORCING)	103-04558-26S	1
U3.	CHIP IC XC6204B182MR STO-25	103-06204-18S	1
U5.	IC SMT XC6204B252MR	103-06204-25S	1
U1.	IC SMT XC6204B332MR	103-06204-33S	1
U4.	BLUETOOTH SERIES {GL-8A} 3.3/1.8V 20X13X2	103-GL08A-33S	1

## MAIN BOARD SECTION

REF.NO.	DESCRIPTION	PART NO.	QTY
C24.	CAP 0603 102 25V +/-10% SMT	105-03102-63S	1
C25.22.	CAP 0.1uF/50V 0603 ±10% SMT	105-03104-63S	2
C21.	CAP 1UF/25V 1206 ±10% SMT	105-03105-12S	1
C4.36.27.	CAP 0603 105Z/50V ±10% SMT	105-03105-63S	3
C11.39.30.28.8.37.31.34.23.	CHIP CAP 0603 15P 25V +/-10% SMT	105-03150-63S	9
C10.6.	CAP 150PF ±5% NPO 0603 SMT	105-03151-63S	2
C1.32.14.38.29.13.15.16.18.	CAP 2.2UF ±10% 0603 SMT	105-03225-63S	9
C33.	CAP 22UF 16V 1210 ±10% SMT	105-03226-11S	1
C40.	CAP 0603 330P 25V +/-10% SMT	105-03331-63S	1
C17.19.	CAP 473P ±10% ×7R 0603 SMT	105-03473-63S	2
C7.9.	10u/25V/Y5V/±10% 1206	105-25106-12S	2
C3.20.35.26.	10u/25V/Y5V/±10% 0805	105-25106-85S	4
R6.7.13.	RES 0603 1KΩ ±5% SMT	107-10102-63S	3
R1.2.3.4.	RES 0603 10K +/-5% SMT	107-10103-63S	4
R17.15.14.12.	RES 12KΩ ±5% 0603 SMT	107-10123-63S	4
R21.	RES 0603 150KΩ ±1% SMT	107-10154-63AS	1
R19.	RES 180K ±5% 0603 SMT	107-10184-63S	1
R23.22.	RES 200Ω ±5% 0603 SMT	107-10201-63S	2
R16.	RES 0603 2.2KΩ ±5% SMT	107-10222-63S	1
R5.8.9.11.18.10.	RES 0603 22K +/-5% SMT	107-10223-63S	6
R20.	RES 220KΩ 0603 ±5% SMT	107-10224-63S	1
L4.	1206 600Ω ±10%	109-00601-12S	1
L1.5.	0805 600Ω ±25%	109-00601-85S	2
L3.	INDUCTOR 15n SMD 0603 ±10%	109-70015-63S	1
	BL3000 BLUETOOTH SWITCH 75.2085X36.8046X1.6MM D/S	312-30000-789S	1

## KEY BOARD SECTION

REF.NO.	DESCRIPTION	PART NO.	QTY
	KEY BOARD	379-F2434-04	1
Q1.	SMT RTR040N03TL TSMT3(QV)	101-02300-00S	1
LED3.4.5.6.7.8.17.18.12.13.16.9.2.1 5.14.	2012H183BC/TRS2101BTC 0805 BLUE	102-01701-06S	15
D8.	DIODE IN-4001 (SOD-106) M1.	102-04001-01S	1
D7.	1206 1N4148 +/-5% SMT 1206	102-04148-12S	1
D5.9.10.	IN5819 (SOD-106) SS16	102-05819-02S	3
ZD1.	ZENER DIODE 5.1V +/-5% SMT 1206	102-50051-03S	1
D2.3.	(BAT54S) ZENER DIODE SMD SOD-23	102-50054-12S	2
D4.12.11.DD1.DD4.DD3.DD2.	(BAV99) ZENER DIODE SMD1206 (A7)	102-50099-12S	7
U1.	IC SMT T118.	103-00118-00S	1
U3	IC RC1117-1.8	103-01117-18S	1
U2.	IC SE8117-3.3 SOT-223	103-01117-35S	1
U7.	IC CHIP TCS2003/16P	103-02003-00S	1
U4.	IC CHIP NJM4556A "JRC"	103-04556-00S	1
U6.5.	IC. SMT {STM8306}	103-08306-00S	2
	27MHZ H=2.5MM	104-00027-00S	1
C72.75.78.77.	CAP 0603 102 25V +/-10% SMT	105-03104-402S	4
C2.54.58.52.59.50.60.39.41.43.28.22 .29.53.32.35.36.24.26.23.73.74.70.2 1.20.11.17.14.79.80.12.76.	CAP 0.1uF/50V 0603 ±10% SMT	105-03104-63S	32
C6.	CAP 1UF/25V 1206 ±10% SMT	105-03105-12S	1
C1.56.57.51.37.38.49.16.18.C71.	CAP 10UF/16V 1206 ±10% SMT	105-03106-12S	10
C68.69.	CAP 0603 122P 50V +/-5% SMT	105-03122-63S	2
C65.	CAP 0603 222J/50V ±5% SMT	105-03222-63S	1
C5.4.	CAP 27PF ±5% NPO 0603 SMT	105-03270-63S	2
C7.	CAP 0603 330P 25V +/-10% SMT	105-03331-63S	1
C9.64.	CAP 0.033UF ±10% 0603 SMT	105-03333-63S	2
C61.	CAP 390PF ±5% NPO 0603 SMT	105-03391-63S	1
C62.	CAP 473P ±10% ×7R 0603 SMT	105-03473-63S	1
C67.	CAP 0603 474P 50V +/-5% SMT	105-03474-63S	1
C25.27.55.10.45	CAP 47UF/6.3V 1206 ±10% SMT	105-03476-12S	5
C30.31.	CAP 563PF 50V ±5% 0603 SMT	105-03563-63S	2
C46.47.	CAP 68PF 50V ±5% 0603 SMT	105-03680-63S	2
C13.3.	CAP 100UF/16V 高 5.5 大 6.5 ±10% SMT	105-04107-00S	2
C63.	10u/25V/Y5V/±10% 1206	105-25106-12S	1
C34.	10u/25V/Y5V/±10% 0805	105-25106-85S	1
C19.	4.7UF/25V ±10% 0805	105-25475-85S	1
C66.	CAP 18PF/3KV ±10% 1808 SMT	105-30018-11S	1
L5.	RES 0805 0Ω ±5% SMT	107-10000-85S	1
R35.	RES 0603 10R +/-5% SMT	107-10100-63S	1
R10.34.	RES 0603 100Ω ±5% SMT	107-10101-63S	2
R62.5.7.51.31.33.28.	RES 0603 1KΩ ±5% SMT	107-10102-63S	7
R45.38.40.42.44.14.11.59.	RES 0603 10K +/-5% SMT	107-10103-63S	8
R9.29.19.21.	RES 0603 100K +/-5% SMT	107-10104-63S	4
R3.57.	RES 0603 1M ±5% SMT	107-10105-63S	2

## KEY BOARD SECTION

REF.NO.	DESCRIPTION	PART NO.	QTY
R54.	RES 11K ±5% 0603 SMT	107-10113-63S	1
R63.52.26.	RES 1.2KΩ ±5% 0603 SMT	107-10122-63S	3
R64.	RES 0603 1.5K ±5% SMT	107-10152-63S	1
R71	RES 15KΩ ±5% 0603 SMT	107-10153-63S	1
R30.	RES 1.6K 0603 ±1% SMT	107-10162-63S	1
R65.	RES 1.8KΩ ±5% 0603 SMT	107-10182-63S	1
R15.16.	RES 0603 20K ±5% SMT	107-10203-63S	2
R66.	RES 0603 2.2KΩ ±5% SMT	107-10222-63S	1
R58.	RES 0603 22K +/-5% SMT	107-10223-63S	1
R67.	RES 0603 2.7K +/-5% SMT	107-10272-63S	1
R6.	RES 3K +/-1% 0603 SMT	107-10302-63S	1
R53.	RES 30KΩ ±5% 0603 SMT	107-10303-63S	1
R1.2.22.23.20.27.32.46.55.56.	RES 0603 33Ω ±5%	107-10330-63S	10
RN1.2.	RES 33Ω (0603X4 SMT) +/-5%	107-10330-P4S	2
R8.	RES 0603 33K +/-5% SMT	107-10333-63S	1
R68	RES 0603 3.9K +/-5% SMT	107-10392-63S	2
R39.41.43.	RES 430Ω 0603 ±5% SMT	107-10431-63S	3
R61.50.	RES 0603 470R +/-5% SMT	107-10471-63S	2
R78.75.72.4.79.76.77.80.36.	RES 0603 4.7K ±5% SMT	107-10472-63S	9
R49.13.25.	RES 0603 47K +/-5% SMT	107-10473-63S	3
R69.24.	RES 0603 5.6K +/-5% SMT	107-10562-63S	2
R74.12.	RES 6.8KΩ ±5% 0603 SMT	107-10682-63S	2
R70.	RES 0603 8.2K +/-5% SMT	107-10822-63S	2
R48.	RES 0603 82K +/-5% SMT	107-10823-63S	1
R17.	RES 91K ±5% 0603 SMT	107-10913-63S	1
L20.16.17.18.	INDUCTOR 0603 33Ω ±25%	109-00330-63S	4
L2.	INDUCTOR 0805 600Ω ±25%	109-00601-85S	1
L1.	INDUCTOR (CI1608B2R7K) 2.7uH SMD0603	109-70027-63S	1
L13.	INDUCTOR 10uH/1A {CD43} SMD	109-70100-00S	1
L11.9.3.10.6.7.5.12.L19.	INDUCTOR 10uH SMD 0805	109-70100-85S	9
L4.	INDUCTOR CD43-33UH (4.5X4.0X3.2)	109-70330-12S	1
MOD0.EJJ0.BND0.PLAY/PTY0.EJ0. MUTE0.POWER0.RESET.	TACK SW 1107-00K 2P=4.3mm 250G	216-01108-43S	8
CON2.	30PIN CON 0.5MM CHIP BOTTOM	225-03005-00S	1
CON3.	CHIP CONNECTOR 4P	225-45000-04S	1
CON1.	CONNECTOR 2P SOCKET	225-45001-02S	1
	DVT4504 KB PCB	312-45004-118S	1
T1.	TR-TDK-115	315-00115-00S	1
MIC	CZB4015-OL443-S MIC	114-43000-00S	1
VOL.	DVD10000 ROTRAY ENCODER VOL H=15MM	118-00342-00S	1
AUX	φ 3.5MM JACK 4PIN BLACD	216-00035-10S	1
J3	SWITCH (foot) SY-1150-041	216-01510-03S	1
USB SOCKET	USB socket (BC-9010+USB) "DIP"	225-03970-01S	1
	28PIN SOCKET (FEMALE)	225-F0328-00S	1
CON4.	28PIN SOCKET CON-M28P-1.5	225-M0328-00S	1

**KEY BOARD SECTION**

<b>REF.NO.</b>	<b>DESCRIPTION</b>	<b>PART NO.</b>	<b>QTY</b>
	FIEIBLE PCB 28P	312-03980-394S	1
USB BOARD	PCB USB BOARD 1.4X10X1.2MM D/S	312-45000-522S	1
	4.5" PW045XS1 16:9	327-00045-00S	1
	4.5" TOUCH BOARD ITO.1109-R3.	327-00045-10S	1
IR	PEMOTE SENSOR NJL61H380AF3	329-00380-01S	1
	Copper platinum (16MMX 12MM X0.1MM)	435-45000-00S	1
	4.5TFT BKT	439-45301-00S	1
	INSULATING PVC SHEET 109X67X0.1MM	443-45003-00S	1
IR	CUSHION 5.0 (L) × 5.0 (W) × 4 (H)	581-50504-00S	1

## SERVO BOARD SECTION

REF.NO.	DESCRIPTION	PART NO.	QTY
	312-D8000-670S SMT 313-D3940-004S	379-T2080-05	1
Q2.3	TR CHIP 2SK 3018	101-03018-00S	2
Q1,27	2N3904 SOT23	101-03904-00S	2
Q4 5	TR 3CA8550M (SOD-23) SMT	101-08550-04S	2
D36 35	DIODE IN-4001 (SOD-106) M1.	102-04001-01S	2
D2 37 1,13	1206 1N4148 +/-5% SMT 1206	102-04148-12S	4
D13	ZENER DIODE 4.3V SMT 1206 +/-5%	102-50043-00S	1
U20	IC RC1117-1.8	103-01117-18S	1
U21	IC SE8117-3.3 SOT-223	103-01117-35S	1
U1	IC MT1389DE/H (TQFP-256PIN)	103-01389-00S	1
U7	IC NC/AT24C02N-10SC (SOP-8)	103-02402-00S	1
U18	IC AAI5954	103-05954-00AS	1
U9	IC BA6289F (SOP8)	103-06289-00S	1
U3	IC W986416DH-6 TSSOP-54PIN	103-06416-00S	1
U6	IC S29AL016M ALRIO	103-29016-00S	1
Y1.	HC49S 27.000MHZ 20PF 30PPM	104-00027-00S	1
C197 196	CAP 0603 100P 25V +/-10% SMT	105-03101-63S	2
C16 13,CB3,4,15,16,C77,C78	CAP 0603 102 25V +/-10% SMT	105-03102-63S	8
C47,46,41,40,29,5,82,81,80,79,28,27,26,25,24,20,2,194,175,174,76,83,17,168,167,166,9,58,70,60,75,162,12,44,63,18,71,73,72,69,74,52,51,55,64,56,48, 53,31,49,59,6,50,61,67.54.C B13,8,11,10,17,12,1,6,2,7,	CAP 0.1uF/50V 0603 ±10% SMT	105-03104-63S	66
C37 36 35 34 33	CAP 0603 105Z/50V ±10% SMT	105-03105-63S	5
C38	CAP 120PF ±5% NPO 0603 SMT	105-03121-63S	1
C170 169	CAP 150PF ±5% NPO 0603 SMT	105-03151-63S	2
C68	CAP 0.015µF ±10% ×7R 0603 SMT	105-03153-63S	1
C7	CAP 20P ±5% NPO 0603 SMT	105-03200-63S	1
C198	CAP 0603 22P 25V +/-20% SMT	105-03220-63S	1
C4 15 10	CAP 0603 222J/50V ±5% SMT	105-03222-63S	3
C177 176	CAP 27PF ±5% NPO 0603 SMT	105-03270-63S	2
C66 65	CAP 0603 330P 25V +/-10% SMT	105-03331-63S	2
C21	CAP 0.033UF ±10% 0603 SMT	105-03333-63S	1
C1	CAP 390PF ±5% NPO 0603 SMT	105-03391-63S	1
C184 183	CAP 470PF ±5% NPO 0603 SMT	105-03471-63S	2
C23 22	CAP 473P ±10% ×7R 0603 SMT	105-03473-63S	2
C14	CAP 0603 474P 50V +/-5% SMT	105-03474-63S	1
C204	CAP 56PF ±5% NPO 0603 SMT	105-03560-63S	1
CB9	CAP 5600PF ±10% ×7R 0603 SMT	105-03562-63S	1
CE60 58 9 7 56 C8 19 11	E.CAP 10UF/10V (Φ 4x5mm)	106-10106-02S	8
CE11 12 13 6 2 18 19,8,3	E.CAP 47uF 10V (Φ 6×5MM)	106-10476-02S	9
C42,CE51,15,16,50,49,14	E.CAP 100UF/16V (Φ 6x5mm)	106-16107-02S	7
CE55 10 1 48 52 54 132	E.CAP 220UF 10V (Φ 6×5MM)	106-63227-01S	7
R8 66 65 63 52 50 36 32 211 210,326,JP1	RES 0603 0Ω ±5% SMT	107-10000-63S	12

## SERVO BOARD SECTION

REF.NO.	DESCRIPTION	PART NO.	QTY
R216,215,214,217	RES 0603 1Ω ±5% SMT	107-10010-63S	4
R19	RES 0805 1Ω 1/10W ±5% SMT	107-10010-85S	1
R212 213	RES 4.7Ω ±5% 0603 SMT	107-10047-63S	2
R6	RES 6.8Ω ±5% 0603 SMT	107-10068-63S	1
R275 277 265	RES 0603 100Ω ±5% SMT	107-10101-63S	3
R232 231 222 37 24 10	RES 0603 1KΩ ±5% SMT	107-10102-63S	6
R67 49 33 13 235 230 227 225 223 207 69 68 208	RES 0603 10K +/-5% SMT	107-10103-63S	13
R234 209 206 12	RES 0603 100K +/-5% SMT	107-10104-63S	4
R278	RES 110Ω ±1% 0603 SMT	107-10111-63S	1
R54 53 48 15	RES 15KΩ ±5% 0603 SMT	107-10153-63S	4
R18,16	RES 0603 150KΩ ±5% SMT	107-10154-63S	2
R46	RES 0603 18KΩ ±5% SMT	107-10183-63S	1
R3,5	RES 180K ±5% 0603 SMT	107-10184-63S	2
R226 224 45 221	RES 0603 20K ±5% SMT	107-10203-63S	4
R299	RES 0603 220R +/-5% SMT	107-10221-63S	1
R62 60 59 61	RES 0603 33Ω ±5%	107-10330-63S	4
RN2,3	RES 33Ω (0603X4 SMT) +/-5%	107-10330-P4S	2
R25 23 71 27	RES 0603 4.7K ±5% SMT	107-10472-63S	4
R270,284	RES 0603 47K +/-5% SMT	107-10473-63S	2
R22	RES 0603 560Ω ±5% SMT	107-10561-63S	1
R14 11	RES 680KΩ ±5% 0603 SMT	107-10684-63S	2
R276 244	RES 0603 75Ω ±5% SMT	107-10750-63S	2
R7	RES 750KΩ ±5% 0603 SMT	107-10754-63S	1
L3 40 55 76 4 1 54 53 9 41 42 15 50,5,6,7,8,10	INDUCTOR 0805 600Ω ±25%	109-00601-85S	18
L63	INDUCTOR (CI1608B2R7K) 2.7uH SMD 0603	109-70027-63S	1
SW1	SWITCH TC-0070-1	216-00033-04S	1
CON1	DVD-244 CON CHIP 25PIN P=0.1MM FPC BOT	225-00244-25S	1
CON3	DVD-234-CON CHIP 24PIN P=0.5MM FPC BOT	225-02340-24S	1
CON4	4PIN CLUBFOOT SOCKET 2.0MM	225-53015-20S	1
	3PIN CLUBFOOT SOCKET 2.0MM	225-53015-30S	1
	DVD2443.10.9.16 SERVO115.5x82.1x1.2 D/S	312-D8000-670S	1

## BLUETOOTH BOARD

REF.NO.	DESCRIPTION	PART NO.	QTY
U2.	IC F4558 SOP(FORCING)	103-04558-26S	1
U3.	CHIP IC XC6204B182MR STO-25	103-06204-18S	1
U5	IC SMT XC6204B252MR	103-06204-25S	1
U1	IC SMT XC6204B332MR	103-06204-33S	1
U4	BLUETOOTH SERIES {GL-8A} 3.3/1.8V 20X13X2	103-GL08A-33S	1
C24.	CAP 0603 102 25V +/-10% SMT	105-03102-63S	1
C25.22.	CAP 0.1uF/50V 0603 ±10% SMT	105-03104-63S	2
C21.	CAP 1UF/25V 1206 ±10% SMT	105-03105-12S	1
C4.36.27.	CAP 0603 105Z/50V ±10% SMT	105-03105-63S	3
C11.39.30.28.8.37.31.34.23.	CHIP CAP 0603 15P 25V +/-10% SMT	105-03150-63S	9
C10.6	CAP 150PF ±5% NPO 0603 SMT	105-03151-63S	2
C1.32.14.38.29.13.15.16.18.	CAP 2.2UF ±10% 0603 SMT	105-03225-63S	9
C33.	CAP 22UF 16V 1210 ±10% SMT	105-03226-11S	1
C40.	CAP 0603 330P 25V +/-10% SMT	105-03331-63S	1
C17.19.	CAP 473P ±10% ×7R 0603 SMT	105-03473-63S	2
C7.9	10u/25V/Y5V/±10% 1206	105-25106-12S	2
C3.20.35.26.	10u/25V/Y5V/±10% 0805	105-25106-85S	4
R6.7.13.	RES 0603 1KΩ ±5% SMT	107-10102-63S	3
R1.2.3.4.	RES 0603 10K +/-5% SMT	107-10103-63S	4
R17.15.14.12.	RES 12KΩ ±5% 0603 SMT	107-10123-63S	4
R21.	RES 0603 150KΩ ±1% SMT	107-10154-63AS	1
R19.	RES 180K ±5% 0603 SMT	107-10184-63S	1
R23.22.	RES 200Ω ±5% 0603 SMT	107-10201-63S	2
R16.	RES 0603 2.2KΩ ±5% SMT	107-10222-63S	1
R5.8.9.11.18.10.	RES 0603 22K +/-5% SMT	107-10223-63S	2
R20.	RES 220KΩ 0603 ±5% SMT	107-10224-63S	1
L4.	1206 600Ω ±10%	109-00601-12S	1
L1.5.	0805 600Ω ±25%	109-00601-85S	2
L3.	INDUCTOR 15n SMD 0603 ±10%)	109-70015-63S	1
	75.2085X36.8046X1.6MM D/S 2007-06-30	312-30000-789S	1
	9PIN 2.0MM	225-00050-09S	1
	7×1.05 PVC WIRE 50MM BLACK	231-70050-10S	1
	ANT	232-82062-02S	1



# TROUBLE SHOOTING

Before going through the check list, check wiring connection. If any of the problems persist after check list has been made, consult your nearest service dealer.

SYMPTOM	CAUSE	SOLUTION
No power	The car ignition switch is not on	If the power supply is properly connected to the car accessory terminal, switch the ignition key to "ACC"
	The fuse is blown	Replace the fuse
Disc can not be loaded or ejected	Presence of disc inside the player.	Remove the disc in the player, then put a new one
	Inserting the disc in reverse direction	Insert the compact disc with the label facing upward
	The disc is extremely dirty or defective	Clean the disc or try to play a new one
	Temperature inside the car is too high	Cool off or until the ambient temperature return to normal
Television/video image appears black-white	The color system is set incorrectly	Please switch to correct color system from menu
No television/video image appears	The unit is not connected to the parking brake detection switch	Make proper connection according to "wire connection"
	The parking brake is not engaged	For safety reasons no television /video images are displayed while the vehicle is moving. Engaging the parking brake will cause images to be displayed.
No color in picture	The disc format is not according to the TV-set used (PAL/NTSC)	Please the television mode of the choice accommodation
JPEG disc can not be played back	No JPEG files are recorded on the disc.	Change the disc
	JPEG files are not recorded in a compliant formant	Change the disc Record JPEG files using a compliant application
The operation keys do not work	The built-in microcomputer is not operating properly due to noise	Press the RESET button. Front panel is not properly fixed into its place
The radio does not work	The antenna cable is not connected	Insert the antenna cable firmly
	The signals are too weak	Select a station manually