

1. Install the CRT with the torque of 2--2.5 N.m.
 2. Connect wires according to the final wiring diagram and check if the wired connectors are connected correctly and fixedly, and the high voltage cap and CRT RGB PCB are mounted.
Check if the connector of the deflection yoke is inserted in the socket TJC2-5A.
 3. Tie the degaussing coil with the wire clip XJ-100(18) to make the wire far from high temperature components.
Reinstall the back cover after inspection and ensuring O.K.
 4. Insert the wired clip A into the slot on the back cover, then install the cover board(17)
3. Check and make sure that all control buttons can work flexibly and normally.

14		Tapping screw 5X30H AHCh	4	
13		Tapping screw 4X16BTHCh	4	
12		Tapping screw 3X10KTHCh	2	
11		Plasticine	0.5g	
10	T/JU8.942.284	Washer	4	
9	T/JU8.942.283	Notched washer	4	
8		Rubber spacer DP-2	4	
7		Seal cap	1	
6		Back cover	1	
5		Front cover assembly	1	
4		Side-set AV terminals	1	
3		CRT RGB PCB assembly	1	
2		Main PCB assembly	1	
1		CRT assembly	1	
Serial No.	Code	Parts	Quantity	Remarks

21	Speaker	2					
20	Rear plate	1					
19	AV plate	1					
18	Wire clip XJ-100	1		Designed by			
17	Cover board	1		Checked by			
16	Wire clip A	1		Processed by			
15	Tapping screw 3X12VwAHCh	4		Standardized by			
				Approved by			

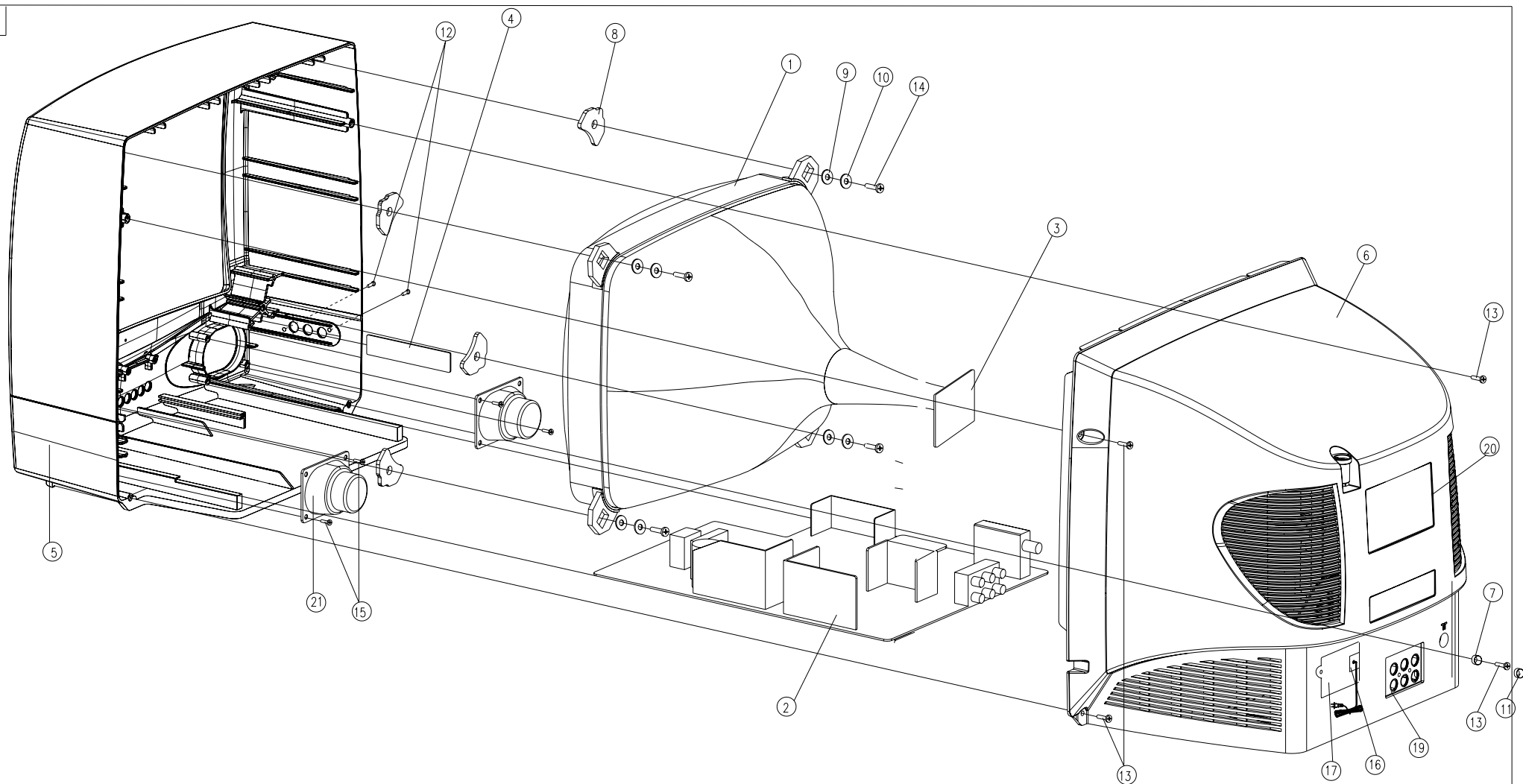
Assembly Drawing

Level Mark Weight Proportion

14C27

Tracing

Width: A3



1. Install the CRT with the torque of 2--2.5 N.m.
2. Connect wires according to the final wiring diagram and check if the wired connectors are connected correctly and fixedly, and the high voltage cap and CRT RGB PCB are mounted.
Check if the connector of the deflection yoke is inserted in the socket TJC2-5A.
3. Tie the degaussing coil with the wire clip XJ-100(18) to make the wire far from high temperature components.
Reinstall the back cover after inspection and ensuring O.K.
4. Insert the wired clip A into the slot on the back cover, then install the cover board(17)
3. Check and make sure that all control buttons can work flexibly and normally.

14		Tapping screw 5X30H AHCh	4	
13		Tapping screw 4X16BTHCh	4	
12		Tapping screw 3X10KTHCh	2	
11		Plasticine	0.5g	
10	T/JUR942.284	Washer	4	
9	T/JUR942.283	Notched washer	4	
8		Rubber spacer DP-2	4	
7		Seal cap	1	
6		Back cover	1	
5		Front cover assembly	1	
4		Side-set AV terminals	1	
3		CRT RGB PCB assembly	1	
2		Main PCB assembly	1	
1		CRT assembly	1	
Serial No.	Code	Parts	Quantity	Remarks

21	Speaker	2					
20	Rear plate	1					
19	AV plate	1					
18	Wire clip XJ-100	1		Designed by			
17	Cover board	1		Checked by			
16	Wire clip A	1		Processed by			
15	Tapping screw 3X12VwAHCh	4		Standardized by			
				Approved by			

Assembly Drawing

Level Mark Weight Proportion

14C27

Tracing

Width: A3