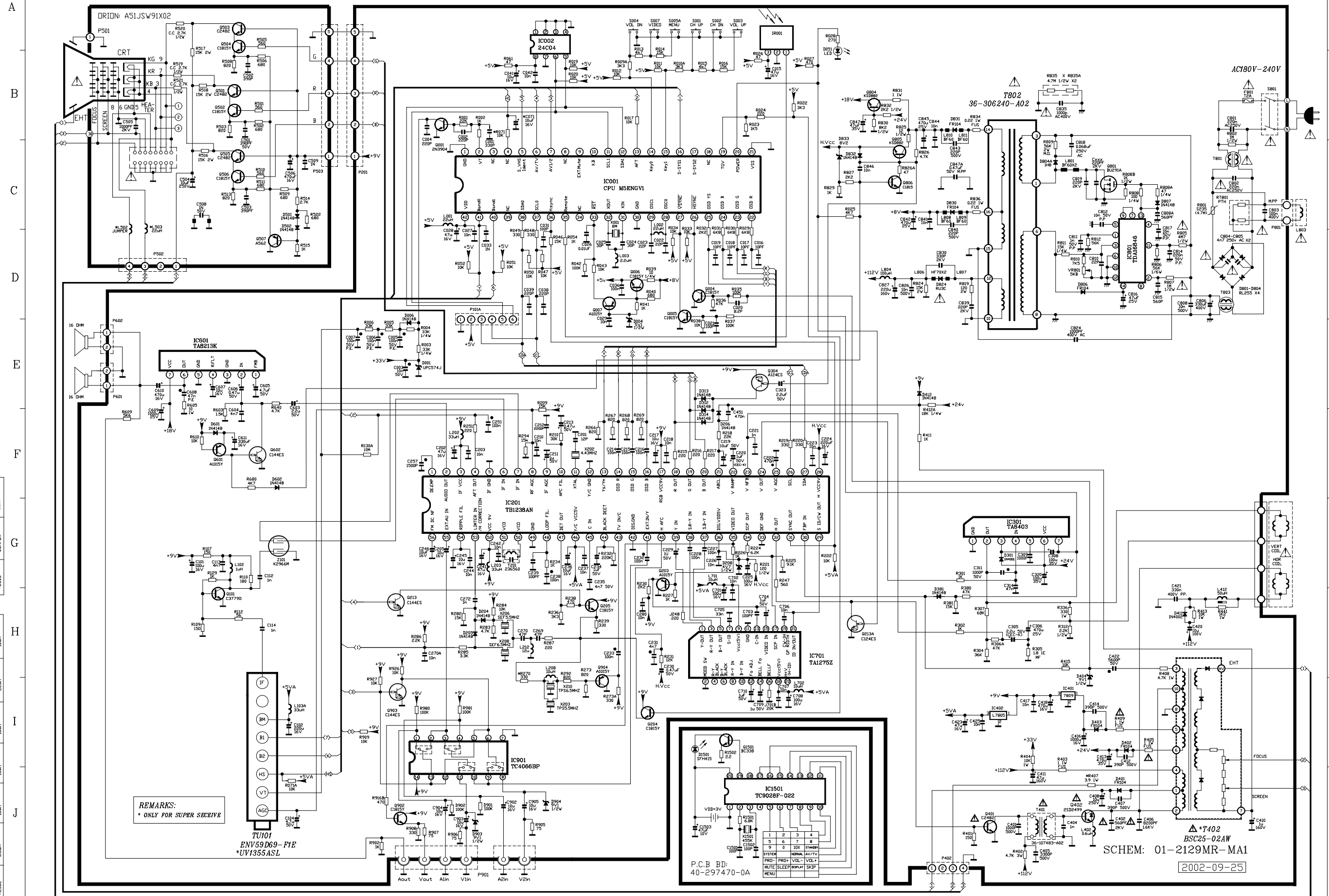


MODEL : TV-21" PAL SECAM B/G D/K (NTSC 3.58/4.43AV) AV IN-2

CIRCUIT CONSTANTS AND CIRCUIT ITSELF ARE SUBJECT TO CHANGE WITHOUT NOTICE



REMARKS: *FBT CHANGE OF CRT "DR10N"

ITEM	FBI	JF0501-1909A	BSC25-02AV
NR47	2.2 1W	3.9 1W	
NR52	5.6 1W	22 1W	
NR53	JUMPER		

REMARKS:
* ONLY FOR SUPER RECEIVE

TU101
ENV59D69 - FIE
*UV1355ASL

P.C.B BD:
40-297470-0A

*T402
BSC25-02AV
SCHEM: 01-2129MR-MA1

2002-09-25

REMARKS: *CRT CHANGE

ITEM	DR10N	HITACHI	SAMSUNG	JCT	NOVEL	SAMTELU
NR37	AS1J5W9202	AS1S16313	AS1K0K9201	AS1J516303	303722-1001	AS1K0G30X
NR34	3K 1/6W	2K 1/6W	2K 1/6W	6K 1/6W	6K 1/6W	6K 1/6W
NR36	47K 1/6W	JUMPER	JUMPER	47K 1/6W	47K 1/6W	47K 1/6W
NR31	IN 50V	IN 100V	IN 50V	IN 50V	IN 50V	IN 50V
NR32	2.2K 1/2W	2.2K 1/2W	30K 1/6W	2.2K 1/2W	2.2K 1/2W	2.2K 1/2W
NR46	2.2 1W	1 1W	1 1W	2.2 1W	2.2 1W	1 1W
NR42	500PF 2KV	10N 1K6V	10N 1K6V	900PF 1K6V	33PF 2KV	33PF 2KV
NR43	33N 40V	33N 40V	33N 40V	33N 40V	33N 40V	33N 40V
NR41	50 1W	39 1W	50 1W	45 1W	45 1W	45 1W
NR33	JUMPER	64 1W	JUMPER	20 1W	JUMPER	JUMPER
NR35	22 1W	22 1W	22 1W	22 1W	22 1W	22 1W
NR32	5.6 1W	10 1W	10 1W	10 1W	10 1W	10 1W