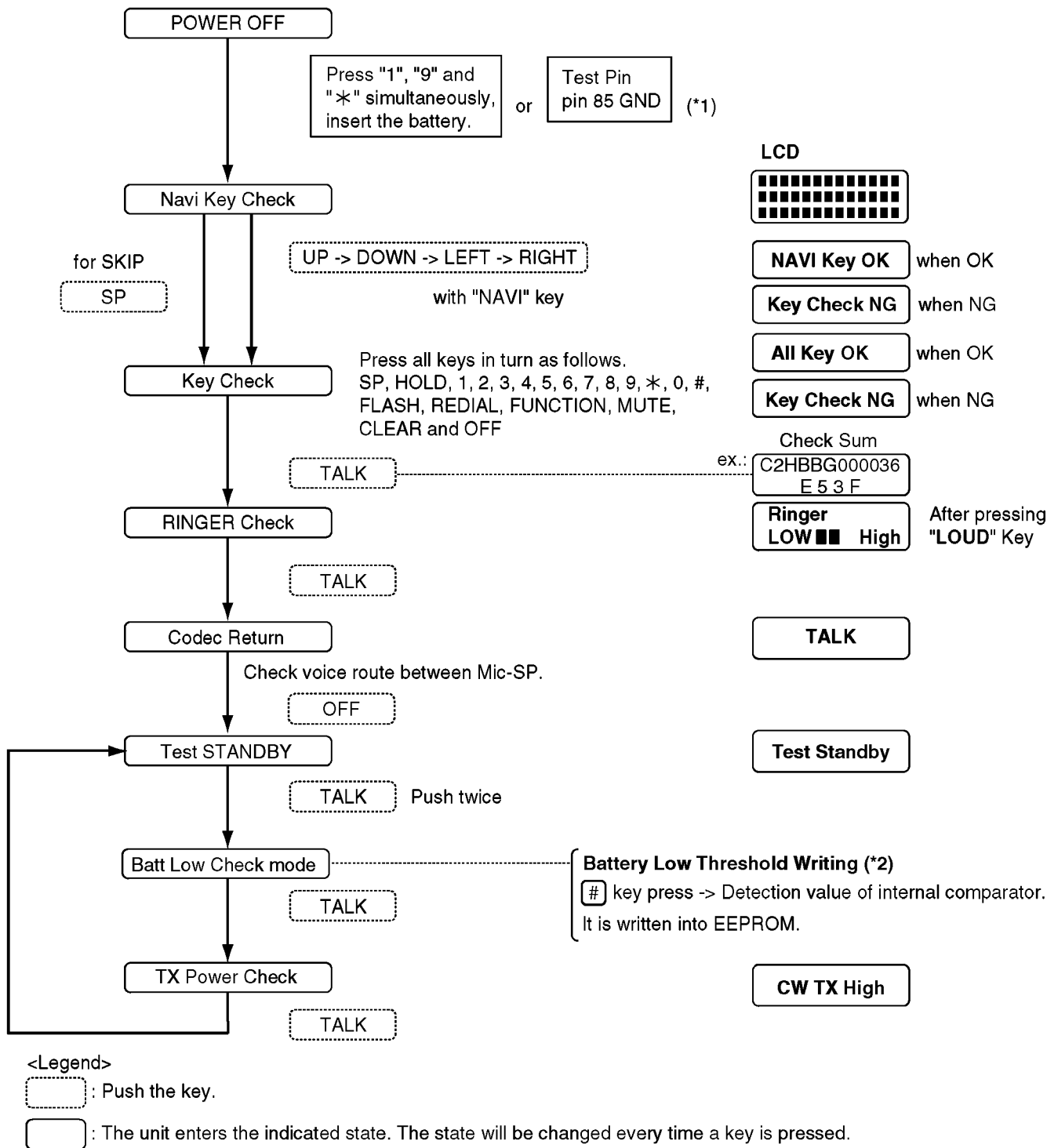


11.3. Test mode flow chart for Handset



(*1) See **Handset Reference Drawing** (P.47).---Should return to OPEN after entering the Test mode.

(*2) See **Adjustment Battery Low Detector Voltage** (P.45).

11.4. X201 Check

The confirmation is made under the "TX Power Check" mode of TEST MODE.

Equipment: Frequency counter

TP for measurement: TP_ANT

Measure range: 2472.64550 MHz ± 5 kHz (1ch) at Test Standby mode in **TEST MODE** (P.42).

11.5. Adjustment Battery Low Detector Voltage

After replacing handset's DSP (IC201), Re-writing Battery Low voltage to EEPROM is required.

<How to re-write>

1. Set 3.9V for DC power supply.
2. Enter the test mode (Refer to **Test mode flow chart for Handset** (P.44))
3. Follow to "Batt Low Check" mode..... (CW Tx High is displayed on LCD)
4. Set 3.5V for DC power supply.

Note: Check voltage at battery connector, because some voltage drop is happened, using long or thin cable.

5. Press "#" key to write voltage value in EEPROM.
6. Turn power off. Then this value is available.