

[CONTENTS]

○ SECTION 1. GENERAL

- SERVICING PRECAUTIONS 1-2
- ESD PRECAUTIONS 1-4
- SPECIFICATIONS 1-5
- LOCATION OF CUSTOMER CONTROLS 1-6

○ SECTION 2. AUDIO PART

- ELECTRICAL TROUBLESHOOTING GUIDE 2-1
- BLOCK DIAGRAM 2-5
- SCHEMATIC DIAGRAMS 2-7
- WIRING DIAGRAM 2-19
- VOLTAGE SHEET ((IC&TR) 2-21
- PRINTED CIRCUIT DIAGRAMS 2-25

○ SECTION 3. DVD PART

- ELECTRICAL TROUBLESHOOTING GUIDE 3-1
- DETAILS AND WAVEFORMS ON SYSTEM TEST AND DEBUGGING 3-8
- DVD PART SCHEMATIC DIAGRAMS 3-21
- VOLTAGE SHEET (IC & TR) 3-27
- PRINTED CIRCUIT DIAGRAM 3-29

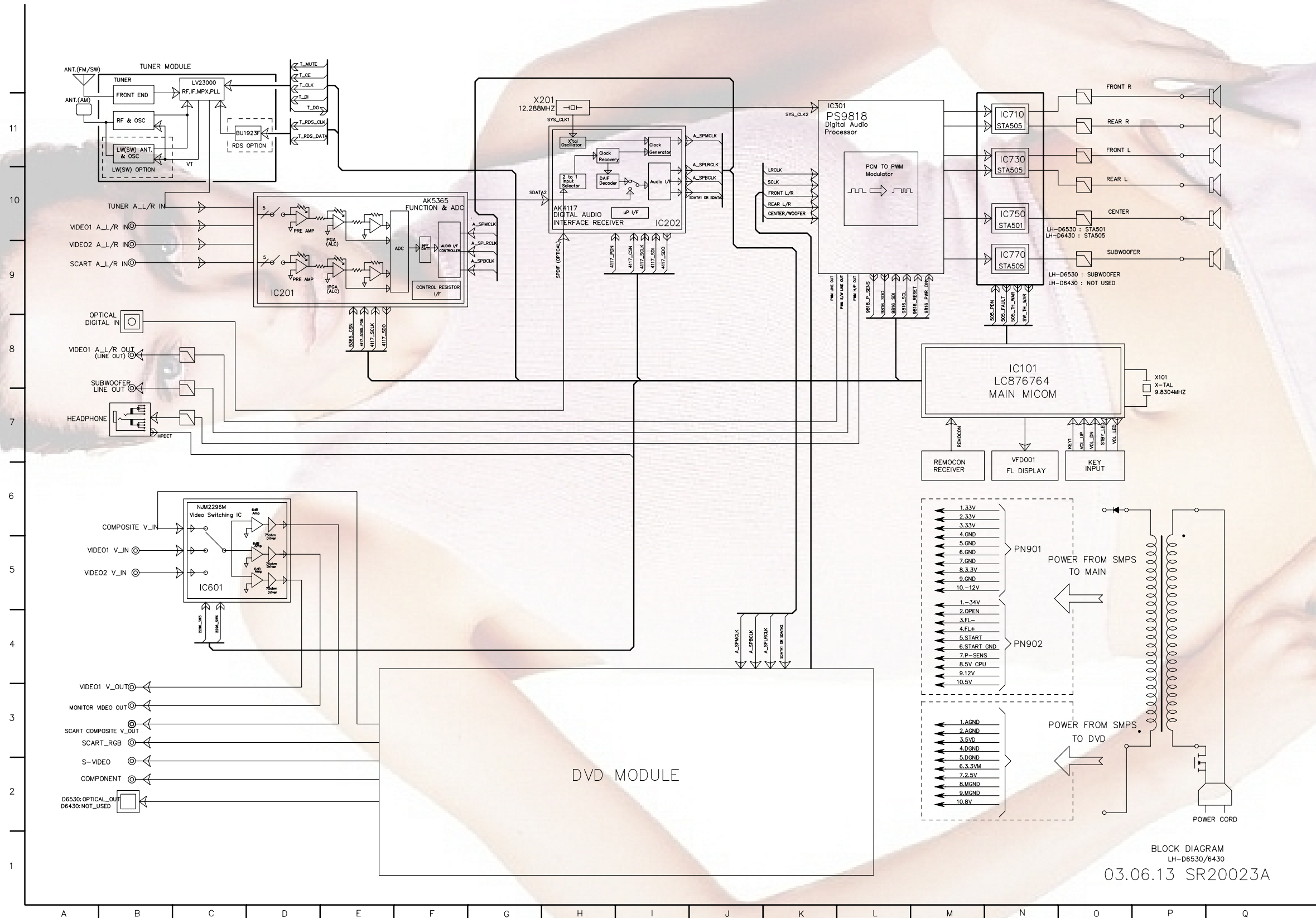
○ SECTION 4. EXPLODED VIEWS 4-1

○ SECTION 5. SPEAKER PART 5-1

○ SECTION 6. SPEAKER PART 6-1

- ELECTRICAL TROUBLESHOOTING GUIDE 6-1
- BLOCK DIAGRAM 6-7
- SCHEMATIC DIAGRAMS 6-9
- WIRING DIAGRAM 6-15
- PRINTED CIRCUIT DIAGRAM 6-17
- SPEAKER EXPLODED VIEWS 6-23
- REPLACEMENT PARTS LIST 6-35

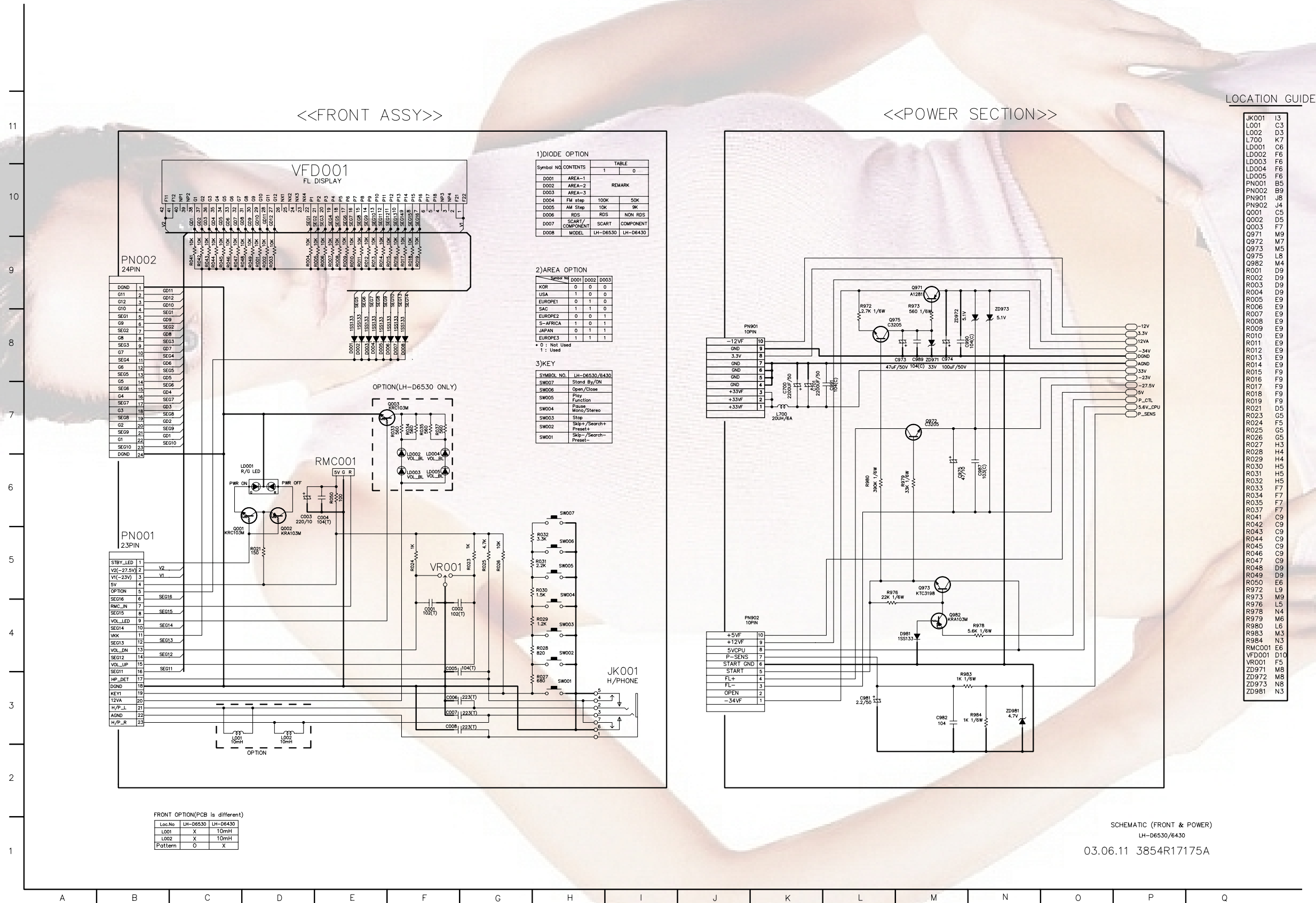
□ BLOCK DIAGRAM



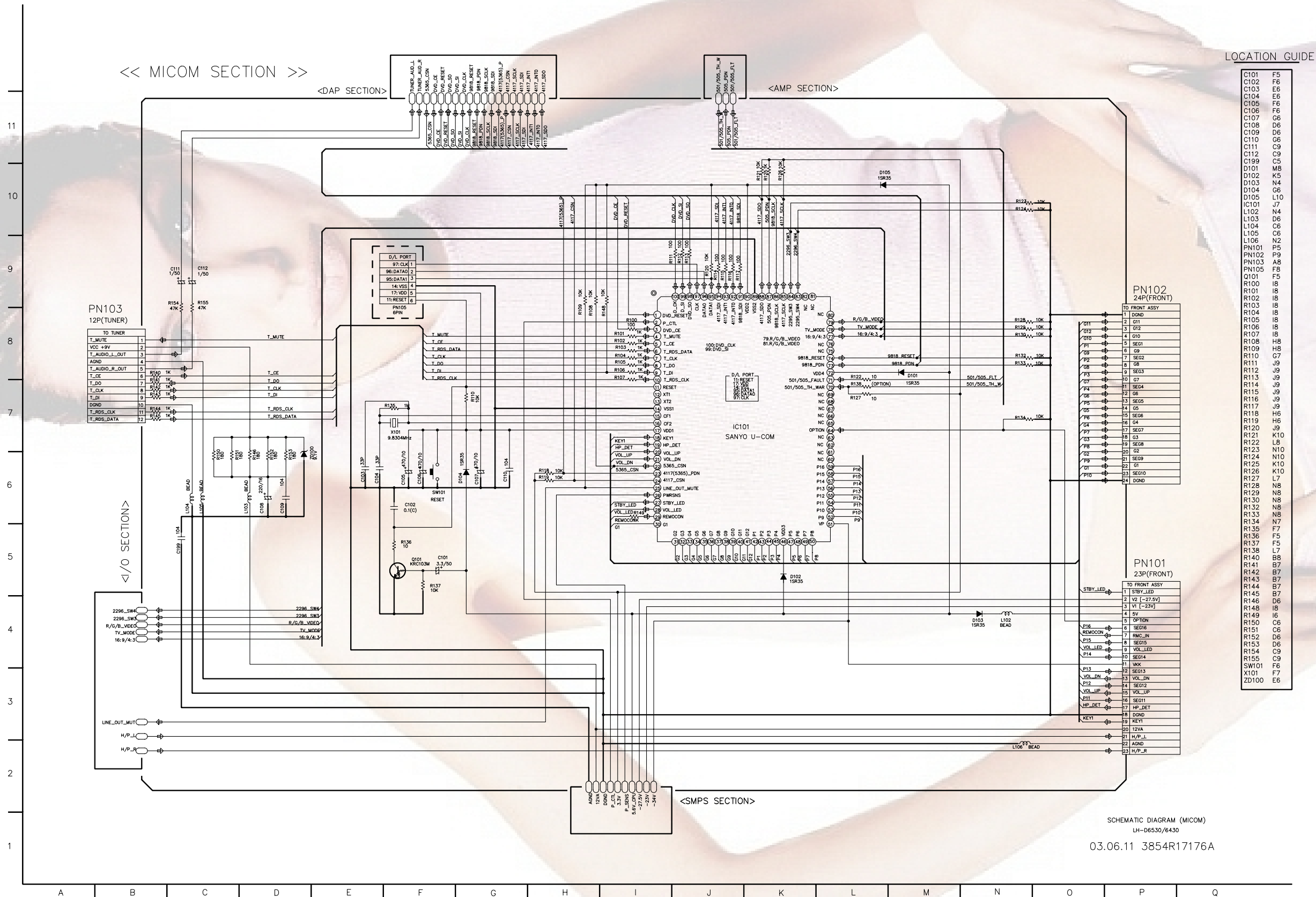
BLOCK DIAGRAM
LH-D6530/6430
03.06.13 SR20023A

SCHEMATIC DIAGRAMS

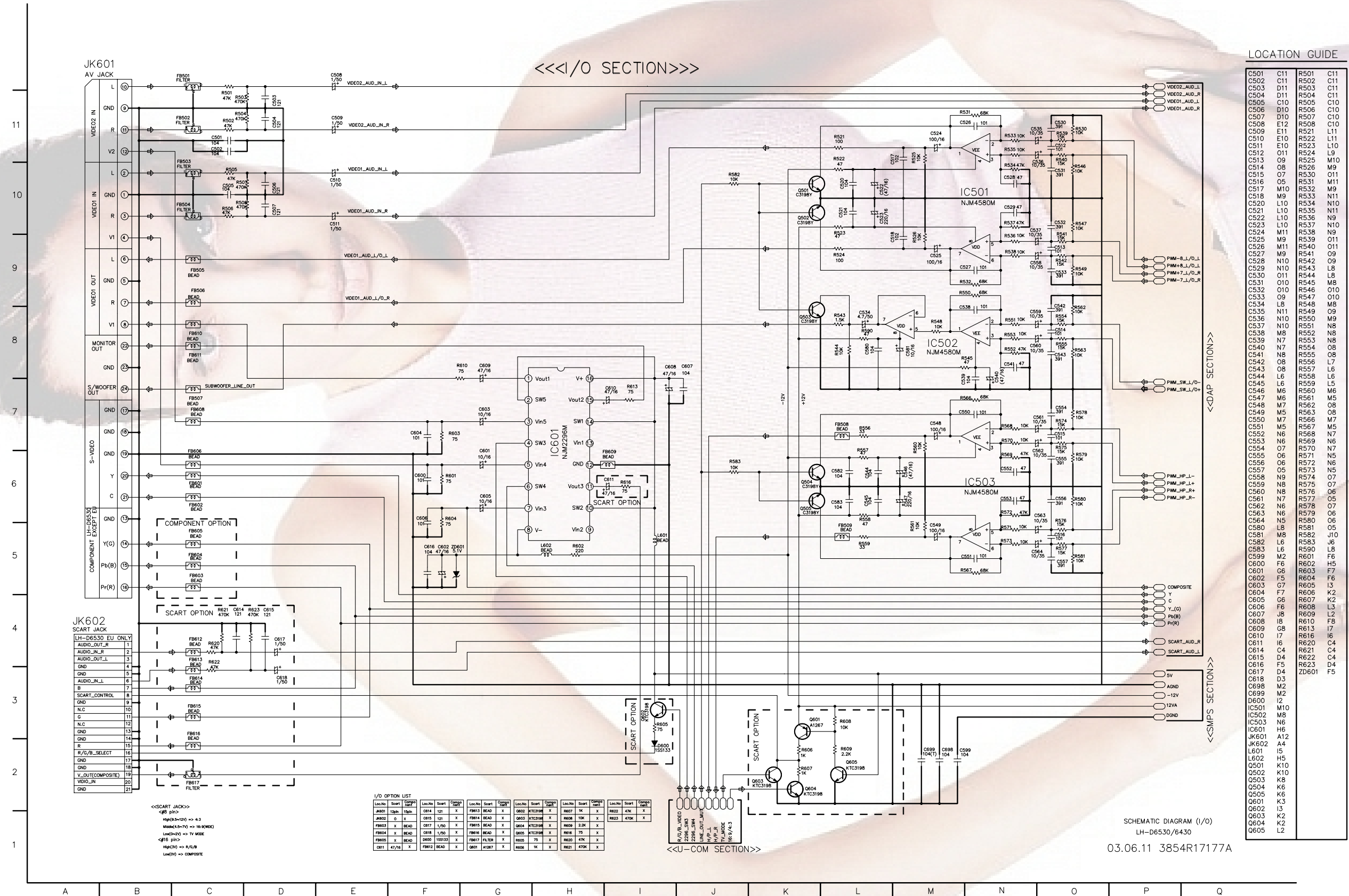
FRONT & POWER SCHEMATIC DIAGRAM



• MICOM SCHEMATIC DIAGRAM



I/O SCHEMATIC DIAGRAM

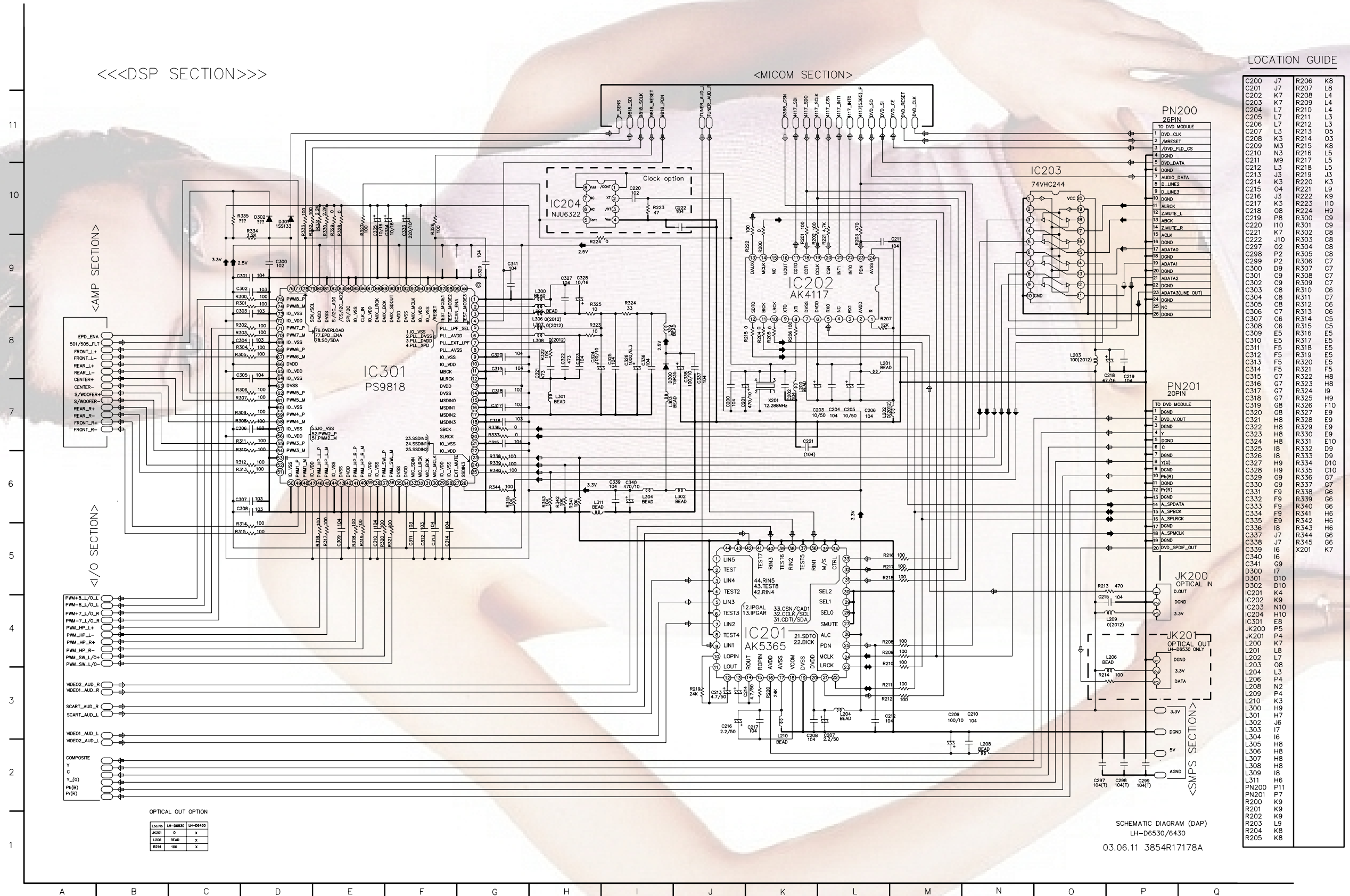


I/O OPTION LIST

Loc.No	Start	Comp	Loc.No	Start	Comp	Loc.No	Start	Comp	Loc.No	Start	Comp	Loc.No	Start	Comp
JK601	15pin	15pin	FB612	BEAD	X	Q603	KTC3198	X	R607	1K	X	R622	47K	X
JK602	O	X	Q615	121	X	FB614	BEAD	X	Q605	KTC3198	X	R608	10K	X
FB603	X	BEAD	Q617	1/50	X	FB615	BEAD	X	Q604	KTC3198	X	R609	2.2K	X
FB604	X	BEAD	Q618	1/50	X	FB616	BEAD	X	Q605	KTC3198	X	R616	75	X
FB605	X	BEAD	D600	153133	X	FB617	FILTER	X	R605	75	X	R620	47K	X
Q611	47/16	X	FB612	BEAD	X	Q601	A1267	X	R606	1K	X	R621	470K	X

<<SCART JACK>>
 #8 pin
 #9 pin (1-3)
 #9 pin (4-7) => 10/18/20
 Low(=0) => TV MODE
 #18 pin
 #19 pin => R/S/B
 Low(=0) => COMPOSITE

• DAP SCHEMATIC DIAGRAM



LOCATION GUIDE

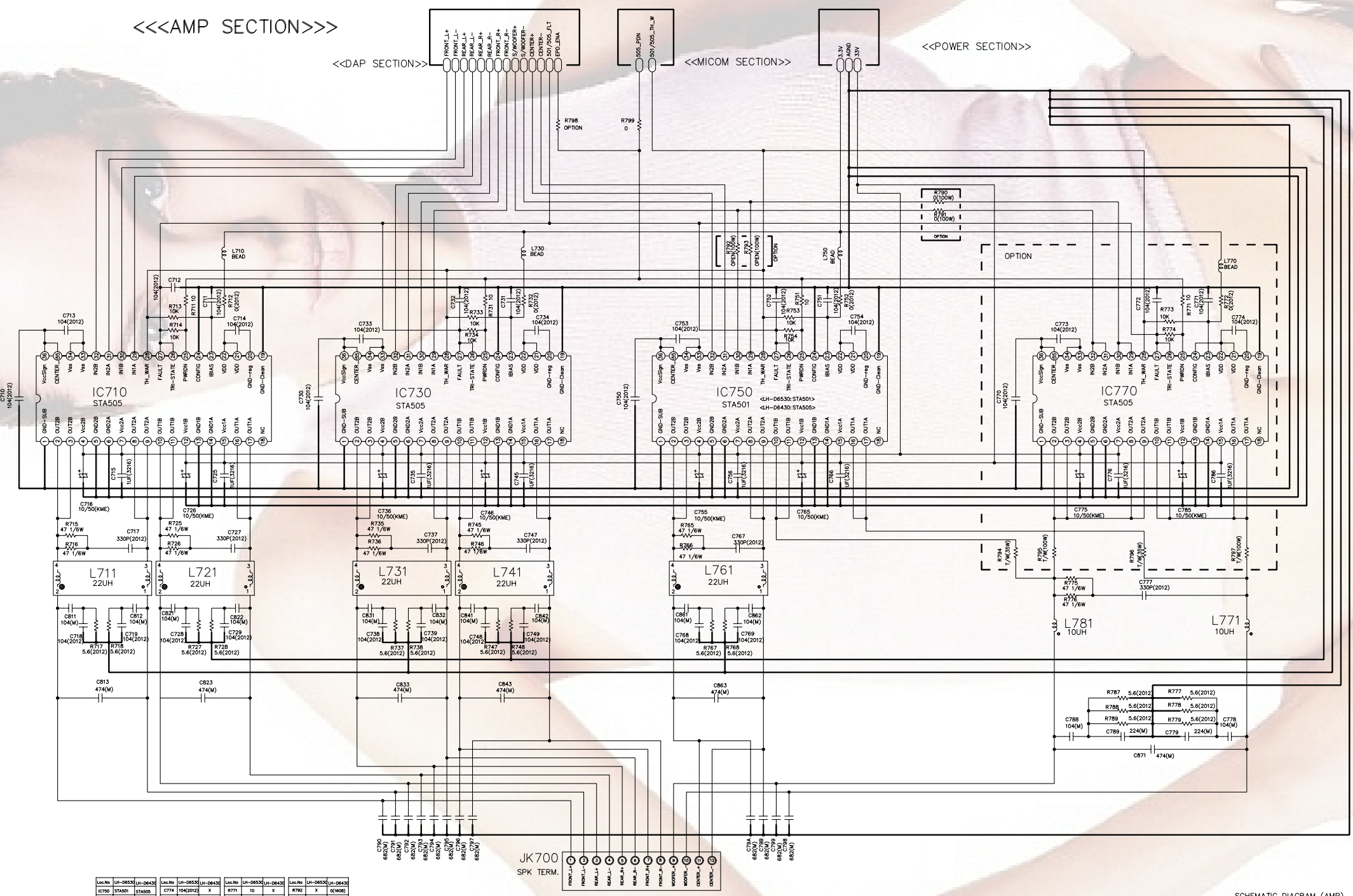
C200	J7	R206	K8
C201	J7	R207	L8
C202	K7	R208	L4
C203	K7	R209	L4
C204	L7	R210	L4
C205	L7	R211	L3
C206	L7	R212	L3
C207	L3	R213	O5
C208	K3	R214	O3
C209	M3	R215	K8
C210	N3	R216	L5
C211	M9	R217	L5
C212	L3	R218	L5
C213	J3	R219	J3
C214	K3	R220	K3
C215	O4	R221	L9
C216	J3	R222	K9
C217	K3	R223	I10
C218	O8	R224	H9
C219	P8	R300	O9
C220	I10	R301	O9
C221	K7	R302	O8
C222	J10	R303	O8
C223	O2	R304	C8
C224	P2	R305	C8
C225	P2	R306	C7
C226	D9	R307	C7
C227	O9	R308	C7
C228	O9	R309	C7
C229	C8	R310	C6
C230	C8	R311	C7
C231	C8	R312	C6
C232	C7	R313	C6
C233	O6	R314	C5
C234	O6	R315	C5
C235	E5	R316	C5
C236	E5	R317	E5
C237	F5	R318	E5
C238	F5	R319	E5
C239	F5	R320	E5
C240	F5	R321	F5
C241	G7	R322	H8
C242	G7	R323	H8
C243	G7	R324	I9
C244	G8	R325	H9
C245	G8	R326	F10
C246	H8	R327	E9
C247	H8	R328	E9
C248	H8	R329	E9
C249	H8	R330	E9
C250	G9	R331	E10
C251	I8	R332	D9
C252	I8	R333	D9
C253	H9	R334	D10
C254	H9	R335	C10
C255	G9	R336	G7
C256	G9	R337	G7
C257	F9	R338	G6
C258	F9	R339	G6
C259	F9	R340	G6
C260	F9	R341	H6
C261	E9	R342	H6
C262	I8	R343	H6
C263	J7	R344	G6
C264	J7	R345	G6
C265	I6	X201	K7

SCHEMATIC DIAGRAM (DAP)
LH-D6530/6430
03.06.11 3854R17178A

• AMP SCHEMATIC DIAGRAM

LOCATION GUIDE

C710	A7	R715	B6
C711	D8	R716	B5
C712	C9	R717	B4
C713	B8	R718	B4
C714	D8	R725	C6
C715	B6	R726	C5
C716	B6	R727	C4
C717	C6	R728	D4
C718	B4	R731	G8
C719	C4	R732	G8
C725	D6	R733	G8
C726	C6	R734	G8
C727	D6	R735	E6
C728	C4	R736	E6
C729	D4	R737	F4
C730	E7	R738	F4
C731	G8	R745	G6
C732	F8	R746	G5
C733	E8	R747	G4
C734	G8	R748	G4
C735	F6	R751	J8
C736	F6	R752	K8
C737	F6	R753	J8
C738	E4	R754	J8
C739	F4	R765	I6
C745	G6	R766	I5
C746	G6	R767	I4
C747	G6	R768	J4
C748	G4	R771	O8
C749	G4	R772	O8
C750	H7	R773	O8
C751	K8	R774	O8
C752	J8	R775	N5
C753	I8	R776	N5
C754	K8	R777	O4
C755	I6	R778	O4
C756	J6	R779	O3
C765	J6	R787	N4
C766	K6	R788	N4
C767	J6	R789	N3
C768	I4	R790	L10
C769	J4	R791	L4
C770	M7	R792	J9
C771	O8	R793	J9
C772	M8	R794	M5
C773	N8	R795	M5
C774	P8	R796	N5
C775	N6	R797	P5
C776	N6	R798	H10
C777	N5	R799	H10
C778	O3		
C779	O3		
C785	O6		
C786	O6		
C788	N3		
C789	N3		
C790	F2		
C791	F2		
C792	F2		
C793	F2		
C794	F2		
C795	F2		
C796	G2		
C797	G2		
C798	J2		
C799	J2		
C79A	J2		
C79B	J2		
C811	C5		
C812	C5		
C813	B4		
C821	C5		
C823	C4		
C831	E5		
C832	F5		
C833	F4		
C841	G5		
C842	G5		
C843	G4		
C851	I5		
C862	J5		
C863	I4		
C871	N3		
IC710	B7		
IC730	F7		
IC750	J7		
IC770	N7		
JK700	G2		
L710	D9		
L711	B5		
L721	C5		
L730	G9		
L731	F5		
L741	G5		
L750	K9		
L761	I5		
L770	O9		
L771	O5		
L781	N5		
R711	C8		
R712	D8		
R713	C8		
R714	C8		



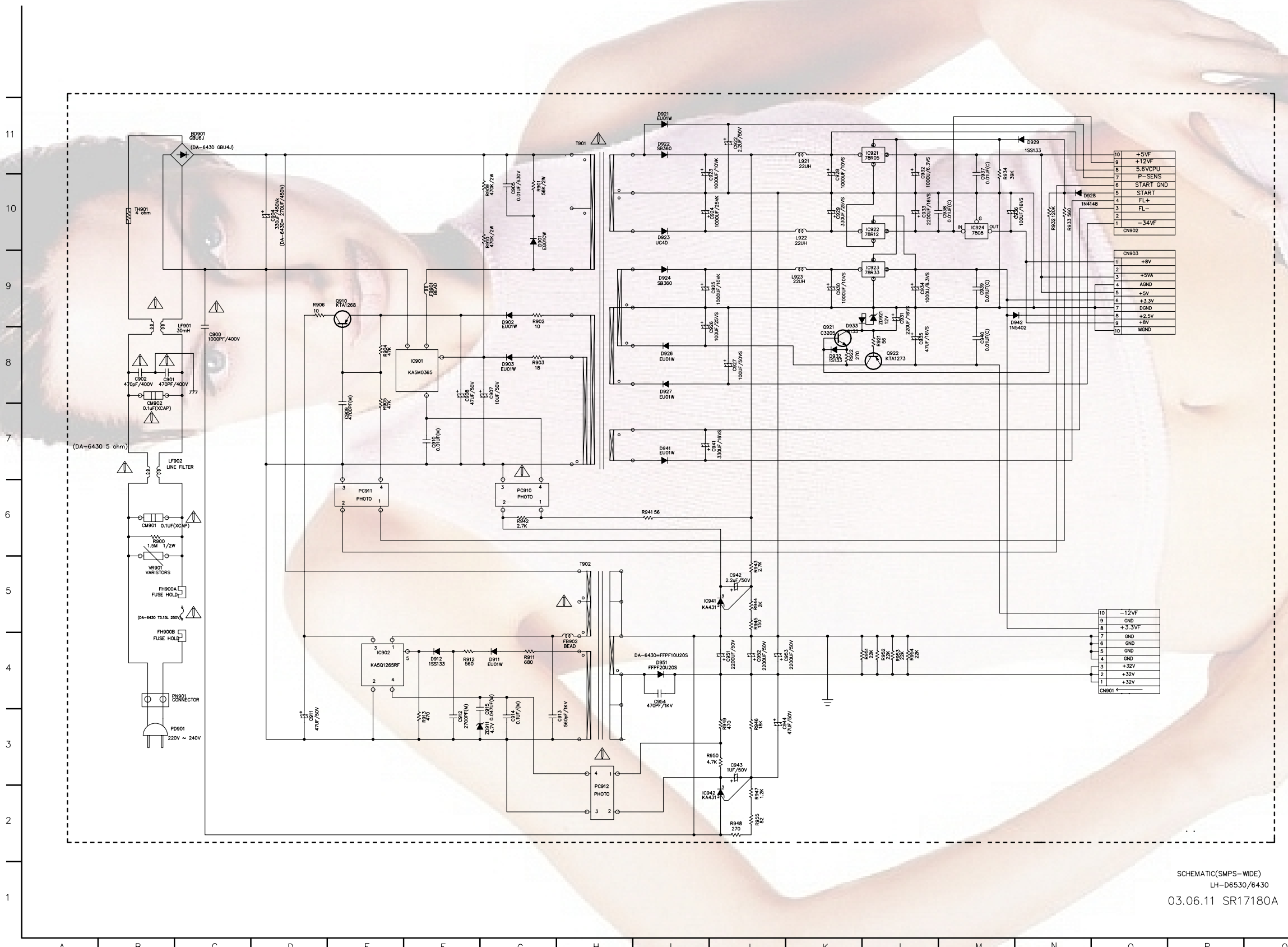
Loc.No	UH-D6530	UH-D6430	Loc.No	UH-D6530	UH-D6430	Loc.No	UH-D6530	UH-D6430	Loc.No	UH-D6530	UH-D6430
IC710	STA501	STA505	C774	104(2012)	X	R771	10	X	R792	X	Q1600
IC730	STA501	X	C775	10/50(KME)	X	R772	Q16012	X	R793	X	Q1600
C710	104(2012)	X	C776	10/50(KME)	X	R773	10K	X	R794	X	1/NPE
C711	104(2012)	X	C777	10/50(KME)	X	R774	10K	X	R795	1/NPE	
C712	104(2012)	X	C778	10/50(KME)	X	R775	10/50(KME)	X	R796	X	1/NPE
C713	104(2012)	X	L770	BEAD	X	R797	1/NPE	X			

SCHMATIC DIAGRAM (AMP)
LH-D6530/6430
03.06.11 3854R17179A

• SMPS SCHEMATIC DIAGRAM

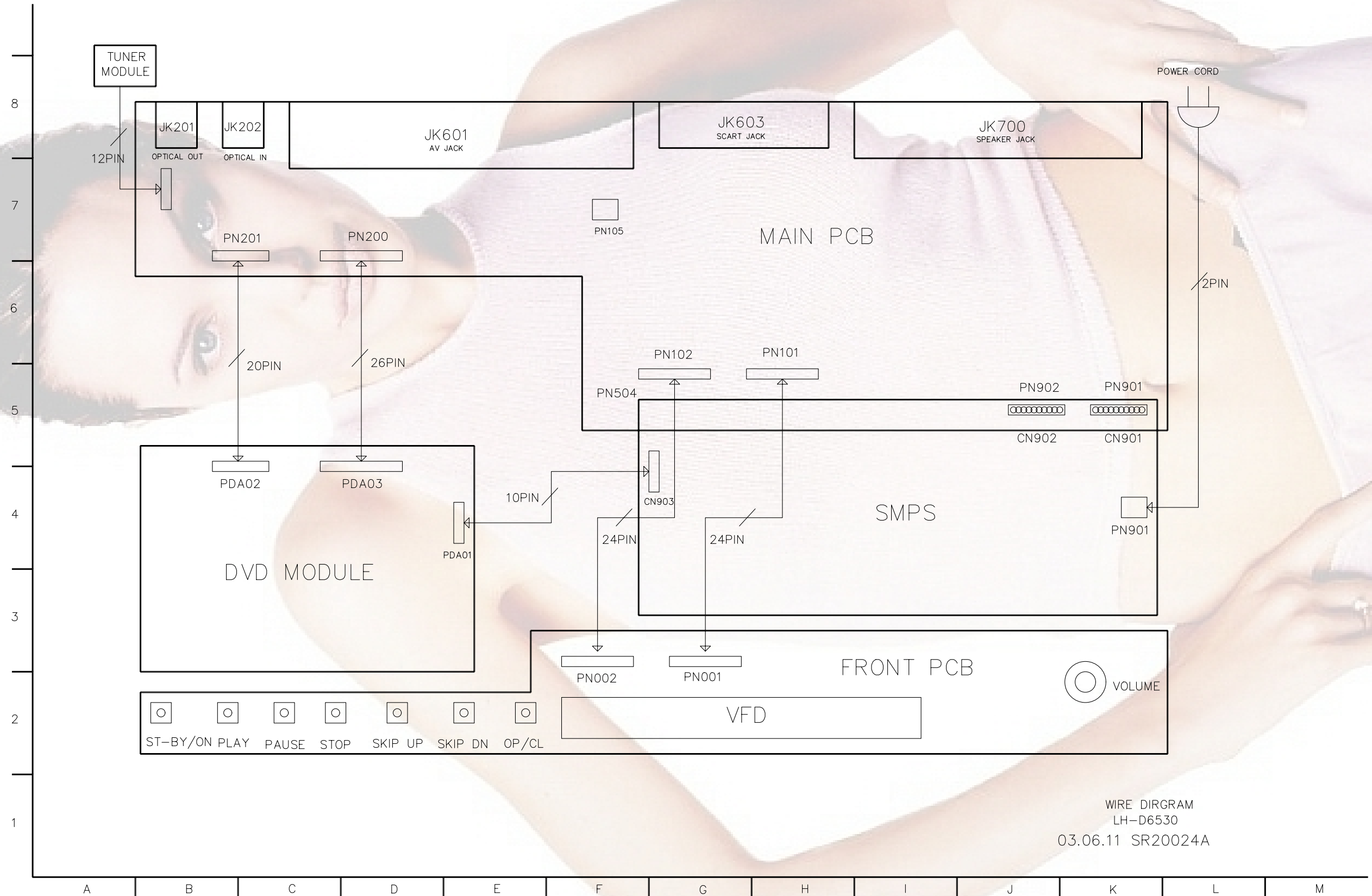
LOCATION GUIDE

BD901	C11	R945	J5
C900	C8	R946	J3
C901	B8	R947	J2
C902	B8	R948	J2
C904	D10	R949	J3
C905	G10	R950	I3
C907	G8	R951	L4
C908	F8	R952	L4
C909	E7	R953	L4
C910	F7	R954	L4
C911	D3	R955	J2
C912	F3	T901	H11
C913	H3	T902	H5
C914	G3	TH901	B10
C915	G3	VR901	B5
C922	J11	ZD911	C3
C923	J10	ZD921	L9
C924	J10		
C925	J9		
C926	J8		
C927	J8		
C928	K10		
C929	K10		
C930	K9		
C931	L9		
C932	L10		
C933	L10		
C934	L9		
C935	L8		
C936	N10		
C937	M10		
C938	M10		
C939	M9		
C940	M8		
C941	J7		
C942	J5		
C943	J3		
C944	K3		
C951	J4		
C952	J4		
C953	K4		
C954	I4		
CM901	B6		
CM902	B7		
CN901	O4		
CN902	O10		
CN903	O9		
D901	G10		
D902	G9		
D903	G8		
D911	G4		
D912	F4		
D921	I11		
D922	I11		
D923	I10		
D924	I9		
D926	I8		
D927	I8		
D928	N10		
D929	N11		
D932	K8		
D933	K8		
D941	I7		
D942	M9		
D951	I4		
FB901	F9		
FB902	H4		
FH900A	B5		
FH900B	B4		
IC901	F8		
IC902	E4		
IC921	L11		
IC922	L10		
IC923	L9		
IC924	M10		
IC941	I5		
IC942	I2		
L921	K11		
L922	K10		
L923	K9		
LF901	C8		
LF902	B7		
PC910	G6		
PC911	E6		
PC912	H2		
PN901	B4		
Q910	E9		
Q921	K8		
Q922	L8		
R900	B6		
R901	G10		
R902	G9		
R903	G8		
R904	E8		
R905	E7		
R906	D9		
R909	G10		
R910	G10		
R911	G4		
R912	F4		
R913	F3		
R921	L8		
R922	K8		
R932	N10		
R933	N10		
R934	M10		
R941	I6		
R942	J6		
R943	J5		
R944	J5		



SCHEMATIC(SMPS-WIDE)
LH-D6530/6430
03.06.11 SR17180A

WIRING DIAGRAM



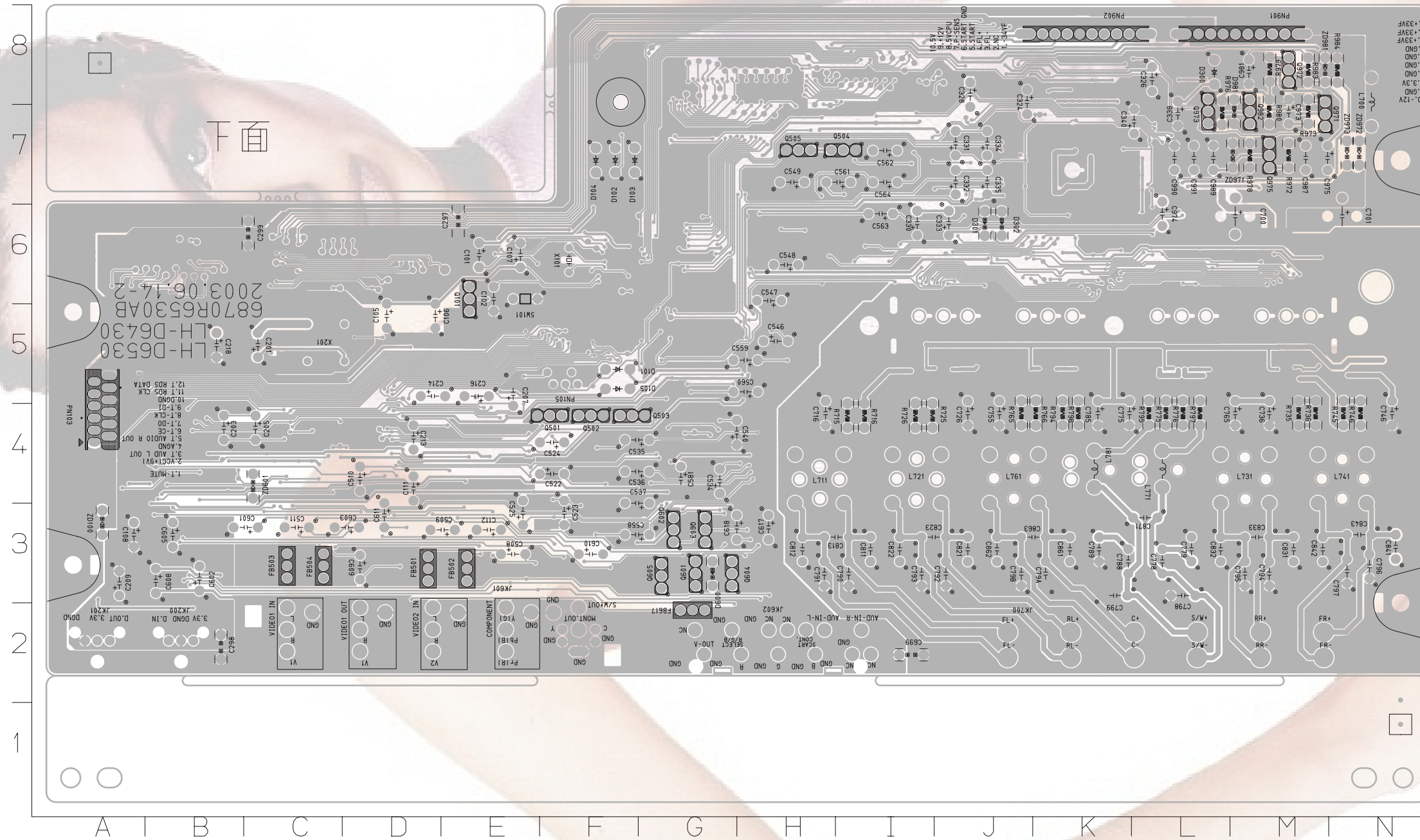
WIRE DIRGRAM
LH-D6530
03.06.11 SR20024A

VOLTAGE SHEET (IC&TR)

1.LH-D6530(MAIN)										4).IC203(74VHC244MTCX, BUFFER IC)									
1).IC101(LC876748C-52K, MICOM)										PIN No. Volt(V) PIN No. Volt(V)									
PIN No.	Volt(V)	PIN No.	Volt(V)	PIN No.	Volt(V)	PIN No.	Volt(V)	PIN No.	Volt(V)	PIN No.	Volt(V)	PIN No.	Volt(V)						
1	2.15V	21	4.88V	41	-31.V	61		81		1	0	11	ADATA1						
2	4.8V	22	3.94V	42	-28.V	62		82		2	0	12	ADATA2						
3	1.36V	23	3.26V	43	-29.V	63		83		3	LRCK	13	ADATA0						
4		24	3.26V	44	-25.V	64	2.2V	84		4		14	ADATA3						
5		25	0	45	-32.V	65		85	3.3V	5	BCK	15	BCK						
6		26	2.75V	46	4.85V	66		86	1.8V	6	ADATA3	16							
7		27	4.85V	47	-31.V	67		87	3.17V	7	ADATA0	17	LRCK						
8		28	4.85V	48	-31.V	68		88	3.3V	8	ADATA2	18	0						
9		29		49	-26.V	69		89	0	9	ADATA1	19	0						
10		30	-31.V	50	-25.V	70	3.26V	90	4.88V	10	0	20	3.2V						
11		31	-31.V	51	-32.V	71	3.15V	91	1.5V	5).IC301(PS9818, DAP IC)									
12		32	-31.V	52	-26.V	72	5.V	92		PIN No.	Volt(V)	PIN No.	Volt(V)	PIN No.	Volt(V)	PIN No.	Volt(V)	PIN No.	Volt(V)
13		33	-31.V	53	-26.V	73	4.95V	93		1	0	21	0	41	PWM_OUT	61	PWM_OUT	81	0
14	0	34	-31.V	54	-26.V	74	4.96V	94		2	0	22	3.3V	42	2.5V	62	PWM_OUT	82	3.3V
15	2.68V(9.8304MHz)	35	-31.V	55	-26.V	75	95	0		3	2.35V	23	ADATA0	43	0	63	0	83	3.3V
16	2.94V(9.8304MHz)	36	-31.V	56	-32.V	76	96	0		4	5.V	24	ADATA1	44	0	64	0	84	0
17	4.89V	37	-31.V	57	-32.V	77		97	0	5	2.35V	25	ADATA2	45	PWM_OUT	65	3.3V	85	0
18	4.86V	38	-31.V	58	-32.V	78		98	2.7V	6	2.32V	26	ADATA3	46	PWM_OUT	66	2.5V	86	2.27(12.288MHz)
19		39	-31.V	59	-25.V	79		99	2.6V	7	0.89V	27		47	3.3V	67	PWM_OUT	87	3.3V
20	4.88V	40	-31.V	60	0	80		100	2.6V	8	0	28	0	48	PWM_OUT	68	PWM_OUT	88	
2).IC201(AK5365VQ, ADC & FUCTION IC)										9	0	29	3.3V	49	PWM_OUT	69	0	89	
PIN No.	Volt(V)	PIN No.	Volt(V)	PIN No.	Volt(V)	PIN No.	Volt(V)			10	3.3V	30		50	0	70	PWM_OUT	90	
1		12	2.5V	23	LRCK	34	0			11	0	31		51	PWM_OUT	71	PWM_OUT	91	2.5V
2	0	13	2.5V	24	MCLK	35	0			12	0	32		52	PWM_OUT	72	3.3V	92	0
3	ADATA4_L_IN	14	2.5V	25	3.3V	36	ADATA1_R_IN			13	2.5V	33		53	0	73	0	93	
4	0	15	2.5V	26	3.3V	37	0			14	0	34	2.5V	54	PWM_OUT	74	PWM_OUT	94	3.3V
5	ADATA3_L_IN	16	5.V	27	0	38	ADATA2_R_IN			15	0	35	0	55	PWM_OUT	75	PWM_OUT	95	0
6	0	17	0	28	0	39	0			16	0	36	PWM_OUT	56	3.3V	76	3.2V	96	4.89V
7	ADATA2_L_IN	18	2.5V	29	0	40	ADATA3_R_IN			17	0	37	PWM_OUT	57	0	77	0	97	
8	0	19	0	30	0	41	0			18	0	38	0	58	PWM_OUT	78	1.5V	98	
9	ADATA1_L_IN	20	3.3V	31	3.3V	42	ADATA4_R_IN			19	BCK	39	3	59	PWM_OUT	79	1.8V	99	
10	2.5V	21	ADATA_OUT	32	3.3V	43	0			20	LRCK	40	PWM_OUT	60	0	80	2.5V	100	
11	2.5V	22	BCK	33	3.9V	44				6).IC501(NJM4580M, OP AMP IC)									
3).IC202(AK4117VF-E2, DIR IC)										PIN No.	Volt(V)	PIN No.	Volt(V)						
PIN No.	Volt(V)	PIN No.	Volt(V)							1	Audio1_L_OUT	5	Audio1_R+_IN						
1	0	13	ADATA_IN							2	Audio1_L-_IN	6	Audio1_R-_IN						
2	3.3V	14	MCLK							3	Audio1_L+_IN	7	Audio1_R_OUT						
3		15								4	-11.8V	8							
4		16								7).IC502(NJM4580M, OP AMP IC)									
5	SPDIF_IN	17								PIN No.	Volt(V)	PIN No.	Volt(V)						
6	3.3V	18								1	S/W_OUT	5	S/W_OUT						
7	0	19	3.3V							2	S/W-_IN	6	S/W_OUT						
8	2.2V(12.288MHz)	20	3.3V							3	S/W+_IN	7	S/W_OUT						
9		21								4	-11.8V	8	11.9V						
10	LRCK	22								8).IC503(NJM4580M, OP AMP IC)									
11	BCK	23	3.3V							PIN No.	Volt(V)	PIN No.	Volt(V)						
12	ADATA_OUT	24	0							1	HPhone_L_OUT	5	HPhone_R+_IN						
										2	HPhone_L-_IN	6	HPhone_R-_IN						

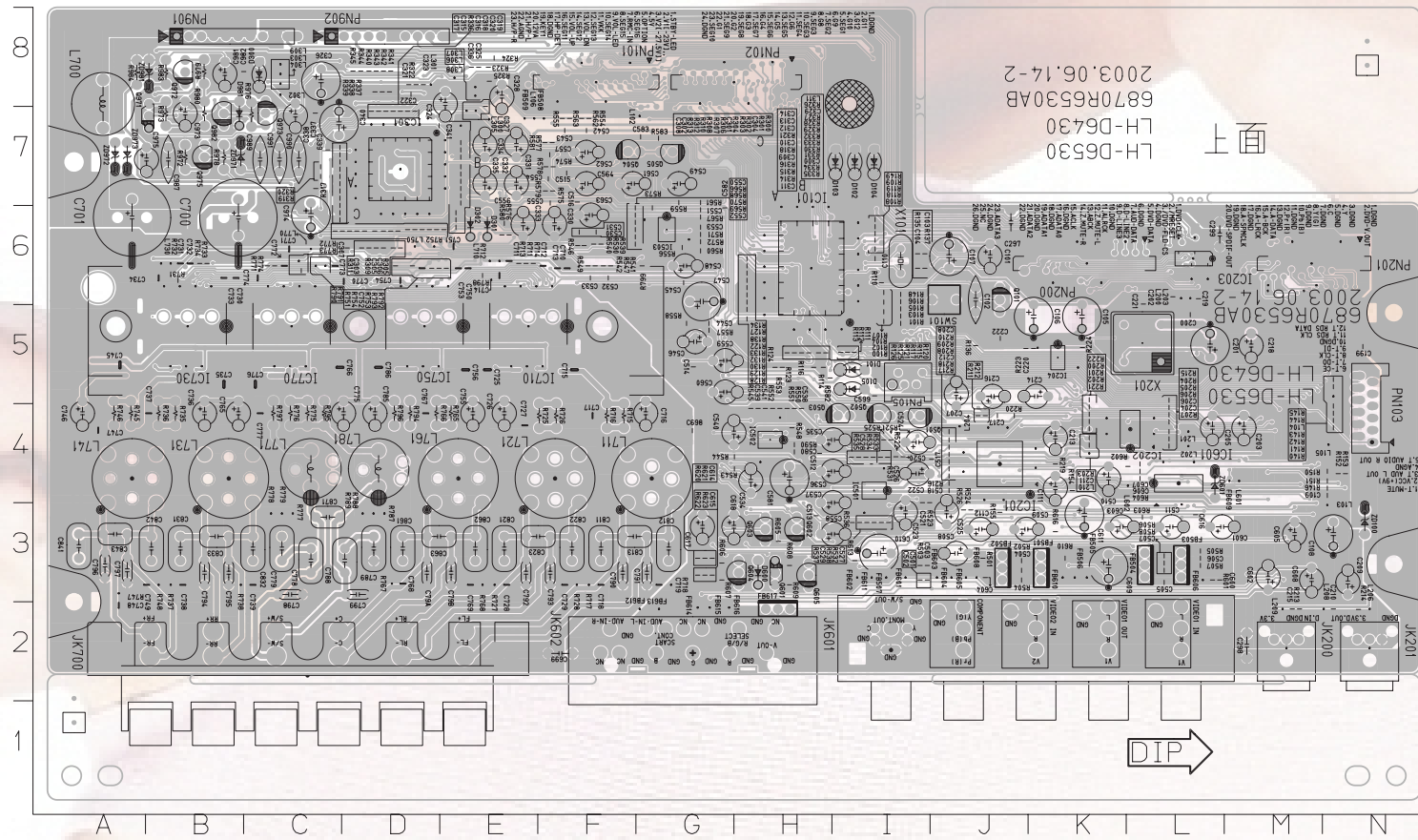
PRINTED CIRCUIT DIAGRAMS

MAIN P.C. BOARD (SOLDER SIDE)



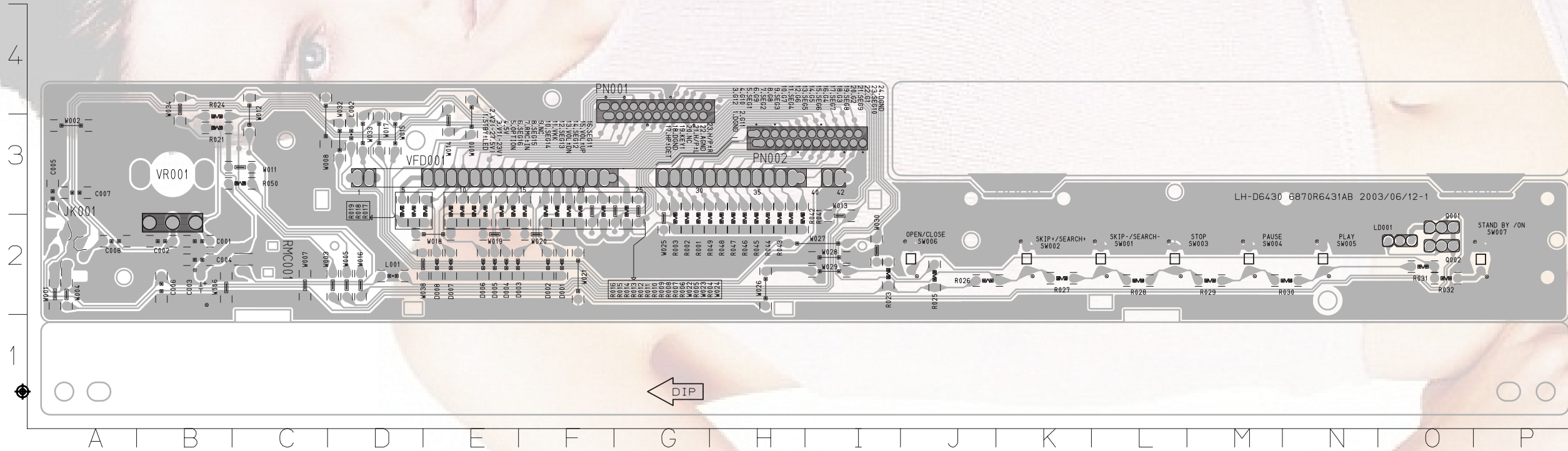
- PIN0027 I7
- PIN0133 M6
- PIN0142 K6
- PIN0143 K6
- PIN0158 F5
- PIN0162 B4
- PIN0163 D5
- PIN0164 J6
- PIN0165 J6
- PIN0166 K6
- PIN0167 K6
- PIN0168 K6
- PIN0171 J7
- PIN0176 J6

• MAIN P.C. BOARD (COMPONENT SIDE)



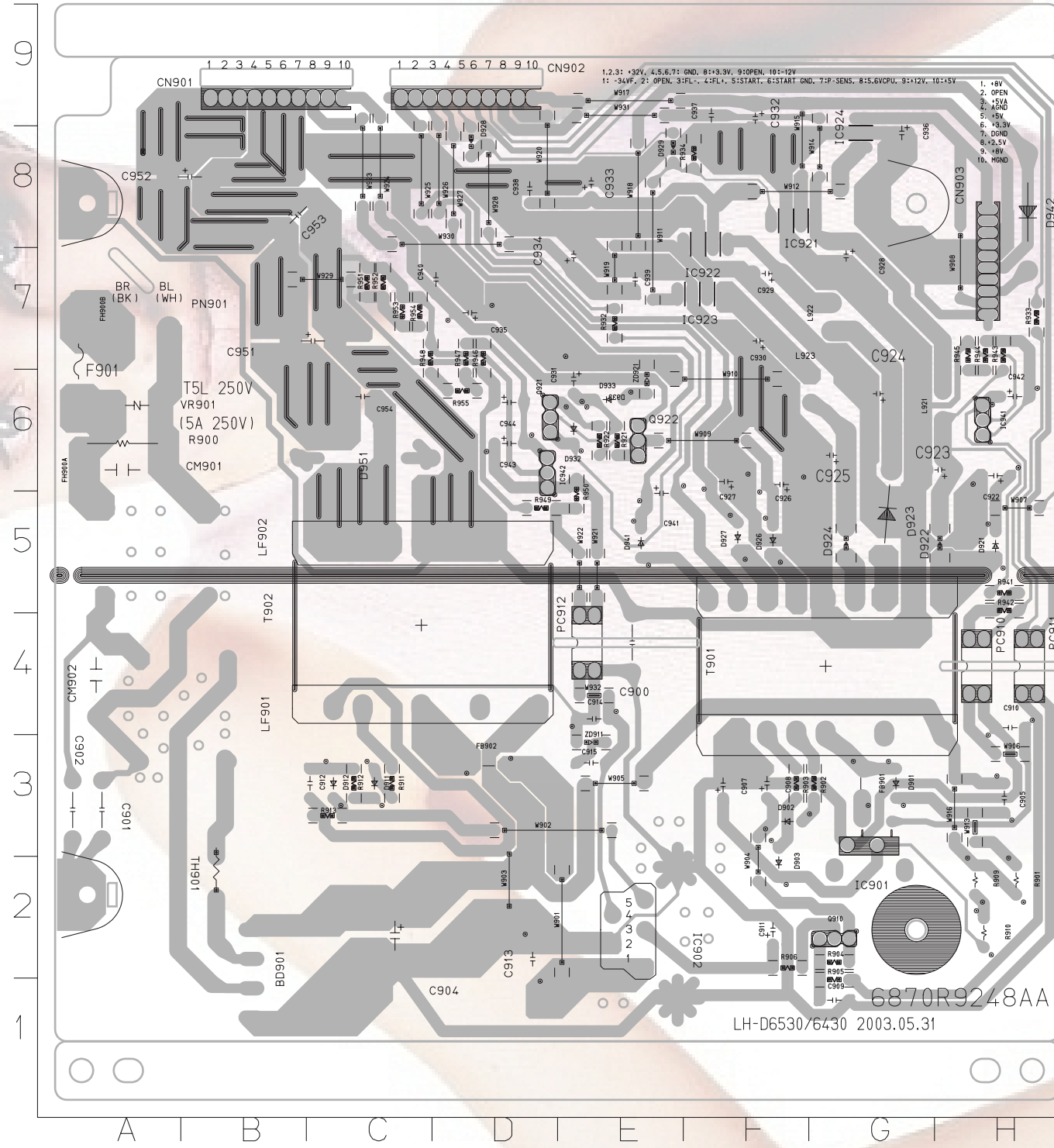
C101	J6	C312	C7	C523	I3	C604	J3	C754	D6	C974	C6	IC503	G6	PN0003	K5	PN901	B8	R134	H6	R306	D6	R524	J3	R580	E6	R767	D3
C102	J6	C313	C7	C524	J3	C605	M3	C755	E4	C975	B7	IC601	L4	PN0004	D7	PN902	C8	R135	I6	R307	D6	R525	I4	R581	F7	R768	E3
C103	I6	C314	D7	C525	L4	C606	L4	C756	E5	C981	B8	IC710	E5	PN0005	D8	0101	J4	R136	J5	R308	D6	R526	J3	R582	H5	R769	C6
C104	I6	C315	D7	C526	I4	C607	L4	C757	E6	C982	C8	IC730	B5	PN0006	D9	0501	I4	R137	I6	R309	D6	R527	I4	R583	G7	R770	C6
C105	K5	C316	D7	C527	I3	C608	M3	C758	C5	C987	B7	IC750	D5	PN0007	D8	0502	I4	R138	H6	R310	D6	R528	I4	R584	H4	R771	C6
C106	K5	C317	D7	C528	I4	C609	K3	C759	D4	C989	C7	IC770	C5	PN0013	F6	0503	I4	R140	N4	R311	D6	R529	I3	R585	L3	R772	C6
C107	J6	C318	D7	C529	I3	C610	I3	C760	D3	C990	C7	JK200	M2	PN0014	E6	0504	F7	R141	N4	R312	D6	R530	I4	R586	L4	R773	C6
C108	N3	C319	D7	C530	F6	C611	K3	C761	E3	C991	E1	JK201	N2	PN0015	F6	0505	G7	R142	N4	R313	D6	R531	I4	R587	L3	R774	C6
C109	N4	C320	D7	C531	F6	C614	G3	C762	D6	D101	I5	JK601	I2	PN0016	E6	0601	H3	R143	N4	R314	C6	R532	I4	R588	L4	R775	C4
C110	I6	C321	D8	C532	F6	C615	G3	C770	C6	D102	I7	JK602	G2	PN0017	E6	0602	H3	R144	N5	R315	C6	R533	I3	R589	H3	R776	C3
C111	K4	C322	D8	C533	F6	C616	L3	C772	C6	D103	I7	JK700	C2	PN0018	B6	0603	H3	R145	N5	R316	C7	R534	I3	R590	G3	R777	C3
C112	J3	C323	D8	C534	H4	C617	G3	C773	C6	D104	I7	L102	G7	PN0021	E6	0604	H3	R146	N4	R317	C7	R535	I3	R591	G3	R778	D3
C199	N5	C324	E8	C535	I4	C618	G3	C774	C6	D105	I5	L103	N3	PN0022	E6	0605	H3	R148	I6	R318	C7	R536	F6	R592	H3	R779	C3
C200	L5	C325	E8	C536	I4	C698	G4	C775	D4	D300	C8	L104	N5	PN0023	E6	0606	H3	R149	I6	R319	C7	R537	F6	R593	H3	R780	D3
C201	L5	C326	C8	C537	I3	C699	F2	C776	C5	D301	E6	L105	N4	PN0025	D6	0607	B8	R150	N4	R320	C7	R538	F6	R594	K3	R781	C6
C202	L6	C327	E7	C538	H4	C700	B6	C777	C4	D302	E6	L106	E7	PN0026	I3	0608	C7	R151	N4	R321	C7	R539	F6	R595	L3	R782	C6
C203	M4	C328	E8	C539	H4	C701	A6	C778	C3	D600	H3	L200	L6	PN0028	G2	0609	B7	R152	N4	R322	D8	R540	H4	R596	K3	R783	E6
C204	L4	C329	E7	C540	G4	C710	B6	C779	C3	D981	B7	L201	B7	PN0029	C3	0610	B7	R153	N4	R323	E8	R541	H4	R597	G3	R784	E6
C205	L4	C330	F6	C541	H4	C711	E6	C785	D4	FB501	K3	L202	L4	PN0030	I5	R100	I5	R154	K4	R324	E8	R542	H4	R598	G3	R785	D4
C206	L4	C331	E7	C542	F7	C712	F6	C786	D5	FB502	J3	L203	L6	PN0031	I5	R101	I5	R155	J3	R325	E8	R543	H4	R599	G3	R786	D4
C207	J5	C332	E7	C543	F7	C713	F6	C788	D3	FB503	L3	L204	J4	PN0037	I6	R102	I5	R200	K4	R326	E7	R544	F6	R600	G3	R787	C6
C208	J4	C333	E6	C544	G5	C714	E6	C789	D3	FB504	L3	L206	N2	PN0040	I6	R103	I5	R201	K4	R327	E7	R545	H4	R601	E6	R788	C6
C209	N3	C334	E7	C545	G6	C715	F5	C790	F3	FB505	K3	L208	N2	PN0044	I6	R104	I5	R202	K4	R328	E7	R546	F6	R602	E6	R789	E6
C210	N2	C335	E7	C546	G5	C716	G4	C791	E3	FB506	K3	L209	M2	PN0079	D8	R105	I5	R203	K4	R329	E7	R547	H4	R603	E6	R790	G6
C211	K4	C336	E8	C547	G6	C717	F4	C792	E3	FB507	I3	L210	K4	PN0081	D8	R106	I5	R204	L4	R330	E7	R548	H4	R604	E6	R791	G6
C212	J4	C337	C7	C548	G6	C718	F3	C793	F3	FB508	F7	L300	E7	PN0086	K5	R107	I6	R205	L4	R331	E7	R549	H4	R605	E6	R792	B7
C213	K4	C338	C7	C549	G7	C719	G3	C794	B3	FB509	E7	L301	D8	PN0112	D6	R108	I6	R206	L4	R332	E7	R550	H4	R606	E6	R793	B7
C214	K5	C339	C7	C550	F6	C725	E5	C795	B3	FB601	I3	L302	C8	PN0113	D6	R109	I6	R207	L4	R333	E7	R551	H4	R607	E6	R794	B7
C215	M2	C340	C7	C551	G6	C726	E4	C796	A3	FB602	I3	L303	C8	PN0114	E6	R110	I6	R208	J4	R334	E6	R552	F7	R608	E6	R795	B7
C216	J5	C341	D7	C552	G6	C727	E4	C797	A3	FB603	J3	L305	C8	PN0115	E7	R111	I5	R209	J4	R335	E6	R553	F7	R609	E6	R796	B7
C217	J5	C342	D7	C553	G6	C728	E3	C798	C3	FB604	J3	L306	E8	PN0127	F6	R112	I5	R210	J4	R336	E7	R554	F7	R610	E6	R797	B7
C218	M5	C502	I3	C554	F7	C729	F3	C799	D3	FB605	J3	L306	E8	PN0128	E6	R113	I5	R211	J4	R337	D8	R555	G7	R611	E6	R798	B7
C219	L6	C503	I3	C555	F7	C730	B6	C79A	D3	FB606	L3	L307	E8	PN0130	F6	R114	H5	R212	J4	R338	D8	R556	G7	R612	E6	R799	B7
C220	K5	C504	J3	C556	E6	C731	B6	C79B	E3	FB608	J3	L308	E8	PN0134	B6	R115	H5	R213	M2	R339	D8	R557	G7	R613	E6	R800	B7
C221	L5	C505	L3	C557	F7	C732	B6	C811	F3	FB609	M4	L309	C8	PN0137	B6	R116	H5	R214	N2	R340	D8	R558	G7	R614	E6	R801	B7
C222	J5	C506	L3	C558	I3	C733	B6	C812	G3	FB610	K3	L311	E7	PN0139	D6	R117	H5	R215	L5	R341	D8	R559	G7	R615	E6	R802	B7
C297	J6	C507	L3	C559	G5	C734	B6	C813	F3	FB611	I3	L601	M4	PN0146	E6	R118	I6	R216	J4	R342	D8	R560	G7	R616	E6	R803	B7
C298	M2	C508	J3	C560	G5	C735	B5	C821	E3	FB612	G2	L602	L4	PN0147	D6	R119	I6	R217	J4	R343	D8	R561	G7	R617	E6	R804	B7
C299	L6	C509	J3	C561	F7	C736	B4	C822	F3	FB613	G2	L700	A8	PN0159	I6	R120	H5	R218	J4	R344	D8	R562	G7	R618	E6	R805	B7
C300	E6	C510	K4	C562	F7	C737	B4	C823	F3	FB614	G2	L710	E6	PN0160	H5	R121	H5	R219	K4	R345	D8	R563	G7	R619	E6	R806	B7
C301	D6	C511	L3	C563	F6	C738	B3	C831	B3	FB615	G2	L711	G4	PN0169	D6	R122	H6	R220	J4	R501	J3	R564	F7	R620	E6	R807	B7
C302	D6	C512	H4	C564	F7	C739	C3	C832	C3	FB616	G2	L721	F4	PN0170	C7	R123	H6	R221	K4	R502	J3	R565	F7	R621	E6	R808	B7
C303	D6	C513	H3	C580	H4	C745	A5	C833	B3	FB617	H2	L730	B6	PN0173	C7	R124	H5	R222	K5	R503	I3	R566	F7	R622	E6	R809	B7
C304	D6	C514	G5	C581	H4	C746	A4	C841	A3	IC101	J4	L731	B4	PN0174	C7	R125	H5	R223	J5	R504	J3	R567	F7	R623	E6	R810	B7
C305	D6	C515	F7	C582	G6	C747	A4	C842	B3	IC201	A7	L741	A4	PN0175	C7	R126	H5	R224	K5	R505	I3	R568	F7	R624	E6	R811	B7
C306	D6	C516	F7	C583	G7	C748	A2	C843	A3	IC202	L4	L750	D6	PN101	F8	R127	H6	R300	E6	R506	L3	R569	F7	R625	E6	R812	B7
C307	D6	C517	J4	C599	I5	C749	B3	C861	D3	IC203	L6	L761	E4	PN102	G8	R128	H5	R301	D6	R507	L3	R570	F6	R626	E6	R813	B7
C308	C6	C518	J4	C600	L3	C750	E6	C862	E3	IC204	K5	L770	C6	PN103	N4	R129	H5	R302	D6	R508	L3	R571	F6	R627	E6	R814	B7
C309	C7	C520	I4	C601	L3	C751	E6	C863	D3	IC301	D7	L771	C4	PN105	I5	R130	H6	R303	D6	R509	I4	R572	F6	R628	E6	R815	B7
C310	C7	C521	I3	C602	M3	C752	D6	C871	C3	IC501	I4	L781	D4	PN200	K6	R132	H6	R304	D6	R510	I4	R573	F6	R629	E6	R816	B7
C311	C6	C522	I4	C603	K3	C753	E6	C973	B7	IC502	H4	PN10001	K5	PN201	M6	R133	H6	R305	D6	R511	I4	R574	F6	R630	E6	R817	B7

• FRONT P.C. BOARD



C001	B2	R014	E3
C002	B2	R015	E3
C003	B2	R016	E3
C004	B2	R017	E3
C005	A3	R018	D3
C006	B2	R019	D3
C007	A3	R021	B3
C008	A2	R023	I2
D001	F2	R024	B3
D002	F2	R025	J2
D003	E2	R026	J2
D004	E2	R027	K2
D005	E2	R028	L2
D006	E2	R029	M2
D007	E2	R030	N2
D008	E2	R031	O2
JK001	A2	R032	O2
L001	D2	R041	H2
L002	D3	R042	H2
LD001	O2	R043	H2
PN001	G4	R044	H2
PN002	I3	R045	H2
Q001	O2	R046	H2
Q002	O2	R047	H2
R001	G2	R048	H2
R002	G2	R049	H2
R003	G2	R050	C3
R004	G3	RMC001	C2
R005	F3	SW001	K2
R006	F3	SW002	L2
R007	F3	SW003	L2
R008	F3	SW004	M2
R009	F3	SW005	N2
R010	F3	SW006	J2
R011	E3	SW007	P2
R012	E3	VFD001	D3
R013	E3	VR001	B3

• SMPS P.C. BOARD



BD901	B2	CM902	A4	Q910	G2
C900	E4	CN901	B9	Q921	D6
C901	A3	CN902	D9	Q922	E6
C902	A3	CN903	H8	R900	A6
C904	C2	D901	G3	R901	H2
C905	H3	D902	F3	R902	G3
C907	F3	D903	F2	R903	F3
C908	F3	D911	C3	R904	G2
C909	G1	D912	C3	R905	G1
C910	H4	D921	H5	R906	F2
C911	F2	D922	H5	R909	H2
C912	C3	D923	G5	R910	H2
C913	D2	D924	G5	R911	C3
C914	E4	D926	F5	R912	C3
C915	E3	D927	F5	R913	C3
C922	H6	D928	D8	R921	E6
C923	H6	D929	E8	R922	E6
C924	G6	D932	E6	R932	E7
C925	G6	D933	E6	R933	H7
C926	F6	D941	E5	R934	F8
C927	F6	D942	H8	R941	H5
C928	G7	D951	C6	R942	H5
C929	F7	FB901	G3	R943	H7
C930	F7	FB902	D3	R944	H7
C931	E6	FH900A	A6	R945	H7
C932	F9	FH900B	A7	R946	D7
C933	E8	IC901	G2	R947	D7
C934	E7	IC902	E2	R948	C7
C935	D7	IC921	F8	R949	D5
C936	G8	IC922	F8	R950	E5
C937	F9	IC923	F7	R951	C7
C938	D8	IC924	G8	R952	C7
C939	E7	IC941	H6	R953	C7
C940	D7	IC942	D6	R954	C7
C941	E5	L921	H6	R955	D6
C942	H6	L922	G7	T901	G4
C943	D6	L923	G6	T902	C4
C944	D6	LF901	B4	TH901	B2
C951	C7	LF902	A5	VR901	A6
C952	B8	PC910	H4	ZD911	E3
C953	B8	PC911	H4	ZD921	E6
C954	C6	PC912	E4		
CM901	A6	PN901	A7		