

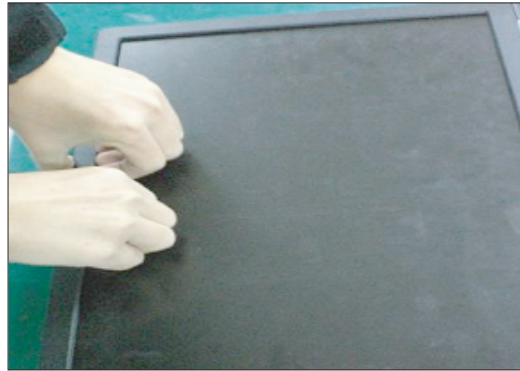
DISASSEMBLY

1



Pull the cabinet upwards,
Then push the button "push" to separate
the hinge body and stand body.

2



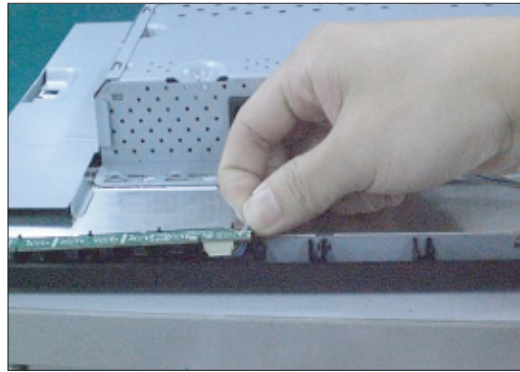
Pull the cabinet upwards,
Then separate all latches on each side.

3



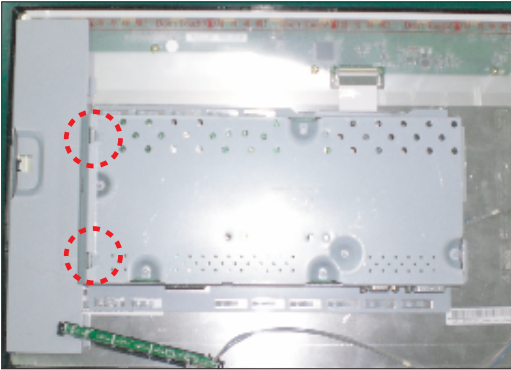
Disassemble the back cover.

4



Remove the control button from cabinet,
Then disassemble the connector.

5



Separate the lamp shield from rear shield.
Please pull off the latch first.

6



Turn around the base lock to open the
lock between base cover and stand body..

7



Then separate stand body and base cover.