
3 Disassembly and Reassembly

This section of the service manual describes the disassembly and reassembly procedures for the RS21A*/RS24A* monitor.

WARNING: This monitor contains electrostatically sensitive devices. Use caution when handling these components.

3-1 Disassembly

Cautions: 1. Disconnect the monitor from the power source before disassembly.
2. Follow these directions carefully; never use metal instruments to pry apart the cabinet.

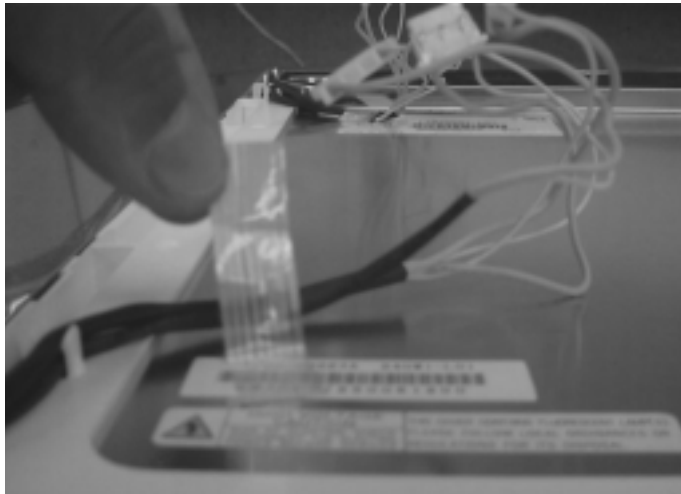
3-1-1 Removing the Stand

1. Disconnect power cord and signal cable.
2. Remove 2 screws and bushing on the each side of stand.

3-1-2 Main Body Disassembly

1. Remove the tuner-box.
2. Remove 3 cap-screw and screws on the Rear Cover.
3. Remove Rear Cover from the Front Cover.
4. Remove 1 screw on the PCB and remove the tuner-guide.
5. Remove 9 screws on the shield and remove the shield.
6. Disconnect Inverter wire, Function PCB wire, Audio wire, Interface wire, and IR sensor wire . Remove 6 screws on the main PCB and 4 screws on the Inverter PCB.
7. Remove the main PCB Assembly and Inverter PCB.
8. Remove 4 screws on the Rear Panel Bracket.
9. Remove the Bracket Assembly from the Front Cover.
10. Remove 4 screws on the panel and then remove the panel.
11. Remove 8 screws on the Bracket Hinge.
12. Remove the Braket Hinge.

3-2 Replacement Order of Lamp Assemblies

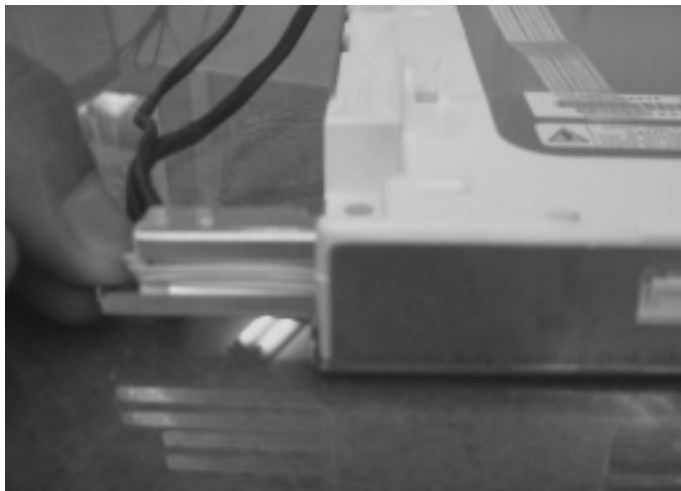


1. Remove the lamp wire holding tape from the metal chassis on the bottom side.

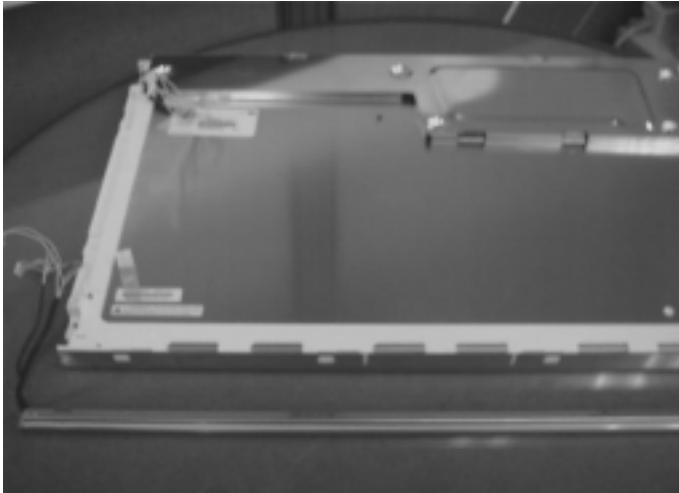
1-1. Taking out the lamp wire from the lamp wire holder.



2. Unscrewing the screw.
Unscrewing force : 0.8 ~ 1Kg - f.cm



3. Pulling out the lamp Assembly with stable Power and direction slowly.
Be careful, do not twist the lamp reflector when pulling the lamp.



4. Dis-Assembled the lamp Ass'y from LCD completely.

* Replacement of lamp unit should be done at the power off state and recommended clean bench condition.

3-3 Reassembly

Reassembly procedures are in the reverse order of Disassembly procedures.

Memo