

Model type:
W642TX(EX)

Commercial code:
25548

General notes

Technical Documentation guidelines

You can find herewith some generic information to simplify consulting of technical documentation:

1. Models of same range share the same exploded views, which report the richest set of spare parts: generally, a model does not necessarily have a related spare part for each particular shown on exploded views.
2. Some spare parts can not be represented directly on the exploded views (instruction booklets, specific kit, etc...). You can find those codes in the spare parts list with the same reference of particular where spares are installed or with references 099, 999. Instruction booklets, once managed, appear with 000 reference.
3. On the higher right site of each exploded view there is a serial number which indicates the beginning of the production of certain range: some models might have more than an exploded view for a given category, each distinguished by a different serial no. and linked to another spare parts list. In this case, serial no. is required to supply the right spare part code. Exploded view to be considered is the one with a more recent serial no. but previous than the one of the model that needs assistance.
4. Exploded views might require further updates even after publishing. Addition of new spares will go on following the already existing numeration references. Revision number of an exploded view is shown into last four digits of serial number into upper right hand corner.
5. The spare parts list associated to an exploded view shows related codes of spares managed for a certain model; for each spare part other informations are available:

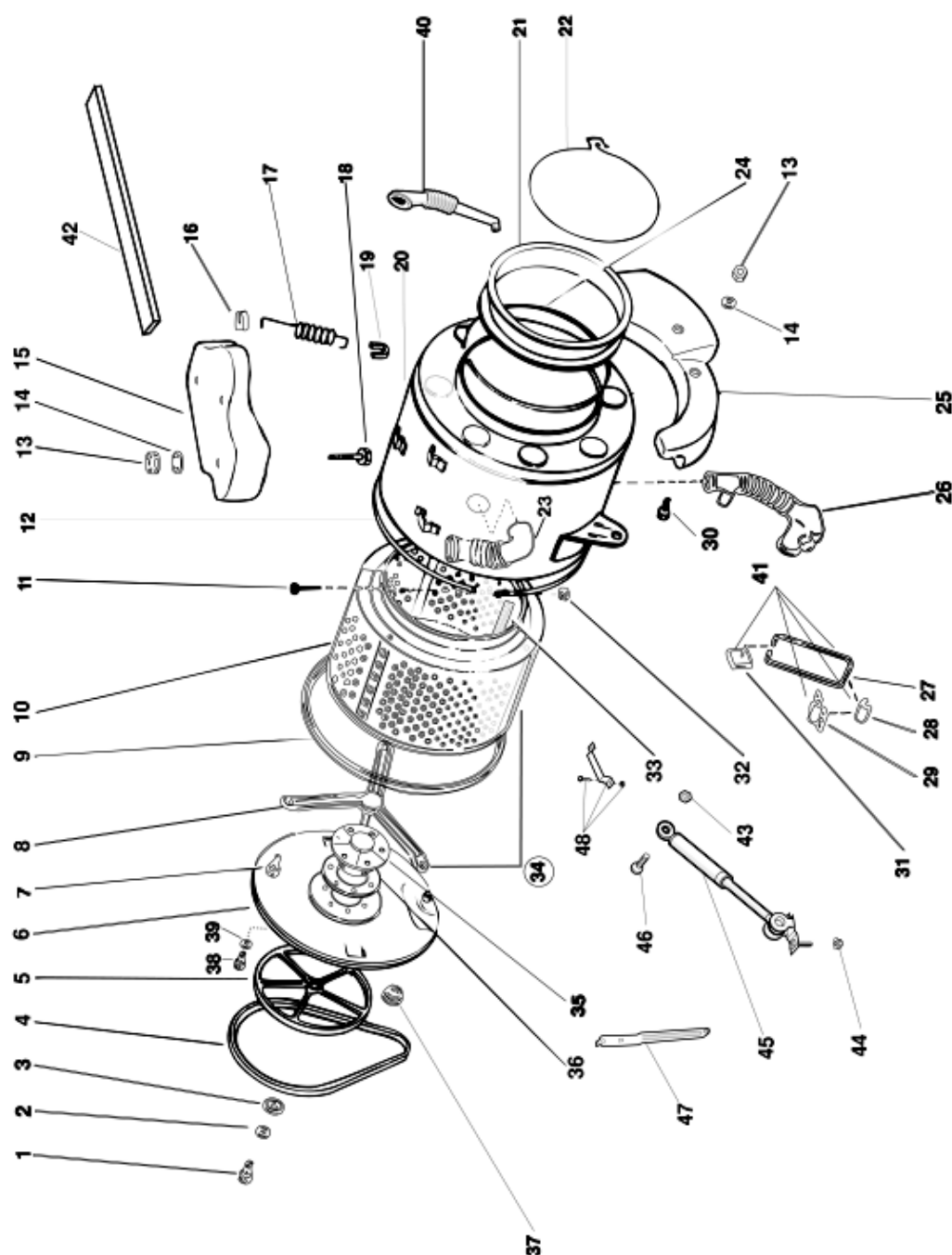
REF: reference no of spare into a table; SUBSTITUTE: list of spare(s) which can replace a code but that keeps same functional characteristics

INDUSTRIAL CODE: list of variables of a model (shown into model label) where such spare is used; NOTICE: code of information(s) to refer to complete technical intervention, track for changes or to find correct spare part code.
6. Some notices, into a same section are generic therefore cannot be directly linked to a spare part. In order to assist a model in the best way as possible, it is helpful to pay attention to all notices and constantly verify documentation updates
7. Technical documentation cover shows model name and its commercial codes

1110210b

Exploded views

MATR. 50619.0004



1110210B

1110210b

Spare parts list

Ref.	Code	C cep.№	По	Substitute	Description	Notice	Industrial
001	C00034335				винт крепежный ведомого	n1040259	
002	C00034337				шайба 10,5 x 21	n1040259	
003	C00034336				шайба d33xd9xsp2	n1040235	
003	C00081553				washer d.33xd.10.5xsp.3		
004	C00056782				ремень l 1123 j4		
005	C00053721				ведомый шкив барабана		
006	C00063237				эмал.крышка ванны		
008	C00038453			1 x C00034335 1 x C00038358 1 x C00089734	крестовина барабана 600-800	n1040259	
009	C00103637				прокладка крышки ванны d=		
010	C00036059				барабан 400-600-800-1000 obg		
011	C00104428			1 x C00014855	винт m8x80 для главного		
012	C00104364				кольцо главное крепежное бака		
013	C00047136			1 x C00144571	гайка romob m8		
014	C00057909				washer		
015	C00046943				противовес верхний "wg834txi"		
016	C00047133				зажимн.кольцо пружины бел.		
017	C00047087				пружина ванны		
018	C00039303				bolt l=55		
020	C00081546				бак, нерж. сталь wlb2000		
021	C00047099				прокладка смотрового окна obg		
022	C00064546				переднее кольцо		
023	C00066183				сиффон загрузки		
024	C00040621				винт m4 x 50		
024	C00058703				кольцо заднее прокладки		
025	C00046942				противовес передний		
026	C00046962				сиффон слива giugiaro		
030	C00057907				bolt		
032	C00058676			1 x C00041843	шайба 8,4x14x1,6		
034	C00038450			1 x C00089735	drum + spider assembly 600-800-		
035	C00046971				бел.втулка 600-800		
036	C00103642				толстая прокладка ступицы l5		
037	C00014917				прокладка термостата		
038	C00046972				винт m8x18		

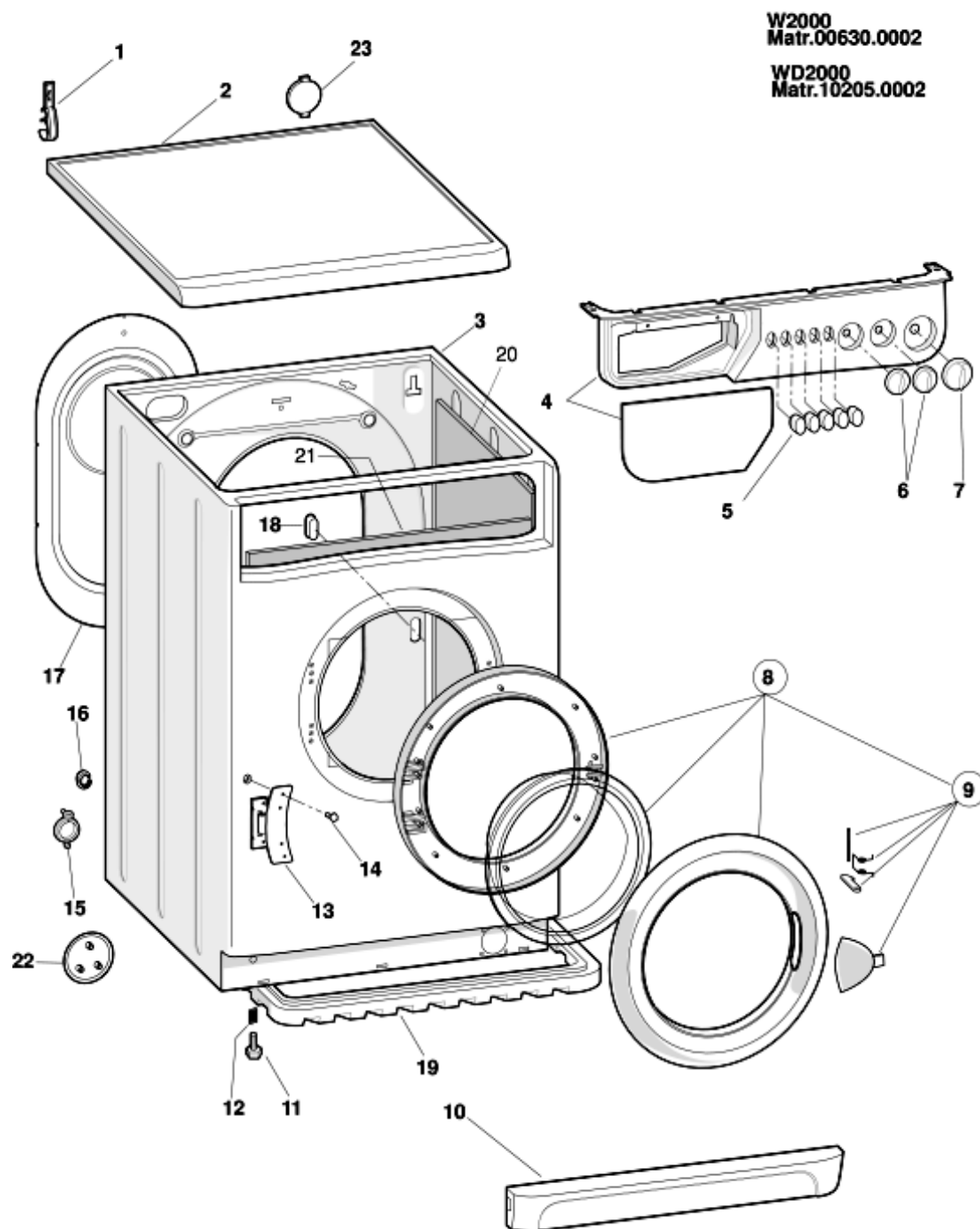
1110210b

Spare parts list

Ref.	Code	C cep.№	По	Substitute	Description	Notice	Industrial
039	C00041843				шайба плоская 8,5x17x1,5		
040	C00051421			1 x C00064117	труба возврата моющего		
042	C00055397				поперечина корпуса		
043	C00030680			1 x C00040130	гайка самозаконтривающаяся m		
044	C00065152				гайка гомоб m6x22x1,5		
045	C00066184				амортизатор 120 n	n1040230	
045	C00086372				амортизатор 120n (11105)		
046	C00030446				винт m10 x 45 zntr		
047	C00081555				earth plate		

1180110

Exploded views



1180110

1180110

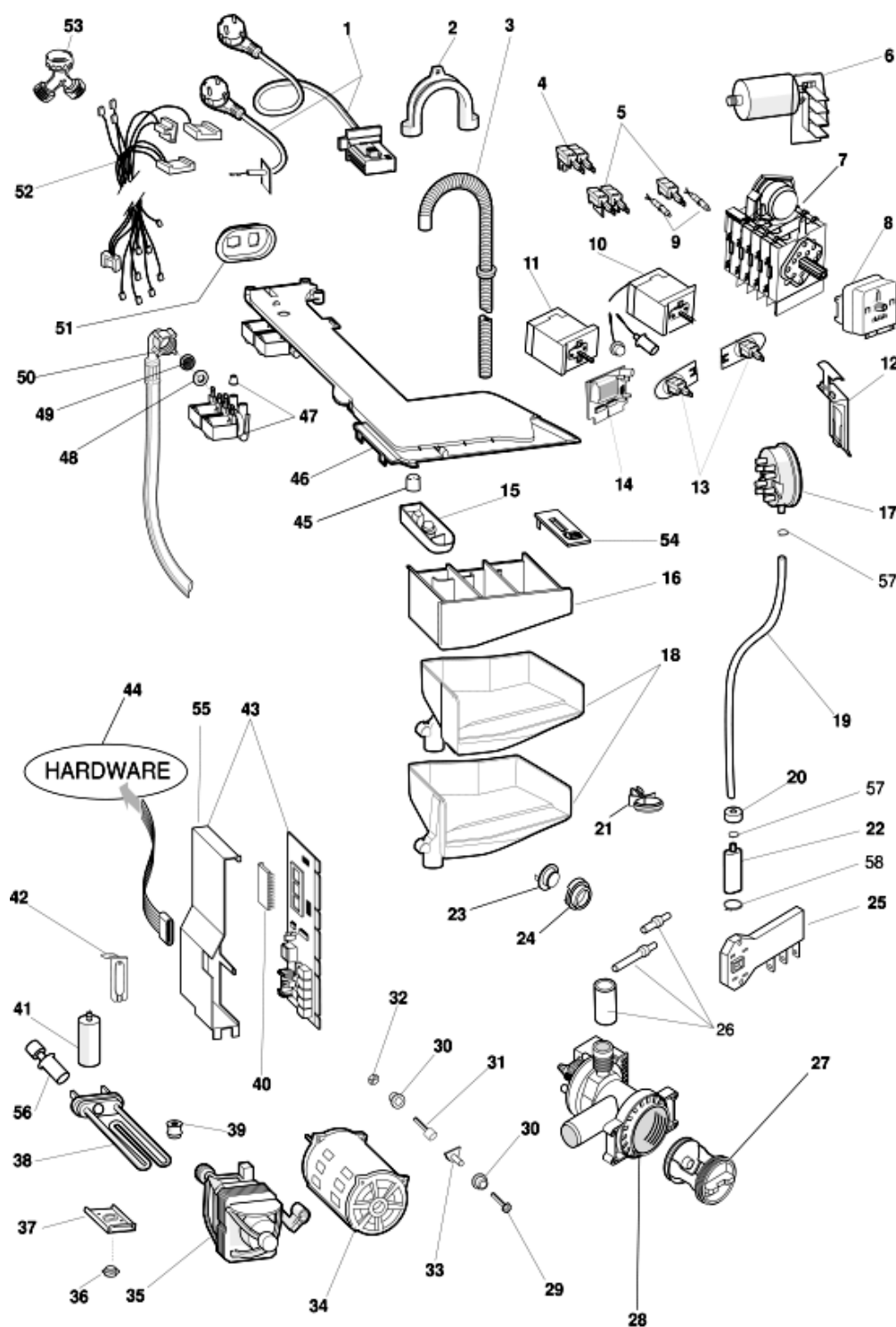
Spare parts list

Ref.	Code	C cep.№	По	Substitute	Description	Notice	Industrial
000	C00081618				user instructions booklet rs-gb-f-gr		
000	C00081619				user instructions booklet bg-ro-ar		
001	C00019685				держатель сливного шланга		
002	C00075420				top bianco		
003	C00075417			1 x C00090583	белая тумба	n1040200 n1040276	
003	C00083796				колпачок электромагн. клапана	n1040200	
004	C00081616				панель управления + ручка		
005	C00075317				белая клавиша		
006	C00075318				рукоятка компонентов b27		
007	C00075319				рукоятка белого таймера		
008	C00075320				дверца люка в сборе	n1040213	
008	C00081890				дверца люка в сборе		
009	C00075323				набор для раскрытия смотр.		
010	C00075418				белый плинтус		
011	C00050320			1 x C00084810 1 x C00110512	регулируемая опора m 8 h = 41		
012	C00059869				пружина опоры d =11 mm h =		
013	C00075325			2 x C00096210 1 x C00255430	петля смотрового 3.5 mm indesit		
014	C00002497				гайка m4x3,2x7		
014	C00019846				винт t 1/2 t m4x12		
014	C00057568			1 x C00065185	bolt kfr		
015	C00044085				заглушка для мебели		
016	C00064755				хомут		
017	C00046924				панель задняя белая 27		
019	C00076402				panel paraspray		
099	C00040932				самоконтрящаяся гайка m6		
099	C00044115				прокладка упаковки l = 34 mm		
099	C00044116				bolt m8 x 55		
099	C00055339				bracket		
099	C00058925				прокладка упаковочная бака		

1180310

Exploded views

Matr. 00630.0003



1180310

1180310

Spare parts list

Ref.	Code	C cep.№	По	Substitute	Description	Notice	Industrial
001	C00064563				кабель питания 3x1 schuko 1,5 m		
002	C00019902				опора спиральн. сливн. шланга		
003	C00027466				спир.сливной шланг с коленом		
005	C00058465				двухполюсный выключатель	n1040251	
005	C00058466				разм. выключатель		
005	C00063971				однополюсный выключатель		
006	C00065987				шумопоглощающий фильтр		
007	C00065975				таймер elbi 0748/1.a/2.a	n1040178	
009	C00075456				красная сигнальная лампочка f.		
010	C00033058				регулируемый термостат		
012	C00050186				опора реле давления		
016	C00075352			1 x C00097732	прямой ящик моющего средства		
017	C00074650				реле давления 2-уровн. i 115-85		
018	C00081560			1 x C00097732	воронка		
				1 x C00099206			
019	C00034325			1 x C00103833	pressure switch hose l 560 mm		
				1 x C00103834			
020	C00019755				устройство противоударное		
021	C00064530				фиксатор трубки реле давления		
022	C00103883				воздухоуловитель 1-ход. 117		
024	C00014917				прокладка термостата		
025	C00011140				микрозамедлитель		
027	C00045023				рукоятка фильтра askoll/plaset		
027	C00045025				прокладка фильтра askoll/plaset		
027	C00045027				насосный фильтр askoll/plaset		
028	C00050334			1 x C00085617	асинхр.самоочищ. насос с	n1040223	
028	C00085617				синхр.самоочищ. насос + сбор		
029	C00052497			1 x C00082723	оцинков.винт m6 x 30		
030	C00104675				втулка штифта двигателя		
031	C00040931				опорный штырь двигателя		
032	C00040935				гайка m8 самоконтрящаяся		
032	C00041843				шайба плоская 8,5x17x1,5		
033	C00050187				бел.пласт.маточная гайка		
034	C00054723				электродвигатель 2/16 пол.		
037	C00055036				защита нагревательного		

1180310

Spare parts list

Ref.	Code	С сер.№	По	Substitute	Description	Notice	Industrial
038	C00047174				гайка самоконтрящаяся m 5		
038	C00081554			1 x C00084391 1 x C00087885	сопротивл. с тепловым		
041	C00074643				конденсатор + скоба 16		
046	C00075812				крышка воронки 1 ev		
047	C00064534				прокладка воронки		
047	C00074586				электроклапан ie2u 7 lt.		
048	C00005572				прокладка заливочного шланга		
049	C00005781				фильтр заливочного шланга		
050	C00003070				залив.шланг 1500 mm		
052	C00081617				проводка +таймер elbi 0748/2.a		
054	C00047069			1 x C00097834	крышка присадок		

Notices

n1040200: Electrovalve drill hole plug for Teverola production cabinets.

From the registration no. 10601.0001 on all Washing machines produced in the Teverola plant have been using cabinets with two electrovalve drill holes.

If the model produced provides for one only electrovalve, then one drill hole is capped by using the appropriate plug code 083796.

The cabinets handled by After Sales Service with two electrovalve drill holes where used on models with one only electrovalve should use the plug.

n1040213: Use of the porthole code 081890.

All the washing machines produced in the Teverola Plant that use the porthole code 075320, should be replaced with the porthole code 081890 when an intervention occurs.

n1040223: Discharge pump "RAST5" for Teverola washing machines

From the registration no. 11022.0001, the Teverola produced washing machines involved by the present Notice, will use new discharge pumps code 085618 and 085617 in substitution respectively to the preceding codes: 044998 and 050334.

The new pumps may be used in place of the preceding pumps ensuring that the terminals are equipped with faston covers.

The pre-modification pumps will be handled regularly until stock depletion.

n1040230: Modified shock absorber bracket - Comunanza plant

From the registration no. 11107.0001, the washing machines and Washer-Dryers produced in the Comunanza factory Plant, have used modified shock absorbers with the bracket that fixes onto the cabinet.

The codes for the new shock absorbers are:

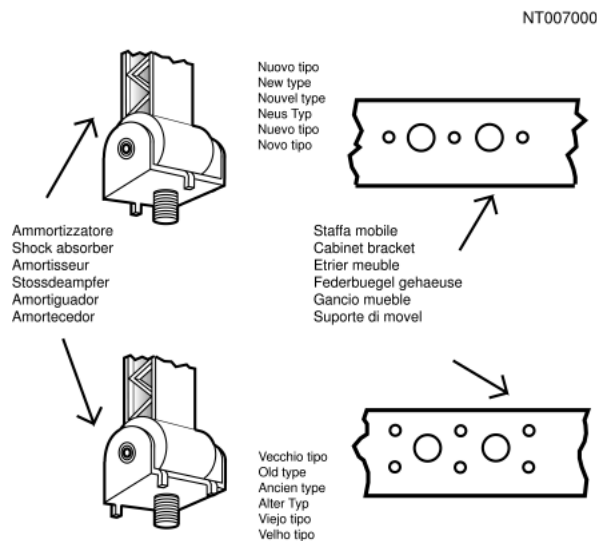
Code 086372 - Shock absorber 120 N (11105);

Code 086515 - Shock absorber 80 N (11105);

The modification also involved the cabinets in the fixing area that for the shock absorbers represent a different type of slotting (see enclosed figure).

To avoid the proliferation of the codes, the modified cabinets are handled with the same SAT code as the pre-modification, when replacing the cabinet you will need to check the registration number of the appliance.

In order to perform a proper task the intervention of the cabinet replacement it is recommended, that at least in the initial phase, to keep both the combination of shock absorbers in stock. The shock absorbers code 066184 and 064503 will continue to be normally handled.



n1040235: Restored the fixing of the anterior counterweight with platelets inserted in the tub

From the 11105.0001 registration number on the washing machines with plastic tubs produced in the Teverola factory, the fixing of the anterior counterweight is restored with platelets inserted in the tub instead of those realised with self-threading screws, the system described in Notice N1040184.

The tubs maintain the same SAT code and are provided with the following particulars:

N° 3 Screws code cod. 014342;

N° 3 Conical washer cod. 055018;

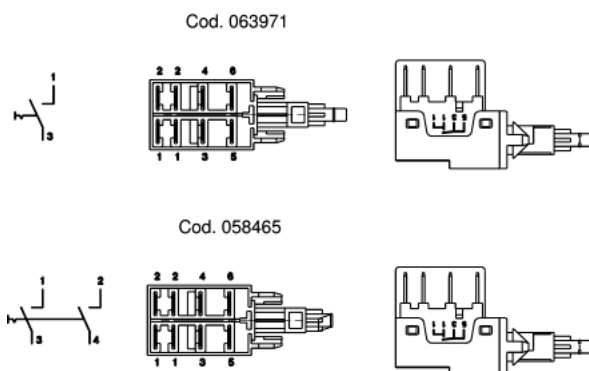
N° 3 Plain washer cod. 034336.

Whenever the necessity may arise on a tub, proceed with diverting the self-threading screws that block the anterior counterweight., as it's compulsory to execute the fixing again avoiding in time a possible loosening and thus the breaking of the tub by utilising the registered screws (cod. 014342), the conical washers (cod. 055018), the plain washers (cod. 034336) and the platelets (cod. 055038).

n1040251: Induction motors NO On/Off switch

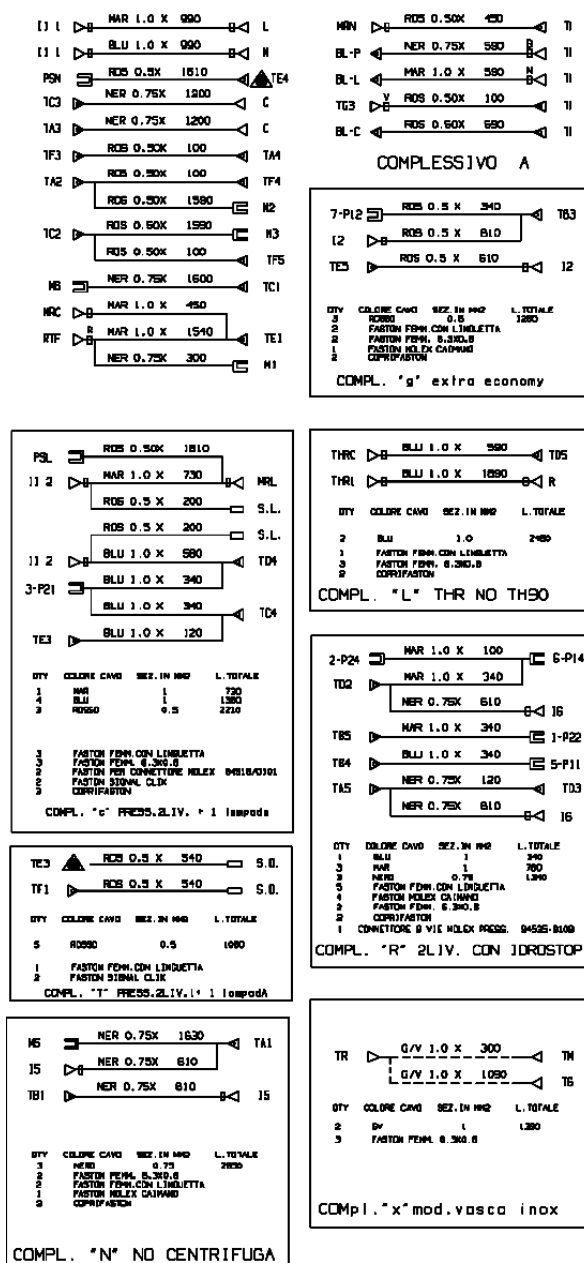
From serial number 20304.0001, the NO On/Off switch code 063971 replaces the NO + NO double On/Off switch code 058465 on all the washing machines with induction motor produced in the Teverola factory.

Both switches are regularly managed, therefore in case of repair the serial number of the unit must be taken into consideration.



Electric schemes and links

Cod. ce027000



CE027000

Legend

Legend: ce027000

AQS	Aquastop electrovalve	Mzbn/MTA	zbn timer motor
B	Buzzer	N	Neutral or Terminal Board
BC	Blocco Cesto	NC	Spin cycle exclusion
BF	Terminal board contact, motor fan and dryer	P	Pressure switch
BP	Buzzer	P1	1st level pressure cut-off switch
C	Condensator	P2	2nd level pressure cut-off switch
CA	Condensator	PA	High speed potentiometer
DV	Switching device	PB	Low speed potentiometer
EF/CL	Electro-Valve Cold Water / Bleach	PL	Pure Wool
EF/L	Electro-Valve Cold Water / Wash	PM	Motor Thermoprotector
EF/P	Electro-Valve Cold Water / Prewash	PR	Timer programmer or Pressure switch
ER	Exclude Heating Element	PS	Drain pump
ET	Thermostat disactivation	R	Heating element
EV	Electrovalve	RE	Relay
EVA	Dryer electrovalve	RR	Heating element
EVC	Hot water electrovalve	RV	Speed regulator
EVF	Elettrovalvola acqua fredda	Ras/RA	Dryer heating element
EVL	Wash electrovalve	S	LED
EVP	Pre Wash electrovalve	SL	Line LED
FA	Antijamming filter	SO	Door LED
FD	Delicate drying cycle thermostat	SR	Heating LED
FE	Strong drying cycle thermostat	ST	Temperature selector
FRT	Thermofusible Heating Element	SV	Speed Selector for Spin
I	Inverter	T	Timer contacts
II...2...3..	Switches/switching devices	TA	Drying timer contacts
IA	Switch On/Off	TB	Low Temperature Thermostat
IC	Switch N.C. - 1/2 Load	TC	Spider wheel earth
ID	Switch display	TFL	Flange earth
IE	Water Saving Device	TG	Main earth
IF	Switch - Spin Reduction	TH	Thermostat
IP	Door switch	TH1	1st temperature thermostat
IR	Line switch	TH2	2nd temperature thermostat
IS	Water-stop	TH3	3rd temperature thermostat

L	Line or Lamp	THF	Operating thermostat
LB	Low Level	THR	Adjustable thermostat
LN	Normal Level	TM	Motor earth
LS	Pilot lamp	TMB	Main cabinet earth
M	Earth-symbol	TMP	Motor thermal protector
MC	Spin cycle motor	TMS	Thermostop
MI	MOTOR WITH PULLEY	TP	Thermal protector
ML	Wash cycle motor	TPS	Drain pump earth
MO	Terminal Board	TR	Heating element earth
MP	Door dip-switch	TS	Safety thermostat
MR	Thermal Lock	TT	Timer earthing connection
MT	Timer motor	TTH	Earthing Thermostat
MV	Motor fan	TV	Tank earth
MV -Ras	Dryer heating element	ZBN	Timer

Cod. lg001400

LG001401

mod.W642TX(EX)

Legend

Legend: lg001400

AQS	Aquastop electrovalve	Mzbn/MTA	zbn timer motor
B	Buzzer	N	Neutral or Terminal Board
BC	Blocco Cesto	NC	Spin cycle exclusion
BF	Terminal board contact, motor fan and dryer	P	Pressure switch
BP	Buzzer	P1	1st level pressure cut-off switch
C	Condensator	P2	2nd level pressure cut-off switch
CA	Condensator	PA	High speed potentiometer
DV	Switching device	PB	Low speed potentiometer
EF/CL	Electro-Valve Cold Water / Bleach	PL	Pure Wool
EF/L	Electro-Valve Cold Water / Wash	PM	Motor Thermoprotector
EF/P	Electro-Valve Cold Water / Prewash	PR	Timer programmer or Pressure switch
ER	Exclude Heating Element	PS	Drain pump
ET	Thermostat disactivation	R	Heating element
EV	Electrovalve	RE	Relay
EVA	Dryer electrovalve	RR	Heating element
EVC	Hot water electrovalve	RV	Speed regulator
EVF	Elettrovalvola acqua fredda	Ras/RA	Dryer heating element
EVL	Wash electrovalve	S	LED
EVP	Pre Wash electrovalve	SL	Line LED
FA	Antijamming filter	SO	Door LED
FD	Delicate drying cycle thermostat	SR	Heating LED
FE	Strong drying cycle thermostat	ST	Temperature selector
FRT	Thermofusible Heating Element	SV	Speed Selector for Spin
I	Inverter	T	Timer contacts
II..2..3..	Switches/switching devices	TA	Drying timer contacts
IA	Switch On/Off	TB	Low Temperature Thermostat
IC	Switch N.C. - 1/2 Load	TC	Spider wheel earth
ID	Switch display	TFL	Flange earth
IE	Water Saving Device	TG	Main earth
IF	Switch - Spin Reduction	TH	Thermostat
IP	Door switch	TH1	1st temperature thermostat
IR	Line switch	TH2	2nd temperature thermostat
IS	Water-stop	TH3	3rd temperature thermostat

L	Line or Lamp	THF	Operating thermostat
LB	Low Level	THR	Adjustable thermostat
LN	Normal Level	TM	Motor earth
LS	Pilot lamp	TMB	Main cabinet earth
M	Earth-symbol	TMP	Motor thermal protector
MC	Spin cycle motor	TMS	Thermostop
MI	MOTOR WITH PULLEY	TP	Thermal protector
ML	Wash cycle motor	TPS	Drain pump earth
MO	Terminal Board	TR	Heating element earth
MP	Door dip-switch	TS	Safety thermostat
MR	Thermal Lock	TT	Timer earthing connection
MT	Timer motor	TTH	Earthing Thermostat
MV	Motor fan	TV	Tank earth
MV -Ras	Dryer heating element	ZBN	Timer

Electric schemes and links

Cod. Ig033000



Legend

Legend: lg033000

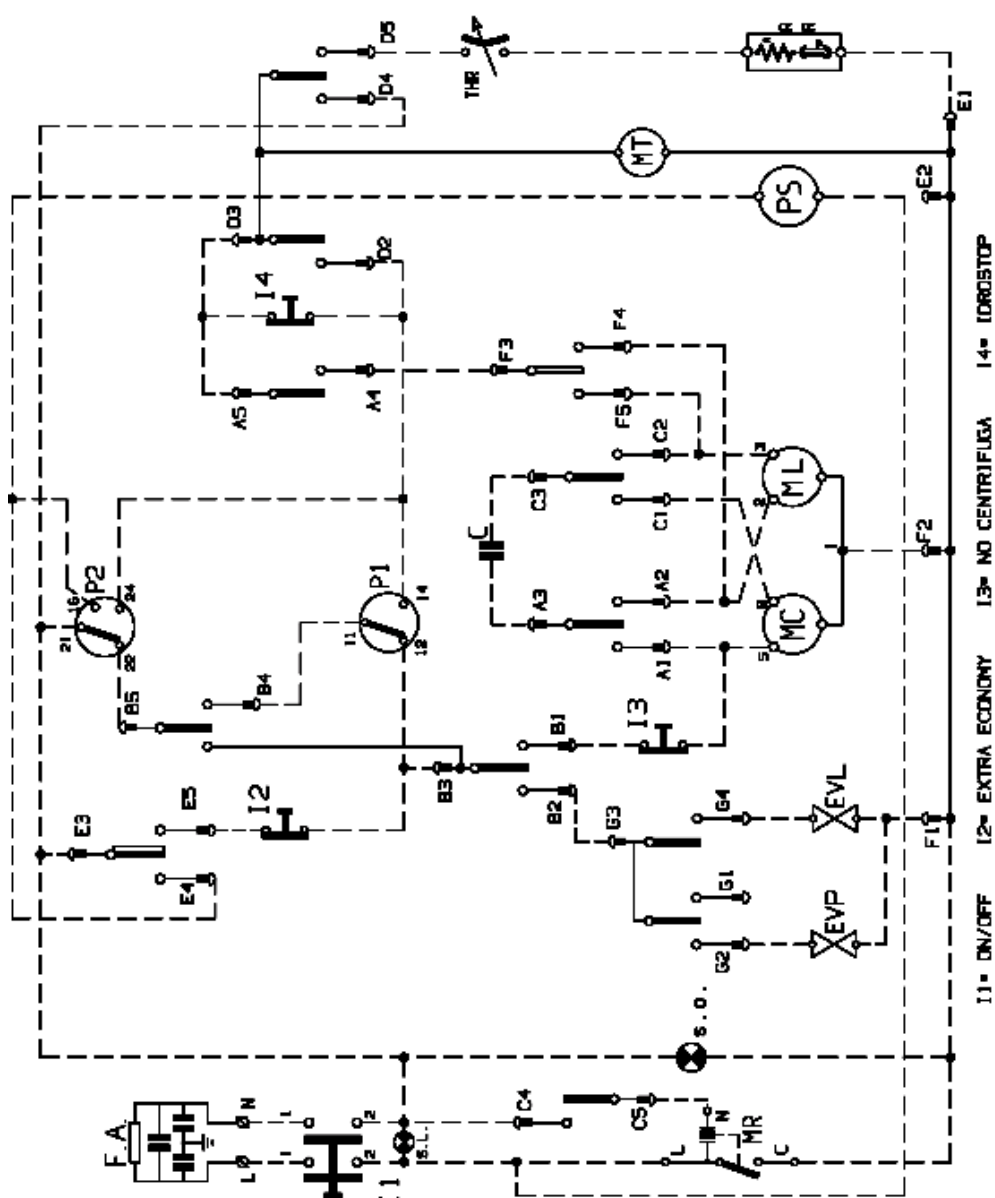
AQS	Aquastop electrovalve	Mzbn/MTA	zbn timer motor
B	Buzzer	N	Neutral or Terminal Board
BC	Blocco Cesto	NC	Spin cycle exclusion
BF	Terminal board contact, motor fan and dryer	P	Pressure switch
BP	Buzzer	P1	1st level pressure cut-off switch
C	Condensator	P2	2nd level pressure cut-off switch
CA	Condensator	PA	High speed potentiometer
DV	Switching device	PB	Low speed potentiometer
EF/CL	Electro-Valve Cold Water / Bleach	PL	Pure Wool
EF/L	Electro-Valve Cold Water / Wash	PM	Motor Thermoprotector
EF/P	Electro-Valve Cold Water / Prewash	PR	Timer programmer or Pressure switch
ER	Exclude Heating Element	PS	Drain pump
ET	Thermostat disactivation	R	Heating element
EV	Electrovalve	RE	Relay
EVA	Dryer electrovalve	RR	Heating element
EVC	Hot water electrovalve	RV	Speed regulator
EVF	Elettrovalvola acqua fredda	Ras/RA	Dryer heating element
EVL	Wash electrovalve	S	LED
EVP	Pre Wash electrovalve	SL	Line LED
FA	Antijamming filter	SO	Door LED
FD	Delicate drying cycle thermostat	SR	Heating LED
FE	Strong drying cycle thermostat	ST	Temperature selector
FRT	Thermofusible Heating Element	SV	Speed Selector for Spin
I	Inverter	T	Timer contacts
II..2..3..	Switches/switching devices	TA	Drying timer contacts
IA	Switch On/Off	TB	Low Temperature Thermostat
IC	Switch N.C. - 1/2 Load	TC	Spider wheel earth
ID	Switch display	TFL	Flange earth
IE	Water Saving Device	TG	Main earth
IF	Switch - Spin Reduction	TH	Thermostat
IP	Door switch	TH1	1st temperature thermostat
IR	Line switch	TH2	2nd temperature thermostat
IS	Water-stop	TH3	3rd temperature thermostat

L	Line or Lamp	THF	Operating thermostat
LB	Low Level	THR	Adjustable thermostat
LN	Normal Level	TM	Motor earth
LS	Pilot lamp	TMB	Main cabinet earth
M	Earth-symbol	TMP	Motor thermal protector
MC	Spin cycle motor	TMS	Thermostop
MI	MOTOR WITH PULLEY	TP	Thermal protector
ML	Wash cycle motor	TPS	Drain pump earth
MO	Terminal Board	TR	Heating element earth
MP	Door dip-switch	TS	Safety thermostat
MR	Thermal Lock	TT	Timer earthing connection
MT	Timer motor	TTH	Earthing Thermostat
MV	Motor fan	TV	Tank earth
MV -Ras	Dryer heating element	ZBN	Timer

Electric schemes and links

Cod. se078400

SE078400



Legend

Legend: se078400

AQS	Aquastop electrovalve	Mzbn/MTA	zbn timer motor
B	Buzzer	N	Neutral or Terminal Board
BC	Blocco Cesto	NC	Spin cycle exclusion
BF	Terminal board contact, motor fan and dryer	P	Pressure switch
BP	Buzzer	P1	1st level pressure cut-off switch
C	Condensator	P2	2nd level pressure cut-off switch
CA	Condensator	PA	High speed potentiometer
DV	Switching device	PB	Low speed potentiometer
EF/CL	Electro-Valve Cold Water / Bleach	PL	Pure Wool
EF/L	Electro-Valve Cold Water / Wash	PM	Motor Thermoprotector
EF/P	Electro-Valve Cold Water / Prewash	PR	Timer programmer or Pressure switch
ER	Exclude Heating Element	PS	Drain pump
ET	Thermostat disactivation	R	Heating element
EV	Electrovalve	RE	Relay
EVA	Dryer electrovalve	RR	Heating element
EVC	Hot water electrovalve	RV	Speed regulator
EVF	Elettrovalvola acqua fredda	Ras/RA	Dryer heating element
EVL	Wash electrovalve	S	LED
EVP	Pre Wash electrovalve	SL	Line LED
FA	Antijamming filter	SO	Door LED
FD	Delicate drying cycle thermostat	SR	Heating LED
FE	Strong drying cycle thermostat	ST	Temperature selector
FRT	Thermofusible Heating Element	SV	Speed Selector for Spin
I	Inverter	T	Timer contacts
II...2...3..	Switches/switching devices	TA	Drying timer contacts
IA	Switch On/Off	TB	Low Temperature Thermostat
IC	Switch N.C. - 1/2 Load	TC	Spider wheel earth
ID	Switch display	TFL	Flange earth
IE	Water Saving Device	TG	Main earth
IF	Switch - Spin Reduction	TH	Thermostat
IP	Door switch	TH1	1st temperature thermostat
IR	Line switch	TH2	2nd temperature thermostat
IS	Water-stop	TH3	3rd temperature thermostat

L	Line or Lamp	THF	Operating thermostat
LB	Low Level	THR	Adjustable thermostat
LN	Normal Level	TM	Motor earth
LS	Pilot lamp	TMB	Main cabinet earth
M	Earth-symbol	TMP	Motor thermal protector
MC	Spin cycle motor	TMS	Thermostop
MI	MOTOR WITH PULLEY	TP	Thermal protector
ML	Wash cycle motor	TPS	Drain pump earth
MO	Terminal Board	TR	Heating element earth
MP	Door dip-switch	TS	Safety thermostat
MR	Thermal Lock	TT	Timer earthing connection
MT	Timer motor	TTH	Earthing Thermostat
MV	Motor fan	TV	Tank earth
MV -Ras	Dryer heating element	ZBN	Timer