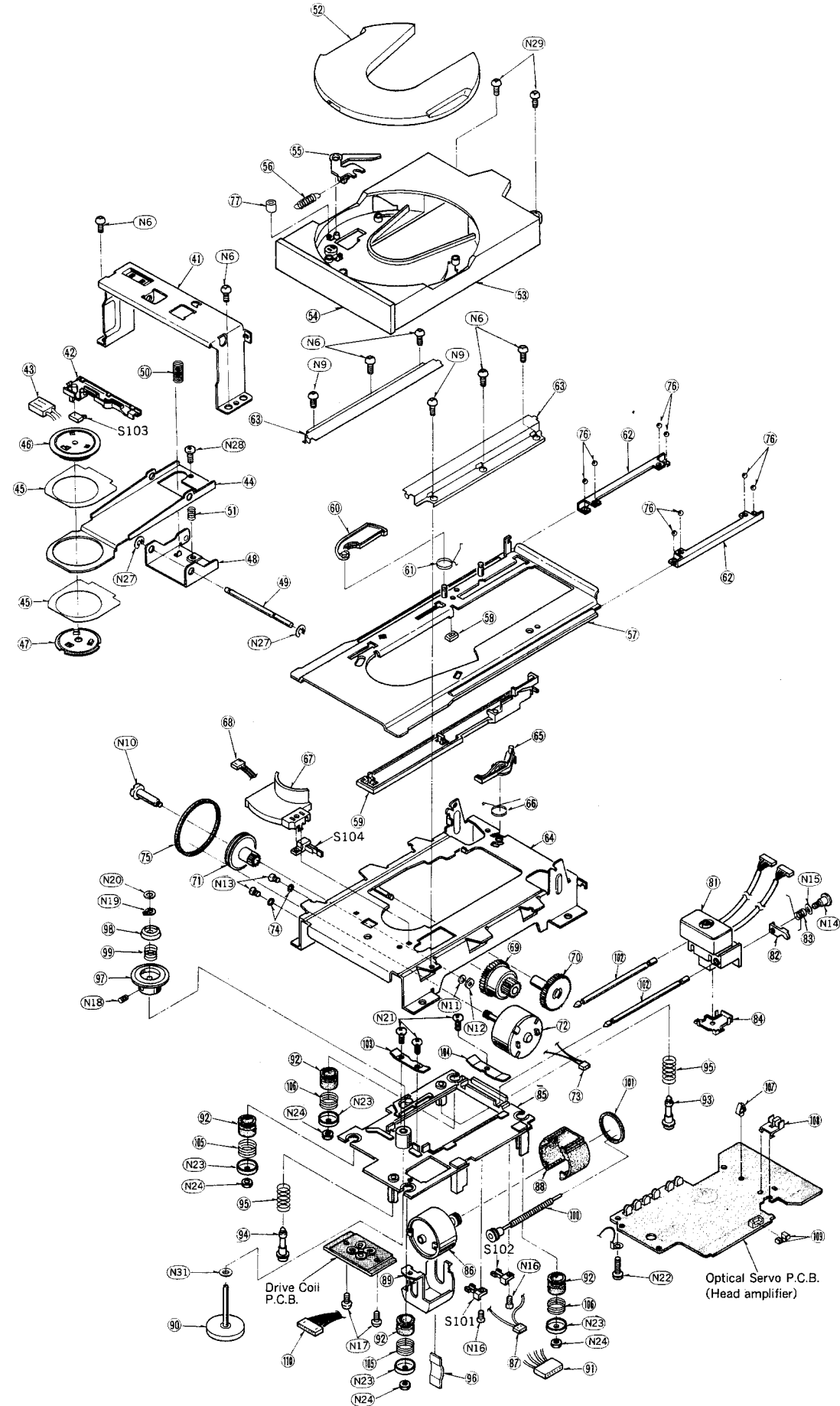
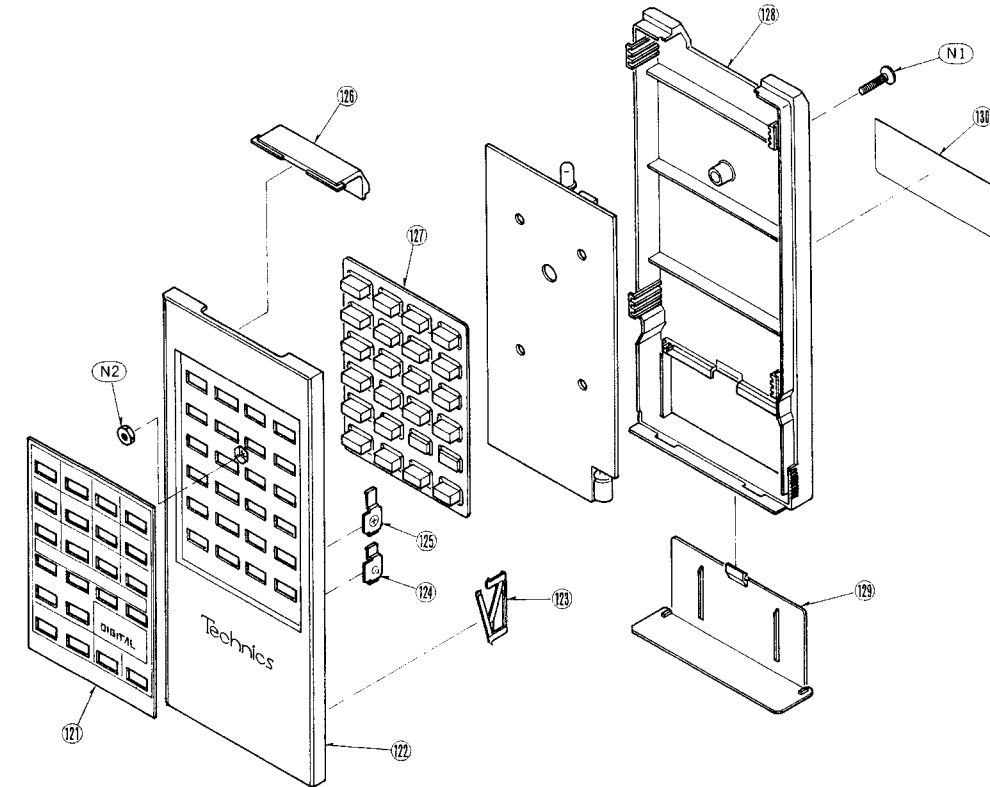


• Loading drive mechanism and optical deck unit parts



• Remote control unit parts

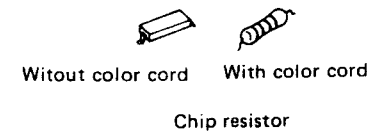


■ HOW TO REPLACE CHIPS

(Resistor, capacitor and jumper)

• Removing procedure

1. Completely remove the solder from both ends of the chip by use of solder sucker.
2. Touch the soldering iron to the end of the chip as shown in Fig. 22, then turn the tweezers in the direction of the arrow.



Do not re-use chip resistor or capacitor without color cord.

• Replacing procedure

1. Place solder on the foil where the chip is fitted. Then solder the chip by holding the soldering iron as shown in Fig. 23.

Note:

1. If the chip jumper is removed, connect a coated lead wire to the part. (See Fig. 24). Chip jumper is marked with "J" on the printed circuit board.

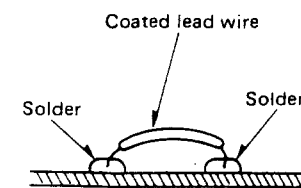


Fig. 24

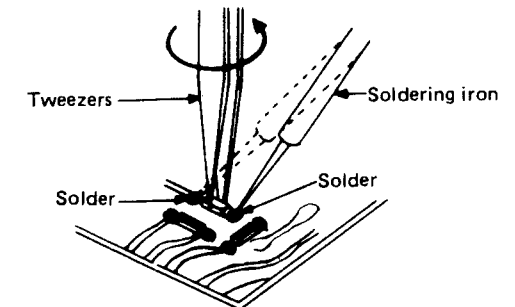


Fig. 22

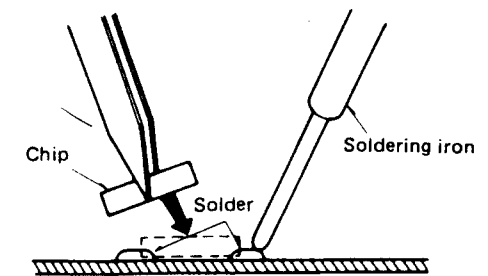


Fig. 23

• Note for replacing chips

1. Do not heat the chip more than 3 seconds.
2. Do not rub the electrode against the chip.
3. Use the tweezers with care not to damage the surface of the chip.
4. It is desirable to use a pencil type soldering iron. And use soldering iron less than 60W.