

MODEL NAME : DT5-BF18DN

(World Standard Electronic Tuner)

Picture



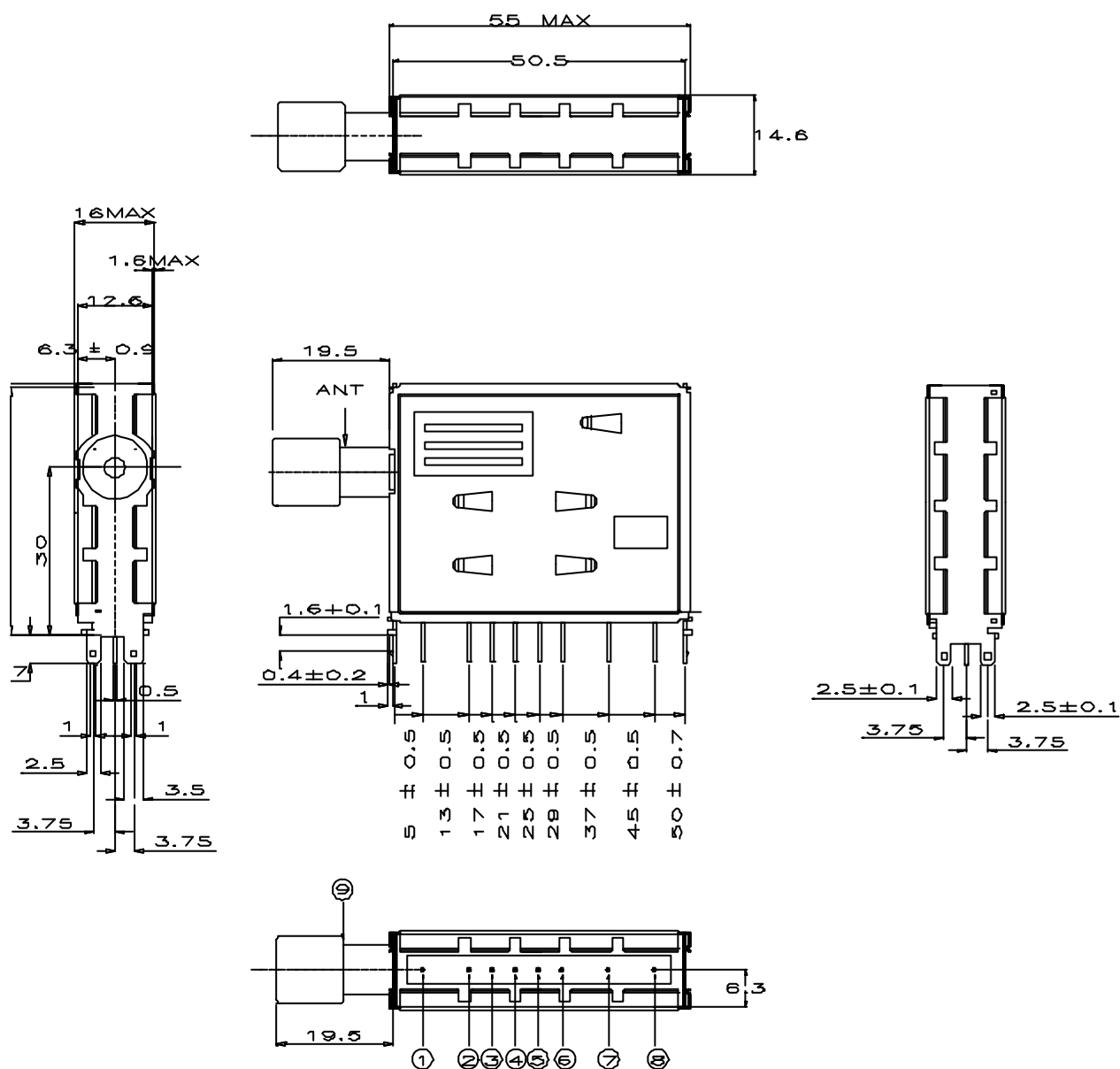
Feature

- All channel assignments are available, (Europe, China)
- WORLD STANDARD PIN CONFIGURATION.
- Adoption of the MIXER+OSC IC+PLL ONE CHIP IC against the interference and spurious characteristics.
- C.C.I.R. 470MHz HYPER Type
- C.C.I.R type meet to the CENELEC.
- B+ voltage is 5V.
- Witch can direct-drive the SAW and asymmetrical.

Specifications

No	Item	Specifications	No	Item	Specifications																										
1-1	Tuning System	Frequency synthesizer	1-6	Power Gain	<table><tr><td>Band</td><td>Spec</td></tr><tr><td>VHF Low</td><td>36dB Typ</td></tr><tr><td>VHF High</td><td>35dB Typ</td></tr><tr><td>UHF</td><td>35dB Typ</td></tr></table>	Band	Spec	VHF Low	36dB Typ	VHF High	35dB Typ	UHF	35dB Typ																		
Band	Spec																														
VHF Low	36dB Typ																														
VHF High	35dB Typ																														
UHF	35dB Typ																														
1-2	IF frequency	PIF : 38,90MHz CIF : 34,47MHz SIF : 33,40MHz																													
1-3	Receiving channel	VHF Low : S7~NZ1 CH VHF High : S36~S8 CH UHF : E69~S37 CH (CCIR+CATV+HYPER)	1-7	PLL SYSTEM	I ² C Bus																										
			1-8	Band Data	<table><tr><td></td><td>BS4</td><td>BS3</td><td>BS2</td><td>BS1</td></tr><tr><td>VHF Low</td><td>0</td><td>0</td><td>0</td><td>1</td></tr><tr><td>VHF High</td><td>0</td><td>0</td><td>1</td><td>0</td></tr><tr><td>UHF</td><td>1</td><td>0</td><td>0</td><td>0</td></tr></table>		BS4	BS3	BS2	BS1	VHF Low	0	0	0	1	VHF High	0	0	1	0	UHF	1	0	0	0						
						BS4	BS3	BS2	BS1																						
VHF Low	0	0	0	1																											
VHF High	0	0	1	0																											
UHF	1	0	0	0																											
1-4	Supply Voltage	<table><tr><td>Terminal</td><td>Supply Voltage</td><td>Tolerance</td></tr><tr><td>B+</td><td>5,0V</td><td>±0,1V</td></tr><tr><td>AGC</td><td>4,5V</td><td>0,0~4,5V</td></tr><tr><td>TU2</td><td>32,0V</td><td>±0,1V</td></tr></table>	Terminal	Supply Voltage	Tolerance	B+	5,0V	±0,1V	AGC	4,5V	0,0~4,5V	TU2	32,0V	±0,1V	1-9	Terminal Current	<table><tr><td rowspan="3">B+</td><td>UHF</td><td>typ 79mA</td><td>max 85mA</td></tr><tr><td>VHF High</td><td>typ 85mA</td><td>max 90mA</td></tr><tr><td>VHF Low</td><td>typ 76mA</td><td>max 80mA</td></tr><tr><td>TU2</td><td>ALL CH</td><td>typ 1mA</td><td>max 3mA</td></tr></table>	B+	UHF	typ 79mA	max 85mA	VHF High	typ 85mA	max 90mA	VHF Low	typ 76mA	max 80mA	TU2	ALL CH	typ 1mA	max 3mA
Terminal	Supply Voltage	Tolerance																													
B+	5,0V	±0,1V																													
AGC	4,5V	0,0~4,5V																													
TU2	32,0V	±0,1V																													
B+	UHF	typ 79mA	max 85mA																												
	VHF High	typ 85mA	max 90mA																												
	VHF Low	typ 76mA	max 80mA																												
TU2	ALL CH	typ 1mA	max 3mA																												
1-5	Output Impedance	75 ohm Unbalanced/balanced	1-10	Application Standard	Comply with CENELEC																										
			1-11	Jack-CON	DIN, PHONE																										

Drawing **(DT5-BF18DN)**



TERMINAL NO	1	2	3	4	5	6	7	8	9	
TERMINAL NAME	AGC	CAS	SCL	SDA	B+		BT	IF OUT	U/V IN	