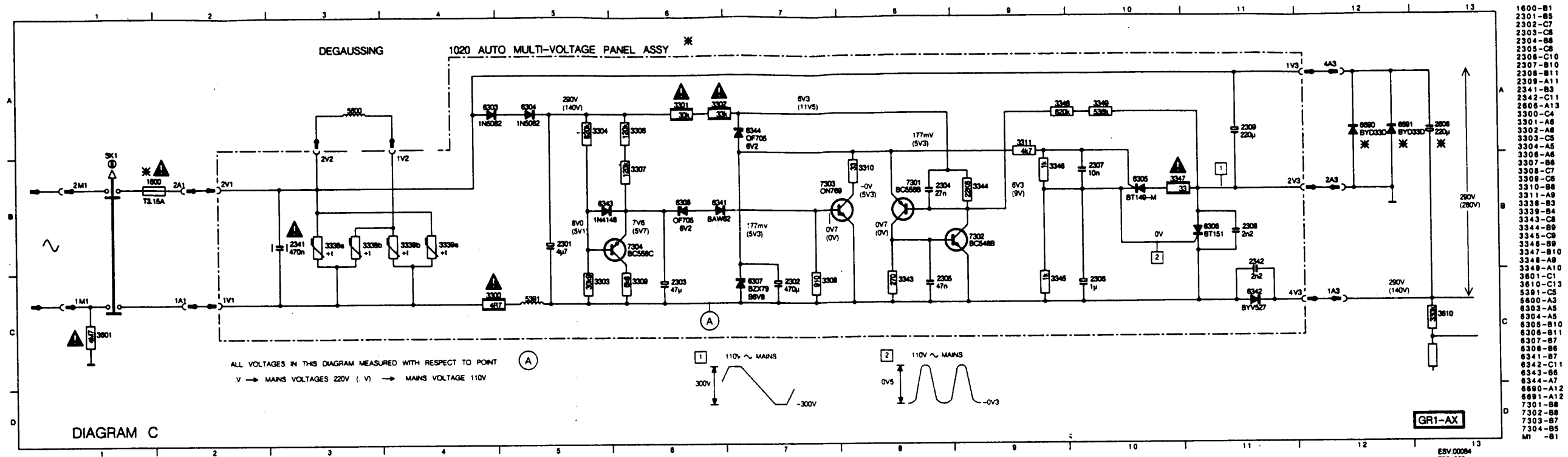
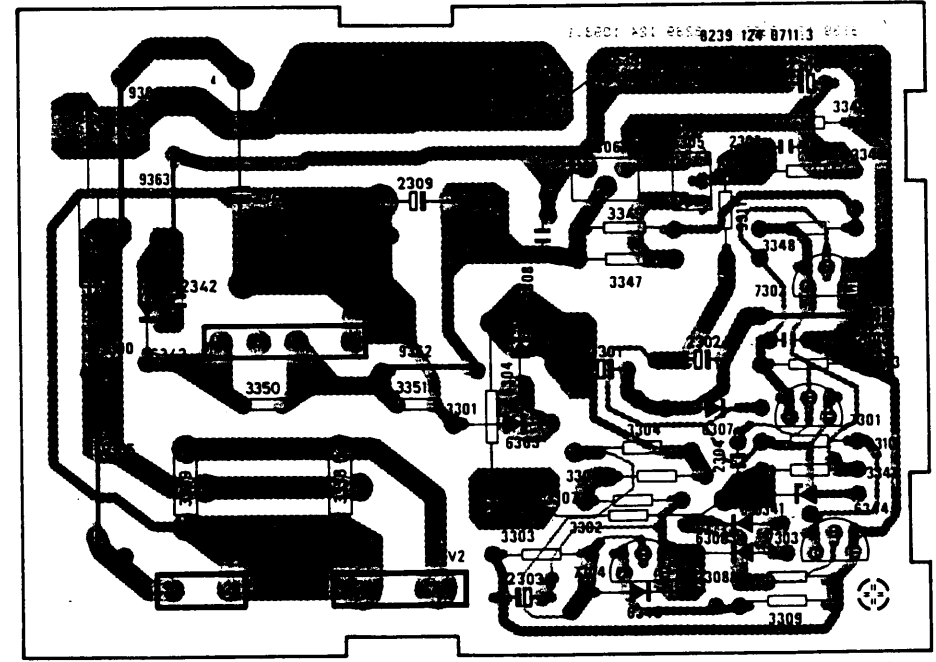


MULTI VOLTAGE PANEL



- 1600-B1
- 3301-B6
- 2302-C7
- 2303-C8
- 2304-B8
- 2305-C8
- 2306-C10
- 2307-B10
- 2308-B11
- 2309-A11
- 2341-B3
- 2342-C11
- 2806-A13
- 3300-C4
- 3301-A6
- 3302-A6
- 3303-C5
- 3304-A5
- 3306-A6
- 3307-B6
- 3308-C7
- 3309-C6
- 3310-B8
- 3311-A9
- 3338-B3
- 3339-B4
- 3343-C8
- 3344-B9
- 3345-C8
- 3346-B9
- 3347-B10
- 3348-A8
- 3349-A10
- 3601-C1
- 3610-C13
- 5381-C5
- 6300-A3
- 6303-A5
- 6304-A5
- 6305-B10
- 6306-B11
- 6307-B7
- 6308-B6
- 6341-B7
- 6342-C11
- 6343-B6
- 6344-A7
- 6890-A12
- 6891-A12
- 7301-B8
- 7302-B8
- 7303-B7
- 7304-B5
- M1 -B1
- SK1 -B1
- V2 -B3
- V3 -A12

AUTOMATIC MULTIVOLTAGE PANEL



44 650 A11

Various						
	4822 265 20439	2-FOLD CONNECTOR	3311	4822 116 52426	4k7 5% 0,5W	
	4822 267 40646	2-FOLD CONNECTOR	3338	4822 116 40135	P.T.C.	
	4822 265 20441	3-FOLD CONNECTOR	3339	4822 116 40135	P.T.C.	
			3343	4822 116 52412	270Ω 5% 0,5W	
	2301	4822 124 22264	4... 20% 400V	3344	5322 116 53326	22k6 1% 0,6W
	2302	5322 124 21349	470 μF 20% 10V	3345	4822 116 52391	1k 5% 0,5W
	2303	4822 124 40433	47 μF 20% 25V	3346	4822 116 52391	1k 5% 0,5W
	2304	4822 121 41791	47 nF 10% 100V	3347	4822 111 30522	33Ω 5% 0,33W
	2305	4822 121 41791	47 nF 10% 100V	3348	5322 116 53132	820k 1% 0,6W
	2306	4822 124 40242	1 μF 20% 63V	3349	5322 116 80147	536k 1% 0,6W
	2307	4822 121 42004	10 nF 20% 400V			
	2308	4822 122 40591	2,2 nF 10% 1kV	6306	5322 130 24081	BT151-650R
	2309	4822 124 22184	220 μF 20% 250V	5391	4822 157 52143	26,5 μH
	2341	4822 121 51457	470 pF 10% 275V	6303	4822 130 80858	1N5062
	2342	4822 122 40591	2,2 nF 10% 1kV	6304	4822 130 80858	1N5062
			6305	4822 130 20215	SFOR5J43	
3300	4822 115 10075	4,7 Ω 7W	6307	4822 130 34278	BZX79-B6V8	
3301	4822 116 52133	30k 5% 2,5W	6308	4822 130 34167	BZX79-F6V2	
3302	4822 116 51736	33k 5% 2,5W	6341	4822 130 30613	BAW62	
3303	5322 116 80298	30k9 1% 0,6W	6342	4822 130 31509	BY527	
3304	4822 116 81831	820k 1% 0,6W	6343	4822 130 30621	1N4148	
3306	4822 116 52845	120k 1% 0,6W	6344	4822 130 34167	BZX79-F6V2	
3307	4822 116 52845	120k 1% 0,6W				
3308	4822 116 52868	910Ω 1% 0,6W	7301	4822 130 44197	BC558B	
3309	4822 116 52441	6k8 5% 0,5W	7302	4822 130 40937	BC548B	
3310	4822 116 52358	33Ω 5% 0,5W	7303	4822 130 41436	ON769	
			7304	5322 130 60068	BC558C	