



SCPH-70000series

SCPH-70000 series

SERVICE MANUAL 1st edition
for GH-035 BOARD
(LCG-chassis)

PlayStation®2



Sony Computer Entertainment Inc.
Customer Service Department



SAFETY CHECK-OUT

After correcting the original service problem, perform the following safety checks before releasing the set to the customer:

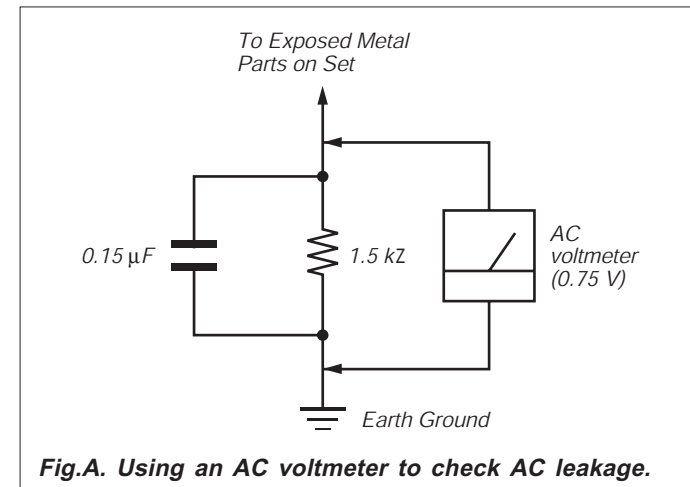
1. Check the area of your repair for unsoldered or poorly-soldered connections. Check the entire board surface for solder splashes and bridges.
2. Check the interboard wiring to ensure that no wires are "pinched" or contact high-wattage resistors.
3. Look for unauthorized replacement parts, particularly transistors, that were installed during a previous repair. Point them out to the customer and recommend their replacement.
4. Look for parts which, though functioning, show obvious signs of deterioration. Point them out to the customer and recommend their replacement.
5. Check the line cord for cracks and abrasion. Recommend the replacement of any such line cord to the customer.
6. Check the B+ voltage to see it is at the values specified.
7. Check the metal trim, "metallized" knobs, screws, and all other exposed metal parts for AC leakage. Check leakage as described right.

LEAKAGE TEST



The AC leakage from any exposed metal part to earth ground and from all exposed metal parts to any exposed metal part having a return to chassis, must not exceed 0.5 mA (500 microampers.).

Leakage current can be measured by any one of three methods.

1. A commercial leakage tester, such as the Simpson 229 or RCA WT-540A. Follow the manufacturers' instructions to use these instruments.
2. A battery-operated AC milliammeter. The Data Precision 245 digital multimeter is suitable for this job.
3. Measuring the voltage drop across a resistor by means of a VOM or battery-operated AC voltmeter. The "limit" indication is 0.75 V, so analog meters must have an accurate low-voltage scale. The Simpson 250 and Sanwa SH-63Trd are examples of a passive VOM that is suitable. Nearly all battery operated digital multimeters that have a 2 V AC range are suitable. (See Fig. A)

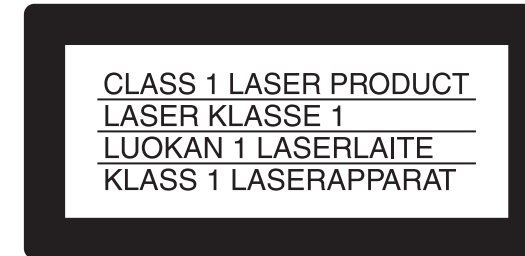


SAFTY-RELATED COMPONENT WARNING!!

COMPONENTS IDENTIFIED BY MARK  OR DOTTED LINE WITH MARK  ON THE SCHEMATIC DIAGRAMS AND IN THE PARTS LIST ARE CRITICAL TO SAFE OPERATION, REPLACE THESE COMPONENTS WITH SONY PARTS WHOSE PART NUMBERS ARE APPEAR AS SHOWN IN THIS MANUAL OR IN SUPPLEMENTS PUBLISHED BY SONY.

CAUTION

The use of optical instruments with this product will increase eye hazard. As the laser beam used in this CD/DVD ROM Drive is harmful to eyes, do not attempt disassemble the cabinet. Refer servicing to qualified personnel only.



This appliance is classified as a CLASS 1 LASER product.

CAUTION:

The use of optical instrument with this product will increase eye hazard.

CAUTION

Use of controls or adjustments or performance of procedures other than those specified herein may result in hazardous radiation exposure.

WARNING!!

WHEN SERVICING , DO NOT APPROACH THE LASER EXIT WITH THE EYE TOO CLOSELY. IN CASE IT IS NECESSARY TO CONFIRM LASER BEAM EMISSION, BE SURE TO OBSERVE FROM A DISTANCE OF MORE THAN 25cm FROM THE SERFACE OF THE OBJECTIVE LENS ON THE OPTICAL PICK-UP BLOCK.

CAUTION

Danger of explosion if battery is incorrectly replaced. Replace only with the same or equivalent type recommended by the manufacturer. Discard used batteries according to the manufacturer's instructions.

Lithium Batteries

If an equipment is provided with a replaceable lithium battery, the following applies:

- if the battery is placed in an OPERATOR ACCESS AREA, there shall be a warning close to the battery or in both the operating and the service instructions:
- if the battery is placed elsewhere in the equipment, there shall be a warning close to the battery or in the service instructions.

Table of contents

1. CIRCUIT DIAGRAM (GH -035)

1-1. EE+GS + RDRAM -----	05
1-2. IOP -----	06
1-3. POWER SUPPLY -----	07
1-4. AUDIO + Boot ROM -----	08
1-5. uCON + DSP -----	09
1-6. Analog (for TI) -----	10
1-7. 6chDVE+AVCN -----	11
1-8. LAN -----	12
1-9. Switch Board -----	13

2. PRINTED WIRING BOARD

2-1. GH -035 Board (Side A) -----	14
2-2. GH -035 Board (Side B) -----	15

3. EXPLODED VIEWS

3-1. OVERALL AND MAIN BLOCK -----	16
3-2. COVER UPPER ASSY AND STAND NUT BLOCK -----	17
3-3. PACKING INSTRUCTIONS -----	18

4. ELECTRICAL PART LIST



4-1. GH-035-03 FJT C4105+C4106 -----	20
4-2. GH-035-03 TXI C4105+C4106 -----	26

SECTION1 CIRCUIT DIAGRAM

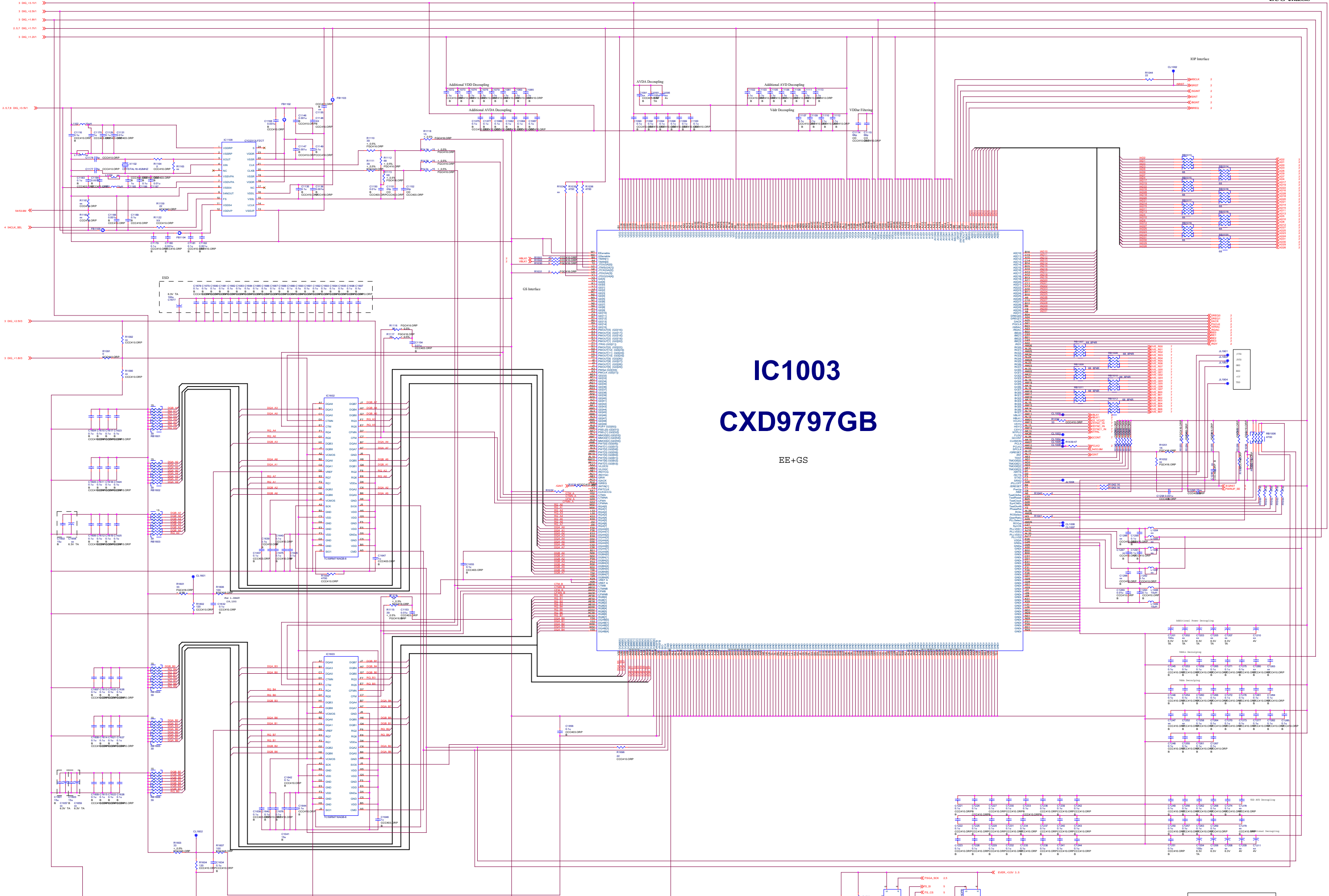
Note on Circuit Diagrams

- All capacitors are in μF unless otherwise noted. pF: $\mu \mu F$
50WV or less are not indicated except for electrolytics
and tantalums.
- All resistors are in Ω and $\frac{1}{4} W$ or less unless otherwise
specified.
- % :indicates tolerance.

Note:

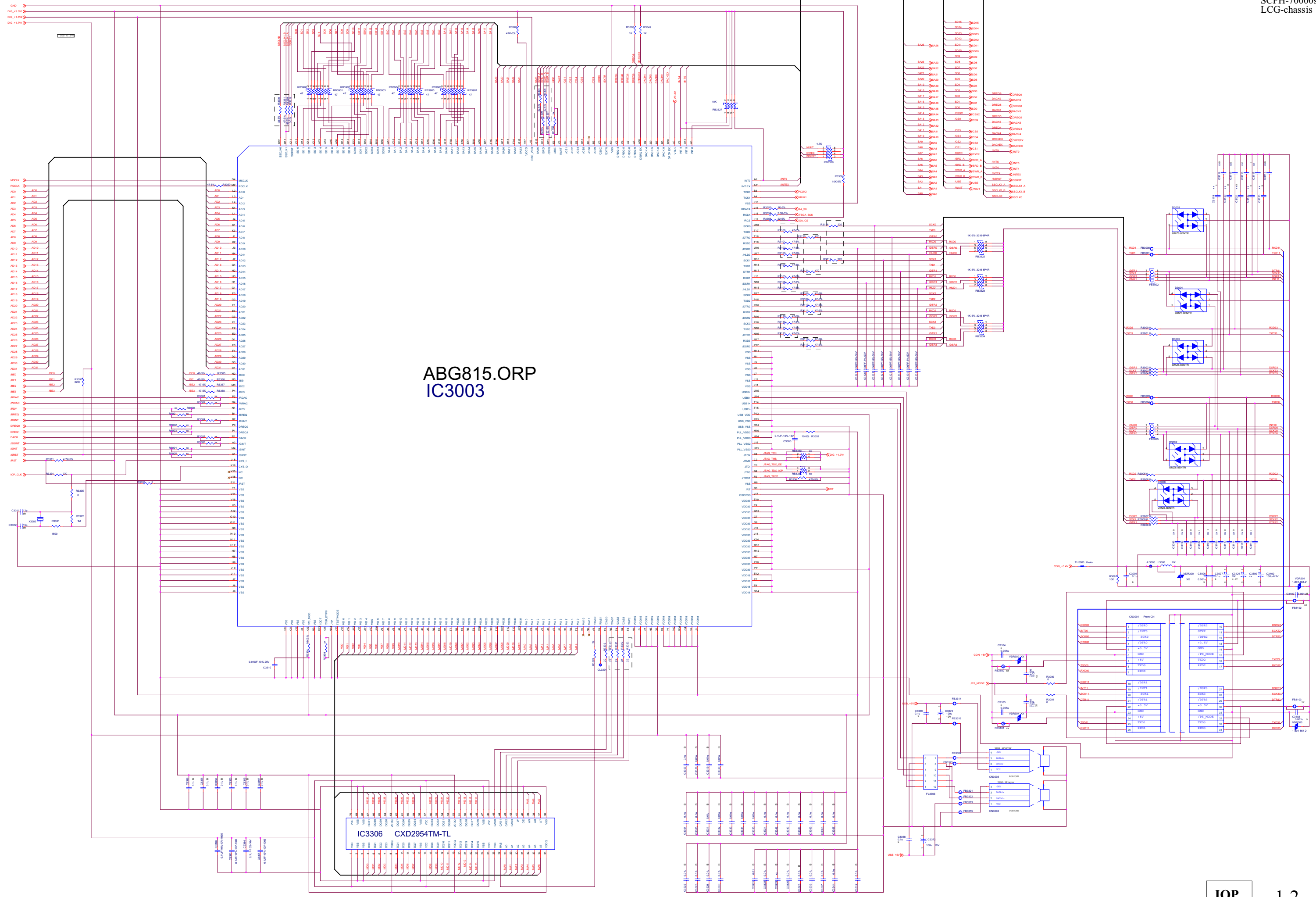
The components identified by mark 
or dotted line with mark  are critical
for safety.

Replace only with part number specified.



IC1003 CXD9797GB

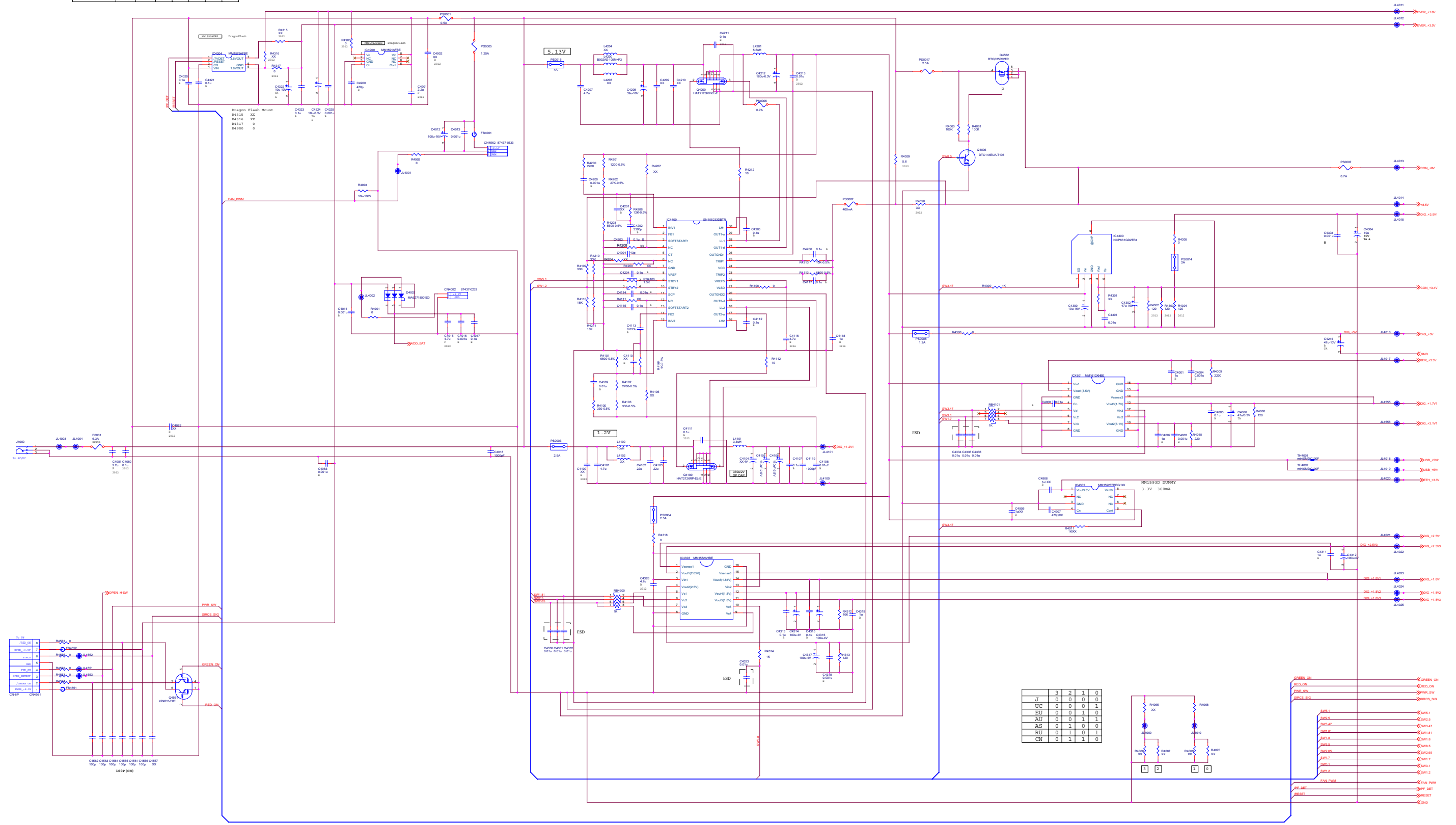
EE+GS



ABG815.0RP
IC3003

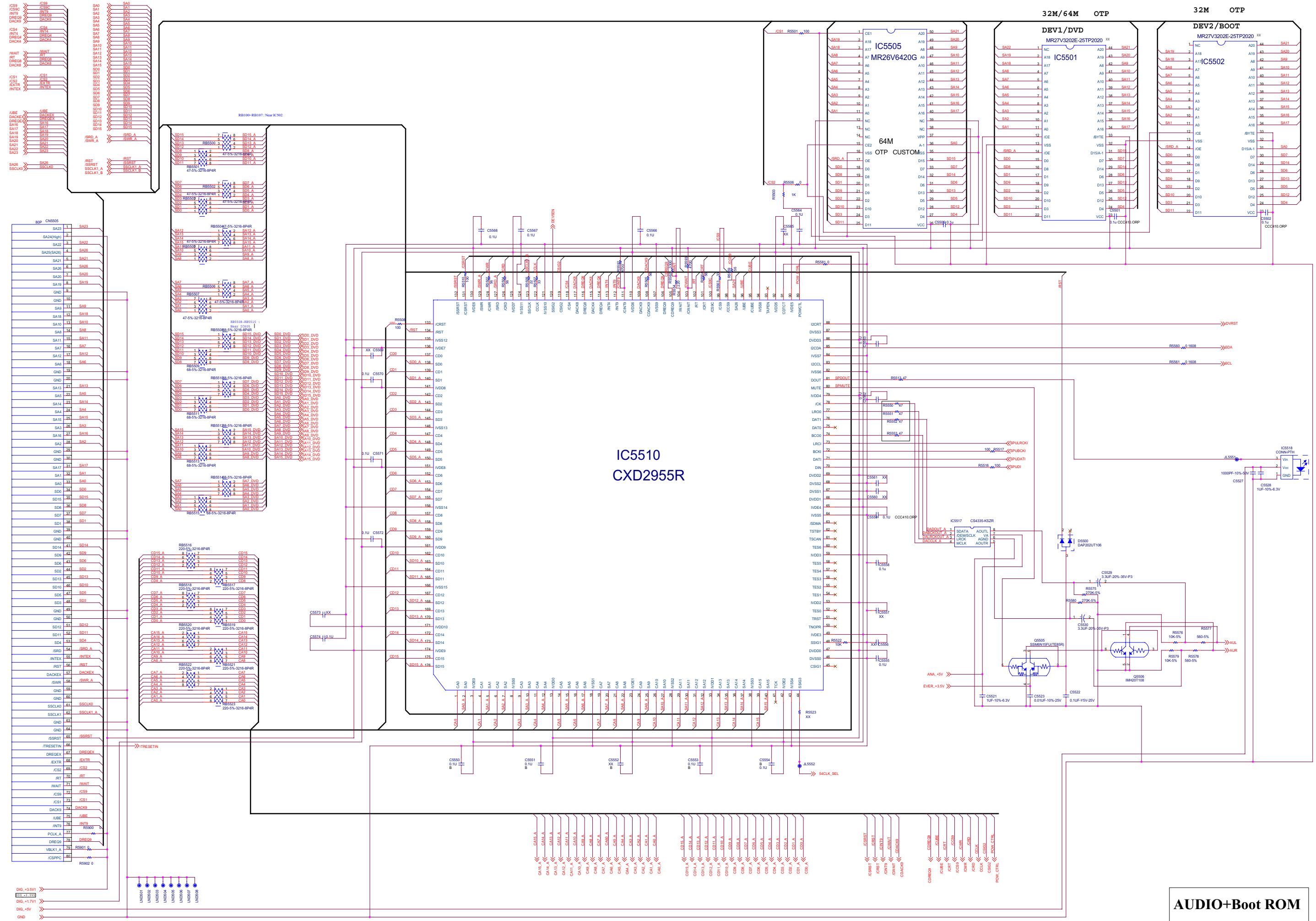
IC3306 CXD2954TM-TL

Dragon (DB30)	041304	044901	R4113	R4114	R4115	R4100	C4200
DBA Flash	R41550	R41551	XX	XX	0	0	0
Mask	R41570	XX	0	0	XX	XX	XX

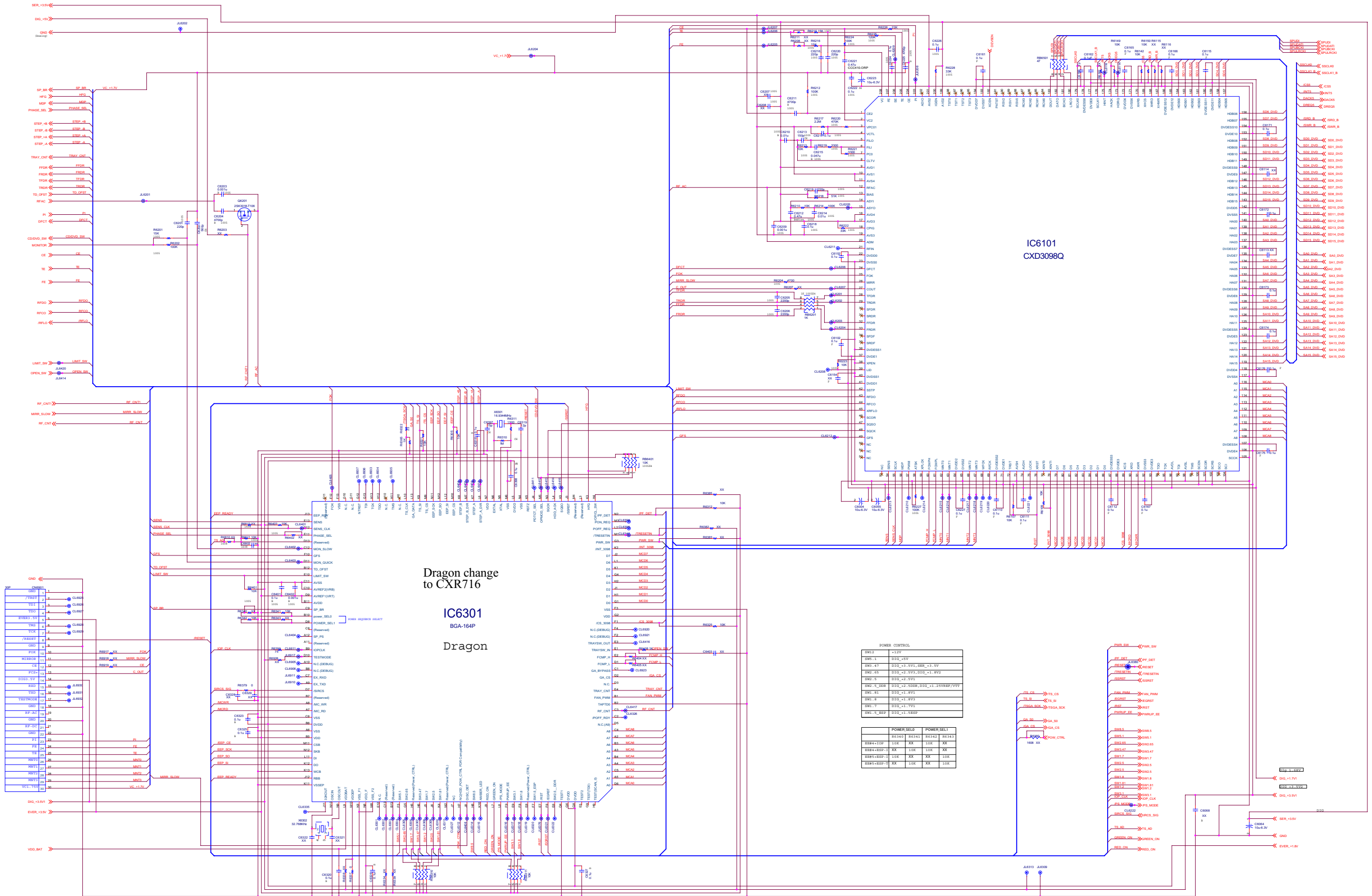


	R4210	R4109	R4211	R4110	R4200	R4100	R4206	R4104	R4212	R4113	R4204	R4108	R4103	R4102	R4101	R4203	R4202	R4201	R4208				
SN105225DBTR	33K	33K	18K	18K	2200	330	12K	1K	10	10	XX	XX	10K	6.8K	XX	0	330	2.7K	6.8K	5.6K	27K	1.2K	XX
MB39A116PFT-ERE1	33K	33K	18K	18K	2200	XX	51K	6.8K	0	0	XX	XX	4.7K	680	0	XX	2K	0	10K	3K	12K	470	0

	C4113	C4202	C4206	C4117	C4200	C4109	C4904
SN105225DBTR	0.033u	3300P	0.1u	0.1u	1000P	0.01u	43P
MB39A116PFT-ERE1	0.022u	2200P	XX	XX	330P	XX	47K



AUDIO+Boot ROM



Dragon change
to CXR716

IC6301
BGA-164P
Dragon

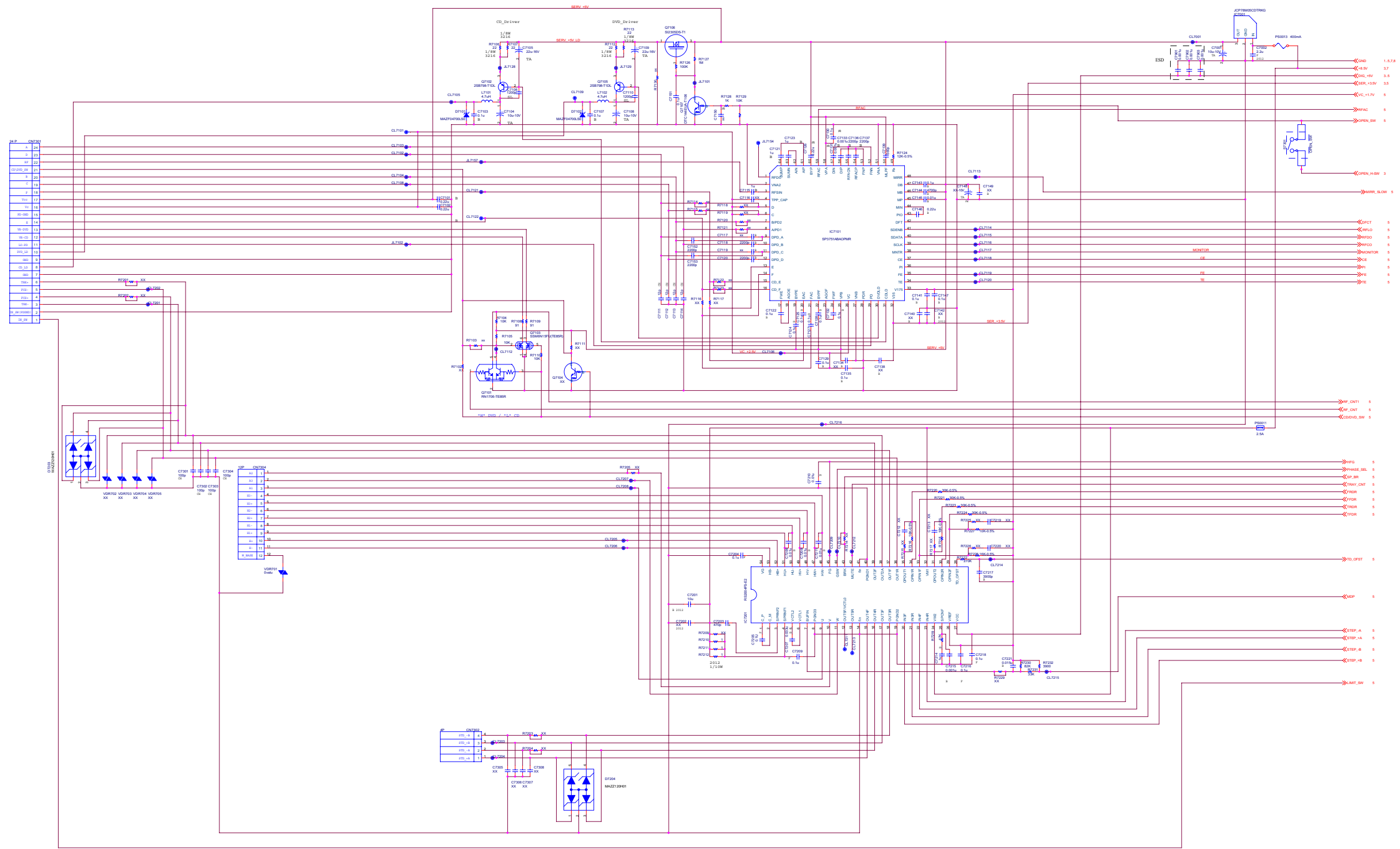
IC6101
CXD3098Q

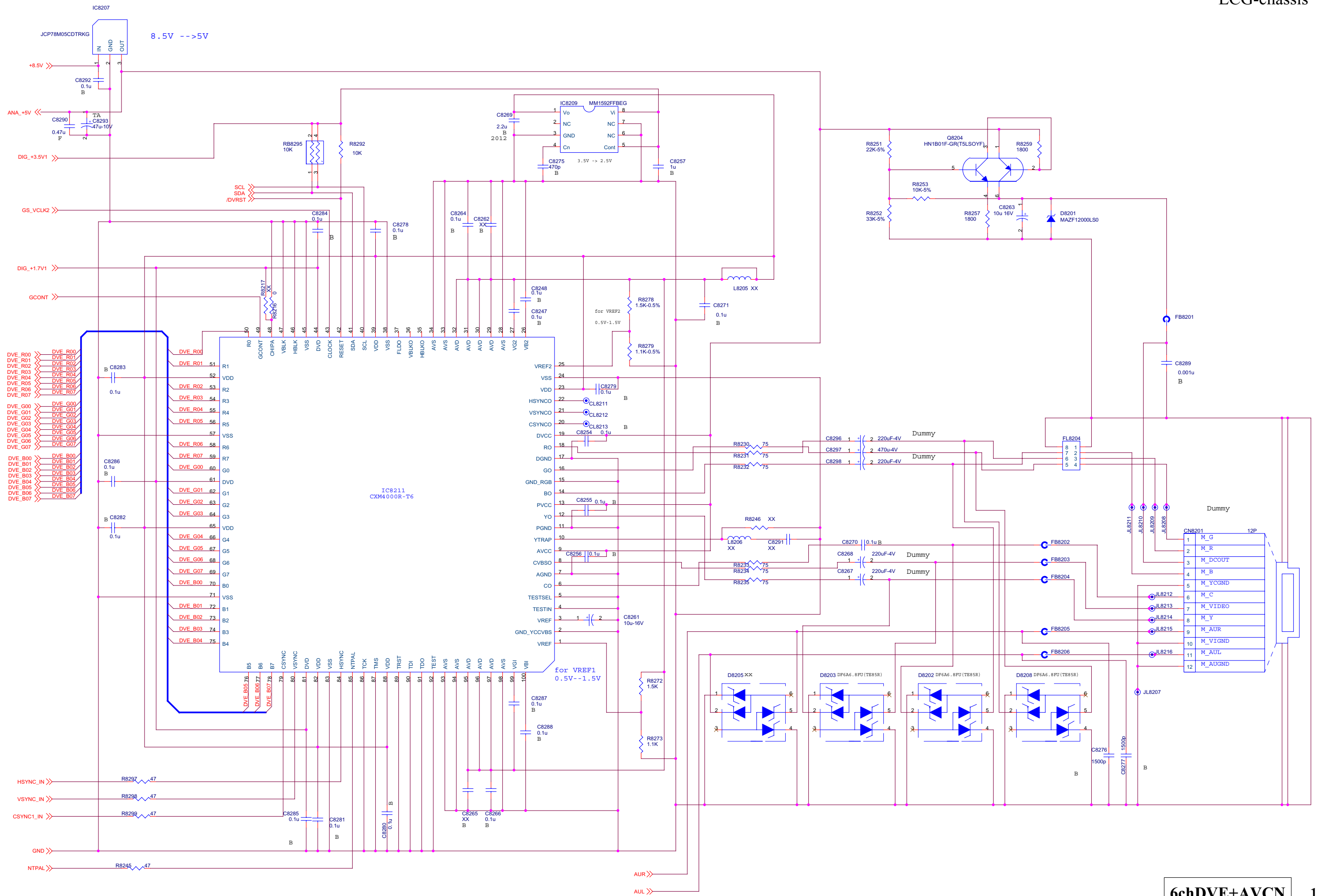
POWER CONTROL

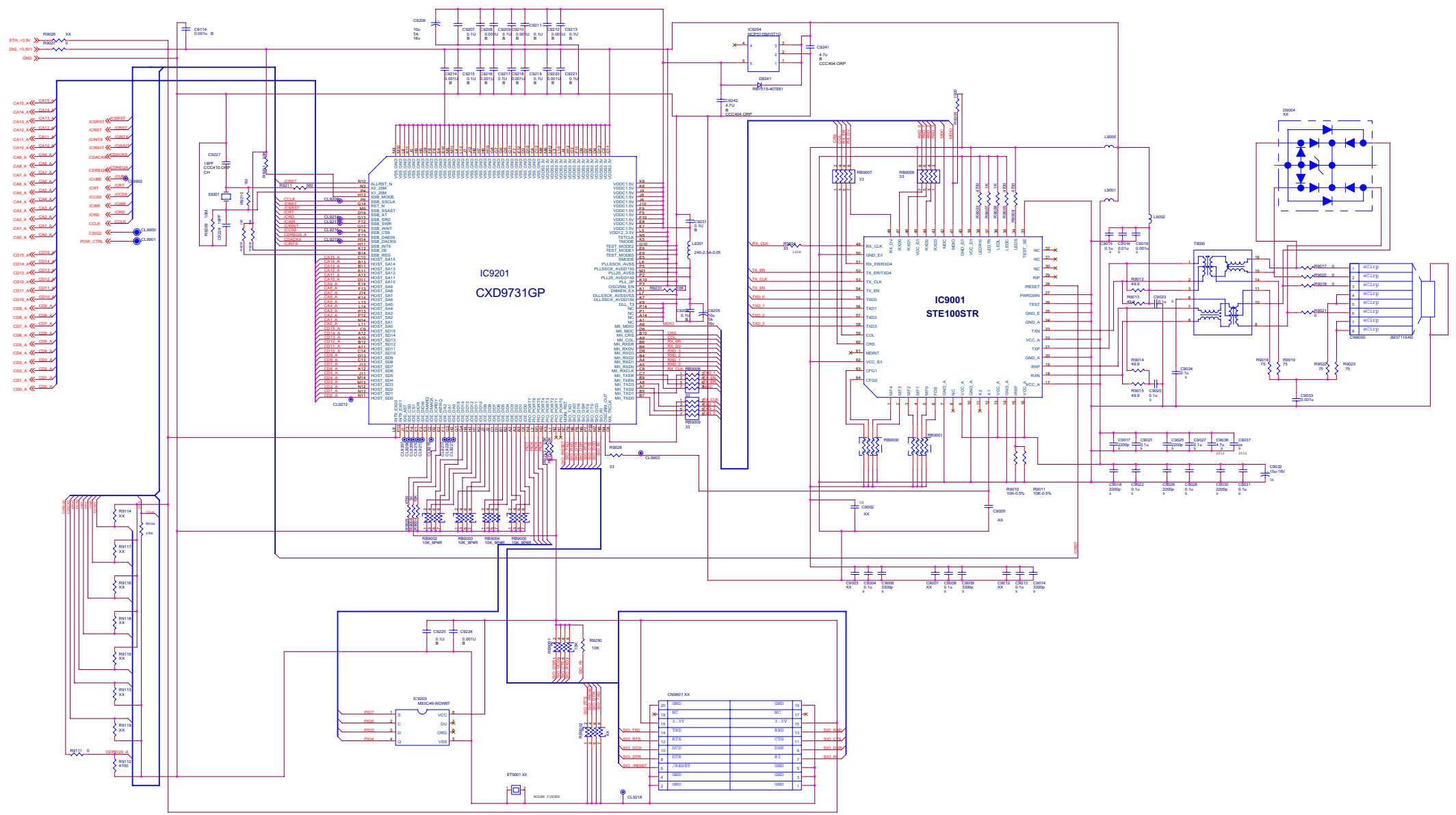
SW2_1	+1.2V
SW2_1	DISG_+5V
SW2_4	DISG_+7V, +7V1, SW2_+1_7V
SW2_5	DISG_+2_5V2, DISG_+1_5V2
SW2_5	DISG_+3_5V3
SW2_5_DDR	DISG_+2_5DDR, DISG_+1_25DDR/VVT
SW2_6	DISG_+1_5V1
SW2_8	DISG_+3_5V3
SW2_9	DISG_+1_7V1
SW2_9_SEP	DISG_+1_5SEP

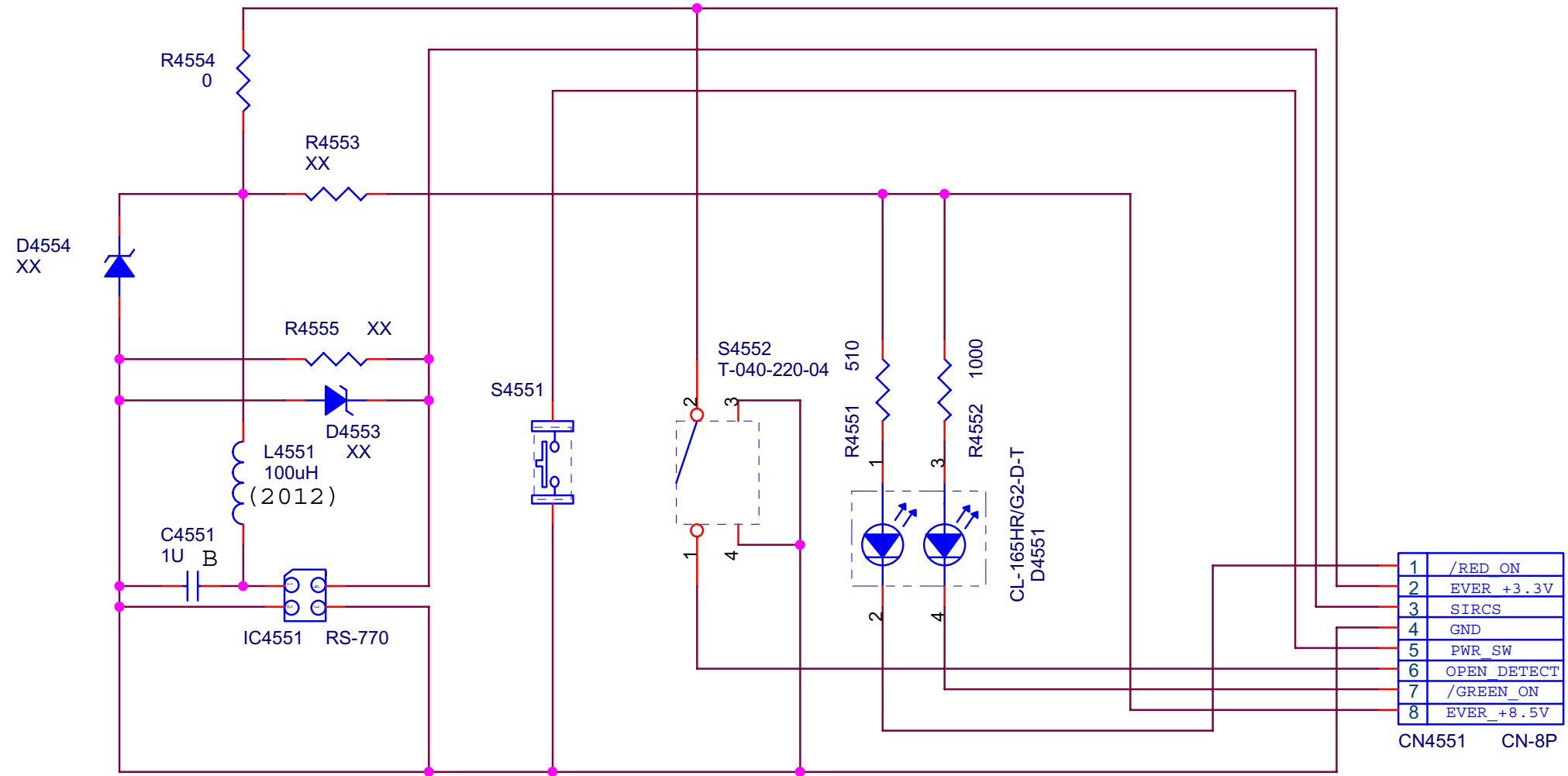
POWERSEL

POWERSEL1	POWERSEL2	POWERSEL3	POWERSEL4
SW2+1-10P	10K	10K	10K
SW2+1-11P	10K	10K	10K
SW2+1-12P	10K	10K	10K
SW2+1-13P	10K	10K	10K
SW2+1-14P	10K	10K	10K
SW2+1-15P	10K	10K	10K
SW2+1-16P	10K	10K	10K
SW2+1-17P	10K	10K	10K
SW2+1-18P	10K	10K	10K
SW2+1-19P	10K	10K	10K
SW2+1-20P	10K	10K	10K



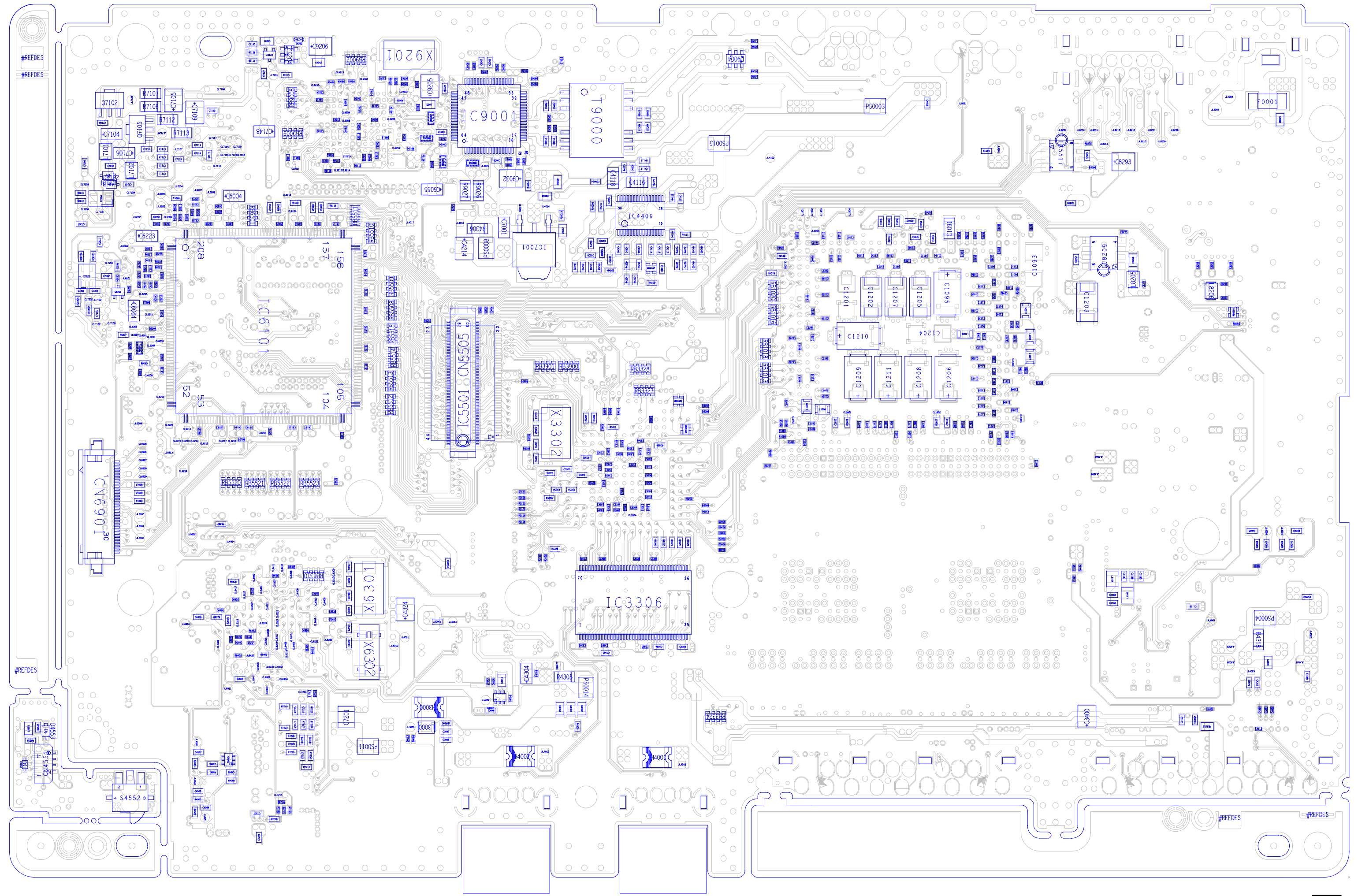




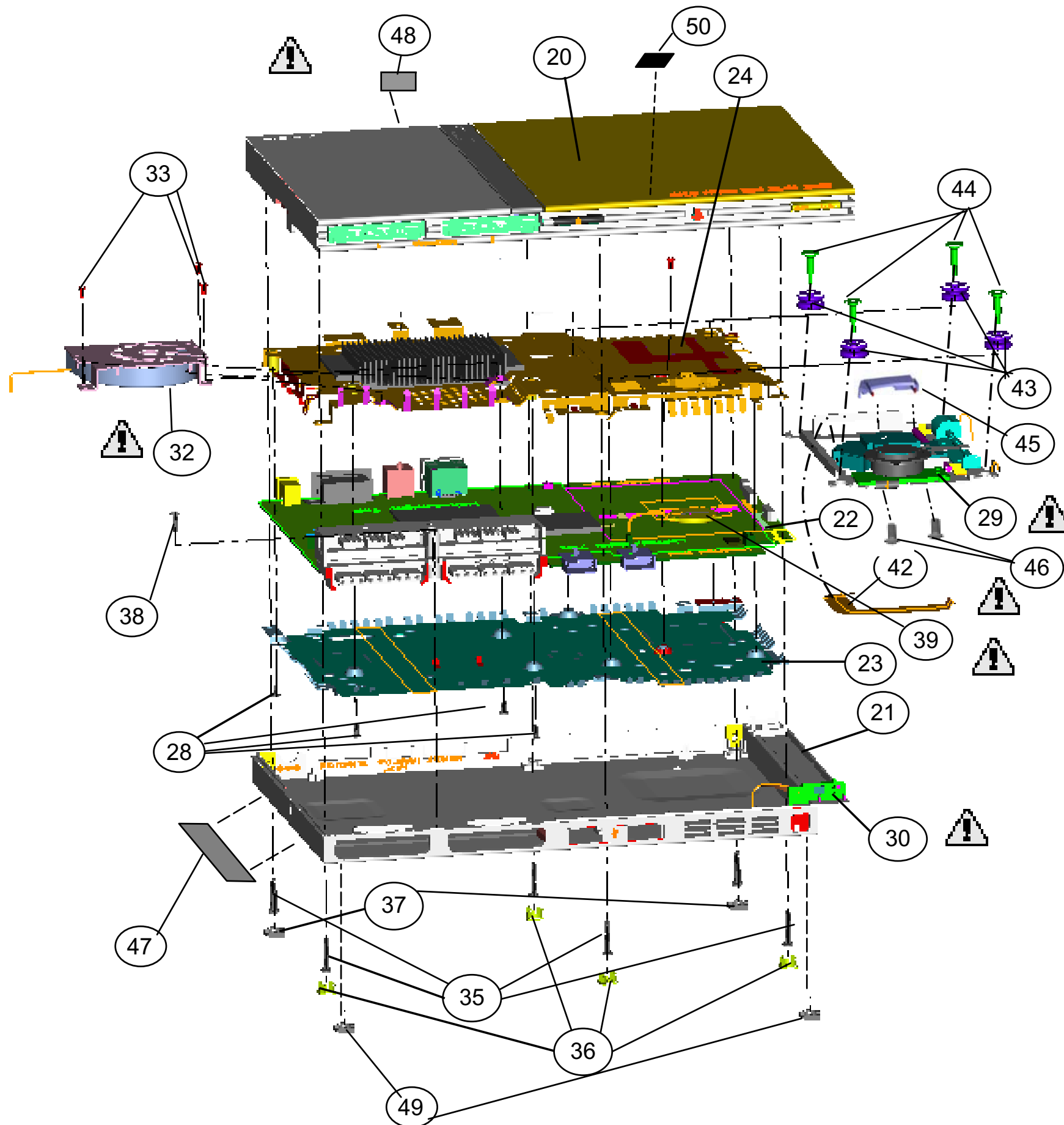


1	/RED_ON
2	EVER +3.3V
3	SIRCS
4	GND
5	PWR_SW
6	OPEN_DETECT
7	/GREEN_ON
8	EVER +8.5V

CN4551 CN-8P



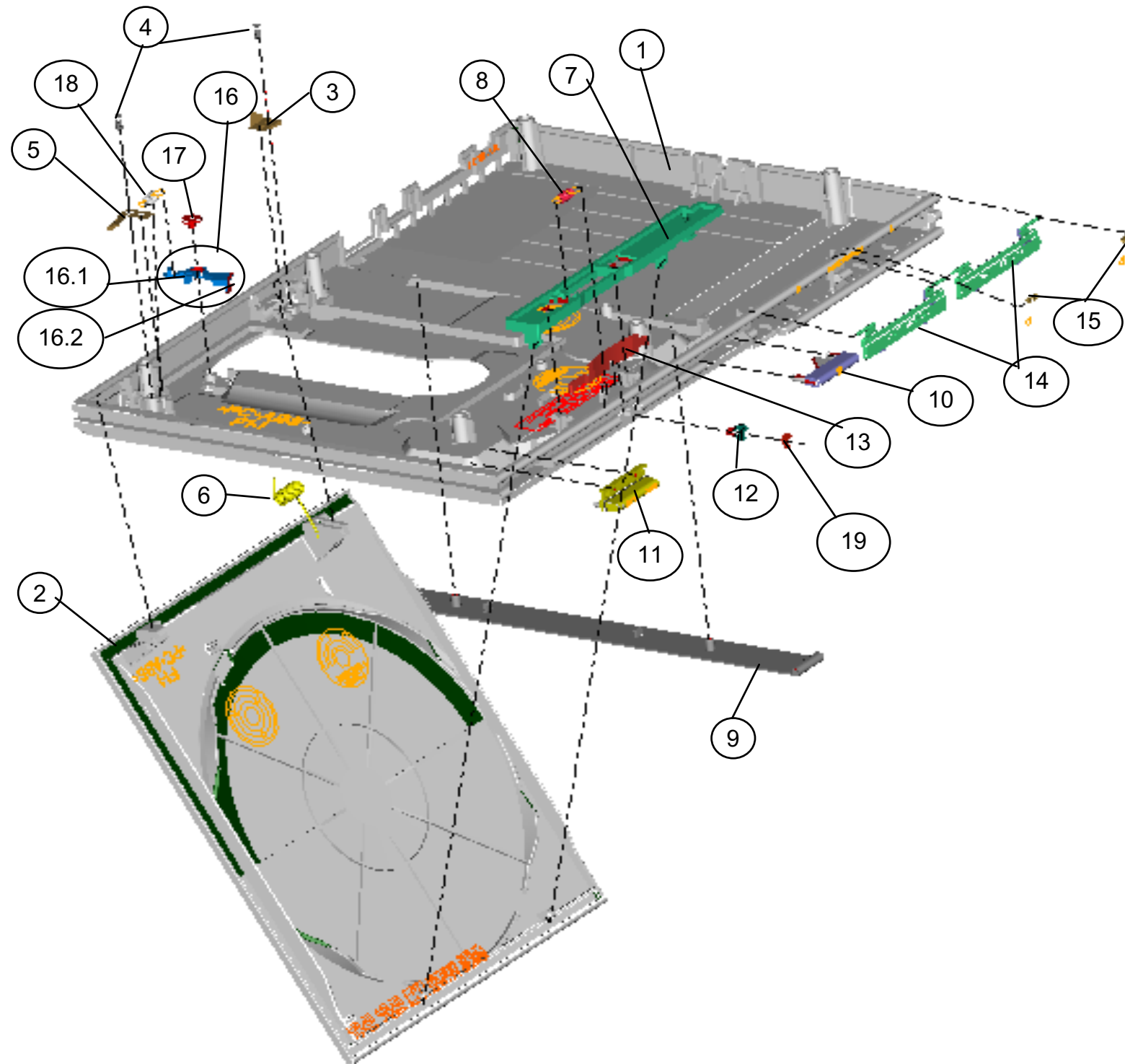
OVERALL AND MAIN BLOCK



OVERALL AND MAIN BLOCK

Ref-No	Customer part NO	Description	SET/PC
20	9-886-100-03	COVER ASSY,UPPER (Sankyo/No modem)	1
21	9-886-100-09	COVER ASSY, LOWER (no modem)	1
22		MAIN BOARD	1
23	9-886-100-10	SHIELD ASSY,LOWER	1
24	9-886-100-12	SHIELD ASSY,UPPER	1
25	2-318-817-01	SHEET (EE), ELECTRIC HEAT	1
26	3-080-294-01	SHEET (DRIVER), ELECTRIC HEAT	1
27	3-088-454-01	SHEET (MULTI), ELECTRIC HEAT	2
28	3-074-552-01	0 PLATE 2 MAIN 2X5 S TITE	4
29	1-788-194-11	TRAVERSE SANKYO	1
	1-788-193-11	TRAVERSE MITSUMI	1
30	9-886-100-15	SW BOARD	1
31	9-886-100-16	8 PIN FFC	1
32	9-886-100-17	DC FAN	1
33	9-886-100-18	SCREW, TAPPING (M2X4)	6
34	3-074-560-01	HARNESS TAPE(FAN)	1
35	9-886-100-19	SCREW , TAPPING(P2.6X12)	6
36	2-187-329-01	COVER , SCREW	4
37	2-187-330-01	CAP(R)	2
38	9-886-100-20	SCREW(FTB)(+BV2.6X8)	1
39	9-886-100-13	BATTERY UNIT ASSY	1
42	1-864-648-11	OPU FPC	1
	1-864-648-21	OPU FPC	1
43	2-187-328-01	INSULATOR	4
44	9-886-100-14	SCREW(TR,2X4.5 S)	4
45	2-348-243-01	DISC GUARD FOR SANKYO	1
	2-348-242-01	DISC GUARD FOR MITSUMI	1
46	9-886-100-42	SCREW for SANKYO D-guard	2
	9-886-100-42	SCREW for MITSUMI D-guard	1
47	2-342-708-01	LABEL, MODEL NUMBER	1
48	2-345-222-01	TAPE (D), VOID	1
49	2-187-325-01	CAP(F)	2
50	2-579-638-01	PUSH LABEL	1

COVER UPPER ASSY AND STAND NUT BLOCK

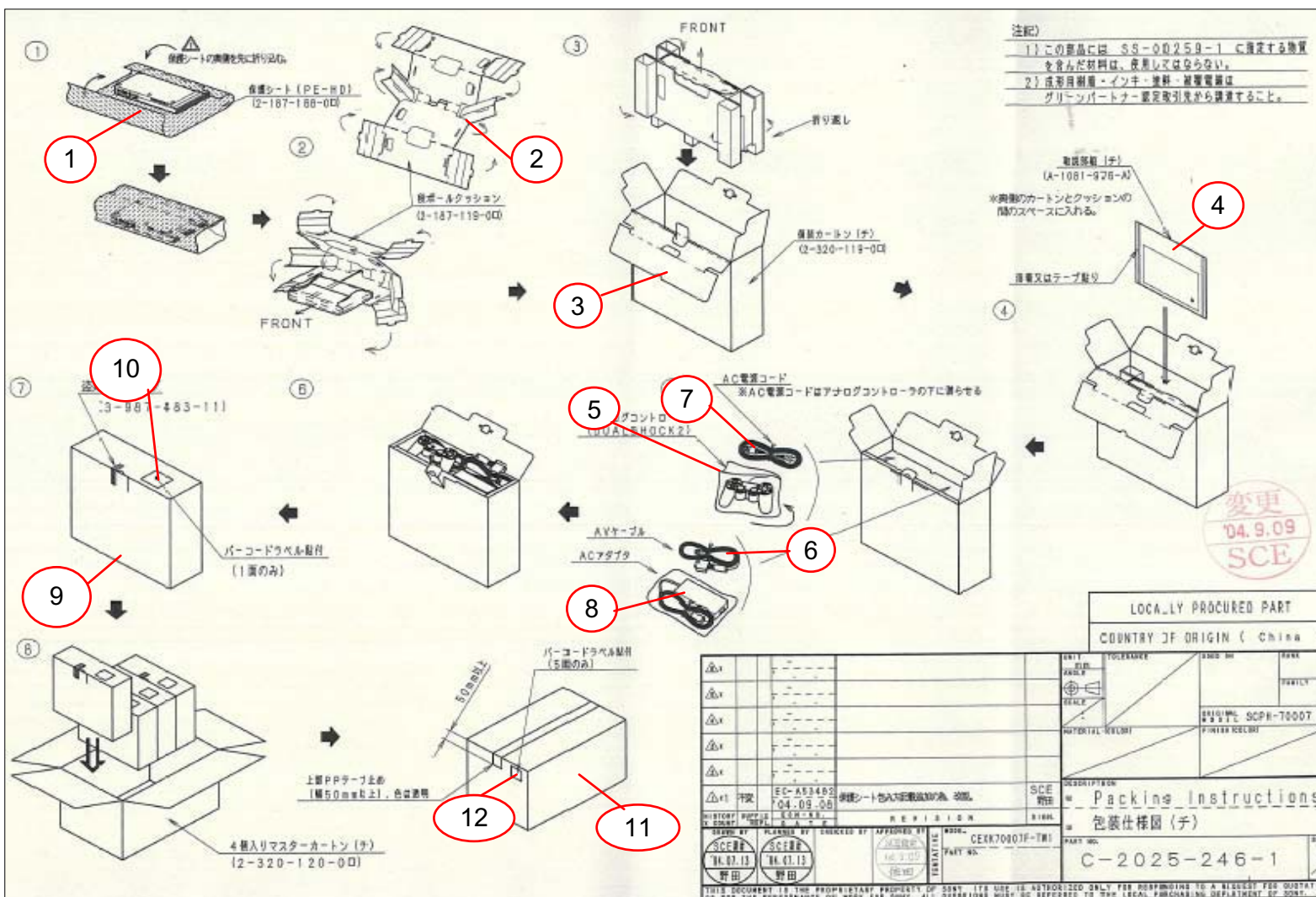


COVER UPPER ASSY AND STAND NUT BLOCK

Ref-NO	Customer part NO	Description	SET/PC
1		COVER UPPER	1
2		LID	1
3		LID_Spring(L)	1
4	9-886-100-42	SCREW(+P2X4 B)	2
5		LID-Spring(R)	1
6	9-886-100-04	SPRING ,LID	1
7		SLIDE,LOCK	1
8	9-886-100-04	SPRING ,SLIDE	1
9		ORNAMENTAL PLATE	1
10		OPEN BUTTON	1
11		POWER BUTTON	1
12		SHAFT,ROTARY	1
13		Rotate_Shaft_Spring	1
14		SHUTTER	2
15		SPRING ,TORSION FOR SHUTTER	2
16	9-886-100-05	BRAKE ASSY	1
16.1		LEVER BRAKE	1
16.2		CUSHION BRAKE	1
17	9-886-100-06	BRAKE SCREW(B2*2.7)	1
18	9-886-100-07	SPRING,BRAKE	1
19		PS MARK	1

TOOLS : The head form of SCREW DRIVER must match screw.
 The torsional damper moment is 2.0 ± 0.2 kgf.cm for SCREW DRIVER.

PACKING GROUP



Ref-NO	Customer part NO	Description	SET/PC
1	2-187-168-01	SHEET, PROTECTION	1
2	2-187-119-01	CUSHION , FIBERBOARD	1
3	2-320-119-01	INDIVIDUAL, CARTON	1
4	A-1081-976-A	MANUAL BLOCK ASSY	1
4-1	2-187-121-01	BAG, POLYETHYLENE	1
4-2	2-187-122-71	MANUAL, INSTRUCTION	1
4-3	2-320-109-11	INSTRUCTION (ACC)	1
4-4	2-349-598-11	INSTRUCTION (GYRO)	1
4-5	2-549-560-11	INSTRUCTION (ATTENTION)	1
5	1-829-867-11	CONTROLLER	1
	1-829-856-11	CONTROLLER	1
6	1-792-028-23	CORD, CONNECTION	1
	1-792-028-32	CORD, CONNECTION	1
	1-792-028-53	CORD, CONNECTION	1
	1-792-028-63	CORD, CONNECTION	1
	1-792-028-81	CORD, CONNECTION	1
7	1-824-506-31	CORD, POWER	1
	1-829-808-21	CORD, POWER	1
	1-829-809-21	CORD, POWER	1
	1-829-810-21	CORD, POWER	1
8	1-479-009-11	ADAPTOR, AC	1
9	3-987-483-11	TAPE,BERODDED PREVENTION	1
10		LABEL (D), BAR CODE, SONY	1
11	2-320-120-01	MASTER CARTON, 4 SETS	0.25
12		LABEL (D), BAR CODE, SONY	0.25

SECTION4 ELECTRICAL PART LIST

NOTE:

- Due to standardization , replacements in the parts list may be different form the parts specified in the diagrams or the components used on the set.
- RESISTORS
METAL :Metal-film resistor.
F: nonflammable
- SEMICONDUCTORS
In each case , u: μ ,for example:
uA.: μ A.. uPA.: μ PA..
uPB.: μ PB.. uPC.: μ PC.. uPD.: μ PD..



- CAPACITORS
uF: μ F
- COILS
uH: μ H

When indicating parts by reference number, please include the board.

NOTE:

- SC Classification
S: Supplied parts
U: Unsupplied parts

Note:

The components identified by mark 
or dotted line with mark  are critical
for safety.

Replace only with part number specified.

REPRODUCTION PROHIBITED

SCPH-70007CB

K-chassis

SC	REF	P/N	DESCRIPTION	SC	REF	P/N	DESCRIPTION	SC	REF	P/N	DESCRIPTION
U	C1692	1-125-777-81	CAP,SMD,CER 0.1MF 10% 10V 1005 X7R	U	C3373	1-165-492-21	CAP,SMD,ALU 100MF 20% 10V 5	U	C4213	1-163-021-91	CAP,SMD,CER 0.01MF 10% 50V 2012 X7R
U	C1693	1-125-777-81	CAP,SMD,CER 0.1MF 10% 10V 1005 X7R	U	C3393	1-125-777-81	CAP,SMD,CER 0.1MF 10% 10V 1005 X7R	U	C4214	1-137-934-91	CAP,SMD,TAN 47MF 20% 10V B CASE
U	C1694	1-125-777-81	CAP,SMD,CER 0.1MF 10% 10V 1005 X7R	U	C3394	1-107-826-91	CAP,SMD,CER 0.1MF 10% 16V 1608 X7R	U	C4300	1-124-779-21	CAP,SMD,ALU 10MF 20% 16V 4
U	C1695	1-125-777-81	CAP,SMD,CER 0.1MF 10% 10V 1005 X7R	U	C3395	1-125-777-81	CAP,SMD,CER 0.1MF 10% 10V 1005 X7R	U	C4301	1-162-970-91	CAP,SMD,CER 0.01MF 10% 25V 1608 X7R
U	C1696	1-125-777-81	CAP,SMD,CER 0.1MF 10% 10V 1005 X7R	U	C3396	1-125-777-81	CAP,SMD,CER 0.1MF 10% 10V 1005 X7R	U	C4302	1-137-765-21	CAP,SMD,ALU 47MF 20% 16V 5,
U	C1697	1-125-777-81	CAP,SMD,CER 0.1MF 10% 10V 1005 X7R	U	C3397	1-125-777-81	CAP,SMD,CER 0.1MF 10% 10V 1005 X7R	U	C4303	1-164-937-81	CAP,SMD,CER 1000PF 10% 50V 1005 X7R
U	C1769	1-125-777-81	CAP,SMD,CER 0.1MF 10% 10V 1005 X7R	U	C3398	1-125-777-81	CAP,SMD,CER 0.1MF 10% 10V 1005 X7R	U	C4304	1-104-851-91	CAP,SMD,TAN 10MF 20% 10V A CASE
U	C3091	1-125-777-81	CAP,SMD,CER 0.1MF 10% 10V 1005 X7R	U	C3400	1-128-964-91	CAP,SMD,TAN 100MF 20%,6.3V B CASE	U	C4311	1-125-837-91	CAP,SMD,CER 1MF 10% 6.3V 1608 X7R
U	C3096	1-162-964-91	CAP,SMD,CER 1000PF 10% 50V 1608 X7R	U	C4000	1-162-970-91	CAP,SMD,CER 0.01MF 10% 25V 1608 X7R	U	C4312	9-886-100-33	CAP,SMD,ALU 100MF 20% 4V 4
U	C3097	1-107-826-91	CAP,SMD,CER 0.1MF 10% 16V 1608 X7R	U	C4001	1-125-837-91	CAP,SMD,CER 1MF 10% 6.3V 1608 X7R	U	C4313	1-125-777-81	CAP,SMD,CER 0.1MF 10% 10V 1005 X7R
U	C3100	1-162-927-91	CAP,SMD,CER 100PF 5% 50V 1608 NPO	U	C4002	1-125-837-91	CAP,SMD,CER 1MF 10% 6.3V 1608 X7R	U	C4314	9-886-100-33	CAP,SMD,ALU 100MF 20% 4V 4
U	C3101	1-162-927-91	CAP,SMD,CER 100PF 5% 50V 1608 NPO	U	C4003	1-162-964-91	CAP,SMD,CER 1000PF 10% 50V 1608 X7R	U	C4315	1-125-777-81	CAP,SMD,CER 0.1MF 10% 10V 1005 X7R
U	C3102	1-162-964-91	CAP,SMD,CER 1000PF 10% 50V 1608 X7R	U	C4004	1-162-964-91	CAP,SMD,CER 1000PF 10% 50V 1608 X7R	U	C4316	9-886-100-33	CAP,SMD,ALU 100MF 20% 4V 4
U	C3103	1-162-964-91	CAP,SMD,CER 1000PF 10% 50V 1608 X7R	U	C4005	1-107-826-91	CAP,SMD,CER 0.1MF 10% 16V 1608 X7R	U	C4317	9-886-100-33	CAP,SMD,ALU 100MF 20% 4V 4
U	C3104	1-162-964-91	CAP,SMD,CER 1000PF 10% 50V 1608 X7R	U	C4006	1-110-569-91	CAP,SMD,TAN 47MF 20% 6.3V B CASE	U	C4318	1-164-937-81	CAP,SMD,CER 1000PF 10% 50V 1005 X7R
U	C3105	1-162-964-91	CAP,SMD,CER 1000PF 10% 50V 1608 X7R	U	C4012	1-117-681-21	CAP,SMD,ALU 100MF 20% 16V 6.3	U	C4319	1-125-837-91	CAP,SMD,CER 1MF 10% 6.3V 1608 X7R
U	C3125	1-164-874-81	CAP,SMD,CER 100PF 5% 50V 1005 NPO	U	C4013	1-162-964-91	CAP,SMD,CER 1000PF 10% 50V 1608 X7R	U	C4320	1-107-826-91	CAP,SMD,CER 0.1MF 10% 16V 1608 X7R
U	C3126	1-164-874-81	CAP,SMD,CER 100PF 5% 50V 1005 NPO	U	C4014	1-164-937-81	CAP,SMD,CER 1000PF 10% 50V 1005 X7R	U	C4321	1-107-826-91	CAP,SMD,CER 0.1MF 10% 16V 1608 X7R
U	C3127	1-164-874-81	CAP,SMD,CER 100PF 5% 50V 1005 NPO	U	C4015	1-117-720-91	CAP,SMD,CER 4.7MF +80/-20% 10V 2012 Y5V	U	C4322	1-104-851-91	CAP,SMD,TAN 10MF 20% 10V A CASE
U	C3128	1-164-874-81	CAP,SMD,CER 100PF 5% 50V 1005 NPO	U	C4016	1-164-937-81	CAP,SMD,CER 1000PF 10% 50V 1005 X7R	U	C4323	1-107-826-91	CAP,SMD,CER 0.1MF 10% 16V 1608 X7R
U	C3129	1-164-874-81	CAP,SMD,CER 100PF 5% 50V 1005 NPO	U	C4017	1-125-777-81	CAP,SMD,CER 0.1MF 10% 10V 1005 X7R	U	C4324	1-104-913-91	CAP,SMD,TAN 10MF 20% 16V B CASE
U	C3130	1-164-874-81	CAP,SMD,CER 100PF 5% 50V 1005 NPO	U	C4018	1-162-964-91	CAP,SMD,CER 1000PF 10% 50V 1608 X7R	U	C4325	1-162-964-91	CAP,SMD,CER 1000PF 10% 50V 1608 X7R
U	C3131	1-164-874-81	CAP,SMD,CER 100PF 5% 50V 1005 NPO	U	C4080	1-107-725-91	CAP,SMD,CER 0.1MF 10% 16V 2012 X7R	U	C4326	1-127-760-91	CAP,SMD,CER 4.7MF 10% 6.3V 2012 X7R
U	C3132	1-164-874-81	CAP,SMD,CER 100PF 5% 50V 1005 NPO	U	C4081	1-164-505-91	CAP,SMD,CER 2.2 MF+80/-20% 16V 2012 Y5V	U	C4330	1-164-943-81	CAP,SMD,CER 10000PF 10% 16V 1005 X7R
U	C3301	1-125-777-81	CAP,SMD,CER 0.1MF 10% 10V 1005 X7R	U	C4083	1-164-937-81	CAP,SMD,CER 1000PF 10% 50V 1005 X7R	U	C4331	1-164-943-81	CAP,SMD,CER 10000PF 10% 16V 1005 X7R
U	C3305	1-125-777-81	CAP,SMD,CER 0.1MF 10% 10V 1005 X7R	U	C4101	1-127-820-91	CAP,SMD,CER 4.7MF 10% 16V 3216 X7R	U	C4332	1-164-943-81	CAP,SMD,CER 10000PF 10% 16V 1005 X7R
U	C3307	1-125-777-81	CAP,SMD,CER 0.1MF 10% 10V 1005 X7R	U	C4102	1-100-055-11	CAP,SMD,CER 22MF 20% 16V 3225 X7R	U	C4333	1-164-943-81	CAP,SMD,CER 10000PF 10% 16V 1005 X7R
U	C3310	1-164-943-81	CAP,SMD,CER 10000PF 10% 16V 1005 X7R	U	C4103	1-100-055-11	CAP,SMD,CER 22MF 20% 16V 3225 X7R	U	C4334	1-164-943-81	CAP,SMD,CER 10000PF 10% 16V 1005 X7R
U	C3311	1-162-916-91	CAP,SMD,CER 12PF 5% 50V 1608 NPO	U	C4104	9-886-100-43	CAP,SMD,SP-ALU 330MF 20% 2V D CASE	U	C4335	1-164-943-81	CAP,SMD,CER 10000PF 10% 16V 1005 X7R
U	C3312	1-162-917-91	CAP,SMD,CER 15PF 5% 50V 1608 NPO				(FJT C4104 TXI C4104)	U	C4336	1-164-943-81	CAP,SMD,CER 10000PF 10% 16V 1005 X7R
U	C3317	1-164-943-81	CAP,SMD,CER 10000PF 10% 16V 1005 X7R	U	C4105	1-100-392-21	CAP,SMD,ALU 180MF 20% 2.5V 5	U	C4561	1-162-927-91	CAP,SMD,CER 100PF 5% 50V 1608 NPO
U	C3318	1-164-943-81	CAP,SMD,CER 10000PF 10% 16V 1005 X7R				(FJT C4105/C4106 TXI C4105/C4106)	U	C4562	1-162-927-91	CAP,SMD,CER 100PF 5% 50V 1608 NPO
U	C3319	1-164-943-81	CAP,SMD,CER 10000PF 10% 16V 1005 X7R	U	C4106	1-100-392-21	CAP,SMD,ALU 180MF 20% 2.5V 5	U	C4563	1-162-927-91	CAP,SMD,CER 100PF 5% 50V 1608 NPO
U	C3320	1-164-943-81	CAP,SMD,CER 10000PF 10% 16V 1005 X7R				(FJT C4105/C4106 TXI C4105/C4106)	U	C4564	1-162-927-91	CAP,SMD,CER 100PF 5% 50V 1608 NPO
U	C3321	1-164-943-81	CAP,SMD,CER 10000PF 10% 16V 1005 X7R	U	C4107	1-107-826-91	CAP,SMD,CER 0.1MF 10% 16V 1608 X7R	U	C4565	1-162-927-91	CAP,SMD,CER 100PF 5% 50V 1608 NPO
U	C3322	1-164-943-81	CAP,SMD,CER 10000PF 10% 16V 1005 X7R	U	C4108	1-162-970-91	CAP,SMD,CER 0.01MF 10% 25V 1608 X7R	U	C4566	1-162-927-91	CAP,SMD,CER 100PF 5% 50V 1608 NPO
U	C3324	1-125-777-81	CAP,SMD,CER 0.1MF 10% 10V 1005 X7R	U	C4111	1-107-725-91	CAP,SMD,CER 0.1MF 10% 16V 2012 X7R	U	C4901	1-164-505-91	CAP,SMD,CER 2.2 MF+80/-20% 16V 2012 Y5V
U	C3325	1-164-943-81	CAP,SMD,CER 10000PF 10% 16V 1005 X7R	U	C4112	1-107-826-91	CAP,SMD,CER 0.1MF 10% 16V 1608 X7R	U	C4904	1-218-887-91	RES,SMD,47K 0.5% 1/10W 1608
U	C3326	1-164-943-81	CAP,SMD,CER 10000PF 10% 16V 1005 X7R	U	C4113	1-164-227-91	CAP,SMD,CER 22000PF 10% 25V 1608 X7R	U	C4904	1-218-887-91	RES,SMD,47K 0.5% 1/10W 1608
U	C3327	1-164-943-81	CAP,SMD,CER 10000PF 10% 16V 1005 X7R				(FJT C4105/C4106 FJT C4104)				(FJT C4105/C4106 FJT C4104)
U	C3328	1-164-943-81	CAP,SMD,CER 10000PF 10% 16V 1005 X7R				(TXI C4105/C4106 TXI C4104)	U	C4904	1-164-379-91	RES,SMD,47K 0.5% 1/10W 1608
U	C3329	1-164-943-81	CAP,SMD,CER 10000PF 10% 16V 1005 X7R	U	C4113	1-164-677-91	CAP,SMD,CER 22000PF 10% 25V 1608 X7R				(TXI C4105/C4106 TXI C4104)
U	C3330	1-164-943-81	CAP,SMD,CER 10000PF 10% 16V 1005 X7R				(TXI C4105/C4106 TXI C4104)	U	C5505	1-125-777-81	CAP,SMD,CER 0.1MF 10% 10V 1005 X7R
U	C3331	1-164-943-81	CAP,SMD,CER 10000PF 10% 16V 1005 X7R	U	C4114	1-162-970-91	CAP,SMD,CER 0.01MF 10% 25V 1608 X7R	U	C5521	1-125-837-91	CAP,SMD,CER 1MF 10% 6.3V 1608 X7R
U	C3332	1-164-943-81	CAP,SMD,CER 10000PF 10% 16V 1005 X7R	U	C4115	1-107-826-91	CAP,SMD,CER 0.1MF 10% 16V 1608 X7R	U	C5522	1-107-820-81	CAP,SMD,CER 0.1MF +80/-20% 16V 1005 Y5V
U	C3333	1-164-943-81	CAP,SMD,CER 10000PF 10% 16V 1005 X7R	U	C4116	1-115-566-91	CAP,SMD,CER 4.7MF 10% 10V 3216 X7R	U	C5523	1-164-943-81	CAP,SMD,CER 10000PF 10% 16V 1005 X7R
U	C3334	1-164-943-81	CAP,SMD,CER 10000PF 10% 16V 1005 X7R	U	C4118	1-107-682-91	CAP,SMD,CER 1MF 10% 16V 3216 X7R	U	C5527	1-164-937-81	CAP,SMD,CER 1000PF 10% 50V 1005 X7R
U	C3335	1-164-943-81	CAP,SMD,CER 10000PF 10% 16V 1005 X7R	U	C4119	1-162-964-91	CAP,SMD,CER 1000PF 10% 50V 1608 X7R	U	C5528	1-125-837-91	CAP,SMD,CER 1MF 10% 6.3V 1608 X7R
U	C3336	1-164-943-81	CAP,SMD,CER 10000PF 10% 16V 1005 X7R	U	C4200	1-162-961-91	CAP,SMD,CER 330PF 10% 50V 1608 X7R	U	C5529	1-128-008-21	CAP,SMD,ALU 3.3MF 20% 35V 3
U	C3337	1-164-943-81	CAP,SMD,CER 10000PF 10% 16V 1005 X7R	U	C4200	1-162-961-91	CAP,SMD,CER 330PF 10% 50V 1608 X7R	U	C5530	1-128-008-21	CAP,SMD,ALU 3.3MF 20% 35V 3
U	C3338	1-125-777-81	CAP,SMD,CER 0.1MF 10% 10V 1005 X7R				(FJT C4105/C4106 FJT C4104)	U	C5550	1-125-777-81	CAP,SMD,CER 0.1MF 10% 10V 1005 X7R
U	C3342	1-125-777-81	CAP,SMD,CER 0.1MF 10% 10V 1005 X7R	U	C4200	1-162-964-91	CAP,SMD,CER 330PF 10% 50V 1608 X7R	U	C5551	1-125-777-81	CAP,SMD,CER 0.1MF 10% 10V 1005 X7R
U	C3343	1-125-777-81	CAP,SMD,CER 0.1MF 10% 10V 1005 X7R				(TXI C4105/C4106 TXI C4104)	U	C5553	1-125-777-81	CAP,SMD,CER 0.1MF 10% 10V 1005 X7R
U	C3344	1-125-777-81	CAP,SMD,CER 0.1MF 10% 10V 1005 X7R	U	C4202	1-162-966-91	CAP,SMD,CER 2200PF 10% 50V 1608 X7R	U	C5554	1-125-777-81	CAP,SMD,CER 0.1MF 10% 10V 1005 X7R
U	C3345	1-107-826-91	CAP,SMD,CER 0.1MF 10% 16V 1608 X7R	U	C4202	1-162-966-91	CAP,SMD,CER 2200PF 10% 50V 1608 X7R	U	C5555	1-125-777-81	CAP,SMD,CER 0.1MF 10% 10V 1005 X7R
U	C3355	1-125-777-81	CAP,SMD,CER 0.1MF 10% 10V 1005 X7R				(FJT C4105/C4106 FJT C4104)	U	C5558	1-125-777-81	CAP,SMD,CER 0.1MF 10% 10V 1005 X7R
U	C3356	1-107-826-91	CAP,SMD,CER 0.1MF 10% 16V 1608 X7R	U	C4202	1-162-967-91	CAP,SMD,CER 2200PF 10% 50V 1608 X7R	U	C5559	1-125-777-81	CAP,SMD,CER 0.1MF 10% 10V 1005 X7R
U	C3363	1-107-826-91	CAP,SMD,CER 0.1MF 10% 16V 1608 X7R				(TXI C4105/C4106 TXI C4104)	U	C5562	1-107-826-91	CAP,SMD,CER 0.1MF 10% 16V 1608 X7R
U	C3364	1-125-777-81	CAP,SMD,CER 0.1MF 10% 10V 1005 X7R	U	C4203	1-107-826-91	CAP,SMD,CER 0.1MF 10% 16V 1608 X7R	U	C5563	1-125-777-81	CAP,SMD,CER 0.1MF 10% 10V 1005 X7R
U	C3365	1-125-777-81	CAP,SMD,CER 0.1MF 10% 10V 1005 X7R	U	C4204	1-107-826-91	CAP,SMD,CER 0.1MF 10% 16V 1608 X7R	U	C5564	1-125-777-81	CAP,SMD,CER 0.1MF 10% 10V 1005 X7R
U	C3366	1									

REPRODUCTION PROHIBITED

SCPH-70007CB

K-chassis

SC	REF	P/N	DESCRIPTION	SC	REF	P/N	DESCRIPTION	SC	REF	P/N	DESCRIPTION
U	C5572	1-125-777-81	CAP,SMD,CER 0.1MF 10% 10V 1005 X7R	U	C7105	1-119-751-91	CAP,SMD,TAN 22MF 20% 16V B CASE	U	C8255	1-125-777-81	CAP,SMD,CER 0.1MF 10% 10V 1005 X7R
U	C5574	1-125-777-81	CAP,SMD,CER 0.1MF 10% 10V 1005 X7R	U	C7106	1-164-670-91	CAP,SMD,CER 1200PF 5% SL 16V 1608 NPO	U	C8256	1-125-777-81	CAP,SMD,CER 0.1MF 10% 10V 1005 X7R
U	C6004	1-135-259-91	CAP,SMD,TAN 10MF 20% 6.3V A CASE	U	C7107	1-107-826-91	CAP,SMD,CER 0.1MF 10% 16V 1608 X7R	U	C8257	1-125-837-91	CAP,SMD,CER 1MF 10% 6.3V 1608 X7R
U	C6055	1-135-259-91	CAP,SMD,TAN 10MF 20% 6.3V A CASE	U	C7108	1-104-851-91	CAP,SMD,TAN 10MF 20% 10V A CASE	U	C8263	1-128-004-21	CAP,SMD,ALU 10MF 20% 16V 3
U	C6064	1-135-259-91	CAP,SMD,TAN 10MF 20% 6.3V A CASE	U	C7109	1-119-751-91	CAP,SMD,TAN 22MF 20% 16V B CASE	U	C8264	1-125-777-81	CAP,SMD,CER 0.1MF 10% 10V 1005 X7R
U	C6102	1-107-820-81	CAP, SMD,CER 0.1MF +80/-20% 16V 1005 Y5V	U	C7110	1-164-670-91	CAP,SMD,CER 1200PF 5% SL 16V 1608 NPO	U	C8266	1-125-777-81	CAP,SMD,CER 0.1MF 10% 10V 1005 X7R
U	C6110	1-107-820-81	CAP, SMD,CER 0.1MF +80/-20% 16V 1005 Y5V	U	C7111	1-162-916-91	CAP,SMD,CER 12PF 5% 50V 1608 NPO	U	C8267	1-100-363-21	CAP,SMD,ALU 220MF 20% 4V 5
U	C6111	1-107-820-81	CAP, SMD,CER 0.1MF +80/-20% 16V 1005 Y5V	U	C7112	1-162-916-91	CAP,SMD,CER 12PF 5% 50V 1608 NPO	U	C8268	1-100-363-21	CAP,SMD,ALU 220MF 20% 4V 5
U	C6112	1-107-820-81	CAP, SMD,CER 0.1MF +80/-20% 16V 1005 Y5V	U	C7113	1-162-916-91	CAP,SMD,CER 12PF 5% 50V 1608 NPO	U	C8269	1-125-838-91	CAP,SMD,CER 2.2MF 10% 6.3V 2012 X7R
U	C6115	1-107-820-81	CAP, SMD,CER 0.1MF +80/-20% 16V 1005 Y5V	U	C7114	1-162-916-91	CAP,SMD,CER 12PF 5% 50V 1608 NPO	U	C8270	1-107-826-91	CAP,SMD,CER 0.1MF 10% 16V 1608 X7R
U	C6152	1-107-820-81	CAP, SMD,CER 0.1MF +80/-20% 16V 1005 Y5V	U	C7115	1-125-837-91	CAP,SMD,CER 1MF 10% 6.3V 1608 X7R	U	C8271	1-125-777-81	CAP,SMD,CER 0.1MF 10% 10V 1005 X7R
U	C6161	1-107-820-81	CAP, SMD,CER 0.1MF +80/-20% 16V 1005 Y5V	U	C7118	1-162-966-91	CAP,SMD,CER 2200PF 10% 50V 1608 X7R	U	C8275	1-164-935-81	CAP,SMD,CER 470PF 10% 50V 1005 X7R
U	C6162	1-125-777-81	CAP,SMD,CER 0.1MF 10% 10V 1005 X7R	U	C7120	1-162-966-91	CAP,SMD,CER 2200PF 10% 50V 1608 X7R	U	C8276	1-162-965-91	CAP,SMD,CER 1500PF 10% 50V 1608 X7R
U	C6165	1-107-820-81	CAP, SMD,CER 0.1MF +80/-20% 16V 1005 Y5V	U	C7121	1-125-837-91	CAP,SMD,CER 1MF 10% 6.3V 1608 X7R	U	C8277	1-162-965-91	CAP,SMD,CER 1500PF 10% 50V 1608 X7R
U	C6166	1-107-820-81	CAP, SMD,CER 0.1MF +80/-20% 16V 1005 Y5V	U	C7122	1-107-826-91	CAP,SMD,CER 0.1MF 10% 16V 1608 X7R	U	C8278	1-125-777-81	CAP,SMD,CER 0.1MF 10% 10V 1005 X7R
U	C6167	1-107-820-81	CAP, SMD,CER 0.1MF +80/-20% 16V 1005 Y5V	U	C7123	1-125-837-91	CAP,SMD,CER 1MF 10% 6.3V 1608 X7R	U	C8279	1-125-777-81	CAP,SMD,CER 0.1MF 10% 10V 1005 X7R
U	C6171	1-107-820-81	CAP, SMD,CER 0.1MF +80/-20% 16V 1005 Y5V	U	C7124	1-107-826-91	CAP,SMD,CER 0.1MF 10% 16V 1608 X7R	U	C8280	1-125-777-81	CAP,SMD,CER 0.1MF 10% 10V 1005 X7R
U	C6172	1-107-820-81	CAP, SMD,CER 0.1MF +80/-20% 16V 1005 Y5V	U	C7125	1-107-826-91	CAP,SMD,CER 0.1MF 10% 16V 1608 X7R	U	C8281	1-125-777-81	CAP,SMD,CER 0.1MF 10% 10V 1005 X7R
U	C6173	1-107-820-81	CAP, SMD,CER 0.1MF +80/-20% 16V 1005 Y5V	U	C7126	1-115-467-91	CAP,SMD,CER 0.22MF 10% 10V 1608 X7R	U	C8282	1-125-777-81	CAP,SMD,CER 0.1MF 10% 10V 1005 X7R
U	C6174	1-107-820-81	CAP, SMD,CER 0.1MF +80/-20% 16V 1005 Y5V	U	C7127	1-107-826-91	CAP,SMD,CER 0.1MF 10% 16V 1608 X7R	U	C8283	1-125-777-81	CAP,SMD,CER 0.1MF 10% 10V 1005 X7R
U	C6175	1-107-820-81	CAP, SMD,CER 0.1MF +80/-20% 16V 1005 Y5V	U	C7128	1-107-826-91	CAP,SMD,CER 0.1MF 10% 16V 1608 X7R	U	C8284	1-125-777-81	CAP,SMD,CER 0.1MF 10% 10V 1005 X7R
U	C6176	1-107-820-81	CAP, SMD,CER 0.1MF +80/-20% 16V 1005 Y5V	U	C7129	1-107-826-91	CAP,SMD,CER 0.1MF 10% 16V 1608 X7R	U	C8285	1-125-777-81	CAP,SMD,CER 0.1MF 10% 10V 1005 X7R
U	C6193	1-162-912-91	CAP,SMD,CER 7.0PF ± 0.5PF 50V 1608 NPO	U	C7130	1-107-826-91	CAP,SMD,CER 0.1MF 10% 16V 1608 X7R	U	C8286	1-125-777-81	CAP,SMD,CER 0.1MF 10% 10V 1005 X7R
U	C6201	1-164-882-81	CAP,SMD,CER 220PF 5% 16V 1005 NPO	U	C7131	1-162-964-91	CAP,SMD,CER 1000PF 10% 50V 1608 X7R	U	C8287	1-125-777-81	CAP,SMD,CER 0.1MF 10% 10V 1005 X7R
U	C6202	1-164-739-91	CAP,SMD,CER 560PF 5% 50V 1608 NPO	U	C7132	1-107-826-91	CAP,SMD,CER 0.1MF 10% 16V 1608 X7R	U	C8288	1-125-777-81	CAP,SMD,CER 0.1MF 10% 10V 1005 X7R
U	C6203	1-164-937-81	CAP,SMD,CER 1000PF 10% 50V 1005 X7R	U	C7133	1-162-964-91	CAP,SMD,CER 1000PF 10% 50V 1608 X7R	U	C8289	1-162-964-91	CAP,SMD,CER 1000PF 10% 50V 1608 X7R
U	C6204	1-164-941-81	CAP,SMD,CER 4700PF 10% 16V 1005 X7R	U	C7135	1-107-826-91	CAP,SMD,CER 0.1MF 10% 16V 1608 X7R	U	C8290	1-113-619-91	CAP,SMD,CER 0.47MF+80/-20% 10V 1608 Y5V
U	C6205	1-164-939-81	CAP,SMD,CER 2200PF 10% 50V 1005 X7R	U	C7136	1-162-966-91	CAP,SMD,CER 2200PF 10% 50V 1608 X7R	U	C8292	1-107-826-91	CAP,SMD,CER 0.1MF 10% 16V 1608 X7R
U	C6206	1-164-939-81	CAP,SMD,CER 2200PF 10% 50V 1005 X7R	U	C7137	1-162-966-91	CAP,SMD,CER 2200PF 10% 50V 1608 X7R	U	C8293	1-137-934-91	CAP,SMD,TAN 47MF 20% 10V B CASE
U	C6209	1-164-937-81	CAP,SMD,CER 1000PF 10% 50V 1005 X7R	U	C7139	1-164-739-91	CAP,SMD,CER 560PF 5% 50V 1608 NPO	U	C8296	1-100-363-21	CAP,SMD,ALU 220MF 20% 4V 5
U	C6210	1-164-943-81	CAP,SMD,CER 10000PF 10% 16V 1005 X7R	U	C7141	1-107-826-91	CAP,SMD,CER 0.1MF 10% 16V 1608 X7R	U	C8297	1-100-583-21	CAP,SMD,ALU 470MF 20% 4V 8
U	C6211	1-164-941-81	CAP,SMD,CER 4700PF 10% 16V 1005 X7R	U	C7143	1-107-826-91	CAP,SMD,CER 0.1MF 10% 16V 1608 X7R	U	C8298	1-100-363-21	CAP,SMD,ALU 220MF 20% 4V 5
U	C6212	1-100-415-91	CAP,SMD,CER 0.47MF 10% 6.3V 1005 X7R	U	C7144	1-162-968-91	CAP,SMD,CER 4700PF 10% 50V 1608 X7R	U	C9004	1-125-777-81	CAP,SMD,CER 0.1MF 10% 10V 1005 X7R
U	C6213	1-164-878-81	CAP,SMD,CER 150PF 5% 50V 1005 NPO	U	C7145	1-162-970-91	CAP,SMD,CER 0.01MF 10% 25V 1608 X7R	U	C9006	1-164-940-81	CAP,SMD,CER 3300PF 10% 16V 1005 X7R
U	C6214	1-164-943-81	CAP,SMD,CER 10000PF 10% 16V 1005 X7R	U	C7146	1-115-467-91	CAP,SMD,CER 0.22MF 10% 10V 1608 X7R	U	C9008	1-125-777-81	CAP,SMD,CER 0.1MF 10% 10V 1005 X7R
U	C6215	1-119-923-81	CAP,SMD,CER 0.047MF 10% 10V 1005 X7R	U	C7147	1-107-826-91	CAP,SMD,CER 0.1MF 10% 16V 1608 X7R	U	C9009	1-164-940-81	CAP,SMD,CER 3300PF 10% 16V 1005 X7R
U	C6216	1-164-882-81	CAP,SMD,CER 220PF 5% 16V 1005 NPO	U	C7151	1-107-826-91	CAP,SMD,CER 0.1MF 10% 16V 1608 X7R	U	C9013	1-125-777-81	CAP,SMD,CER 0.1MF 10% 10V 1005 X7R
U	C6217	1-125-777-81	CAP,SMD,CER 0.1MF 10% 10V 1005 X7R	U	C7152	1-162-966-91	CAP,SMD,CER 2200PF 10% 50V 1608 X7R	U	C9014	1-164-940-81	CAP,SMD,CER 3300PF 10% 16V 1005 X7R
U	C6218	1-125-777-81	CAP,SMD,CER 0.1MF 10% 10V 1005 X7R	U	C7153	1-162-966-91	CAP,SMD,CER 2200PF 10% 50V 1608 X7R	U	C9015	1-125-777-81	CAP,SMD,CER 0.1MF 10% 10V 1005 X7R
U	C6219	1-164-882-81	CAP,SMD,CER 220PF 5% 16V 1005 NPO	U	C7201	1-127-692-91	CAP,SMD,CER 10MF 10% 16V 3225 X7R	U	C9016	1-164-943-81	CAP,SMD,CER 10000PF 10% 16V 1005 X7R
U	C6220	1-164-882-81	CAP,SMD,CER 220PF 5% 16V 1005 NPO	U	C7203	1-164-935-81	CAP,SMD,CER 470PF 10% 50V 1005 X7R	U	C9017	1-164-939-81	CAP,SMD,CER 2200PF 10% 50V 1005 X7R
U	C6221	1-100-415-91	CAP,SMD,CER 0.47MF 10% 6.3V 1005 X7R	U	C7204	1-164-156-91	CAP,SMD,CER 0.1MF+80/-20% 25V 1608 Y5V	U	C9018	1-164-939-81	CAP,SMD,CER 2200PF 10% 50V 1005 X7R
U	C6222	1-125-777-81	CAP,SMD,CER 0.1MF 10% 10V 1005 X7R	U	C7205	1-164-156-91	CAP,SMD,CER 0.1MF+80/-20% 25V 1608 Y5V	U	C9019	1-164-937-81	CAP,SMD,CER 1000PF 10% 50V 1005 X7R
U	C6223	1-135-259-91	CAP,SMD,TAN 10MF 20% 6.3V A CASE	U	C7206	1-164-943-81	CAP,SMD,CER 10000PF 10% 16V 1005 X7R	U	C9020	1-125-777-81	CAP,SMD,CER 0.1MF 10% 10V 1005 X7R
U	C6224	1-125-777-81	CAP,SMD,CER 0.1MF 10% 10V 1005 X7R	U	C7207	1-164-677-91	CAP,SMD,CER 0.033MF 10% 16V 1608 X7R	U	C9021	1-125-777-81	CAP,SMD,CER 0.1MF 10% 10V 1005 X7R
U	C6225	1-164-941-81	CAP,SMD,CER 4700PF 10% 16V 1005 X7R	U	C7208	1-164-943-81	CAP,SMD,CER 10000PF 10% 16V 1005 X7R	U	C9022	1-125-777-81	CAP,SMD,CER 0.1MF 10% 10V 1005 X7R
U	C6226	1-125-777-81	CAP,SMD,CER 0.1MF 10% 10V 1005 X7R	U	C7209	1-164-156-91	CAP,SMD,CER 0.1MF+80/-20% 25V 1608 Y5V	U	C9023	1-125-777-81	CAP,SMD,CER 0.1MF 10% 10V 1005 X7R
U	C6227	1-125-777-81	CAP,SMD,CER 0.1MF 10% 10V 1005 X7R	U	C7210	1-164-943-81	CAP,SMD,CER 10000PF 10% 16V 1005 X7R	U	C9024	1-125-777-81	CAP,SMD,CER 0.1MF 10% 10V 1005 X7R
U	C6318	1-125-777-81	CAP,SMD,CER 0.1MF 10% 10V 1005 X7R	U	C7211	1-164-943-81	CAP,SMD,CER 10000PF 10% 16V 1005 X7R	U	C9025	1-164-939-81	CAP,SMD,CER 2200PF 10% 50V 1005 X7R
U	C6319	1-162-916-91	CAP,SMD,CER 12PF 5% 50V 1608 NPO	U	C7214	1-125-837-91	CAP,SMD,CER 1MF 10% 6.3V 1608 X7R	U	C9026	1-164-939-81	CAP,SMD,CER 2200PF 10% 50V 1005 X7R
U	C6320	1-125-777-81	CAP,SMD,CER 0.1MF 10% 10V 1005 X7R	U	C7215	1-164-937-81	CAP,SMD,CER 1000PF 10% 50V 1005 X7R	U	C9027	1-125-777-81	CAP,SMD,CER 0.1MF 10% 10V 1005 X7R
U	C6323	1-125-777-81	CAP,SMD,CER 0.1MF 10% 10V 1005 X7R	U	C7216	1-125-777-81	CAP,SMD,CER 0.1MF 10% 10V 1005 X7R	U	C9028	1-125-777-81	CAP,SMD,CER 0.1MF 10% 10V 1005 X7R
U	C6325	1-125-777-81	CAP,SMD,CER 0.1MF 10% 10V 1005 X7R	U	C7217	1-117-446-81	CAP,SMD,CER 3900PF 10% 16V 1005 X7R	U	C9030	1-164-939-81	CAP,SMD,CER 2200PF 10% 50V 1005 X7R
U	C6326	1-125-777-81	CAP,SMD,CER 0.1MF 10% 10V 1005 X7R	U	C7218	1-125-777-81	CAP,SMD,CER 0.1MF 10% 10V 1005 X7R	U	C9031	1-125-777-81	CAP,SMD,CER 0.1MF 10% 10V 1005 X7R
U	C6327	1-125-777-81	CAP,SMD,CER 0.1MF 10% 10V 1005 X7R	U	C7221	1-127-988-81	CAP,SMD,CER 15000PF 10% 16V 1005 X7R	U	C9032	1-104-913-91	CAP,SMD,TAN 10MF 20% 16V B CASE
U	C6397	1-162-917-91	CAP,SMD,CER 15PF 5% 50V 1608 NPO	U	C7301	1-162-927-91	CAP,SMD,CER 100PF 5% 50V 1608 NPO	U	C9033	1-135-787-91	CAP,SMD,CER 0.001MF 10% 2000V 4520 X7R
U	C6398	1-125-777-81	CAP,SMD,CER 0.1MF 10% 10V 1005 X7R	U	C7302	1-162-927-91	CAP,SMD,CER 100PF 5% 50V 1608 NPO	U	C9036	1-127-760-91	CAP,SMD,CER 4.7MF 10% 6.3V 2012 X7R
U	C6401	1-125-777-81	CAP,SMD,CER 0.1MF 10% 10V 1005 X7R	U	C7303	1-162-927-91	CAP,SMD,CER 100PF 5% 50V 1608 NPO	U	C9114	1-164-937-81	CAP,SMD,CER 1000PF 10% 50V 1005 X7R
U	C6402	1-164-937-81	CAP,SMD,CER 1000PF 10% 50V 1005 X7R	U	C7304	1-162-927-91	CAP,SMD,CER 100PF 5% 50V 1608 NPO	U	C9204	1-125-777-81	CAP,SMD,CER 0.1MF 10% 10V 1005 X7R
U	C7001	1-104-851-91	CAP,SMD,TAN 10MF 20% 10V A CASE	U	C7301	1-164-937-81	CAP,SMD,CER 1000PF 10% 50V 1005 X7R	U	C9205	1-104-913-91	CAP,SMD,TAN 10MF 20% 16V B CASE
U	C7002	1-164-505-91	CAP,SMD,CER 2.2 MF+80/-20% 16V 2012 Y5V	U	C7902	1-164-937-81	CAP,SMD,CER 1000PF 10% 50V 1005 X7R	U	C9206	1-104-913-91	CAP,SMD,TAN 10MF 20% 16V B CASE
U	C7101	1-115-467-91	CAP,SMD,CER 0.22MF 10% 10V 1608 X7R	U	C7903	1-164-937-81	CAP,SMD,CER 1000PF 10% 50V 1005 X7R	U	C9207	1-125-777-81	CAP,SMD,CER 0.1MF 10% 10V 1005 X7R
U	C7102	1-115-467-91	CAP,SMD,CER 0.22MF 10% 10V 1608 X7R	U	C8247	1-125-777-81	CAP,SMD				

REPRODUCTION PROHIBITED

SCPH-70007CB

K-chassis

SC	REF	P/N	DESCRIPTION	SC	REF	P/N	DESCRIPTION	SC	REF	P/N	DESCRIPTION
U	R1063	1-218-961-81	RES,SMD,4.7K 5% 1/16W 1005	U	R3329	1-218-937-81	RES,SMD,47 5% 1/16W 1005	U	R4113	1-218-867-91	RES,SMD,6.8K 0.5% 1/10W 1608 (TXI C4105/C4106 TXI C4104)
U	R1064	1-218-961-81	RES,SMD,4.7K 5% 1/16W 1005	U	R3330	1-216-803-91	RES,SMD,33 5% 1/10W 1608	U	R4200	1-218-855-91	RES,SMD,2.2K 0.5% 1/10W 1608
U	R1091	1-218-990-81	CONDUCTOR,SMD,1005	U	R3331	1-218-937-81	RES,SMD,47 5% 1/16W 1005	U	R4201	1-218-839-91	RES,SMD,470 0.5% 1/10W 1608 (FJT C4105/C4106 FJT C4104)
U	R1110	1-211-983-91	RES,SMD,39 0.5% 1/10W 1608	U	R3333	1-218-990-81	CONDUCTOR,SMD,1005	U	R4201	1-218-849-91	RES,SMD,470 0.5% 1/10W 1608 (TXI C4105/C4106 TXI C4104)
U	R1111	1-211-983-91	RES,SMD,39 0.5% 1/10W 1608	U	R3335	1-218-990-81	CONDUCTOR,SMD,1005				
U	R1112	1-211-989-91	RES,SMD,68 0.5% 1/10W 1608	U	R3349	1-216-821-91	RES,SMD,1.0K5%1/10W1608,				
U	R1113	1-211-989-91	RES,SMD,68 0.5% 1/10W 1608	U	R3350	1-218-937-81	RES,SMD,47 5% 1/16W 1005				
U	R1114	1-211-983-91	RES,SMD,39 0.5% 1/10W 1608	U	R3352	1-216-797-91	RES,SMD,10 5% 1/10W 1608	U	R4202	1-218-873-91	RES,SMD,12K 0.5% 1/10W 1608 (FJT C4105/C4106 FJT C4104)
U	R1115	1-211-983-91	RES,SMD,39 0.5% 1/10W 1608	U	R3353	1-216-821-91	RES,SMD,1.0K5%1/10W1608,				
U	R1116	1-211-983-91	RES,SMD,39 0.5% 1/10W 1608	U	R3354	1-216-827-91	RES,SMD,3.3K 5% 1/10W 1608	U	R4202	1-218-881-91	RES,SMD,27K 0.5% 1/10W 1608 (TXI C4105/C4106 TXI C4104)
U	R1117	1-211-983-91	RES,SMD,39 0.5% 1/10W 1608	U	R3356	1-216-801-91	RES,SMD,22 5% 1/10W 1608	U	R4203	1-218-858-91	RES,SMD,3K 0.5% 1/10W 1608 (FJT C4105/C4106 FJT C4104)
U	R1118	1-211-973-91	RES,SMD,15 0.5% 1/10W 1608	U	R3365	1-218-937-81	RES,SMD,47 5% 1/16W 1005	U	R4203	1-218-865-91	RES,SMD,5.6K 0.5% 1/10W 1608 (TXI C4105/C4106 TXI C4104)
U	R1119	1-211-973-91	RES,SMD,15 0.5% 1/10W 1608	U	R3366	1-218-937-81	RES,SMD,47 5% 1/16W 1005				
U	R1120	1-211-973-91	RES,SMD,15 0.5% 1/10W 1608	U	R3367	1-218-937-81	RES,SMD,47 5% 1/16W 1005				
U	R1121	1-211-973-91	RES,SMD,15 0.5% 1/10W 1608	U	R3368	1-218-937-81	RES,SMD,47 5% 1/16W 1005	U	R4204	1-216-864-91	CONDUCTOR,SMD,2A 100V 1608 (FJT C4105/C4106 FJT C4104)
U	R1159	1-218-933-81	RES,SMD,22 5% 1/16W 1005	U	R3392	1-216-801-91	RES,SMD,22 5% 1/10W 1608				
U	R1164	1-218-990-81	CONDUCTOR,SMD,1005	U	R3393	1-218-933-81	RES,SMD,22 5% 1/16W 1005	U	R4206	1-218-888-91	RES,SMD,51K0.5%1/10W1608, (FJT C4105/C4106 FJT C4104)
U	R1439	1-218-937-81	RES,SMD,47 5% 1/16W 1005	U	R3394	1-216-801-91	RES,SMD,22 5% 1/10W 1608				
U	R1501	1-218-937-81	RES,SMD,47 5% 1/16W 1005	U	R3395	1-218-957-81	RES,SMD,2.2K 5% 1/16W 1005	U	R4206	1-218-873-91	RES,SMD,12K 0.5% 1/10W 1608 (TXI C4105/C4106 TXI C4104)
U	R1502	1-218-937-81	RES,SMD,47 5% 1/16W 1005	U	R3396	1-218-933-81	RES,SMD,22 5% 1/16W 1005				
U	R1601	1-211-981-91	RES,SMD,33 0.5% 1/10W 1608	U	R3397	1-218-933-81	RES,SMD,22 5% 1/16W 1005	U	R4208	1-216-864-91	CONDUCTOR,SMD,2A 100V 1608 (FJT C4105/C4106 FJT C4104)
U	R1602	1-208-865-81	RES,SMD,120 0.5% 1/16W 1005	U	R3399	1-216-801-91	RES,SMD,22 5% 1/10W 1608				
U	R1603	1-211-981-91	RES,SMD,33 0.5% 1/10W 1608	U	R3900	1-216-864-91	CONDUCTOR,SMD,2A 100V 1608	U	R4210	1-216-839-91	RES,SMD,33K 5% 1/10W 1608
U	R1604	1-208-865-81	RES,SMD,120 0.5% 1/16W 1005	U	R3901	1-216-864-91	CONDUCTOR,SMD,2A 100V 1608	U	R4211	1-216-836-91	RES,SMD,18K 5% 1/10W 1608
U	R1606	1-216-809-91	RES,SMD,100 5% 1/10W 1608	U	R3902	1-216-864-91	CONDUCTOR,SMD,2A 100V 1608	U	R4212	1-216-864-91	CONDUCTOR,SMD,2A 100V 1608 (FJT C4105/C4106 FJT C4104)
U	R1607	1-216-809-91	RES,SMD,100 5% 1/10W 1608	U	R3903	1-216-864-91	CONDUCTOR,SMD,2A 100V 1608				
U	R1696	1-218-933-81	RES,SMD,22 5% 1/16W 1005	U	R3904	1-216-864-91	CONDUCTOR,SMD,2A 100V 1608	U	R4212	1-216-797-91	RES,SMD,10 5% 1/10W 1608 (TXI C4105/C4106 TXI C4104)
U	R1703	1-218-871-91	RES,SMD,10K 0.5% 1/10W 1608	U	R3905	1-216-864-91	CONDUCTOR,SMD,2A 100V 1608				
U	R3021	1-216-801-91	RES,SMD,22 5% 1/10W 1608	U	R3906	1-216-864-91	CONDUCTOR,SMD,2A 100V 1608	U	R4213	1-218-863-91	RES,SMD,4.7K 0.5% 1/10W 1608 (FJT C4105/C4106 FJT C4104)
U	R3022	1-216-801-91	RES,SMD,22 5% 1/10W 1608	U	R3907	1-216-864-91	CONDUCTOR,SMD,2A 100V 1608				
U	R3023	1-216-801-91	RES,SMD,22 5% 1/10W 1608	U	R3908	1-216-864-91	CONDUCTOR,SMD,2A 100V 1608	U	R4213	1-218-871-91	RES,SMD,10K 0.5% 1/10W 1608 (TXI C4105/C4106 TXI C4104)
U	R3081	1-218-965-81	RES,SMD,10K 5% 1/16W 1005	U	R3909	1-216-864-91	CONDUCTOR,SMD,2A 100V 1608				
U	R3089	1-216-864-91	CONDUCTOR,SMD,2A 100V 1608	U	R4008	1-216-810-91	RES,SMD,120 5% 1/10W 1608	U	R4300	1-216-821-91	RES,SMD,1.0K5%1/10W1608,
U	R3091	1-216-864-91	CONDUCTOR,SMD,2A 100V 1608	U	R4009	1-216-825-91	RES,SMD,2.2K 5% 1/10W 1608	U	R4302	1-216-027-91	RES,SMD,120 5% 1/10W 2012
U	R3100	1-218-937-81	RES,SMD,47 5% 1/16W 1005	U	R4010	1-216-813-91	RES,SMD,220 5% 1/10W 2012	U	R4303	1-216-027-91	RES,SMD,120 5% 1/10W 2012
U	R3101	1-218-937-81	RES,SMD,47 5% 1/16W 1005	U	R4059	1-216-309-91	RES,SMD,5.6 5% 1/10W 1608	U	R4304	1-216-027-91	RES,SMD,120 5% 1/10W 2012
U	R3102	1-218-937-81	RES,SMD,47 5% 1/16W 1005	U	R4060	1-216-845-91	RES,SMD,100K 5% 1/10W 1608	U	R4305	1-216-296-91	CONDUCTOR,SMD,2A 500V 3216
U	R3103	1-218-937-81	RES,SMD,47 5% 1/16W 1005	U	R4061	1-216-845-91	RES,SMD,100K 5% 1/10W 1608	U	R4306	1-216-296-91	CONDUCTOR,SMD,2A 500V 3216
U	R3104	1-218-937-81	RES,SMD,47 5% 1/16W 1005	U	R4065	1-216-864-91	CONDUCTOR,SMD,2A 100V 1608	U	R4312	1-216-833-91	RES,SMD,10K 5% 1/10W 1608
U	R3105	1-218-937-81	RES,SMD,47 5% 1/16W 1005	U	R4069	1-216-833-91	RES,SMD,10K5% 1/10W 1608	U	R4313	1-216-810-91	RES,SMD,120 5% 1/10W 1608
U	R3106	1-218-937-81	RES,SMD,47 5% 1/16W 1005	U	R4101	1-218-871-91	RES,SMD,10K 0.5% 1/10W 1608 (FJT C4105/C4106 FJT C4104)	U	R4314	1-216-821-91	RES,SMD,1.0K5%1/10W1608,
U	R3107	1-218-937-81	RES,SMD,47 5% 1/16W 1005					U	R4315	1-216-295-91	CONDUCTOR,SMD,2A 500V 2012
U	R3108	1-218-937-81	RES,SMD,47 5% 1/16W 1005	U	R4101	1-218-867-91	RES,SMD,6.8K 0.5% 1/10W 1608 (TXI C4105/C4106 TXI C4104)	U	R4316	1-216-295-91	CONDUCTOR,SMD,2A 500V 2012
U	R3109	1-218-937-81	RES,SMD,47 5% 1/16W 1005	U	R4102	1-216-864-91	CONDUCTOR,SMD,2A 100V 1608 (FJT C4105/C4106 FJT C4104)	U	R4318	1-216-296-91	CONDUCTOR,SMD,2A 500V 3216
U	R3110	1-218-937-81	RES,SMD,47 5% 1/16W 1005					U	R4561	1-216-864-91	CONDUCTOR,SMD,2A 100V 1608
U	R3111	1-218-937-81	RES,SMD,47 5% 1/16W 1005	U	R4102	1-218-857-91	RES,SMD,2.7K 0.5% 1/10W 1608 (TXI C4105/C4106 TXI C4104)	U	R4562	1-216-864-91	CONDUCTOR,SMD,2A 100V 1608
U	R3112	1-218-937-81	RES,SMD,47 5% 1/16W 1005					U	R4563	1-216-864-91	CONDUCTOR,SMD,2A 100V 1608
U	R3113	1-218-937-81	RES,SMD,47 5% 1/16W 1005	U	R4103	1-218-854-91	RES,SMD,2K 0.5% 1/10W 1608 (FJT C4105/C4106 FJT C4104)	U	R4564	1-216-864-91	CONDUCTOR,SMD,2A 100V 1608
U	R3114	1-218-937-81	RES,SMD,47 5% 1/16W 1005					U	R4565	1-216-864-91	CONDUCTOR,SMD,2A 100V 1608
U	R3115	1-218-937-81	RES,SMD,47 5% 1/16W 1005	U	R4103	1-218-835-91	RES,SMD,330 0.5% 1/10W 1608 (TXI C4105/C4106 TXI C4104)	U	R4901	1-216-864-91	CONDUCTOR,SMD,2A 100V 1608
U	R3116	1-218-937-81	RES,SMD,47 5% 1/16W 1005					U	R4902	1-216-864-91	CONDUCTOR,SMD,2A 100V 1608
U	R3117	1-218-937-81	RES,SMD,47 5% 1/16W 1005	U	R4104	1-218-867-91	RES,SMD,6.8K 0.5% 1/10W 1608 (FJT C4105/C4106 FJT C4104)	U	R4904	1-218-965-81	RES,SMD,10K 5% 1/16W 1005
U	R3118	1-218-945-81	RES,SMD,220 5% 1/16W 1005					U	R5501	1-218-941-81	RES,SMD,100 5% 1/16W 1005
U	R3119	1-218-945-81	RES,SMD,220 5% 1/16W 1005	U	R4104	1-218-847-91	RES,SMD,1.0K 0.5% 1/10W 1608 (TXI C4105/C4106 TXI C4104)	U	R5502	1-216-806-91	RES,SMD,56 5% 1/10W 1608
U	R3120	1-218-949-81	RES,SMD,470 5% 1/16W 1005					U	R5503	1-218-953-81	RES,SMD,1.0K 5% 1/16W 1005
U	R3121	1-218-949-81	RES,SMD,470 5% 1/16W 1005	U	R4109	1-216-839-91	RES,SMD,33K 5% 1/10W 1608	U	R5504	1-216-806-91	RES,SMD,56 5% 1/10W 1608
U	R3300	1-216-821-91	RES,SMD,1.0K5%1/10W1608,	U	R4110	1-216-836-91	RES,SMD,18K 5% 1/10W 1608	U	R5506	1-218-990-81	CONDUCTOR,SMD,1005
U	R3309	1-216-833-91	RES,SMD,10K 5% 1/10W 1608	U	R4112	1-216-864-91	CONDUCTOR,SMD,2A 100V 1608 (FJT C4105/C4106 FJT C4104)	U	R5507	1-216-803-91	RES,SMD,33 5% 1/10W 1608
U	R3311	1-216-829-91	RES,SMD,4.7K 5% 1/10W 1608					U	R5508	1-218-941-81	RES,SMD,100 5% 1/16W 1005
U	R3312	1-218-990-81	CONDUCTOR,SMD,1005	U	R4112	1-216-797-91	RES,SMD,10 5% 1/10W 1608 (TXI C4105/C4106 TXI C4104)	U	R5509	1-218-933-81	RES,SMD,22 5% 1/16W 1005
U	R3320	1-216-801-91	RES,SMD,22 5% 1/10W 1608					U	R5510	1-218-941-81	RES,SMD,100 5% 1/16W 1005
U	R3321	1-216-823-91	RES,SMD,1.5K 5% 1/10W 1608	U	R4113	1-218-843-91	RES,SMD,680 0.5% 1/10W 1608 (FJT C4105/C4106 FJT C4104)	U	R5513	1-218-937-81	RES,SMD,47 5% 1/16W 1005
U	R3322	1-216-857-91	RES,SMD,1.0M 5% 1/10W 1608					U	R5516	1-216-809-91	RES,SMD,100 5% 1/10W 1608
U	R3324	1-216-833-91	RES,SMD,10K 5% 1/10W 1608					U	R5517	1-216-809-91	RES,SMD,100 5% 1/10W 1608
U	R3328	1-216-841-91	RES,SMD,47K 5% 1/10W 1608								

SC	REF	P/N	DESCRIPTION	SC	REF	P/N	DESCRIPTION	SC	REF	P/N	DESCRIPTION
U	R5522	1-216-833-91	RES,SMD,10K 5% 1/10W 1608	U	R7105	1-216-833-91	RES,SMD,10K 5% 1/10W 1608	U	R9018	1-218-990-81	CONDUCTOR,SMD,1005
U	R5550	1-218-937-81	RES,SMD,47 5% 1/16W 1005	U	R7106	1-216-158-91	RES,SMD,22 5% 1/4W 3216	U	R9019	1-211-990-91	RES,SMD,75 0.5% 1/10W 1608
U	R5551	1-218-937-81	RES,SMD,47 5% 1/16W 1005	U	R7107	1-216-158-91	RES,SMD,22 5% 1/4W 3216	U	R9020	1-218-990-81	CONDUCTOR,SMD,1005
U	R5552	1-218-937-81	RES,SMD,47 5% 1/16W 1005	U	R7108	1-218-286-91	RES,SMD,91 5% 1/10W 1608	U	R9021	1-218-990-81	CONDUCTOR,SMD,1005
U	R5553	1-218-937-81	RES,SMD,47 5% 1/16W 1005	U	R7109	1-218-286-91	RES,SMD,91 5% 1/10W 1608	U	R9022	1-211-990-91	RES,SMD,75 0.5% 1/10W 1608
U	R5554	1-218-945-81	RES,SMD,220 5% 1/16W 1005	U	R7110	1-216-833-91	RES,SMD,10K 5% 1/10W 1608	U	R9023	1-211-990-91	RES,SMD,75 0.5% 1/10W 1608
U	R5559	1-216-806-91	RES,SMD,56 5% 1/10W 1608	U	R7112	1-216-158-91	RES,SMD,22 5% 1/4W 3216	U	R9024	1-216-803-91	RES,SMD,33 5% 1/10W 1608
U	R5560	1-216-864-91	CONDUCTOR,SMD,2A 100V 1608	U	R7113	1-216-158-91	RES,SMD,22 5% 1/4W 3216	U	R9025	1-218-961-81	RES,SMD,4.7K 5% 1/16W 1005
U	R5561	1-216-864-91	CONDUCTOR,SMD,2A 100V 1608	U	R7124	1-218-873-91	RES,SMD,12K 0.5% 1/10W 1608	U	R9027	1-216-296-91	CONDUCTOR,SMD,2A 500V 3216
U	R5562	1-218-959-81	RES,SMD,3.3K 5% 1/16W 1005	U	R7126	1-216-845-91	RES,SMD,100K 5% 1/10W 1608	U	R9028	1-216-803-91	RES,SMD,33 5% 1/10W 1608
U	R5563	1-218-935-81	RES,SMD,33 5% 1/16W 1005	U	R7127	1-216-857-91	RES,SMD,1.0M 5% 1/10W 1608	U	R9111	1-218-990-81	CONDUCTOR,SMD,1005
U	R5564	1-216-806-91	RES,SMD,56 5% 1/10W 1608	U	R7128	1-216-821-91	RES,SMD,1.0K5%1/10W1608,	U	R9112	1-218-961-81	RES,SMD,4.7K 5% 1/16W 1005
U	R5565	1-216-806-91	RES,SMD,56 5% 1/10W 1608	U	R7129	1-216-833-91	RES,SMD,10K 5% 1/10W 1608	U	R9124	1-218-961-81	RES,SMD,4.7K 5% 1/16W 1005
U	R5575	1-218-982-81	RES,SMD,270K 5% 1/16W 1005	U	R7210	1-217-671-91	RES,SMD,1 5% 1/10W 2012	U	R9201	1-218-965-81	RES,SMD,10K 5% 1/16W 1005
U	R5576	1-218-965-81	RES,SMD,10K 5% 1/16W 1005	U	R7211	1-217-671-91	RES,SMD,1 5% 1/10W 2012	U	R9202	1-218-965-81	RES,SMD,10K 5% 1/16W 1005
U	R5577	1-208-881-81	RES,SMD,560 0.5% 1/16W 1005	U	R7212	1-217-671-91	RES,SMD,1 5% 1/10W 2012	U	R9203	1-218-965-81	RES,SMD,10K 5% 1/16W 1005
U	R5578	1-208-881-81	RES,SMD,560 0.5% 1/16W 1005	U	R7216	1-218-876-91	RES,SMD,16K 0.5% 1/10W 1608	U	R9205	1-218-955-81	RES,SMD,1.5K 5% 1/16W 1005
U	R5579	1-218-965-81	RES,SMD,10K 5% 1/16W 1005	U	R7218	1-218-871-91	RES,SMD,10K 0.5% 1/10W 1608	U	R9209	1-245-604-81	RES,SMD,10M 5% 1/16W 1005
U	R5580	1-218-982-81	RES,SMD,270K 5% 1/16W 1005	U	R7219	1-218-973-81	RES,SMD,47K 5% 1/16W 1005	U	R9210	1-218-989-81	RES,SMD,1M 5% 1/16W 1005
U	R5581	1-216-864-91	CONDUCTOR,SMD,2A 100V 1608	U	R7220	1-218-882-91	RES,SMD,30K 0.5% 1/10W 1608	U	R9211	1-218-950-81	RES,SMD,560,5%,1/16W,1005
U	R5592	1-218-961-81	RES,SMD,4.7K 5% 1/16W 1005	U	R7221	1-218-882-91	RES,SMD,30K 0.5% 1/10W 1608	U	R9231	1-218-965-81	RES,SMD,10K 5% 1/16W 1005
U	R5593	1-218-961-81	RES,SMD,4.7K 5% 1/16W 1005	U	R7222	1-218-982-81	RES,SMD,270K 5% 1/16W 1005	U	R9233	1-218-965-81	RES,SMD,10K 5% 1/16W 1005
U	R6107	1-218-965-81	RES,SMD,10K 5% 1/16W 1005	U	R7223	1-218-882-91	RES,SMD,30K 0.5% 1/10W 1608	U	R9234	1-218-965-81	RES,SMD,10K 5% 1/16W 1005
U	R6109	1-218-965-81	RES,SMD,10K 5% 1/16W 1005	U	R7224	1-218-882-91	RES,SMD,30K 0.5% 1/10W 1608	U	R9250	1-218-965-81	RES,SMD,10K 5% 1/16W 1005
U	R6142	1-216-833-91	RES,SMD,10K 5% 1/10W 1608	U	R7227	1-218-871-91	RES,SMD,10K 0.5% 1/10W 1608				
U	R6149	1-216-833-91	RES,SMD,10K 5% 1/10W 1608	U	R7228	1-218-876-91	RES,SMD,16K 0.5% 1/10W 1608				
U	R6150	1-216-833-91	RES,SMD,10K 5% 1/10W 1608	U	R7230	1-218-976-81	RES,SMD,82K 5% 1/16W 1005				
U	R6201	1-218-967-81	RES,SMD,15K 5% 1/16W 1005	U	R7231	1-218-971-81	RES,SMD,33K 5% 1/16W 1005	U	RB1006	1-233-414-21	RES,SMD,RNET 4.7K 5% 1/16W 3216 8P4R
U	R6202	1-218-977-81	RES,SMD,100K 5% 1/16W 1005	U	R7232	1-218-960-81	RES,SMD,3.9K 5% 1/16W 1005	U	RB1007	1-233-880-21	RES,SMD,RNET 68 5% 1/16W 3216 8P4R
U	R6204	1-218-961-81	RES,SMD,4.7K 5% 1/16W 1005	U	R8216	1-218-990-81	CONDUCTOR,SMD,1005	U	RB1008	1-233-880-21	RES,SMD,RNET 68 5% 1/16W 3216 8P4R
U	R6210	1-218-965-81	RES,SMD,10K 5% 1/16W 1005	U	R8230	1-208-860-81	RES,SMD,75 0.5% 1/16W 1005	U	RB1009	1-233-880-21	RES,SMD,RNET 68 5% 1/16W 3216 8P4R
U	R6212	1-218-977-81	RES,SMD,100K 5% 1/16W 1005	U	R8231	1-208-860-81	RES,SMD,75 0.5% 1/16W 1005	U	RB1010	1-233-880-21	RES,SMD,RNET 68 5% 1/16W 3216 8P4R
U	R6213	1-218-965-81	RES,SMD,10K 5% 1/16W 1005	U	R8232	1-208-860-81	RES,SMD,75 0.5% 1/16W 1005	U	RB1011	1-233-880-21	RES,SMD,RNET 68 5% 1/16W 3216 8P4R
U	R6214	1-218-977-81	RES,SMD,100K 5% 1/16W 1005	U	R8233	1-208-860-81	RES,SMD,75 0.5% 1/16W 1005	U	RB1012	1-233-880-21	RES,SMD,RNET 68 5% 1/16W 3216 8P4R
U	R6215	1-218-967-81	RES,SMD,15K 5% 1/16W 1005	U	R8234	1-208-860-81	RES,SMD,75 0.5% 1/16W 1005	U	RB1013	1-233-880-21	RES,SMD,RNET 68 5% 1/16W 3216 8P4R
U	R6216	1-218-967-81	RES,SMD,15K 5% 1/16W 1005	U	R8235	1-208-860-81	RES,SMD,75 0.5% 1/16W 1005	U	RB1014	1-233-880-21	RES,SMD,RNET 68 5% 1/16W 3216 8P4R
U	R6217	1-220-804-81	RES,SMD,2.2M 5% 1/16W 1005	U	R8245	1-218-937-81	RES,SMD,47 5% 1/16W 1005	U	RB1015	1-233-880-21	RES,SMD,RNET 68 5% 1/16W 3216 8P4R
U	R6218	1-208-928-81	RES,SMD,51K 0.5% 1/16W 1005	U	R8251	1-216-837-91	RES,SMD,22K 5% 1/10W 1608	U	RB1016	1-233-880-21	RES,SMD,RNET 68 5% 1/16W 3216 8P4R
U	R6219	1-218-959-81	RES,SMD,3.3K 5% 1/16W 1005	U	R8252	1-216-839-91	RES,SMD,33K 5% 1/10W 1608	U	RB1017	1-233-880-21	RES,SMD,RNET 68 5% 1/16W 3216 8P4R
U	R6220	1-218-985-81	RES,SMD,470K 5% 1/16W 1005	U	R8253	1-216-833-91	RES,SMD,10K 5% 1/10W 1608	U	RB1018	1-233-880-21	RES,SMD,RNET 68 5% 1/16W 3216 8P4R
U	R6221	1-218-959-81	RES,SMD,3.3K 5% 1/16W 1005	U	R8257	1-216-824-91	RES,SMD,1.8K 5% 1/10W 1608	U	RB1019	1-233-880-21	RES,SMD,RNET 68 5% 1/16W 3216 8P4R
U	R6222	1-218-971-81	RES,SMD,33K 5% 1/16W 1005	U	R8259	1-216-824-91	RES,SMD,1.8K 5% 1/10W 1608	U	RB1020	1-233-880-21	RES,SMD,RNET 68 5% 1/16W 3216 8P4R
U	R6223	1-218-965-81	RES,SMD,10K 5% 1/16W 1005	U	R8272	1-218-851-91	RES,SMD,1.5K 0.5% 1/10W 1608	U	RB1601	1-234-496-21	RES,SMD,RNET 39 2% 1/16W 6416 16P8R
U	R6224	1-218-977-81	RES,SMD,100K 5% 1/16W 1005	U	R8273	1-218-848-91	RES,SMD,1.1K 0.5% 1/10W 1608	U	RB1602	1-234-496-21	RES,SMD,RNET 39 2% 1/16W 6416 16P8R
U	R6225	1-218-978-81	RES,SMD,120K 5% 1/16W 1005	U	R8278	1-218-851-91	RES,SMD,1.5K 0.5% 1/10W 1608	U	RB1603	1-234-496-21	RES,SMD,RNET 39 2% 1/16W 6416 16P8R
U	R6226	1-218-969-81	RES,SMD,22K 5% 1/16W 1005	U	R8279	1-218-848-91	RES,SMD,1.1K 0.5% 1/10W 1608	U	RB1604	1-234-496-21	RES,SMD,RNET 39 2% 1/16W 6416 16P8R
U	R6227	1-218-977-81	RES,SMD,100K 5% 1/16W 1005	U	R8292	1-218-965-81	RES,SMD,10K 5% 1/16W 1005	U	RB1605	1-234-496-21	RES,SMD,RNET 39 2% 1/16W 6416 16P8R
U	R6228	1-218-971-81	RES,SMD,33K 5% 1/16W 1005	U	R8297	1-216-805-91	RES,SMD,47 5% 1/10W 1608	U	RB1606	1-234-496-21	RES,SMD,RNET 39 2% 1/16W 6416 16P8R
U	R6305	1-218-965-81	RES,SMD,10K 5% 1/16W 1005	U	R8298	1-216-805-91	RES,SMD,47 5% 1/10W 1608	U	RB3322	1-233-412-21	RES,SMD,RNET 1.0K 5% 1/16W 3216 8P4R
U	R6310	1-216-857-91	RES,SMD,1.0M 5% 1/10W 1608	U	R8299	1-216-805-91	RES,SMD,47 5% 1/10W 1608	U	RB3323	1-233-412-21	RES,SMD,RNET 1.0K 5% 1/16W 3216 8P4R
U	R6311	1-216-823-91	RES,SMD,1.5K 5% 1/10W 1608	U	R9003	1-218-961-81	RES,SMD,4.7K 5% 1/16W 1005	U	RB3324	1-233-412-21	RES,SMD,RNET 1.0K 5% 1/16W 3216 8P4R
U	R6312	1-216-833-91	RES,SMD,10K 5% 1/10W 1608	U	R9004	1-218-965-81	RES,SMD,10K 5% 1/16W 1005	U	RB3327	1-233-415-21	RES,SMD,RNET 10K 5% 1/16W 3216 8P4R
U	R6321	1-216-833-91	RES,SMD,10K 5% 1/10W 1608	U	R9005	1-218-961-81	RES,SMD,4.7K 5% 1/16W 1005	U	RB3328	1-233-414-21	RES,SMD,RNET 4.7K 5% 1/16W 3216 8P4R
U	R6322	1-218-933-81	RES,SMD,22 5% 1/16W 1005	U	R9006	1-218-953-81	RES,SMD,1.0K 5% 1/16W 1005	U	RB3900	1-233-423-21	RES,SMD,RNET 47 5% 1/16W 3216 8P4R
U	R6325	1-216-833-91	RES,SMD,10K 5% 1/10W 1608	U	R9007	1-218-953-81	RES,SMD,1.0K 5% 1/16W 1005	U	RB3901	1-233-423-21	RES,SMD,RNET 47 5% 1/16W 3216 8P4R
U	R6337	1-216-864-91	CONDUCTOR,SMD,2A 100V 1608	U	R9008	1-218-953-81	RES,SMD,1.0K 5% 1/16W 1005	U	RB3902	1-233-423-21	RES,SMD,RNET 47 5% 1/16W 3216 8P4R
U	R6343	1-218-965-81	RES,SMD,10K 5% 1/16W 1005	U	R9009	1-218-961-81	RES,SMD,4.7K 5% 1/16W 1005	U	RB3903	1-233-423-21	RES,SMD,RNET 47 5% 1/16W 3216 8P4R
U	R6365	1-218-953-81	RES,SMD,1.0K 5% 1/16W 1005	U	R9010	1-208-911-81	RES,SMD,10K 0.5% 1/16W 1005	U	RB3904	1-233-423-21	RES,SMD,RNET 47 5% 1/16W 3216 8P4R
U	R6379	1-216-864-91	CONDUCTOR,SMD,2A 100V 1608	U	R9011	1-208-911-81	RES,SMD,10K 0.5% 1/16W 1005	U	RB3905	1-233-423-21	RES,SMD,RNET 47 5% 1/16W 3216 8P4R
U	R6399	1-208-860-81	RES,SMD,75 0.5% 1/16W 1005	U	R9012	1-245-369-91	RES,SMD,49.9 1% 1/16W 1608	U	RB3906	1-233-423-21	RES,SMD,RNET 47 5% 1/16W 3216 8P4R
U	R6401	1-218-965-81	RES,SMD,10K 5% 1/16W 1005	U	R9013	1-245-369-91	RES,SMD,49.9 1% 1/16W 1608	U	RB3907	1-233-423-21	RES,SMD,RNET 47 5% 1/16W 3216 8P4R
U	R6403	1-218-965-81	RES,SMD,10K 5% 1/16W 1005	U	R9014	1-245-369-91	RES,SMD,49.9 1% 1/16W 1608	U	RB4100	1-233-803-91	RES,SMD,RNET 1.5K 5% 1/16W 1608 4P2R
U	R6408	1-216-821-91</									

