

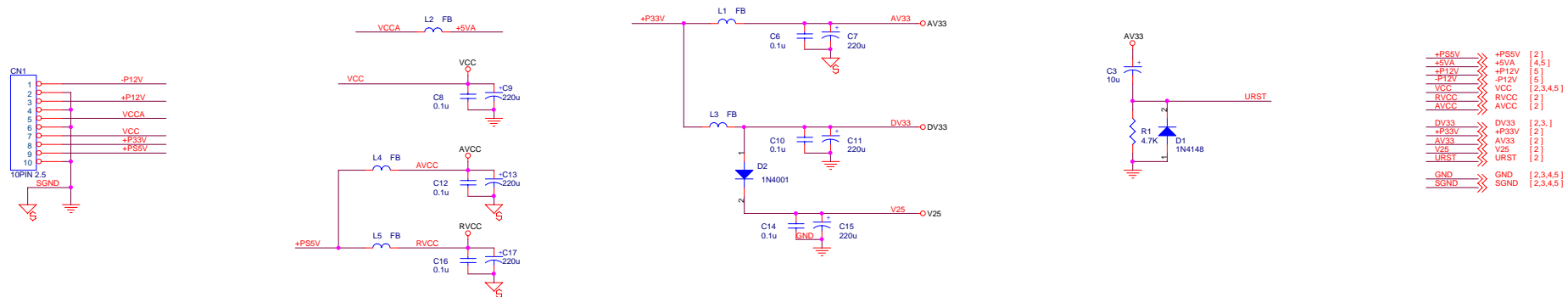
VTREK1379M6-11.1

MT1379E (LQFP216) DVD MP Board for Sanyo SF-HD6AV PUH

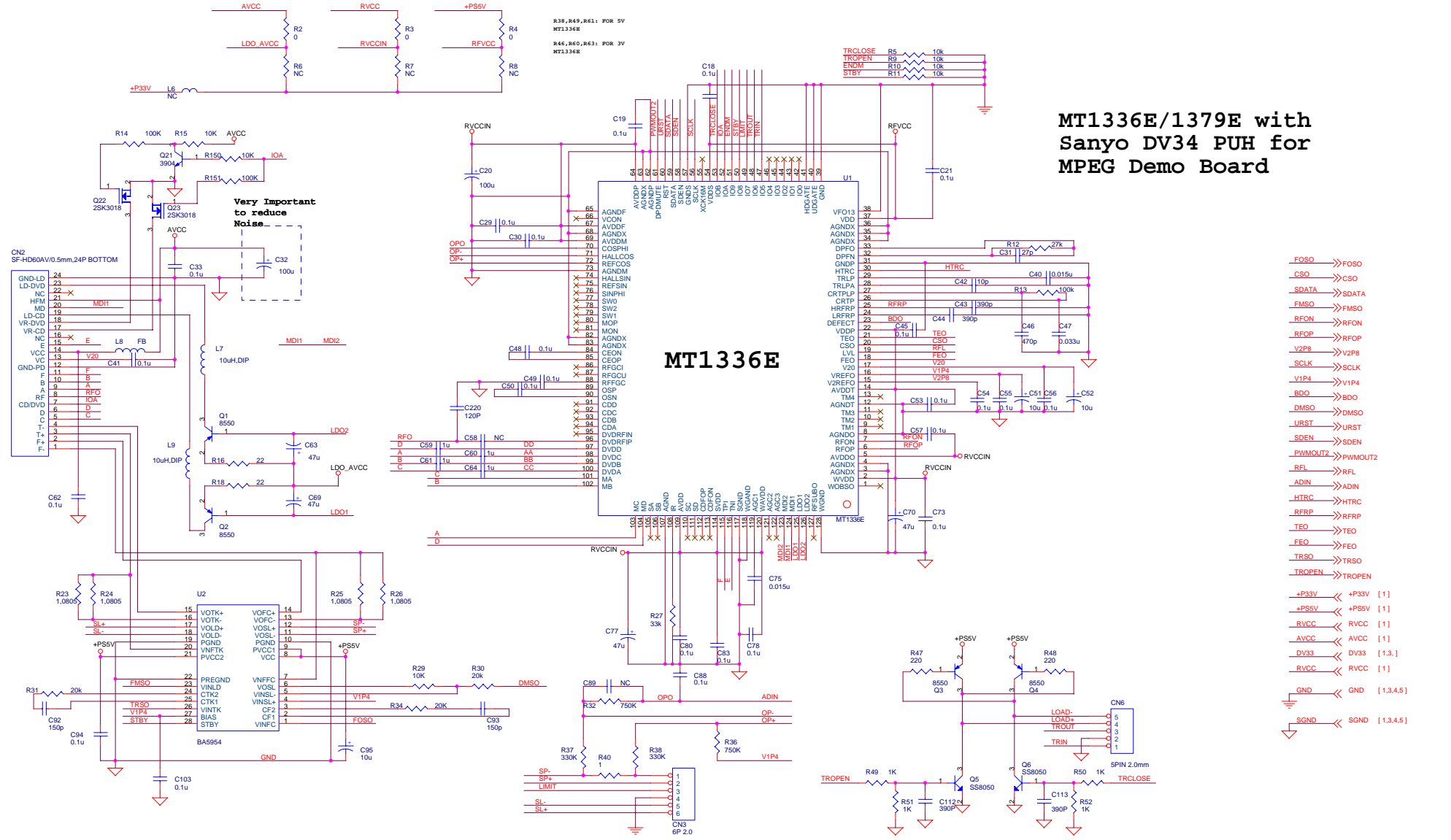
- |   |                                     |
|---|-------------------------------------|
| 1 | INDEX & POWER, RESET                |
| 2 | RF / SERVO - MT1336E                |
| 3 | MPEG - MT1379E                      |
| 4 | MEMORY - SDRAM, FLASH/EEPROM        |
| 5 | AUDIO - WM8746/CS4340, VIDEO FILTER |
| 6 | AUDIO FILTER, OUTPUT                |

NAME	TYPE	DEVICE
VCC	Digital 5V	SUPPLY
RVCC	Servo 5V	MT1336E
AVCC	RF 5V	PICKUP HEADER
V33	Digital 3.3V	SDRAM, Flash, VideoDAC
DV33	Digital 3.3V	MT1379E
AV33	Servo 3.3V	MT1379E
V25	Digital 2.5V	MT1379E
+5VA	Audio 5V	Audio DAC
+5VV	Video 5V	Video filter
+12V	Audio 12V	Audio filter

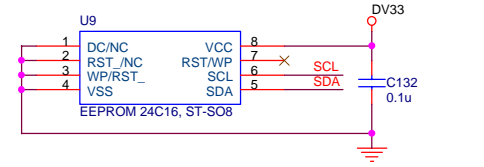
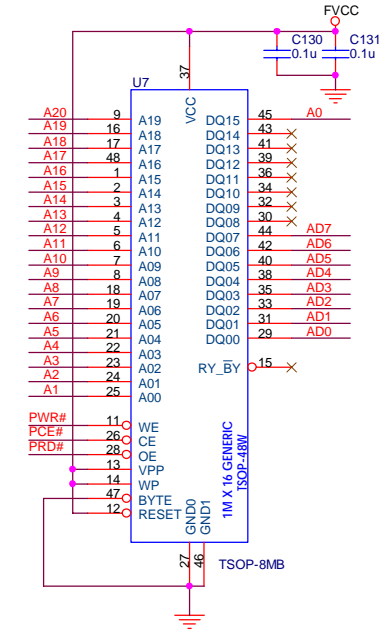
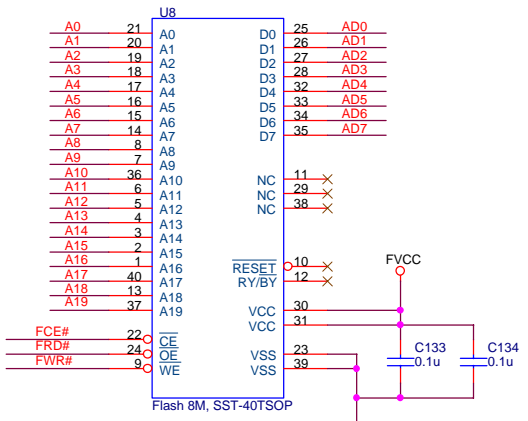
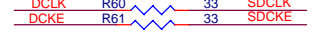
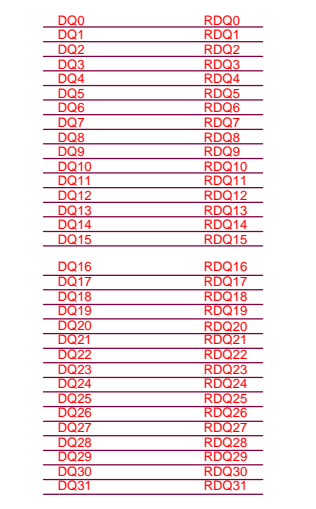
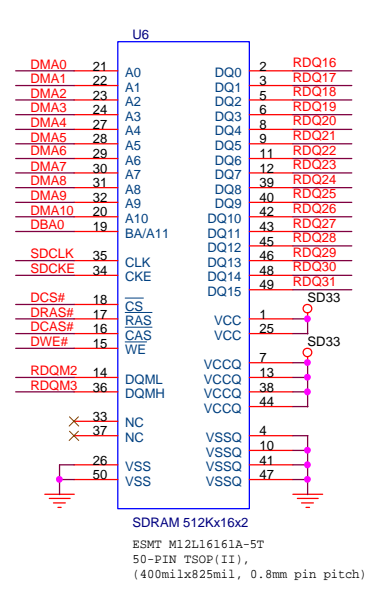
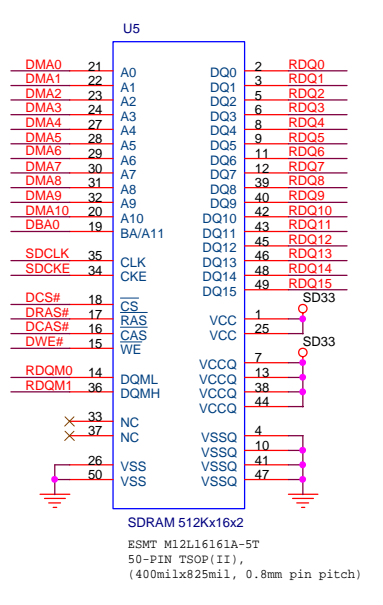
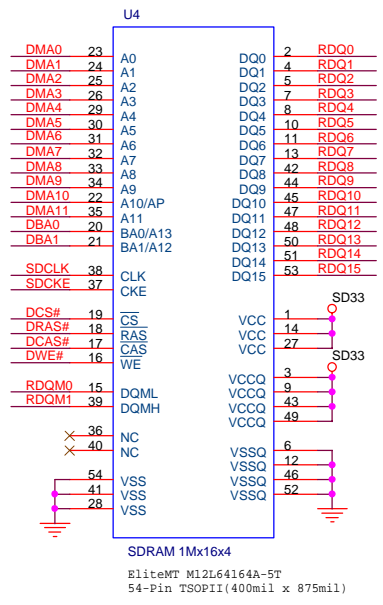
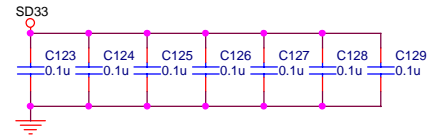
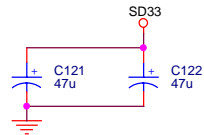
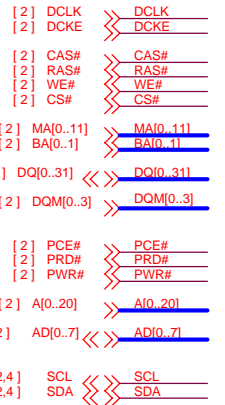
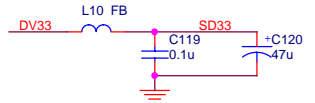
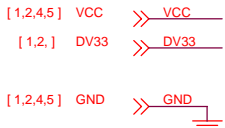

NAME	TYPE
GND	Digital Ground
SGND	Servo Analog Ground
AGND	Audio Ground
VGND	Video Ground



+P55V	>>>	AP55V	[2]
+5VA	>>>	+5VA	[4,5]
+P12V	>>>	+P12V	[5]
+P12V	>>>	+P12V	[5]
VCC	>>>	VCC	[2,3,4,5]
RVCC	>>>	RVCC	[2]
AVCC	>>>	AVCC	[4]
DV33	>>>	DV33	[2,3]
+P33V	>>>	+P33V	[2]
AV33	>>>	AV33	[2]
V25	>>>	V25	[2]
URST	>>>	URST	[2]
GND	>>>	GND	[2,3,4,5]
SGND	>>>	SGND	[2,3,4,5]



- FOSO >>> FOSO
- CSO >>> CSO
- SDATA >>> SDATA
- FMSO >>> FMSO
- RFO >>> RFO
- RFP >>> RFP
- V2P8 >>> V2P8
- SCLK >>> SCLK
- V1P4 >>> V1P4
- BDO >>> BDO
- DMSO >>> DMSO
- URST >>> URST
- SDEN >>> SDEN
- PWMOUT2 >>> PWMOUT2
- RFL >>> RFL
- ADIN >>> ADIN
- HTRC >>> HTRC
- RFRP >>> RFRP
- TEO >>> TEO
- FEO >>> FEO
- TRSO >>> TRSO
- TROPEN >>> TROPEN
- +P33V <<< +P33V [1]
- +P55V <<< +P55V [1]
- RVCC <<< RVCC [1]
- AVCC <<< AVCC [1]
- DV33 <<< DV33 [1,3,4]
- RVCC <<< RVCC [1]
- GND <<< GND [1,3,4,5]
- SGND <<< SGND [1,3,4,5]

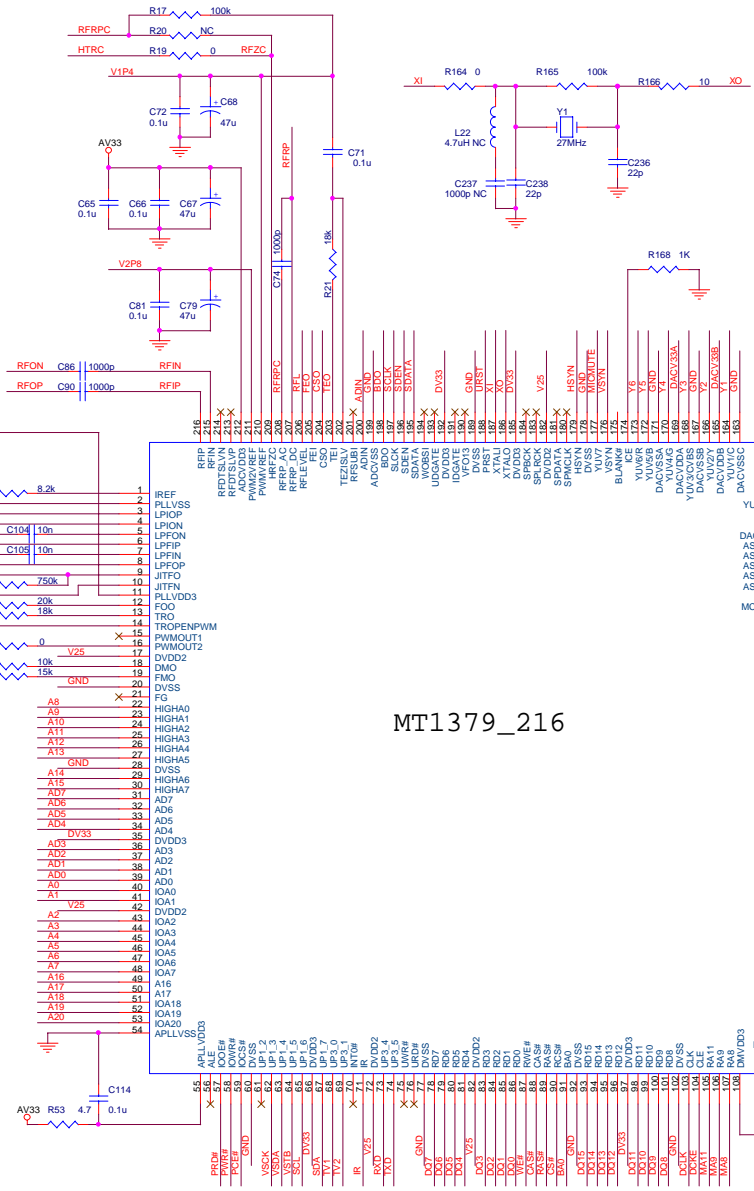
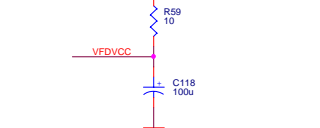
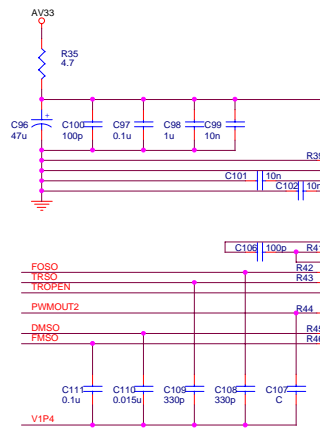
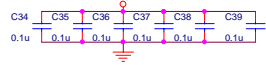
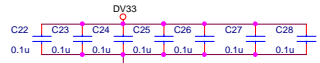
**MediaTek Incorporation**

Title: MT1369E MP BOARD (MP1369\_HTK\_V2.DSN)

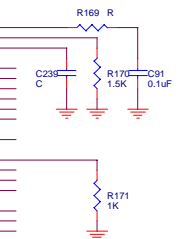
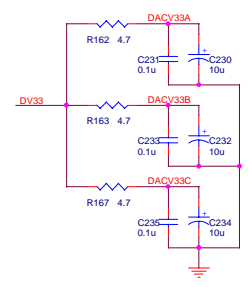
Size: B Document Number: FALSH & SDRAM & EEPROM Rev: 2

Date: Monday, December 02, 2002 Sheet: 3 of 5

- [2] FOSO >> FOSO
- [2] CS0 >> CS0
- [2] SDATA >> SDATA
- [2] FMS0 >> FMS0
- [2] RFON >> RFON
- [2] RFOP >> RFOP
- [2] V2P8 >> V2P8
- [2] SCLK >> SCLK
- [2] V1P4 >> V1P4
- [2] BDO >> BDO
- [2] DMS0 >> DMS0
- [2] URST >> URST
- [2] SDEN >> SDEN
- [2] PWMOUT2 >> PWMOUT2
- [2] RFL >> RFL
- [2] ADIN >> ADIN
- [2] HTRC >> HTRC
- [2] RFRP >> RFRP
- [2] TEO >> TEO
- [2] FEO >> FEO
- [2] TRSO >> TRSO
- [2] TROPEN >> TROPEN

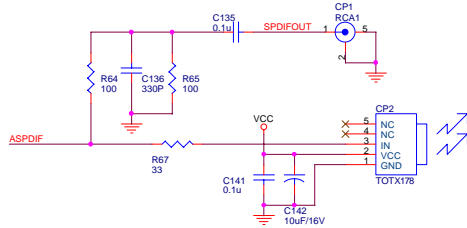
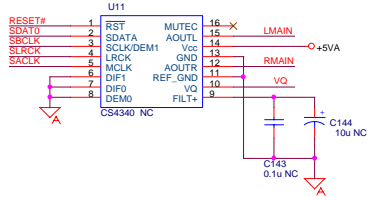
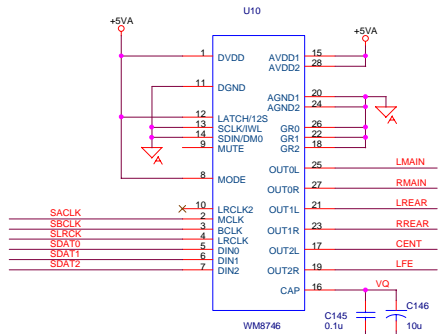
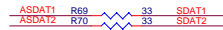
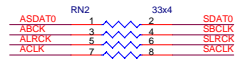
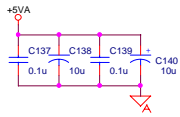


MT1379\_216



- +PSSV >> +PSSV [1]
- VCC >> VCC [1,3,4,5]
- RVCC >> RVCC [1]
- AVCC >> AVCC [1]
- AV33 >> AV33 [1]
- V25 >> V25 [1,1]
- DV33 >> DV33 [1,3,1]
- GND >> GND [1,3,4,5]
- SGND >> SGND [1,3,4,5]
- MUTE >> MUTE [4]
- MICMUTE >> MICMUTE [5]
- TV1 >> TV1 [4]
- TV2 >> TV2 [4]
- HSYN >> HSYN [5]
- VSYN >> VSYN [5]
- RESET# >> RESET# [5]
- URST << URST [1]
- Y1\_6I >> Y1\_6I [4]
- ASPDIF >> ASPDIF [5]
- ACLK >> ACLK [4]
- ALRCK >> ALRCK [4]
- ABCK >> ABCK [4]
- ASDAT0 >> ASDAT0 [4]
- ASDAT1 >> ASDAT1 [4]
- ASDAT2 >> ASDAT2 [4]
- A[0..20] >> A[0..20] [3]
- AD[0..7] >> AD[0..7] [3]
- PRD# >> PRD# [3]
- PWR# >> PWR# [3]
- PCE# >> PCE# [3]
- MA[0..11] >> MA[0..11] [3]
- BA[0..1] >> BA[0..1] [3]
- DO[0..31] >> DO[0..31] [3]
- DOM[0..3] >> DOM[0..3] [3]
- RAS# >> RAS# [3]
- CAS# >> CAS# [3]
- CS# >> CS# [3]
- WE# >> WE# [3]
- DCLK >> DCLK [3]
- DCKE >> DCKE [3]
- SCI >> SCI [3,4]
- SDA >> SDA [3,4]

[1,2,3,5] VCC >> VCC  
 [1.5] +P12V >> +P12V  
 [1.5] +5VA >> +5VA  
 [2] ASPDIF >> ASPDIF  
 [1,2,3,5] GND >> GND



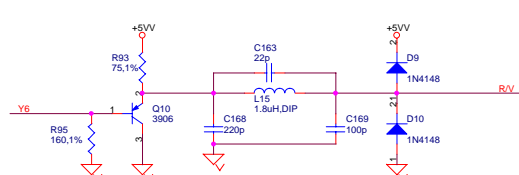
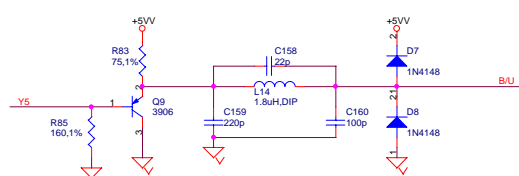
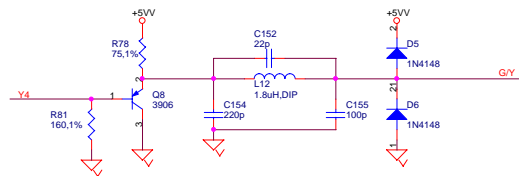
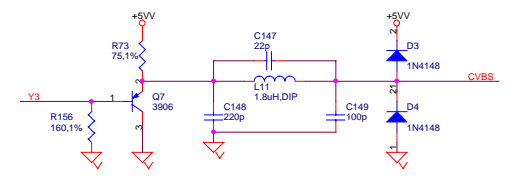
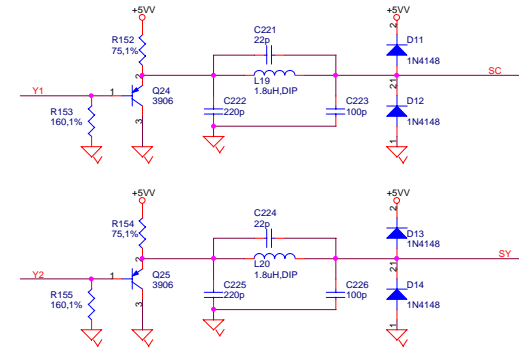
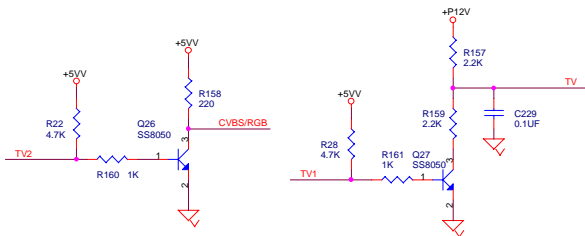
RESET# >> RESET#

[2] TV1 >> TV1  
 [2] TV2 >> TV2

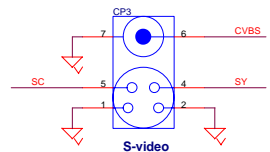
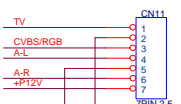
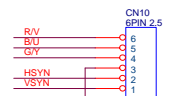
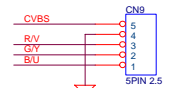
HSYN >> HSYN  
 VSYN >> VSYN

[2] ACLK >> ACLK  
 [2] ABCK >> ABCK  
 [2] ALRCK >> ALRCK  
 [2] ASDAT0 >> ASDAT0  
 [2] ASDAT1 >> ASDAT1  
 [2] ASDAT2 >> ASDAT2

[2] Y1..6 >> Y1..6



A-L << A-L [5]  
 A-R << A-R [5]  
 RMAIN << RMAIN [5]  
 LMAIN << LMAIN [5]  
 RREAR << RREAR [5]  
 LREAR << LREAR [5]  
 LFE << LFE [5]  
 CENT << CENT [5]  
 AGND >> AGND [1,2,3,5]



- [4] A-L << A-L
- [4] A-R << A-R
- [1,4] +5VA << +5VA
- [1] -P12V << -P12V
- [1] +P12V << +P12V
- [4] RMAIN << RMAIN
- [4] LMAIN << LMAIN
- [4] RREAR << RREAR
- [4] LREAR << LREAR
- [4] LFE << LFE
- [4] CENT << CENT
- [1,2,3,4] AGND << AGND
- [1,2,3,4] GND << GND

