

HISTORY INFORMATION FOR THE FOLLOWING MANUAL:

SERVICE MANUAL

AZ1-H Chassis

ORIGINAL MANUAL ISSUE DATE: 6/2010

Version	Date	Subject
1.0	6/4/2010	No revisions or updates
2.0	6/9/2010	Removed HLR Board from Diagnostic Test Indicator table. Replaced page 9.
3.0	6/22/2010	Added PN for Stand Assembly for XBR-60LX900 model. Added Wire Dressing information. Reissue entire manual.

LCD Digital Color TV

SONY®

SERVICE MANUAL

AZ1-H Chassis

LCD Digital Color TV

SONY®

MODEL LIST

<i>MODEL</i>	<i>COMMANDER</i>	<i>DESTINATION</i>
XBR-40LX900	<i>RM-YD051</i>	<i>CND/MX</i>
XBR-46LX900	<i>RM-YD051</i>	<i>CND/MX</i>
XBR-52LX900	<i>RM-YD036</i>	<i>US</i>
XBR-52LX900	<i>RM-YD051</i>	<i>CND/MX</i>
XBR-52LX900	<i>RM-YD051</i>	<i>LATIN AMERICA</i>

<i>MODEL</i>	<i>COMMANDER</i>	<i>DESTINATION</i>
XBR-60LX900	<i>RM-YD036</i>	<i>US</i>
XBR-60LX900	<i>RM-YD051</i>	<i>CND/MX</i>
XBR-60LX900	<i>RM-YD051</i>	<i>LATIN AMERICA</i>

TABLE OF CONTENTS

Specifications	1
Warnings and Cautions	3
Safety-Related Warning	6
Safety Check-Out	7
Self Diagnosis Functions	9
SEC 1. Disassembly/Part Number Information	13
1-1. Table-Top Stand Assembly Removal.....	13
1-2. Rear Cover, Under Cover, Vesa Brackets, AC Inlet, Switch Unit Removal.....	14
1-2-1. XBR-40LX900/46LX900/52LX900 Only.....	14
1-2-2. XBR-60LX900 Only.....	15
1-3. Speaker Box Assembly, HEM Board, Camera Module and HLR Board Removal.....	16
1-4. GE5/GE4B/GE4A (Power) Boards, BUHS Board, WIFI Antennas and Wireless LAN Card Removal.....	17
1-5. Horizontal Frames, Vertical Frames, Corner Joints and Bottom Cabinet Assembly Removal.....	18
1-6. Cleaning the LCD Panel.....	19
1-7. Screw Legend.....	19
1-8. Connectors.....	19
1-9. Accessories and Packing.....	20
1-10. Miscellaneous.....	20
1-11. Remote Commander.....	20

TABLE OF CONTENTS

1-12. Wire Dressing	21
1-12-1. Overall Wire Dressing	21
1-12-2. BUHS Board Wire Dressing	21
1-12-3. GE5/GE4B/GE4A (POWER) Board Wire Dressing.....	21
1-12-4. TCON Board Wire Dressing.....	21
SEC 2. Service Adjustments	22
2-1. Accessing Service Adjustment Mode	22
2-1-1. Viewing the Service Menus.....	23
2-1-2. Using the Remote Commander to View or Change Service Data	24
2-2. Adjustments After Replacing the BUHS Board or LCD Panel	24
2-2-1. Updating the Software	24
2-2-2. Selecting the Model	25
2-2-3. Setting the Destination.....	26
2-2-4. Verifying the Model and Panel Information	26
2-2-5. Reconnecting All Cables	27
2-3. White Balance Adjustments.....	28
2-4. Change the Emitter Output Level	29
2-5. Resetting the TV to Factory Condition.....	29
2-5-1. Resetting the TV to Factory Condition Using Service Mode.....	29
SEC 3. Diagrams	30
3-1. Circuit Boards Location	30
3-2. Block Diagram	31

SPECIFICATIONS

Model name XBR-	60LX900	52LX900	46LX900	40LX900
System				
Television system	NTSC: American TV standard ATSC (8VSB terrestrial): ATSC compliant 8VSB QAM on cable: ANSI/SCTE 07 2000 (Does not include CableCARD functionality)			
Channel coverage	Analog terrestrial: 2 - 69 / Digital terrestrial: 2 - 69 Analog Cable: 1 - 135 / Digital Cable: 1 - 135			
Panel system	LCD (Liquid Crystal Display) Panel			
Speaker output	10 W + 10 W			
Input/Output jacks				
CABLE/ANTENNA	75-ohm external terminal for RF inputs			
VIDEO IN 1/2	VIDEO / AUDIO			
COMPONENT IN	YPBPR (Component Video) / Signal format: 480i, 480p, 720p, 1080i, 1080p AUDIO			
HDMI IN 1/2/3/4	HDMI: Video: 480i, 480p, 720p, 720/24p, 1080i, 1080p, 1080/24p Audio: Two channel linear PCM 32, 44.1 and 48 kHz, 16, 20 and 24 bits, Dolby Digital AUDIO (HDMI IN 2)			
AUDIO OUT	500 mVrms (typical)			
DIGITAL AUDIO OUT (OPTICAL)	PCM/Dolby Digital optical signal			
PC IN	D-sub 15-pin, analog RGB			
PC/HDMI 2 AUDIO IN	Stereo mini jack			
LAN	10BASE-T/100BASE-TX connector (Connection speed may differ depending on the network environment. 10BASE-T/100BASE-TX communication rate and communication quality are not guaranteed for this TV.)* ¹			
USB/DLNA	Refer to the i-Manual for supported format.			

*1 For LAN connections, use a Category 7 10BASE-T/100BASE-TX cable (not supplied).

Licensing Information

Macintosh is a trademark of Apple Inc., registered in the U.S. and other countries.

HDMI, the HDMI Logo, and High-Definition Multimedia Interface are trademarks or registered trademarks of HDMI Licensing LLC in the United States and other countries.

Ferguson Patent Properties, LLC:
U.S. Patent No. 5,717,422
U.S. Patent No. 6,816,141

Manufactured under license from Dolby Laboratories. Dolby and the double-D symbol are trademarks of Dolby Laboratories.

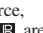
In the United States, TV Guide and TV Guide On Screen are registered trademarks of TV Guide Entertainment Group, Inc. and/or its subsidiaries or affiliates, and are used under a license by Gemstar-TV Guide International, Inc. and/or its subsidiaries. In Canada, TV Guide is a registered mark of Transcontinental Inc., and is used under a license by Gemstar-TV Guide International, Inc. and/or its subsidiaries.

The TV Guide On Screen system is manufactured under license from Gemstar-TV Guide International, Inc. and/or its subsidiaries.

The TV Guide On Screen system is protected by one or more of the following United States patents 6,498,895; 6,850,693; 6,396,546; 5,940,073; 6,239,794 to Gemstar-TV Guide International, Inc. and/or its subsidiaries.

Gemstar-TV Guide International, Inc. and/or its related affiliates are not in any way liable for the accuracy or availability of the program schedule information or other data in the TV Guide On Screen system and cannot guarantee service availability in your area. In no event shall Gemstar-TV Guide International, Inc. and/or its related affiliates be liable for any damages in connection with the accuracy or availability of the program schedule information or other data in the TV Guide On Screen system.

Blu-ray Disc is a trademark.

“BRAVIA” and BRAVIA, S-Force, Motionflow, BRAVIA Sync, and  are trademarks or registered marks of Sony Corporation.

“XMB™” and “xross media bar” are trademarks of Sony Corporation and Sony Computer Entertainment Inc.

“PlayStation” is a registered trademark and “PS3” is a trademark of Sony Computer Entertainment Inc.

DLNA®, the DLNA Logo and DLNA CERTIFIED® are trademarks, service marks, or certification marks of the Digital Living Network Alliance.

“FACE DETECTION” logo is trademark of Sony Corporation.



Your BRAVIA TV is ENERGY STAR® qualified in the “Home” mode.

It meets strict energy efficiency guidelines set by the U.S. Environmental Protection Agency and Department of Energy. ENERGY STAR is a joint program of these government agencies, designed to promote energy efficient products and practices.



SPECIFICATIONS

Model name XBR-	60LX900	52LX900	46LX900	40LX900	
Power and others					
Power requirement	110-240 V AC, 50/60 Hz (U.S.A./Canada 120 V AC, 60 Hz)				
Power consumption in use	228 W	185 W	173 W	145 W	
in DAM*2	25 W	20 W			
	(You may hear a clicking noise during the download but this is normal.)				
in standby	Less than 0.12 W with 120 V AC and less than 0.2 W with 240 V AC				
Screen size (inches measured diagonally)	60 inches	52 inches	46 inches	40 inches	
Display resolution	1,920 dots (horizontal) × 1,080 lines (vertical)				
Speaker	34 × 100				
Full range with speaker box (2)	1 3/8 × 4				
Dimensions with stand	(mm)	1,440 × 938 × 380	1,261 × 838 × 400	1,127 × 761 × 320	994 × 686 × 290
	(inches)	56 3/4 × 37 × 15	46 3/4 × 33 × 15 3/4	44 3/8 × 30 × 12 5/8	39 1/4 × 27 1/8 × 11 1/2
without stand	(mm)	1,440 × 906 × 64	1,261 × 804 × 64	1,127 × 727 × 64	994 × 652 × 64
	(inches)	56 3/4 × 35 3/4 × 2 5/8	46 3/4 × 31 3/4 × 2 5/8	44 3/8 × 28 5/8 × 2 5/8	39 1/4 × 25 3/4 × 2 5/8
wall-mount hole pattern (mm)	400 × 300		300 × 300		
wall-mount screw size (mm)	M6 (length: refer to diagram on page 15.)				
Mass	with stand (kg)/(lb.)	49.8 / 109.7	36.2 / 79.8	28.4 / 62.6	23.7 / 52.3
	without stand (kg)/(lb.)	42.8 / 94.3	30.2 / 66.6	24.6 / 54.2	20.3 / 44.8
Supplied accessories	See "Checking the accessories"				
Optional accessories	Connecting cables / Support Belt Kit / Wall-Mount Bracket / Wall-Hanging Bracket / 3D Glasses (TDG-BR100 / BR50)				

*2 Download Acquisition Mode (DAM) is used for software updates and/or collecting data for TV Guide On Screen.

- Optional accessories availability depends on its stock.
- Design and specifications are subject to change without notice.

3D Glasses TDG-BR100	
Weight	2.7 oz. (77 g (including battery))
Battery type	CR2032/3V
Battery life	Up to 100 hours of battery life The battery life will vary based on usage patterns, environmental condition (temperature) and the battery brand(s).
Dimensions (Approx.) (w × h × d)	7 1/8 × 1 5/8 × 7 1/4 inches (179 × 40 × 183 mm)

Checking the accessories

AC power cord (1)

Remote control (1)*1

Size AAA batteries (2)

Table-Top Stand (1)*2

(except XBR-60LX900)

Fixing screws for Table-Top Stand

(M5 × 16) (4) (except XBR-60LX900)

Assembling screws for Table-Top Stand

(M5 × 16) (4) (XBR-40LX900 only)

Bottom cover (1)*3

Stand rear cover (1)*4

Black spacers (4)*5

(XBR-52/46/40LX900 only)

Silver spacers (4)*5

(XBR-60LX900 only)

Screws (M6 × 20) (4)*5

(XBR-60LX900 only)

3D Glasses (battery included) (2)

Pouch for 3D Glasses (2)

*1 Please refer to the model name printed on the remote control.

*2 XBR-40LX900 requires assembling.

Refer to other leaflet to assemble the Table-Top Stand.

*3 For XBR-60LX900, the bottom cover is factory-attached to the TV.

*4 For XBR-60LX900, the stand rear cover is factory-attached to the Table-Top Stand.

*5 These screws and spacers are required when installing an optional Wall-Mount Bracket. You must use these screws instead of the ones provided with the bracket for safety reasons. Be sure to keep them in a safe place until you are ready to use the Wall-Mount Bracket. See page 23 for the recommended Wall-Mount Bracket for your TV.

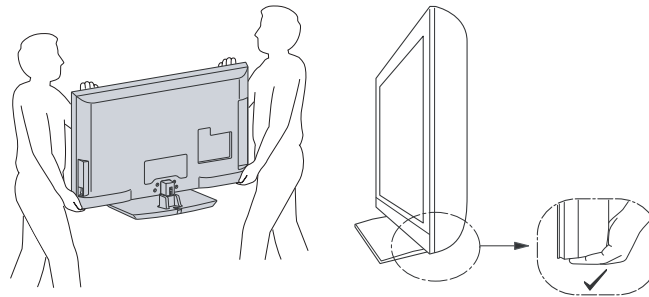
WARNINGS AND CAUTIONS

CAUTION

These servicing instructions are for use by qualified service personnel only. To reduce the risk of electric shock, do not perform any servicing other than that contained in the operating instructions unless you are qualified to do so.

CARRYING THE TV


- Carry the TV with the adequate number of people; larger size TVs require two or more people.
- Correct hand placement while carrying the TV is very important for safety and to avoid damage.



WARNING!!

An isolation transformer should be used during any service to avoid possible shock hazard, because of live chassis. The chassis of this receiver is directly connected to the AC power line.

SAFETY-RELATED COMPONENT WARNING!!

Components identified by shading and  mark on the exploded views are critical for safe operation. Replace all components with Sony parts whose part numbers appear as shown in this manual or in supplements published by Sony. It is essential that all critical parts be replaced only with the part number specified in this manual to prevent electric shock, fire, or other hazard. Circuit adjustments that are critical for safe operation are identified in this manual. Follow these procedures whenever critical components are replaced or improper operation is suspected.

NOTE: Do not modify the original design without obtaining written permission from the manufacturer or you will void the original parts and labor guarantee.

ABOUT THE BATTERY OF THE 3D GLASSES

Replace only with the same or equivalent type of batteries. Using incorrect replacement batteries can lead to an explosion.

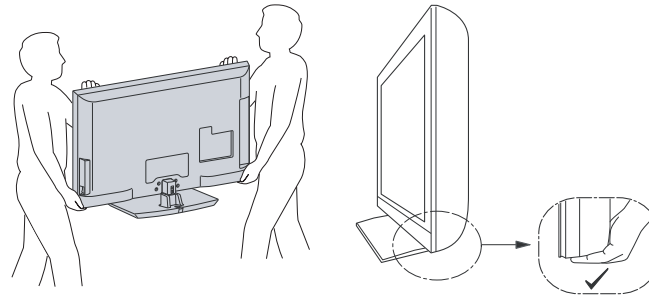
WARNING AND CAUTIONS

ATTENTION!!

Ces instructions de service sont à l'usage du personnel de service qualifié seulement. Pour prévenir le risque de choc électrique, ne pas faire l'entretien autre que celui contenu dans le Mode d'emploi à moins que vous soyez qualifié faire ainsi.

POUR TRANSPORTER LE TÉLÉVISEUR


- Transportez le téléviseur avec le nombre de personnes approprié ; un téléviseur de grande taille doit être transporté par au moins deux personnes.
- Lors du transport du téléviseur, l'emplacement des mains est très important pour votre sécurité, ainsi que pour éviter de causer des dommages.



ALERTE!!

Afin d'éviter tout risque d'électrocution provenant d'un châssis sous tension, un transformateur d'isolement doit être utilisé lors de tout dépannage. Le châssis de ce récepteur est directement raccordé à l'alimentation du secteur.

ATTENTION AUX COMPOSANTS RELATIFS A LA SECURITE!!

Les composants identifiés par une trame et par une marque  sur les schémas de principe, les vues explosées et les listes de pièces sont d'une importance critique pour la sécurité du fonctionnement. Ne les remplacer que par des composants Sony dont le numéro de pièce est indiqué dans le présent manuel ou dans des suppléments publiés par Sony. Les réglages de circuit dont l'importance est critique pour la sécurité du fonctionnement sont identifiés dans le présent manuel. Suivre ces procédures lors de chaque remplacement de composants critiques, ou lorsqu'un mauvais fonctionnement suspecte.

AU SUJET DE LA BATTERIE DES VERRES 3D

Remplacez seulement par la même chose ou le type équivalent de batteries. Utilisant le remplacement incorrect les batteries peuvent mener à une explosion.

WARNING AND CAUTIONS

HANDLING THE GLASS ASSEMBLY

Use the following precautionary guidelines when replacing the Glass Assembly to avoid material degradation or screen coating degradation, and ensure that dust, dirt, or fingerprints are not left between the glass and the LCD panel.

- ☑ Replace the Glass Assembly in a brightly lit and clean room.
- ☑ Place the replacement Glass Assembly on a dark cloth to make it easier to see dust and dirt particles.
- ☑ Wear anti static gloves to avoid leaving finger prints on the glass.
- ☑ Use a dry, soft MicroFiber cloth, such as a lint free polishing cloth, to gently wipe the glass to remove any dust or dirt particles.
- ☑ If the glass needs additional cleaning, slightly moisten the cloth with a diluted mild soap or mild detergent solution, or use a compressed air duster (spray can type).
- ☑ After replacing the Glass Assembly, verify there are no dark spots or finger prints visible on the screen.

CAUTION

- ⊘ **Do Not** use paper towels, any type of abrasive pad, rags, rubber or vinyl materials to clean the screen. Using these materials could easily scratch the screen which may result in permanent damage.
- ⊘ **Do Not** use any cleaning product containing alkaline/acid cleaner, scouring powder, or volatile solvent, such as alcohol, ammonia, benzene, thinner or insecticide. Using any of these harsh cleaners may result in permanent damage to the screen.
- ⊘ **Do Not** spray water or detergent directly onto the TV screen . If liquid drips into the bottom of the screen it may cause a failure.

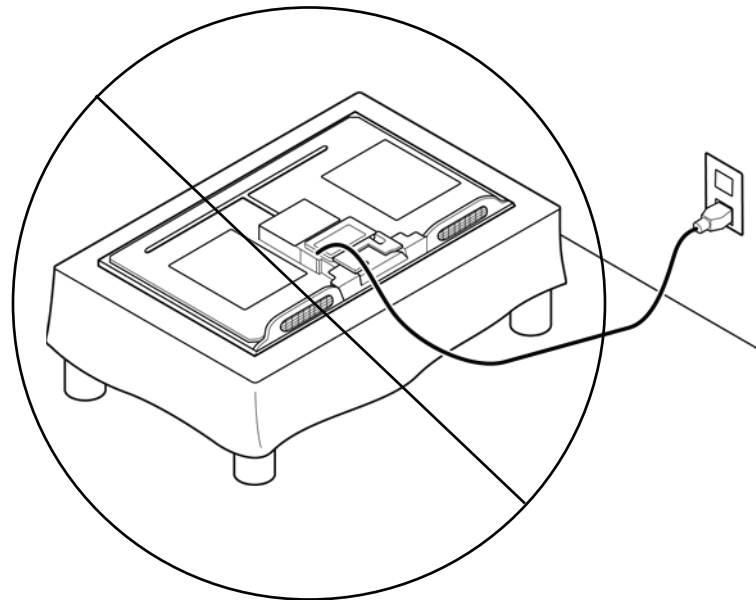
SAFETY-RELATED WARNING

USE CAUTION WHEN HANDLING THE LCD PANEL

When repairing the LCD panel, be sure you are grounded by using a wrist band.

When installing the LCD panel on a wall, the LCD panel must be secured using the 4 mounting holes on the rear cover.

- 1) Do not press on the panel or frame edge to avoid the risk of electric shock.
- 2) Do not scratch or press on the panel with any sharp objects.
- 3) Do not leave the module in high temperatures or in areas of high humidity for an extended period of time.
- 4) Do not expose the LCD panel to direct sunlight.
- 5) Avoid contact with water. It may cause a short circuit within the module.
- 6) Disconnect the AC power when replacing the backlight or inverter circuit.
(High voltage occurs at the inverter circuit at 650Vrms.)
- 7) Always clean the LCD panel with a soft cloth material.
- 8) Use care when handling the wires or connectors of the inverter circuit. Damaging the wires may cause a short.
- 9) Protect the panel from ESD to avoid damaging the electronic circuit (C-MOS).
- 10) During the repair, DO NOT leave the Power On for more than 1 hour while the TV is face down on a cloth.



SAFETY CHECK-OUT

After correcting the original service problem, perform the following safety checks before releasing the set to the customer:

1. Check the area of your repair for unsoldered or poorly soldered connections. Check the entire board surface for solder splashes and bridges.
2. Check the interboard wiring to ensure that no wires are “pinched” or touching high-wattage resistors.
3. Check that all control knobs, shields, covers, ground straps, and mounting hardware have been replaced. Be absolutely certain that you have replaced all the insulators.
4. Look for unauthorized replacement parts, particularly transistors, that were installed during a previous repair. Point them out to the customer and recommend their replacement.
5. Look for parts which, though functioning, show obvious signs of deterioration. Point them out to the customer and recommend their replacement.
6. Check the line cords for cracks and abrasion. Recommend the replacement of any such line cord to the customer.
7. Check the antenna terminals, metal trim, “metallized” knobs, screws, and all other exposed metal parts for AC leakage. Check leakage as described below.

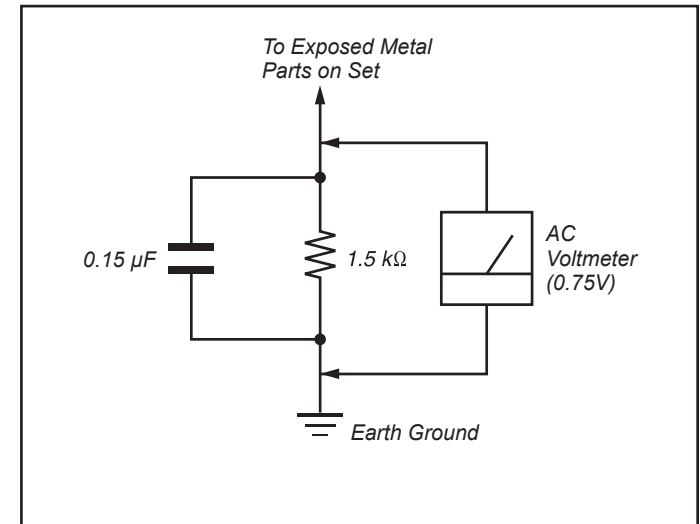


Figure A. Using an AC voltmeter to check AC leakage.

LEAKAGE TEST

The AC leakage from any exposed metal part to earth ground and from all exposed metal parts to any exposed metal part having a return to chassis, must not exceed 0.5 mA (500 microamperes). Leakage current can be measured by any one of three methods.

1. A commercial leakage tester, such as the Simpson 229 or RCA WT-540A. Follow the manufacturers' instructions to use these instructions.
2. A battery-operated AC milliampmeter. The Data Precision 245 digital multimeter is suitable for this job.
3. Measuring the voltage drop across a resistor by means of a VOM or battery-operated AC voltmeter. The "limit" indication is 0.75 V, so analog meters must have an accurate low voltage scale.

The Simpson's 250 and Sanwa SH-63TRD are examples of passive VOMs that are suitable. Nearly all battery-operated digital multimeters that have a 2 VAC range are suitable (see Figure A).

HOW TO FIND A GOOD EARTH GROUND

A cold-water pipe is a guaranteed earth ground; the cover-plate retaining screw on most AC outlet boxes is also at earth ground.

If the retaining screw is to be used as your earth ground, verify that it is at ground by measuring the resistance between it and a cold-water pipe with an ohmmeter. The reading should be zero ohms.

If a cold-water pipe is not accessible, connect a 60-to 100-watt trouble-light (not a neon lamp) between the hot side of the receptacle and the retaining screw. Try both slots, if necessary, to locate the hot side on the line; the lamp should light at normal brilliance if the screw is at ground potential (see Figure B).

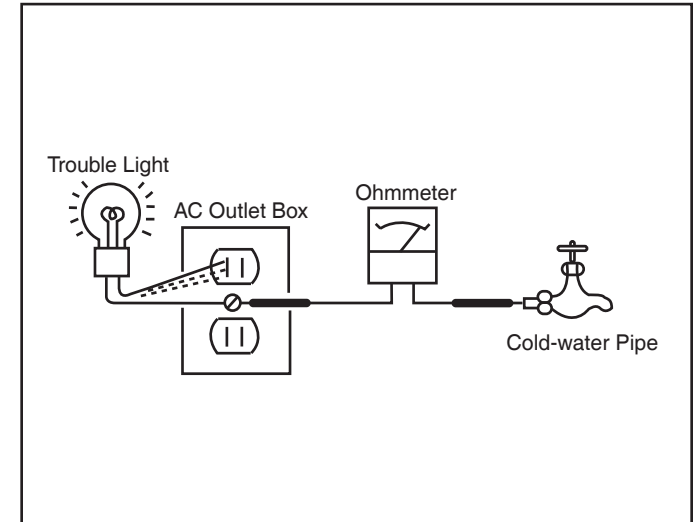


Figure B. Checking for earth ground.

SELF DIAGNOSIS FUNCTIONS



SELF DIAGNOSIS FUNCTION

The units in this manual contain a self-diagnostic function. If an error occurs, the STANDBY LED will automatically begin to flash. The number of times the LED flashes translates to a probable source of the problem. A definition of the STANDBY LED flash indicators is listed in the instruction manual for the user's knowledge and reference. If an error symptom cannot be reproduced, the remote commander can be used to review the failure occurrence data stored in memory to reveal past problems and how often these problems occur.

DIAGNOSTIC TEST INDICATORS

When an error occurs, the STANDBY LED will flash a set number of times to indicate the possible cause of the problem. If there is more than one error, the LED will identify the first of the problem areas.

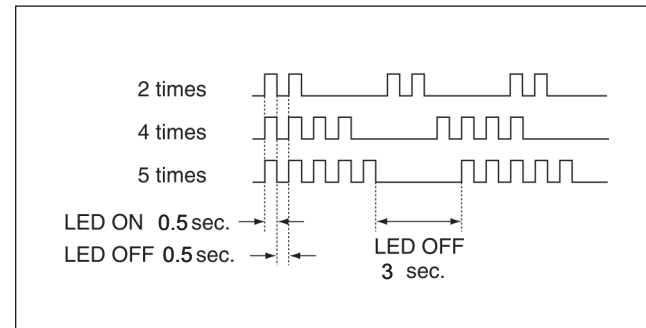
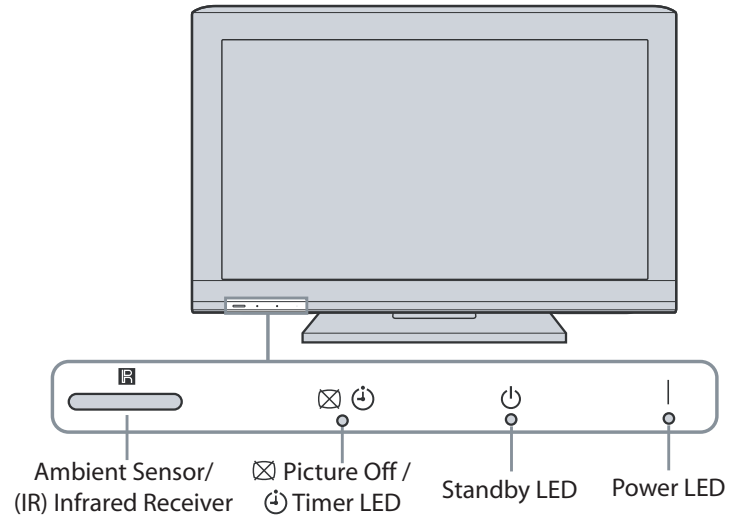
Result for all of the following diagnostic items are displayed on screen.

If the screen displays a "0", no error has occurred .

Diagnostic Item	Diagnostic Item Description	Number of times Standby LED blinks	Possible Location
RGB_SEN	RGB Sensor ACK Error	NA	NA
MAIN_POWER	Main Power Over Voltage Protection	2	GE4B (Power) Board (XBR-46LX900/52LX900 Only) GE4A (Power) Board (XBR-60LX900 Only) GE5 (Power) Board (XBR-40LX900 Only) BUHS Board
DC_ALERT	DC Alert	3	BUHS Board
DTT-WDT	DTT Error		GE4B (Power) Board (XBR-46LX900/52LX900 Only) GE4A (Power) Board (XBR-60LX900 Only) GE5 (Power) Board (XBR-40LX900 Only)
AUD_PROT	Audio Error Detection		
BALANCER	Panel Balancer Error	4	BUHS Board
TCON_ERR	TCON Error	5	LCD Panel
HFR_ERR	HFR Error		TCON Control MT Board
P_ID_ERR	Panel ID NVM Error		BUHS Board
BACKLITE	Backlight Error	6	BUHS Board
TEMP_ERR	Temperature Error	7	BUHS Board
FAN_ERR	Fan Error (Not Detected; Display Only)	NA	NA

SELF DIAGNOSIS FUNCTIONS

STANDBY LED FLASH COUNT



SELF DIAGNOSIS FUNCTIONS

VIEWING THE SELF CHECK DIAGNOSTIC LIST

For errors with symptoms such as “power sometimes shuts off” or “screen sometimes goes out” that cannot be confirmed, it is possible to bring up past occurrences of a failure for confirmation on the Self Check diagnostic screen:

1. TV must be in standby mode. (Power off).
2. Press the following buttons on the Remote Commander within a second of each other:

DISPLAY → Channel 5 → Volume - → POWER.

↑ * NOTE: This differs from accessing Service Adjustments Mode (Volume +)

The screenshot shows the 'SELF CHECK' menu with the following items and their corresponding error counts:

Item	Error Count
000 RGB_SEN	00
002 MAIN_POWE	0501210811 0412311234 0311111825 00
003 DC_ALERT1	00
003 AUD_PROT	00
003 DTT_WDT	00
004 BALANCER	00
005 HFR_ERR	00
005 TCON_ERR	00
005 P_ID_ERR	00
006 BACKLITE	00
007 TEMP_ERR	00
007 FAN_ERR	00
010 RESERVED	00
011 RESERVED	00

At the bottom of the screen, three additional values are displayed:

- 12345-00333-06789

Callouts from the right side of the image point to the following fields:

- StandBy LED Flash Count
- Diagnostic Item
- Error history (Most recent time the failure occurred)
- Error history (Failure time before the last occurrence)
- Error history (Failure time before the 2nd to last occurrence)
- Error Count (00-99)
- Panel operation time by hour (MAX:65535)
- Boot count (MAX:65535)
- Total operation time by hour (MAX:65535)

SELF DIAGNOSIS FUNCTIONS

CLEARING THE SELF CHECK DIAGNOSTIC LIST

Since the diagnostic results displayed on the screen are not automatically cleared, always check the self-diagnostic screen after you have completed the repairs to be sure you have cleared the result display to "0".

1. To clear the Error history and Error count: Press the Channel **8** → Channel **0**.
2. To clear the Panel operation time: Press the Channel **7** → Channel **0**.

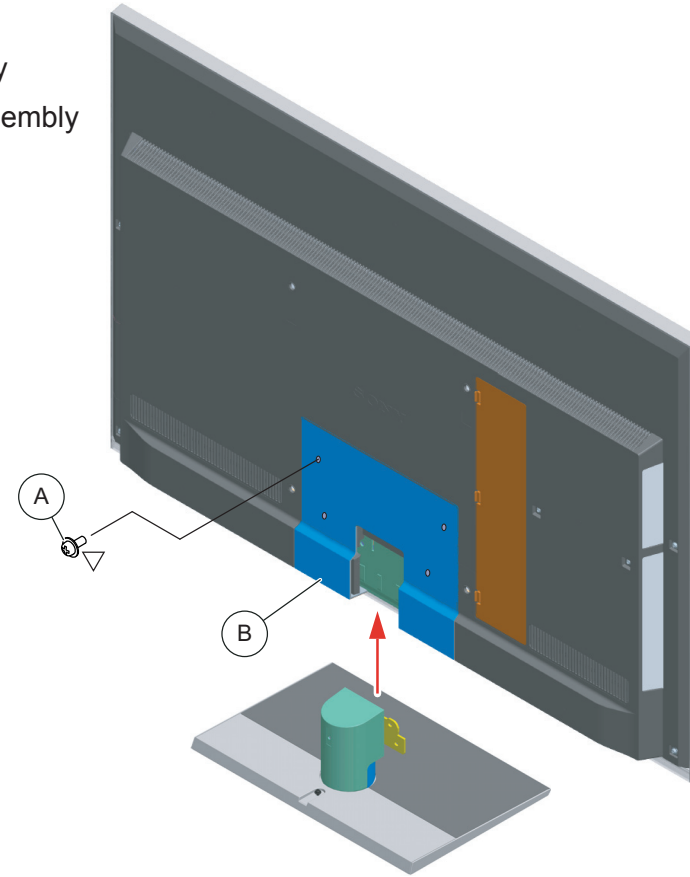
EXITING THE SELF CHECK DIAGNOSTIC SCREEN

1. To exit the Self Diagnostic screen, turn off the power to the TV by pressing the POWER button on the remote or the POWER button on the TV.

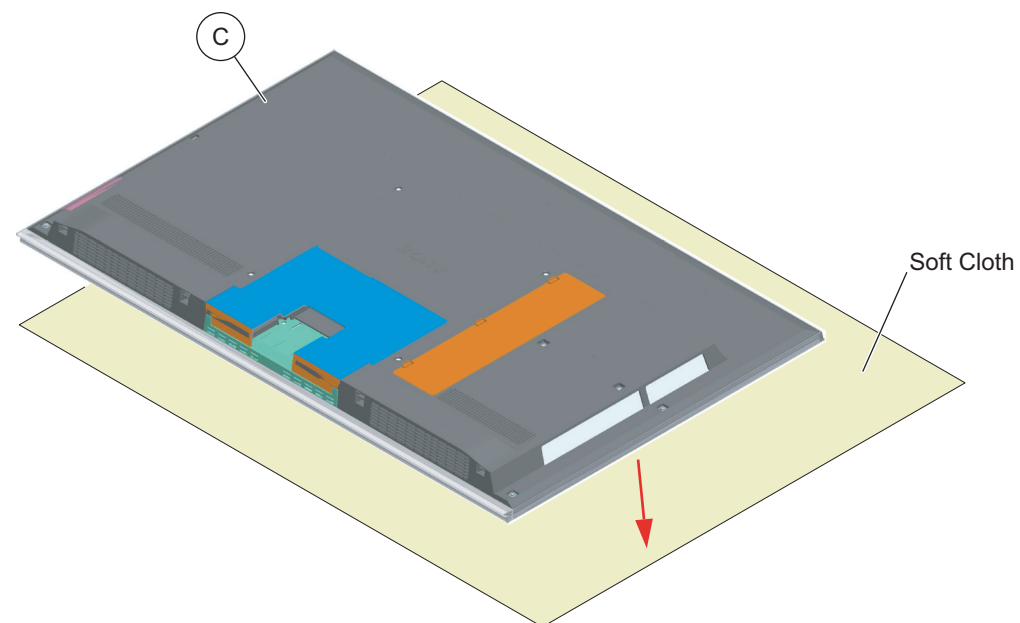
SEC 1. DISASSEMBLY/PART NUMBER INFORMATION

1-1. TABLE-TOP STAND ASSEMBLY REMOVAL

- Ⓐ Remove 4 screws from Table-Top Stand Assembly
- Ⓑ Lift up TV set to detach from Table-Top Stand Assembly



- Ⓒ Gently place the TV set face down onto a soft cloth



Components not identified by a part number or description are not stocked because they are seldom required for routine service.

The component parts of an assembly are indicated by the reference numbers in the far right column of the parts list and within the dotted lines of the diagram.

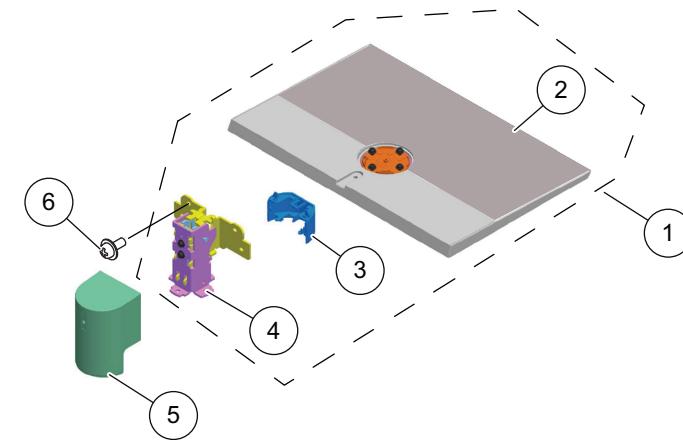
* Items marked with an asterisk are not stocked since they are seldom required for routine service. Expect some delay when ordering these components.

NOTE: The components identified by shading and \triangle mark are critical for safety. Replace only with part number specified.

NOTE: Les composants identifiés par un trame et une marque \triangle sont critiques pour la sécurité. Ne les remplacer que par une pièce portant le numéro spécifié.

NOTE: The components identified by a red outline and a \triangle mark contain confidential information. Specific instructions must be adhered to whenever these components are repaired and/or replaced. See Appendix A: Encryption Key Components in the back of this manual.

Check the [Sony Electronics Service Information](#) website for any additional service related issues for this model.)



REF. NO.	PART NO.	DESCRIPTION	[ASSEMBLY INCLUDES]	REF. NO.	PART NO.	DESCRIPTION	[ASSEMBLY INCLUDES]
1	A-1794-188-A	STAND (LLL1) ASSY (XBR-60LX900 ONLY)	[2-4]	4	4-170-445-01	NECK (ML1) (XBR-40LX900/46LX900 ONLY)	
2	X-2546-087-1	BASE (ML1) ASSEMBLY (XBR-40LX900 ONLY)		5	4-170-481-01	COVER, NECK (ML1 REAR) (XBR-40LX900/46LX900 ONLY)	
2	X-2546-088-1	BASE (L1) ASSEMBLY (XBR-46LX900 ONLY)		5	4-170-482-01	COVER, NECK (LL1 REAR) (XBR-52LX900 ONLY)	
2	X-2546-089-2	BASE (LL1) ASSEMBLY (XBR-52LX900 ONLY)		5	4-170-488-01	COVER, NECK (LLL3A REAR) (XBR-60LX900 ONLY)	
2	X-2546-090-3	BASE (LLL1) ASSEMBLY (XBR-60LX900 ONLY)		6	2-580-608-01	SCREW, +PSW M5X16 (ALL EXCEPT XBR-60LX900 ONLY) (SCREWS TO ATTACH TABLE-TOP STAND TO LCD TV)	
3	4-170-474-01	COVER, NECK (ML1 FRONT) (XBR-40LX900/46LX900 ONLY)		6	4-119-044-01	+PSW6(W) STAND (XBR-60LX900 ONLY) (SCREWS TO ATTACH TABLE-TOP STAND TO LCD TV) For product protection and safety reasons, Sony strongly recommends that you use the screws provided with the TV	
3	4-170-475-01	COVER, NECK (LL1 FRONT) (XBR-52LX900 ONLY)				CAUTION: These screws cannot be used to secure the TV to the Wall Mount Brackets	
3	4-170-476-01	COVER, NECK (LLL3A FRONT) (XBR-60LX900 ONLY)		∇	2-580-608-01	SCREW, +PSW M5X16	
4	4-170-446-01	NECK (LL1) (XBR-52LX900 ONLY)					
4	4-170-452-01	NECK (LLL3A) (XBR-60LX900 ONLY)					

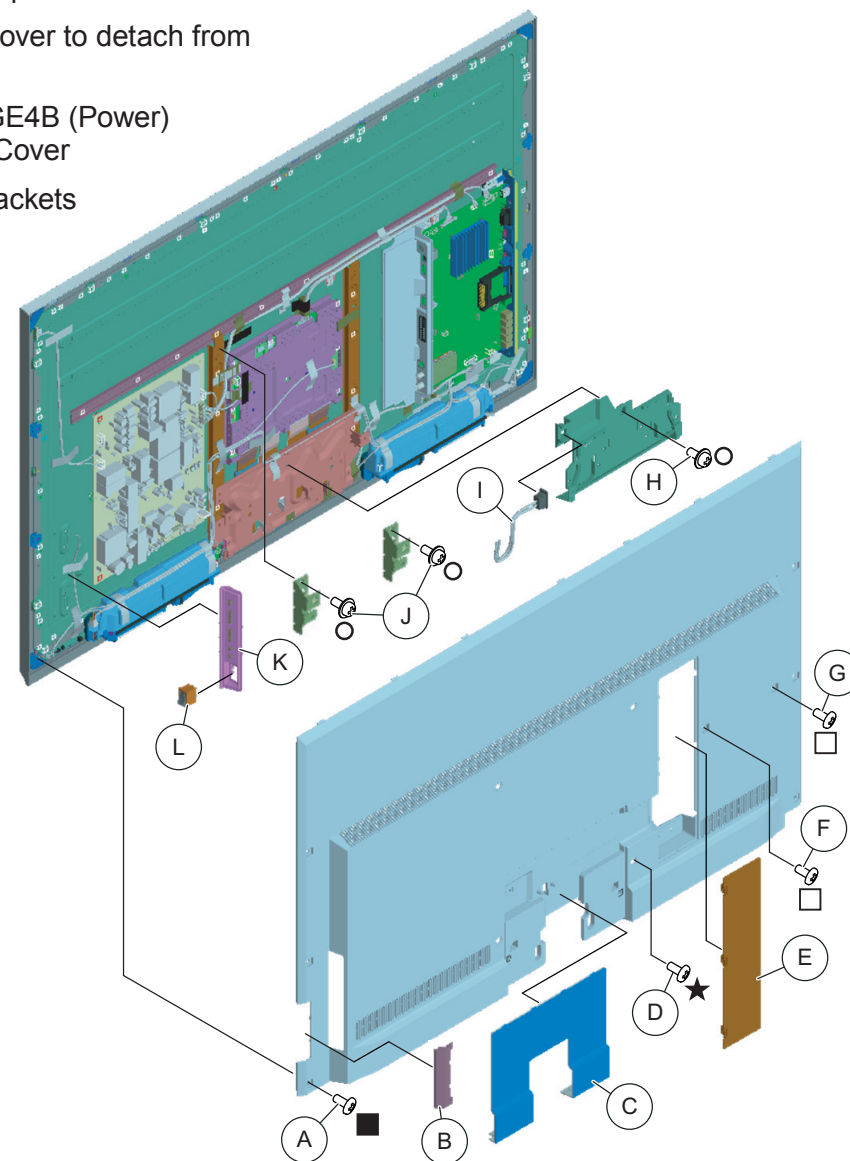
DISASSEMBLY/PART NUMBER INFORMATION

1-2. REAR COVER, UNDER COVER, VESA BRACKETS, AC INLET, SWITCH UNIT REMOVAL

1-2-1. XBR-40LX900/46LX900/52LX900 ONLY

- Ⓐ Remove screws from Rear Cover
6 from XBR-40LX900 Only
8 from XBR-46LX900/52LX900 Only
- Ⓑ Lift up Blind Touch Key Cover to remove from Rear Cover
- Ⓒ Lift up Bottom Cover to remove from Rear Cover
- Ⓓ Remove 4 screws from Rear Cover
- Ⓔ Lift up Terminal Cover to remove from Rear Cover
- Ⓕ Remove 1 screw from Terminal position
- Ⓖ Remove 1 screw from Side Jack position
- Ⓗ Remove 2 screws from Under Cover to detach from Bottom Frame
- Ⓘ Disconnect AC Inlet from GE5/GE4B (Power) Boards and detach from Under Cover
- ⓵ Remove 2 screws from Vesa Brackets to detach from LCD Panel
- Ⓚ Lift up Switch Unit and disconnect 1 connector to remove from LCD Panel
- Ⓛ Slide out Power Switch and disconnect 1 connector to remove from Switch Unit

NOTE: The Vesa Brackets are not included with the LCD Panel and must be reattached to the replacement LCD Panel



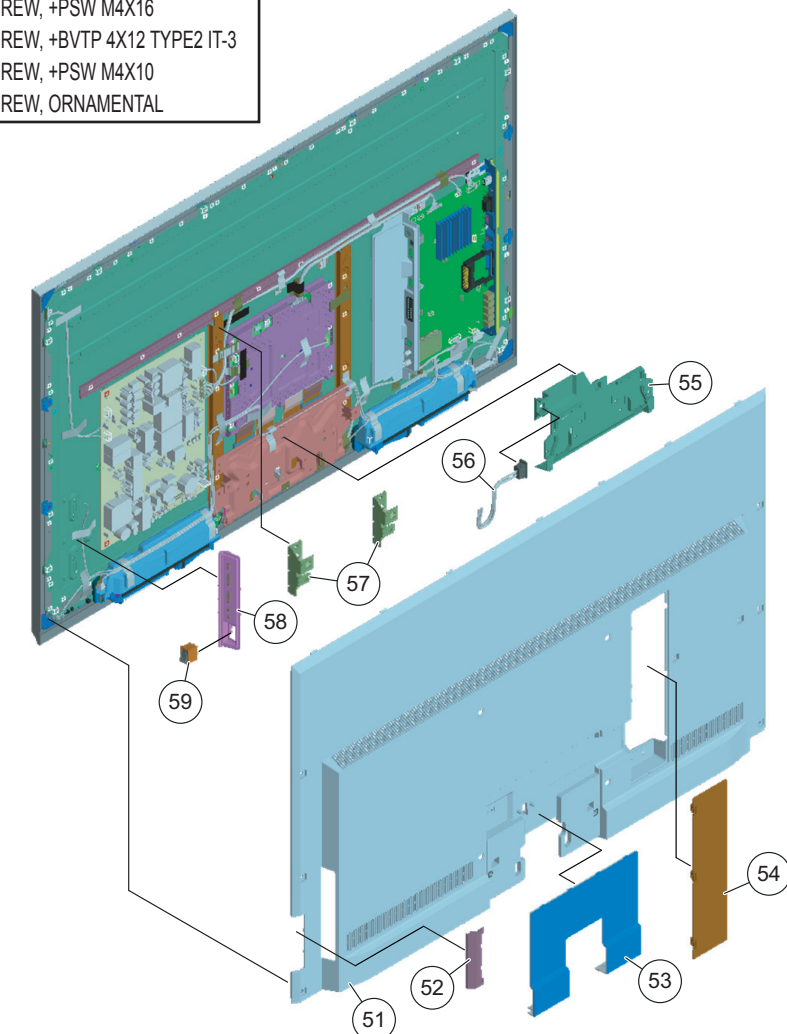
NOTE: The components identified by shading and \triangle mark are critical for safety. Replace only with part number specified.

NOTE: Les composants identifiés par un trame et une marque \triangle sont critiques pour la sécurité. Ne les remplacer que par une pièce portant le numéro spécifié.

NOTE: The components identified by a red outline and a \triangle mark contain confidential information. Specific instructions must be adhered to whenever these components are repaired and/or replaced. See Appendix A: Encryption Key Components in the back of this manual.

Check the [Sony Electronics Service Information](#) website for any additional service related issues for this model.)

■	2-580-603-01	SCREW, +PSW M4X16
□	2-580-639-01	SCREW, +BVTP 4X12 TYPE2 IT-3
○	4-159-298-01	SCREW, +PSW M4X10
★	4-178-167-01	SCREW, ORNAMENTAL



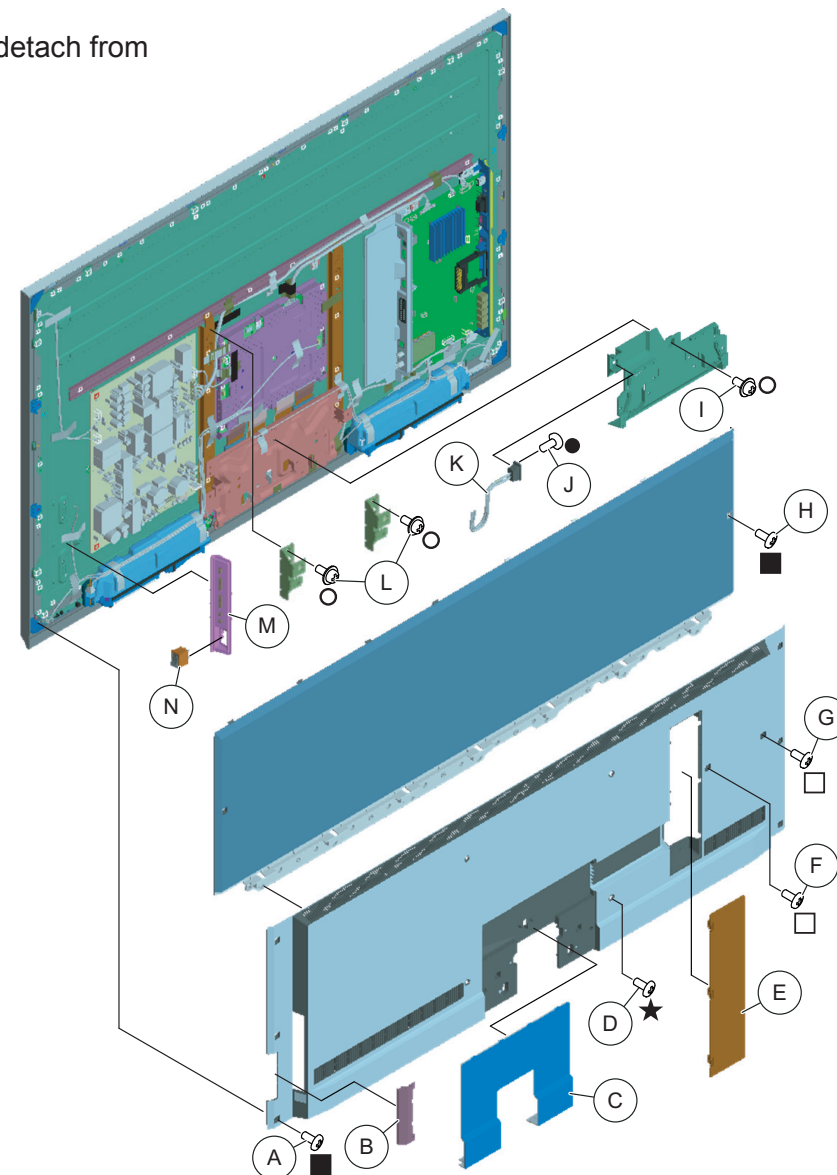
REF. NO.	PART NO.	DESCRIPTION	[ASSEMBLY INCLUDES]	REF. NO.	PART NO.	DESCRIPTION	[ASSEMBLY INCLUDES]
51	X-2547-174-2	REAR COVER (40) ASSEMBLY (XBR-40LX900 ONLY)		55	4-170-442-01	COVER, UNDER (PIA) (XBR-40LX900/46LX900 ONLY)	
51	X-2547-175-2	REAR COVER (46) ASSEMBLY (XBR-46LX900 ONLY)		55	4-170-442-11	COVER, UNDER (PIA) (XBR-52LX900 ONLY)	
51	X-2547-177-2	REAR COVER (52) ASSEMBLY (XBR-52LX900 ONLY)		\triangle 56	1-842-031-11	AC INLET (2P)	
52	4-165-967-02	COVER, BLIND TOUCH KEY		57	4-164-305-01	BRACKET, VESA T (ML)	
53	4-165-763-01	COVER, BOTTOM (40, 46) (XBR-40LX900/46LX900 ONLY)		58	1-489-135-11	SWITCH UNIT	
53	4-165-764-01	COVER, BOTTOM (52) (XBR-52LX900 ONLY)		59	1-798-309-11	POWER SWITCH	
54	4-185-199-01	COVER, TERMINAL					

DISASSEMBLY/PART NUMBER INFORMATION

1-2-2. XBR-60LX900 ONLY

- (A) Remove 8 screws from Rear Cover Assembly
- (B) Lift up Blind Touch Key Cover to remove from Rear Cover
- (C) Lift up Bottom Cover to remove from Rear Cover Assembly
- (D) Remove 4 screws from Rear Cover Assembly
- (E) Lift up Terminal Cover to remove from Rear Cover Assembly
- (F) Remove 1 screw from Terminal position
- (G) Remove 1 screw from Side Jack position
- (H) Remove 2 screws from Rear Cover Top
- (I) Remove 1 screw from Under Cover to detach from Bottom Frame
- (J) Remove 1 screw from AC Inlet to detach from Bottom Frame
- (K) Disconnect AC Inlet from GE4A (Power) Board and detach from Under Cover
- (L) Remove 2 screws from Vesa Brackets to detach from LCD Panel
- (M) Lift up Switch Unit and disconnect 1 connector to remove from LCD Panel
- (N) Slide out Power Switch and disconnect 1 connector to remove from Switch Unit

NOTE: The Vesa Brackets are not included with the LCD Panel and must be reattached to the replacement LCD Panel



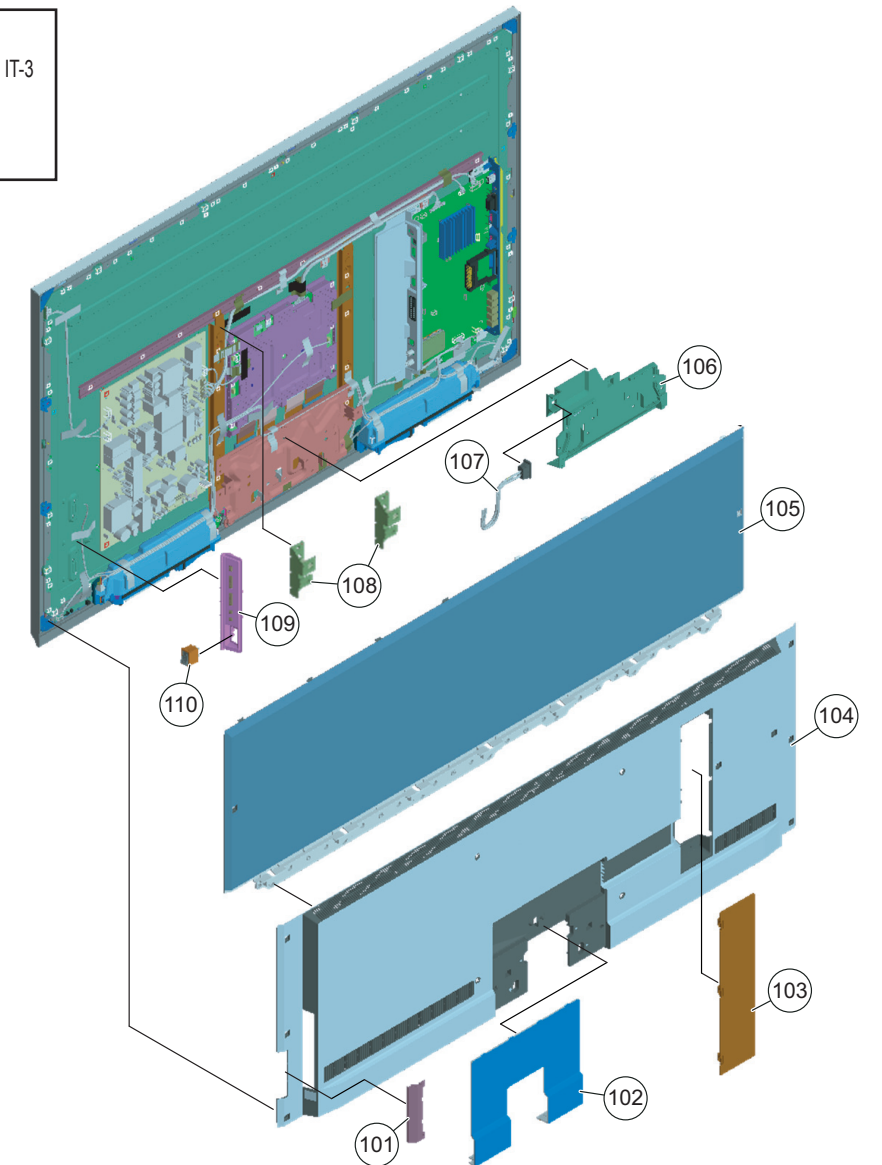
NOTE: The components identified by shading and \triangle mark are critical for safety. Replace only with part number specified.

NOTE: Les composants identifiés par un trame et une marque \triangle sont critiques pour la sécurité. Ne les remplacer que par une pièce portant le numéro spécifié.

NOTE: The components identified by a red outline and a \triangle mark contain confidential information. Specific instructions must be adhered to whenever these components are repaired and/or replaced. See Appendix A: Encryption Key Components in the back of this manual.

Check the [Sony Electronics Service Information](#) website for any additional service related issues for this model.)

■	2-580-603-01	SCREW, +PSW M4X16
□	2-580-639-01	SCREW, +BVTP 4X12 TYPE2 IT-3
●	2-580-592-01	SCREW, +PSW M3X8
○	4-159-298-01	SCREW, +PSW M4X10
★	4-178-167-01	SCREW, ORNAMENTAL

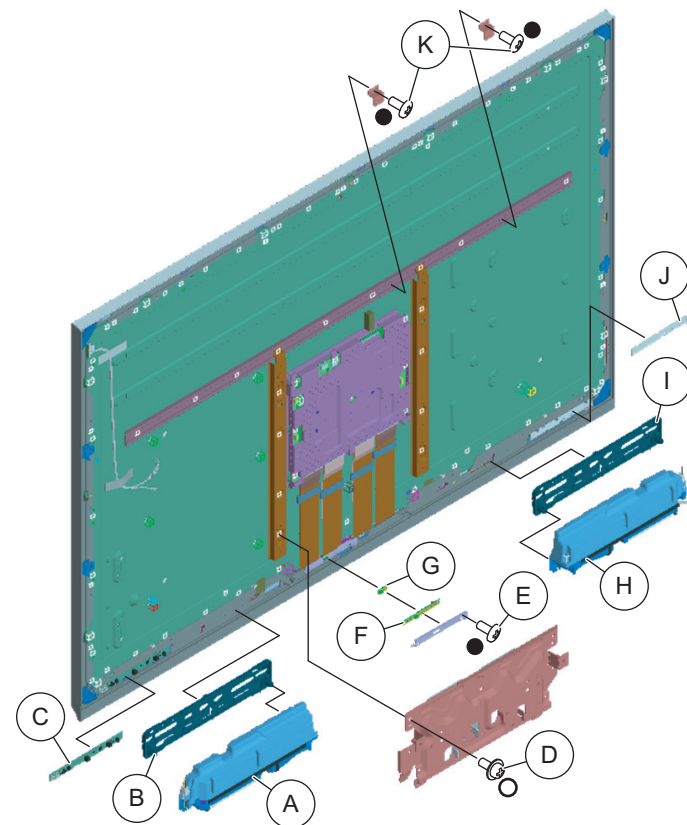


REF. NO.	PART NO.	DESCRIPTION	[ASSEMBLY INCLUDES]	REF. NO.	PART NO.	DESCRIPTION	[ASSEMBLY INCLUDES]
101	4-165-967-02	COVER, BLIND TOUCH KEY		106	4-168-432-21	COVER, UNDER (60)	
102	4-165-765-01	COVER, BOTTOM (60) (XBR-60LX900 ONLY)		\triangle 107	1-842-104-31	AC INLET	
103	4-185-199-01	COVER, TERMINAL		108	4-176-944-01	BRACKET, VESA T (ML))	
104	X-2548-052-1	REAR COVER (60) ASSEMBLY (XBR-60LX900 ONLY)		109	1-489-135-11	SWITCH UNIT	
105	4-165-760-01	REAR COVER (60 TOP))		110	1-798-309-11	POWER SWITCH	

DISASSEMBLY/PART NUMBER INFORMATION

1-3. SPEAKER BOX ASSEMBLY, HEM BOARD, CAMERA MODULE AND HLR BOARD REMOVAL

- Ⓐ Lift up right-side Speaker Box Assembly to remove from Speaker Bracket
- Ⓑ Lift up right-side Speaker Bracket to remove from Bottom Horizontal Frame
- Ⓒ Disconnect 1 connector from HEM Board, then release clips and lift up to remove from Bottom Cabinet Right
- Ⓓ Remove screws from Bottom Frame to detach from LCD Panel
5 from XBR-40LX900/46LX900/52LX900 Only
6 from XBR-60LX900 Only
- Ⓔ Remove 1 screw from Camera Bracket to detach from Bottom Cabinet Center
- Ⓕ Disconnect 1 connector from Camera Module, then release clips and lift up to remove from Bottom Cabinet Center
- Ⓖ Lift up Camera Ornament to remove from Bottom Cabinet Center
- Ⓗ Lift up left-side Speaker Box Assembly to remove from Speaker Bracket
- Ⓘ Lift up left-side Speaker Bracket to remove from Bottom Horizontal Frame
- Ⓙ Disconnect 1 connector from HLR Board, then release clips and lift up to remove from Bottom Cabinet Left
- Ⓚ Remove 2 screws from LVDS Holder to detach from LCD Panel

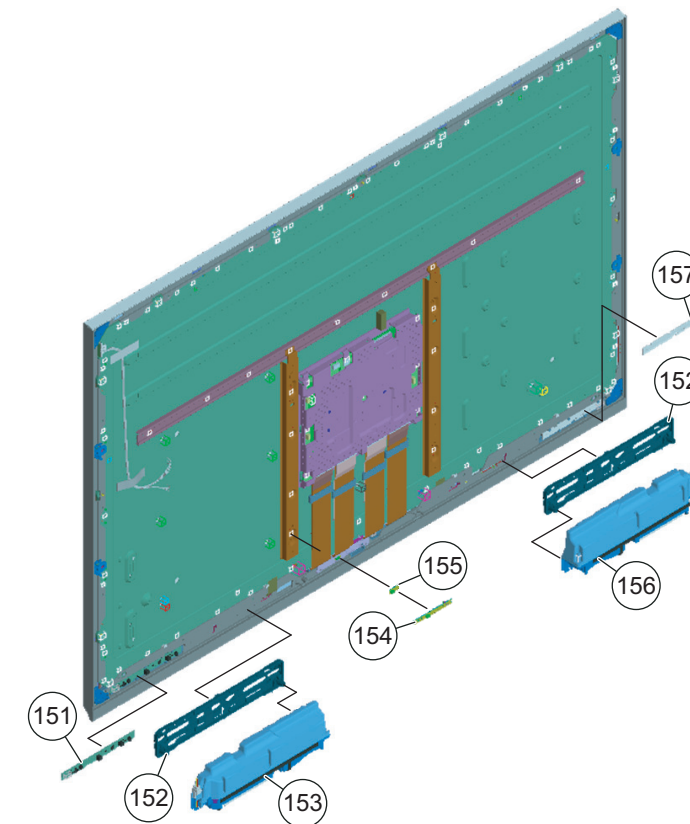


NOTE: The components identified by shading and \triangle mark are critical for safety. Replace only with part number specified.

NOTE: Les composants identifiés par un trame et une marque \triangle sont critiques pour la sécurité. Ne les remplacer que par une pièce portant le numéro spécifié.

NOTE: The components identified by a red outline and a \triangle mark contain confidential information. Specific instructions must be adhered to whenever these components are repaired and/or replaced. See Appendix A: Encryption Key Components in the back of this manual.

Check the [Sony Electronics Service Information](http://www.sony.com/electronics/service) website for any additional service related issues for this model.)

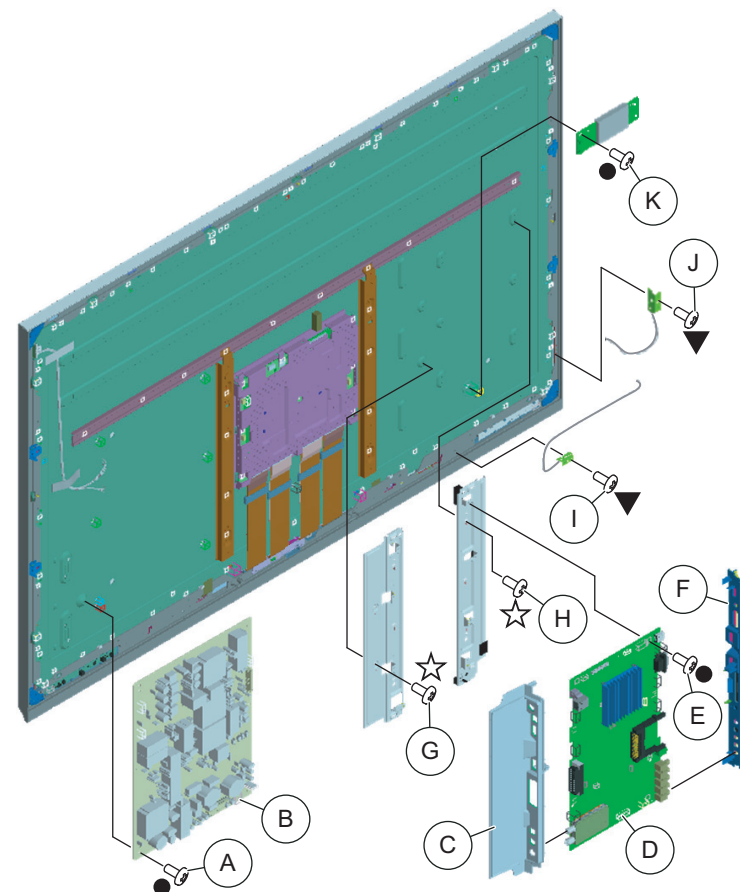


REF. NO.	PART NO.	DESCRIPTION	[ASSEMBLY INCLUDES]	REF. NO.	PART NO.	DESCRIPTION	[ASSEMBLY INCLUDES]
151	A-1744-410-A	HEM BOARD, MOUNTED		156	1-858-378-11	SP BOX ASSEMBLY (LEFT)	
152	4-184-303-02	BRACKET, SP (PIA)		157	A-1759-225-A	HLR BOARD, MOUNTED	
153	1-858-378-21	SP BOX ASSEMBLY (RIGHT)					
154	1-487-843-11	CAMERA MODULE		●	2-580-592-01	SCREW, +PSW M3X8	
155	4-184-779-01	ORNAMENT, CAMERA		○	4-159-298-01	SCREW, +PSW M4X10	

DISASSEMBLY/PART NUMBER INFORMATION

1-4. GE5/GE4B/GE4A (POWER) BOARDS, BUHS BOARD, WIFI ANTENNAS AND WIRELESS LAN CARD REMOVAL

- (A) Remove screws from GE5/GE4B/GE4A (Power) Boards
4 from GE5 (Power) Board (XBR-40LX900 Only)
5 from GE4B/GE4A (Power) Boards (XBR-46LX900/52LX900/60LX900 Only)
- (B) Disconnect 6 connectors from GE5/GE4B/GE4A (Power) Boards
- (C) Slide Terminal Bracket to left-side to remove from BUHS Board
- (D) Disconnect 5 connectors from BUHS Board
- (E) Remove 9 screws from BUHS Board
- (F) Slide Side Jack Bracket to right-side to remove from BUHS Board
- (G) Remove 3 screws from B Frame Left to detach from LCD Panel
- (H) Remove 5 screws from B Frame Right to detach from LCD Panel
- (I) Remove 1 screw from Antenna to detach from Bottom Horizontal Frame
- (J) Remove 1 screw from Antenna to detach from Vertical Frame Left
- (K) Remove 2 screws from WIFI Card to detach from LCD Panel

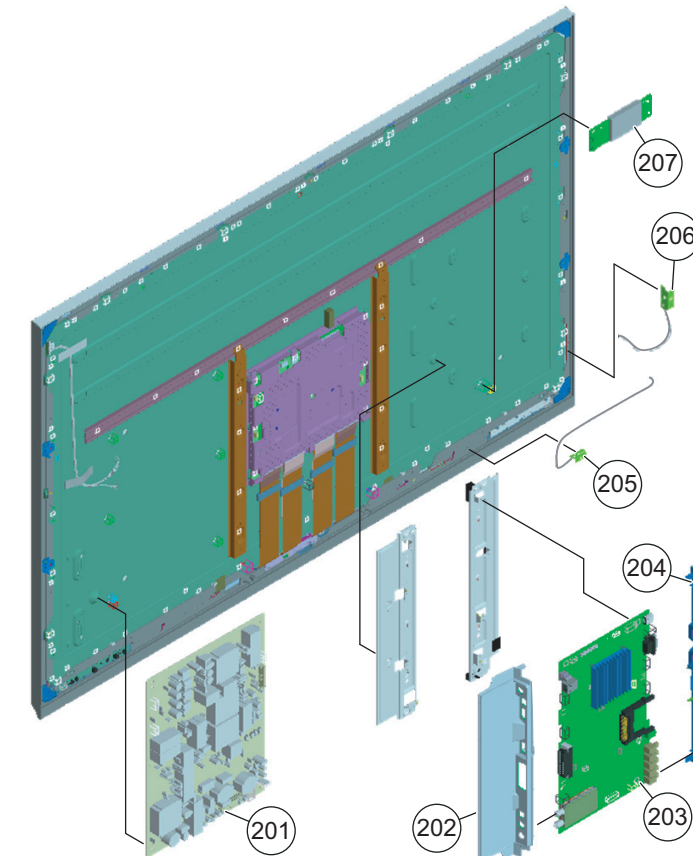


NOTE: The components identified by shading and \triangle mark are critical for safety. Replace only with part number specified.

NOTE: Les composants identifiés par un trame et une marque \triangle sont critiques pour la sécurité. Ne les remplacer que par une pièce portant le numéro spécifié.

NOTE: The components identified by a red outline and a \mathfrak{L} mark contain confidential information. Specific instructions must be adhered to whenever these components are repaired and/or replaced. See Appendix A: Encryption Key Components in the back of this manual.

Check the [Sony Electronics Service Information](http://www.sony.com/electronics/service) website for any additional service related issues for this model.

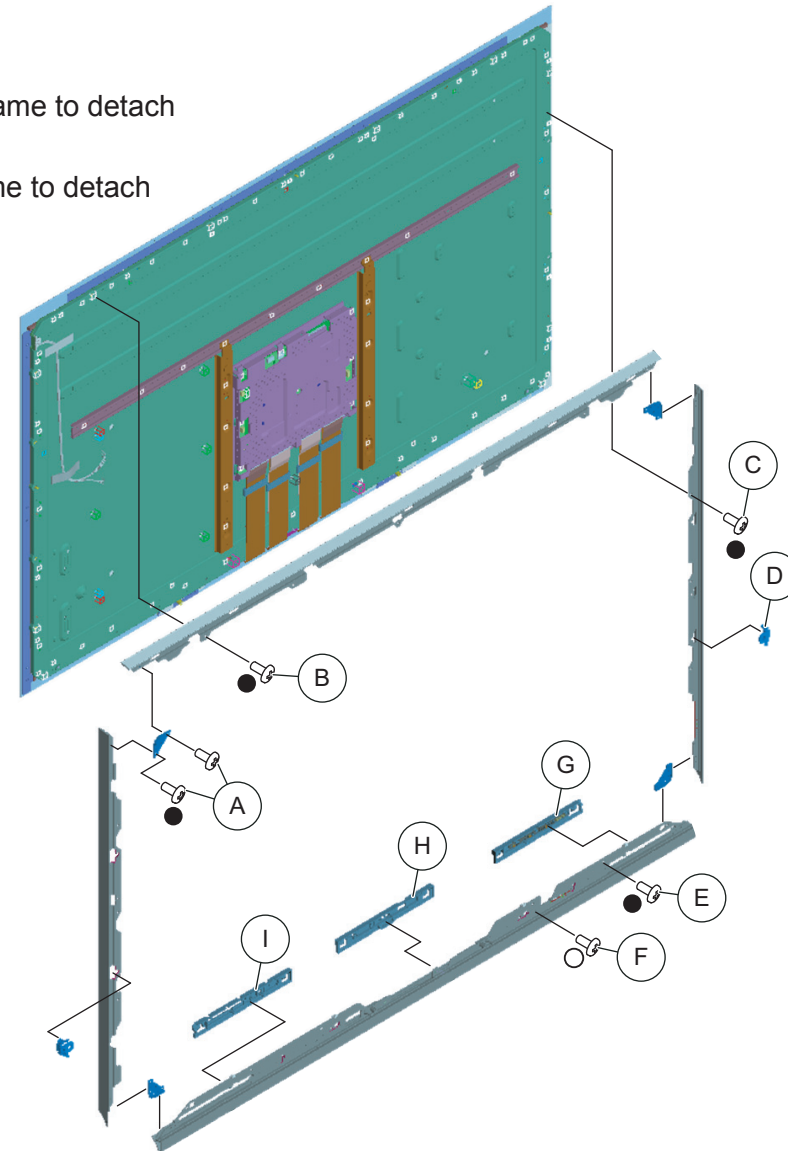


REF. NO.	PART NO.	DESCRIPTION	[ASSEMBLY INCLUDES]	REF. NO.	PART NO.	DESCRIPTION	[ASSEMBLY INCLUDES]
201	1-474-222-11	GE5 (POWER) BOARD, COMPLETE (XBR-40LX900 ONLY)		204	X-2547-018-1	BRACKET, SIDE JACK T ASSEMBLY	
201	1-474-221-11	GE4B (POWER) BOARD, COMPLETE (XBR-46LX900/52LX900 ONLY)		205	1-754-692-21	ANTENNA	
201	1-474-220-11	GE4A (POWER) BOARD, COMPLETE (XBR-60LX900 ONLY)		206	1-754-692-11	ANTENNA	
				207	1-487-819-11	CARD, WIRELESS LAN	
					A-1786-594-A	EM BOARD, MOUNTED (XBR-60LX900 ONLY)	
				NOTE: PN information only. Board location not available at this time.			
				\blacktriangledown	2-345-219-11	+B IB 3X-- CM3	
				\bullet	2-580-592-01	SCREW, +PSW M3X8	
				\star	2-580-590-01	SCREW, +PSW M3X5	
\mathfrak{L}	203	A-1781-799-A	BUHS BOARD, COMPLETE				
NOTE: For BUHS Board replacement, please refer to section 2-2. Setting the Destination after Replacing the BUHS Board or LCD Panel.							
NOTE: Final software is not installed on this BUHS Board.							
Install the update after replacing this board using the instructions provided with the software.							

DISASSEMBLY/PART NUMBER INFORMATION

1-5. HORIZONTAL FRAMES, VERTICAL FRAMES, CORNER JOINTS AND BOTTOM CABINET ASSEMBLY REMOVAL

- Ⓐ Remove 8 screws from Corner Joints to detach from Horizontal and Vertical Frames
- Ⓑ Remove screws from top Horizontal Frame to detach from LCD Panel
 - 4 from XBR-40LX900/46LX900/52LX900 Only
 - 5 from XBR-60LX900 Only
- Ⓒ Remove screws from Vertical Frames to detach from LCD Panel
 - 4 from XBR-40LX900/46LX900/52LX900 Only
 - 8 from XBR-60LX900 Only
- Ⓓ Slide out Frame Clamps to detach Vertical Frames from LCD Panel
 - 2 from XBR-40LX900 Only
 - 4 from XBR-46LX900/52LX900 Only
 - 6 from XBR-60LX900 Only
- Ⓔ Remove 4 screws from bottom Horizontal Frame to detach from LCD Panel
- Ⓕ Remove screws from bottom Horizontal Frame to detach from LCD Panel
 - 2 from XBR-40LX900/46LX900 Only
 - 4 from XBR-52LX900/60LX900 Only
- Ⓖ Lift up Bottom Cabinet Assembly Left to remove from Bottom Horizontal Frame
- Ⓗ Lift up Bottom Cabinet Assembly Center to remove from Bottom Horizontal Frame
- Ⓘ Lift up Bottom Cabinet Assembly Right to remove from Bottom Horizontal Frame



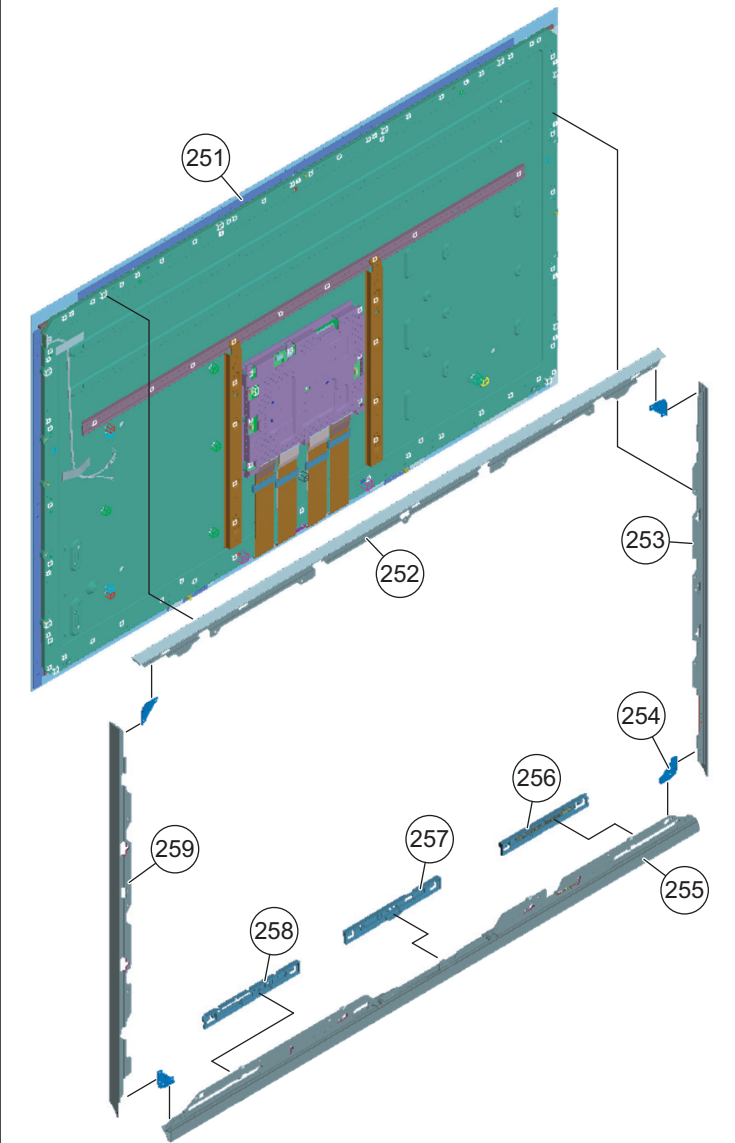
NOTE: The components identified by shading and \triangle mark are critical for safety. Replace only with part number specified.

NOTE: Les composants identifiés par un trame et une marque \triangle sont critiques pour la sécurité. Ne les remplacer que par une pièce portant le numéro spécifié.

NOTE: The components identified by a red outline and a \triangle mark contain confidential information. Specific instructions must be adhered to whenever these components are repaired and/or replaced. See Appendix A: Encryption Key Components in the back of this manual.

Check the [Sony Electronics Service Information](http://www.sony.com/electronics/service) website for any additional service related issues for this model.)

REF. NO.	PART NO.	DESCRIPTION	[ASSEMBLY INCLUDES]
251	NA	LCD PANEL	
		FOR ALL LCD PANEL PART NUMBER INFORMATION REFER TO THE LCD PANELS SERVICE MANUAL	
252	4-186-936-01	FRAME, HT (40PIA2) (XBR-40LX900 ONLY)	
252	4-186-940-01	FRAME, HT (46PIA2) (XBR-46LX900 ONLY)	
252	4-186-944-01	FRAME, HT (52PIA2) (XBR-52LX900 ONLY)	
252	4-186-948-01	FRAME, HT (60PIA2) (XBR-60LX900 ONLY)	
253	4-186-935-01	FRAME, VL (40PIA2) (XBR-40LX900 ONLY)	
253	4-186-939-01	FRAME, VL (46PIA2) (XBR-46LX900 ONLY)	
253	4-186-943-01	FRAME, VL (52PIA2) (XBR-52LX900 ONLY)	
253	4-186-947-01	FRAME, VL (60PIA2) (XBR-60LX900 ONLY)	
254	4-174-329-01	JOINT, CORNER	
255	4-186-937-01	FRAME, HB (40 PIA) (XBR-40LX900 ONLY)	
255	4-186-941-02	FRAME, HB (46 PIA2) (XBR-46LX900 ONLY)	
255	4-186-945-02	FRAME, HB (52 PIA2) (XBR-52LX900 ONLY)	
255	4-186-949-01	FRAME, HB (60 PIA2) (XBR-60LX900 ONLY)	
256	X-2548-231-1	CABINET, BTM (PIA L) ASSEMBLY	
257	X-2548-297-2	CABINET, BTM (PIA C) ASSEMBLY	
258	X-2548-230-1	CABINET, BTM (PIA R) ASSEMBLY	
259	4-186-934-01	FRAME, VR (40PIA2) (XBR-40LX900 ONLY)	
259	4-186-938-02	FRAME, VR (46PIA2) (XBR-46LX900 ONLY)	
259	4-186-942-01	FRAME, VR (52PIA2) (XBR-52LX900 ONLY)	
259	4-186-946-01	FRAME, VR (60PIA2) (XBR-60LX900 ONLY)	
	●	2-580-592-01	SCREW, +PSW M3X8
	○	4-159-298-01	SCREW, +PSW M4X10



DISASSEMBLY/PART NUMBER INFORMATION

1-6. CLEANING THE LCD PANEL

CAUTION: When cleaning the TV, be sure to unplug the power cord to avoid any chance of electric shock.

Clean the cabinet of the TV with a dry soft cloth.

Wipe the LCD screen gently with a soft cloth.

- Stubborn stains may be removed with a cloth slightly moistened with a solution of mild soap and warm water.
- If using a chemically pretreated cloth, please follow the instruction provided on the package.
- Never use strong solvents such as a thinner, alcohol or benzene for cleaning.
- Periodic vacuuming of the ventilation openings is recommended to ensure to proper ventilation.

1-7. SCREW LEGEND

XBR-40LX900

P/N	DESCRIPTION	REMARKS	TOTAL
■ 2-580-603-01	SCREW, +PSW M4X16	RC(6)	6
□ 2-580-639-01	SCREW, +BVTP 4X12 TYPE2 IT-3	RC to TERMINAL BRKT(1), RC to SIDE JACK BRKT(1)	2
▼ 2-345-219-11	+B IB 3X-- CM3	WIFI ANTENNA(2)	2
▽ 2-580-608-01	SCREW, +PSW M5X16	TABLE-TOP STAND(4), NECK to BASE(4)	8
● 2-580-592-01	SCREW, +PSW M3X8	GE5(4), BUHS(9), LVDS(2), ORNMNT CAMERA(1), CORNER JOINTS(8), HORZ/VERT FRMS(12), WIFI(2)	38
○ 4-159-298-01	SCREW, +PSW M4X10	UC(2), VESA(2), BTM FRM(5), BTM HRZ FRM(2)	11
★ 4-178-167-01	SCREW, ORNAMENTAL	RC(4)	4
☆ 2-580-590-01	SCREW, +PSW M3X5	B FRM-R(5), B FRM-L(3)	8

XBR-46LX900

P/N	DESCRIPTION	REMARKS	TOTAL
■ 2-580-603-01	SCREW, +PSW M4X16	RC(8)	8
□ 2-580-639-01	SCREW, +BVTP 4X12 TYPE2 IT-3	RC to TERMINAL BRKT(1), RC to SIDE JACK BRKT(1)	2
▼ 2-345-219-11	+B IB 3X-- CM3	WIFI ANTENNA(2)	2
▽ 2-580-608-01	SCREW, +PSW M5X16	TABLE-TOP STAND(4), NECK to BASE(4)	8
● 2-580-592-01	SCREW, +PSW M3X8	GE4B(5), BUHS(9), LVDS(2), ORNMNT CAMERA(1), CORNER JOINTS(8), HORZ/VERT FRMS(12), WIFI(2)	39
○ 4-159-298-01	SCREW, +PSW M4X10	UC(2), VESA(2), BTM FRM(5), BTM HRZ FRM(2)	11
★ 4-178-167-01	SCREW, ORNAMENTAL	RC(4)	4
☆ 2-580-590-01	SCREW, +PSW M3X5	B FRM-R(5), B FRM-L(3)	8

XBR-52LX900

P/N	DESCRIPTION	REMARKS	TOTAL
■ 2-580-603-01	SCREW, +PSW M4X16	RC(8)	8
□ 2-580-639-01	SCREW, +BVTP 4X12 TYPE2 IT-3	RC to TERMINAL BRKT(1), RC to SIDE JACK BRKT(1)	2
▼ 2-345-219-11	+B IB 3X-- CM3	WIFI ANTENNA(2)	2
▽ 2-580-608-01	SCREW, +PSW M5X16	TABLE-TOP STAND(4), NECK to BASE(4)	8
● 2-580-592-01	SCREW, +PSW M3X8	GE4B(5), BUHS(9), LVDS(2), ORNMNT CAMERA(1), CORNER JOINTS(8), HORZ/VERT FRMS(12), WIFI(2)	39
○ 4-159-298-01	SCREW, +PSW M4X10	UC(2), VESA(2), BTM FRM(5), BTM HRZ FRM(4)	13
★ 4-178-167-01	SCREW, ORNAMENTAL	RC(4)	4
☆ 2-580-590-01	SCREW, +PSW M3X5	B FRM-R(5), B FRM-L(3)	8

XBR-60LX900

P/N	DESCRIPTION	REMARKS	TOTAL
■ 2-580-603-01	SCREW, +PSW M4X16	RC TOP(2), RC BTM(8)	10
□ 2-580-639-01	SCREW, +BVTP 4X12 TYPE2 IT-3	RC to TERMINAL BRKT(1), RC to SIDE JACK BRKT(1)	2
▼ 2-345-219-11	+B IB 3X-- CM3	WIFI ANTENNA(2)	2
▽ 2-580-608-01	SCREW, +PSW M5X16	TABLE-TOP STAND(4), NECK to BASE(4)	8
● 2-580-592-01	SCREW, +PSW M3X8	GE4A(5), BUHS(9), LVDS(2), ORNMNT CAMERA(1), CORNER JOINTS(8), HORZ/VERT FRMS(17), WIFI(2), AC(1)	45
○ 4-159-298-01	SCREW, +PSW M4X10	UC(1), VESA(2), BTM FRM(6), BTM HRZ FRM(4)	13
★ 4-178-167-01	SCREW, ORNAMENTAL	RC(4)	4
☆ 2-580-590-01	SCREW, +PSW M3X5	B FRM-R(5), B FRM-L(3)	8

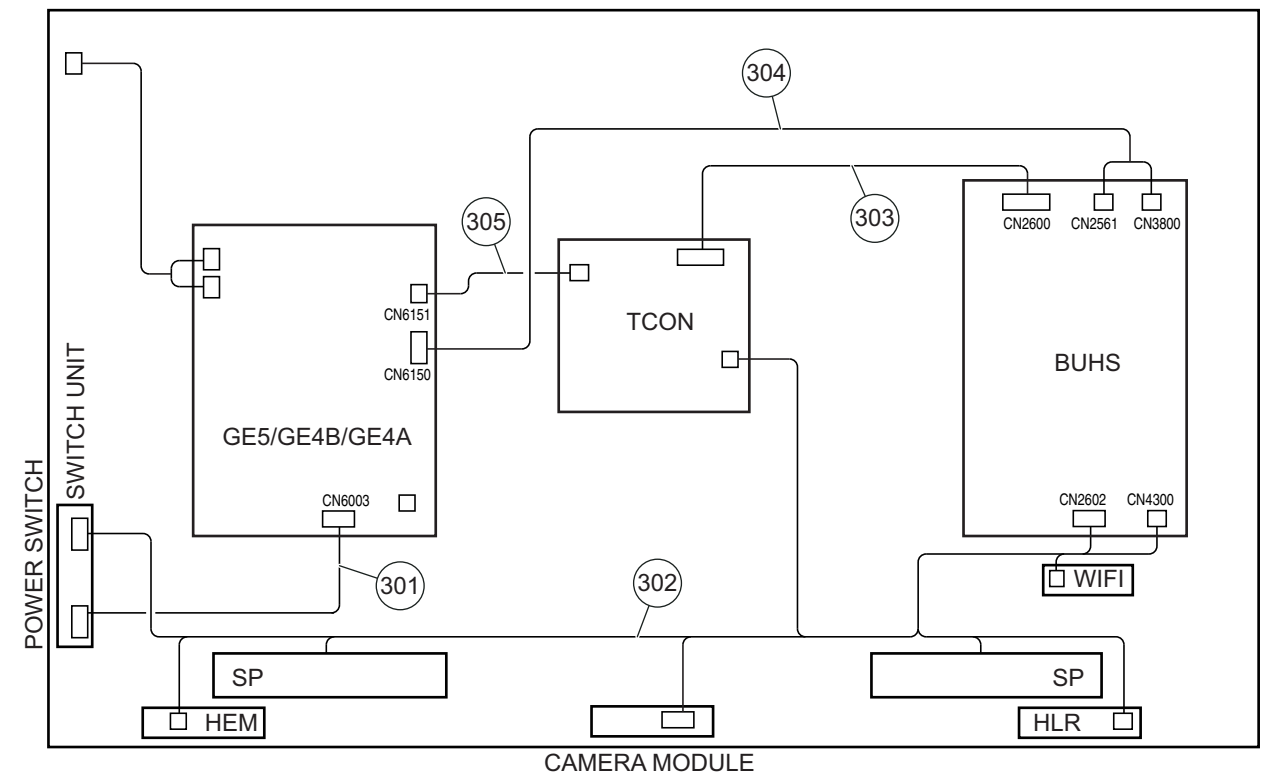
NOTE: The components identified by shading and \triangle mark are critical for safety. Replace only with part number specified.

NOTE: Les composants identifiés par un trame et une marque \triangle sont critiques pour la sécurité. Ne les remplacer que par une pièce portant le numéro spécifié.

NOTE: The components identified by a red outline and a \square mark contain confidential information. Specific instructions must be adhered to whenever these components are repaired and/or replaced. See Appendix A: Encryption Key Components in the back of this manual.

Check the [Sony Electronics Service Information](#) website for any additional service related issues for this model.)

1-8. CONNECTORS



REF. NO.	PART NO.	DESCRIPTION	[ASSEMBLY INCLUDES]	REF. NO.	PART NO.	DESCRIPTION	[ASSEMBLY INCLUDES]
301	1-837-665-12	CONNECTOR ASSEMBLY (XBR-40LX900 ONLY)		303	1-837-664-11	(LVDS) LEAD WIRE WITH CONNECTOR (XBR-46LX900 ONLY)	
301	1-837-666-12	CONNECTOR ASSEMBLY (XBR-46LX900 ONLY)		303	1-837-668-11	(LVDS) LEAD WIRE WITH CONNECTOR (XBR-52LX900 ONLY)	
301	1-837-667-12	CONNECTOR ASSEMBLY (XBR-52LX900 ONLY)		303	1-837-669-11	(LVDS) LEAD WIRE WITH CONNECTOR (XBR-60LX900 ONLY)	
* 301	1-837-532-12	CONNECTOR ASSEMBLY (XBR-60LX900 ONLY)		* 304	1-910-100-06	CONNECTOR ASSEMBLY 15P (XBR-40LX900 ONLY)	
302	1-910-101-18	HARNESS ASSEMBLY (XBR-40LX900 ONLY)		304	1-910-100-10	CONNECTOR ASSEMBLY 15P (XBR-46LX900 ONLY)	
302	1-910-101-20	HARNESS ASSEMBLY (XBR-46LX900 ONLY)		* 304	1-910-100-13	CONNECTOR ASSEMBLY 15P (XBR-52LX900 ONLY)	
302	1-910-101-22	HARNESS ASSEMBLY (XBR-52LX900 ONLY)		* 304	1-910-100-15	CONNECTOR ASSEMBLY 15P (XBR-60LX900 ONLY)	
302	1-910-101-24	HARNESS ASSEMBLY (XBR-60LX900 ONLY)		305	1-910-100-63	CONNECTOR ASSEMBLY 4P (XBR-40LX900/46LX900/52LX900 ONLY)	
303	1-837-674-11	(LVDS) LEAD WIRE WITH CONNECTOR (XBR-40LX900 ONLY)		305	1-910-101-58	CONNECTOR ASSEMBLY 4P (XBR-60LX900 ONLY)	

DISASSEMBLY/PART NUMBER INFORMATION

1-9. ACCESSORIES AND PACKING

1-458-251-11 3D GLASSES
3-299-071-04 FLYER, SAFETY
4-187-898-11 MANUAL, INSTRUCTION (ENGLISH VERSION)
4-187-898-21 MANUAL, INSTRUCTION (FRENCH VERSION)
4-187-898-31 MANUAL, INSTRUCTION (SPANISH VERSION)

⚠ 1-837-633-12 POWER-SUPPLY CORD
(XBR-60LX900 ONLY)
⚠ 1-837-644-12 POWER-SUPPLY CORD SET
(XBR-40LX900/46LX900/52LX900 ONLY)

X-2547-088-2 SPACER ASSEMBLY (B)
(XBR-40LX900/46LX900/52LX900 ONLY)
X-2547-089-2 SPACER ASSEMBLY (C)
(XBR-60LX900 ONLY)
* 4-180-034-12 SUPPLEMENT(STAND INSTALLATION)
(XBR-40LX900/46LX900/52LX900 ONLY)

1-10. MISCELLANEOUS

4-119-044-01 +PSW6(W) STAND
(XBR-60LX900 ONLY)
4-180-957-01 BADGE, XBR LOGO(H6)
X-2348-140-3 SUPPORT BELT KIT
3-299-766-01 CATCHER

4-193-093-01 CUSHION, SJ
(XBR-40LX900/46LX900 ONLY)
7-685-648-79 SCREW, +BVTP 3X12 TYPE2 IT-3
7-682-147-01 SCREW, +P 3X6
2-580-593-01 SCREW, +PSW M3X8
2-580-600-11 SCREW, +PSW M4X8

4-100-136-01 SHEET (CORE), C
(XBR-40LX900/46LX900/52LX900 ONLY)
4-184-304-01 SPACER, BC (PIA)
4-198-769-01 TAPE (FPC)
4-198-769-11 TAPE (FPC)

7-632-452-24 TAPE (NO.303) 18MMX35M YEL
4-197-276-01 TAPE, AL (COVER A)
4-197-277-01 TAPE, AL (COVER B)
4-197-278-01 TAPE, AL (COVER C)
4-197-281-11 TAPE, AL (FPC)

1-11. REMOTE COMMANDER

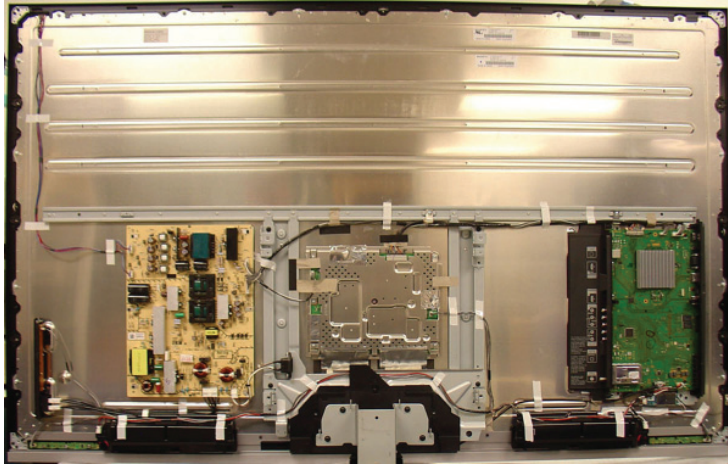
1-487-710-12 REMOTE COMMANDER (RM-YD036) (FOR US)
1-487-820-12 REMOTE COMMANDER (RM-YD051) (FOR CND/MX/LATIN)

DISASSEMBLY/PART NUMBER INFORMATION

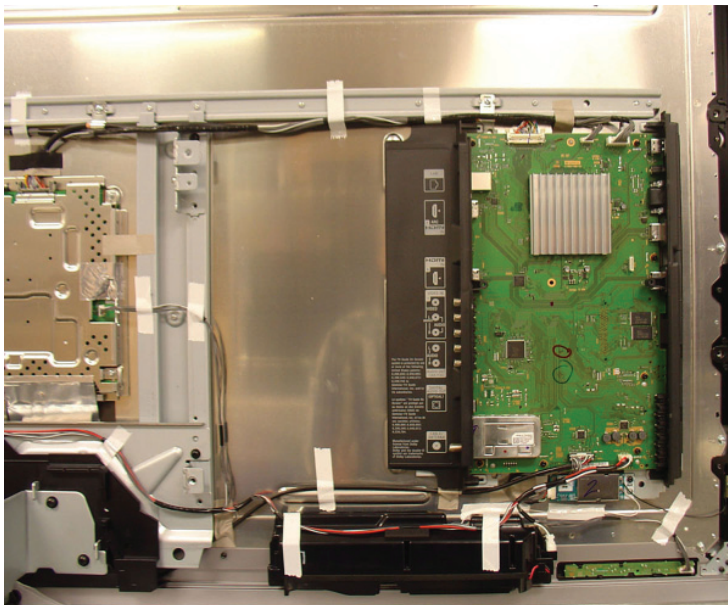
1-12. WIRE DRESSING

Illustrations from XBR-60LX900 model.

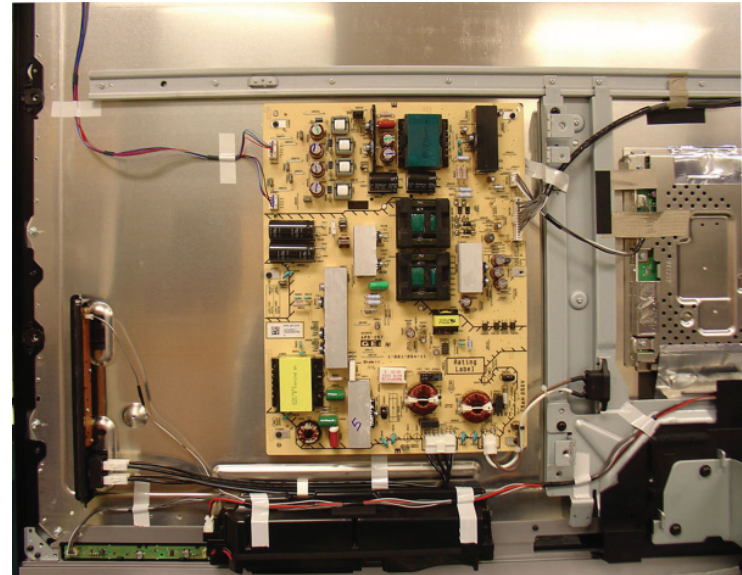
1-12-1.OVERALL WIRE DRESSING



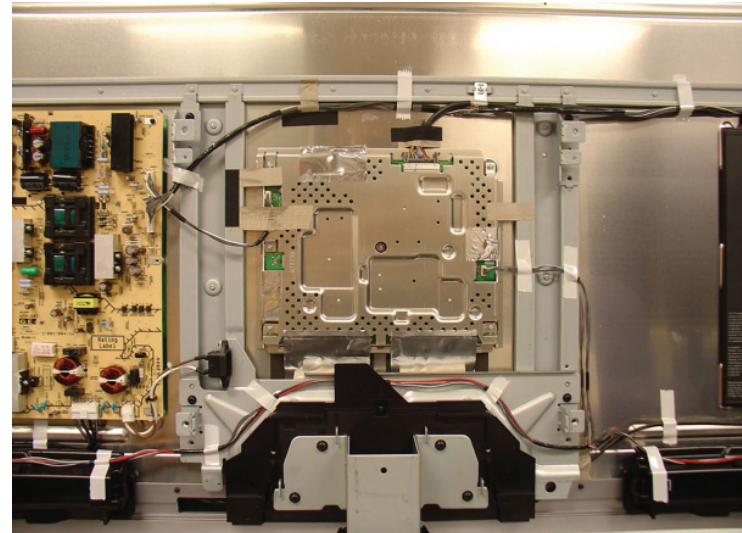
1-12-2.BUHS BOARD WIRE DRESSING



1-12-3.GE5/GE4B/GE4A (POWER) BOARD WIRE DRESSING



1-12-4.TCON BOARD WIRE DRESSING

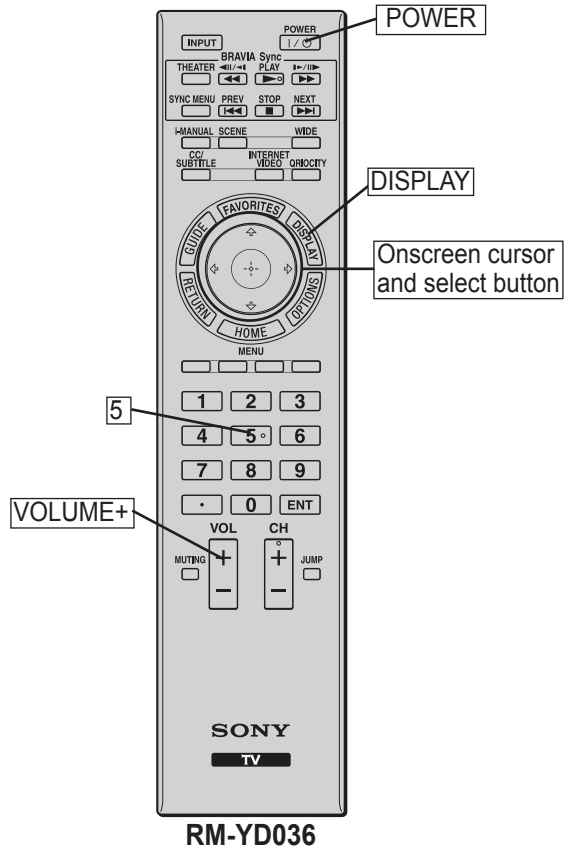


SEC 2. SERVICE ADJUSTMENTS

2-1. ACCESSING SERVICE ADJUSTMENT MODE

1. TV must be in Standby Mode. (POWER off).
2. Press the following buttons on the Remote Commander within a second of each other:

DISPLAY → Channel 5 → Volume + → POWER



DIGITAL	SERVICE
001 OP	
000 VERS	--
<MAIN>	<SUB>
DM1.301J00AA	SM1.010W00AA
M2.105C	SB1.000W00AA
DD1.016J00AA	SD1.010W00AA
(DM13 01J00AA)	RF01.05
WP00.521J00AA	ID1C117081
ID1C117081	LTY320AB01
PID04020000	
WF:2.0.0.99	<BEM>
WF:0B	BM1.012W00LU
Camera FW	BB1.000W00LU
Camera FW	BD1.011J46LUX

Sample Service Menu

SERVICE ADJUSTMENTS

2-1-1. VIEWING THE SERVICE MENUS

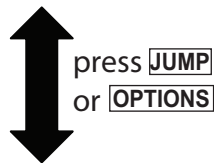
Use the Remote Commander to view the **Digital**, **Chassis** and **Sub** Service Menus and their options.

- To display the **Service Menu** that contains the Category you want to adjust, press **JUMP** or **OPTIONS** on the Remote Commander.

```
DIGITAL      SERVICE
001 OP
000 VERS      ---

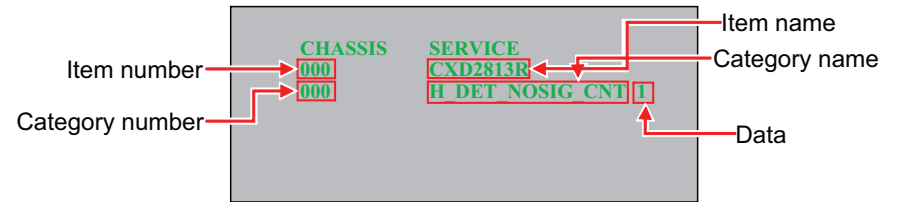
<MAIN>      <SUB>
DM1.301J00AA SM1.010W00AA
M2.105C      SB1.000W00AA
DD1.016J00AA SD1.010 W00AA
(DM13 01J00AA) RF01.05
WP00.521J00AA ID1C117081
ID1C117081    LTY320AB01
PID04020000
WF:2.0.0.99   <BEM>
WF:0B         BM1.012W00LU
Camera FW     BB1.000W00LU
Camera FW     BD1.011J46LUX
              -----
```

Sample Digital Service Menu



```
CHASSIS
000      CXD2813R
000      H_DET_NOSIG_CNT 1
```

Within each Service Menu are Categories and data information.



Sample Chassis Service Menu

SERVICE ADJUSTMENTS

2-1-2. USING THE REMOTE COMMANDER TO VIEW OR CHANGE SERVICE DATA

Use the buttons on the Remote Commander to access the Service Menu items and adjust the Data Values.

DISPLAY → Channel 5 → Volume + → POWER

4. To change the **Category**, press 2 to move to the Next Category or press 5 to go back to the Previous Category.
Note: Pressing 2 or 5 only changes the Categories within the Service Menu displayed.
5. To change the **adjustment item**, press 1 to move to the Next Item or 4 to go back to the Previous Item.
6. To change the **Data Value**, press 3 to increase the Data Value or 6 to decrease the Data Value.
7. Press **MUTING** then press 0 to Write the changes.
8. To exit service mode, press **HOME** or turn the TV power off.

2-2. ADJUSTMENTS AFTER REPLACING THE BUHS BOARD OR LCD PANEL

The following procedures must be completed after replacing the BUHS Board or the LCD panel.

- Update the TV to the latest software version
- Select the Model
- Select the Destination
- Verify model and panel information are correct
- Reconnect all cables

2-2-1. UPDATING THE SOFTWARE

After replacing the BUHS Board or the LCD Panel, you must update the software to the latest version.

Before you begin

- Disconnect all cables (RF, External input, Ethernet, etc.) from the TV

Instructions for updating the software are included with the software package. After completing the software update, proceed to “Selecting the Model”.

SERVICE ADJUSTMENTS

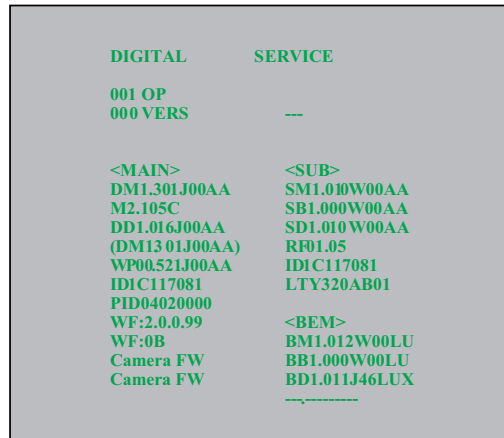
2-2-2. SELECTING THE MODEL

After replacing the BUHS Board or LCD Panel, go into Service Mode to set the Model data value.

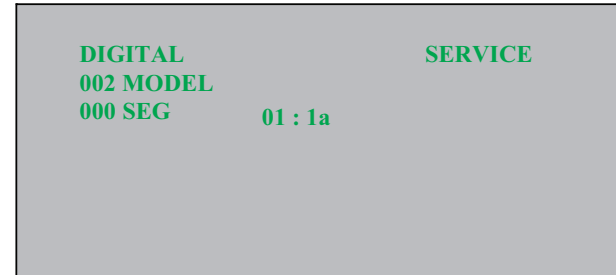
- TV must be in standby mode. (Power off).
- Access Service Mode.
Press the following buttons on the Remote Commander within a second of each other:

DISPLAY → Channel **5** → Volume **+** → **POWER**

- Display the **DIGITAL Service Menu**.
NOTE: There are 3 Service Menus for this model, DIGITAL, CHASSIS, and SUB. If the DIGITAL Service Menu is not displayed, press **JUMP** or **OPTIONS** on the Remote Commander.

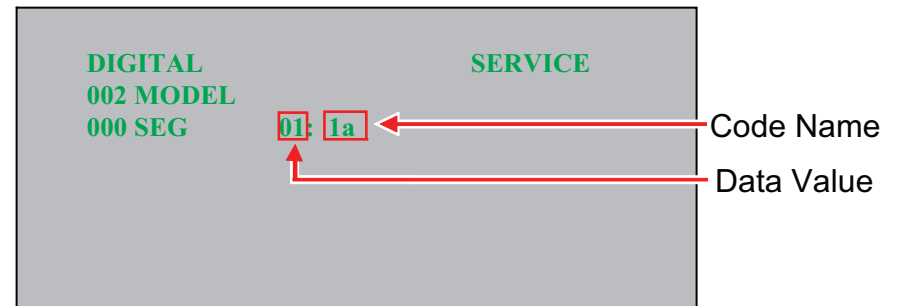


- Press **2** to move to the **002 MODEL** (Next) category.



- Using the table, press **2** to increase the data value or **1** to decrease the data value, to match the model of the TV.

Chassis	Model Name	Data Value	Code Name
AZ1-H	XBR-40LX900	01	1a
AZ1-H	XBR-46LX900	01	1a
AZ1-H	XBR-52LX900	01	1a
AZ1-H	XBR-60LX900	01	1a



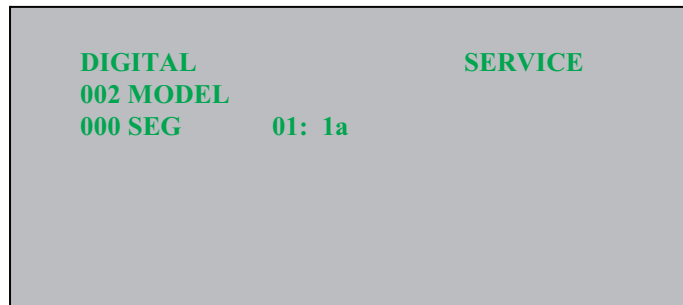
- Proceed to "Selecting the Destination".

SERVICE ADJUSTMENTS

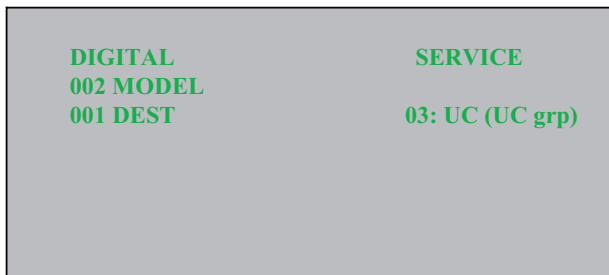
2-2-3. SETTING THE DESTINATION

After replacing the BUHS Board or the LCD Panel, the destination location must be set.

CAUTION: Selecting the incorrect destination may require replacing the BUHS Board.

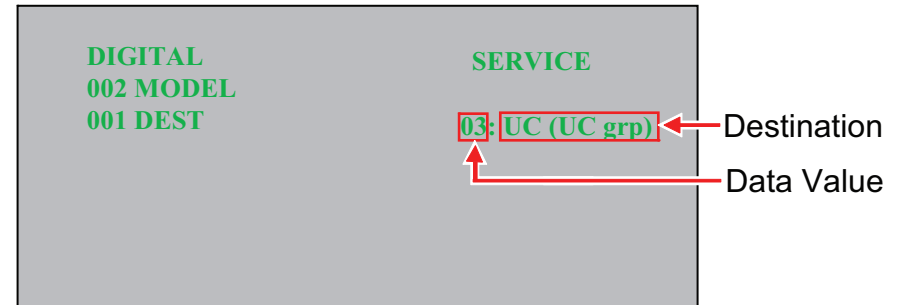


7. Press **[1]** to move to “001 DEST” sub Category.



8. Using the table, press **[3]** to increase the data value or **[6]** to decrease the data value, to select the destination of the TV.

GROUP	DESTINATION CODE	DATA VALUE	DESTINATION
UC grp	UC	3	US/CND
	LTN-D	16	MX/ LATIN AMERICA



CAUTION: Verify the DESTINATION is set correctly before proceeding to the next step. If another destination Data Value is selected, it may possibly corrupt the software which would require a BUHS Board replacement.

- After verifying the destination data value displays, press **[0]** to save (Write) the changes.
- Proceed to “Verifying the Model and Panel Information”.

2-2-4. VERIFYING THE MODEL AND PANEL INFORMATION

After saving the changes to the service data, verify the information.

- TV must be in standby mode. (Power off).
- Access Service Mode.
Press the following buttons on the Remote Commander within a second of each other:

[DISPLAY] → Channel **[5]** → Volume **[+]** → **[POWER]**

- Display the **DIGITAL Service Menu**.
NOTE: There are 3 Service Menus for this model, DIGITAL, CHASSIS, and SUB. If the DIGITAL Service Menu is not displayed, press **[JUMP]** or **[OPTIONS]** on the Remote Commander.

SERVICE ADJUSTMENTS

5. Exit Service Mode by pressing **HOME** or turn the TV power off.
6. Proceed to “Reconnecting All Cables”.

2-2-5. RECONNECTING ALL CABLES

After completing the changes to service mode, reconnect all the cables (RF, External input, Ethernet, etc.) to the TV then verify the TV set picture. If necessary, proceed to “White Balance Adjustments”.

The screenshot shows the following text in the Service Menu:

```

DIGITAL          SERVICE

001 OP          ---
000 VERS

<MAIN>          <SUB>
DM1.301J00AA   SM1.010W00AA
M2.105C        SB1.000W00AA
DD1.016J00AA   SD1.010W00AA
(DM13 01J00AA) RF01.05
WP00.521J00AA  ID1C117081
IDB61731AA     LK400D3LA8N
PID0E0A0000
WF:2.0.0.99    <BEM>
WF:0B          BM1.012W00LU
Camera FW      BB1.000W00LU
Camera FW      BD1.011J46LUX
                -----
    
```

Red boxes highlight the following values:

- Model ID: B61731AA
- Product ID: 0E0A0000
- Panel Code: LK400D3LA8N

4. Using the table, verify the Model ID and the Product ID match the information in the Service Menu.

Model Name	Model ID	Product ID	Panel ID	Code Name
XBR-40LX900	B61731AA	0E0A0000	LK400D3LA8N	1a
XBR-40LX900	B61731AA	420A0000	LK400D3LA8N	1a
XBR-46LX900	B61731AB	0E0A0000	LK460D3LA9N	1a
XBR-46LX900	B61731AB	420A0000	LK460D3LA9N	1a
XBR-52LX900	B61731AC	0E0A0000	LK520D3LB2N	1a
XBR-52LX900	B61731AC	420A0000	LK520D3LB2N	1a
XBR-60LX900	B61731AD	0E0A0000	LK600D3LA6N	1a
XBR-60LX900	B61731AD	420A0000	LK600D3LA6N	1a

SERVICE ADJUSTMENTS

2-3. WHITE BALANCE ADJUSTMENTS

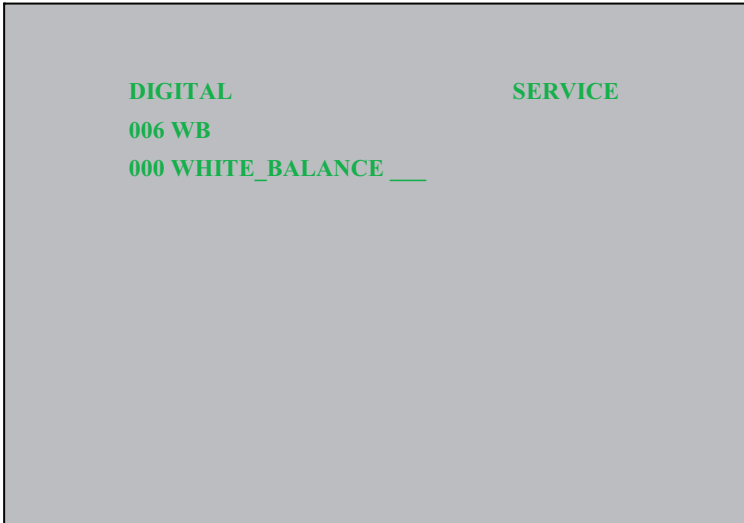
White Balance adjustment data is located on the Digital Service Menu.

1. TV must be in Standby Mode. (POWER off).
2. Press the following buttons on the Remote Commander within a second of each other:

DISPLAY → Channel **5** → Volume **+** → **POWER**

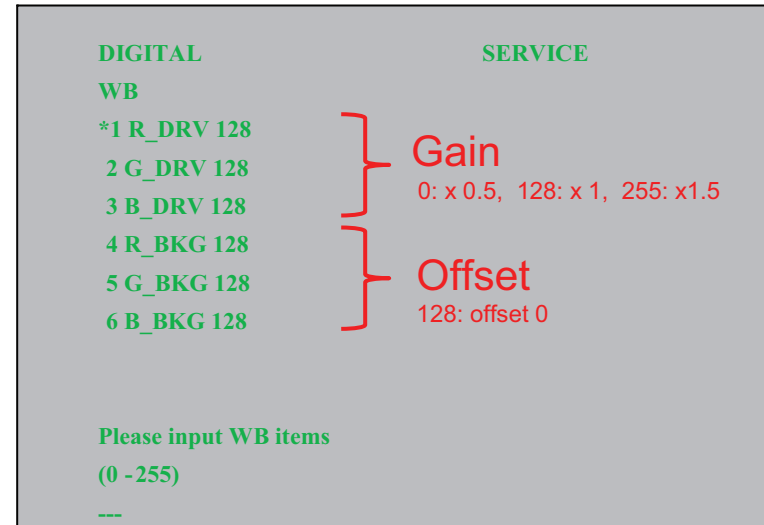
NOTE: If the **Digital Service Menu** is not displayed, press **JUMP** or **OPTIONS**.

3. Press **2** to move to “006 WB” Category.



4. Press **0** to enter White Balance Adjustment mode.
5. To select the White Balance Adjustment setting that needs to be changed, do the following:
 - a. To select R_DRV, press **1**.
 - b. To select G_DRV, press **2**.
 - c. To select B_DRV, press **3**.
 - d. To select R_BKG, press **4**.
 - e. To select G_BKG, press **5**.

- f. To select B_BKG, press **6**.
6. After selecting the White Balance setting, press **ENT** to display the edit screen. The screen displays a “Please input WB items” message.



7. Using the numbers buttons on the remote, enter the Data Value for the White Balance setting (value must be between 1 and 255).
8. Press **ENT** to WRITE (save) the changes.
9. To exit White Balance Adjustment, press **JUMP** or **OPTIONS**

SERVICE ADJUSTMENTS

2-4. CHANGE THE EMITTER OUTPUT LEVEL

Note: To reduce the emitter LED output power strength. Change Date of "SUB" service mode.

- To select 001 TD, press **2** then **5** on the remote.
- To select 000 EMIT_STR, press **1** then **4** on the remote.
- To change data from "0" to "1" press **3** then **6** on the remote.
0: Strong (Default) 1: Weak
- Save and reboot.



2-5. RESETTING THE TV TO FACTORY CONDITION

Use the following instructions to restore the User Adjustments and Channel Memory settings to the preset factory conditions.

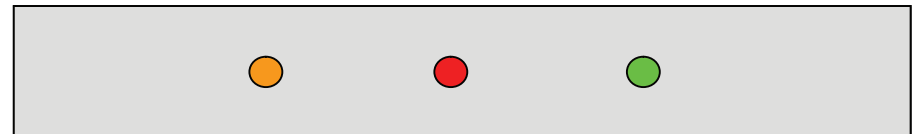
- While holding down the **⇧** on the Remote Commander, press the POWER button on the TV Switch Unit of the set. The set restarts and displays the Initial Setup screen. This may take several minutes.

2-5-1. RESETTING THE TV TO FACTORY CONDITION USING SERVICE MODE

- TV must be in Standby Mode. (POWER off).
- Press the following buttons on the Remote Commander within a second of each other:

DISPLAY → Channel **5** → Volume **+** → **POWER**

- If necessary, press **JUMP** or **OPTIONS** to go to DIGITAL mode.
- Press **8**.
"SERVICE" changes to green RST.
- Press **MUTING**.
RST executes the command and displays EXE.
- Press **0**.
EXE-RST displays green, then red indicating the TV is writing the data.
- When the process is complete the green SERVICE text displays and the LED display as shown below:



TIMER

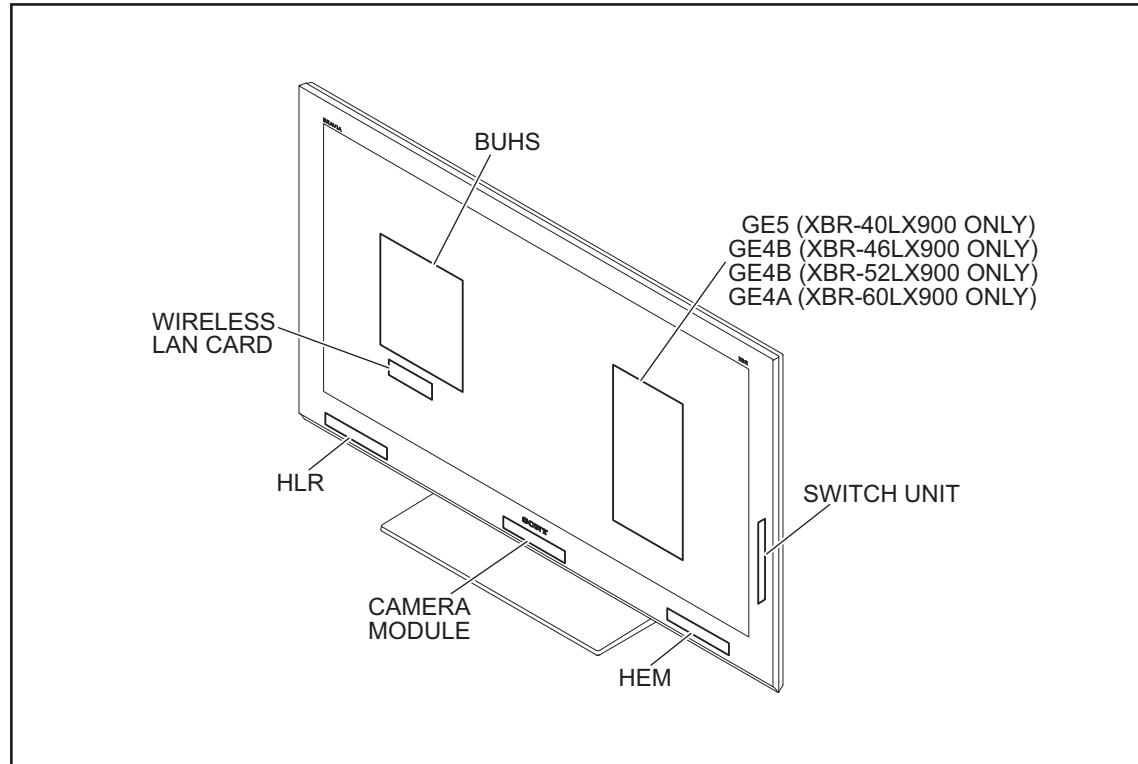
Standby

POWER

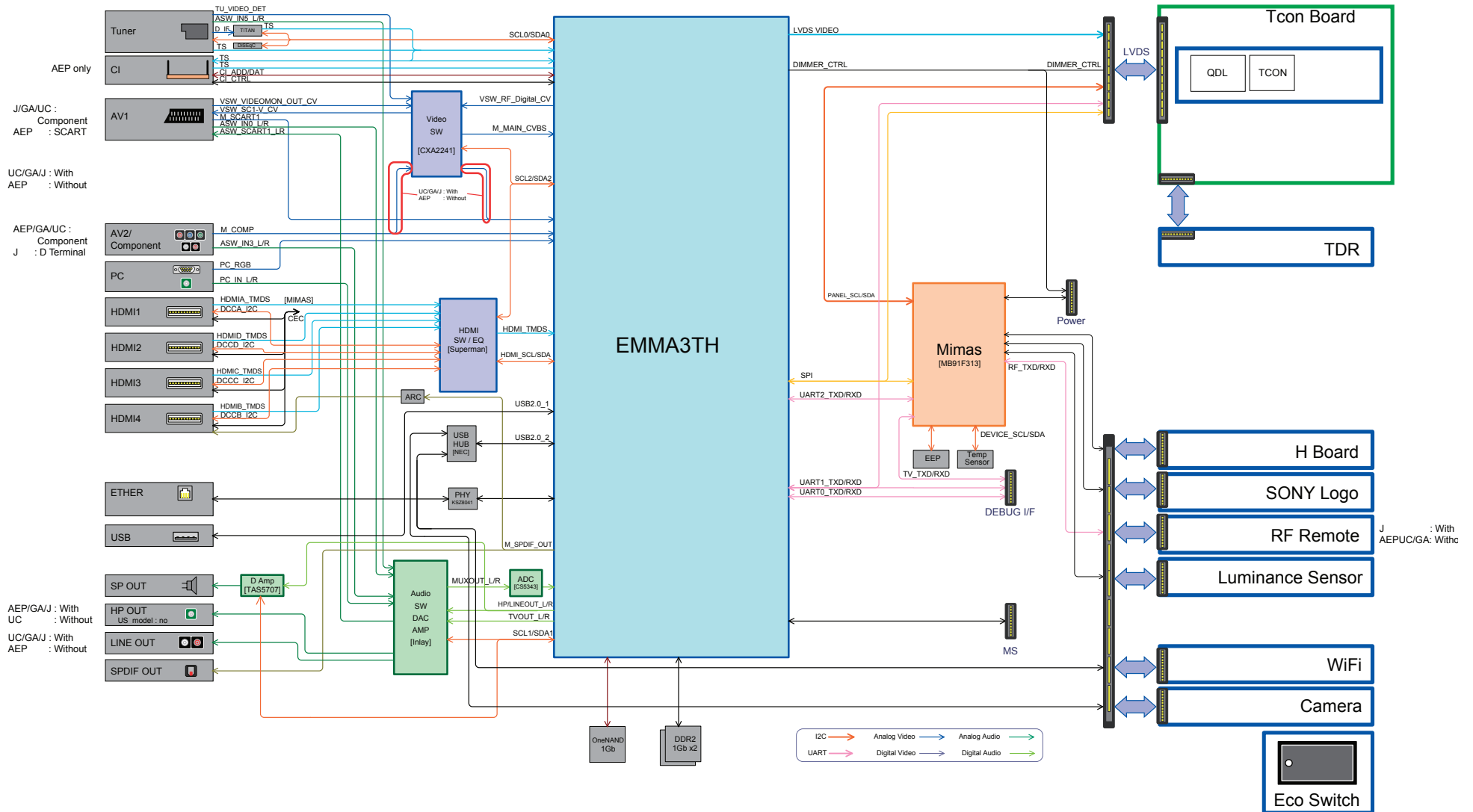
- Cycle AC Power (Unplug and Plug AC Cord from the AC Outlet).
- The set restarts and displays the Initial Setup screen. This may take several minutes.


SEC 3. DIAGRAMS

3-1. CIRCUIT BOARDS LOCATION



3-2. BLOCK DIAGRAM





SONY® is a trademark of Sony Electronics

Reproduction in whole or part without written permission is prohibited. All rights reserved

Sony Corporation
Sony Technology Center
Technical Services
Service Promotion Department

English
2010FJ74WEB-1
Printed in USA
© 2010.6

9-888-330-03

XBR-40LX900/46LX900/52LX900/60LX900

32