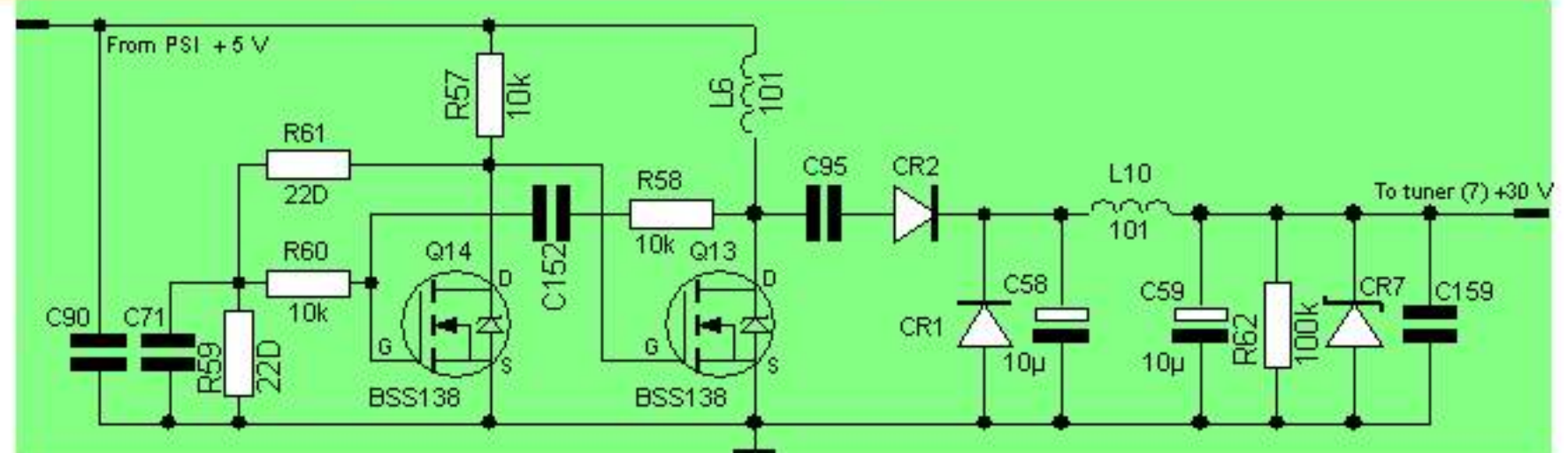


- CR7- 33 V zener diode
 U6 - 3,3 V voltage regulator
 U5 - 5 V voltage regulator
 MOV1 - ?
 F1 - fuse ?
 FL1 - fuse ?
 FL2 - fuse ?
 FL3 - fuse ?
 FL4 - fuse ?
 Q9 - U=30V, I=4,6A
 BSS138 - U=50V, I=0,22A
 U6 - U=3,3V, I=3A
 U7 - 5 V DC/DC Converter



SkyStar2 v2.6b Power