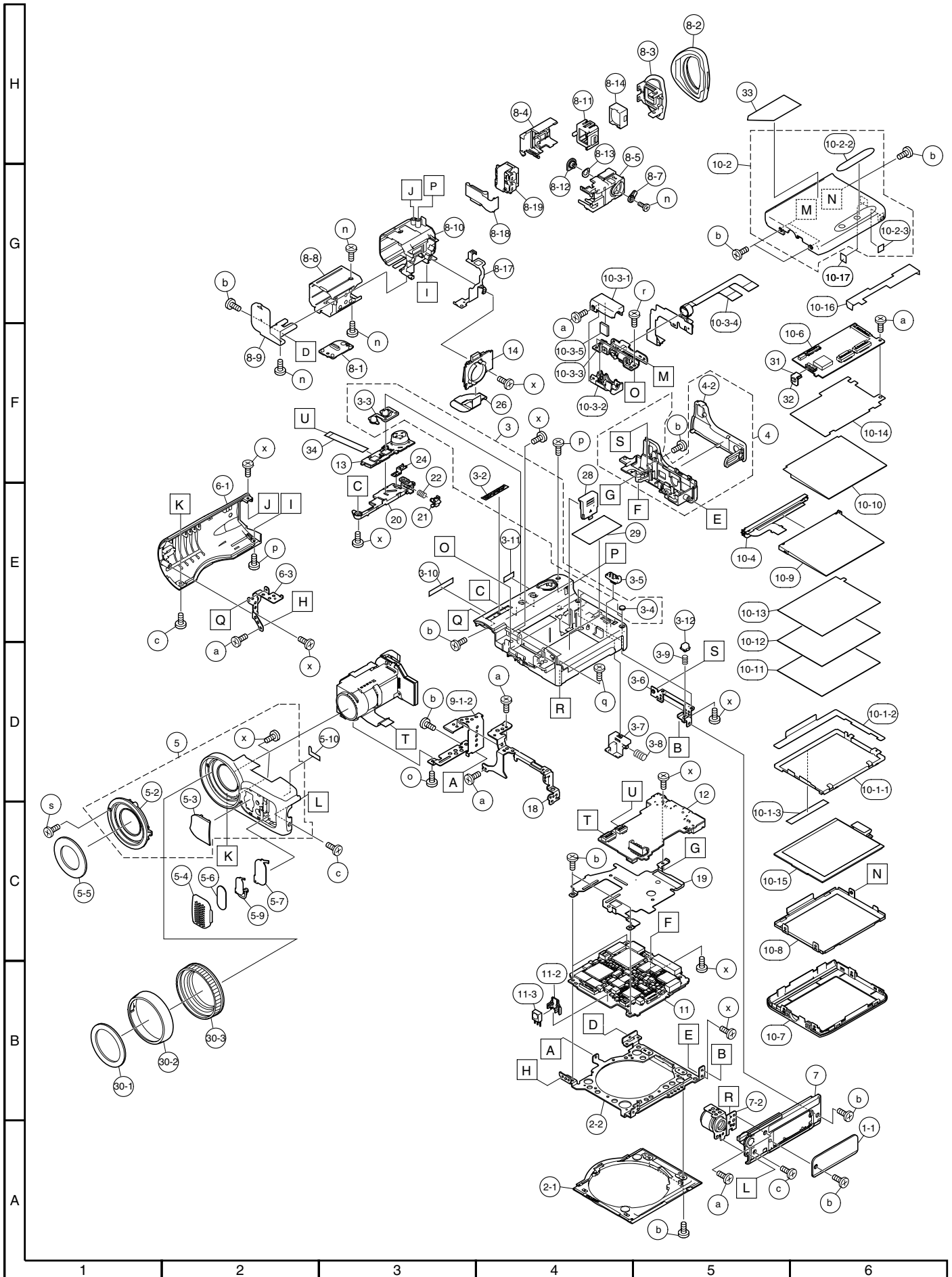


### CABINET EXPLODED VIEW



**VL-Z100S-S/H-S/E-S**  
**VL-Z300S-S/H-S/E-S**

Ref. No.	Part No.	★	Description	Code	Ref. No.	Part No.	★	Description	Code
<b>CABINET PARTS LIST</b>					10-2-2	HDECPA014WJSA		LCD Decoration Plate (Z100S-S/S-S(RS)/H-S/E-S/ E-S(XS))	AC
1-1	GCOVHA035WJKA		Adjusting Cover	AG	10-2-3	PSHEPA099WJZZ		LCD Cabinet Attachment (KS Attachment)	AB
2-1	GCABAA246WJKG		Camera R Cabinet	AK	10-3-1	GCOVAA314WJKH		LCD Tilt Cover(Upper)	AF
2-2	LANGKA120WJFW		PWB Mounting Angle	AG	10-3-2	GCOVAA312WJKH		LCD Tilt Cover(Lower)	AD
3	CCABBA337WJK6		KS Camera L Cabinet (Z300S-S/S-S(AS)/S-S(RS)/H-S/ E-S/E-S(WS))	AQ	10-3-3	LANGKA119WJZZ		LCD Tilt Unit	AX
3	CCABBA337WJK7		KS Camera L Cabinet (Z100S-S/S-S(RS)/H-S/E-S/ E-S(XS))	AQ	10-3-4	QPWBHB736WJZZ		LCD Tilt FPC	AR
3-2	HDECPA015WJSA		SHARP Nameplate	AB	10-3-5	TMAGTA001WJZZ		Magnet	AD
3-3	JBTN-A129WJSA		Display Button (Z300S-S/S-S(AS)/S-S(RS)/H-S/ E-S/E-S(WS))	AE	10-4	CLMPVA003LM01		Lamp Unit	—
3-3	JBTN-A153WJSA		Display Button (Z100S-S/S-S(RS)/H-S/E-S/ E-S(XS))	AC	10-6	DUNTKC118QA01		LCD PWB Unit	—
3-4	PSPAZA185WJZZ		LCD Spacer	AB	10-7	GCOVAA313WJKM		LCD Front Cover	AK
3-5	JKNBPA010WJSA		Battery Lock Knob	AE	10-8	LANGKA118WJFW		LCD Shield Case (Front)	AF
3-6	LANGKA156WJFW		Pop-up Cover Fitting	AD	10-9	PGIDM0036TAZZ		Optical Waveguide	AG
3-7	LHLDZA147WJSA		Battery Lock Holder	AD	10-10	PMiR-A022WJZZ		Reflection Sheet	AC
3-8	MSPRCA019WJFJ		Battery Lock Spring	AA	10-11	PSHEPA076WJZZ		DBEF Sheet	AG
3-9	MSPRCA025WJFJ		Pop-up Cover Spring	AA	10-12	PSHEPA087WJZZ		Prism Sheet	AF
3-10	PSPAHA138WJZZ		Top Face Sliding Spacer	AB	10-13	PSHEPA092WJZZ		Diffusion Sheet	AD
3-11	PSPAZA259WJZZ		Top Face Sliding Spacer B	AB	10-14	PSLDMA283WJZZ		Shield Sheet	AC
3-12	GCOVAA319WJSA		Pop-up Cover	AC	10-15	RLCDDVA002WJZZ		LCD Panel	BN
4	CCABCA015WJK1		KS Terminal Cabinet	AL	10-16	PSHEPA098WJZZ		Lightproof Sheet A	AE
4-2	GCOVAA610WJSA		Terminal Cover	AE	10-17	PSHEPA215WJZZ		Creak-preventive Sheet	AA
5	CCOVAA785WJK1		KS Camera Front Cover	AM	11	DUNTKC364QA50		MAIN PWB Unit (Z300S-S/S-S(AS))	—
5-2	GCOVAA322WJKA		Lens Cover	AF	11	DUNTKC364QA51		MAIN PWB Unit (Z300S-S(RS))	—
5-3	GCOVAA613WJSA		Remote Control Cover C	AD	11	DUNTKC364QA52		MAIN PWB Unit (Z300E-S/E-S(WS))	—
5-4	GCOVAA618WJKH		Microphone Grill	AD	11	DUNTKC364QA53		MAIN PWB Unit(Z300H-S)	—
5-5	HiNDPA696WJSA		Lens Cover Nameplate	AD	11	DUNTKC364QA55		MAIN PWB Unit(Z100S-S)	—
5-6	PCOVPA020WJZZ		Microphone Blind Sheet	AB	11	DUNTKC364QA56		MAIN PWB Unit (Z100S-S(RS))	—
5-7	QEARPA086WJFJ		Microphone Earth Panel	AC	11	DUNTKC364QA57		MAIN PWB Unit (Z100E-S/E-S(XS))	—
5-9	RMiCCA010WJZZ		Microphone Cell	AK	11-2	DUNTKC364QA58		MAIN PWB Unit(Z100H-S)	—
5-10	PSHEZA012WJZZ		Microphone Lead Sheet B	AB	11-3	LHLDZA094WJFW		R/C Element Holder	AF
6-1	GCOVAA379WJKH		Camera Top Cover	AK	12	RRMCUA012WJZZ		R/C	AF
6-3	LANGKA151WJFW		Top Face Cover Fitting	AF	12	DUNTKC368QA50		SUB PWB Unit (Z300S-S/S-S(AS)/S-S(RS)/ H-S/E-S/E-S(WS))	—
7	GCOVAA373WJKP		Camera Bottom Cover A	AD	12	DUNTKC368QA51		SUB PWB Unit (Z100S-S/S-S(RS)/H-S/E-S/ E-S(XS))	—
7-2	LANGKA159WJZZ		Bottom Cover Angle B	AH	13	DUNTKC370PM00		Operation PWB Unit (Z300S-S/S-S(AS)/S-S(RS)/ H-S/E-S/E-S(WS))	—
8-1	GCOVAA330WJSA		VF Dust Removing Window Cover	AC	13	DUNTKC370PM01		OPERATION PWB Unit (Z100S-S/S-S(RS)/H-S/E-S/ E-S(XS))	—
8-2	GCOVAA617WJSA		VF Eye Cap	AH	14	DUNTKC371PM01		LITHIUM PWB Unit	—
8-3	GCOVAA619WJSA		VF Eye Cap Fixing Cover	AD	18	LANGKA130WJFW		Tilt Angle	AF
8-4	GCOVAA620WJSA		VF Slide Top Cover	AE	19	LANGKA131WJFW		Heat Release Angle	AE
8-5	GCOVAA621WJSA		VF Slide Bottom Cover	AE	20	LHLDZA172WJSA		Operation PWB Fixing Holder	AD
8-7	JKNBPA011WJSA		VF Diopter Scale Knob	AC	21	MLEVPA005WJSA		LCD Lock Lever	AC
8-8	LANGGA040WJ00		VF Slide Angle	AK	22	MSPRCA026WJFJ		LCD Lock Spring	AA
8-9	LANGKA213WJFW		VF Fitting Angle	AC	24	QEARPA061WJFW		Operation Unit Earth Plate	AC
8-10	LHLDZA154WJKA		VF Slide Support Holder	AD	26	QPWBHB742WJZZ		Lithium PWB FPC	AE
8-11	LHLDZA295WJZZ		VF Eyepiece Holder	AD	28	GFTABA004WJSA		Lithium Lid	AE
8-12	LHLDZA318WJZZ		VF Diopter Scale Knob Holder	AD	29	TLABMA854WJZZ		Model Label(Z300S-S)	AC
8-13	MSPRPA021WJFJ		VF Diopter Scale Knob Spring	AC	29	TLABMA855WJZZ		Model Label(Z300H-S)	—
8-14	PLNSVA002WJNA		VF Lens	AG	29	TLABMA856WJZZ		Model Label(Z300E-S)	—
8-17	QEARPA087WJFW		VF PWB Earth Panel	AC	29	TLABMA858WJZZ		Model Label(Z100S-S)	—
8-18	QPWBHC376WJZZ		VF FPC	AF	29	TLABMA859WJZZ		Model Label(Z100H-S)	—
8-19	RLCUCA004WJZZ		VF LCD Unit	BG	29	TLABMA860WJZZ		Model Label(Z100E-S)	—
9-1-2	LANGKA125WJFW		Lens Fixing Bracket A	AF	29	TLABMA920WJZZ		Model Label(Z300S-S(RS))	—
10-1-1	LANGKA117WJFW		LCD Shield Case	AF	29	TLABMA921WJZZ		Model Label(Z300S-S(AS))	—
10-1-2	PSHEPA072WJZZ		Lightproof Sheet	AF	29	TLABMA922WJZZ		Model Label(Z300E-S(WS))	—
10-1-3	PTPEHA017WJZZ		LCD Fitting Tape	AC	29	TLABMA924WJZZ		Model Label(Z100S-S(RS))	—
10-2	CCABDA015WJKB		KS LCD Cabinet (Z300S-S/S-S(AS)/S-S(RS)/H-S/ E-S/E-S(WS))	AL	29	TLABMA925WJZZ		Model Label(Z100E-S(XS))	—
10-2	CCABDA015WJKF		KS LCD Cabinet (Z100S-S/S-S(RS)/H-S/E-S/ E-S(XS))	AL	30-1	HiNDPA697WJSA		Lens Inscrption Plate	AC
10-2-2	HDECPA013WJSA		LCD Decoration Plate (Z300S-S/S-S(AS)/S-S(RS)/H-S/ E-S/E-S(WS))	AC	30-2	GCOVAA358WJSH		Lens Hood Outside B	AE
					30-3	GCOVAA382WJSA		Lens Hood Inside	AE
					31	QPWBHB744WJZZ		Hole Sensor PWB	AB