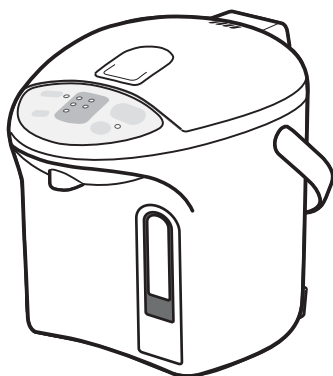


Service Manual

Supplement



Electric Thermo Pot

NC-EH30P

NC-EH40P

Product Color

White (W)

Destination

Russia, Ukraine and Kazakhstan

Specifications

Power Supply			NC-EH30P	NC-EH40P
			Russia, Ukraine and Kazakhstan	Russia, Ukraine and Kazakhstan
			220V	220V
Power Consumption (approx.)	Rated		700W	700W
	Boiling		700W	700W
	Keep Warm		111W	111W
	Average power consumption during keep warm	98°C	45Wh	49Wh
		90°C	39Wh	43Wh
		80°C	31Wh	35Wh
		60°C	21Wh	23Wh
			Average power consumption per hour for keep warm status. (Conditions: Room temperature, water temperature 20°C with rated water volume)	
Capacity (approx.)		3.0L	4.0L	
Dimensions (approx.) (W × D × H)		22.0 × 28.7 × 27.5 cm	22.0 × 28.7 × 32.4 cm	
Weight (approx.)		2.0kg	2.1kg	
Thermal regulation		Boiling : Relay, thyristor Warming : Thyristor } Sensor : Thermistor		
Rotating base		Can rotate 360°C with the power cord		
Thermal fuse		157°C		
Power cord		Approx. 1 m		
Hot water supply device specifications				
Hot water supply method		Electric pump		
Current volume adjustment range		54ml/sec (Constant)		
Operation method		Push switch		
Pump-lock		Electronic lock system (Locked in 10 sec. after switching “Dispense”)		
Hot water pump	Power consumption	1.5W (DC commutator motor)		
	Rated duration	3 minutes		
Additional functions: Dechlorination, keep warm (98, 90, 80, 60), Energy saving timer 6 hours), Overheating protection, Lock/Unlock pad, Citric acid cleaning				

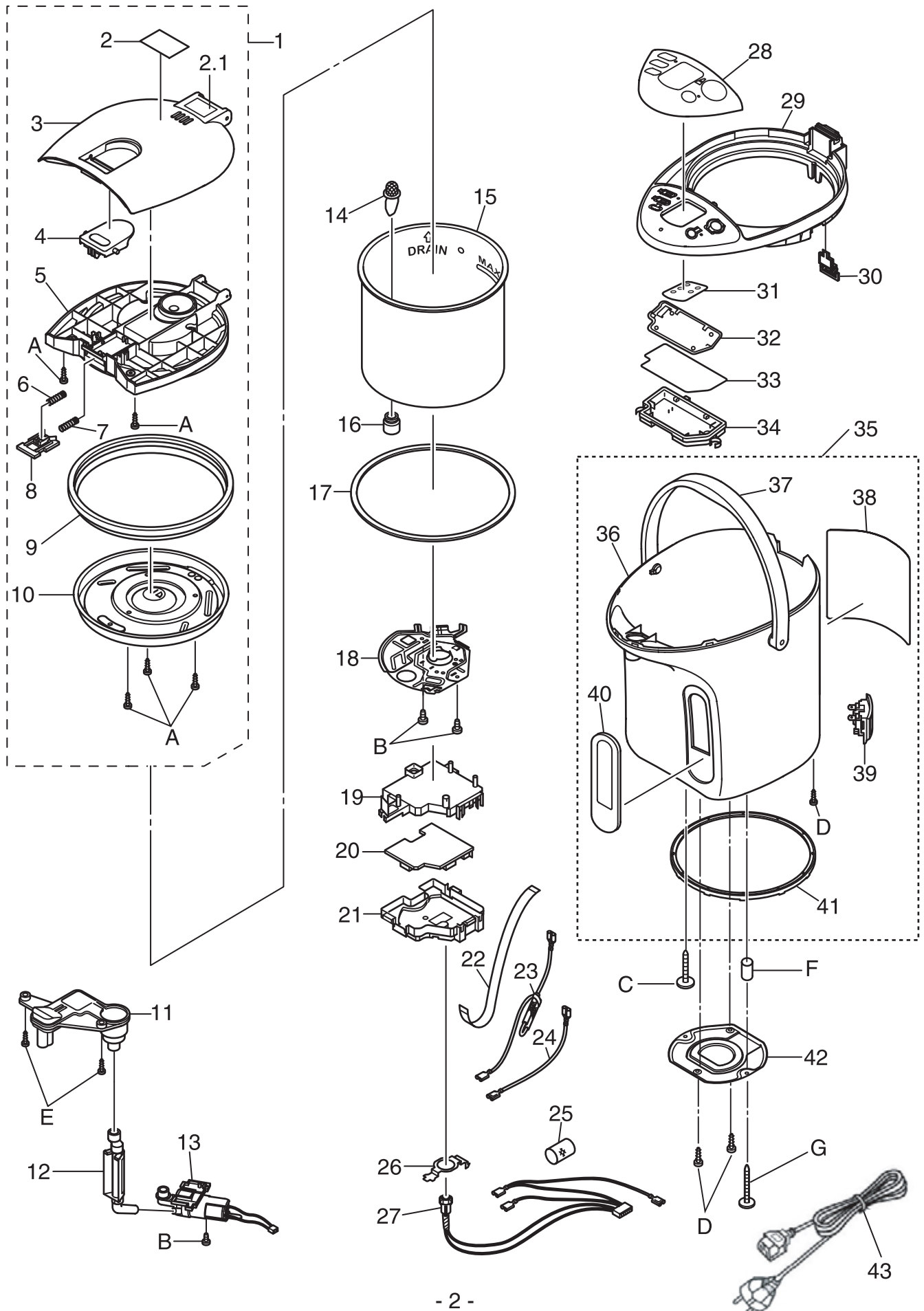
Please use this manual together with the Service Manual Order No. PHAT070511C3

⚠ WARNING

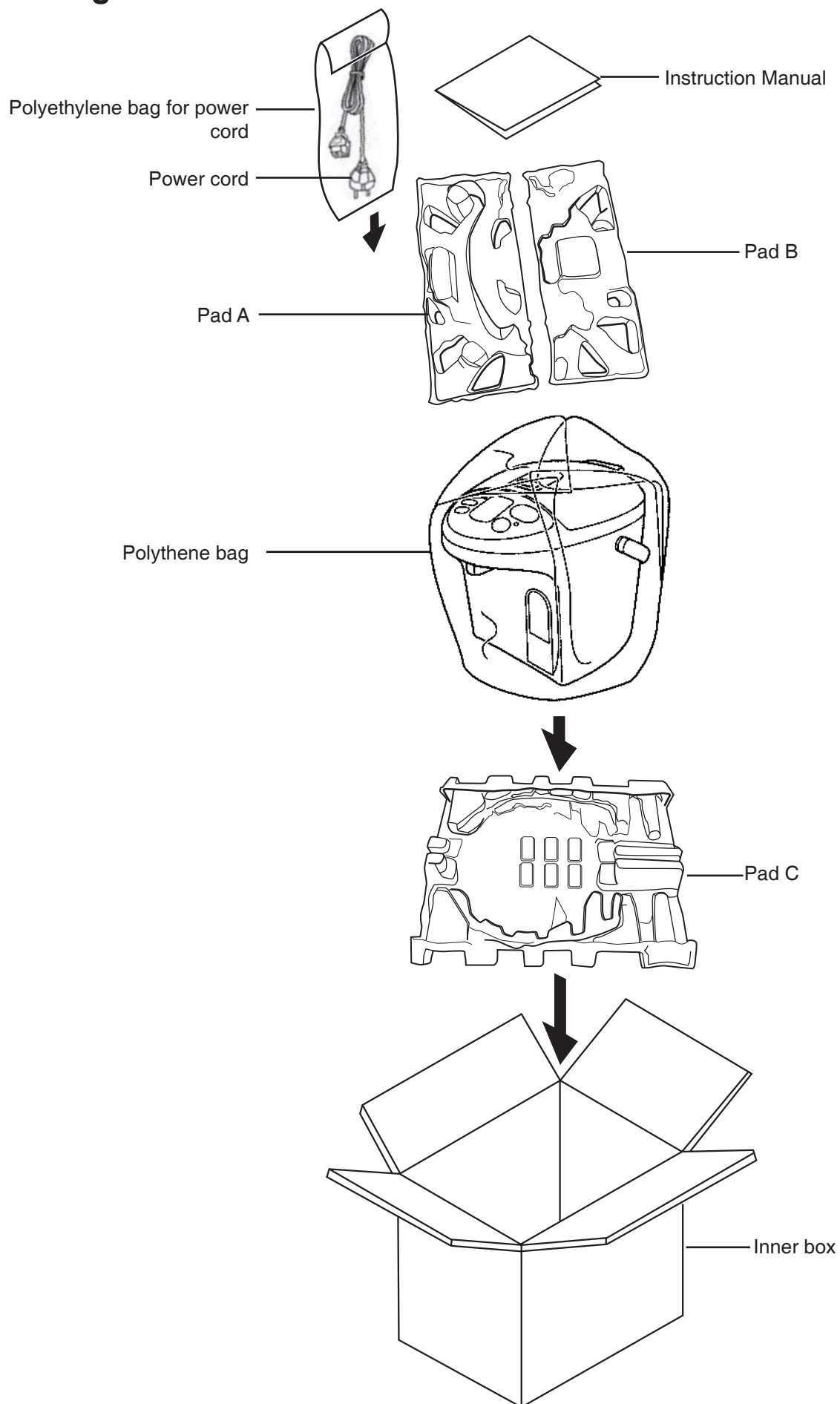
This service information is designed for experienced repair technicians only and is not designed for use by the general public. It does not contain warnings or cautions to advise non-technical individuals of potential dangers in attempting to service a product. Products powered by electricity should be serviced or repaired only by experienced professional technicians. Any attempt to service or repair the product or products dealt with in this service information by anyone else could result in serious injury or death.

1. Parts location and parts list (NC-EH30P / NC-EH40P)

1.1. Development



1.2. Packing List



REPLACEMENT PART LIST (NC-EH30P / NC-EH40P)

Important safety notice :

Components identified by mark have special characteristics important for safety.
When replacing any of these components, use only manufacturer's specified part.

Part List

Ref.No.	Part Name	Part No.	Safety	EH30P	EH40P	Rus,Ukr,Kaz	Remark
1	Lid Comp.	APB01K610-WU		●	●	1	
2	Caution Label A	APY10K488-W1	S	●	●	1	
2.1	Caution Label B	APY11K488-W1	S	●	●	1	
3	Lid	APB01-436-W1		●	●	1	
4	Lock Knob A	APB10-608-W1		●	●	1	
5	Lid Cover Comp.	APB04-577-0U		●	●	1	
6	Lock Spring B	APH12-4802		●	●	1	
7	Lock Spring A	APH11-229		●	●	1	
8	Lock Knob B Comp.	APB11-577-0U		●	●	1	
9	Packing A	APH65-480-H0		●	●	1	
10	Inner Lid	APE07-5771		●	●	1	
11	Case A Comp.	APC01-577-0U		●	●	1	
12	Water Pipe Comp.	APJ01-578-WS		●		1	
		APJ01-579-WS			●	1	
13	Pump Comp.	APM01-53610U		●	●	1	
14	Filter A Set	APB97-50020U		●	●	1	
15	Container Comp.	APE50H608-0U		●		1	
		APE50H609-0U			●	1	
16	Communicating Bushing	APH62-480-X0		●	●	1	
17	Container Packing	APH95-480-X0		●	●	1	
18	Cover Plate Comp.	APE72-580-0U		●	●	1	
19	Board Holder A	APB51-5291	S	●	●	1	
20	Control Unit A	APR30H610	S	●	●	1	
21	Waterproof Cover B	APB65-5292	S	●	●	1	
22	Lead Wire Ass'y E	APN04-58100U		●		1	
		APN04-58200U			●	1	
23	Thermal Fuse Comp.	APS01-57720U	S	●	●	1	
24	Lead Wire Ass'y D	APN09H487-0U	S	●	●	1	
25	Funen-Ban	APG60-578	S	●	●	2	
26	Holding spring A	APE96-436		●	●	1	
27	Thermister Ass'y	APS10-580-0U	S	●	●	1	
28	Decoration Panel	APY02K611-S0		●	●	1	
29	Upper Frame	APB30-577-W1		●	●	1	
30	Lock Lever A	APB33-4801K0		●	●	1	
31	LED Holder	APN08-580		●	●	1	
32	Control Unit B	APR31H610	S	●	●	1	
33	Seal Packing F	APH85-436		●	●	1	
34	Board Holder B	APB52-4361		●	●	1	
35	Body A Ass'y	APB41K611-WU		●		1	
		APB41K612-WU			●	1	
36	Body A	APB41-578-W1		●		1	
		APB41-579-W1			●	1	
37	Handle	APB75-4801W1		●	●	1	
38	Name Plate	APY20K611-W1	S	●		1	
		APY20K612-W1			●	1	
39	Peg Frame Comp.	APB91H4875KU	S	●	●	1	
40	Guage Cover	APY01K611-W0		●		1	
		APY01K612-W0			●	1	
41	Bottom Ring	APB87-480-K0		●	●	1	
42	Bottom Plate	APE76\$5362		●	●	1	
43	Plug Comp.	APN07T51410U	S	●	●	1	

Screws

Ref.No.	Part Name	Part No.	Safety	EH30P	EH40P	Rus,Ukr,Kaz	Remark
A	Pan Head Tapping Screw	XTN4+12CZM		●	●	5	For Inner Lid,Lid Cover
B	Deltite Screw 4x8	ANB1750J999A		●	●	3	For Cover Plate and Pump Comp.
C	Screw	APK51-5291		●	●	1	For Container Comp.
D	Pan Head Tapping Screw	XTN4+12BFJ		●	●	3	For Peg Frame Comp. and Bottom Plate
E	Binding Head Tapping Screw	XTB35+12BFJ		●	●	2	For Board holder B Comp.
F	Sleeve	APK55-608		●	●	1	For Supporting Bottom Plate
G	Truss Head Screw	APK51-5321		●	●	1	For Container Comp.

Packing

Ref.No.	Part Name	Part No.	Safety	EH30P	EH40P	Rus,Ukr,Kaz	Remark
	Carton Box	APZ01K611-W0	S	●		1	
	Carton Box	APZ01K612-W0	S		●	1	
	Pad A	APZ02-608		●	●	1	
	Pad B	APZ03-608		●	●	1	
	Pad C	APZ04-608		●	●	1	
	Instruction Manual	APZ05K610	S	●	●	1	
	Polyethylene Bag	AXZB15X50A15		●	●	1	