

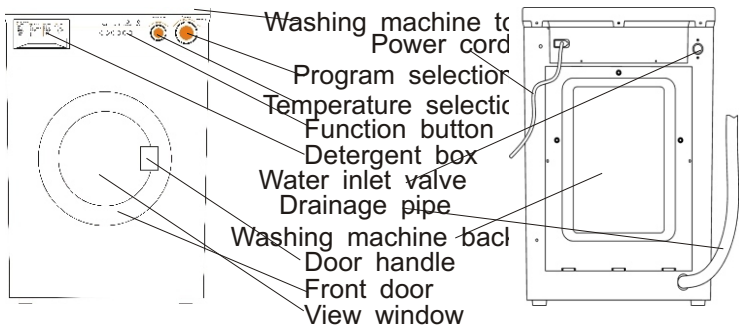
# Elenberg WM-3610M service manual

## Catalogue

- 1. Product photos
- 2. Product specification sheet
- 3. Familiar malfunctions analysis and solving method
- 4. Assemblage
- 5. Cleaning and maintaining
- 6. Wiring circle

## 7. Explosion chart and spare parts chart

### 1. Product photos



### 2. Product specification form

Item	code	WM3610M	Item	code	WM3610M
Power		220V (50Hz)	Washing capacity		3.6
Largest current		7	Washing program		15
Water pressure		0.05≤P≤1	Heating power		800
Water power		240	Washing process		760x420x515
Spinning power		570	Net weight		50

### 3. Familiar malfunction analysis and solving method

#### 3.1Washing machine not starting

##### Reasons analysis

- 1. If the socket accords with needs and if works well
- 2. The door closes intensely or not, and if the switch connects well during

3. The plug wire of motor connects badly or motor damaged

4. Pressed the power button or not

Solving method:

1. Check the power plug and socket, and make them connect well

2. Check the door closes well or not, and the door indicator light bright or not

3. Clamp the motor plug wire or change the motor

4. Check the power button pressed or not

### 3.2 Washing machine not inletting water or overtime taking water

Reasons analysis:

1. Water level is too low or the tap is not turn on

2. The front door closed well or not

3. Water inlet electromagnetic valve malfunction

4. Water level switch malfunction

Solving method:

1. Recheck:

a. The tap turned on or not

b. If the water inlet pipe kinks, jammed and not inletting water;

c. The electromagnetic valve jammed or not

d. The front door closed well or not

e. Water pressure lower than 0.05 Mpa or not

2. Door hook and lock connect well or not; if not, adjust it; check if the switch is good under the electrify state while

3. Check the electromagnetic valve good or not and fastens it.

4. When you huff the water level switch, it should be with sound of snick

### 3.3 Washing machine jolts and with high noises

Reasons analysis:

1. Packing nuts are not unloaded

2. Washing machine is too near to the wall

3. Washing machine is loaded more than its rated capacity

4. Machine inside has eyewinkers

5. Washing machine is placed flat or not

6. The bolts and nuts inside become flexible

7. The strap loosens

Solving method:

1. Unload the packing nuts

2. Adjusting the distance between washing machine and wall

3. Reducing the cloths loading

4. Disposing of the eyewinkers

5. Adjusting the washing machine to flat state

6. Fasten the bolts and nuts inside, including:

b. Weight block fitting bolts

c. Heating pipe nuts

7. Increasing strap tension

### 3.4: The tub do not turn

Reasons analysis:

1. The strap tension is small

2. The motor plug wire becomes flexible or the motor damaged
3. Program set under "stop" state
4. Programmer controlled system is abnormal
5. The capacitor is not good

Solving method:

1. Change the strap
  2. Check the motor plug wire loose or not and if the motor is normal. If not, change it
3. Check the program set correct or not
4. Check the programmer controlled system is normal or not, and change it if not
5. Check the capacitor is good or not, and change it if not

### 3.5 Inletting water level is high

Reasons analysis:

1. Water pressure system pipeline problem
2. Water level switch malfunction

Solving method:

1. Check if the pressure system jammed or gas leaked; pressure system including
  - a. gas gather valve
  - b. rubber pipe
  - c. pipe clamp
2. Check if the pressure switch is normal, and change it if not

### 3.6 Users ammeter fuse fusing or the air switch trips

Reasons analysis:

1. The capacity of ammeter is small
2. The plug problem
3. The electric device is short circuit

Solving method

1. Check the capacity of the ammeter
2. Check if users plug is with phenomena of striking fire and short circuit
3. If there is something wrong with electric device due to water leaking short circuit and contacting striking fire, replace it in time.

### 3.7 Not heating, automatically heating

Reasons analysis

1. Temperature sensor malfunction or climate influence
2. Heating pipe malfunction

Solving method:

1. Check if temperature sensor works under normal state
2. Check the water-heating pipe and if the resistance wire is normal otherwise, change it

### 3.8 Washing machine water leaking or overtime taking water

Reasons analysis:

1. There is water leaking problem in canilage connecting
2. Water leaking in outside tub

Solving method:

1. Check if all parts of the canilage connecting damaged and not rigorous
  - 1-Water inlet pipe
  - 2-Soft pipe from electromagnetic valve to distributing ware
- 3-soft pipe from distributing ware to outside pipe
- 4-View window mat
- 5-Soft pipe from outside tub to pump
- 6-Drainage pump
- 7-Gas Gather Valve

8-Distribute Parts

2. Distribute Parts not working normally

### 3.6 water distribute parts is unnormal

Reason analysis:

1. The strap between the distribute parts and electromagnetically operated valve is blocked.
2. The faucet of water storage tank is not good.
3. The electromagnetically operated tank is blocked.
4. The electromagnetically operated valve is reversal

The way of resolve:

1. If the soft strap in good status
2. Change the water storage tank
3. Clean up the filter of the electromagnetically operated valve
4. Check the wire

### 3.7The out tube with electric

Reason analysis:

1. Check that the circuitry is good or change it
2. Check that the earth wire is take on
3. Check the wire skin was broken

The way of resolve:

1. Check the circuitry. If it is broken or change it
2. Set earth wire properly
3. Check the cover of wire or change it

### 3.8The machine won't drying and drainage

Reasons analysis

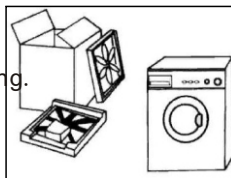
1. Check the dehydration procedure if that has been set when choice the process.
2. Check the wire loop for drying has broken.
3. The matter of draining pump.
4. The matter of drain pipe

Check way:

1. Check again:
  - a. If the strap is block.
  - b. Check the drainpipe, if the height of it at 80-100cm.
  - c. Check the process your setting.
2. Check the wire of N. L
3. Chang the strap between the out tube and pump
4. Check the motor connection wire.

## 4. INSTALLATION

- Remove the all of the shipping package (foam, motor supporter, shipping block), in case will be quivering when it is in using. That will be normal phenomena if there is some water drops, for that is for checking before package.

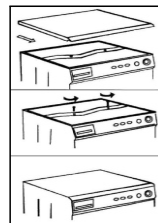


- Check the spares and documents attached as showing

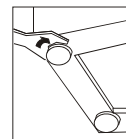
Name	Instruction manual	Reminding card	Whole intake pipe	Bracket of Draining pipe
Num	1	1	1	1

- Removing the shipping bolts as charts 3

1. take the top cover down
2. Loosen and take the two bolts down from the fasten stand, the spring block under the stand also be taken out.
3. Install the cover as before (Keep the shipping bolts and spring block for future shipment use)



- Adjusting the leveling feet  
If the floor is uneven, loosen the leg bolt by turning it with your hand until it is at the desired height. Then tighten the lock nut by turning it with the wrench. As chart 4.



- Connecting the water supply hose

Check the water intake head the length is properly, the length should at least be 10mm.

- Connecting the water intake head and water supply hose

- a. Hold the constrictive pole and press the slider down taking down the intake hole connection. As chart1
- b. Loosen the four bolts until can set the faucet on. As chart 2

- check the connection between intake hose and faucet

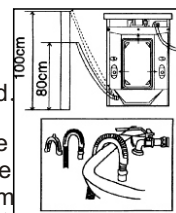
- a. Check it the intake hose is tighten
- b. Check if the faucet is leakage
- c. Check the hose no twist hard
- d. Check the connection everytime befor use it

- Disassemble the intake hose

Close the faucet befor Disassemble it

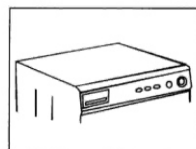
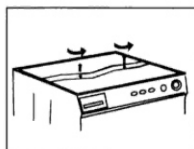
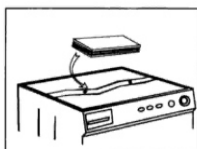
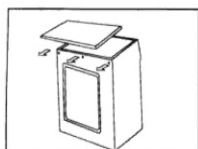
- Draining pipe

1. The height of the draining pipe is at 80-100cm, and should be fixed back of the machine.
2. Assemble the draining pipe using the bracket attached, make the fixing place in case it over flowed. Lay it securely with water-repellent cable. Please contact the after service if you are want to lengthen the drain pipe or won't do that. Please do not lengthen it over 250cm (too long to easy to drain water while entering water.) The diameter of the lengthen part should same with the washing machine's



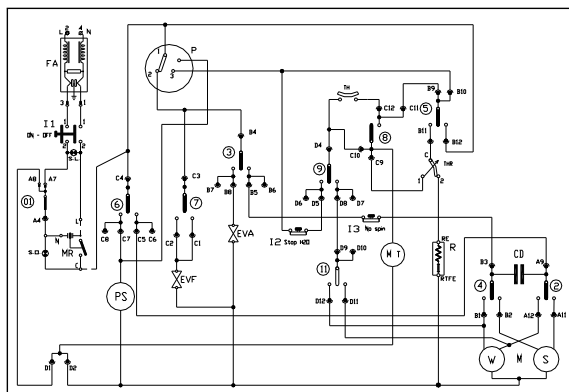
## 5. Cleaning and maintaining

1. after washing, close the tap, pull out the power plug and open the view window to prevent moisture and peculiar smell. Put the drainage pipe lower and make the water in pump blow out if washing machine has not used for a long time would induce peculiar smell. Put the drainage pipe at the previous place after draining.
2. When cleaning and maintaining, you should pull off the plug first. During cleaning machine body and rubber articles, you only need dip little soap liquid with dishcloth. Please keep in mind that you cannot use impregnant and cauterant to wipe.
3. Cleanout the detergent dispenser often: the dispenser belongs to drawer style. When cleaning, pull out the dispenser first, lift it softly a bit, draw it out and clean it before fixing it.
4. Cleanout the inlet pipe tie-in and filtering net often, in case impurity in water jam the tie-in.

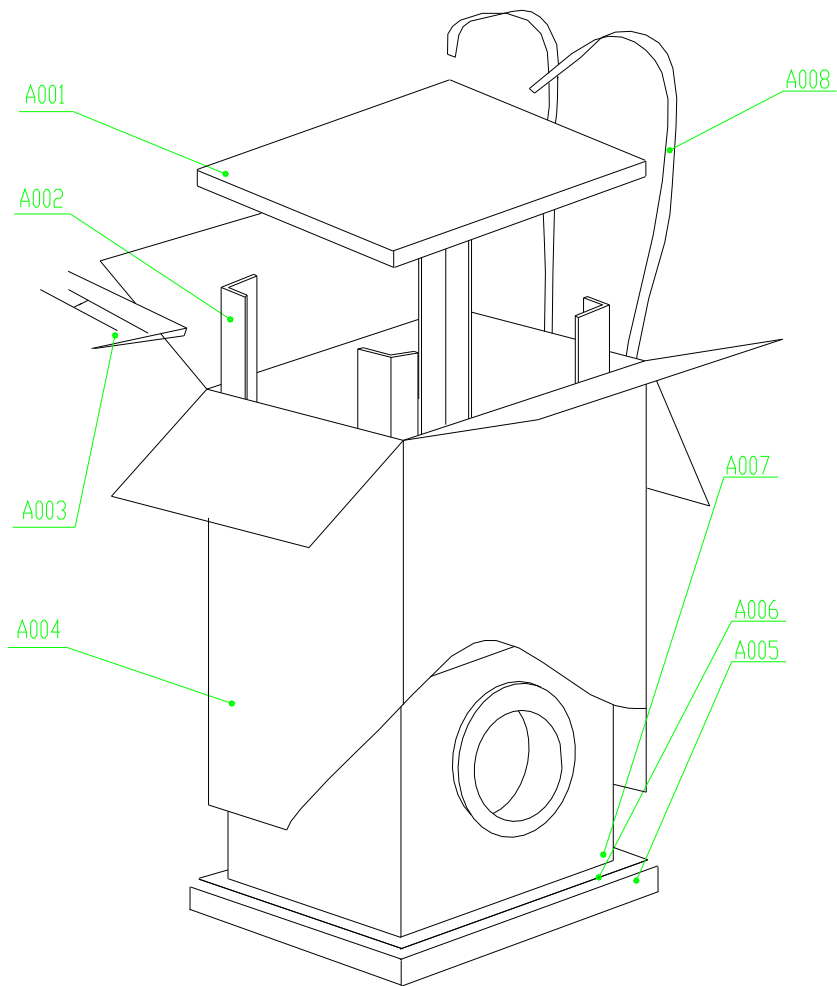


5. If washing machine has not been used for a long time, please pull out the plug, close the tap and open the front door, in case peculiar smell would be induced. Also open the door often when not using the machine.
6. When you move home, load the quakeproof groupware refer to methods hereafter

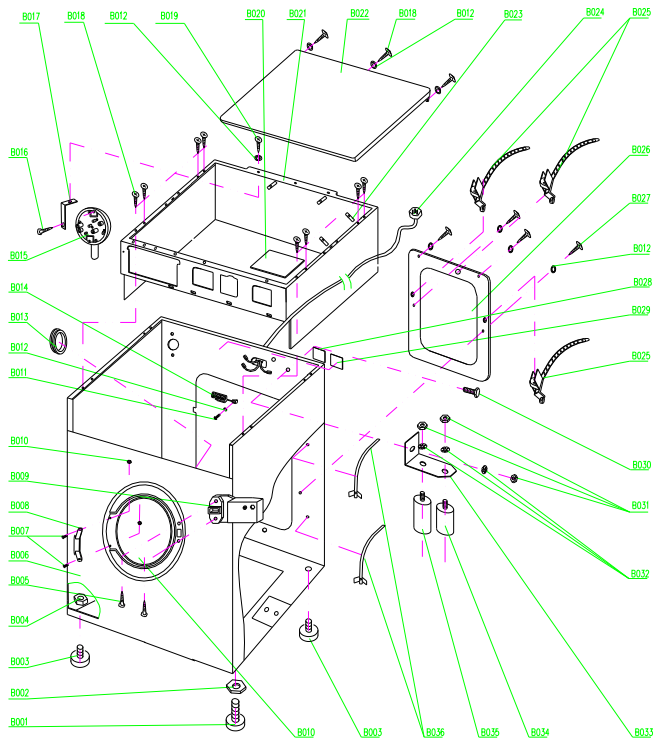
## 6. Electric circuits theory chart



7. Explosion chart and spare parts chart

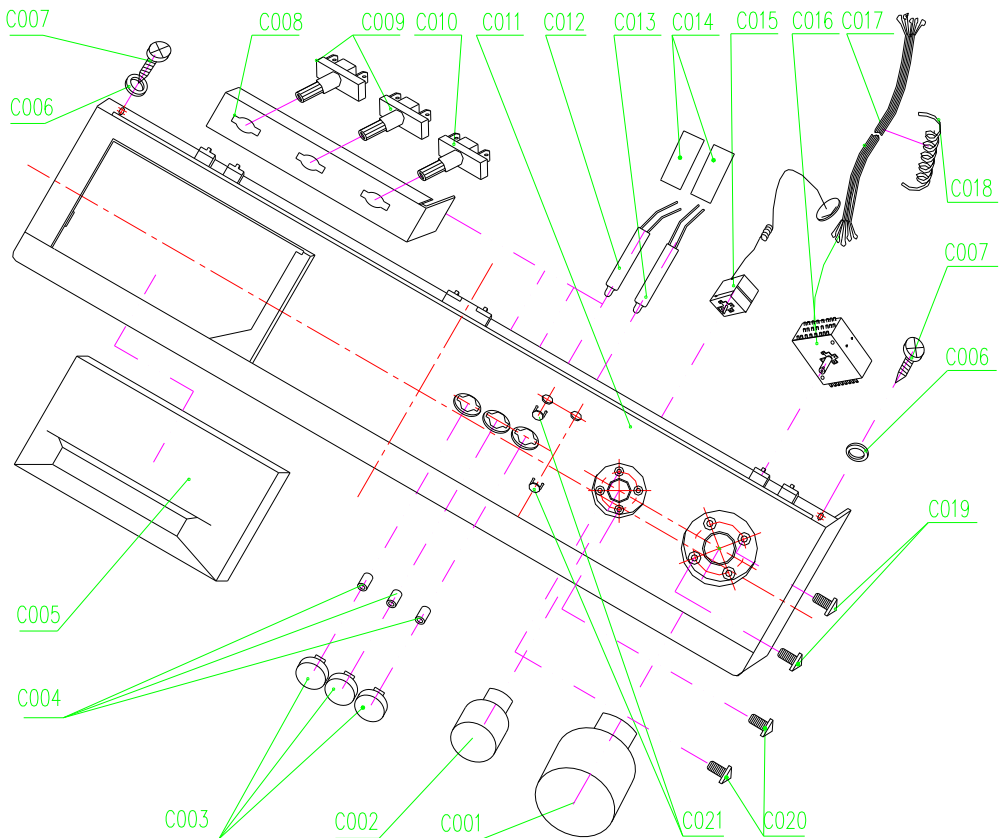


SEQUENCE NUMBER	NAME	NUMBERING	QUANTITY
A001	package top cover	QS600G0715	1
A002	corner fitting	QS600G0714	4
A003	accessory	QS600G0801	1
A004	packing case	QS600G0711	1
A005	package culet culet tray	QS600G0712B QS600G0713	1
A006	packing bag	QS600G0028	1
A007	packing strap	GB12023	10. 5m

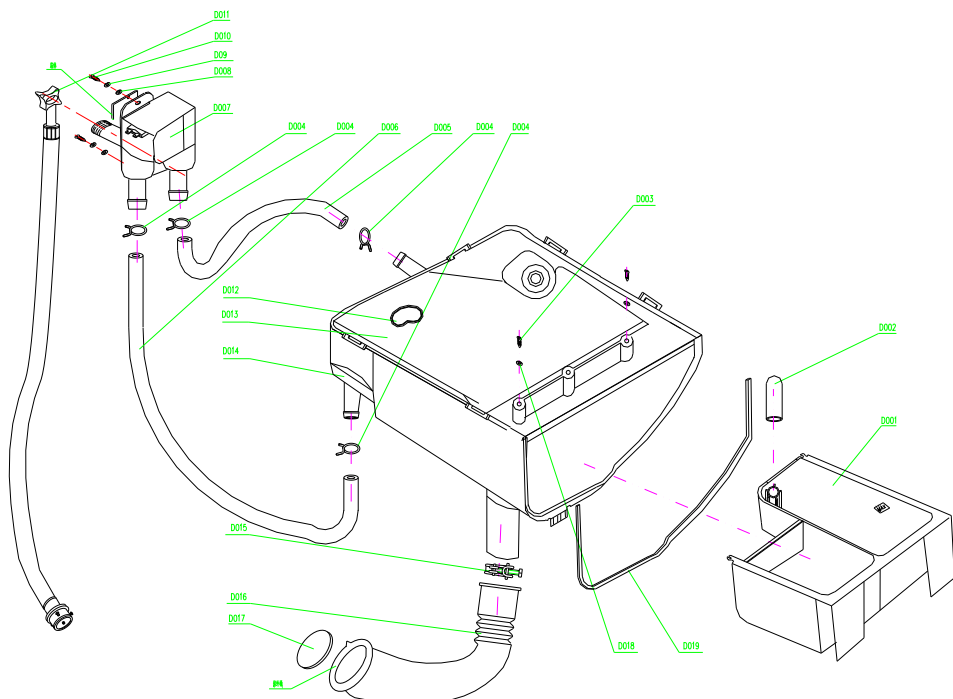


SEQUENCE NUMBER	NAME	NUMBERING	QUANTITY
B001	body footing A	QS600G0138A	1
B002	feet adjusting nut	QS600G0160	1
B003	body footing	QS600G0138	3
B004	hexagon nut	GB6170	3
B005	Cross recess pan head tapping screw(bolt) ST4. 2X16	GB845	2
B006	body	QS600G0111	1
B007	bolt M5X16		2
B008	door gemel	QS600G0121	1
B009	automatic door-lock	QS600G0134	1
B010	locknut M5		2
B011	hexangular self tapping bolt	GB5285	1
B012	even washer 5	GB97. 1	8
B013	drainage pipe plug	QS600G0112	1
B014	power cord ringer	QS600G0117	1
B015	water level relay	QS600G0016	1
B016	Cross recess pan head tapping screw(bolt) ST4. 2X9. 5	GB845	1
B017	water level switch fitting board	QS600G0136	1
B018	Cross recess pan head tapping screw(bolt) ST4. 2X16	GB845	9
B019	Cross recess pan head tapping screw(bolt) ST4. 2X13	GB845	1
B020	programer controlled system water-proof film	QS600G0161	1
B021	upholding tank	QS600G0130	1
B022	top cover	QS600G0031	1
B023	strapping tape 3X120		4
	strapping tape 3X150		2
	strapping tape 2. 5X100		6
B024	power cord	QS600G0015	1
B025	cord card	QS600G0113	2
B026	body back cover	QS600G0027	1
B027	Cross recess pan head tapping screw(bolt) ST4. 8X13	GB845	2
B028	nameplate	QS600G0119	1
B029	bar code	QS600G0157	1
B030	hexagonbolt M8X16	GB5782	1
B031	hexangular nut	GB6170	3
B032	Outside sawtooth lock washer 8	GB862. 2	2
B033	appliance board	QS600G0126	1
B034	Noise filter	QS600G0139	1
B035	caparitance	QS600G0133	1
B036	drainage pipe bracket	QS600G0129	3

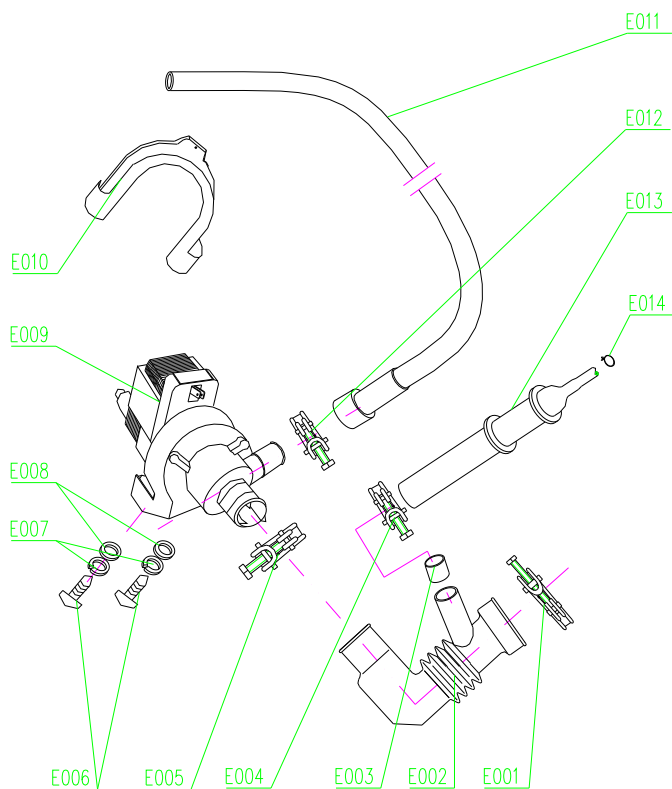




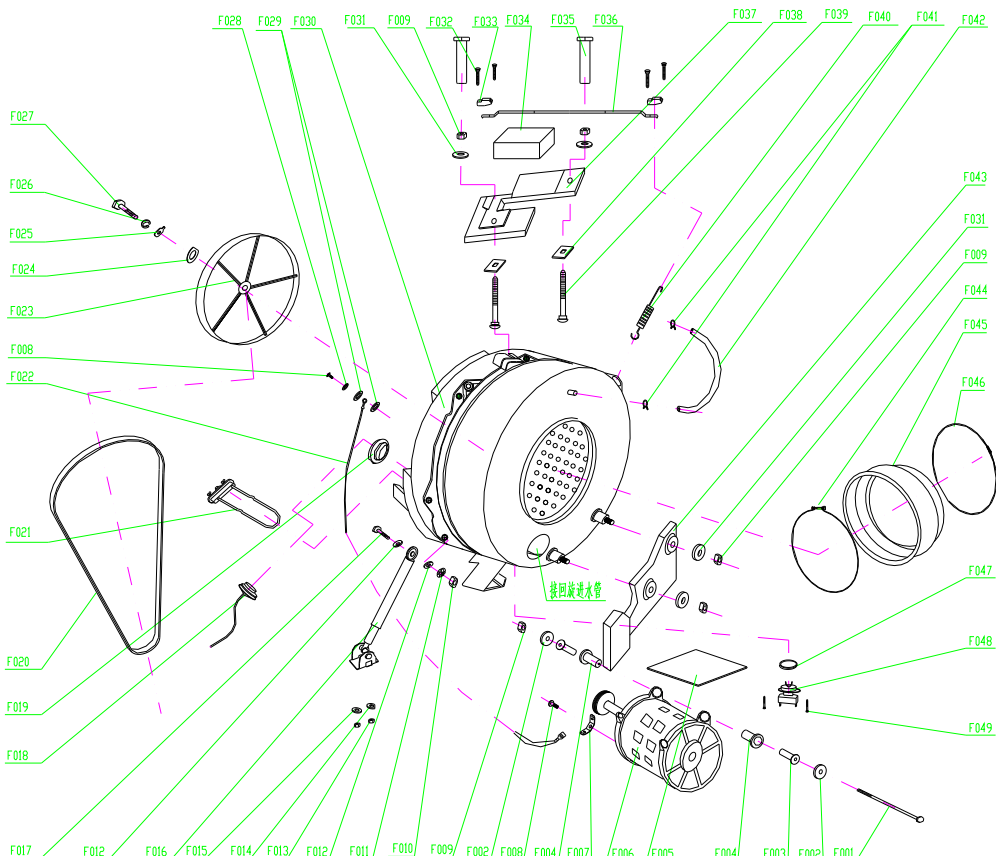
SEQUENCE NUMBER	NAME	NUMBERING	QUANTITY
C001	programmer controlled system knob assemblage	QS600G0005	1
C002	temperature regulator knob assemblage	QS600G0006	1
C003	button	QS600G0412	3
C004	drawer cover	QS600G0314	1
C005	Outside sawtooth lock washer 5	GB862. 2	2
C006	Cross recess pan head tapping screw (bolt) ST4, 2X16	GB845	2
C007	Burning stopper	QS600G0427	1
C008	single keyboard switch	QS600G0417	2
C009	keyboard switch	QS600G0013	1
C010	operating board	QS600G0411	1
C011	power indicator light	QS600G0037	1
C012	door-lock indicator light	QS600G0035	1
C013	indicator light jacket	QS600G0428	2
C014	temperature regulator	QS600G0426	1
C015	programmer controlled system	QS600G0418	1
C016	wiring harness	QS600G0428	1
C017	wiring harness	QS600G0039	1
C018	Cross recess countersunk head bolt	M5X8 GB819	2
C019	Cross recess countersunk head bolt	M4X8 GB819	2
C020	indicator translucent cover	QS600G0036	2



sequence number	name	numbering	quantity
D001	detergent box drawer	QS600G0313	1
D002	siphon	QS600G0318	1
D003	ST4. 2X16	GB845	2
D004	collar 14.8		4
D005	inside water inlet pipe A	QS600G0024A	1
D006	inside water inlet pipe	QS600G0024	1
D007	water inlet valve	QS600G0017	1
D008	even washer 4	GB97.1	4
D009	spring washer	GB93	2
D010	M4X10	GB818	2
D011	water inlet pipe	QS600G0811	1
D012	fitting plug	QS600G0319	1
D013	detergent box top cover	QS600G0311	1
D014	detergent box bottom cover	QS600G0312	1
D015	snap ring 46		1
D016	whirly water inlet pipe	QS600G0029	1
D017	whirly water inlet pipe accessories	QS600G0247	1
D018		QS600G0320	1

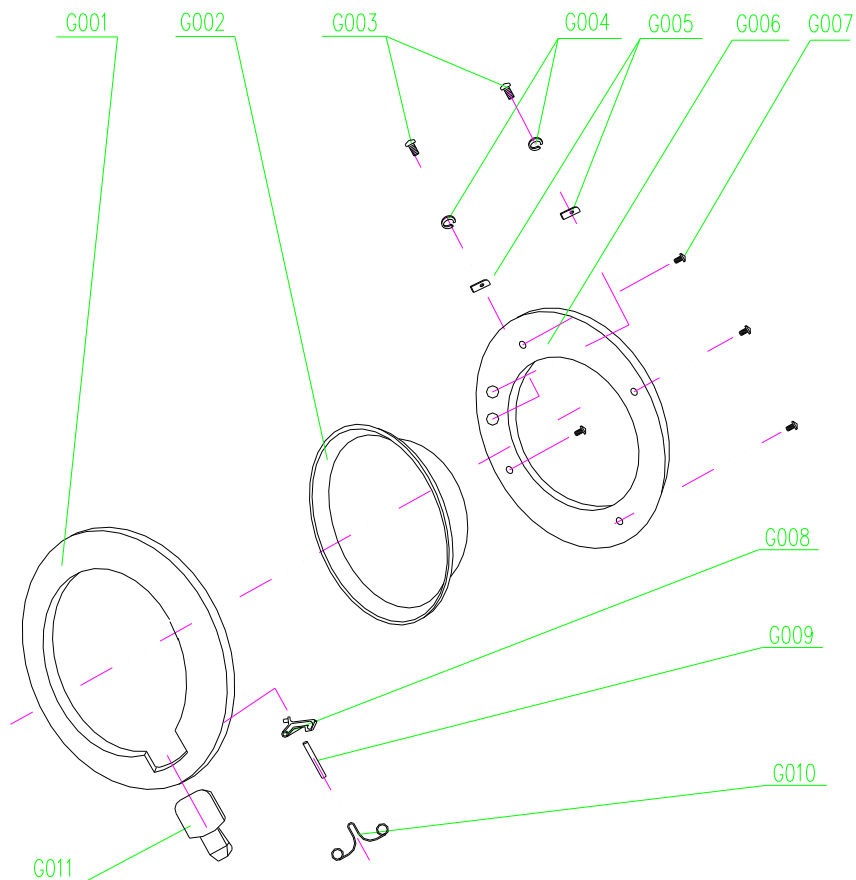


SEQUENCE NUMBER	NAME	NUMBERING	QUANTITY
E001	snap ring 68		1
E002	ripple pipe	QS600G0228	1
E003	water level pipe bush	QS600G0234	1
E004	snap ring 29		1
E005	snap ring 42		1
E006	hexangular M6X16	GB5783	2
E007	spring washer 6	GB93	2
E008	even washer 6	GB97. 1	2
E009	drainage pump	QS600G0127	2
E010	drainage pipe bracket	QS600G0158	1
E011	drainage pipe	QS600G0128	1
E012	snap ring 38		1
E013	water level pipe	QS600G0233	1
E014	collar 7. 8		1



SEQUENCE NUMBER	NAME	NUMBERING	QUANTITY
F001	hexangular bolt M8X215	GB5782	1
F002	even washer 8	GB97.1	2
F003	short bush	Q3600G0237	2
F004	motor bush	Q3600G0238	2
F005	motor water proof film	Q3600G0289	1
F006	motor	Q3600G0235	1
F007	motor ground line	Q3600G0291	1
F008	Cross recess pan head tapping screw M4X10	GB818	2
F009	locknut M8	GB889	5
F010	locknut M10	GB889	2
F011	Outside sawtooth lock washer 10	GB862.2	2
F012	even washer 10	GB97.1	4
F013	locknut M6	GB889	4
F014	washer	Q3600G0046	2
F015	big washer 6	GB96	2
F016	Shock absorber assembly	Q3600G0204	2
F017	hexangular bolt M10X55	GB5782	2
F018	temperature regulator	Q3600G0426	1
F019	temperature regulator ornament	Q3600G0246	1
F020	strap	Q3600G0239	1
F021	heater	Q3600G0217	1
F022	ground cord		1
F023	belt pulley	Q3600G0238	1
F024	shaft filler washer	Q3600G0286	1
F025	tab washer with long tab 8	GB54	1
F026	spring washer 8	GB93	1
F027	hexangular bolt M8X16	GB5782	1
F028	spring washer 4	GB93	1
F029	washer 4	GB97.1	2
F030	Outside tub assembly		1
F031	weight block washer	Q3600G0246	4
F032	Cross recess pan head tapping screw ST4.2X16	GB45	4
F033	skate	Q3600G0244	2
F034	foam filling block	Q3600G0108	1
F035	transportation fitting nut	Q3600G0026	2
F036	transportation fitting board	Q3600G0242	1
F037	above weight block	Q3600G0241A	1
F038	quadrate washer	Q3600G0219	2
F039	big semicircle-head quadrate bolt M8X7.5	GB14	2
F040	hang spring	Q3600G0243	2
F041	collar 14.8		2
F042	windpipe	Q3600G0230	1

F043	front weight block	QS600G0240	1
F044	lock ring	QS600G0232	1
F045	door-hermetic pedestal ring	QS600G0231	1
F046	lock spring	QS600G0030	1
F047	0 model circle of thermostat	QS600G0215	1
F048		QS600G0214	1
F049	ST4. 2X9.5	GB845	2



SEQUENCE NUMBER	NAME	NUMBERING	QUANTITY
G001	door outside loop	QS600G0511	1
G002	view window glasses	QS600G0513	1
G003	cross recessed pan head screw M4X10	GB818	2
G004	spring washer 4	GB93	2
G005	front door fitting film	QS600G0029	2
G006	door inside loop	QS600G0512	1
G007	Cross recess pan head tapping screw ST4.2X11	GB846	4
G008	door grapnel	QS600G0514	1
G009	handle pin	QS600G0515	1
G010	grapnel spring	QS600G0516	1
G011	door handle	QS600G0517	1