



Philips Consumer Lifestyle

Service Manual

PRODUCT INFORMATION

- This product meets the requirements regarding interference suppression on radio and TV.
- After the product has been repaired, it should function properly and has to meet the safety requirements as officially laid down at this moment.

TECHNICAL INFORMATION

- Colour : Blue bonnet
- Power consumption : 1800 W
(IEC) 230V
- Maximum Air displacement : 43 l/s
- Vacuum : 300 mbar / 30.0 kPa
- Type number dustbag : FC8021
- Duststorage capacity : 3 L
- Cord length : 7 m
- Filter system : Classic S-Bag
long performance
: 3 layer permanent motor
protection filter
: Ultra clean air washable
HEPA13 exhaust filter
- Dimensions of cleaner : 449 x 324 x 250 mm
- Dimensions of packaging : 593 x 393 x 296 mm
- Net weight : 5.7 kg

ACCESSORIES

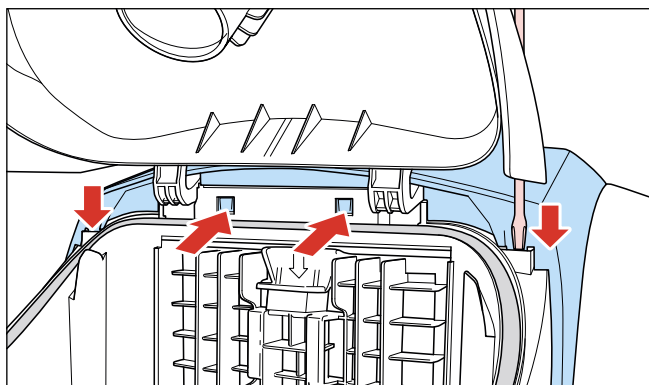
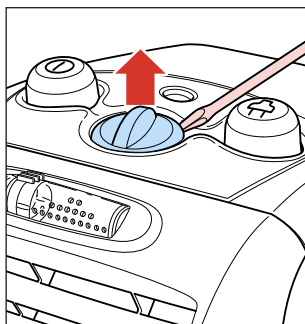
- Nozzle : Tri-Active all purpose nozzle
- Tubes : Metal lacquered telescopic tubes
- Accessories : Crevice nozzle and small nozzle
- Accessory storage : Accessory clip on tube
- Coupling : Button coupling

OPTIONAL (accessories)

- FC8021 : S-bag Classic
- FC8022 : S-bag Clinic
- FC8023 : S-bag Anti-Odour
- FC8025 : S-fresh scent granules
- FC8031 : Super Clean Air HEPA filter,
HEPA12 exhaust filter
- FC8038 : Ultra clean air washable HEPA13
exhaust filter

DISASSEMBLY- AND RE-ASSEMBLY ADVISE

- To open the appliance,
First remove the filter cover
(item 24) then remove the
vario knob button (item 11)
with a screwdriver as shown
in the picture.

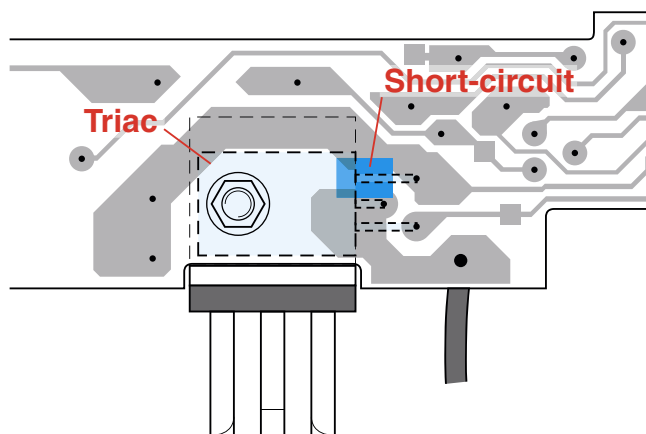
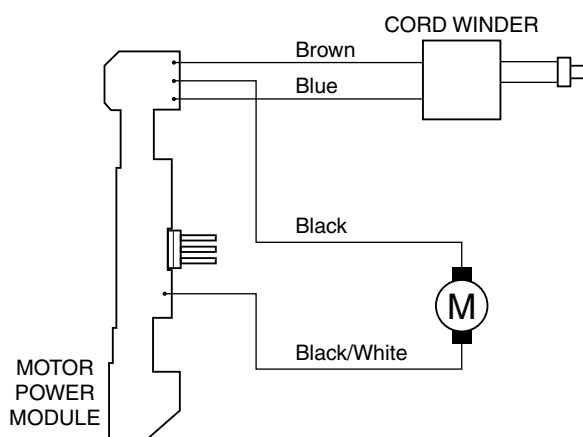


- To remove the button panel (item 13), first loosen
mounting screws (A), now by using a screwdriver unlock
the 4 snap connection and separate the panel from the
housing. (see picture)
- Display cover (item 12) now can easily be removed from
the button panel.)
- To remove the motor, you need a torx screwdriver with a
14.5cm long shank. Screwdriver 9965 000 08332 can be
used.

REPAIR INSTRUCTION

- Cotton dustbags, are used in countries in which paper
dustbags are not available.
- If the reel half spring unit is replaced, shaft **G** must be
lubricated with **silicone grease**. Do not apply any silicone
grease to or spill any grease on terminals (39) or conductors
(38).
- **Item 37** is provided with a long cord-winder spring, but
both long and short cords can be used in combination with
this spring. (L = 9.3 m)
- Depending on the original cord, the spare cord must be
shortened to the length of the original cord.
- The cord winder spring must be tensioned to the maximum
level and then be rewound approx. 1.5 turn
- **Item 10**, air valve, opens to cool the motor if the air
displacement is too low or if the airflow is blocked.
- To adjust the telescopic tube (item 46) to the required
length, push the adjustment collar in the direction of the
arrow while sliding the top section of the telescopic tube
into or out of the lower section.
- If the function of the electronic control unit (item 15) is
not required, the Triac must be short-circuited in the
manner shown in the circuit diagram.
- When the vacuum cleaner is used to suck up fine dust the
pores of the dustbag may become clogged, causing the
passage of air through the dustbag to become obstructed.
As a result, the dustbag-full indicator will indicate that the
dustbag needs to be replaced, eventhough the dustbag is not
full at all.

ELECTRICAL DIAGRAM



Pos	Service code	Description
1	4322 005 24340	Dustcover / Pr / Light Blue
2	4322 003 23610	Dustcover lock / Light grey
3	4322 000 67810	DB detector spring
4	4322 003 23840	DB detector
5	4322 000 37300	Triple inletfilter
6	4322 003 33280	Inlet grille / Blue
7	4322 003 23930	Dustchamber / Blue
8	4322 003 23650	Cordwinder Knob / Select grey
9	4322 000 09750	Pedal spring
10	4322 005 19550	DBFI/Valve assy Jewel FL
11	4322 003 23660	Vario knob / Select grey
12	4322 005 24350	Display c. Transp. Light Blue / Pr
13	4322 003 27440	Button Panel / Light Blue
14	4322 003 23900	Adjuster
15	4322 006 22740	PCB assy mb turn 220-240 V
16	4322 003 23640	Switch knob / Select grey
17	4322 003 23920	Back panel / Blue
18	4322 003 23940	Cord outlet / Blue
19	4322 003 23910	Lowerhousing back / Blue
20	4322 003 27280	Lowerhousing / Light Blue
21	4322 005 17010	Caster assy / Select grey
22	4322 005 15150	Cyl. ass. fra. blk / Li. purple
23	4322 003 23620	Filter cover lock / Light grey
24	4322 003 27400	Filter cover fr. / Light Blue
25	4322 004 93340	HEPA13 washable exhaust filter

Pos	Service code	Description
26	4322 001 74110	Exhaust sealing / Blue
27	4322 000 38790	Silencer 4 wall backpanel
28	4322 003 25460	S-class H-sealing
29	4322 000 38670	Silencer 1 wall
30	4322 000 38770	Silencer 2 bottom
31	4322 003 23880	Motorhousing top inside
32	4322 001 73520	Buffer back green
33	4322 001 73400	Bufferring fr. Ans-Atlas
34	4322 009 09430	Motor 1761 Domel 220-240 V
35	4322 000 38820	Silencer 3
36	4322 003 23870	Motorhousing Bottom ans
37	4322 009 09440	Reel half spring unit (L = 9 m)
38	4322 009 09450	Reel half contact unit
39	4322 009 09460	Contact ring plate
40	4322 006 07410	U.K. / H.K. L = 9.3 m
41	4322 006 07390	Euro 4.8 mm pins L = 9.3 m
42	4322 003 18850	Curved bend B1
43	4322 005 17090	Curved bend / Hose assy
44	4322 004 23630	Telescopic tube Easytouch, stand
45	4341 003 02470	Accessory clip
46	4322 004 22560	Small Nozzle
47	4341 004 20850	Tri-active Nozzle, stand
48	4322 003 23830	DB-holder
49	4322 003 18870	Crevice Nozzle, stand
50	4322 003 26030	Motor Bracket
51	4322 003 17370	Coupling bush
52	4322 007 31650	Coupling spring
53	4322 007 16000	Leaf spring assy
54	4322 006 07400	Swiss L = 9.3 m
55	4322 001 73391	Dustcover sealing

