

## **FRU (Field Replaceable Unit) list**

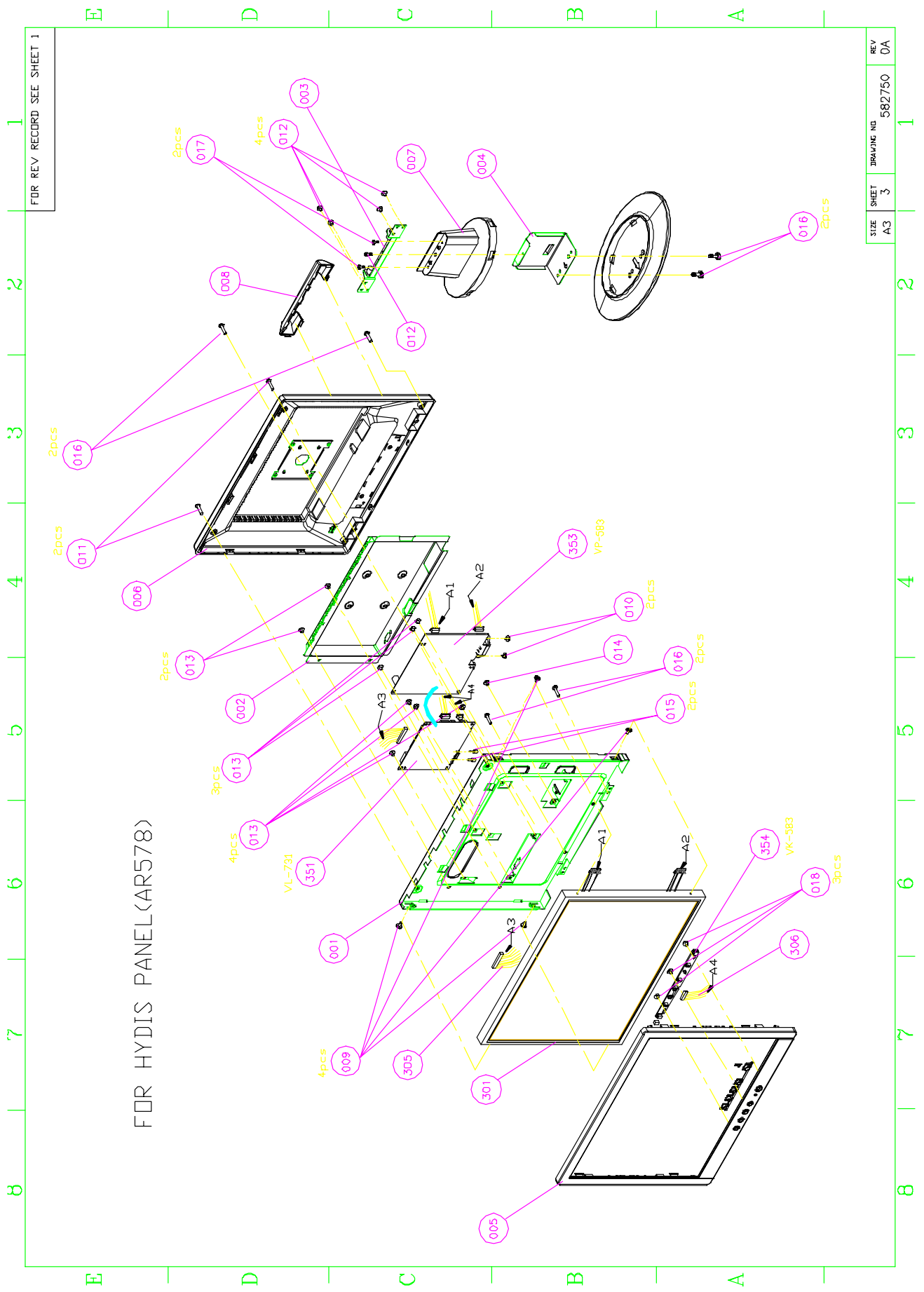
---

This chapter gives you the FRU (Field Replaceable Unit) listing in global configurations of AL1715. Refer to this chapter whenever ordering for parts to repair or for RMA (Return Merchandise Authorization).

NOTE : Please note WHEN ORDERING FRU PARTS, that you should check the most up-to-date information available on your regional web or channel(<http://aicsl.acer.com.tw/spl/>). For whatever reasons a part number change is made, it will not be noted in the printed Service Guide. For ACER-AUTHORIZED SERVICE PROVIDERS, your Acer office may have a DIFFERENT part number code to those given in the FRU list of this printed Service Guide. You MUST use the local FRU list provided by your regional Acer office to order FRU parts repair and service of customer machines.

NOTE: To scrap or to return the defective parts, you should follow the local government ordinance or regulations on how best to dispose it, or follow the rules set by your regional Acer office on how to return it.




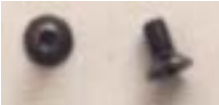







Model:AR578



REV	DA
582750	
SHAWING NO	
3	
SHEET	
A3	
SIZE	

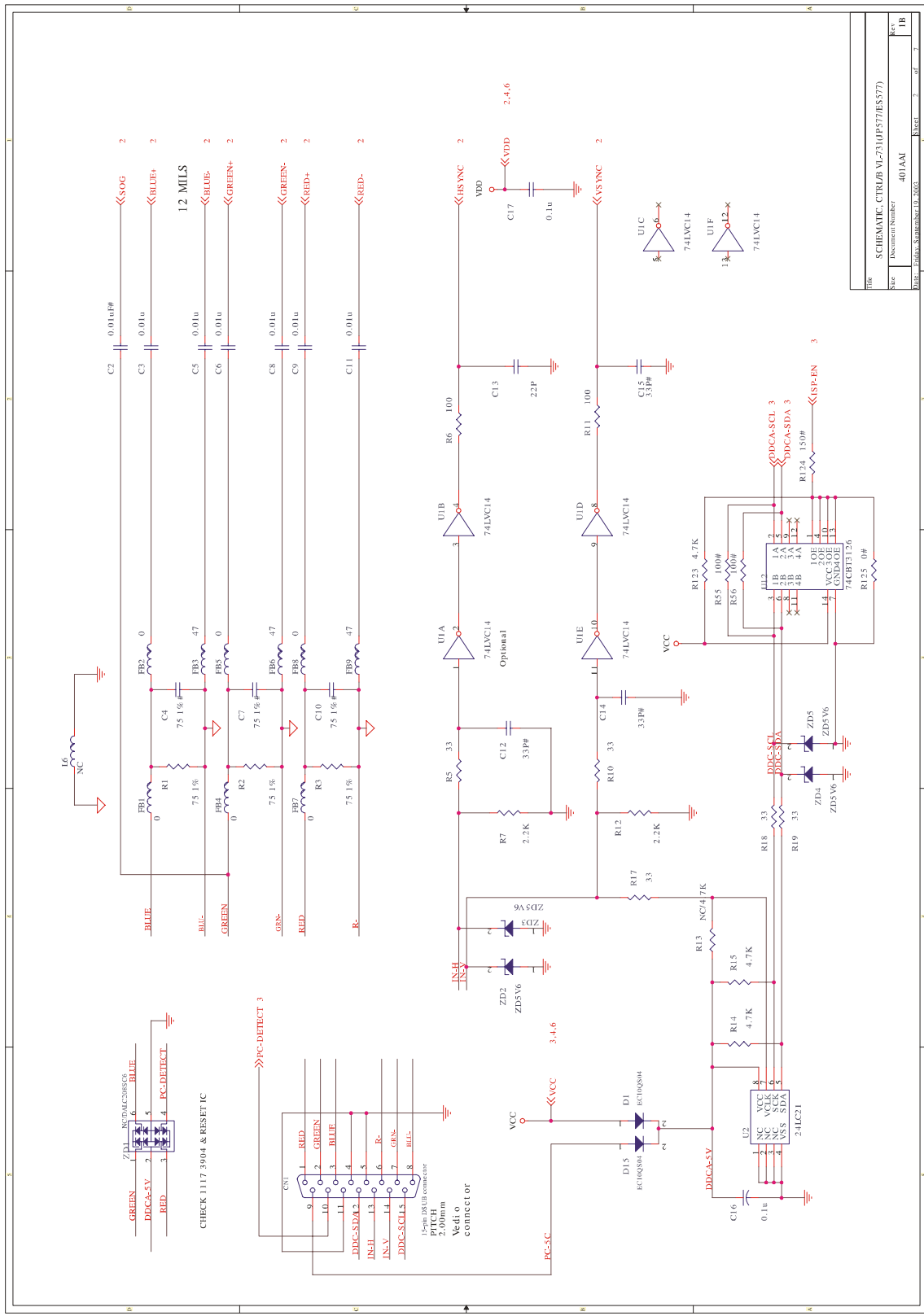
**C. For AR578 (Acer model:AL1715 )**

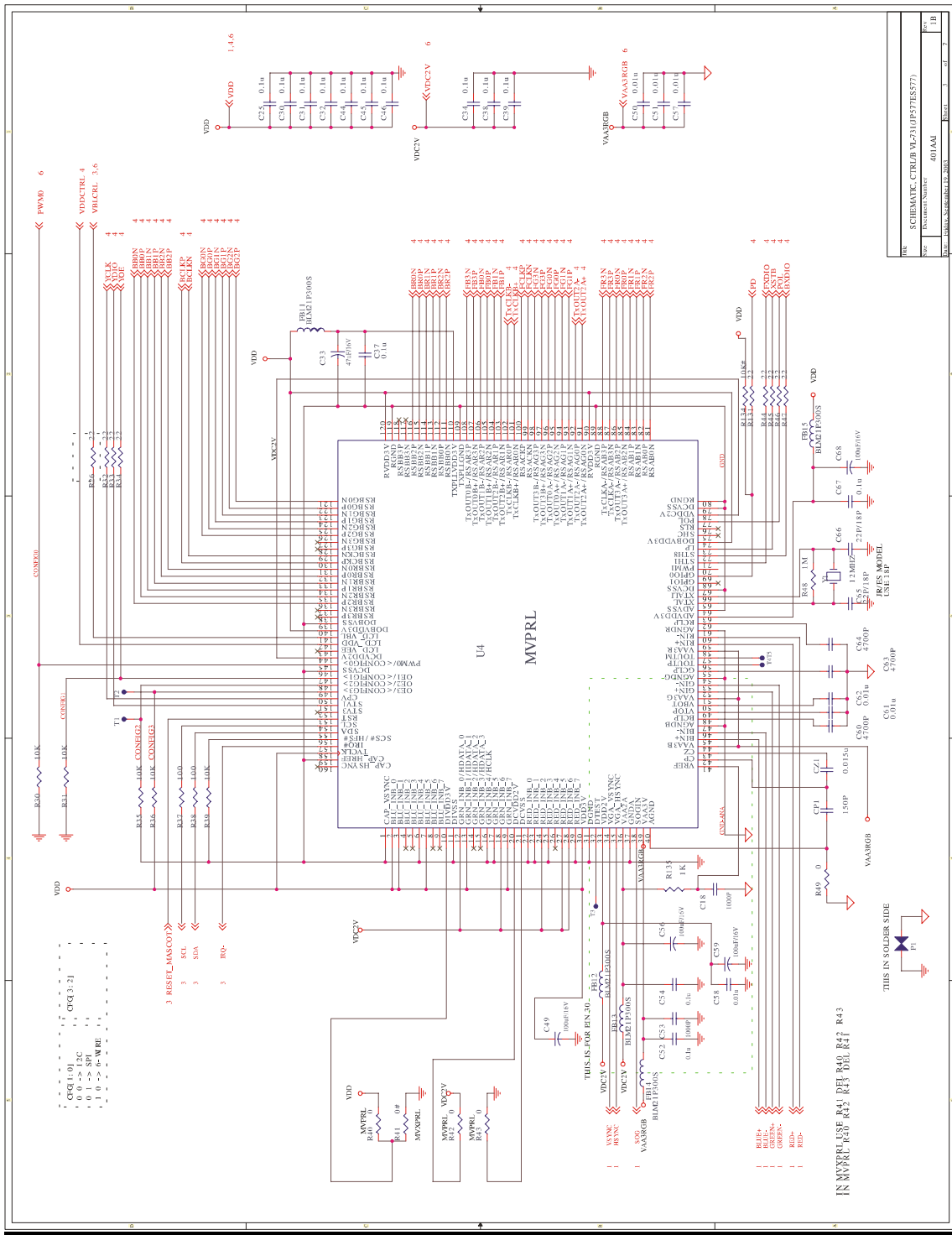
No.	Photo	Part Name	Description	Part No.
1		Back Cover Screws	M4X0.7+6P-NI	MAA20093004
2		BaseASSY(FOOT)	AR7714A(ABS94HB,MCG62)	FAAR7714A10
3		Stand Screws	M4X0.7+11P-MC WASHER DIM 8.0	MAA70002400
4		NECK COVER	AR7721(ABS94HB,MCG62)	FAAR7721100
6		NECK BRACKET	AR7722(SECC1.0)	ECAR7722000
7		HINGE ASSY	AR7717(SK-7,T=22)	ECAR7717000
8		NECK	AR7713(ABS94HB.MCG62)	FAAR7713100
9		Panel & Chassis	M3X0.5+4I-NI	MAA00001240
10		Function Board	VK-583 LAR578Y	454AAP30011
11		BACK COVER, Neck & Neck Bracket, Chassis & Bezel	TPP-4.0+10P-NI	MAB20074201

12		Back Cover	AR7812A(PC+ABS,MCG62)	FAAR7812A10
13		Hinge Screws	TPB-4+8C-MC	MAB7T002401
14		Mainboard & Chassis	4#40UNCX12.7 PLS-WASHER	MAAA0019400
15		POWER BOARD &CHASSIS	M3x0.5+6F-ZK	MAA10022007
16		Invertor Board	VP-583 LAR578Y	453AAP30011
17		Key/B & Bezel	TPP2X3+12B-MC	MAB80007400
18		POWER BOARD &CHASSIS	M4.0X0.7+8BTF-MC	MAA80014400
19		Function board to Mainboard cable	AR578 CTRL-KEY 13P	DC020162500
20		Main Shield	AR7816(TIN0.3)	ECAR7816000
21		Mainboard and Invertor Board Screws	M3X0.5+4C-NI	MAA70003100
22		Mainboard	VL-731 LAR578Y ABC	461AAI300E2

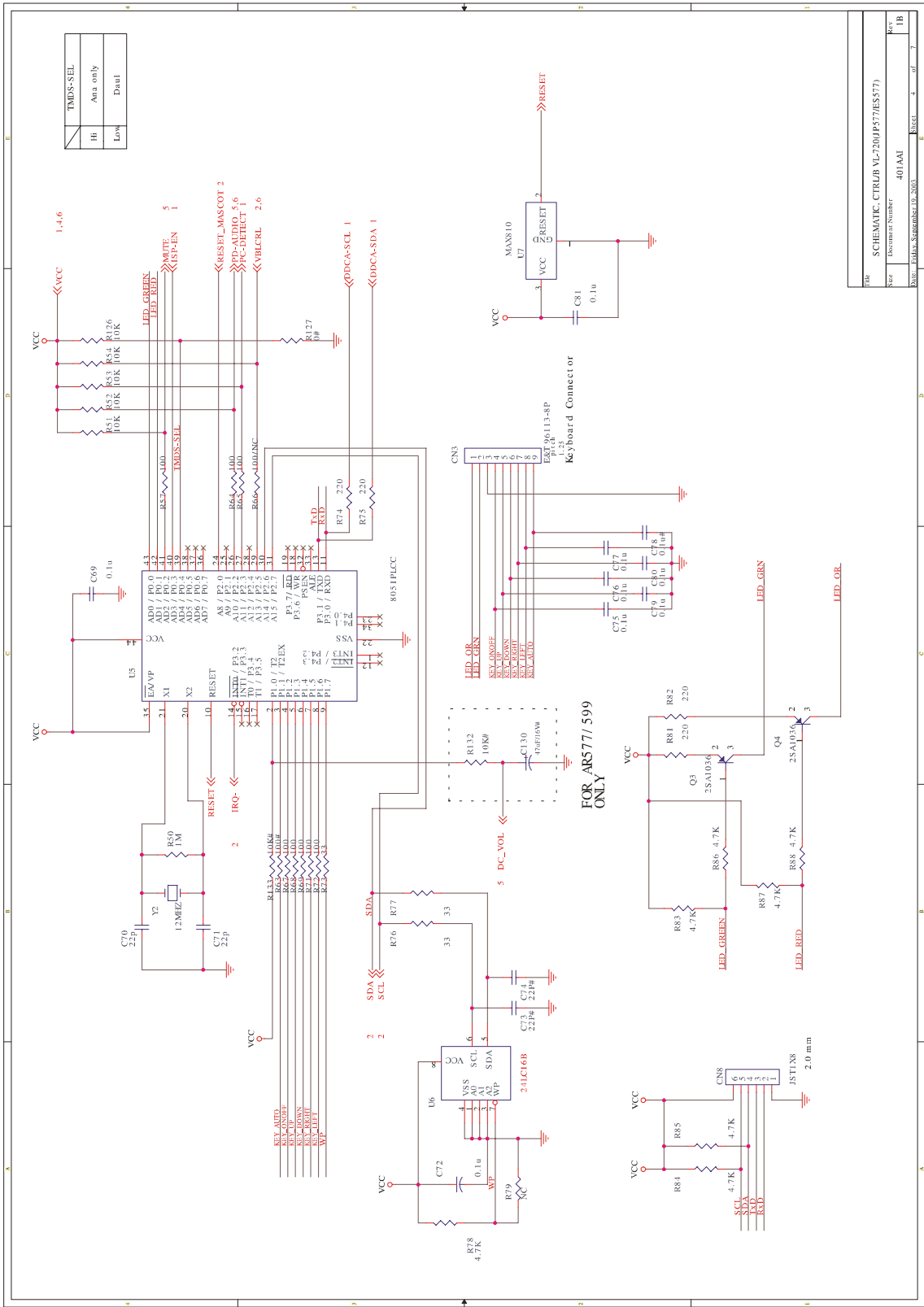
23		Frame(BEZEL)	AR7811A (PC+ABS,MCG62)	FAAR7811A10
24		Main Frame/CHASSIS	AR7715(SECC1.0)	ECAR7715000
25		Mainboard to LCD Cable	JP577 PANEL-CTRL 30P	DC020160700
26		LCD Panel(F)	HT17E12-200 17"(HYDIS)	AC6V0000200
27		LCD Panel(B)	HT17E12-200 17"(HYDIS)	AC6V0000200

## Schematic Diagram





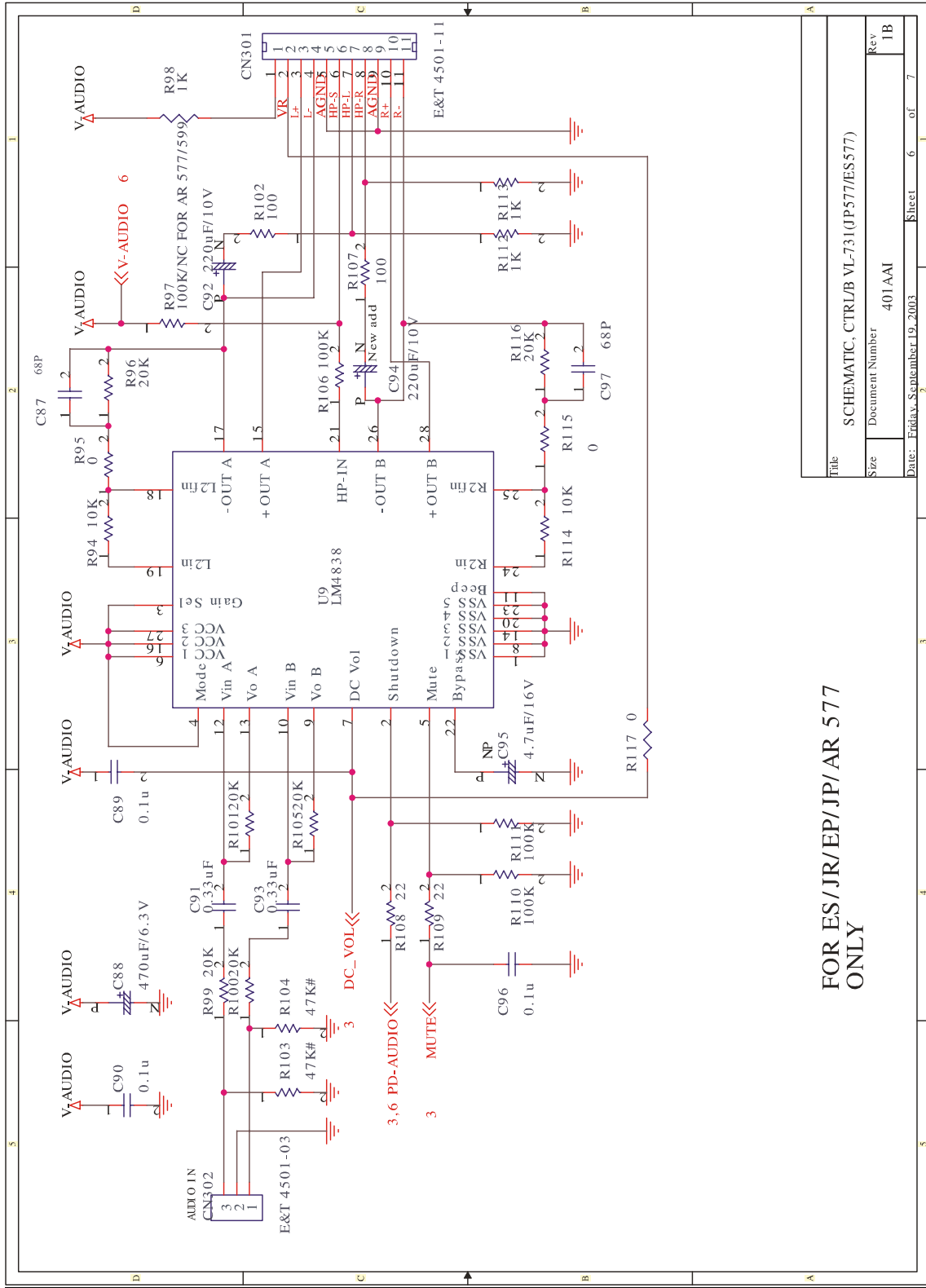
Rev	SCHMATIC: CTRLR.V1.23.10(P87RES77)
Doc	Document Number: 401441
Ver	Rev. 1.0
File	CTRLR_V1.23.10.P87RES77



File	SCHEMATIC_CTR1UB_VL7300(P577/RES577)		
Size	Document Number	401AA1	Rev
Issue	Issue	1	of 7
Doc. No.	Issue	1	of 7





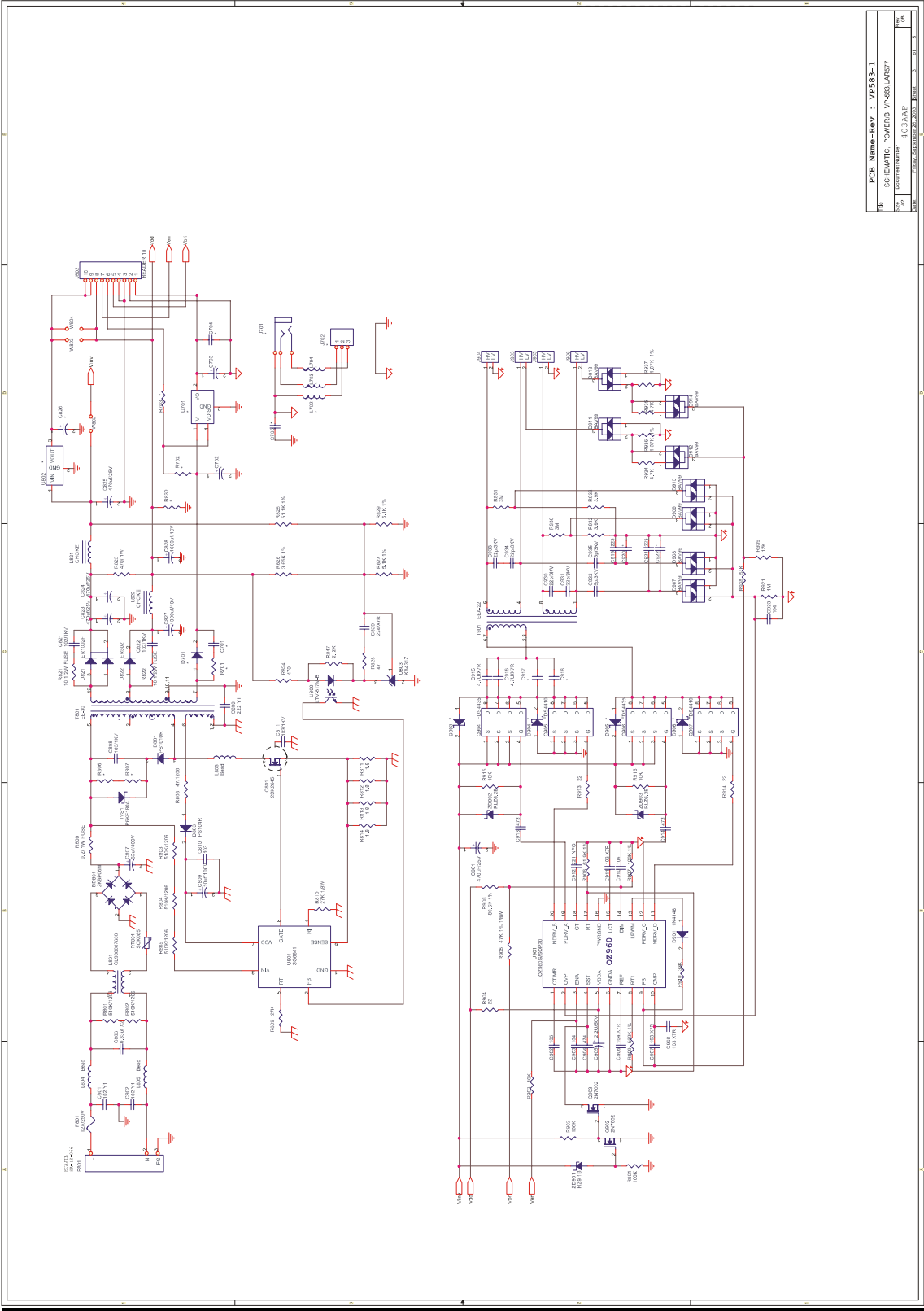


FOR ES/JR/EP/JP/AR 577  
ONLY

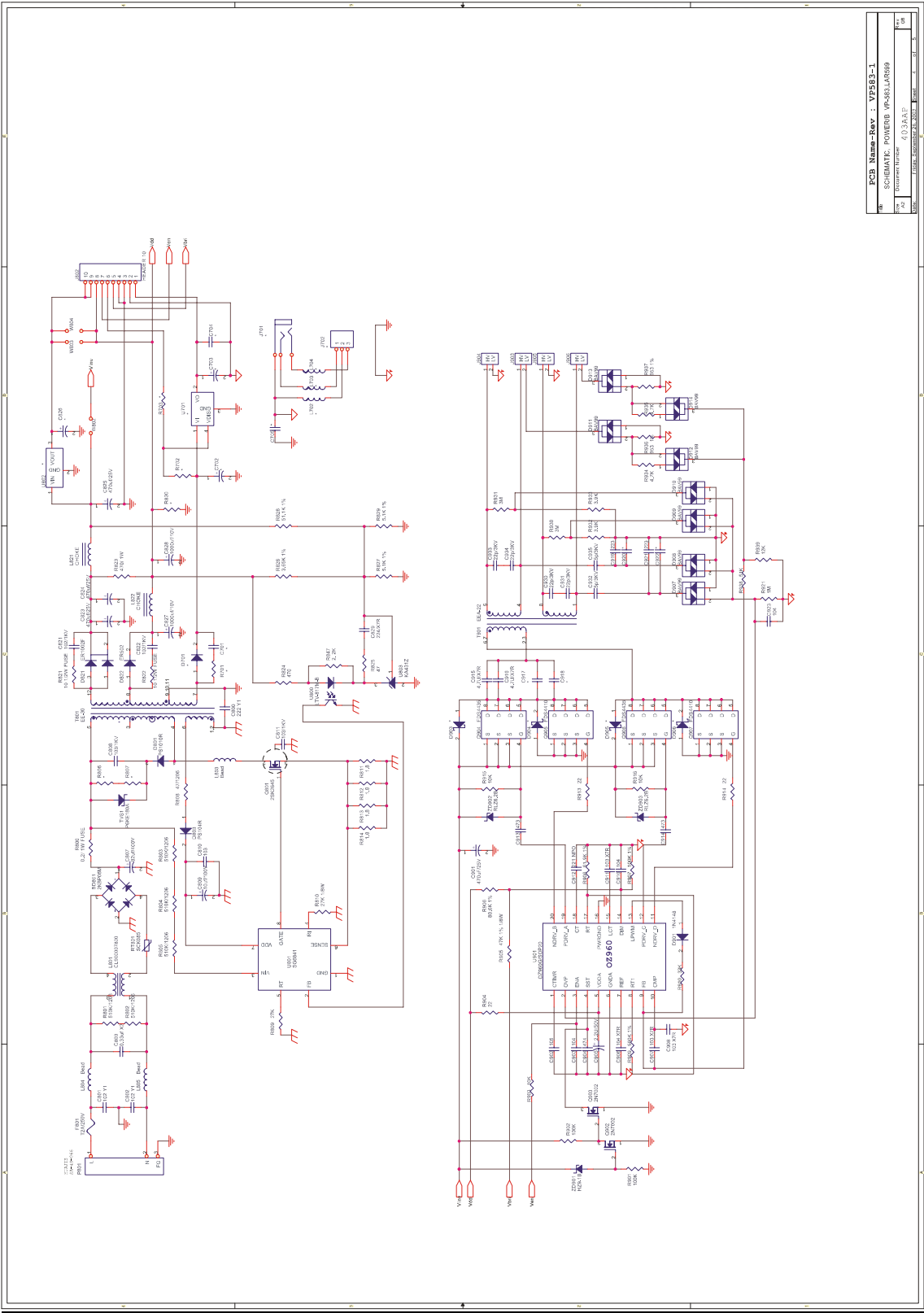
Title		SCHEMATIC, CTRL/B VL-731 (JP577/ES577)	
Size	Document Number	401 AAI	
Date:	Friday, September 19, 2003	Sheet	6 of 7
Rev	1B		



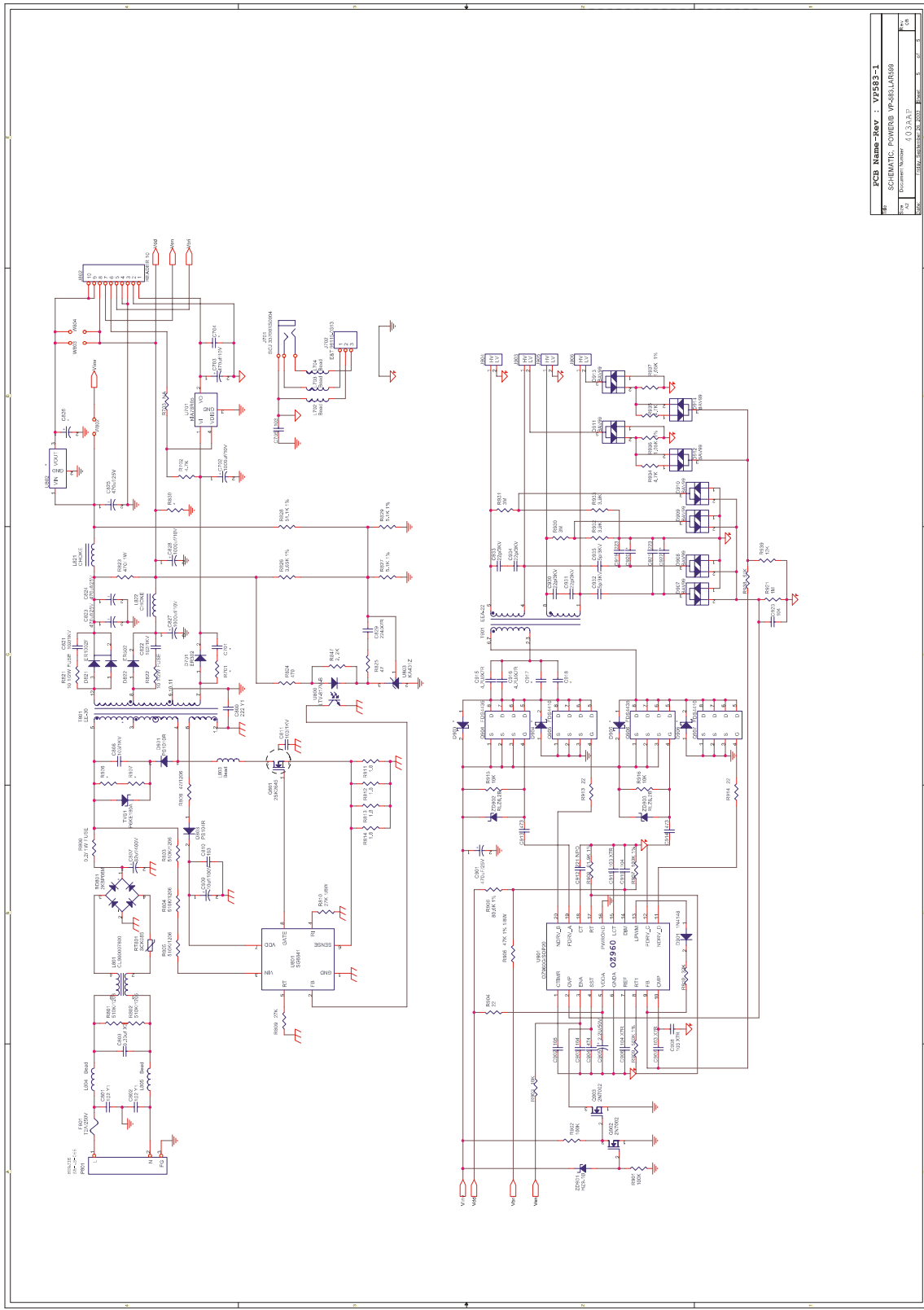




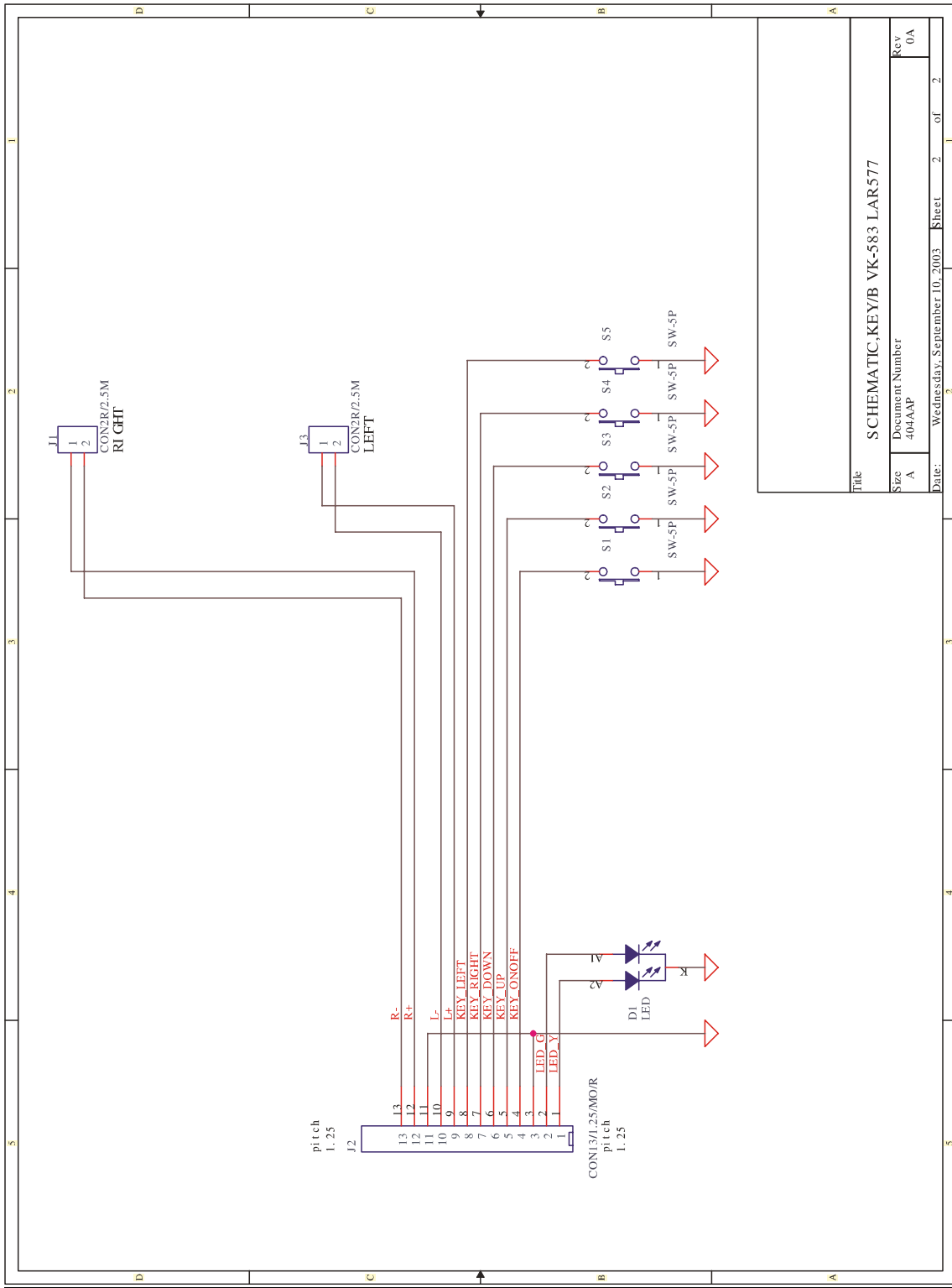
PCB Name-Rev :	VZ563-1
№	SCHEMATIC POWERB W-481-LAR07
№	Document Number : 132415
DATE	13.06.2013
DESIGNER	Y. S. S. S.
DATE	13.06.2013



PCB Name-Rev :	V7593-1
Schematic Name :	POWERB_WPS&LLAR600
Sheet Number :	1/3
Sheet Count :	3



PCB Name-Rev : VF583-1	
Schematic Number : VP-68LAR899	
Doc No :	03-815
Doc Date :	2008.05.20
Doc Rev :	5



Title		SCHEMATIC KEY/B VK-583 LAR577	
Size	A	Document Number	404AAP
Date:	Wednesday, September 10, 2003	Sheet	2 of 2
Rev	0A		